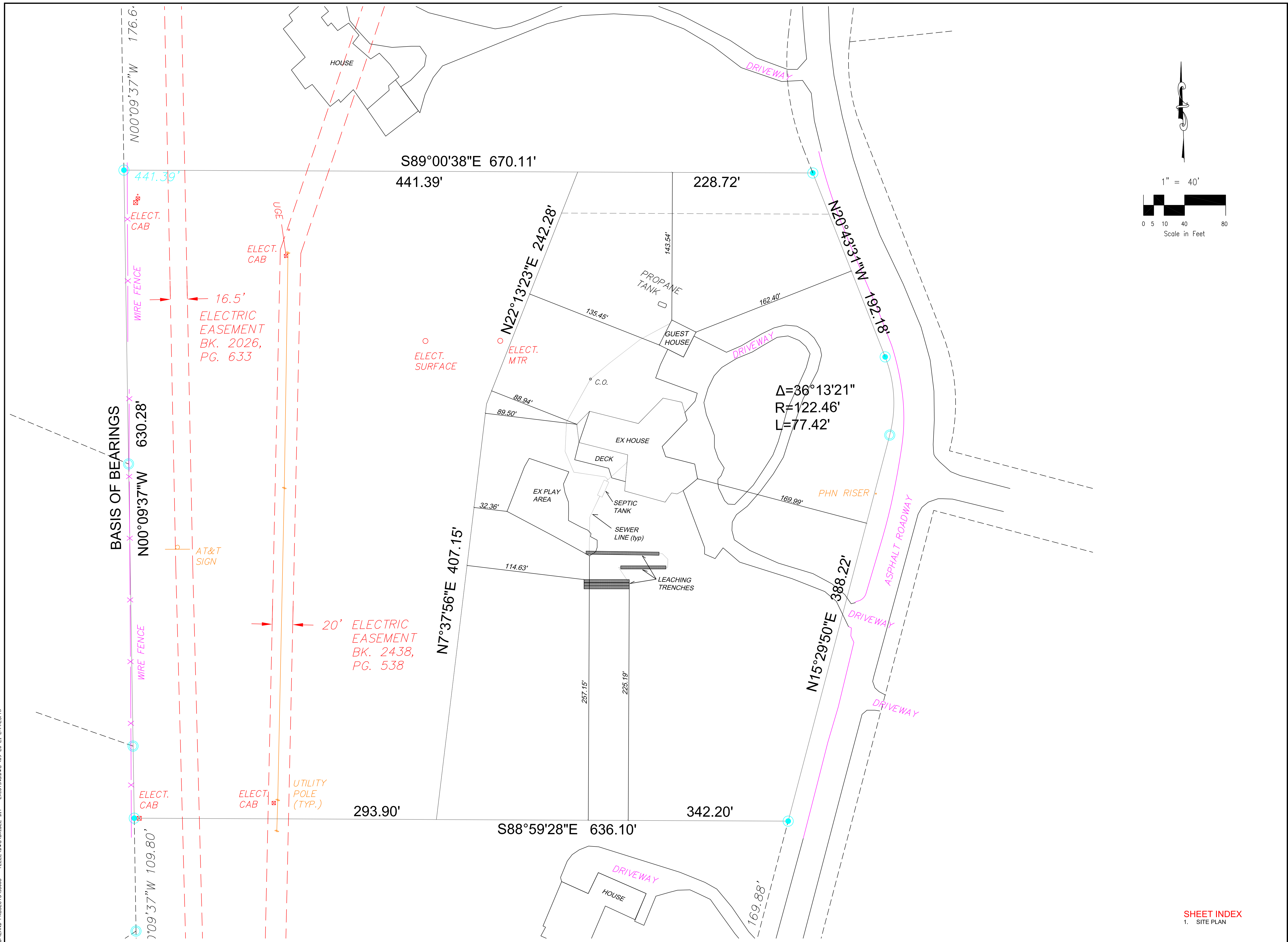
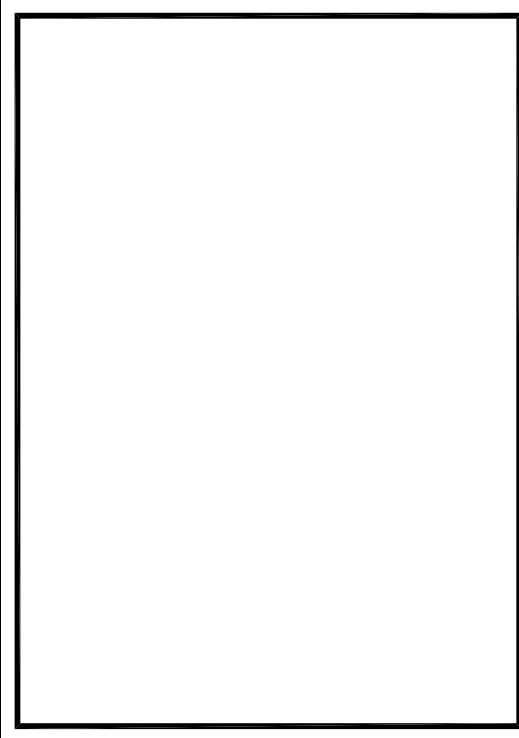


D:\LAND PROJECTS\18006 - TELLENDING\BRIDLE BIT - EXISTING.DWG (09-20-21 2:44:28PM)



WHITEHEAD ENGINEERING, LLC
 CONSULTING CIVIL ENGINEERS

P.O. Box 1551
 COLORADO SPRINGS, CO 80901
 PHONE (719) 237-4411



COPYRIGHT
 WHITEHEAD ENGINEERING, LLC

DESIGN AND DRAWINGS
 NOT TO BE REUSED
 WITHOUT WRITTEN
 PERMISSION OF ENGINEER

SHEET TITLE:
SITE PLAN

PROJECT NAME:
**BRIDLE BIT SUBDIVISION 1A
 EL PASO COUNTY, COLORADO**

BENCHMARK:

REVISIONS:

SCALE: 1" = 40'

DATE: 05-25-2021

DRAWN BY: DW

CHECKED BY: DW

SHEET NO:
 1 OF 1

DRAWING NAME:
 Bridle Bit - Existing

VIEW:
 Site Plan

PROJECT NO:
 18006

SHEET INDEX
 1. SITE PLAN