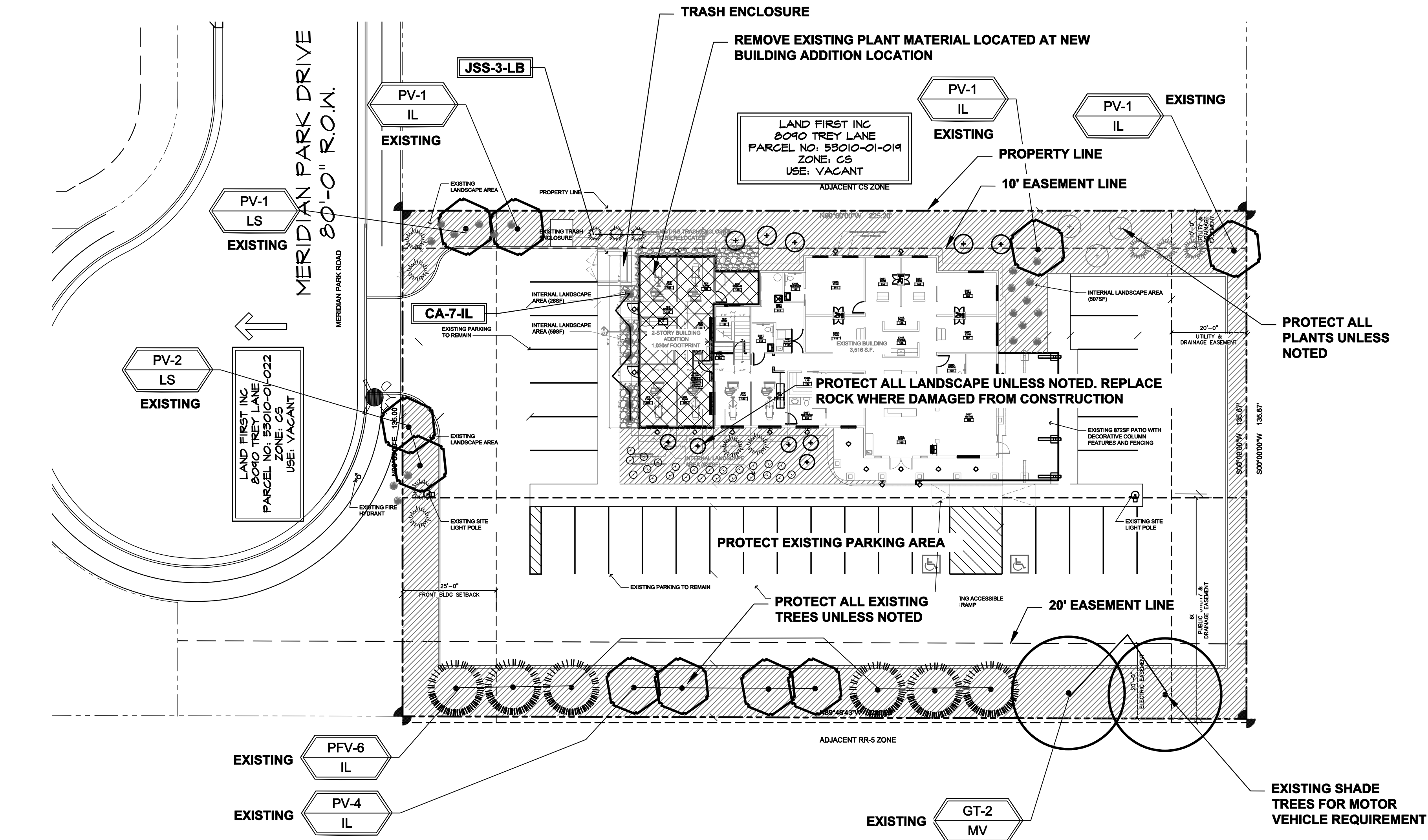
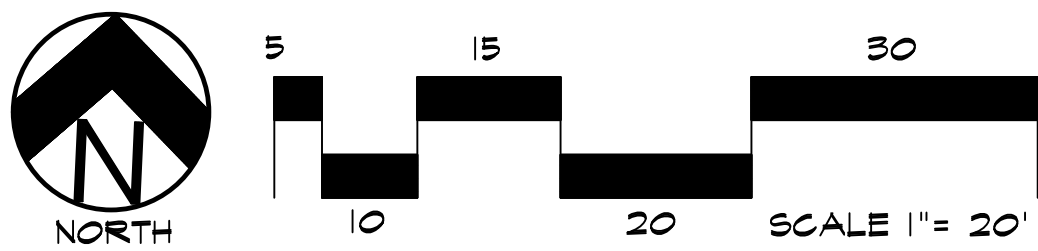


ALTERNATE LANDSCAPE PLAN



CODE REQUIREMENT CHART

LANDSCAPE SETBACKS (LS)					
STREET NAME OR ZONE BOUNDARY (ELEV.)	STREET CLASSIFICATION	WIDTH (FT.) REQ./PROV.	LINEAR FOOTAGE	TREE/FEET REQUIRED	NO. OF TREES REQ./PROVIDED
MERIDIAN PARK DRIVE	NON-ARTERIAL	10/10 FT	18 LF	1/30 FT	3/3

MOTOR VEHICLE LOTS (MV)			
NO. OF VEHICLE SPACES PROVIDED	SHADE TREES (1/15 SPACES) REQ./PROV.	VEHICLE LOT FRONTAGE(S)	2/3 LENGTH OF FRONTAGE (FT.)
30	2/2	NA	NA
MIN. 3' SCREENING PLANTS REQ./PROV.	EVERGREEN PLANTS REQ. 50%/PROV. NA		

INTERNAL LANDSCAPING (IL)			
INTERNAL LANDSCAPE AREA INCLUDES ALL LANDSCAPE AREAS NOT INCLUDING SETBACKS, BUFFERS OR MOTOR VEHICLE ISLANDS.			
NET SITE AREA (SF) (LESS PUBLIC ROW)	PERCENT MINIMUM INTERNAL AREA (5%)	INTERNAL AREA (SF) REQ./PROV.	INTERNAL TREES (1/500 SF) (EXCLUDING DRIVEWAYS)
30,471 SF	NON-RESIDENTIAL	1,524 SF / 16,200 SF	3/13
SHRUB SUBSTITUTES REQ./PROV.	INTERNAL PLANT ABBR. DENOTED ON PLAN	PERCENT GROUND PLANE VEG. REQ./PROV.	
0/0	IL	50/50%	

LANDSCAPE BUFFERS AND SCREENS (LS)				
STREET NAME OR PROPERTY LINE (ELEV.)	LINEAR FOOTAGE/ 150 LF NORTH	SETBACK BUFFER REQ. / PROV.-FENCE	BUFFER TREES (1/20') REQ./PROV. - NA	EVERGREEN TREES (1/3) REQ./PROV. - NA
TRASH ENCLOSURE	NA	NA	NA	3 UPRIGHT JUNIPER

PLANT SCHEDULE

Symbol	Abbr.	Quantity	Botanical Name	Common Name	Mature Width/Hght	Size
EVERGREEN SHRUBS:						
	JSS	3	Juniperus x chinensis 'Spartan'	Spartan Juniper	3-4' x 12-15'	Cont. 5 gal.
ORNAMENTAL GRASSES:						
	CA	7	Calamagrostis acutiflora 'Karl Foerster'	Feather Reed Grass	1-3' / 2-3'	#1 CONT.

PLANT MATERIAL NOTE

ALL EXISTING PLANT MATERIAL SHALL BE PROTECTED UNLESS RELOCATION IS SPECIFIED ON PLAN. ANY PLANTS THAT ARE DEAD OR IN POOR HEALTH SHALL BE REPLACED. ALL RELOCATED PLANTS SHALL BE WARRANTED FOR ONE GROWING SEASON AFTER TIME OF PLANTING.

TRANSPLANTING TREES SHALL BE PERFORMED BY LICENSED TREE MOVER. TRANSPLANTED TREES SHALL RECEIVE REGULAR WATER AFTER PLANTING BASED ON TIME OF YEAR AND SIZE OF TREE. COORDINATE WITH OWNER FOR TREE WATERING.

NOTE: IRRIGATION SYSTEM TO BE DESIGN/BUILD FOR ALL TURF AND SEEDED AREAS AND DRIP FOR ALL PLANTING AREAS. COORDINATE WITH GENERAL CONTRACTOR. REFER TO IRRIGATION GUIDELINES.

GROUND COVER LEGEND

SYMBOL	DESCRIPTION	APPROX. SF
	Arkansas Tan Rock Cobble: 2-4" Diameter (with weed barrier)	260 SF
	Rock to match existing	

NOTE: ALL QUANTITIES SHALL BE PER PLAN. LEGEND SF ARE FOR REFERENCE ONLY.

UTILITIES NOTE

VERIFY LOCATION AND DEPTH OF ALL UNDERGROUND UTILITIES PRIOR TO START OF WORK. CALL 811 FOR UTILITY LOCATES. ANY CONFLICT BETWEEN TREE LOCATIONS AND UTILITIES SHOWN ON PLANS SHALL BE RESOLVED WITH GENERAL CONTRACTOR PRIOR TO PLANTING. ALL ELECTRICAL VAULTS AND TRANSFORMERS SHALL BE KEPT CLEAR FROM PLANT MATERIAL PER LOCAL CODE AND ALL SHRUBS TO BE LOCATED MINIMUM 3' CLEAR OF ALL FIRE HYDRANTS AT MATURE SIZE. REFER TO LOCAL CODES.

DOCUMENT NOTE

IRRESPECTIVE OF ANY OTHER TERM IN THIS DOCUMENT, LANDSCAPE ARCHITECT SHALL NOT CONTROL OR BE RESPONSIBLE FOR CONSTRUCTION MEANS, METHODS, TECHNIQUES, SCHEDULES, SEQUENCES OR PROCEDURES, OR FOR CONSTRUCTION SAFETY OR ANY OTHER RELATED PROGRAMS, OR FOR ANY OTHER PARTIES' ERRORS OR OMISSIONS OR FOR ANY OTHER PARTIES' FAILURE TO COMPLETE THEIR WORK OR SERVICES IN ACCORDANCE WITH LANDSCAPE ARCHITECT'S DOCUMENTS.

HIGHER GROUND DESIGNS, INC.
LANDSCAPE ARCHITECTURE, PLANNING & IRRIGATION DESIGN

5350 NORTH ACADEMY BLVD. STE. 207
COLORADO SPRINGS, CO 80918
Phone 719-477-1646
Fax 719-588-1122



FALCON DENTAL
DENTAL OFFICE
8011 MERIDIAN PARK DRIVE
FALCON, CO

THESE DRAWINGS ARE THE PROPERTY OF HIGHER GROUND DESIGNS, INC. AND SHALL NOT BE USED FOR ANY OTHER PROJECT WITHOUT THE WRITTEN AUTHORIZATION BY HIGHER GROUND DESIGNS, INC. THESE DRAWINGS ARE NOT FOR CONSTRUCTION.

PREPARED FOR:

NOT FOR CONSTRUCTION

JOB NUMBER		1046-21
REVISIONS		
1-7-22	PER	COMMENTS
ORIGINAL DATE		11-10-21
DRAWN BY		JM
DESCRIPTION		LANDSCAPE PLAN
SHEET NO.		L1.1
		SHEET 7 OF 7

