





















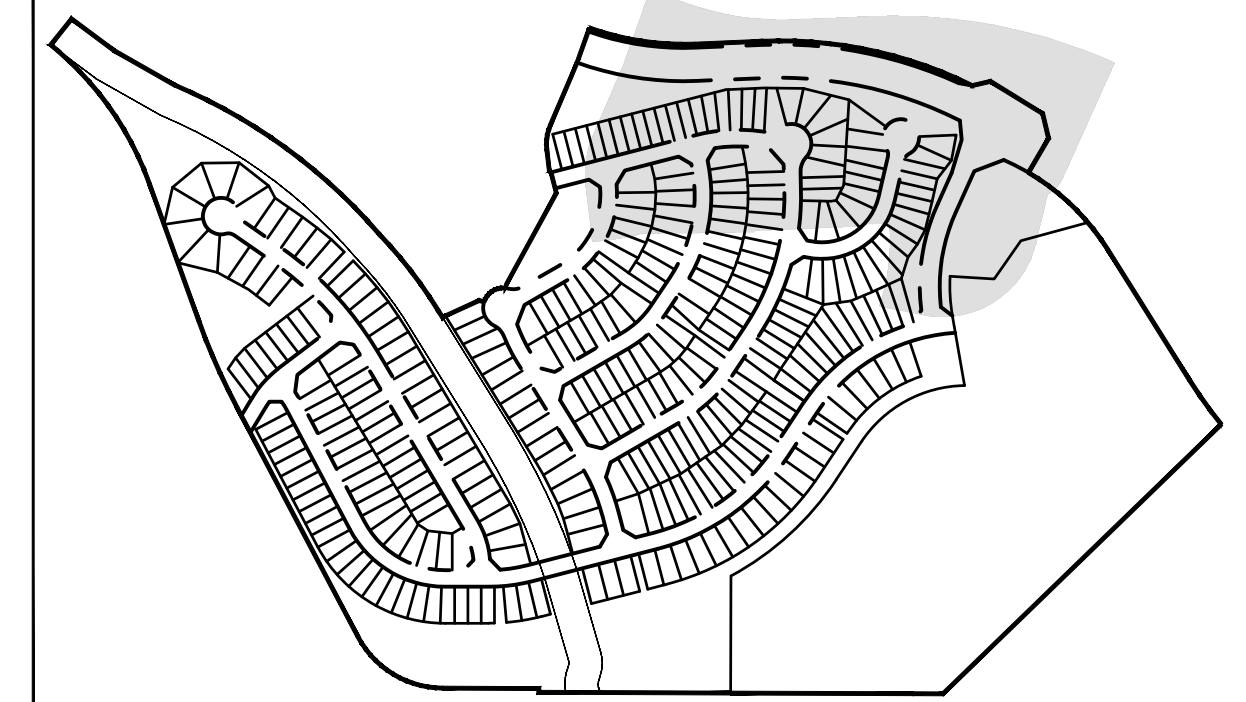




HUHN, KEN, 3/25/2024 8:13 AM

# GRANDVIEW RESERVE PHASE 3 PUD DEVELOPMENT PLAN & PRELIMINARY PLAN

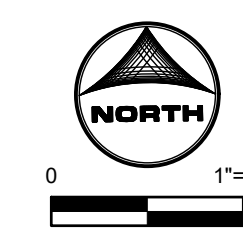
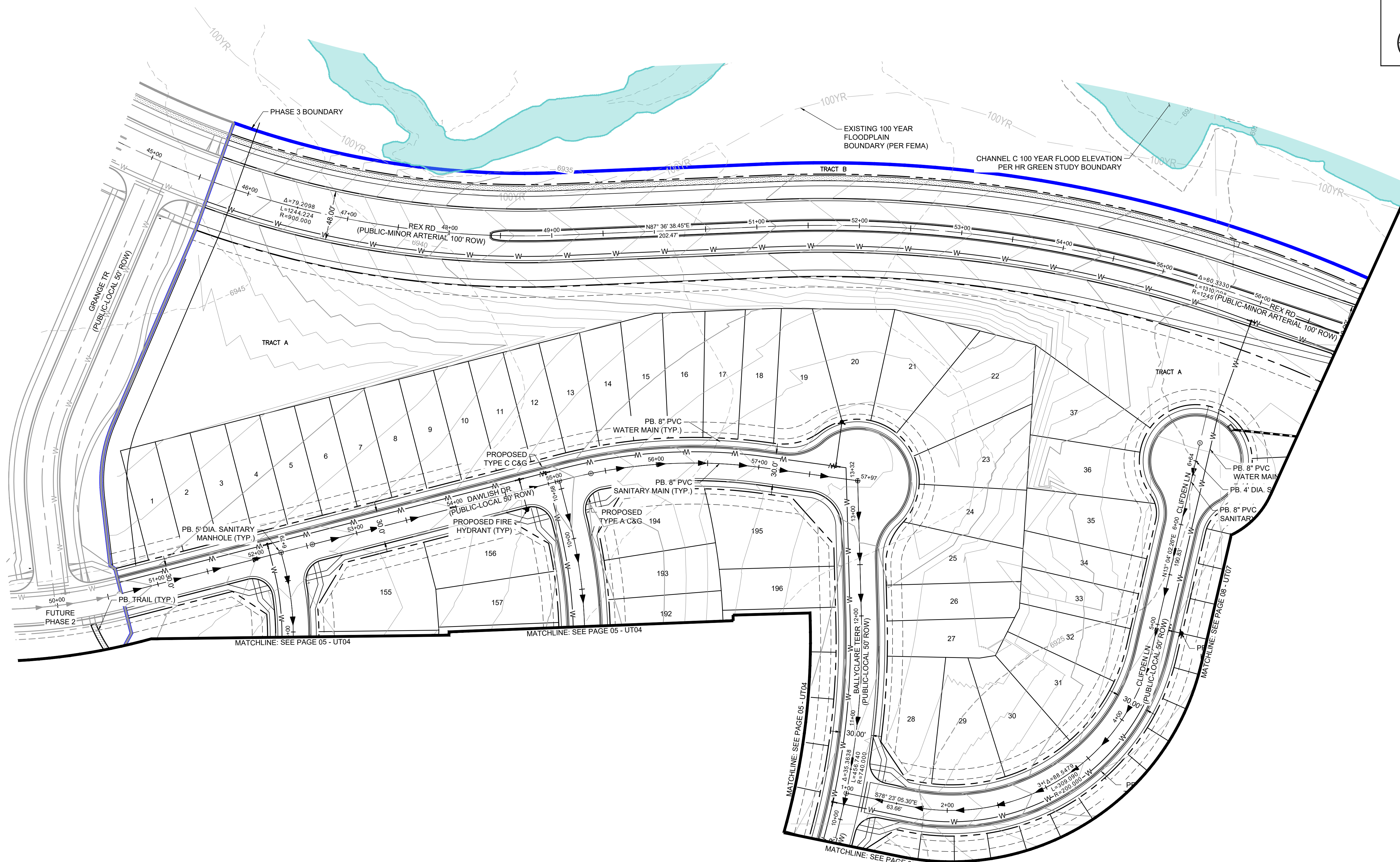
A TRACT OF LAND BEING A PORTION SECTIONS 21, 22, 27, & 28, TOWNSHIP 12 SOUTH, RANGE 64 WEST OF THE  
6TH/ PRINCIPAL MERIDIAN, EL PASO COUNTY, COLORADO



KEY MAP  
SCALE:  
1/500

## LINWORK LEGEND

	EXISTING/FUTURE	PROPOSED
PROPERTY LINE	---	---
RIGHT OF WAY	---	---
CURB & GUTTER	---	---
OVERHEAD ELECTRIC	ELEC	OE
FIBER OPTIC	FOP	FO
GAS MAIN	GAS	GAS
SANITARY SEWER	---	---
STORM DRAIN	---	---
WATER MAIN	---	---
SWALE	---	---
STORM SEWER	EXISTING	PROPOSED
MANHOLE	⊙	⊙
STORM INLET	⊙	⊙
FLARED END SECTION	⊙	⊙
RIPRAP	⊙	⊙
SANITARY SEWER		
CLEAN OUT	⊙	⊙
MANHOLE	⊙	⊙
PLUG	⊙	⊙
WATER		
FIRE HYDRANT	⊙	⊙
FIRE DEPT. CONNECTION	⊙	⊙
GATE VALVE	⊙	⊙
MANHOLE	⊙	⊙
METER	⊙	⊙
TEE	⊙	⊙
REDUCER	⊙	⊙



NOT FOR CONSTRUCTION  
LAND USE REVIEW FILE NO: PUDSP-

DRAWN BY: CVW JOB DATE: ---  
 APPROVED: KH JOB NUMBER: 201662  
 CAD DATE: 3/25/2024  
 CAD FILE: J:\2020\201662\CAD\DWG\CIPUD\_Phase\_3\_662.203\Utility\Utility\_Plan\_PUD\_Phase3

BAR IS ONE INCH ON  
OFFICIAL DRAWINGS.  
0" = 1"

IF NOT ONE INCH,  
ADJUST SCALE ACCORDINGLY.

NO.	DATE	BY	REVISION DESCRIPTION

**HRGreen**  
 HR GREEN - COLORADO SPRINGS  
 1975 RESEARCH PKWY SUITE 230  
 COLORADO SPRINGS CO 80920  
 PHONE: 719.300.4140  
 FAX: 713.965.0044

GRANDVIEW RESERVE - PHASE 3  
 D.R. HORTON  
 EL PASO COUNTY, CO

**D-R HORTON**  
*America's Builder*

PRELIMINARY UTILITY PLANS  
 PRELIMINARY UTILITY PLAN 6 OF 7

SHEET  
**UT06**

**07**

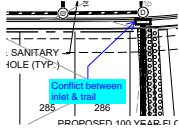






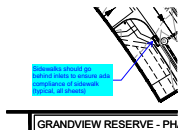
# V1\_ Preliminary Utility Plan (1).pdf Markup Summary

## Callout (3)



**Subject:** Callout  
**Page Label:** [2] Utility\_Plan\_PUD\_Phase3-UT02  
**Author:** CDurham  
**Date:** 6/4/2024 6:12:23 PM  
**Status:**  
**Color:** ■  
**Layer:**  
**Space:**

Conflict between inlet & trail



**Subject:** Callout  
**Page Label:** [1] Utility\_Plan\_PUD\_Phase3-UT01  
**Author:** CDurham  
**Date:** 6/4/2024 6:13:28 PM  
**Status:**  
**Color:** ■  
**Layer:**  
**Space:**

Sidewalks should go behind inlets to ensure ada compliance of sidewalk (typical, all sheets)



**Subject:** Callout  
**Page Label:** [4] Utility\_Plan\_PUD\_Phase3-UT04  
**Author:** CDurham  
**Date:** 6/4/2024 6:15:06 PM  
**Status:**  
**Color:** ■  
**Layer:**  
**Space:**

Conflict between ped ramp and inlet

## Text Box (2)

Ensure all existing and proposed easements are shown and labeled

**Subject:** Text Box  
**Page Label:** [1] Utility\_Plan\_PUD\_Phase3-UT01  
**Author:** CDurham  
**Date:** 6/4/2024 6:16:48 PM  
**Status:**  
**Color:** ■  
**Layer:**  
**Space:**

Ensure all existing and proposed easements are shown and labeled

Show utility stubs or provide detail showing general location within lot.

**Subject:** Text Box  
**Page Label:** [1] Utility\_Plan\_PUD\_Phase3-UT01  
**Author:** CDurham  
**Date:** 6/4/2024 6:17:50 PM  
**Status:**  
**Color:** ■  
**Layer:**  
**Space:**

Show utility stubs or provide detail showing general location within lot.