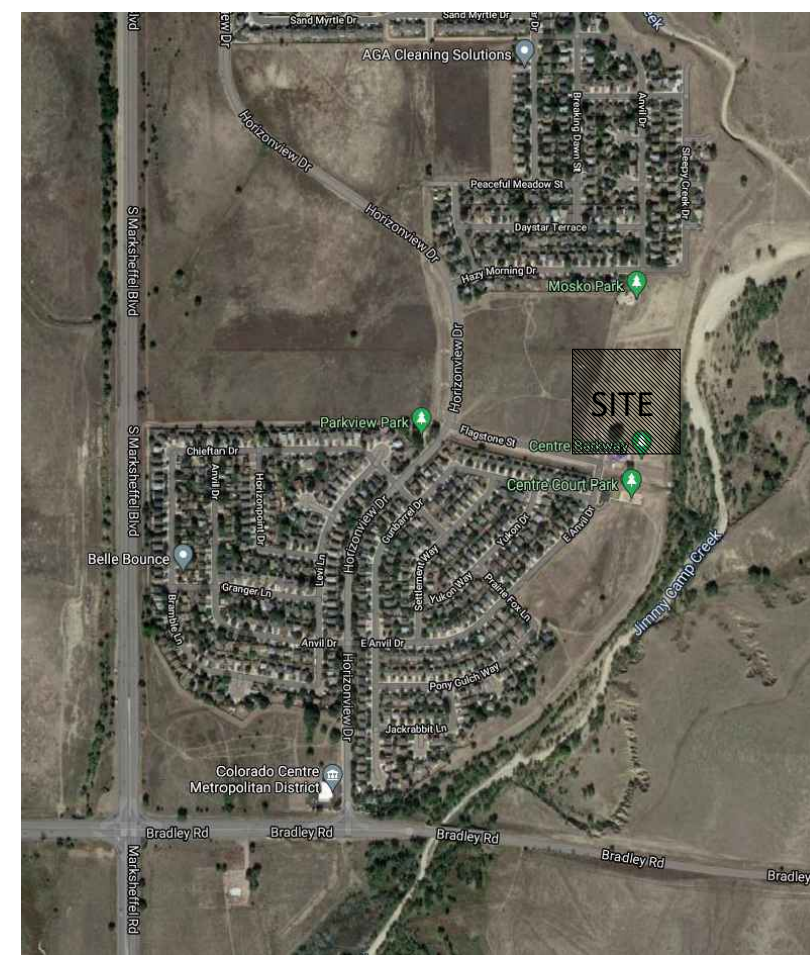


**LOCATION MAP**



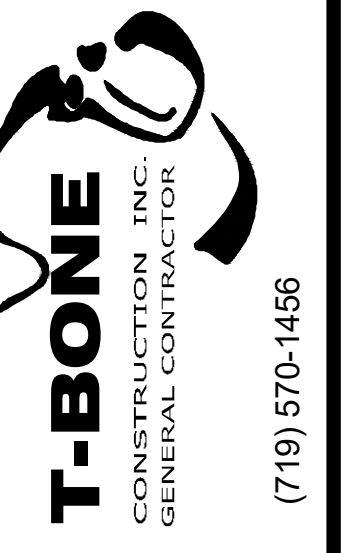
OWNER  
 COLORADO CENTRE METROPOLITAN DISTRICT  
 AL TESTA  
 4770 HORIZONVIEW DR.  
 COLORADO SPRINGS, CO 80925  
 (719) 380-8857  
 AL.TESTA@PROCONINC.NET

APPLICANT  
 T-BONE CONSTRUCTION, INC.  
 DARIN WEISS, AIA  
 1310 FORD ST.  
 COLORADO SPRINGS, CO 80915  
 (719) 623-3314  
 DARIN.WEISS@TBONECONSTRUCTION.COM

PLAN PREPARER  
 MCSHEA CONSULTING, LLC.  
 COREE FORRESTER  
 4445 NORTHPARK DR. STE. 200  
 COLORADO SPRINGS, CO 80907  
 (719) 358-8208  
 COREE@MCSHEACONSULTING.COM

PROPERTY ADDRESS  
 9696 FLAGSTONE ST.  
 COLORADO SPRINGS, CO 80925

**cShea consulting, LLC**  
 MECHANICAL + ELECTRICAL + PLUMBING  
 4445 Northpark Dr. Suite 200  
 Colorado Springs, CO 80907  
 mcsheaconsulting.com  
 Project #: 21-1847



Design Development  
 Consultants @  
 1310 FORD STREET  
 COLORADO SPRINGS, CO 80915  
 (719) 570-1456  
 (C) ALL RIGHTS RESERVED

Revisions	DESCRIPTION	DATE
#		

**CO. CTR. METRO. DISTRICT  
 ADMINISTRATION BUILDING**  
 9696 FLAGSTONE STREET  
 COLORADO SPRINGS, CO 80916  
 CDD'S  
 D2-0321

DATE 05-27-2021  
 CHECKED MRM  
 DRAWN BY CCF

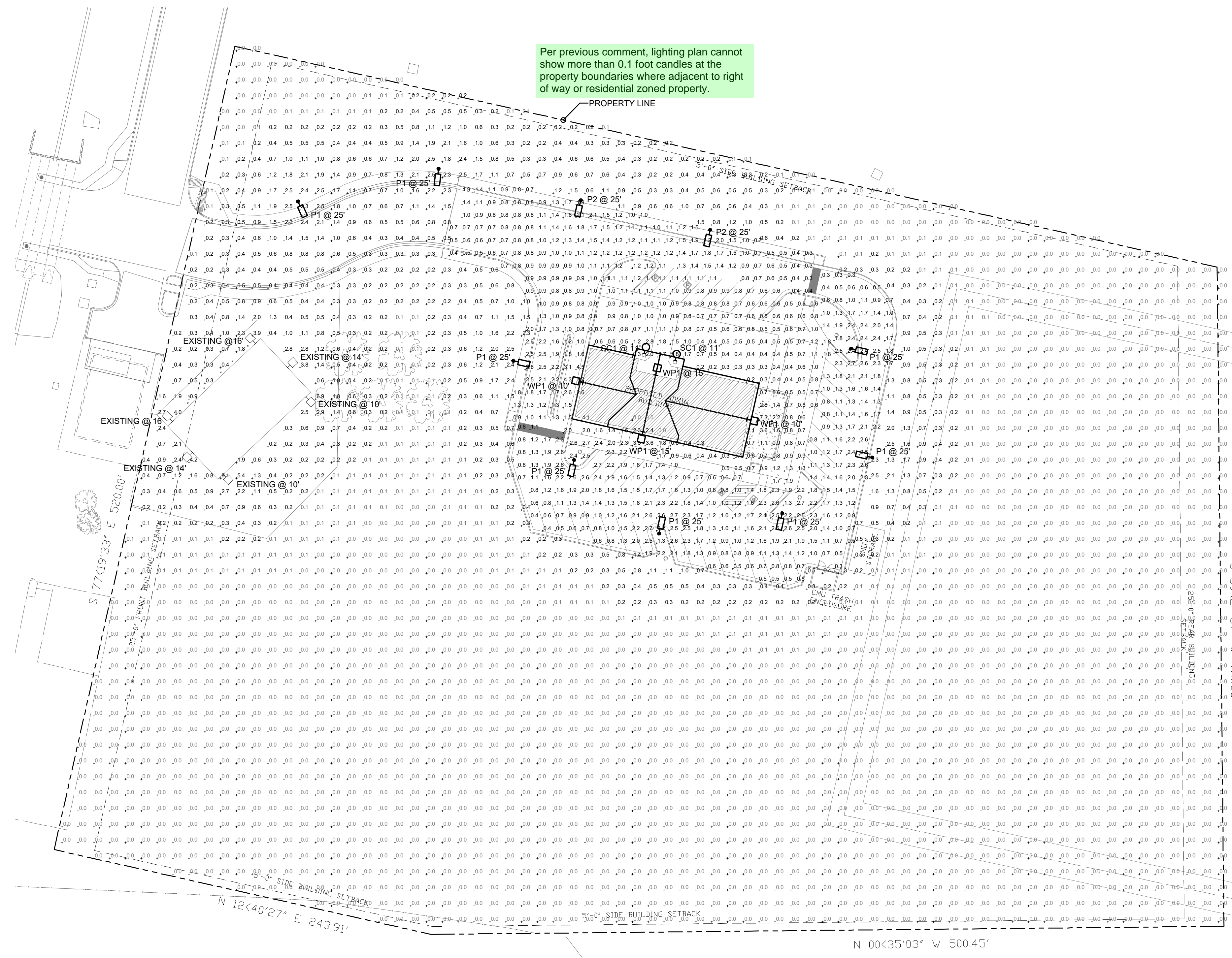
**ES0.1**

**LIGHT FIXTURE SCHEDULE**

MARK	MANUF.	MODEL	LAMP		MOUNTING	DESCRIPTION	VOLTAGE	TOTAL WATTS
			QTY.	WATT				
P1	LITHONIA	DSX1 LED P1 40K VLS HS FBZ	1	85.5	LED POLE @ 25'-0"	AREA LUMINAIRE	120	85.5
P2	LITHONIA	DSX1 LED 30C 1000 40K TFTM MVOLT MA	1	104.7	LED POLE @ 25'-0"	AREA LUMINAIRE	120	104.7
SC1	LITHONIA	OLLWU LED P1 40K 120 DDB	1	13.8	LED SURFACE	SCONCE	120	13.8
WP1	LITHONIA	ARC1 LED P2 40K	1	16.8	LED SURFACE	WALLPACK	120	16.8

**CALCULATION ZONE STATISTICS**

DESCRIPTION	SYMBOL (fc)	AVERAGE (fc)	MAXIMUM (fc)	MINIMUM (fc)	MAX./MIN. (fc)	AVG./MIN. (fc)
PARKING LOT	+	1.5	2.7	0.3	9.0:1	5.0:1
BLDG. PARAMETER	+	1.0	5.6	0.0	N/A	N/A
DRIVE WAY	+	1.2	4.3	0.2	21.5:1	6.0:1
TO PROP. BOUNDARY	+	0.1	6.3	0.0	N/A	N/A



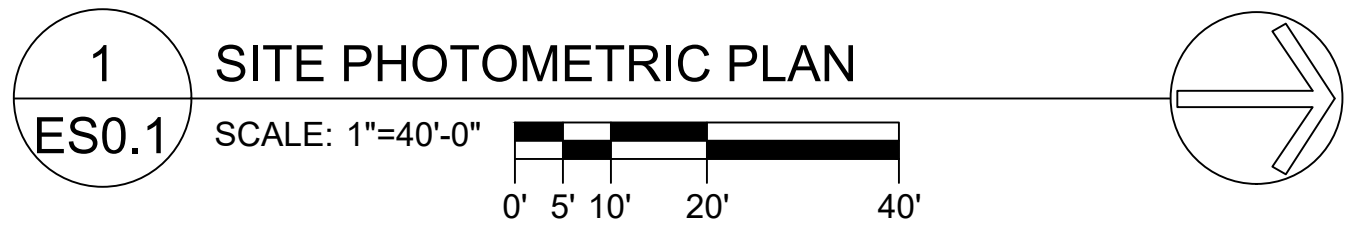
**4** ARC1 WALLPACK LUMINAIRE  
 ES0.1 SCALE: NONE



**3** OLLWU SCONCE LUMINAIRE  
 ES0.1 SCALE: NONE



**2** DSX1 AREA LUMINAIRE  
 ES0.1 SCALE: NONE



**LITHONIA LIGHTING**

**Outdoor General Purpose**

**OLLWD & OLLWU**  
LED WALL CYLINDER LIGHT

**FEATURES & SPECIFICATIONS**

**INTENDED USE:** For use in outdoor general purpose applications. Ideal for applications such as office buildings and commercial buildings.

**CONSTRUCTION:** Cast aluminum housing with stainless steel trim in either dark bronze or white finish.

**OPICS:** AIA certified.

**400K CCT LED:** High efficacy LEDs for long life and low maintenance.

**LUMEN MAINTENANCE:** The OLLWD and OLLWU are rated to maintain 70% of initial lumen output over 50,000 hours average life span. See Lighting Facts table on page 2 for performance details.

**ELECTRICAL:** 100V line voltage, 50/60 Hz.

**INSTALLATION:** Surface mount or recessed (not applicable for OLLWD).

**LISTINGS:** UL Listed for use in outdoor applications.

**WARRANTY:** 5-year limited warranty. This is the only warranty provided and no other statements in this specification document are intended to constitute a warranty.

**Notes:** 1. See Lighting Facts table on page 2 for performance details. 2. See Lighting Facts table on page 2 for performance details.

**Ordering Information**

Series	Performance Package	Color Temperature (CCT)	Voltage	Finish
OLLWD LED	Standard	400K	100V/277V	Dark Bronze
OLLWU LED	Standard	400K	100V/277V	White

**OLLWD & OLLWU LED Wall Cylinder Light**

**PHOTOMETRICS**

See complete photometric reports or download .ies files for this product at [www.lithonia.com](http://www.lithonia.com).

**OLLWD**

**OLLWU**

**LED Lighting Facts**

Series	Light Output (Lumens)	Power (Watt)	Efficiency (lm/W)
OLLWD	833	10.0	83.3
OLLWU	842	10.0	84.2

**Ordering Information**

Series	Performance Package	Color Temperature (CCT)	Voltage	Finish
OLLWD LED	Standard	400K	100V/277V	Dark Bronze
OLLWU LED	Standard	400K	100V/277V	White

**dSeries**

**D-Series Size 1**  
LED Area Luminaire

**Specifications**

Depth: 6.5" (165mm)  
Height: 9" (229mm)  
Width: 11" (279mm)  
Weight: 27 lbs (12.2kg)

**Introduction**

The modern styling of the D-Series is striking yet unobtrusive - making a bold, progressive statement even as it blends seamlessly with its environment. The D-Series distills the benefits of the latest in LED technology into a high performance, high efficacy, long-life luminaire.

The outstanding photometric performance results in sites with excellent uniformity, greater pole spacing and lower power density. It is ideal for replacing up to 70W metal halide in pedestrian and area lighting applications with typical energy savings of 60% and expected service life of over 100,000 hours.

**Ordering Information**

**EXAMPLE: DSX1 LED P7 40K 3TM MVOLT SPA NLAIR2 PIRNH DDBX0**

Code	Series	Performance Package	Color Temperature (CCT)	Voltage	Finish
DSX1 LED	P7	Standard	400K	100V/277V	Dark Bronze

**Ordering Information**

**EXAMPLE: DSX1 LED P7 40K 3TM MVOLT SPA NLAIR2 PIRNH DDBX0**

Code	Series	Performance Package	Color Temperature (CCT)	Voltage	Finish
DSX1 LED	P7	Standard	400K	100V/277V	Dark Bronze

**Accessories**

**Options**

**Drilling**

**DSX1 Area Luminaire - EPA**

Mounting Type	100V	277V	100V	277V	100V	277V
Standard	1.00	1.00	1.00	1.00	1.00	1.00

**Photometric Diagrams**

See complete photometric reports or download .ies files for this product at [www.lithonia.com](http://www.lithonia.com).

**Emergency Egress Options**

**Emergency Battery Backup**

The emergency battery backup is integral to the luminaire - no external housing required. This design provides reliable emergency operation while maintaining the aesthetics of the product. All emergency battery backup configurations include an independent secondary driver with an integral relay to immediately detect loss of normal power and automatically energize the luminaire for a minimum duration of 90 minutes (maximum duration of three hours from the time normal power is lost) and maintain a minimum of 60% of the light output at the end of 90 minutes.

**CONSTRUCTION:** The die-cast aluminum housing and clear lens are made from high quality materials. The multiple step injection molded lens and emergency battery backup are made from high quality materials. The die-cast aluminum housing and clear lens are made from high quality materials.

**OPICS:** AIA certified.

**Mounting Options & Accessories**

**E4WH - EW Emergency Battery Backup**  
D = 6.5"  
H = 5"  
W = 11"

**B8W - Standard Back Box**  
D = 1.5"  
H = 4"  
W = 5.5"

**FEATURES & SPECIFICATIONS**

**INTENDED USE:** The emergency battery backup is integral to the luminaire - no external housing required. This design provides reliable emergency operation while maintaining the aesthetics of the product.

**CONSTRUCTION:** The die-cast aluminum housing and clear lens are made from high quality materials. The multiple step injection molded lens and emergency battery backup are made from high quality materials.

**OPICS:** AIA certified.

**ARC1 LED**  
Architectural Wall Luminaire

**Specifications**

Depth (D1): 4.5"  
Depth (D2): 4.75"  
Height: 9"  
Width: 11"  
Weight: 7 lbs (without options)

**Introduction**

The Lithonia Lighting ARC1 LED wall-mounted luminaire provides both architectural styling and visually comfortable illumination while providing the high energy savings and low initial costs for quick financial payback.

ARC1 delivers up to 1,000 lumens with a soft, non-glare light source, creating a visually comfortable environment. The compact size of ARC1, with its integrated emergency battery backup option, is ideal for over-the-door applications.

**Ordering Information**

**EXAMPLE: ARC1 LED P2 40K MVOLT PE DDBX0**

Code	Series	Performance Package	Color Temperature (CCT)	Voltage	Finish
ARC1 LED	P2	Standard	400K	100V/277V	Dark Bronze

**Accessories**

**Notes:** 1. See Lighting Facts table on page 2 for performance details. 2. See Lighting Facts table on page 2 for performance details.

**Performance Data**

**Lumen Output**

Lumen output is based on photometric test performed in accordance with IESNA LM-79-09. Data is considered to be representative of the configuration shown, within the tolerance allowed by Lighting Facts. Contact Lithonia for performance data for the configuration shown.

Performance	Series	Package	Color Temperature (CCT)	Voltage	Finish
P1	100V	Standard	400K	100V/277V	Dark Bronze

**Electrical Load**

Performance	Series	Package	Color Temperature (CCT)	Voltage	Finish
P1	100V	Standard	400K	100V/277V	Dark Bronze

**Lumen Ambient Temperature (LAT) Multiplier**

Temperature (°C)	Multiplier
0°C	1.04
10°C	1.02
20°C	1.01
30°C	0.99
40°C	0.97

**Projected LED Lumen Maintenance**

Operating Hours	0	25,000	50,000	100,000
Lumens Maintenance Factor	0.97	>0.96	>0.95	>0.91

**Photometric Diagrams**

See complete photometric reports or download .ies files for this product at [www.lithonia.com](http://www.lithonia.com).

**Emergency Egress Options**

**Emergency Battery Backup**

The emergency battery backup is integral to the luminaire - no external housing required. This design provides reliable emergency operation while maintaining the aesthetics of the product. All emergency battery backup configurations include an independent secondary driver with an integral relay to immediately detect loss of normal power and automatically energize the luminaire for a minimum duration of 90 minutes (maximum duration of three hours from the time normal power is lost) and maintain a minimum of 60% of the light output at the end of 90 minutes.

**CONSTRUCTION:** The die-cast aluminum housing and clear lens are made from high quality materials. The multiple step injection molded lens and emergency battery backup are made from high quality materials.

**OPICS:** AIA certified.

**Mounting Options & Accessories**

**E4WH - EW Emergency Battery Backup**  
D = 6.5"  
H = 5"  
W = 11"

**B8W - Standard Back Box**  
D = 1.5"  
H = 4"  
W = 5.5"

**FEATURES & SPECIFICATIONS**

**INTENDED USE:** The emergency battery backup is integral to the luminaire - no external housing required. This design provides reliable emergency operation while maintaining the aesthetics of the product.

**CONSTRUCTION:** The die-cast aluminum housing and clear lens are made from high quality materials. The multiple step injection molded lens and emergency battery backup are made from high quality materials.

**OPICS:** AIA certified.

**Photometric Diagrams**

See complete photometric reports or download .ies files for this product at [www.lithonia.com](http://www.lithonia.com).

**Emergency Egress Options**

**Emergency Battery Backup**

The emergency battery backup is integral to the luminaire - no external housing required. This design provides reliable emergency operation while maintaining the aesthetics of the product. All emergency battery backup configurations include an independent secondary driver with an integral relay to immediately detect loss of normal power and automatically energize the luminaire for a minimum duration of 90 minutes (maximum duration of three hours from the time normal power is lost) and maintain a minimum of 60% of the light output at the end of 90 minutes.

**CONSTRUCTION:** The die-cast aluminum housing and clear lens are made from high quality materials. The multiple step injection molded lens and emergency battery backup are made from high quality materials.

**OPICS:** AIA certified.

**Mounting Options & Accessories**

**E4WH - EW Emergency Battery Backup**  
D = 6.5"  
H = 5"  
W = 11"

**B8W - Standard Back Box**  
D = 1.5"  
H = 4"  
W = 5.5"

**FEATURES & SPECIFICATIONS**

**INTENDED USE:** The emergency battery backup is integral to the luminaire - no external housing required. This design provides reliable emergency operation while maintaining the aesthetics of the product.

**CONSTRUCTION:** The die-cast aluminum housing and clear lens are made from high quality materials. The multiple step injection molded lens and emergency battery backup are made from high quality materials.

**OPICS:** AIA certified.

**cShea Consulting, LLC**

MECHANICAL + ELECTRICAL + PLUMBING

4445 Northpark Dr. Suite 200  
Colorado Springs, CO 80907  
msh@sheaconsulting.com  
Project #: 21-1847

**CO. CTR. METRO. DISTRICT ADMINISTRATION BUILDING**

9696 FLAGSTONE STREET  
COLORADO SPRINGS, CO 80916

**Revisions**

#	DESCRIPTION	DATE

**DATE** 05-27-2021  
**CHECKED** MRM  
**DRAWN BY** CCF

**ES0.2**

PCD FILE #PPR-21-051

**T-BONE CONSTRUCTION, INC.**  
GENERAL CONTRACTOR

Design Development Consultants @

1310 FORD STREET  
COLORADO SPRINGS, CO 80915  
(719) 570-1456

(C) ALL RIGHTS RESERVED

**CO. CTR. METRO. DISTRICT ADMINISTRATION BUILDING**

9696 FLAGSTONE STREET  
COLORADO SPRINGS, CO 80916

**CDD'S**

**DATE** 05-27-2021  
**CHECKED** MRM  
**DRAWN BY** CCF

**ES0.2**

PCD FILE #PPR-21-051