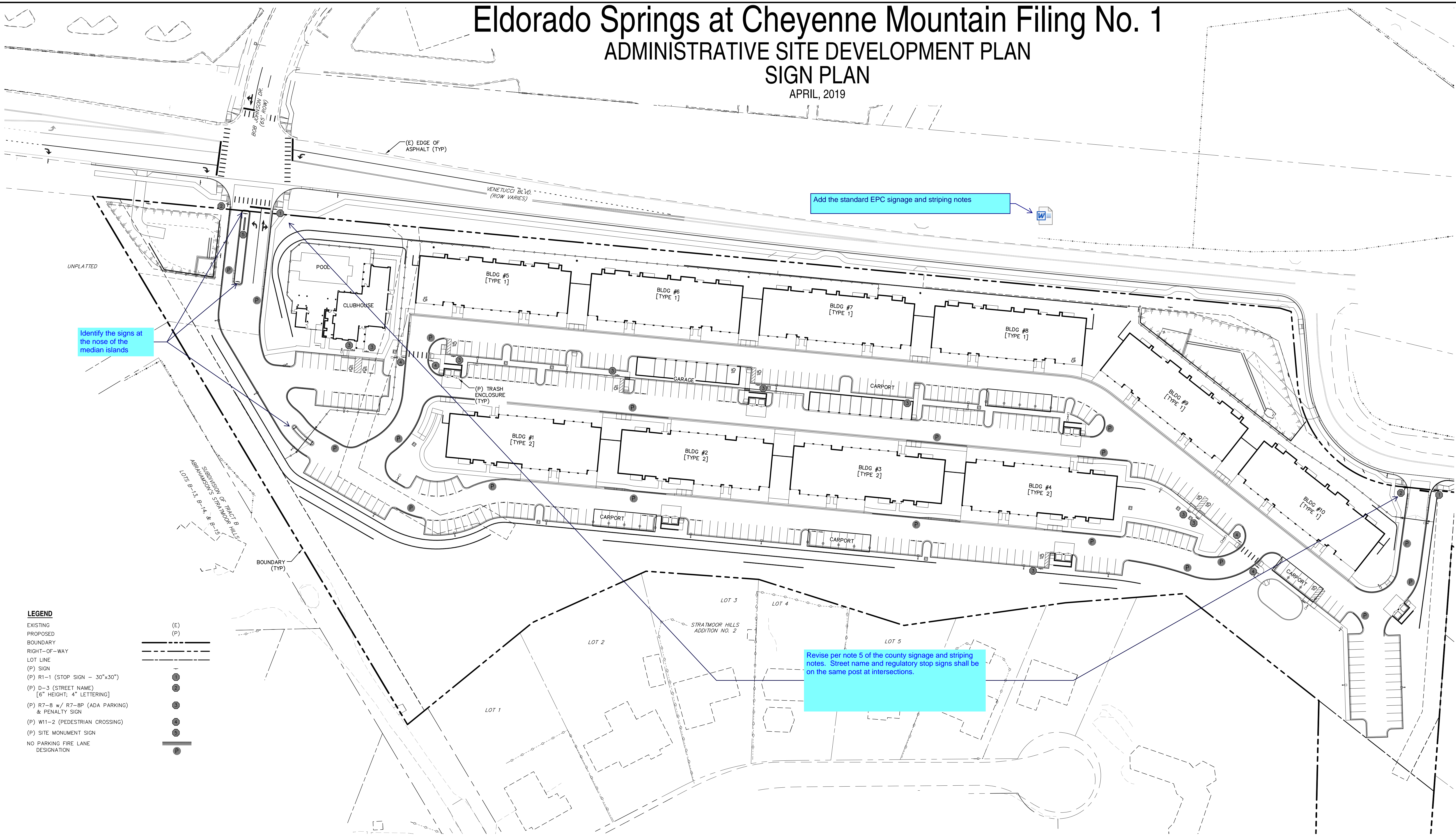


Eldorado Springs at Cheyenne Mountain Filing No. 1

ADMINISTRATIVE SITE DEVELOPMENT PLAN

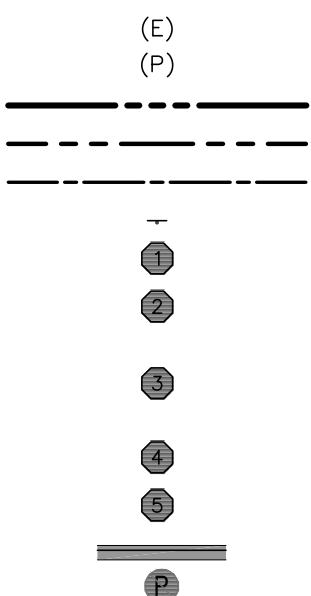
SIGN PLAN

APRIL, 2019



LEGEND

- EXISTING
- PROPOSED
- BOUNDARY
- RIGHT-OF-WAY
- LOT LINE
- (P) SIGN
- (P) R1-1 (STOP SIGN - 30"x30")
- (P) D-3 (STREET NAME) [6" HEIGHT; 4" LETTERING]
- (P) R7-8 w/ R7-BP (ADA PARKING) & PENALTY SIGN
- (P) W11-2 (PEDESTRIAN CROSSING)
- (P) SITE MONUMENT SIGN
- NO PARKING FIRE LANE DESIGNATION

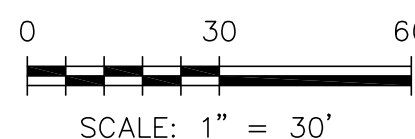
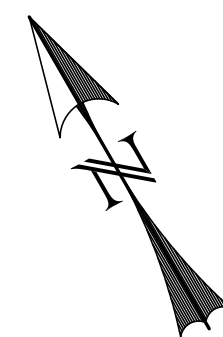


Eldorado Springs

ADMINISTRATIVE SITE DEVELOPMENT PLAN

SOUTH VENETUCCI BOULEVARD

EL PASO COUNTY, STATE OF COLORADO



DATE: 06.27.2019
DRAWN BY: CDK
CHECKED BY: CDK

REV.	DESCRIPTION	DATE

NOT FOR CONSTRUCTION
COPYRIGHT 2019
THIS DOCUMENT IS AN INSTRUMENT OF SERVICE, AND AS SUCH REMAINS THE PROPERTY OF THE CONSULTANT. PERMISSION FOR USE OF THIS DOCUMENT IS LIMITED AND CAN BE EXTENDED ONLY BY WRITTEN AGREEMENT WITH ALTITUDE LAND CONSULTANTS.

SHEET SDP13
WESTWORKS PROJECT # 91807

COUNTY FILE NO. PPR-11-001 - ADMINISTRATIVE SITE DEVELOPMENT PLAN

ALTITUDE
LAND CONSULTANTS
PLANNING LANDSCAPE
2727 N. CASCADE AVE., SUITE #160
COLORADO SPRINGS, CO 80907
WWW.ALTITUDELANDCO.COM

WAY ARCHITECTS, P.C.
318 North Tejon
Colorado Springs, Colorado 80903
(719) 473-8400 FAX (719) 473-0400
www.waygroup.com

WESTWORKS
ENGINEERING
1023 W. COLORADO COLORADO SPRINGS, CO 80904 (719) 685-1670