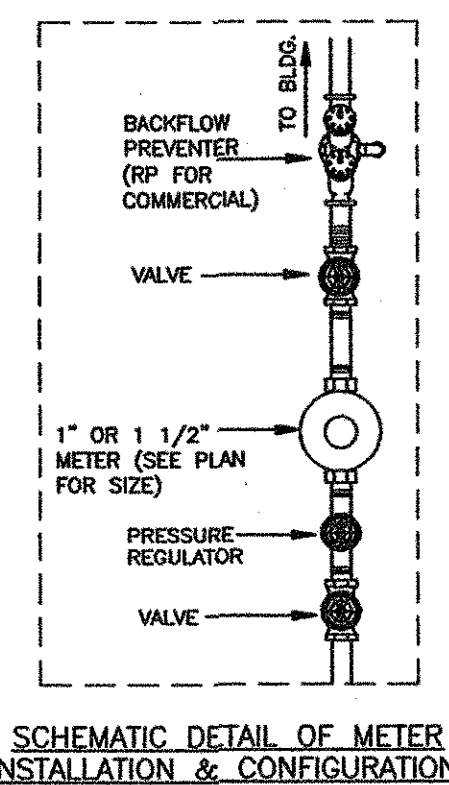
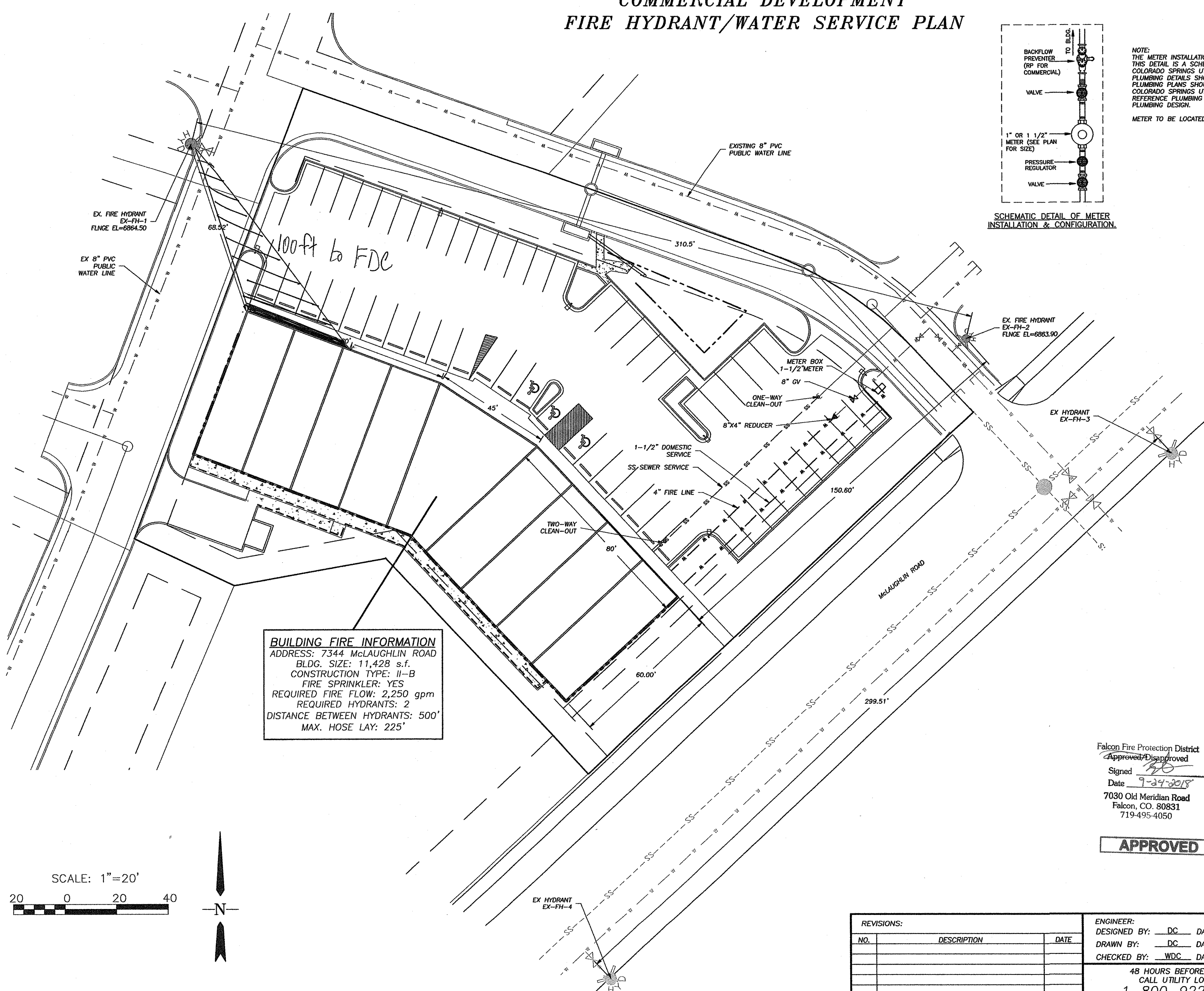
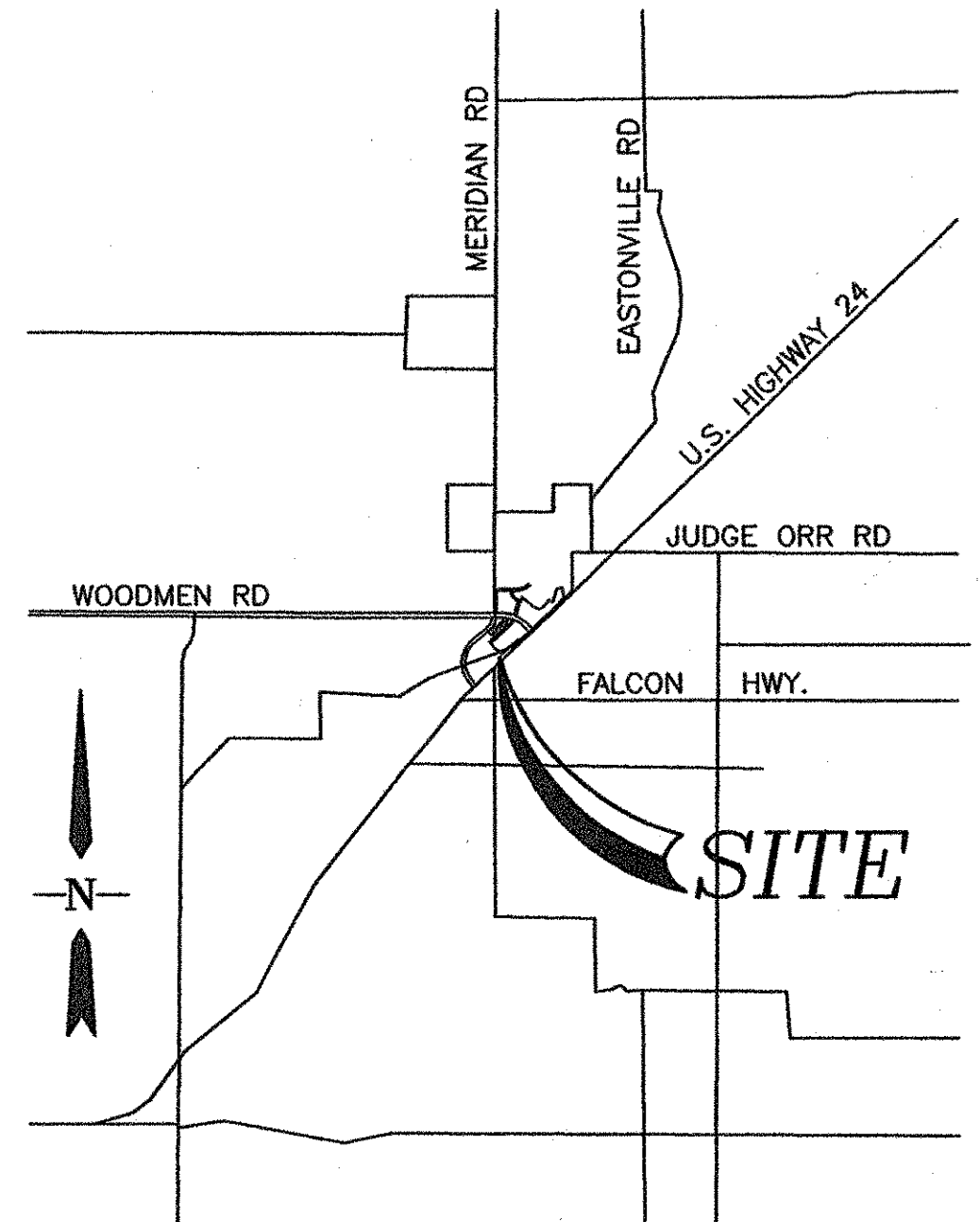


**7344 MCLAUGHLIN ROAD
LOT 3, BECKETT AT WOODMEN HILLS FILING 3
COMMERCIAL DEVELOPMENT
FIRE HYDRANT/WATER SERVICE PLAN**



NOTE:
THE METER INSTALLATION CONFIGURATION ON THIS DETAIL IS A SCHEMATIC REQUIREMENT OF COLORADO SPRINGS UTILITIES. THE INTERIOR PLUMBING DETAILS SHOWN ON THE APPROVED PLUMBING PLANS SHOULD CONFORM TO THE COLORADO SPRINGS UTILITIES STANDARDS. REFERENCE PLUMBING PLAN FOR INTERIOR PLUMBING DESIGN.
METER TO BE LOCATED INSIDE EACH BUILDING



SITE INFORMATION
OWNER: BECKETT FALCON INVESTMENTS, LLP
104 SOUTH CASCADE AVE, SUITE 201
COLORADO SPRINGS, CO 80903
ENGINEER: SPRINGS ENGINEERING
31 N. TEJON, SUITE 315
COLORADO SPRINGS, CO 80903
LEGAL DESCRIPTION:
LOT 3 BECKETT AT WOODMEN HILLS FILING 3
ADDRESS: 7344 MCLAUGHLIN ROAD
LOT AREA: 1.07 ACRES
SCHEDULE #: 4307202030
EXISTING ZONE: CR
THE REGULATIONS USED TO DETERMINE THE REQUIRED FIRE FLOW FOR THIS PROJECT ARE FOUND IN THE 2003 EDITION OF THE INTERNATIONAL FIRE CODE, SECTION 508 AND APPENDICES B AND C.

BUILDING FIRE INFORMATION
ADDRESS: 7344 MCLAUGHLIN ROAD
BLDG. SIZE: 11,428 s.f.
CONSTRUCTION TYPE: II-B
FIRE SPRINKLER: YES
REQUIRED FIRE FLOW: 2,250 gpm
REQUIRED HYDRANTS: 2
DISTANCE BETWEEN HYDRANTS: 500'
MAX. HOSE LAY: 225'

FIRE FLOW CALCULATIONS

DATE OF CALCULATION	DECEMBER 1, 2008
PROJECT LOCATION	7344 MCLAUGHLIN ROAD
PROJECT ENGINEER	WILLIAM D CHAFFIN, SPRINGS ENGINEERING
FAX#	719-227-7392
PHONE#	719-227-7388
FIRE HYDRANT LOCATION	HYDRANT EX-FH-1 FLANGE ELEVATION 8884.50 HYDRANT EX-FH-2 FLANGE ELEVATION 8863.90 HYDRANT EX-FH-3 FLANGE ELEVATION 8863.90 HYDRANT EX-FH-4 FLANGE ELEVATION 8857.90
FLOW @ 20 psi RESIDUAL	HYDRANT EX-FH-1: 3,561 GPM HYDRANT EX-FH-2: 3,580 GPM HYDRANT EX-FH-3: 3,711 GPM HYDRANT EX-FH-4: 3,663 GPM

ACCORDING TO THE MODELED CALCULATIONS REVIEWED BY THE GOVERNING WATER DISTRICT AND/OR COLORADO REGISTERED CIVIL ENGINEER/DESIGNER, THE THEORETICAL AVAILABLE FIRE FLOW AT FH-18 IS 3,585 GALLONS PER MINUTE AND FH-20 IS 3,585 GALLONS PER MINUTE UNDER MAXIMUM DAILY DEMAND CONDITIONS AT 20 PSI RESIDUAL. THE ACTUAL FIRE FLOW MAY VARY DUE TO VARIOUS PARAMETERS.
UPON DETAILED REVIEW OF THE AVAILABLE WATER SUPPLY, FIRE HYDRANT LOCATIONS AND HOSE LAY DISTANCES, THESE PLANS ARE HEREBY CONSIDERED APPROVED.

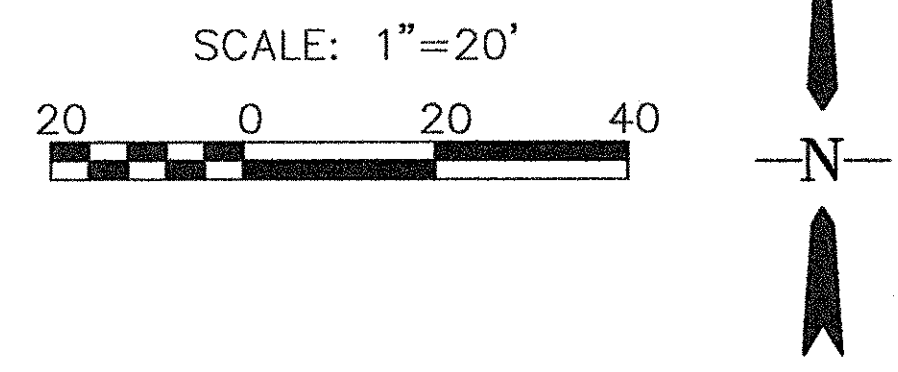
Falcon Fire Protection District
Approved/Disapproved
Signed: *[Signature]*
Date: 7-27-2015
7030 Old Meridian Road
Falcon, CO. 80831
719-495-4050

APPROVED

FALCON FIRE DEPARTMENT FIRE DEPARTMENT
FIRE DEPARTMENT SIGNATURE _____ DATE _____

LEGEND

- EX WATER -----W-----W-----
- EX SAN SEWER -----SS-----SS-----
- PR WATER SERVICE -----W-----W-----
- PR SAN SEWER SERVICE -----SS-----SS-----



REVISIONS:

NO.	DESCRIPTION	DATE

ENGINEER:
DESIGNED BY: DC DATE: 12-1-08
DRAWN BY: DC DATE: 12-1-08
CHECKED BY: WDC DATE: 12-1-08
48 HOURS BEFORE YOU DIG,
CALL UTILITY LOCATORS
1-800-922-1987
CITY OF COLORADO SPRINGS DEPT. OF UTILITIES
GAS, ELECTRIC, WATER AND WASTEWATER

SE Springs Engineering
31 N. TEJON, SUITE 315
COLORADO SPRINGS, CO 80903
P. (719) 227-7388
F. (719) 227-7392
PROJECT LOT 3, BECKETT AT WH
SHEET TITLE FIRE HYDRANT/SERVICE PLAN
FROM n/a TO n/a
JOB NO. 03-DC-0812 SHEET 1 OF 1