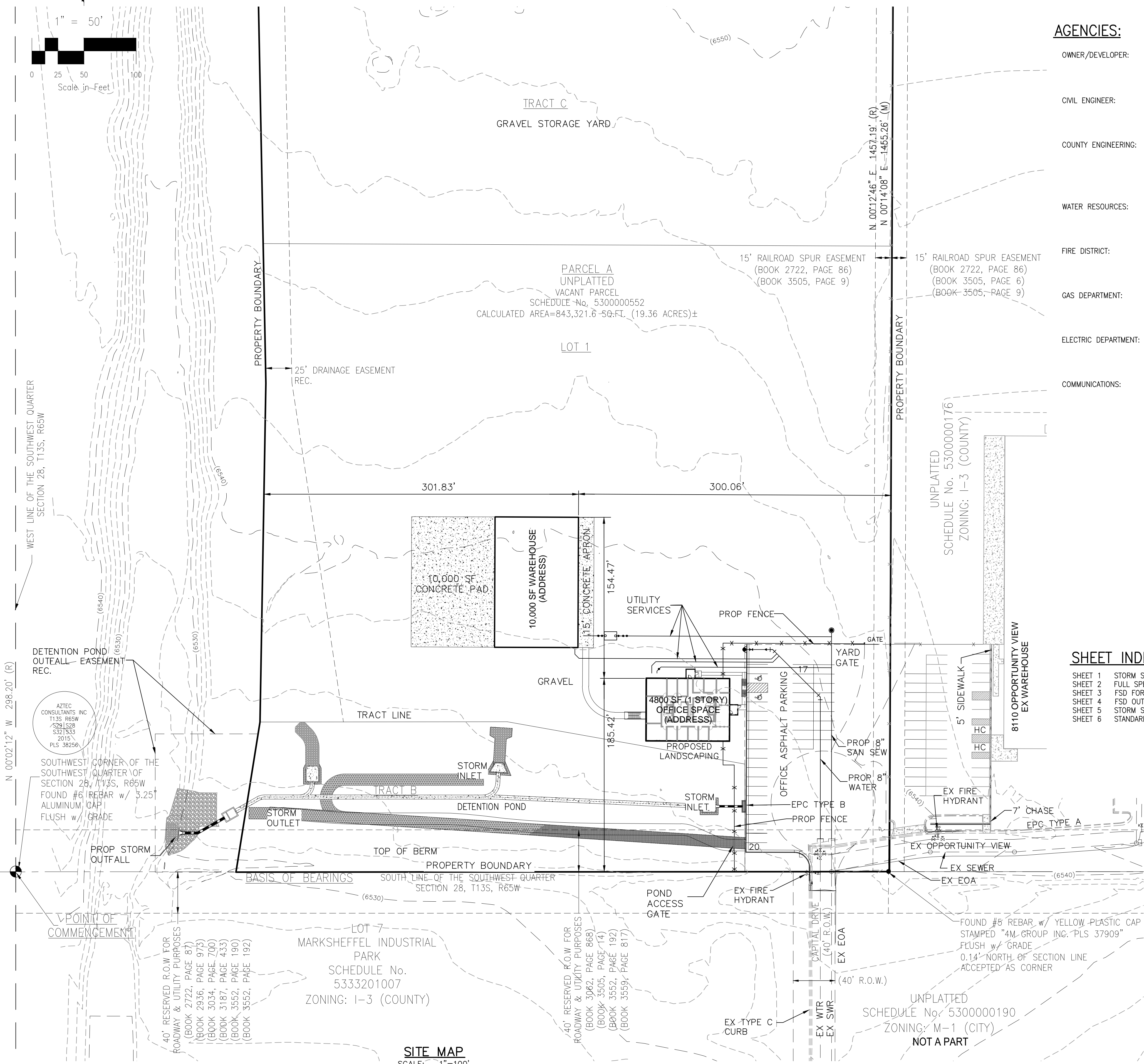


DWIRE YARD - STORMWATER & DETENTION POND PLANS

EL PASO COUNTY, STATE OF COLORADO

A PORTION OF THE SOUTHWEST QUARTER OF SECTION 28, TOWNSHIP 13 SOUTH, RANGE 65 WEST OF THE 6TH PRINCIPAL MERIDIAN,



AGENCIES:

OWNER/DEVELOPER: DL HOLDINGS LLC
6547 N. ACADEMY BLVD #523
COLORADO SPRINGS, CO 80918
JEFF DWIRE (719) 574-7123

CIVIL ENGINEER: M & S CIVIL CONSULTANTS, INC.
102 E. PIKES PEAK AVE, SUITE 500
COLORADO SPRINGS, CO 80903
VIRGIL A. SANCHEZ P.E. (719) 955-5485

COUNTY ENGINEERING: EL PASO COUNTY PLANNING AND COMMUNITY
DEVELOPMENT DEPARTMENT
2880 INTERNATIONAL CIRCLE, SUITE 110
COLORADO SPRINGS, CO 80910
JEFF RICE, P.E. (719) 520-6300

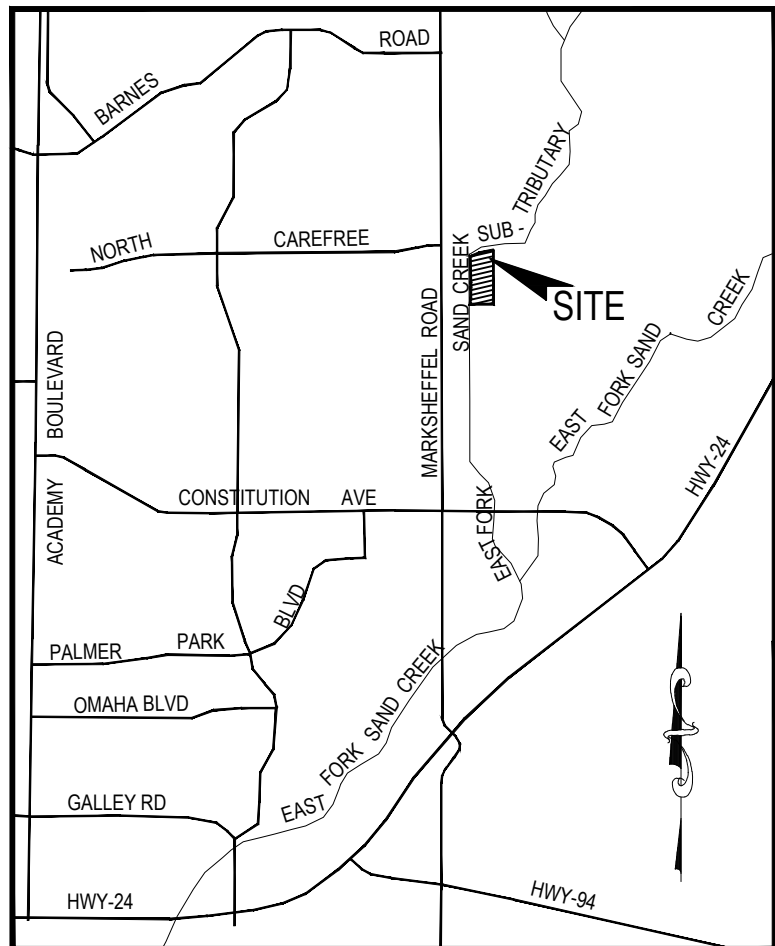
WATER RESOURCES: CHEROKEE METRO DISTRICT
6250 PALMER PARK, BLVD
COLORADO SPRINGS, CO 80915
JEFF MUNGER (719) 597-5080

FIRE DISTRICT: FALCON FIRE DISTRICT
7030 OLD MERIDIAN ROAD
FALCON, CO 80831
CHIEF TRENT HARWIG (719) 495-4050

GAS DEPARTMENT: COLORADO SPRINGS UTILITIES
7710 DURANT DR.
COLORADO SPRINGS, CO 80947
TIM WENDT (719) 668-3556

ELECTRIC DEPARTMENT: MOUNTAIN VIEW ELECTRIC
11140 E. WOODMEN ROAD
FALCON, CO 80831
(719) 495-2283

COMMUNICATIONS: QWEST COMMUNICATIONS
(U.N.C.C. LOCATORS) (800) 922-1987
AT&T (LOCATORS) (719) 635-3674



VICINITY MAP
N.T.S.

DESIGN ENGINEER'S STATEMENT

THESE DETAILED PLANS AND SPECIFICATIONS WERE PREPARED UNDER MY DIRECTION AND SUPERVISION. SAID PLANS AND SPECIFICATIONS HAVE BEEN PREPARED ACCORDING TO THE CRITERIA ESTABLISHED BY THE COUNTY FOR DETAILED ROADWAY, DRAINAGE, GRADING AND EROSION CONTROL PLANS AND SPECIFICATIONS, AND SAID PLANS AND SPECIFICATIONS ARE IN CONFORMITY WITH APPLICABLE MASTER DRAINAGE PLANS AND MASTER TRANSPORTATION PLANS. SAID PLANS AND SPECIFICATIONS MEET THE PURPOSES FOR WHICH THE PARTICULAR ROADWAY AND DRAINAGE FACILITIES ARE DESIGNED AND ARE CORRECT TO THE BEST OF MY KNOWLEDGE AND BELIEF. I ACCEPT RESPONSIBILITY FOR ANY LIABILITY CAUSED BY ANY NEGLIGENT ACTS, ERRORS OR OMISSIONS ON MY PART IN PREPARATION OF THESE DETAILED PLANS AND SPECIFICATIONS.



VIRGIL A. SANCHEZ, COLORADO P.E. #37160
FOR AND ON BEHALF OF M & S CIVIL CONSULTANTS, INC.

1-29-21

DATE

OWNER/DEVELOPER'S STATEMENT:

I, THE OWNER/DEVELOPER HAVE READ AND WILL COMPLY WITH ALL OF THE REQUIREMENTS SPECIFIED IN THESE DETAILED PLANS AND SPECIFICATIONS.

NAME:

2-1-21

DATE

DL Holdings, LLC

BUSINESS NAME:

6799 Bismark Rd. Suite A Colorado Springs, CO 80918

ADDRESS:

EL PASO COUNTY:

COUNTY PLAN REVIEW IS PROVIDED ONLY FOR GENERAL CONFORMANCE WITH COUNTY DESIGN CRITERIA. THE COUNTY IS NOT RESPONSIBLE FOR THE ACCURACY AND ADEQUACY OF THE DESIGN, DIMENSIONS, AND/OR ELEVATIONS WHICH SHALL BE CONFIRMED AT THE JOB SITE. THE COUNTY THROUGH THE APPROVAL OF THIS DOCUMENT ASSUMES NO RESPONSIBILITY FOR COMPLETENESS AND/OR ACCURACY OF THIS DOCUMENT.

FILED IN ACCORDANCE WITH THE REQUIREMENTS OF THE EL PASO COUNTY LAND DEVELOPMENT CODE, DRAINAGE CRITERIA, AND ENGINEERING CRITERIA MANUAL AS AMENDED.

IN ACCORDANCE WITH ECM SECTION 1.12, THESE CONSTRUCTION DOCUMENTS WILL BE VALID FOR CONSTRUCTION FOR A PERIOD OF 2 YEARS FROM THE DATE SIGNED BY THE EL PASO COUNTY ENGINEER. IF CONSTRUCTION HAS NOT STARTED WITHIN THOSE 2 YEARS, THE PLANS WILL NEED TO BE RESUBMITTED FOR APPROVAL, INCLUDING PAYMENT OF REVIEW FEES AT THE PLANNING AND COMMUNITY DEVELOPMENT DIRECTOR'S DISCRETION.

JENNIFER IRVINE, P.E.
COUNTY ENGINEER / ECM ADMINISTRATOR

DATE

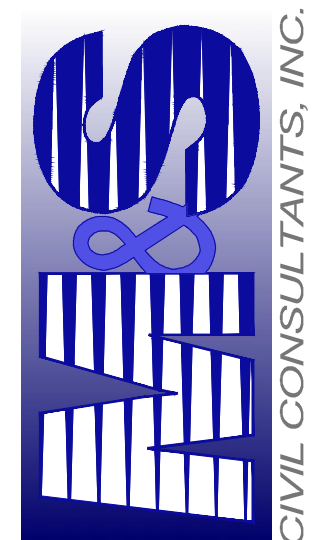
EL PASO COUNTY FILE NO. MS 20-002

DWIRE YARD

STORM SEWER & DETENTION POND PLANS

PROJECT NO. 43-117
SCALE: 1"=50'
HORIZONTAL: DLM
VERTICAL: JP
DATE: 11/16/2020
SHEET 1 OF 6
ST01

102 E PIKES PEAK AVE SUITE 300
COLORADO SPRINGS, CO 80903
PHONE: 719.955.5485



FOR AND ON
BEHALF OF
M&S CIVIL
CONSULTANTS,
INC.



REVISIONS: NO. DATE BY DESCRIPTION APPROV. BY DATE

THE ENGINEER PREPARING THESE PLANS WILL NOT BE RESPONSIBLE, OR LIABLE FOR, UNAUTHORIZED CHANGES TO OR USES OF THESE PLANS. ALL CHANGES TO THE PLANS MUST BE IN WRITING AND MUST BE APPROVED BY THE PREPARER OF THESE PLANS.

CAUTION



NTS



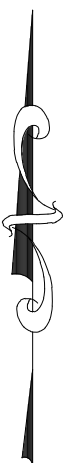
NTS



NOT TO SCALE



SECTION C-C



NTS



FOREBAY	WIDTH (W)	HEIGHT (H)
WEST	3.0" IN	1.4 FT
NORTH	3.0" IN	1.10 FT
EAST	3.0" IN	1.25 FT

(DEPENDANT UPON FIELD CONDITIONS)



NTS


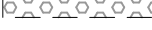



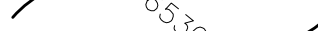



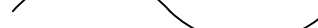

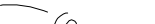


NOT TO SCALE



SECTION B-B



LEGEND

EX	EXISTING		STABILIZED MAINTENANCE ROAD ABOVE EURV
PROP	PROPOSED		STABILIZED MAINT. ROAD BELOW EURV
	PROP MAJ CONT		CONCRETE LOW FLOW CHANNEL
	PROP MIN CONT		
	EXIST MAJ CONT		SC250 EROSION CONTROL MATTING
	EXIST MIN CONT		EX. FLOW ARROW
	100YR FLOODPLAIN		PROP. FLOW ARROW
	RIPRAP TYP.		PROPERTY LINE
			PROP STORM SEWER PIPE


THE ENGINEER PREPARING THESE PLANS WILL NOT BE RESPONSIBLE, OR LIABLE FOR, UNAUTHORIZED CHANGES TO OR USES OF THESE PLANS. ALL CHANGES TO THE PLANS MUST BE IN WRITING AND MUST BE APPROVED BY THE PREPARER

CAUTION

VIRGIL A SANCHEZ COLORADO PE NO 37160

FOR BEHA M&S CONS INC

20 BOULDER CRESCENT, SUITE 110
COLORADO SPRINGS, CO 80903
PHONE: 719.955.5485



CIVIL CONSULTANTS, INC.

DWIRE STORAGE YARD

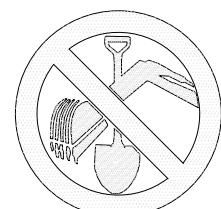
FSD FOREBAY AND OUTFALL DETAILS

PROJECT NO. 43-117	SCALE: HORIZONTAL: N/A VERTICAL:
DESIGNED BY: CMN	
DRAWN BY: CMN	

ST03

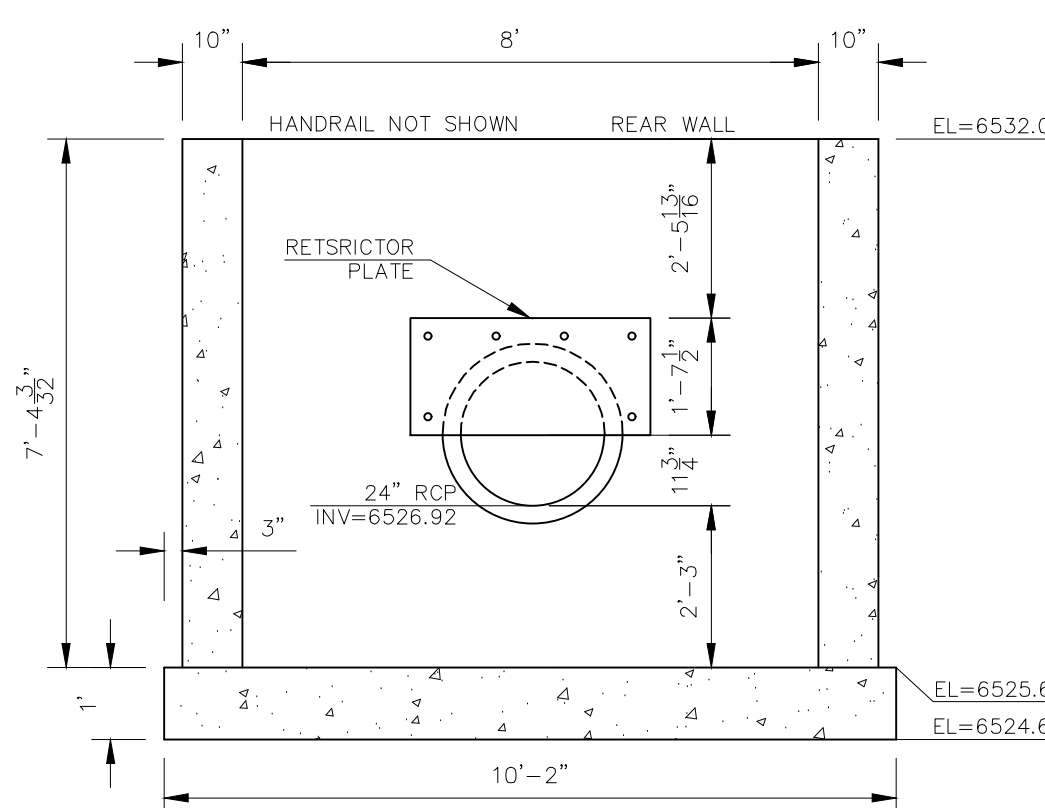
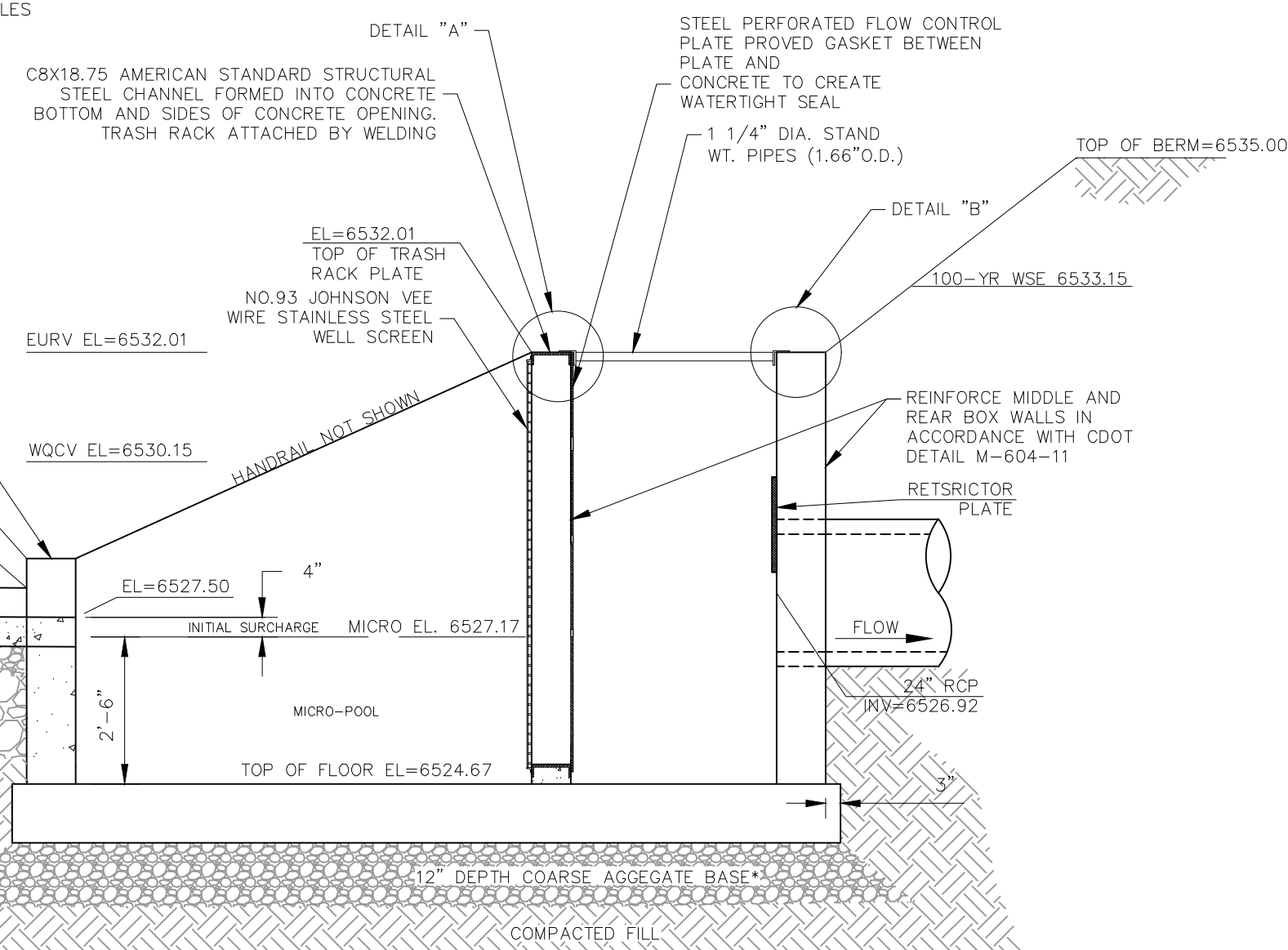
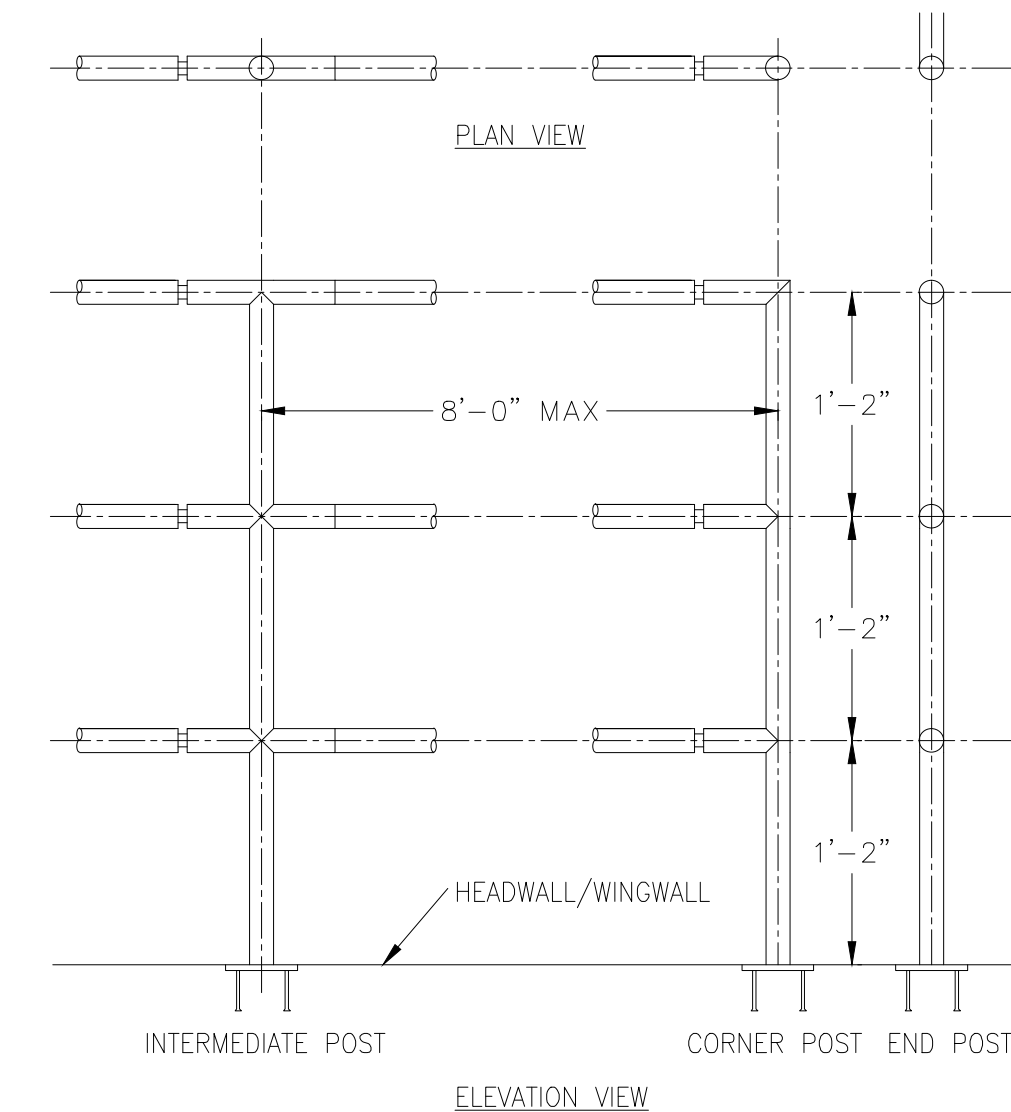
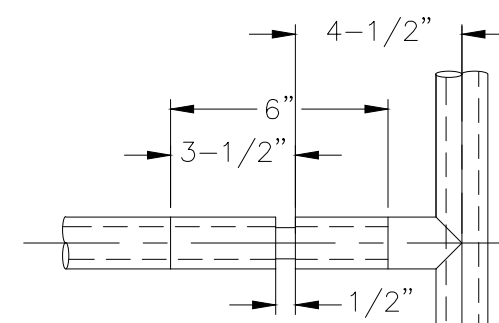
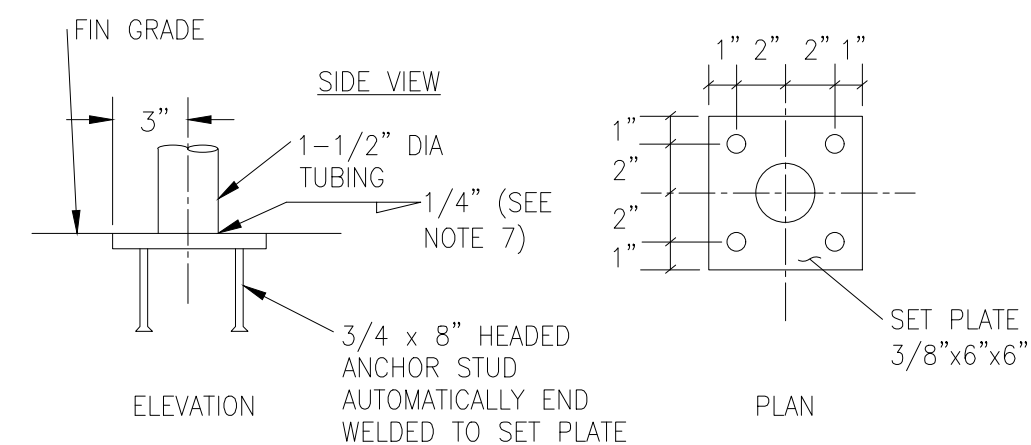
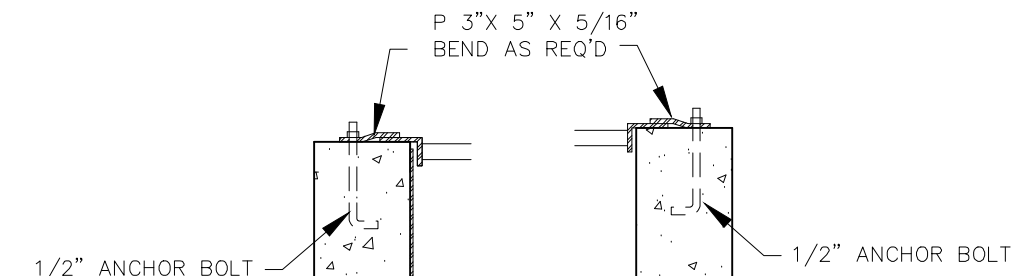
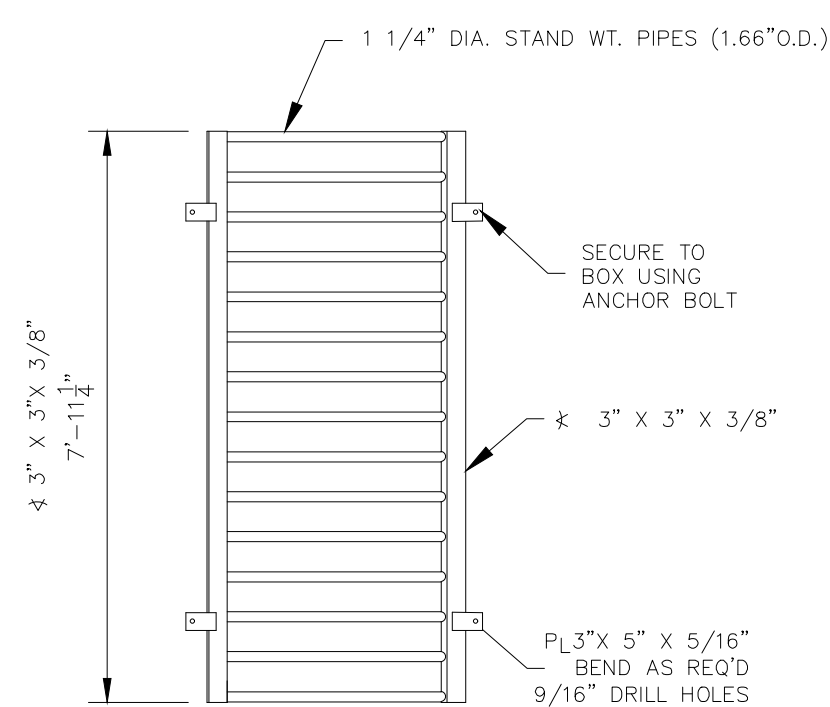
STATEMENT:

THE CITY OF COLORADO SPRINGS
RECOGNIZES THE DESIGN ENGINEER
AS HAVING RESPONSIBILITY FOR
THE DESIGN; THE CITY HAS
LIMITED ITS SCOPE OF REVIEW
ACCORDINGLY. RESUBMITTAL
REQUIRED IF CONSTRUCTION HAS
NOT COMMENCED WITHIN 180 DAYS
AFTER APPROVAL DATE.

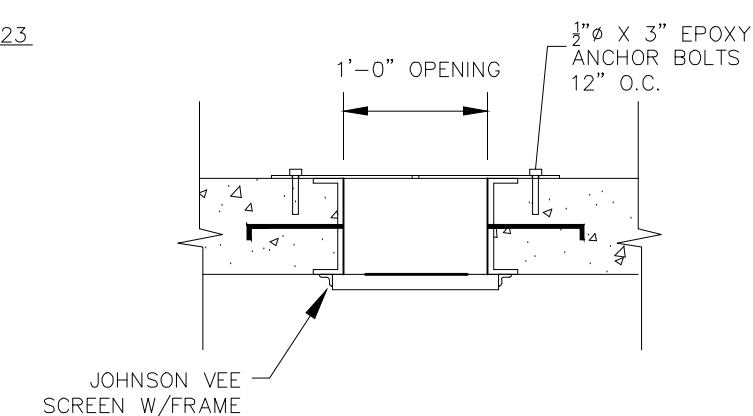
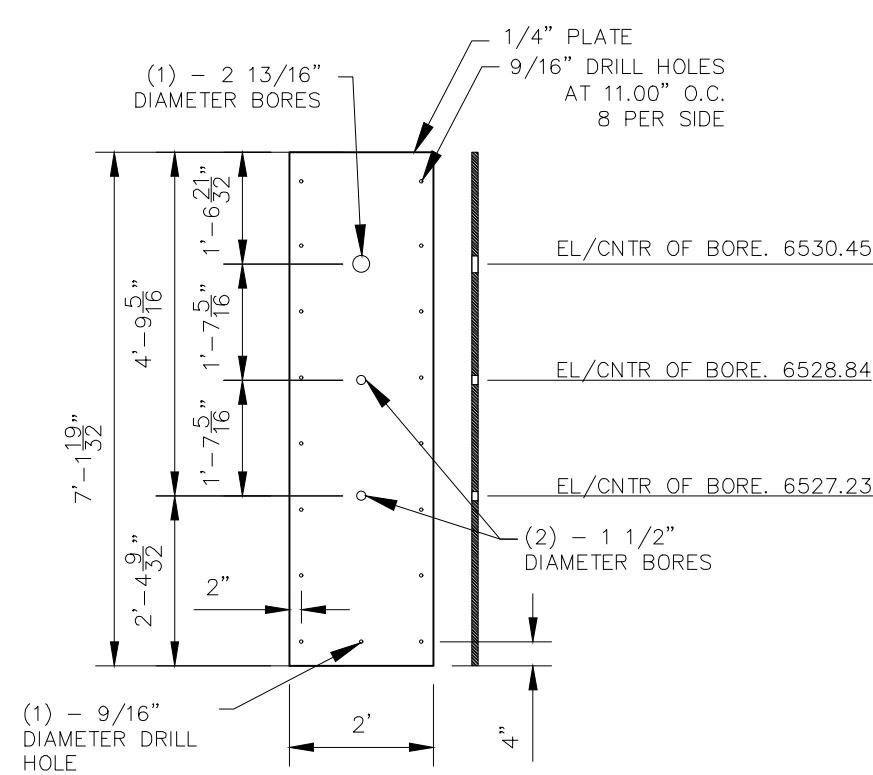


FOR LOCATING
& MARKING
GAS,
ELECTRIC,
WATER &
TELEPHONE
LINES

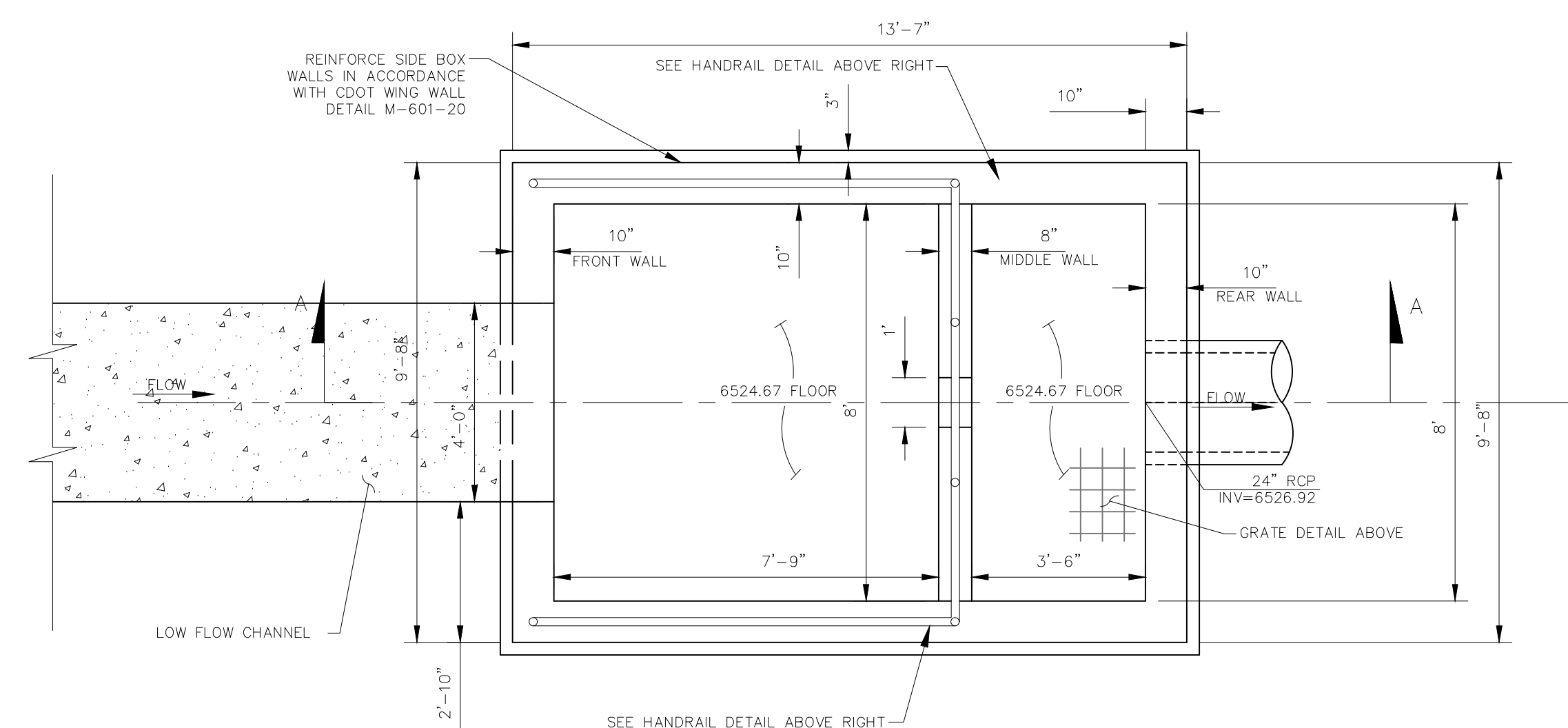
FOR BURIED UTILITY INFORMATION
48 HRS BEFORE YOU DIG
800-4-A-ROOT



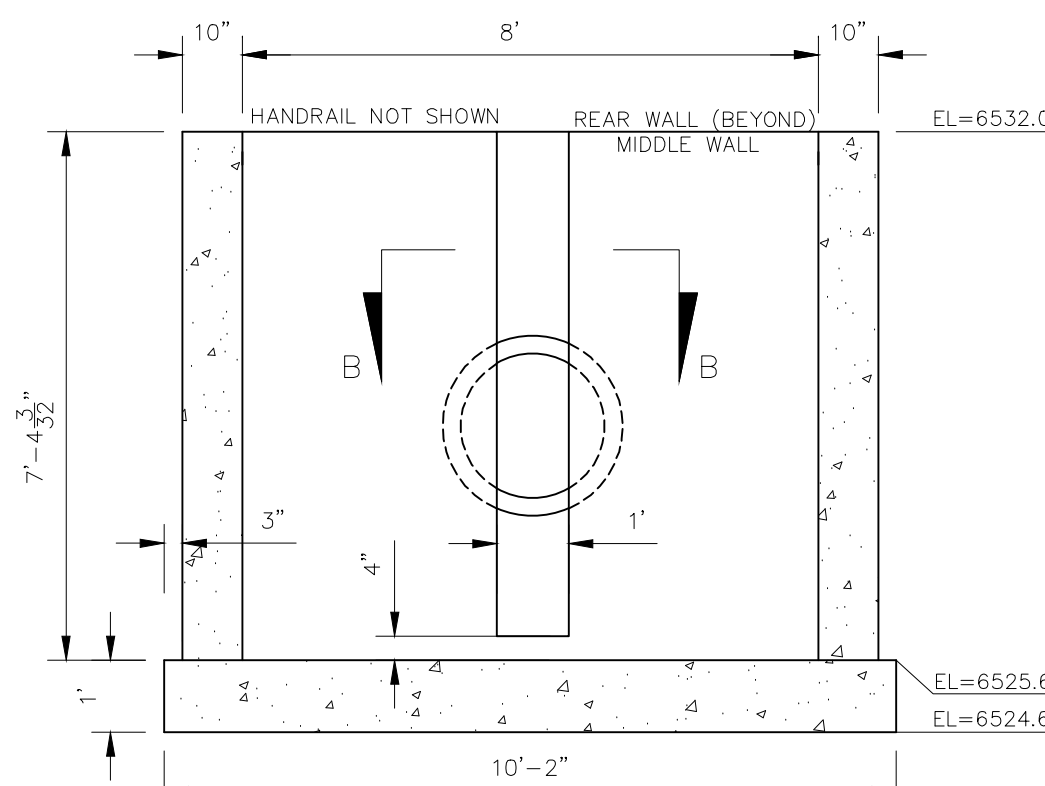
REAR WALL
NOT TO SCALE



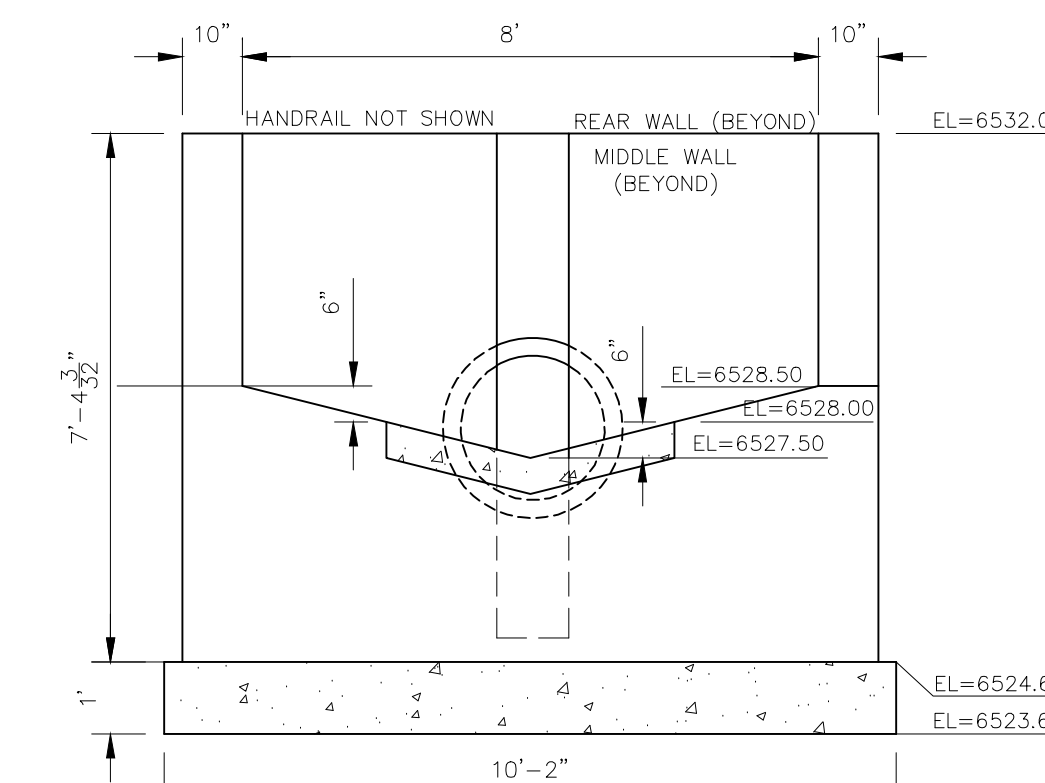
SECTION B-B
NOT TO SCALE



FDS POND WATER QUALITY OUTLET STRUCTURE
NOT TO SCALE

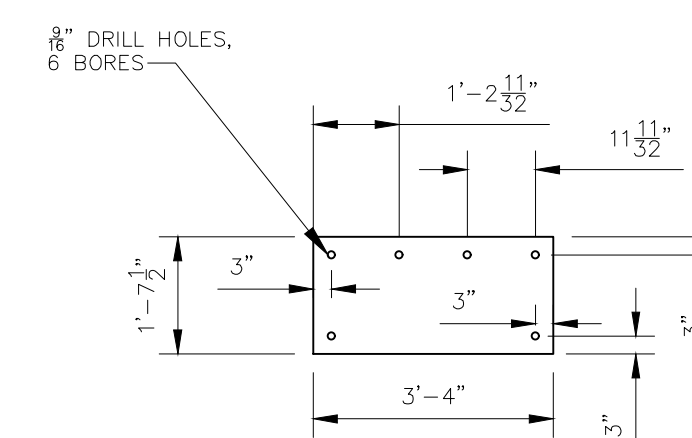


MIDDLE WALL
NOT TO SCALE

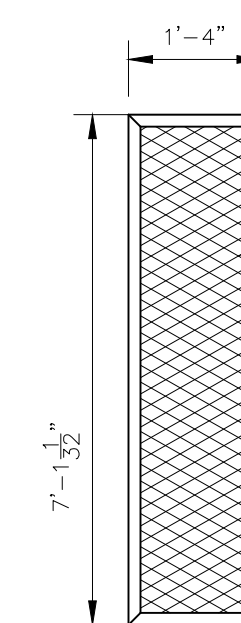


FRONT/STEM WALL
NOT TO SCALE

ORIFICE PLATE
NOT TO SCALE



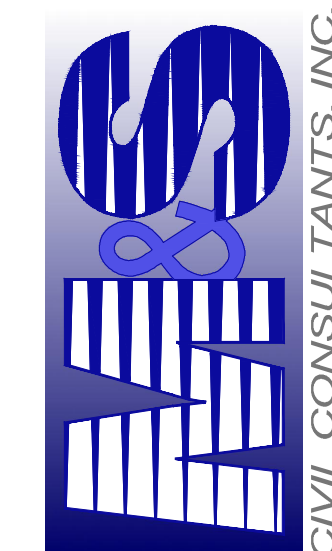
RESTRICTOR PLATE
NOT TO SCALE

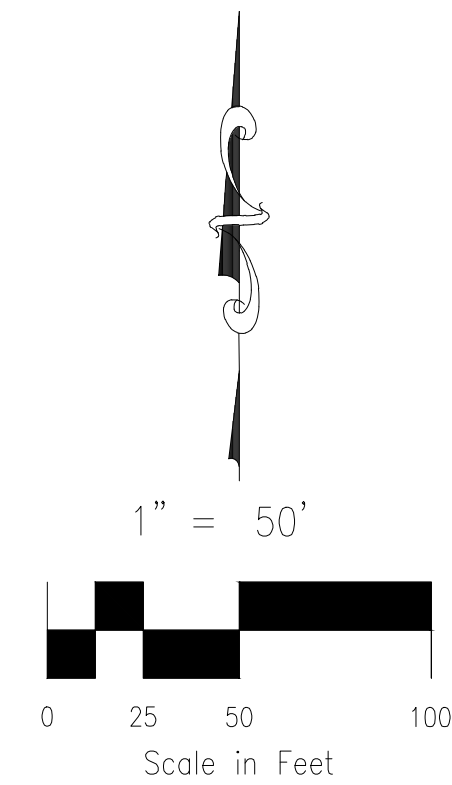


TRASH SCREEN DETAIL
NOT TO SCALE



FOR BURIED UTILITY INFORMATION
48 HRS BEFORE YOU DIG
CALL 1-800-922-1987






18" STORM SEWER
STA 1+00.00 TO STA 1+29.30



STATEMENT:

THE CITY OF COLORADO SPRINGS
 RECOGNIZES THE DESIGN ENGINEER
 AS HAVING RESPONSIBILITY FOR
 THE DESIGN. THE CITY HAS
 LIMITED ITS SCOPE OF REVIEW
 ACCORDINGLY. RESUBMITTAL
 REQUIRED IF CONSTRUCTION HAS
 NOT COMPLETED WITHIN 180 DAYS
 AFTER APPROVAL DATE.

 FOR MARKING
 GAS,
 ELECTRIC,
 WATER &
 TELEPHONE
 LINES

FOR BURIED UTILITY INFORMATION
48 HRS BEFORE YOU DIG
 CALL 1-800-922-1987

[illegible]

