

2022/03/07 2:53 PM By: Andrew Hood N:\Projects\102 Widefield Water And San\102 225 Rolling Hills Pump Station Drawings\Working\07-ELECTRICAL\102 225-Electrical.dwg

ABBREVIATIONS		EQUIPMENT GROUND BUS		MEDIUM		STBY STAND-BY	
(D) DEMOLISH	EGC EQUIPMENT GROUNDING CONDUCTOR	MEZ MEZZANINE	STP SHIELDED TWISTED PAIR				
(E) EXISTING	EL SWITCHED EMERGENCY LIGHT	MH MANHOLE	SVD SERVICE DISCONNECT				
(N) NEW	EM EMERGENCY	MHD METAL HALIDE	SW SWITCH				
(RN) REPLACE EXISTING WITH NEW	EMT ELECTRICAL METALLIC TUBING	MIN MINIMUM	SWBD SWITCHBOARD				
(S) SALVAGE	ENT ELECTRICAL NONMETALLIC TUBING	MISC MISCELLANEOUS	SWD SWITCHED				
# NUMBER	EOL END OF LINE	MLO MAIN LUGS ONLY	SWGR SWITCHGEAR				
+C ABOVE COUNTER	EQ EQUIPMENT BRANCH (HEALTHCARE FACILITY)	MRCRT MULTI-RATIO CURRENT TRANSFORMER	SWN SWITCHED NEUTRAL				
+XX DIMENSIONED HEIGHT XX INCHES AFF	ER EMERGENCY RELAY (EM LIGHTING POWER TRANSFER)	MTD MOUNTED	TBB TELECOMMUNICATIONS BONDING BACKBONE CABLE				
A AMPERES	EST ESTIMATED	MTS MANUAL TRANSFER SWITCH	TEBB TELECOMMUNICATIONS BACKBOARD				
AC ALTERNATING CURRENT	FA FIRE ALARM	MV MEDIUM-VOLTAGE	TEL TELEPHONE				
ADA AMERICANS WITH DISABILITY ACT	FAA FIRE ALARM SYSTEM ANNUNCIATOR	N NEUTRAL, NORTH	TGB TELECOMMUNICATIONS GROUNDING BUSBAR				
AF AMP FRAME	FACU FIRE ALARM CONTROL UNIT	NAC NOTIFICATION APPLIANCE CIRCUIT (FIRE ALARM)	TMGB TELECOMMUNICATIONS MAIN GROUNDING BUSBAR				
AFF ABOVE FINISHED FLOOR	FAIC FIRE ALARM INTERFACE CABINET	NC NORMALLY CLOSED	TS TERMINAL STRIP (DIN RAIL, ETC.)				
AFG ABOVE FINISH GRADE	FARA FIRE ALARM REMOTE ANNUNCIATOR	NCA NURSE CALL SYSTEM ANNUNCIATOR	TUP TRIP UNIT POWER SUPPLY				
AIC AMPS INTERRUPTING CAPACITY	FDN FOUNDATION	NCP NURSE CALL SYSTEM CONTROL PANEL	TP TYPICAL				
AL ALUMINUM	FG FINISH GRADE	NEC NATIONAL ELECTRICAL CODE; NFPA 70	UG UNDERGROUND				
AMP AMPERES	FLA FULL LOAD AMPS	NECA NATIONAL ELECTRICAL CONTRACTORS ASSOCIATION	UL UNDERWRITERS' LABORATORIES				
APPX APPROXIMATE	FMC FLEXIBLE METAL CONDUIT	NEMA NATIONAL ELECTRICAL MANUFACTURERS ASSOCIATION	UON UNLESS OTHERWISE NOTED				
ARCH ARCHITECTURAL	FO FIBER OPTIC	NESC NATIONAL ELECTRICAL SAFETY CODE	UPS UNINTERRUPTIBLE POWER SUPPLY				
ASC ABOVE SUSPENDED CEILING	FR FULLY RATED	NFPA NATIONAL FIRE PROTECTION ASSOCIATION	USWD UNSWITCHED CIRCUIT				
AT AMP TRIP	FRC FIBERGLASS RIGID CONDUIT	NIC NOT IN CONTRACT	UTP UNSHIELDED TWISTED PAIR				
ATS AUTOMATIC TRANSFER SWITCH	FTL FEED-THRU LUGS	NL NIGHT LIGHT	V VOLTS				
AUX AUXILIARY	FU FUSE	NO NORMALLY OPEN	VA VOLT AMPERES				
BCU BARE COPPER WIRE	GALV GALVANIZED	NU NURSE CALL	VAR VOLT-AMPS REACTIVE				
BFG BELOW FINISHED GRADE	GC GENERAL CONTRACTOR	OC ON CENTER	VEST VESTIBULE				
BLDG BUILDING	GEC GROUNDING ELECTRODE CONDUCTOR	OD OUTSIDE DIAMETER	VFD VARIABLE FREQUENCY DRIVE				
BPB BRANCH-CIRCUIT PANELBOARD, CB BRANCHES	GFCI GROUND-FAULT CIRCUIT INTERRUPTER (5mA)	OFCI OWNER FURNISHED CONTRACTOR INSTALL	W WATT, WEST or WIRE				
BPF BRANCH-CIRCUIT PANELBOARD, FUSED BRANCHES	GFPE GROUND-FAULT PROTECTION OF EQUIPMENT (30mA)	OFOI OWNER FURNISHED OWNER INSTALL	W/ WITH				
BSEMT BASEMENT	GND GROUND OR GROUNDED	P POLE	W/O WITHOUT				
C CONDUIT	GRC GALVANIZED RIGID STEEL CONDUIT (HOT-DIPPED)	PA PUBLIC ADDRESS	WH WATTHOUR				
C/L CENTERLINE	HBH HEADBOLT HEATER	PAP PUBLIC ADDRESS SYSTEM PANEL	WP WEATHERPROOF				
CAM CAMERA	HDPE HIGH-DENSITY POLYETHYLENE	PC PHOTOELECTRIC CONTROL/SWITCH	XC AUXILIARY CONTACT				
CAT CATEGORY	HH HANDHOLE	PCP PUBLIC ADDRESS SYSTEM CONTROL PANEL	XFER TRANSFER				
CATV CABLE TELEVISION	HID HIGH INTENSITY DISCHARGE (LAMP)	PF POWER FACTOR	XFMR TRANSFORMER				
CB CIRCUIT BREAKER	HPS HIGH PRESSURE SODIUM	PH PHASE	XP EXPLOSION PROOF				
CCTV CLOSED CIRCUIT TELEVISION	HT HEAT TRACE	PNL PANEL(BOARD)	xPyT x POLE y THROW (x and y indicate quantity)				
CFOI CONTRACTOR FURNISH OWNER INSTALL	HV HIGH VOLTAGE	PR PAIR	NOT ALL ABBREVIATIONS ARE USED				
CIRC CIRCUITING	IBC INTERNATIONAL BUILDING CODE	PRI PRIMARY					
CKT CIRCUIT	IBT INTERSYSTEM BONDING TERMINATION	PS PRESSURE SWITCH					
CL CLASS	ID INSIDE DIAMETER	PT POTENTIAL TRANSFORMER					
CLG CEILING	IDC INITIATING DEVICE CIRCUIT	PVC POLYVINYL CHLORIDE CONDUIT					
CNDR CONDUCTOR	IES ILLUMINATING ENGINEERING SOCIETY	RCPT RECEPTACLE					
CO CARBON MONOXIDE	IFC INTERNATIONAL FIRE CODE	RDHT ROOF DRAIN HEAT TRACE					
COAX COAXIAL CABLE	IG ISOLATED GROUND	REQD REQUIRED					
COL COLUMN	IGB ISOLATED GROUND BUS	REV REVISION, REVERSE					
CR CRITICAL BRANCH (HEALTHCARE FACILITY)	IGC ISOLATED GROUND CONDUCTOR	RLHT RAIN LEADER HEAT TACE					
CT CURRENT TRANSFORMER	IMC INTERMEDIATE METALLIC CONDUIT	RM ROOM					
CTRL CONTROL	INCND INCANDESCENT	RMC RIGID METAL CONDUIT (HOT-DIPPED GALVANIZED)					
CU COPPER	JB JUNCTION BOX	RMS ROOT MEAN SQUARED					
DC DIRECT CURRENT	JCN JACKETED CONCENTRIC NEUTRAL (CABLE)	ROW RIGHT OF WAY					
DEGC DEGREES CELSIUS	KO KNOCKOUT	RRHT RAIN LEADER RELIEF HEAT TRACE					
DEGF DEGREES FAHRENHEIT	KVA KILOVOLT AMPERES	S SOUTH					
DG DIESEL GENERATOR	L LINE	SCCR SHORT CIRCUIT CURRENT RATING					
DIA DIAMETER	LC LIGHTING CONTACTOR	SCP SECURITY SYSTEM CONTROL PANEL					
DIM DIMENSION	LED LIGHT EMITTING DIODE	SD FIRE/SMOKE DAMPER					
DISC DISCONNECT	LFMC LIQUIDTIGHT FLEXIBLE METAL CONDUIT	SEC SECONDARY					
DIST DISTRIBUTION	LFNC LIQUIDTIGHT FLEXIBLE NONMETALLIC CONDUIT	SEP SECURITY SYSTEM PANEL					
DIV DIVERSITY	LS LIFE-SAFETY BRANCH (HEALTHCARE FACILITY)	SFB SUB-FEED CB					
DIV DIVISION	LSW LIMIT SWITCH	SFL SUB-FEED DOUBLE LUGS					
DP DISTRIBUTION PANELBOARD	LTG LIGHTING	SHT SHEET (REFER TO DRAWING)					
DPB DISTRIBUTION PANELBOARD, CB BRANCHES	LV LOW VOLTAGE	SLC SIGNALING LINE CIRCUIT (FA INITIATING)					
DPDT DOUBLE POLE DOUBLE THROW	MAN MANUAL	SN SOLID NEUTRAL					
DPF DISTRIBUTION PANELBOARD, FUSED BRANCHES	MAX MAXIMUM	SPD SURGE PROTECTION DEVICE					
DR AUTOMATIC DOOR OPERATOR	MC METAL-CLAD	SPDT SINGLE POLE DOUBLE THROW					
DWG DRAWING	MCB MAIN CIRCUIT BREAKER	SPEC SPECIFICATION					
E EAST	MCC MOTOR CONTROL CENTER	SPST SINGLE POLE SINGLE THROW					
EBJ EQUIPMENT BONDING JUMPER	MCP MOTOR CIRCUIT PROTECTOR	SR SERIES RATED					
ECN EXTRA CAPACITY NEUT (200%)	MDH MAGNETIC DOOR HOLDERS	SS STAINLESS STEEL, SOFT-START					
EF ELECTRONIC FLUSH/FAUCET	MECH MECHANICAL	SSBJ SUPPLY-SIDE BONDING JUMPER					

SYMBOLS	
	LED LUMINAIRE, 1'X4', UON
	LED STRIP FIXTURE, INDUSTRIAL, 4', UON.
	EXTERIOR BUILDING LIGHT, WALL MTD.
	WALL MOUNTED EXIT FIXTURE, ARROW AS INDICATED, TYPE E
	CEILING MOUNTED EXIT FIXTURE, TYPE E
	WALL MOUNTED, BATTERY OPERATED EMERGENCY FIXTURE, TYPE EM
	EMERGENCY EGRESS LIGHT
	POLE MOUNTED FIXTURE
	OCCUPANCY SENSOR, TYPE A COVERAGE; OSB, OSC, OSD FOR B, C, D
	OCCUPANCY SENSOR WALL SWITCH
	S SINGLE POLE SWITCH
	S2 DOUBLE POLE SWITCH
	S3 THREEWAY SWITCH
	S4 4 - WAY SWITCH
	Sg SWITCH FOR FIXTURES MARKED "g"
	Sd DIMMER SWITCH
	Sc GLOW IN OFF POSITION SWITCH
	Sk KEYED SWITCH
	Sp PILOT LIGHT SWITCH
	Sm MOTOR-STARTING SWITCH, WITHOUT OVERLOAD PROTECTION
	Smxx MOTOR-STARTING SWITCH (for misc designation; HT, DDC, etc)
	Sxx SWITCH (for misc designation; S3a, S3b, etc)
	SB PUSHBUTTON SWITCH
	ES STOP SWITCH
	SR SINGLE RECEPTACLE
	DR DUPLEX RECEPTACLE
	DDR DOUBLE DUPLEX RECEPTACLE
	GFCI GROUND-FAULT CIRCUIT INTERRUPTER (GFCI) DUPLEX RECEPTACLE
	GFCI DOUBLE DUPLEX RECEPTACLE (TWO EACH GFCI RECEPTACLES)
	DRG DUPLEX RECEPTACLE W/ ISOLATED GROUND
	SRG SWITCHED RECEPTACLE
	SPR SPECIAL PURPOSE RECEPTACLE; Nemo Type As Shown
	JB JUNCTION BOX
	M MOTOR
	MC MANUAL CONTROLLER, WITH OVERLOAD PROTECTION
	MS MAGNETIC MOTOR STARTER OR VFD AS NOTED
	MSD COMBINATION MAGNETIC MOTOR STARTER AND DISCONNECT
	DS DISCONNECT SWITCH NON-FUSED
	DSF DISCONNECT SWITCH FUSED
	ECB ENCLOSED CIRCUIT BREAKER
	MC MAGNETIC CONTACTOR
	MS METER SOCKET
	PB PANELBOARD
	MP MISC PANEL
	BRANCH CIRCUIT HOME RUN TO PANELBOARD; NO. OF ARROWS INDICATES NUMBER OF CIRCUITS, PANEL AND CIRCUIT NUMBERS AS SHOWN
	NUMBER OF CONDUCTORS IN RACEWAY; ABSENCE OF MARKS INDICATES TWO CONDUCTORS AND EQUIPMENT GROUNDING CONDUCTOR, EGC IN ALL RACEWAYS. EQUIPMENT GROUNDING CONDUCTOR INDICATED.
	T THERMOSTAT
	TO TELECOMMUNICATIONS OUTLET [TELEPHONE OUTLET]
	TOF TELECOMMUNICATIONS OUTLET FLOOR BOX [TELEPHONE OUTLET]
	TOU TELECOMMUNICATIONS OUTLET
	TOU TELECOM. OUTLET (see Telecommunication Faceplate Schedule)
	COU COMPUTER OUTLET (NUMBER OF JACKS INDICATED, TYPE RJ-45)
	2 TELEPHONE & 2 COMPUTER JACKS, TYPE RJ-45
	GE GROUNDING ELECTRODE CONNECTION
	HWC HARD-WIRED EQUIPMENT CONNECTION
NOT ALL SYMBOLS ARE USED	

BRANCH CIRCUIT CONDUCTOR SCHEDULE									
C.B. OR FUSE (AMPS)	MAX. LOAD (AMPS)	VOLTS / AWG / MAXIMUM ONE-WAY CIRCUIT LENGTH (FT.)							
		120 VOLTS				277 VOLTS			
		#12	#10	#8	#6	#12	#10	#8	#6
20	16	66	102	161	250	153	236	371	-
25	20	-	82	129	200	-	189	297	-
30	24	-	68	107	167	-	157	247	385
35	28	-	-	92	143	-	-	212	330
40	32	-	-	80	125	-	-	185	289
45	36	-	-	71	111	-	-	165	256
50	40	-	-	64	100	-	-	148	231
60	48	-	-	-	83	-	-	-	192

LUMINAIRE SCHEDULE									
TYPE	DESCRIPTION	LAMP	MANUF.	MOUNT.	CAT. NO.	VA	LUM.	COLOR (K)	
A	ONE-PIECE FIBERGLASS HOUSING, HIGH IMPACT RESISTANT, UV STABILIZED, CLEAR POLYCARBONATE DIFFUSER W/ CLOSED CELL GASKET, MEDIUM DISTRIBUTION, 10 KV SURGE SUPPRESSOR, WET LOCATION END FITTINGS, SUITABLE FOR HOSE DOWN. DIMMABLE DRIVER IS FACTORY PROVIDED BUT NOT REQUIRED FOR THIS APPLICATION. 120 V.	LED	LITHONIA	SURFACE CEILING	FHE L24 9000LM PCL MD MVOLT GZ10 50K 80 CRI SPD WLFEND2	59	9623	5000	
B	WALL PACK, FULL CUTOFF OPTICS, CAST ALUMINUM, WEATHER SEALED HOUSING, PROTECTIVE GLASS LENS W/ GASKET, INTEGRAL SURGE PROTECTION, 120 V.	LED	COOPER	OUTDOOR SURFACE WALL	XTOR1B-W	12	1396	4000	
EG	EMERGENCY EGRESS LIGHT, SINGLE LAMP HEAD, DIE-CAST LAMP HEAD HOUSING, W/ SELF-CONTAINED BATTERY, UL WET LOCATION LISTED, DARK BRONZE, 120 V.	LED	LITHONIA	OUTDOOR SURFACE WALL	ELMRW LP220L DDBTXD SGL ELM2LLTP	1	110	N/A	
EM	EMERGENCY LIGHT W/ SELF-CONTAINED NI-CAD BATTERY & CHARGER, NEMA 4X, STAINLESS STEEL HARDWARE & FASTENERS, 15 W TWIN, ADJUSTABLE AIM, LAMP HEADS, MIN. 90 MIN. SERVICE ON SINGLE BATTERY CHARGE, ADVANCED DIAGNOSTICS, 120 V.	LED	EMERGI-LITE	SURFACE WALL	12HPN402L15D	30	NA	N/A	
EX	ILLUMINATED EXIT SIGN W/ FULLY GASKETED, HIGH IMPACT RESITANT, POLYCARBONATE FACEPLATE AND ALUMINUM HOUSING. 6-INCH HIGH, RED CHARACTERS, WATER PROOF, SELF-CONTAINED BATTERY BACKUP, 120 V	LED	EMERGI-LITE	SURFACE WALL OR CEILING	GG SVXNHZ 1 R D	2	N/A	N/A	

IDS-HYDRO CONSULTANTS, INC.
 5540 TECH CENTER DR., SUITE 100
 COLORADO SPRINGS, COLORADO 80919
 (719) 227-0072
 THE CONTRACTOR SHALL VERIFY ALL DIMENSIONS. ANY ERRORS OR OMISSIONS SHALL BE REPORTED TO IDS-HYDRO CONSULTANTS, INC. IDS-HYDRO ASSUMES NO LIABILITY FOR UNAUTHORIZED CHANGES AND/OR REVISIONS MADE TO PLANS.

WIDEFIELD WATER AND SANITATION DISTRICT
 ROLLING HILLS BOOSTER PUMP STATION
 ELECTRICAL ABBREVIATIONS, LEGEND, AND SCHEDULES

NO.	DESCRIPTION	BY	APP.	DATE
1				
2				
3				
4				
5				
6				
7				

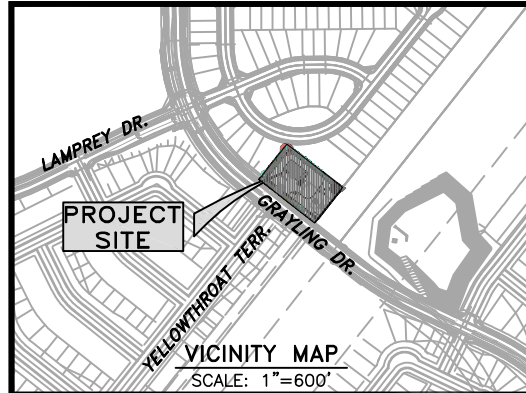
FOR BID

Project No: 102.125
 Date: 03/07/22
 Design: RDP
 Drawn: ACH
 Check: GJD

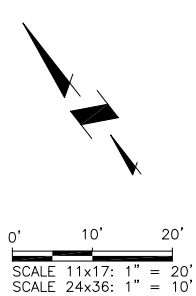
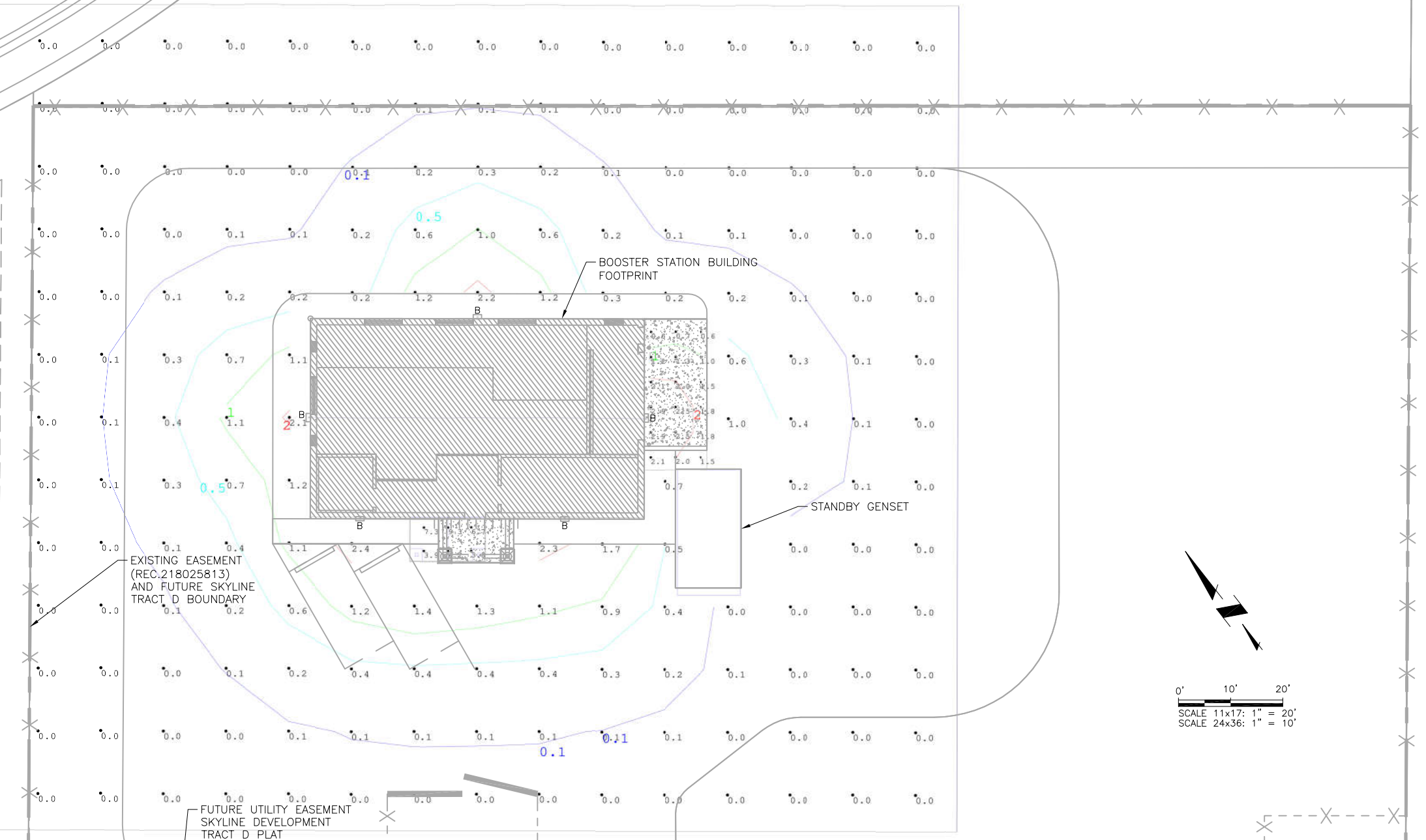
E1

SHEET ---- OF

2022/03/07 2:54 PM By: Andrew Hood N:\Projects\102 Widefield Water And San\102.125 Rolling Hills Pump Station Drawings\Working\02-Civil\102.125_Civil.dwg



LUMINAIRE SCHEDULE								
TYPE	DESCRIPTION	LAMP	MANUF.	MOUNT.	CAT. NO.	VA	LUM.	COLOR (K)
B	WALL PACK, FULL CUTOFF OPTICS, CAST ALUMINUM HOUSING, WEATHER SEALED HOUSING, PROTECTIVE GLASS LENS W/ GASKET, INTEGRAL SURGE PROTECTION, 120 V.	LED	COOPER	OUTDOOR SURFACE WALL 14.5FT AFG (UON)	XTOR1B-W	12	1396	4000



Portico Floor
 Illuminance (Fc)
 Average = 6.20
 Maximum = 9.3
 Minimum = 3.8
 Avg/Min Ratio =
 Max/Min Ratio =

Loading Ramp
 Illuminance (Fc)
 Average = 1.72
 Maximum = 2.9
 Minimum = 0.6
 Avg/Min Ratio =
 Max/Min Ratio =

Gravel Area
 Illuminance (Fc)
 Average = 0.24
 Maximum = 2.4
 Minimum = 0.0
 Avg/Min Ratio =
 Max/Min Ratio =

PROPERTY ADDRESS:
 11208 GRAYLING DRIVE, COLORADO SPRINGS, CO

OWNER/APPLICANT NAME:
 WIDEFIELD WATER AND SANITATION DISTRICT
 ROB BANNISTER P.E., DISTRICT ENGINEER
 PH# (719)955-6118
 EMAIL: ROB@WWSDONLINE.COM

PLAN PREPARER:
 ROBERT D. POSMA, PE, ELECTRICAL ENGINEER
 PH# (907) 743-3248
 EMAIL: ROBERT.POSMA@RESPEC.COM

GRAYLING DRIVE
 (60' R.O.W.), MINOR RES.
 COLLECTOR, PUBLIC

JDS-HYDRO CONSULTANTS, INC.
 5540 TECH CENTER DR., SUITE 100
 COLORADO SPRINGS, COLORADO 80919
 (719) 227-0072

DISCLAIMER: THE CONTRACTOR SHALL VERIFY ALL DIMENSIONS. ANY ERRORS OR OMISSIONS SHALL BE REPORTED TO JDS-HYDRO CONSULTANTS, INC. JDS-HYDRO ASSUMES NO LIABILITY FOR UNAUTHORIZED CHANGES AND/OR REVISIONS MADE TO PLANS.

WIDEFIELD WATER AND SANITATION DISTRICT
 ROLLING HILLS BOOSTER PUMP STATION
 ELECTRICAL LUMINAIRE PLAN

NO.	DESCRIPTION	BY	APP.	DATE
1				
2				
3				
4				
5				
6				
7				

FOR BID



Project No: 102.125
 Date: 03/07/22
 Design: RDP
 Drawn: ACH
 Check: GJD

2022/03/08 9:29 AM By: Andrew Hood N:\Projects\102 Widefield Water And San\102.125 Rolling Hills Pump Station Drawings\04-Architectural\102.125_Architectural.dwg

JDS-HYDRO CONSULTANTS, INC.
 5540 TECH CENTER DR., SUITE 100
 COLORADO SPRINGS, COLORADO 80919
 (719) 227-0072
DISCLAIMER: THE CONTRACTOR SHALL VERIFY ALL DIMENSIONS. ANY ERRORS OR OMISSIONS SHALL BE REPORTED TO JDS-HYDRO CONSULTANTS, INC. JDS-HYDRO ASSUMES NO LIABILITY FOR UNAUTHORIZED CHANGES AND/OR REVISIONS MADE TO PLANS.

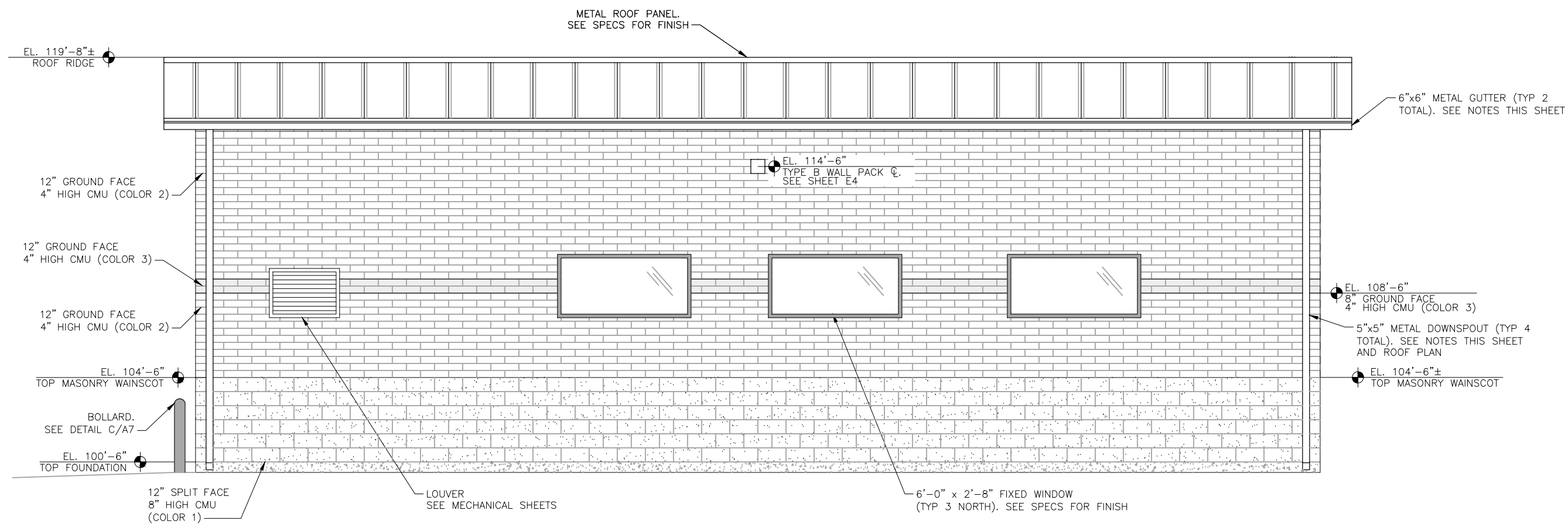
WIDEFIELD WATER AND SANITATION DISTRICT
 ROLLING HILLS BOOSTER PUMP STATION
 ARCHITECTURAL
 NORTH AND WEST ELEVATIONS

NO.	DESCRIPTION	BY	APP.	DATE
1				
2				
3				
4				
5				
6				
7				

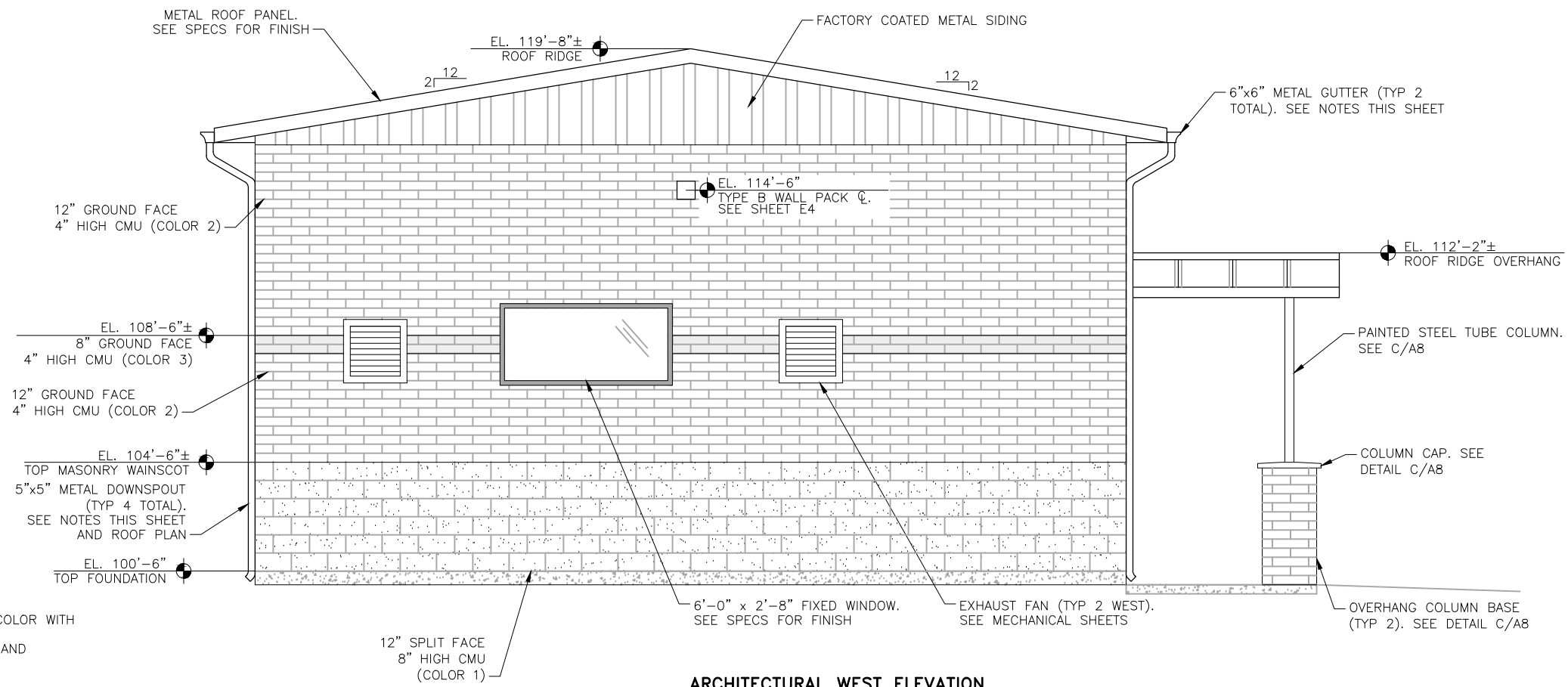
FOR REVIEW

Project No.: 102.125
 Date: 03/08/22
 Design: GGM
 Drawn: ACH
 Check: GJD

A3
SHEET --- OF ---



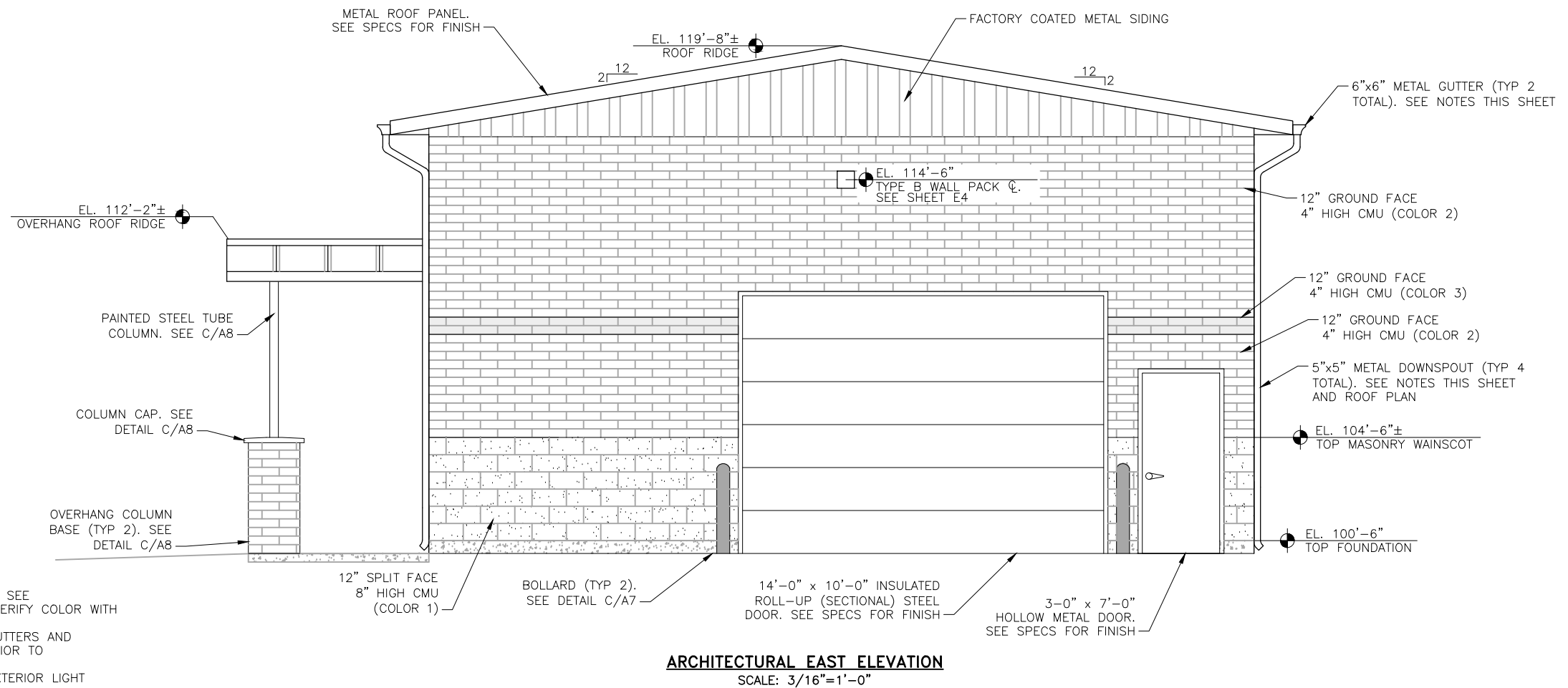
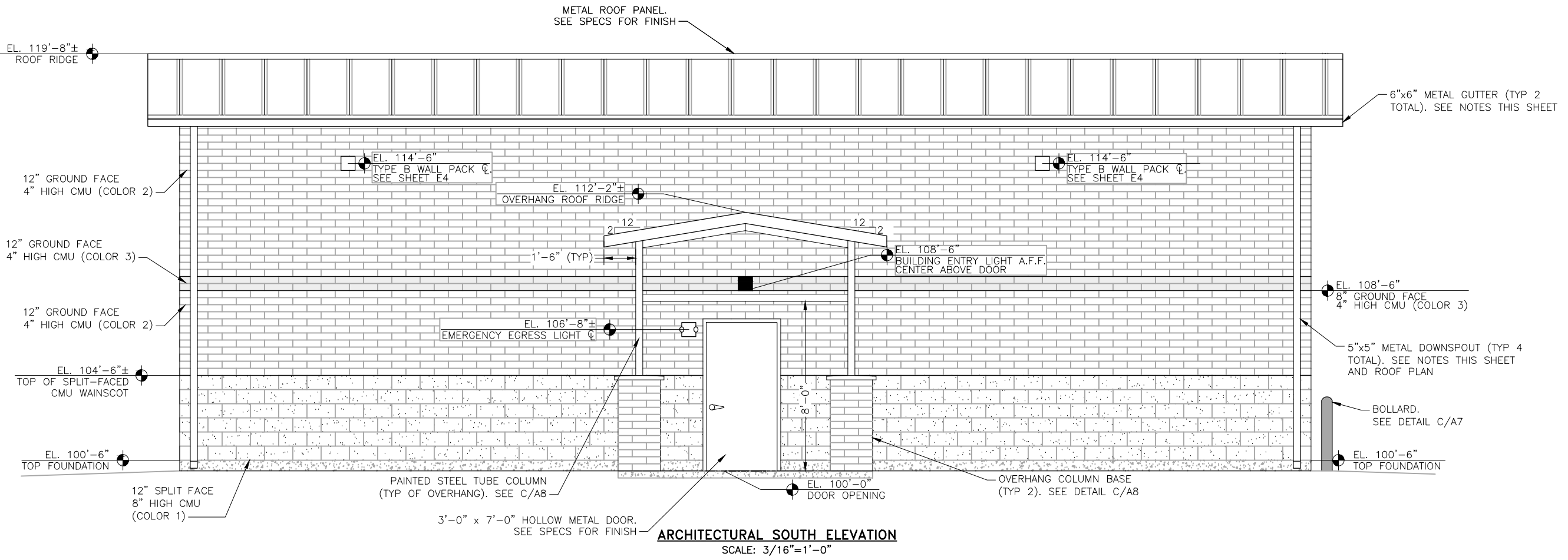
ARCHITECTURAL NORTH ELEVATION
SCALE: 3/16"=1'-0"



ARCHITECTURAL WEST ELEVATION
SCALE: 3/16"=1'-0"

- NOTES:**
- OWNER TO SELECT ALL COLORS. SEE SPECIFICATIONS FOR FINISHES. VERIFY COLOR WITH OWNER PRIOR TO FABRICATION.
 - SUBMIT SHOP DRAWINGS FOR GUTTERS AND DOWNSPOUTS FOR APPROVAL PRIOR TO FABRICATION.
 - SEE ELECTRICAL SHEETS FOR EXTERIOR LIGHT FIXTURE LOCATIONS.
 - CONTRACTOR TO INSTALL RIDGE VENT ACROSS ENTIRE ROOF RIDGE.
 - FINISHED FLOOR ELEVATION VARIES. SEE SHEET A1.

2022/03/08 9:29 AM By: Andrew Hood N:\Projects\102 Widefield Water And San\102.125 Rolling Hills Pump Station Drawings\04-Architectural\102.125_Architectural.dwg



- NOTES:**
- OWNER TO SELECT ALL COLORS. SEE SPECIFICATIONS FOR FINISHES. VERIFY COLOR WITH OWNER PRIOR TO FABRICATION.
 - SUBMIT SHOP DRAWINGS FOR GUTTERS AND DOWNSPOUTS FOR APPROVAL PRIOR TO FABRICATION.
 - SEE ELECTRICAL SHEETS FOR EXTERIOR LIGHT FIXTURE LOCATIONS.
 - CONTRACTOR TO INSTALL RIDGE VENT ACROSS ENTIRE ROOF RIDGE.
 - FINISHED FLOOR ELEVATION VARIES. SEE SHEET A1.

JDS-HYDRO CONSULTANTS, INC.
 5540 TECH CENTER DR., SUITE 100
 COLORADO SPRINGS, COLORADO 80919
 (719) 227-0072
DISCLAIMER: THE CONTRACTOR SHALL VERIFY ALL DIMENSIONS. ANY ERRORS OR OMISSIONS SHALL BE REPORTED TO JDS-HYDRO CONSULTANTS, INC. JDS-HYDRO ASSUMES NO LIABILITY FOR UNAUTHORIZED CHANGES AND/OR REVISIONS MADE TO PLANS.

WIDEFIELD WATER AND SANITATION DISTRICT
 ROLLING HILLS BOOSTER PUMP STATION
 ARCHITECTURAL
 SOUTH AND EAST ELEVATIONS

NO.	DESCRIPTION	BY	APP.	DATE
1				
2				
3				
4				
5				
6				
7				

FOR REVIEW

Project No.: 102.125
 Date: 03/08/22
 Design: GGM
 Drawn: ACH
 Check: GJD