



New Trees Proposed

Trees To Be Not Placed

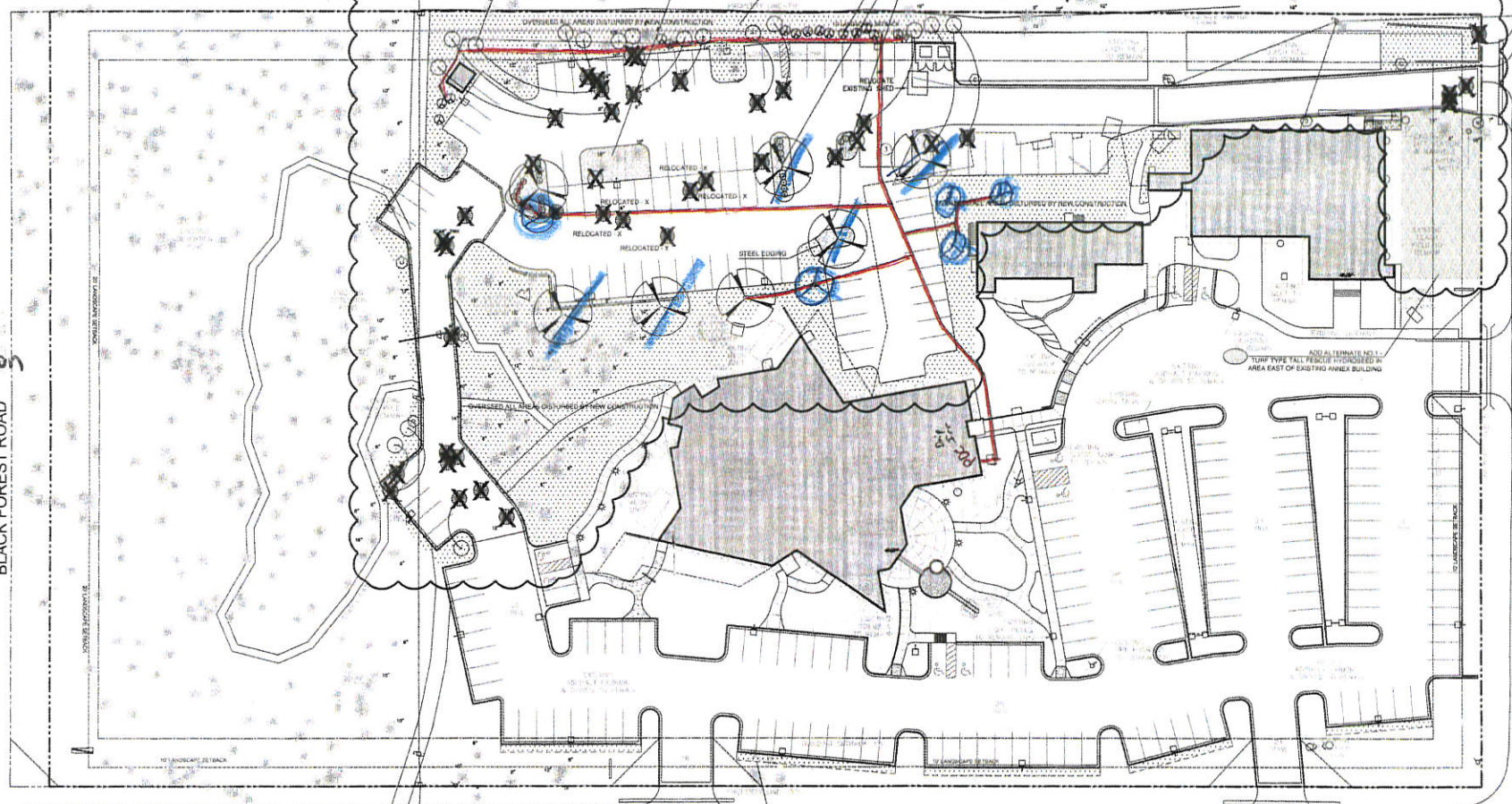
Irrigation Lines

REMOVE TWINE FROM BRANCHES ON TREES TIED UP FOR SHIPPING. SPRAY WITH WET-FURFUR OR BLEACH. IF TWINE CUT THROUGH FLARE MUST BE VISIBLE AT TOP OF TRUNK. REMOVE TWINE FROM FLARE AT GRADE. BRANCHES TO BE REMOVED TO BE PLANTED WITHIN 12-18 MONTHS OF PLANTING.

DEPTH OF SPREAD MULCH PROVIDE A 7" DEPTH OF WOOD MULCH OVER AREA OF PLANTING. MULCH FOR TREES TO BE PLANTED WITHIN 12-18 MONTHS OF PLANTING. MULCH IS TO BE BROKE DOWN AFTER ESTABLISHMENT. PROVIDE MULCH ON DOWNHILL SIDE OF SLOPES. KEEP MULCH AWAY FROM CONTACT WITH TRUNKS. DO NOT PLACE FABRIC LINERS UNDER MULCH FOR TREES PLANTED IN TIGHT SPACES.

SOFTEN SIDES OF PLANTING PIT BACKFILL WITH LEAVES OR SOFT MULCH. PLACE MULCH ON FIRM UNDISTURBED SOIL.

AFTER TREE IS POSITIONED, REMOVE ALL TWINE. REMOVE PLASTIC WIRE BULBAP AND RUBBER.



DETAIL

PLANT SCHEDULE:

PLANT	QUANTITY	SIZE	PLANTING	NOTES
45A	10-40'	40-50'	2-03'	B&B Nursery Growth Size
45B	10-40'	40-50'	2-03'	B&B Nursery Growth Size
45C	10-40'	40-50'	2-03'	B&B Nursery Growth Size
45D	10-40'	40-50'	2-03'	B&B Nursery Growth Size
45E	10-40'	40-50'	2-03'	B&B Nursery Growth Size
45F	10-40'	40-50'	2-03'	B&B Nursery Growth Size
45G	10-40'	40-50'	2-03'	B&B Nursery Growth Size
45H	10-40'	40-50'	2-03'	B&B Nursery Growth Size
45I	10-40'	40-50'	2-03'	B&B Nursery Growth Size
45J	10-40'	40-50'	2-03'	B&B Nursery Growth Size
45K	10-40'	40-50'	2-03'	B&B Nursery Growth Size
45L	10-40'	40-50'	2-03'	B&B Nursery Growth Size
45M	10-40'	40-50'	2-03'	B&B Nursery Growth Size
45N	10-40'	40-50'	2-03'	B&B Nursery Growth Size
45O	10-40'	40-50'	2-03'	B&B Nursery Growth Size
45P	10-40'	40-50'	2-03'	B&B Nursery Growth Size
45Q	10-40'	40-50'	2-03'	B&B Nursery Growth Size
45R	10-40'	40-50'	2-03'	B&B Nursery Growth Size
45S	10-40'	40-50'	2-03'	B&B Nursery Growth Size
45T	10-40'	40-50'	2-03'	B&B Nursery Growth Size
45U	10-40'	40-50'	2-03'	B&B Nursery Growth Size
45V	10-40'	40-50'	2-03'	B&B Nursery Growth Size
45W	10-40'	40-50'	2-03'	B&B Nursery Growth Size
45X	10-40'	40-50'	2-03'	B&B Nursery Growth Size
45Y	10-40'	40-50'	2-03'	B&B Nursery Growth Size
45Z	10-40'	40-50'	2-03'	B&B Nursery Growth Size

SITE CATEGORY CALCULATION FORMATS

Street Name	Street Classification	Width (ft)	Clearance	Tree Part
Zone Boundary	Zone Boundary	10'	10'	10'
Black Forest Road	Major Arterial	30'	40'	1.25'
Teachout Rd	Collector	10'	10'	1.25'
McFerran Rd	Collector	10'	10'	1.25'
Zone of Trees	Street	10'	10'	1.25'
20' of Trees	Street	10'	10'	1.25'
10' of Trees	Street	10'	10'	1.25'
5' of Trees	Street	10'	10'	1.25'
2' of Trees	Street	10'	10'	1.25'
1' of Trees	Street	10'	10'	1.25'

NOTES:

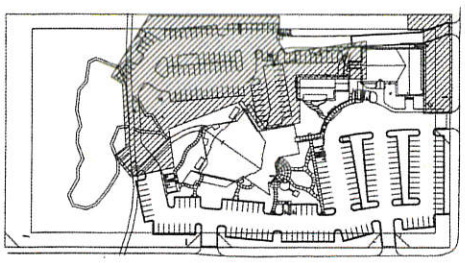
- AT TIME OF PLANTING, DO NOT REMOVE OR CUT LEADER AND PRUNE ONE-YEAR OR BROKEN BRANCHES. CROSS OVER BRANCHES AND WEAR OF BRANCH COULDS. SOME WEAR BRANCHES AND BRANCHES MAY BE PRUNED. HOWEVER, DO NOT REMOVE THE TERMINAL SIZE OF BRANCHES THAT EXTEND TO THE EDGE OF THE CURB.
- STRUCTURAL PRUNING SHOULD BE DONE AFTER ESTABLISHMENT PERIOD USUALLY 2-3 GROWING SEASONS.
- KEEP PLANTS MOIST AND SHADED UNTIL PLANTING.
- DO NOT FERTILIZE FOR AT LEAST ONE GROWING SEASON.
- AMENDED BACKFILL SHALL BE 1/3 COMPOST (PREFERABLY CLASSIFIED) AND 2/3 NATIVE SANDOR AMENDED TOPSOIL.
- WATER PLANTS ON EXPOSED LAND SURFACES WITH THIS MIX. USE ELECTRICAL OR GAUGE TAPE NOT TWINE.
- DEEP WATER ALL PLANTS AT TIME OF PLANTING.

GENERAL NOTES:

- OWNER AND ARCHITECT/ARCHITECT SHALL PLACE COMPONENTS NOT POSSIBLE AS INDICATED.
- OWNER SHALL PROVIDE LANDSCAPE ARCHITECT WITH ALL NECESSARY INFORMATION PRIOR TO THE START OF THE PROJECT.
- OWNER SHALL PROVIDE FOR REFERENCE ONLY. VERIFY ALL COMPONENTS PRIOR TO SUBMITTING COST PROPOSAL. IN THE EVENT OF A CONFLICT BETWEEN SCHEDULED MATERIALS OR APPROVED COMPONENTS, THOSE QUANTITIES WHICH HAVE BEEN SCHEDULED SHALL BE USED UNLESS OTHERWISE SPECIFIED IN ANY CASE.
- THE CONTRACTOR IS RESPONSIBLE FOR INSPECTION AND VERIFICATION OF ALL FIELD CONDITIONS AND RESOLVING CONFLICTS WITH MATERIALS TO CONSTRUCTION, ETC., WHICH MAY AFFECT THE LANDSCAPE INSTALLATION. ALL WORK SHALL BE CONTROLLED AS ACCEPTANCE OF CONDITIONS.
- THE PROJECT LANDSCAPE ARCHITECT RESERVES THE RIGHT TO CONSIDER AND APPROVE ALL MATERIALS AND METHODS AT ANY TIME WHICH THE LANDSCAPE ARCHITECT OF OPINION MANAGES THE CONSTRUCTION. RESIST AND MANTAIN DESIGN INTENT.
- ALL TREES TO BE PLANTED SHALL BE 100% NATIVE AND SHALL BE 100% NATIVE AND SHALL BE 100% NATIVE.
- THERE SHALL BE A 3 FOOT CLEAR SPACE MAINTAINED AROUND THE CIRCUMFERENCE AROUND ALL FIRE HYDRANTS.
- SPRINKLER CONTROL SHALL BE APPLIED TO ALL NEEDLE LEAF OR LOOSE NEEDLE PLANTS ON DRAINAGE.
- CONTRACTOR TO USE BIODEGRADABLE TOPICAL FERTILIZER AS AVAILABLE. IF THE AMOUNT OF FERTILIZER NEEDED TO COMPLETE FERTILIZER IS NOT AVAILABLE, THE CONTRACTOR SHALL REPORT THE AMOUNT OF SOIL NEEDED TO FERTILIZE TO THE TOP OF EACH TREE.
- ALL LANDSCAPE AND PLANTING MATERIALS SHALL BE OBTAINED BY THE OWNER UPON COMPLETION OF LANDSCAPE INSTALLATIONS.

TREE TRANSPLANT NOTES:

- ALL EXISTING PORTLANDIA TREE TO BE RELOCATED ARE TO BE TRANSPLANTED USING APPROPRIATE SIZE TREE SPADE.
- THE CONTRACTOR SHALL ENSURE THE PROTECTION AND HEALTH OF ALL TRANSPLANTED TREES DURING CONSTRUCTION. TRANSPLANTED TREES SHALL BE WATERED TO MAINTAIN ADEQUATE SOIL MOISTURE AND SET IN AN APPROPRIATELY SIZED CONTAINER OR REPLANTED AS NECESSARY.



ADDENDUM NO. 2 NOTE:
 RE-SEEDING/OVERSEEDING OF DISTURBED AREAS BY GENERAL CONTRACTOR, ALL OTHER PLANTINGS BY OWNER

William Gaman & Associates, Ltd.
 Landscape Architects
 731 North Weber Street, Suite 10
 Colorado Springs, CO 80903
 715.633.9700
 Email: info@gaman.net

TAYLOR ARCHITECTURE & DESIGN, LLC

OUR LADY OF THE PINES



CONSTRUCTION DOCUMENTS

DATE: JANUARY

PROJECT: T

SHEET: L

FILE NO.: PPR-15-037