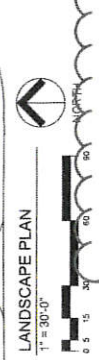
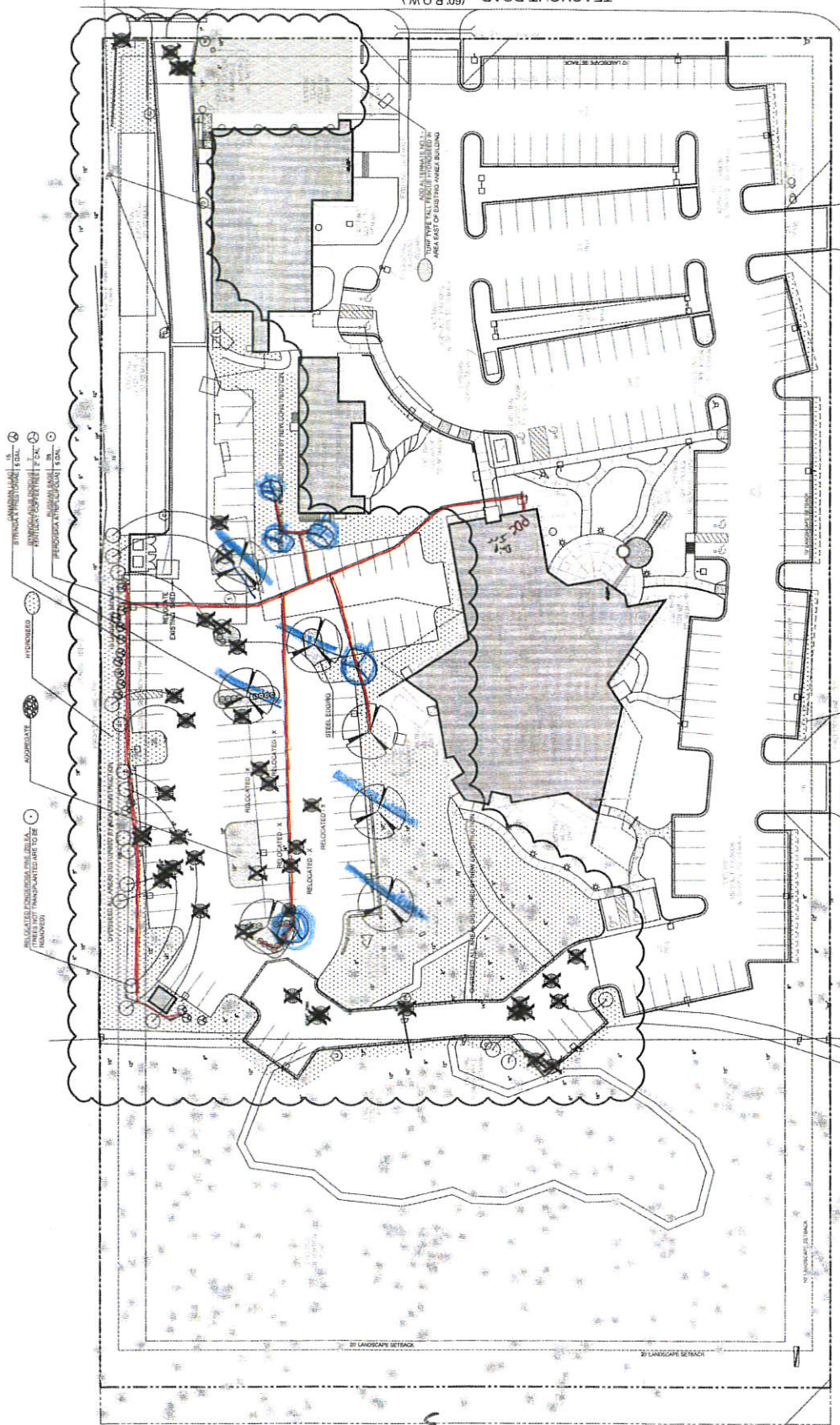


New Trees Proposed

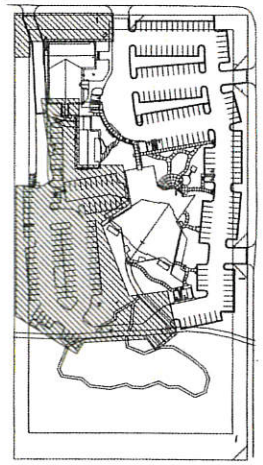
Trees To Be Not Placed

Irrigation Lines



ADDITIONAL NOTE:
 RE-SEEDING/OVERSEEDING OF DISTURBED AREAS BY GENERAL CONTRACTOR.
 ALL OTHER PLANTINGS BY OWNER

William Garza
 A. ARCHITECTURE, L.L.C.
 775 North Weber Street, Suite 10
 Colorado Springs, CO 80903
 719.333.7700
 Email: Will@willgarza.net
 Website: www.willgarza.net



NOTES:

- AT TIME OF PLANTING, THE CONTRACTOR SHALL VERIFY THE QUALITY OF THE SOIL AND THE HEALTH OF THE EXISTING TREES. THE CONTRACTOR SHALL BE RESPONSIBLE FOR THE PROTECTION OF ALL EXISTING TREES AND LANDSCAPE ELEMENTS.
- ALL EXISTING TREES TO BE REMOVED SHALL BE IDENTIFIED AND MARKED WITH A RED 'X' PRIOR TO CONSTRUCTION.
- THE CONTRACTOR SHALL MAINTAIN A RECORD OF ALL TREE REMOVALS AND RELOCATION WORK.
- ALL RELOCATION WORK SHALL BE COMPLETED PRIOR TO THE START OF CONSTRUCTION.
- THE CONTRACTOR SHALL MAINTAIN ACCESS TO ALL UTILITIES AND SERVICES AT ALL TIMES.
- ALL PLANTINGS SHALL BE DONE IN ACCORDANCE WITH THE LANDSCAPE ARCHITECT'S SPECIFICATIONS.
- THE CONTRACTOR SHALL BE RESPONSIBLE FOR THE PROTECTION OF ALL EXISTING TREES AND LANDSCAPE ELEMENTS.
- ALL PLANTINGS SHALL BE DONE IN ACCORDANCE WITH THE LANDSCAPE ARCHITECT'S SPECIFICATIONS.
- THE CONTRACTOR SHALL MAINTAIN ACCESS TO ALL UTILITIES AND SERVICES AT ALL TIMES.
- ALL PLANTINGS SHALL BE DONE IN ACCORDANCE WITH THE LANDSCAPE ARCHITECT'S SPECIFICATIONS.

GENERAL NOTES:

- THE CONTRACTOR SHALL BE RESPONSIBLE FOR THE PROTECTION OF ALL EXISTING TREES AND LANDSCAPE ELEMENTS.
- ALL PLANTINGS SHALL BE DONE IN ACCORDANCE WITH THE LANDSCAPE ARCHITECT'S SPECIFICATIONS.
- THE CONTRACTOR SHALL MAINTAIN ACCESS TO ALL UTILITIES AND SERVICES AT ALL TIMES.
- ALL PLANTINGS SHALL BE DONE IN ACCORDANCE WITH THE LANDSCAPE ARCHITECT'S SPECIFICATIONS.
- THE CONTRACTOR SHALL BE RESPONSIBLE FOR THE PROTECTION OF ALL EXISTING TREES AND LANDSCAPE ELEMENTS.
- ALL PLANTINGS SHALL BE DONE IN ACCORDANCE WITH THE LANDSCAPE ARCHITECT'S SPECIFICATIONS.
- THE CONTRACTOR SHALL MAINTAIN ACCESS TO ALL UTILITIES AND SERVICES AT ALL TIMES.
- ALL PLANTINGS SHALL BE DONE IN ACCORDANCE WITH THE LANDSCAPE ARCHITECT'S SPECIFICATIONS.
- THE CONTRACTOR SHALL BE RESPONSIBLE FOR THE PROTECTION OF ALL EXISTING TREES AND LANDSCAPE ELEMENTS.
- ALL PLANTINGS SHALL BE DONE IN ACCORDANCE WITH THE LANDSCAPE ARCHITECT'S SPECIFICATIONS.

TREE TRANSPLANT NOTES:

- ALL TREE TRANSPLANTS SHALL BE IDENTIFIED AND MARKED WITH A RED 'X' PRIOR TO CONSTRUCTION.
- THE CONTRACTOR SHALL MAINTAIN ACCESS TO ALL UTILITIES AND SERVICES AT ALL TIMES.
- ALL PLANTINGS SHALL BE DONE IN ACCORDANCE WITH THE LANDSCAPE ARCHITECT'S SPECIFICATIONS.
- THE CONTRACTOR SHALL BE RESPONSIBLE FOR THE PROTECTION OF ALL EXISTING TREES AND LANDSCAPE ELEMENTS.
- ALL PLANTINGS SHALL BE DONE IN ACCORDANCE WITH THE LANDSCAPE ARCHITECT'S SPECIFICATIONS.
- THE CONTRACTOR SHALL MAINTAIN ACCESS TO ALL UTILITIES AND SERVICES AT ALL TIMES.
- ALL PLANTINGS SHALL BE DONE IN ACCORDANCE WITH THE LANDSCAPE ARCHITECT'S SPECIFICATIONS.
- THE CONTRACTOR SHALL BE RESPONSIBLE FOR THE PROTECTION OF ALL EXISTING TREES AND LANDSCAPE ELEMENTS.
- ALL PLANTINGS SHALL BE DONE IN ACCORDANCE WITH THE LANDSCAPE ARCHITECT'S SPECIFICATIONS.
- THE CONTRACTOR SHALL MAINTAIN ACCESS TO ALL UTILITIES AND SERVICES AT ALL TIMES.

SITE CATEGORY CALCULATION FORMATS

Item	Value	Weight	Weighted Value
Site Area	100,000	1.0	100,000
Impervious Area	20,000	0.5	10,000
Roof Area	10,000	0.2	2,000
Asphalt Parking	5,000	0.3	1,500
Concrete Parking	5,000	0.4	2,000
Grass	30,000	0.1	3,000
Other Vegetation	10,000	0.2	2,000
Total	185,000		125,500

PERCENT IMPERVIOUS AREA

$\frac{125,500}{185,000} = 67.8\%$

PERCENT TREE CANOPY COVER

$\frac{3,000}{185,000} = 1.6\%$

PE SCHEDULE:

Item	Quantity	Unit	Notes
Asphalt Paving	10,000	Sq. Yd.	4" thick
Concrete Paving	5,000	Sq. Yd.	4" thick
Grass	30,000	Sq. Yd.	Establishment
Other Vegetation	10,000	Sq. Yd.	Establishment

VERBAL TO BE INSTALLED BY THE OWNER

THE CONTRACTOR SHALL BE RESPONSIBLE FOR THE PROTECTION OF ALL EXISTING TREES AND LANDSCAPE ELEMENTS.

ALL PLANTINGS SHALL BE DONE IN ACCORDANCE WITH THE LANDSCAPE ARCHITECT'S SPECIFICATIONS.

THE CONTRACTOR SHALL MAINTAIN ACCESS TO ALL UTILITIES AND SERVICES AT ALL TIMES.

FILE NO.: PPR-15-037