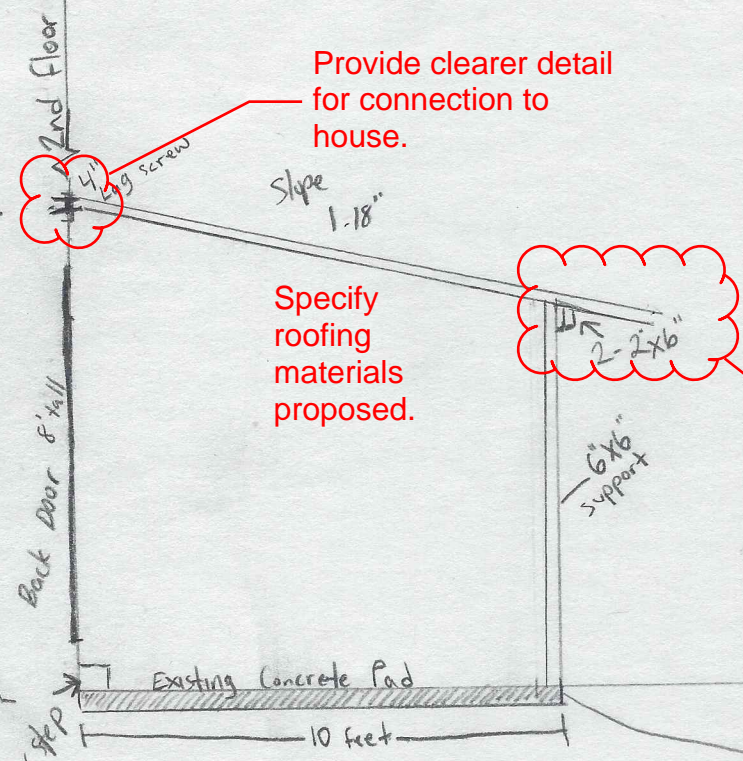


2361 Springsid Dr.



Provide clearer detail for connection to house.

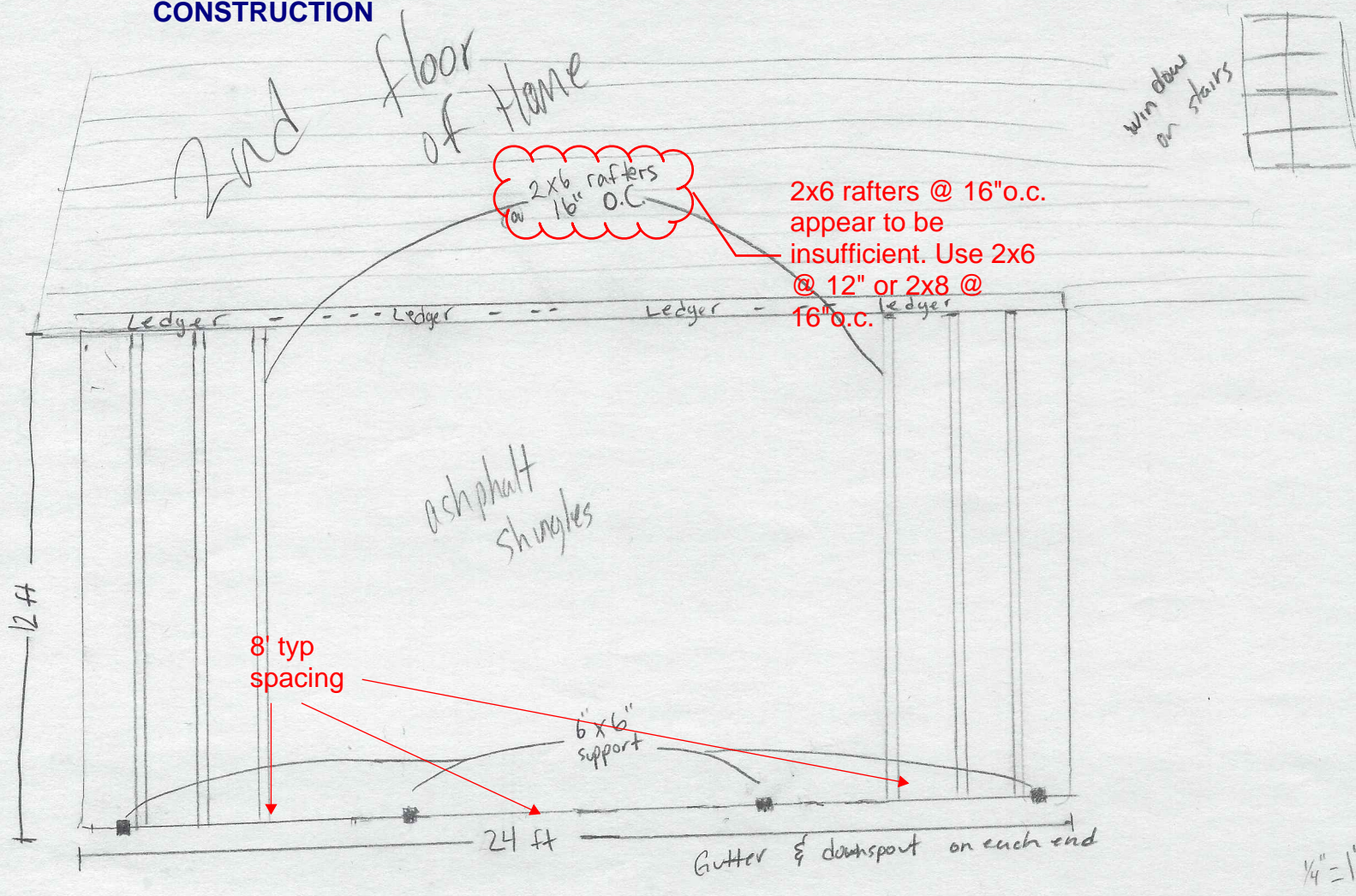
Specify roofing materials proposed.

Clarify if rafters go past beam, or end flush. Double 2x6 beam inadequate. Triple 2x6 or double 2x8 will work, however. Revise.

DISAPPROVED

02/12/2021 4:18:30 PM

**bphillips
CONSTRUCTION**



2x6 rafters @ 16" o.c.

2x6 rafters @ 16" o.c. appear to be insufficient. Use 2x6 @ 12" or 2x8 @ 16" o.c.

1/4" = 1'