

FIRE PROTECTION PLAN

for

OHANA ACRES

17825 Jones Road, Peyton CO 80831

V I L Filing No. 1A

Located in a portion of the Northwest Quarter of Section 130
Township 13 South, Range 63 West of the 6th P.M., El Paso County, Colorado

The property is located on the eastern edge of the Falcon Fire Protection District. The proposed subdivision would consist of Lot 1 with an existing residential home, a detached garage and two other out buildings. The remaining three lots would each be 4.75 acres, RR-5.

The property is in a WIJJ risk area of 1-2. The property is slightly rolling on the west side with a slope to the north and east. The vegetation on the property is primarily prairie grass.

The Falcon Fire Protection District stations serving the area are: Station 1 at 12072 Royal County Down Road which is 9 miles from the property and sixteen minutes away, Station 3 at 7030 Old Meridian Road which is nine miles from the property and thirteen minutes away and unmanned Station 6 at 15355 Jones Road which is 2.5 miles from the property and four minutes away.

Proposed mitigation, which has always been done at the existing house, would be to mow all grass within 200 feet of buildings to a maximum height of four inches. All remaining property to be mowed to allow a height of four to twelve inches.

This report was prepared by the homeowner, Gary Hammann, with references to the FFPD Community Wildfire Protection Plan.

Wildfire Risk

Vegetation, in the northern portion of the District, is dominated by a second-growth ponderosa pine forest with a high percentage of closed crowns, and dense pine understory. Fuel models for the Black Forest timber are:

- FBO Fuel Models **1** and **9**⁶
- NFDRS Models **U** and **L**⁷

The majority of the District is covered by prairie fuels intermixed with low shrub species. Fuel models for these areas are:

- FBO Fuel Models **1** and **2**
- NFDRS Models **A**, **C**, **L** and **T**

Riparian zones along waterways and seasonal storm channels are made up of shrub species such as willows and cottonwoods, intermixed with grass fuels. These areas are of particular concern where they abut high density subdivisions; especially under drought conditions. Fuel models for these areas are:

- FBO Model **5**
- NFDRS Models **F** and **T**

The wildfire intensity map represents the Colorado Wildfire Risk Assessment Portal (CO-WRAP) analysis of the potential wildfire intensity in and around the District. Wildfire risk is the chance that a fire might start or spread into the area. Most of the community is at a "Moderate" to "High" risk for wildfire occurrence and intensity.

⁶ *Aids to Determining Fuel Models For Estimating Fire Behavior*, Hal E. Anderson, USDA Forest Service General Technical Report INT-122, April 1982.

⁷ *Gaining an Understanding of the National Fire Danger Rating System (NFDRS)*, PMS 932/NFES 2665, National Wildfire Coordinating Group (NWCG), 2002.

Preparedness to Respond

FFPD Stations and Apparatus

Station 1

Located in the Woodmen Hills neighborhood, this is the primary response station for areas north of Woodmen Road. Groundbreaking for the 15,500-square foot station took place July 31, 2009, and the station became operational in May 2010. The station has a Community Room and a First Aid room. It also serves as the District's primary fitness center for its personnel.

Apparatus at Station 1 include:

- An engine
- A water tender (water truck)
- A brush truck
- An AMR ambulance
- A pump tender (engine tender)
- A command vehicle

Station 2

Located on Meridian Road, this is currently an unstaffed station. It also serves as the fleet maintenance and repair facility for minor work on apparatus and equipment.

Apparatus at Station 2 include:

- A 4-wheel drive engine
- A water tender
- A brush truck

Station 3 / HEADQUARTERS / TRAINING

With the opening of Station 1, the Falcon Fire Department's building on Old Meridian Road became a true headquarters facility that includes administration functions such as human relations and payroll. It hosts the monthly Falcon Fire Protection District Board meetings, and serves as the Department's primary classroom and training facility for emergency medical services, fire, hazardous materials, and technical rescue disciplines.

Apparatus at Station 3 include:

- An engine
- A tender
- A utility truck

- A brush truck

Station 6 (formerly Station 3)

Located on Jones Road, this is currently an unstaffed station.

Apparatus at Station 6 include:

- A water tender

Staging Areas

The District has identified locations where responding mutual aid or auto aid fire departments may be staged for assignment in the early stages of a wildland event, or until an emergency operations center is established. These locations are shown on the map below. These should follow NWCG guidelines for firefighter safety zones, and based on all personnel in full Personal Protective Equipment (PPE). Diameters to be adjusted based on surrounding fuel loading.

Water Supplies

Firefighting water supplies are available through hydrant systems in the developed portions of the District that are served by water districts. However, rural areas are dependent on cisterns. Current cisterns are shown on the map below. These are operated and maintained by fire department staff.

It should be noted both water supplies are intended for use during structure fires in which, typically, only one house is on fire at any one time. Firefighting resources are not required to be mobile. The opposite occurs during a wildland fire in which resources must be mobile, and prepared to move quickly out of harm's way.

Water supplies are critical for maintaining lower ISO (Insurance Services Organization) ratings that affect homeowner insurance rates. The District should continue to require these for all new subdivisions.

Evacuation Centers

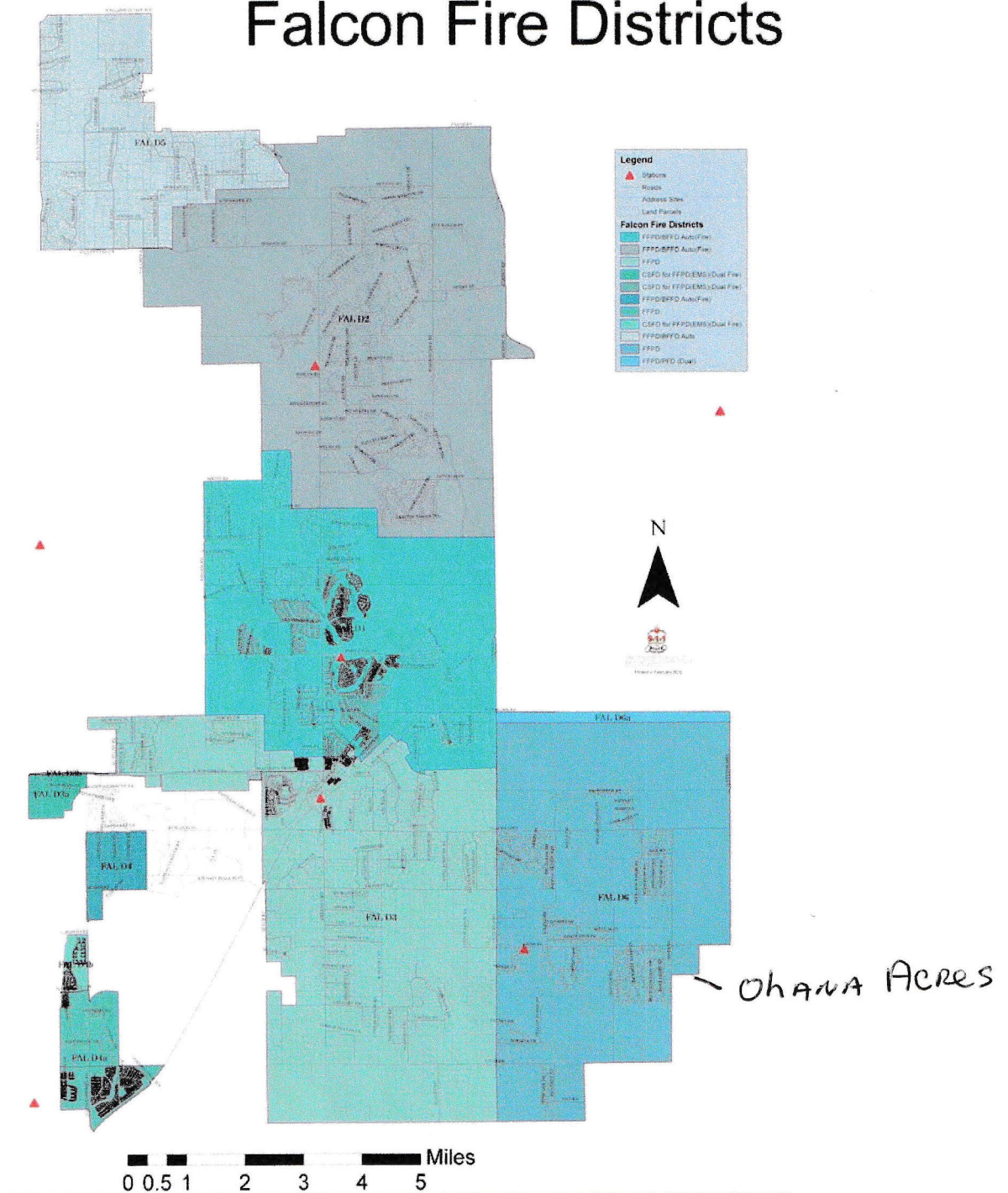
Three primary locations were identified as potential evacuation centers. These are:

- Pikes Peak School of Expeditionary Learning (American Red Cross site)
- Falcon High School
- Falcon Middle School

- Penrose Stadium and El Paso County Fair Grounds (Calhan) for large animals

All of these locations can serve as emergency operation centers. Designation as an evacuation center will normally be determined by El Paso County.

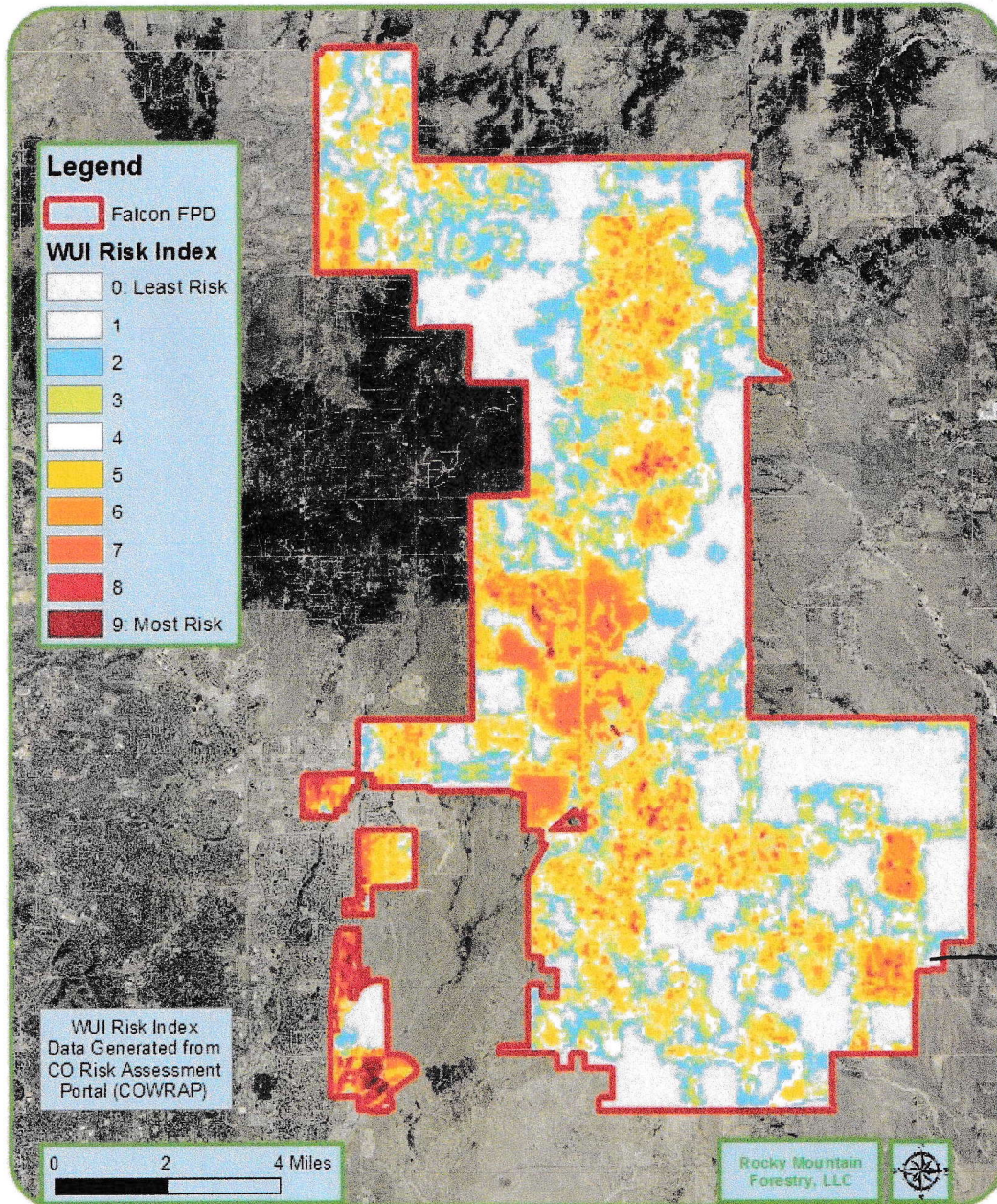
Falcon Fire Districts



Falcon Fire District Map

Community Wildfire Protection Plan

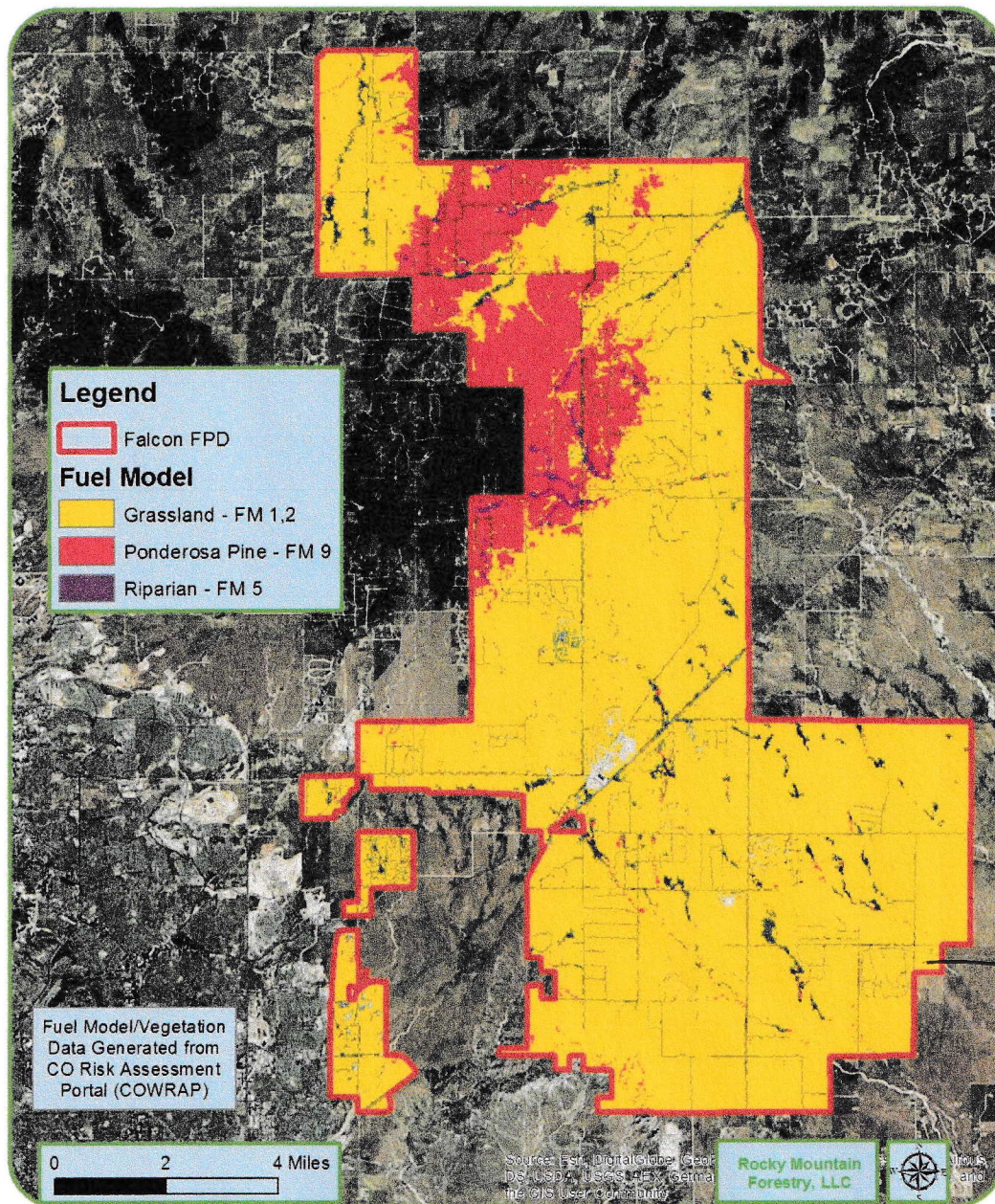
WUI Risk Index: Falcon Fire Protection District



Fire District Boundary and WUI Boundary

Community Wildfire Protection Plan

Fuel Model Map: Falcon Fire Protection District

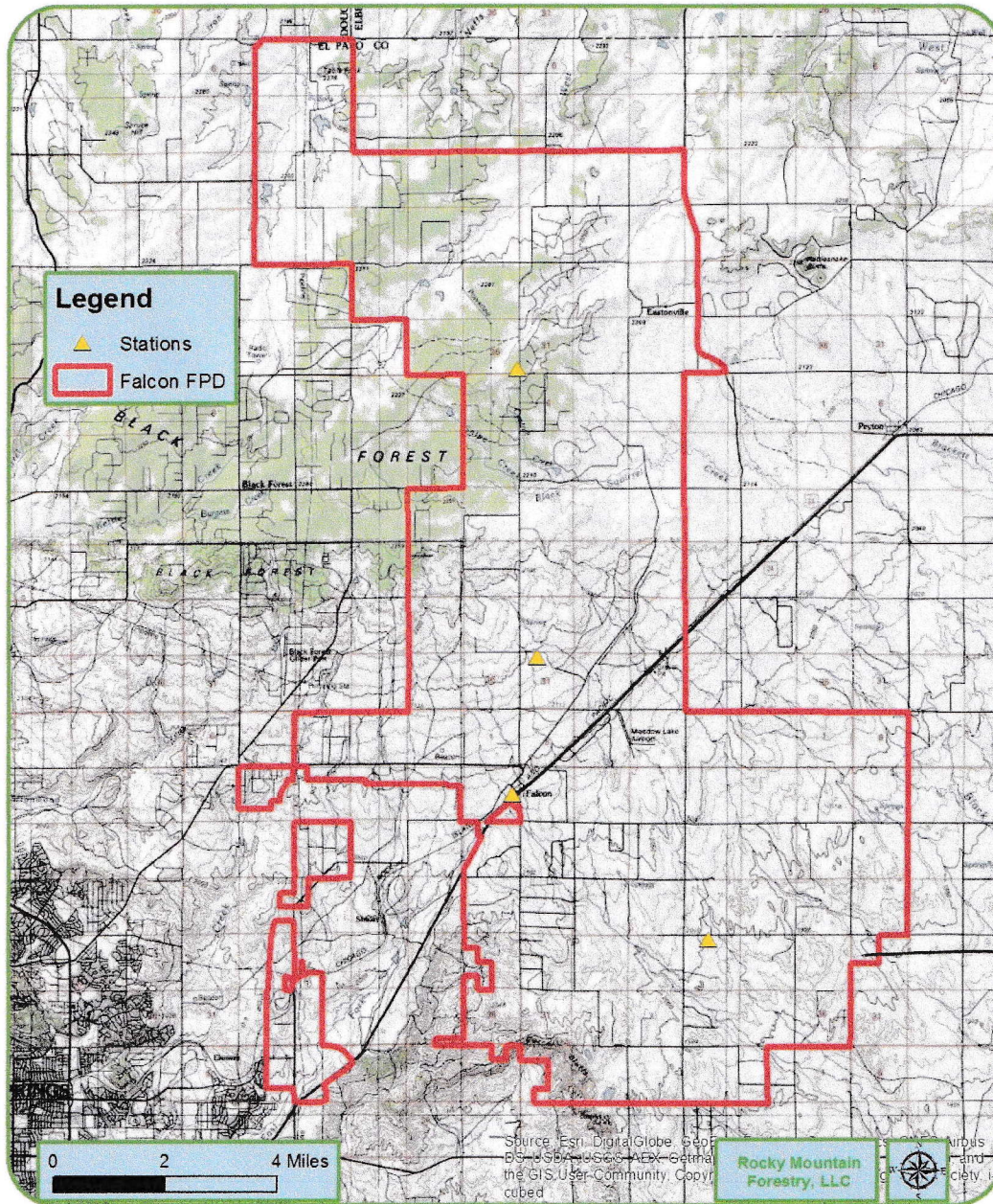


OHANA
ACRES

Wildland Urban Interface Fuel Types (CO-WRAP)

Community Wildfire Protection Plan

Topographic Map: Falcon Fire Protection District



Ohana Acres

Topographic Map of FFPD and Surrounding Area