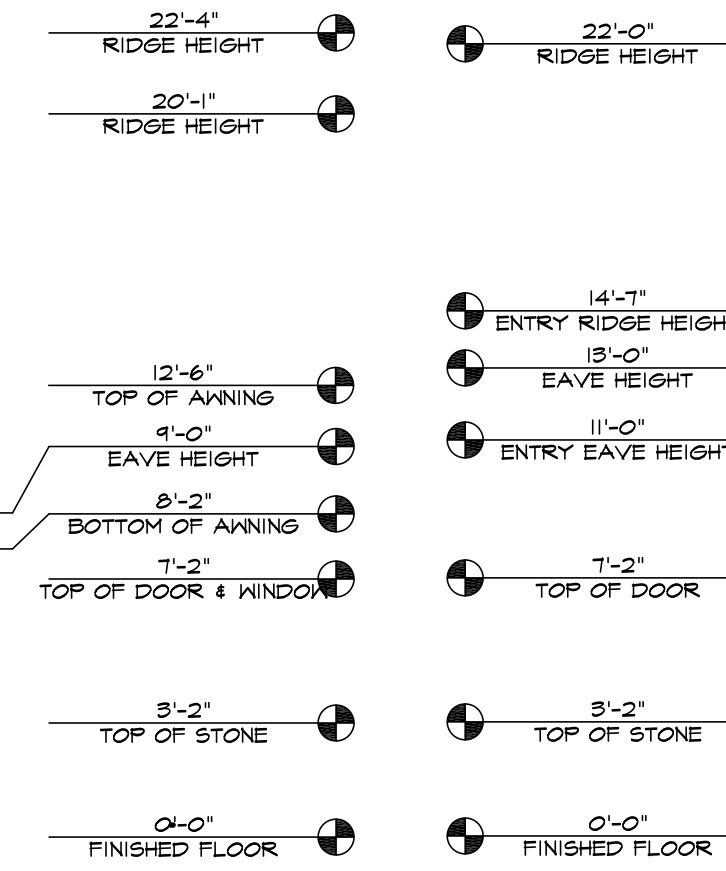
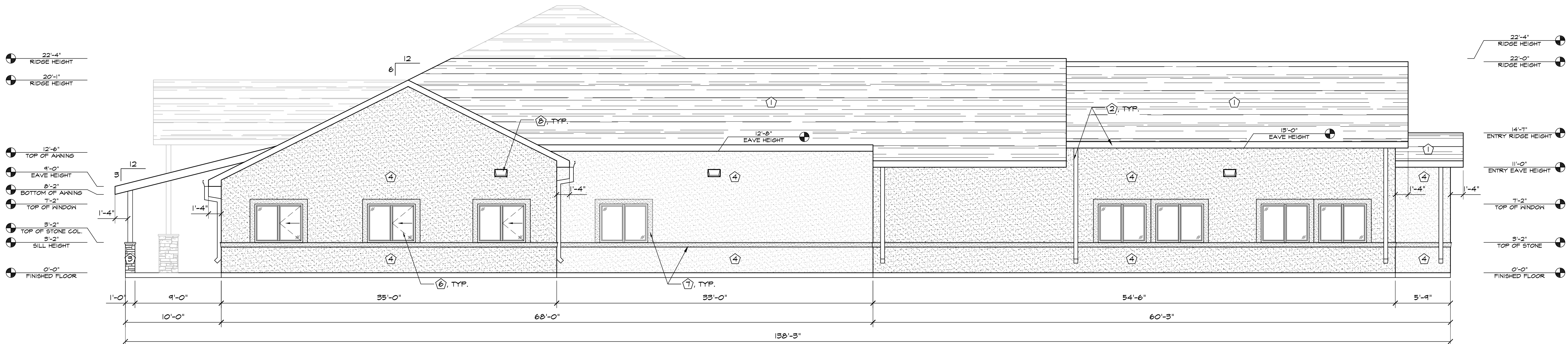


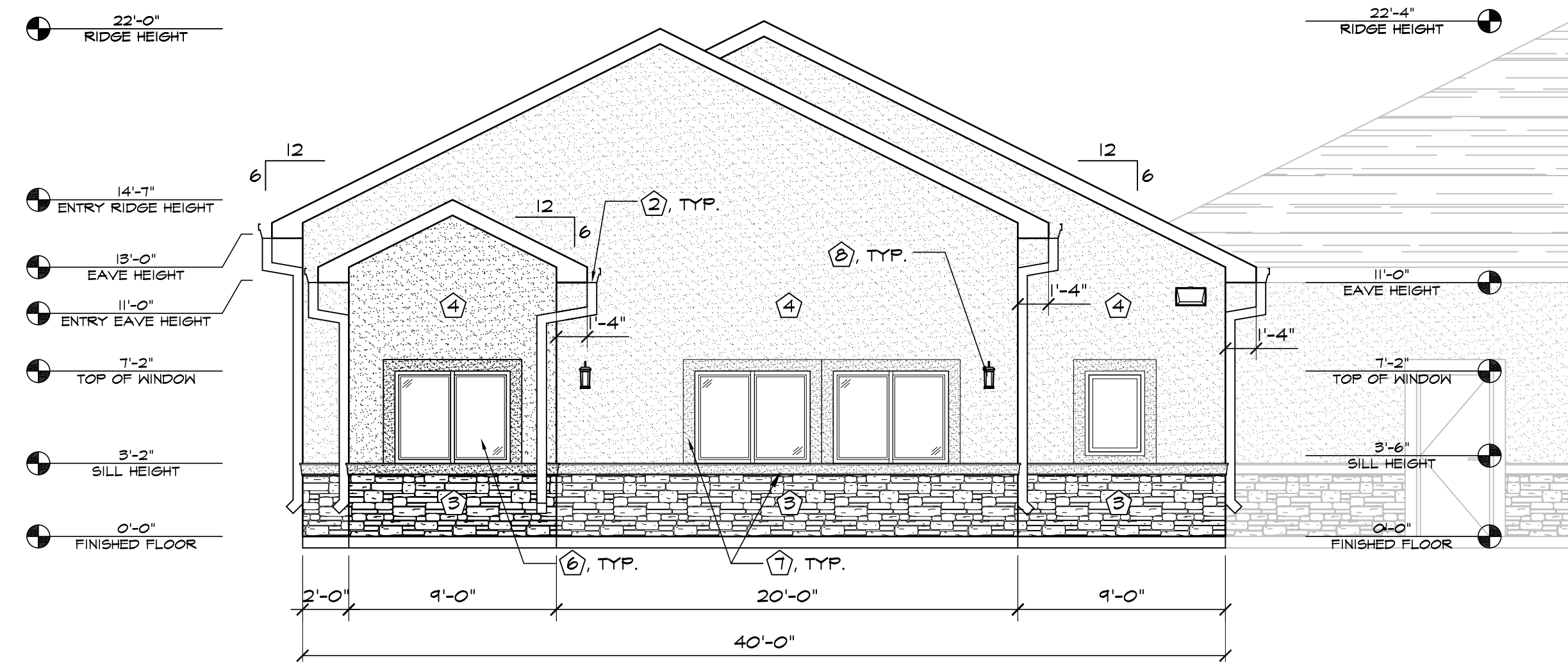
2 EAST ELEVATION
SCALE: 3/16"=1'-0"



1 SOUTH ELEVATION
SCALE: 3/16"=1'-0"



4 NORTH ELEVATION
SCALE: 3/16"=1'-0"



3 WEST ELEVATION
SCALE: 3/16"=1'-0"

ELEVATION KEY NOTES	
1	ASPHALT SHINGLES - COLOR TBD
2	PREFINISHED GUTTER & DOWNSPOUTS BY METAL BLDG PROVIDER-PAINT TO MATCH BLDG COLOR
3	STONE VENEER - COLOR TBD
4	3/4" STUCCO FINISH SYS, EXPANSION JOINT - 120 SF MAX AREA - COLOR TBD
5	NOT USED
6	SEE SCHEDULES ON "A" SHEETS FOR ALL DOOR INFORMATION
7	6" FOAM STUCCO BAND - COLOR TBD
8	SEE ELECTRICAL PLANS FOR ALL LIGHTING TYPES & LOCATIONS

EL PASO COUNTY FILE NO. PPR-1839

HAMMERS CONSTRUCTION INC.
COMMERCIAL GENERAL CONTRACTORS SPECIALIZING IN DESIGN/BUILD
PRESIDENT: STEVE R. HAMMERS
VICE PRES: DAVID J. HAMMERS
1411 WOOLSEY HEIGHTS
COLORADO SPRINGS, CO 80915
(719) 570-1599 FAX (719) 570-7008
www.hammersconstruction.com

THIS DRAWING CONTAINS MATERIAL & INFORMATION WHICH MAY NOT BE REPRODUCED WITHOUT WRITTEN CONSENT OF HAMMERS CONSTRUCTION, INC. THESE DRAWINGS ARE INTENDED TO BE USED ONLY BY HAMMERS CONSTRUCTION & ITS REPRESENTATIVES. THESE DRAWINGS HAVE NOT BEEN PREPARED FOR ANY OTHER PURPOSE THAN TO INDICATE THE GENERAL FEATURES AND PLACEMENT OF THE PROPOSED PROJECT. COPYRIGHT © 2018 HAMMERS CONSTRUCTION

TENDER CARE VETERINARY CENTER
8036 MERIDIAN PARK DR.
PEYTON, CO 80831
EL PASO COUNTY, COLORADO

DATE: AUGUST 23, 2018
DRAWN BY: J.CANTERBERRY
PROJ. MNGR: J. BUTLER
SCALE: SEE PLAN
APPROVED BY:
JOB NO: 1074

RESUBMITTALS:
10/19/18/ DP COMMENTS 9/26/18
12/12/18/ FINAL SUBMITTAL