

» Critical Habitat

Critical Habitat Spatial Extents

Population(s)



wherever found

13090 W RAVINE DR
COLORADO SPRINGS CO

CLEAR - OK PER NR



» Critical Habitat

Critical Habitat Spatial Extents

Population(s)



wherever found



U.S. Fish & Wildlife Service

Search ECOS



ECOS Environmental Conservation Online System

Conserving the Nature of America

[ECOS](#) Species Profile

Preble's meadow jumping mouse (*Zapus hudsonius preblei*)

[Range Information](#) | [Candidate Info](#) | [Federal Register](#) | [Recovery](#) | [Critical Habitat](#) | [ISSA](#) | [Conservation Plans](#) | [Petitions](#) | [Biological Opinions](#) | [Life History](#)

Taxonomy: [View taxonomy in ITIS](#)

Listing Status: **Threatened**

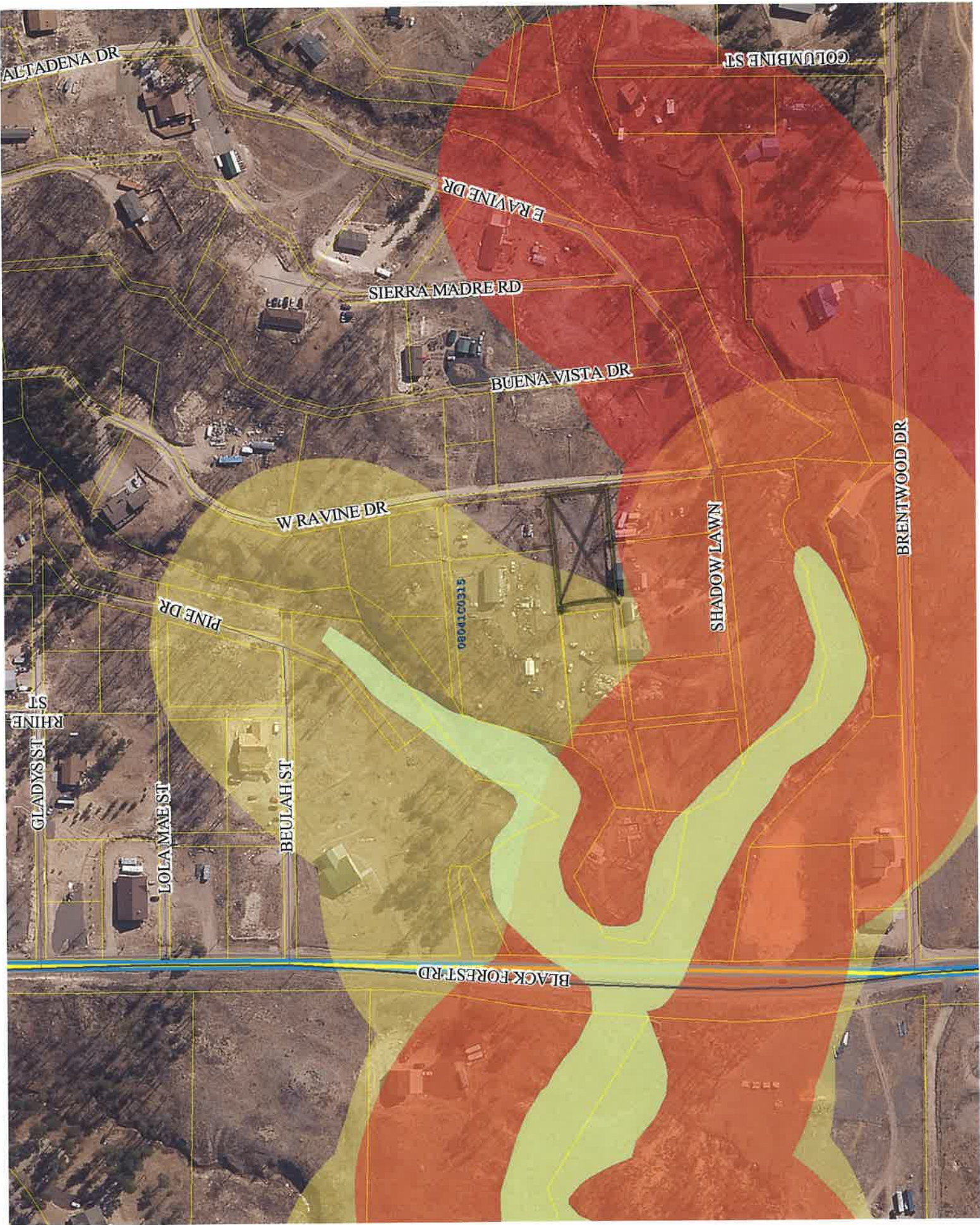
Where Listed: **WHEREVER FOUND**

General Information

The Preble's meadow jumping mouse (Preble's or PMJM) is a small mammal approximately 9 inches in length with large hind feet adapted for jumping, a long bicolored tail (which accounts for 60% of its length), and a distinct dark stripe down the middle of its back which is bordered on either side by gray to orange-brown fur. To evade predators, the mouse can jump up to three feet.

The species historical range included Colorado, Wyoming. See below for information about where the species is known or believed to occur.





ALTADENA DR

COLUMBINE ST

E RAVINE DR

SIERRA MADRE RD

BUENA VISTA DR

W RAVINE DR

PINE DR

08041C0315

SHADOW LAWN

BRENTWOOD DR

RHINE ST

GLADYS ST

LOLA MAE ST

BEULAH ST

BLACK FOREST RD