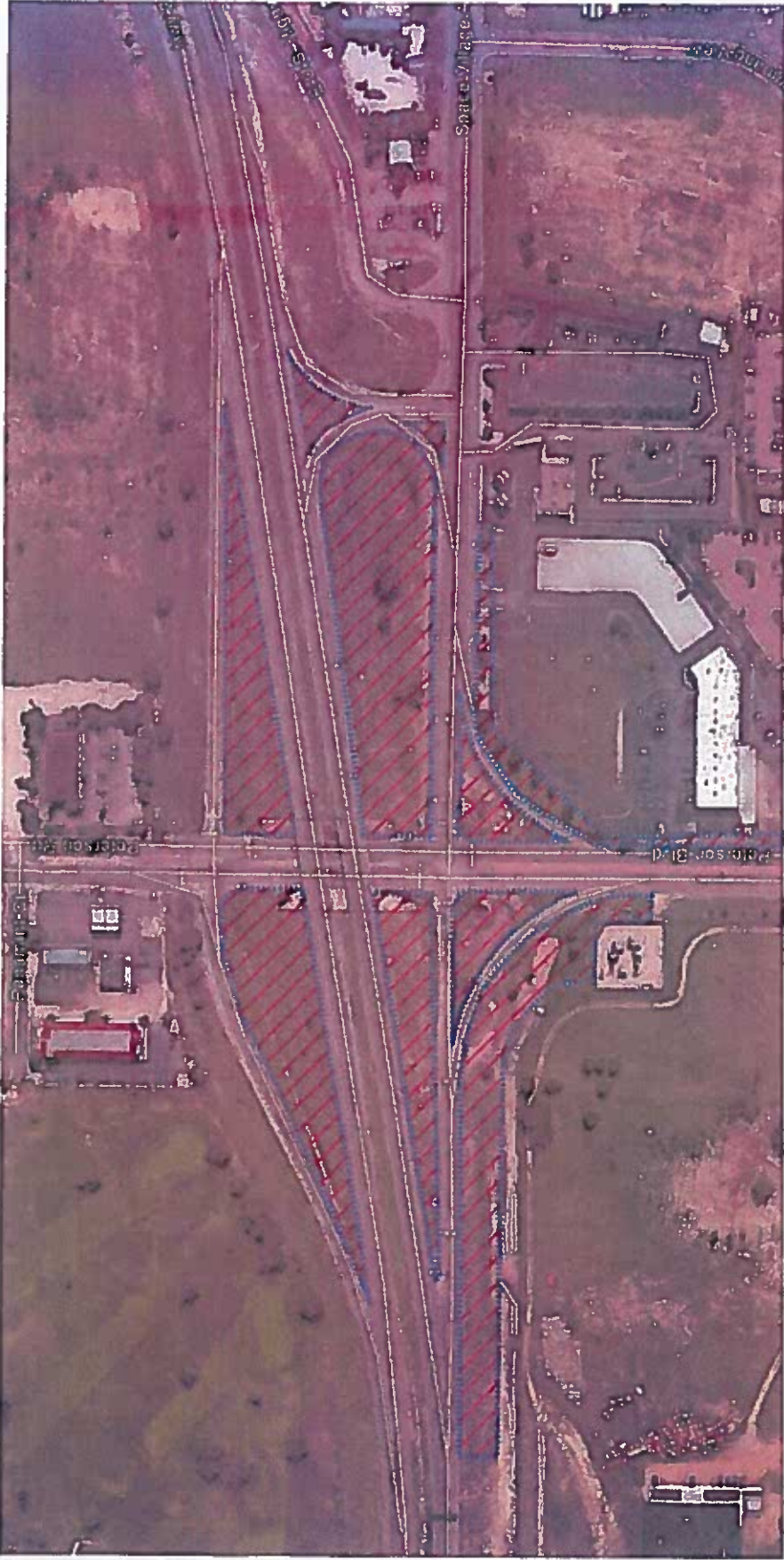


## **EXHIBIT B**

### **DEVELOPMENT SUMMARY AND PUBLIC IMPROVEMENT PLAN MAP**

The proposed development plan includes anticipated completion of in excess of an estimated \$1,100,000 of on and off-site public improvements including, but not limited to, on and off-site streets, roadway and landscaping improvements.

*See attached Public Improvement Plan Map.*



Peterson Gateway Metropolitan District, Public Improvement Plan Map

