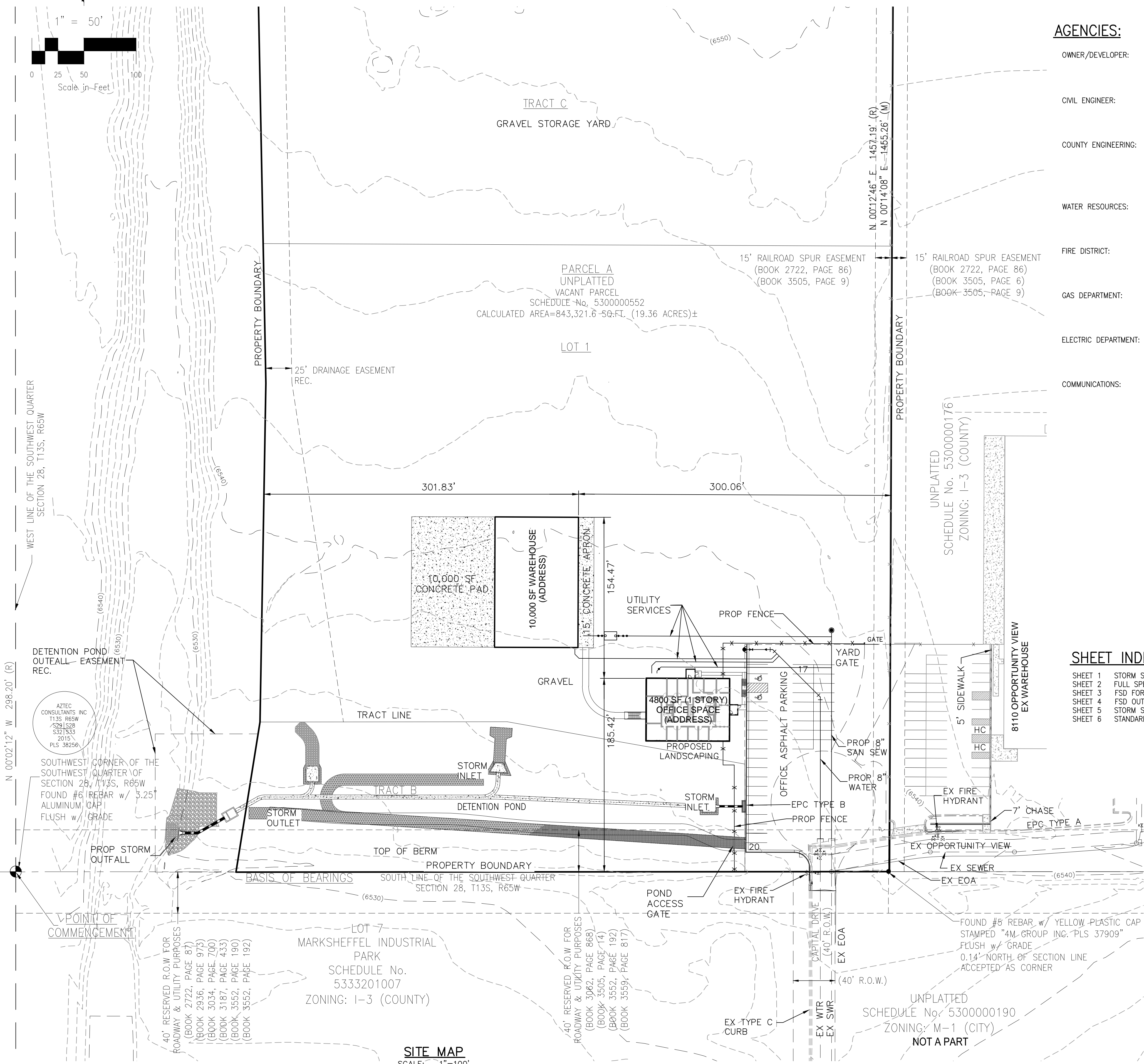


# DWIRE YARD - STORMWATER & DETENTION POND PLANS

EL PASO COUNTY, STATE OF COLORADO

A PORTION OF THE SOUTHWEST QUARTER OF SECTION 28, TOWNSHIP 13 SOUTH, RANGE 65 WEST OF THE 6TH PRINCIPAL MERIDIAN,



## AGENCIES:

OWNER/DEVELOPER: DL HOLDINGS LLC  
6547 N. ACADEMY BLVD #523  
COLORADO SPRINGS, CO 80918  
JEFF DWIRE (719) 574-7123

CIVIL ENGINEER: M & S CIVIL CONSULTANTS, INC.  
102 E. PIKES PEAK AVE, SUITE 300  
COLORADO SPRINGS, CO 80903  
VIRGIL A. SANCHEZ P.E. (719) 955-5485

COUNTY ENGINEERING: EL PASO COUNTY PLANNING AND COMMUNITY  
DEVELOPMENT DEPARTMENT  
2880 INTERNATIONAL CIRCLE, SUITE 110  
COLORADO SPRINGS, CO 80910  
JEFF RICE, P.E. (719) 520-6300

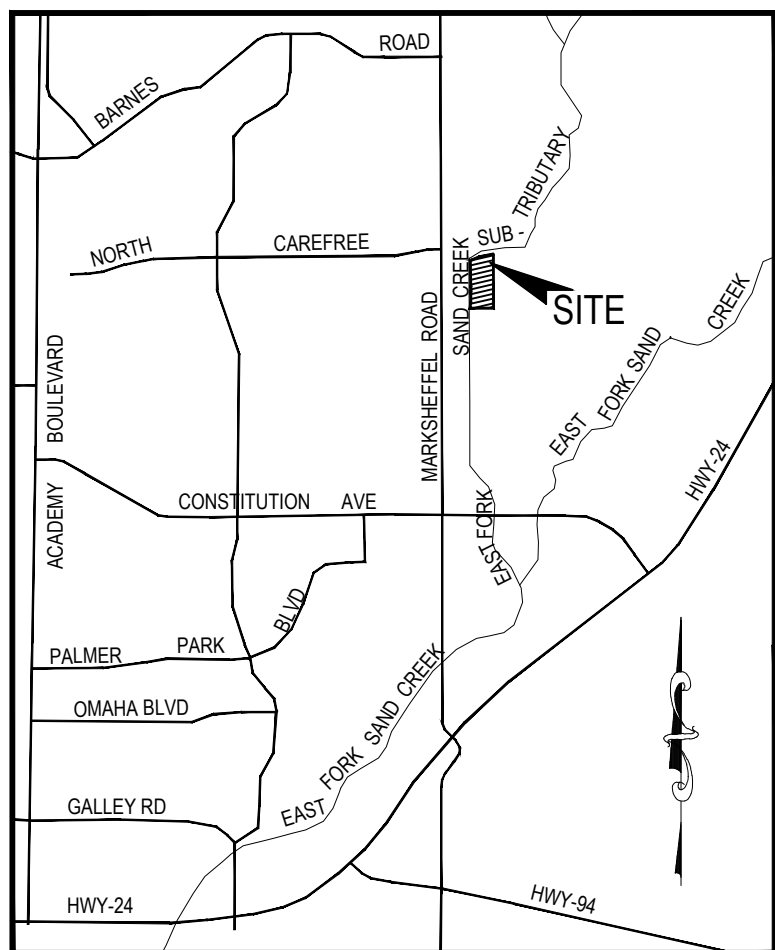
WATER RESOURCES: CHEROKEE METRO DISTRICT  
6250 PALMER PARK, BLVD  
COLORADO SPRINGS, CO 80915  
JEFF MUNGER (719) 597-5080

FIRE DISTRICT: FALCON FIRE DISTRICT  
7030 OLD MERIDIAN ROAD  
FALCON, CO 80831  
CHIEF TRENT HARWIG (719) 495-4050

GAS DEPARTMENT: COLORADO SPRINGS UTILITIES  
7710 DURANT DR.  
COLORADO SPRINGS, CO 80947  
TIM WENDT (719) 668-3556

ELECTRIC DEPARTMENT: MOUNTAIN VIEW ELECTRIC  
11140 E. WOODMEN ROAD  
FALCON, CO 80831  
(719) 495-2283

COMMUNICATIONS: QWEST COMMUNICATIONS  
(U.N.C.C. LOCATORS) (800) 922-1987  
AT&T (LOCATORS) (719) 635-3674



VICINITY MAP  
N.T.S.

## DESIGN ENGINEER'S STATEMENT

THESE DETAILED PLANS AND SPECIFICATIONS WERE PREPARED UNDER MY DIRECTION AND SUPERVISION. SAID PLANS AND SPECIFICATIONS HAVE BEEN PREPARED ACCORDING TO THE CRITERIA ESTABLISHED BY THE COUNTY FOR DETAILED ROADWAY, DRAINAGE, GRADING AND EROSION CONTROL PLANS AND SPECIFICATIONS, AND SAID PLANS AND SPECIFICATIONS ARE IN CONFORMITY WITH APPLICABLE MASTER DRAINAGE PLANS AND MASTER TRANSPORTATION PLANS. SAID PLANS AND SPECIFICATIONS MEET THE PURPOSES FOR WHICH THE PARTICULAR ROADWAY AND DRAINAGE FACILITIES ARE DESIGNED AND ARE CORRECT TO THE BEST OF MY KNOWLEDGE AND BELIEF. I ACCEPT RESPONSIBILITY FOR ANY LIABILITY CAUSED BY ANY NEGLIGENT ACTS, ERRORS OR OMISSIONS ON MY PART IN PREPARATION OF THESE DETAILED PLANS AND SPECIFICATIONS.



VIRGIL A. SANCHEZ, COLORADO P.E. #37160  
FOR AND ON BEHALF OF M & S CIVIL CONSULTANTS, INC.

1-29-21

DATE

## OWNER/DEVELOPER'S STATEMENT:

I, THE OWNER/DEVELOPER HAVE READ AND WILL COMPLY WITH ALL OF THE REQUIREMENTS SPECIFIED IN THESE DETAILED PLANS AND SPECIFICATIONS.

NAME:

2-1-21

DATE

DL Holdings, LLC

BUSINESS NAME:

6799 Bismark Rd. Suite A Colorado Springs, CO 80918

ADDRESS:

## EL PASO COUNTY:

COUNTY PLAN REVIEW IS PROVIDED ONLY FOR GENERAL CONFORMANCE WITH COUNTY DESIGN CRITERIA. THE COUNTY IS NOT RESPONSIBLE FOR THE ACCURACY AND ADEQUACY OF THE DESIGN, DIMENSIONS, AND/OR ELEVATIONS WHICH SHALL BE CONFIRMED AT THE JOB SITE. THE COUNTY THROUGH THE APPROVAL OF THIS DOCUMENT ASSUMES NO RESPONSIBILITY FOR COMPLETENESS AND/OR ACCURACY OF THIS DOCUMENT.

FILED IN ACCORDANCE WITH THE REQUIREMENTS OF THE EL PASO COUNTY LAND DEVELOPMENT CODE, DRAINAGE CRITERIA, AND ENGINEERING CRITERIA MANUAL AS AMENDED.

IN ACCORDANCE WITH ECM SECTION 1.12, THESE CONSTRUCTION DOCUMENTS WILL BE VALID FOR CONSTRUCTION FOR A PERIOD OF 2 YEARS FROM THE DATE SIGNED BY THE EL PASO COUNTY ENGINEER. IF CONSTRUCTION HAS NOT STARTED WITHIN THOSE 2 YEARS, THE PLANS WILL NEED TO BE RESUBMITTED FOR APPROVAL, INCLUDING PAYMENT OF REVIEW FEES AT THE PLANNING AND COMMUNITY DEVELOPMENT DIRECTOR'S DISCRETION.

JENNIFER IRVINE, P.E.  
COUNTY ENGINEER / ECM ADMINISTRATOR

APPROVED  
Engineering Department  
03/17/2021 12:26:08 PM  
dsdnijkamp  
EPC Planning & Community  
Development Department

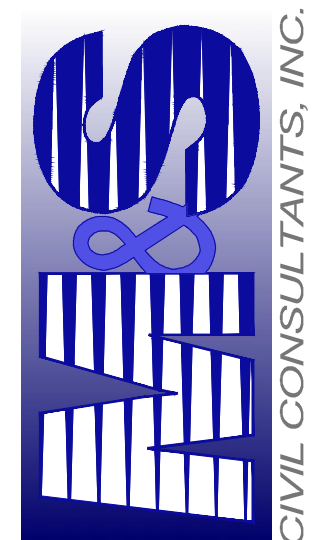
EL PASO COUNTY FILE NO. MS 20-002

DWIRE YARD

STORM SEWER & DETENTION POND PLANS

PROJECT NO. 43-117  
SCALE: 1"=50'  
HORIZONTAL: DLM  
VERTICAL: JP  
DATE: 11/16/2020  
SHEET 1 OF 6  
ST01

102 E PIKES PEAK AVE SUITE 300  
COLORADO SPRINGS, CO 80903  
PHONE: 719.955.5485



FOR AND ON  
BEHALF OF  
M&S CIVIL  
CONSULTANTS,  
INC.



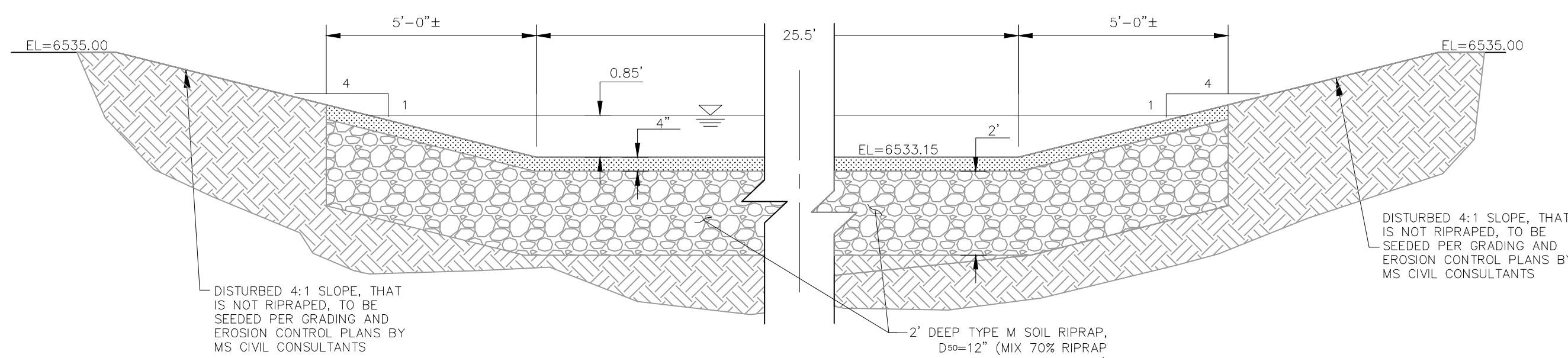
REVISIONS: NO. DATE BY DESCRIPTION APPROVED BY DATE

THE ENGINEER PREPARING THESE PLANS WILL NOT BE RESPONSIBLE, OR LIABLE FOR, UNAUTHORIZED CHANGES TO OR USES OF THESE PLANS. ALL CHANGES TO THE PLANS MUST BE IN WRITING AND MUST BE APPROVED BY THE PREPARER OF THESE PLANS.

CAUTION

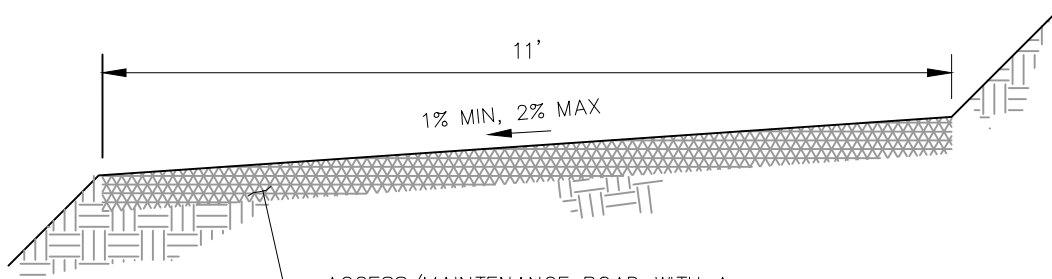


File: 0:\3117A-Dwire Yard\dwire Yard\dwg\Const\DWG\ST01.dwg Plotstamp: 11/18/2020 9:56 AM



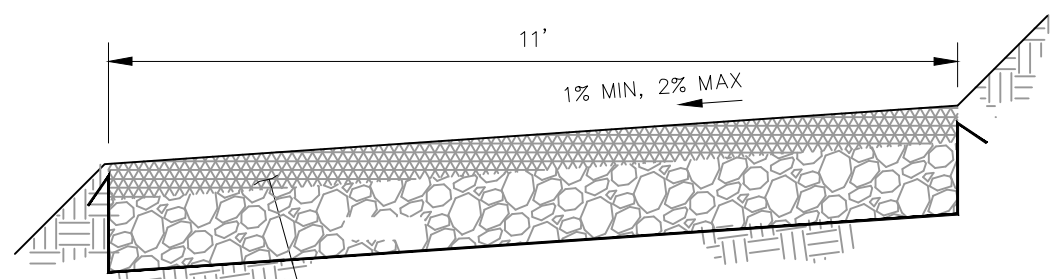
SECTION A-A, EMERGENCY SPILLWAY

NOT TO SCALE



MAINTENANCE & ACCESS ROAD  
ABOVE EURV TYPICAL SECTION

NOT TO SCALE



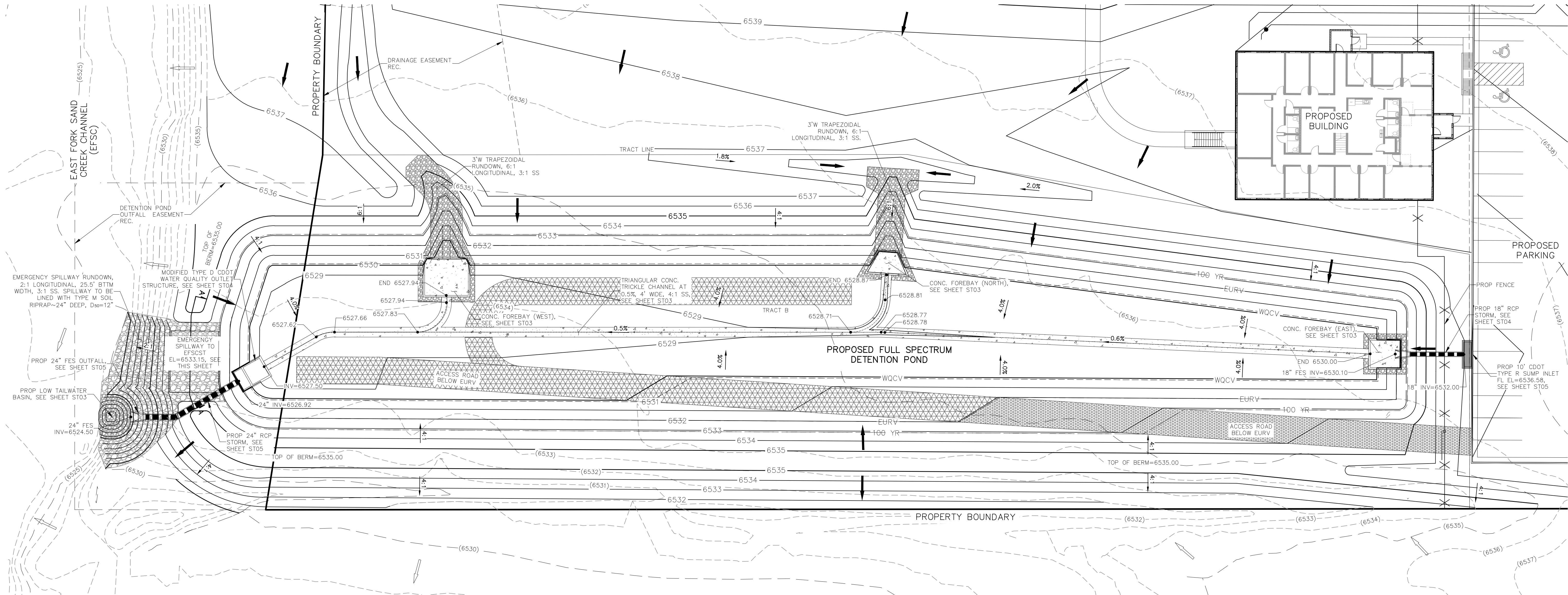
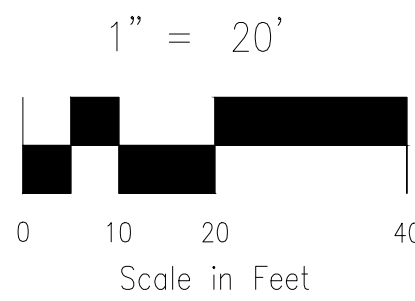
MAINTENANCE & ACCESS ROAD  
BELOW EURV TYPICAL SECTION

NOT TO SCALE

FULL SPECTRUM DETENTION POND DATA	
WQ WATER SURFACE EL=6530.15	
WQ VOLUME=0.453 AC-FT	
EURV WATER SURFACE EL=6532.01	
EURV VOLUME=1.519 AC-FT	
100-YR WATER SURFACE EL=6533.15	
SPILLWAY CREST EL=6533.15	
TOP OF EMBANKMENT EL=6535.00	
100-YR VOLUME=2.352 AC-FT	
100-YR INFLOW=60.4 CFS	
100-YR RELEASE=17.5 CFS	

LEGEND

- |      |                   |  |  |
|------|-------------------|--|--|
| EX   | EXISTING          |  | RIPRAP TYP.                            |
| PROP | PROPOSED          |  | STABILIZED MAINTENANCE ROAD ABOVE EURV |
|      | PROP MAJ CONT     |  | STABILIZED MAINT. ROAD BELOW EURV      |
|      | PROP MIN CONT     |  | CONCRETE LOW FLOW CHANNEL              |
|      | EXIST MAJ CONT    |  | SC250 EROSION CONTROL MATTING          |
|      | EXIST MIN CONT    |  | EX. FLOW ARROW                         |
|      | 100 YR FLOODPLAIN |  | PROP. FLOW ARROW                       |
|      | PROPERTY LINE     |  | PROP STORM SEWER PIPE                  |



FULL SPECTRUM DETENTION POND SITE PLAN

SCALE 1"=20'

STATEMENT:

THE CITY OF COLORADO SPRINGS  
RECOGNIZES THE DESIGN ENGINEER  
AS HAVING RESPONSIBILITY FOR  
THE DESIGN; THE CITY HAS  
LIMITED ITS SCOPE OF REVIEW  
ACCORDINGLY. RESUBMITTAL  
REQUIRED IF CONSTRUCTION HAS  
NOT COMMENCED WITHIN 180 DAYS  
AFTER APPROVAL DATE.



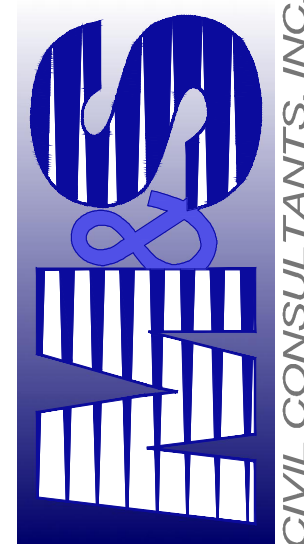
FOR LOCATING  
& MARKING  
GAS,  
ELECTRIC,  
WATER &  
TELEPHONE  
LINES

FOR BURIED UTILITY INFORMATION  
48 HRS BEFORE YOU DIG  
CALL 1-800-922-1987

EPC 3/17/2021

DWIRE STORAGE YARD	
FULL SPECTRUM DETENTION POND SITE PLAN	
PROJECT NO. 43-117	DATE: 11/16/2020
DESIGNED BY: CMM	SCALE: HORIZONTAL: 1"=20'
DRAWN BY: CMM	VERTICAL: N/A
CHECKED BY: VAS	SHEET 2 OF 6
ST02	

20 BOULDER CRESCENT, SUITE 110  
COLORADO SPRINGS, CO 80903  
PHONE: 719.555.5485

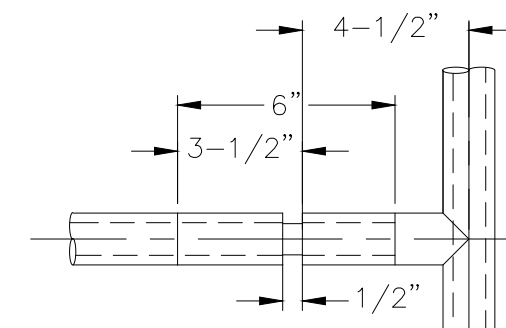
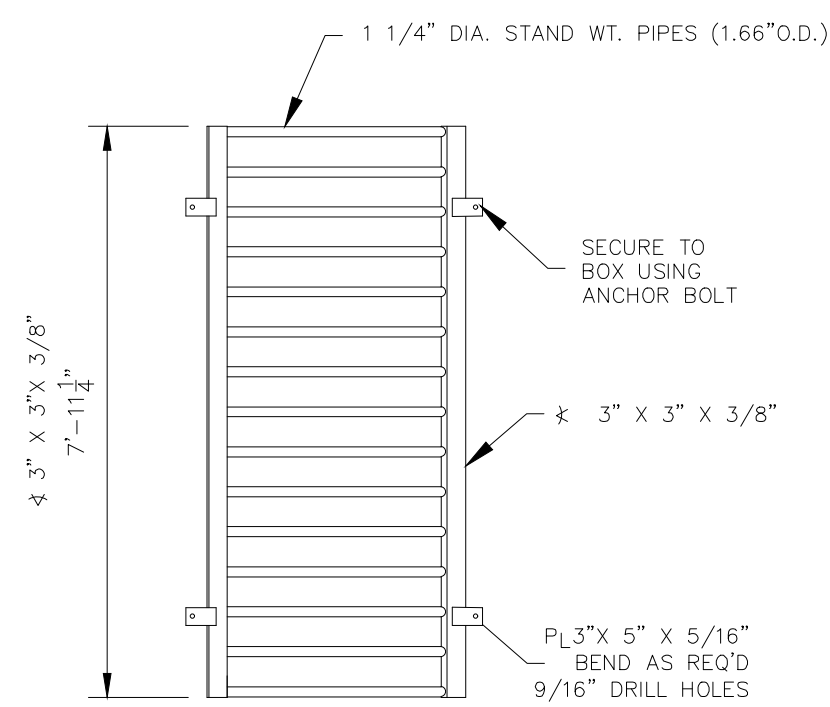


REVISIONS:	NO.	BY:	DESCRIPTION:	DATE:
CAUTION				

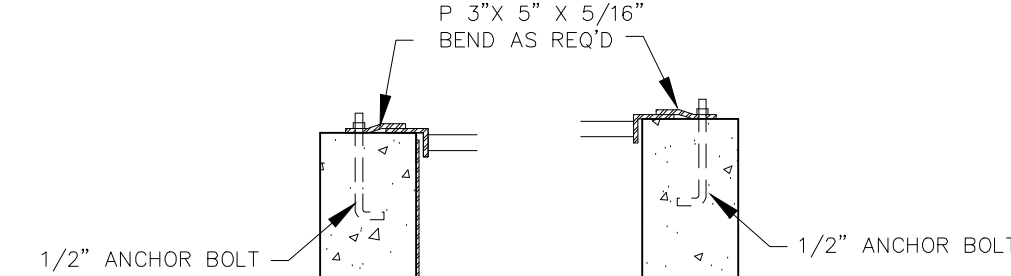








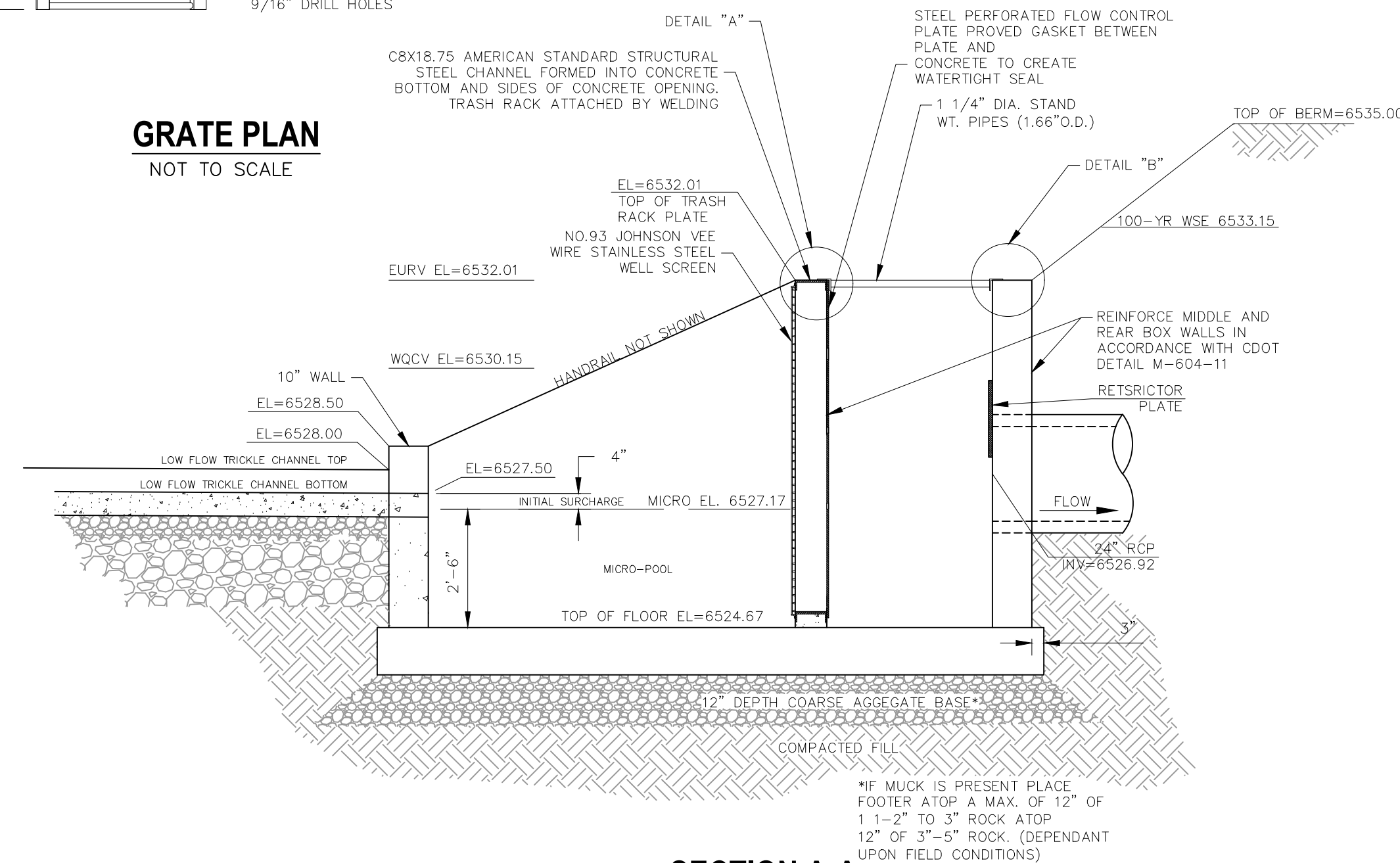
Technical drawing of a shaft and pulley assembly. The shaft has a diameter of  $1\frac{1}{2}$  inches. The pulley has a diameter of  $4\frac{1}{2}$  inches. The shaft is supported by a bearing with a 6-inch distance from the pulley center to the bearing center. The pulley is mounted on the shaft with a  $1\frac{1}{2}$  inch offset from the shaft center to the pulley center.



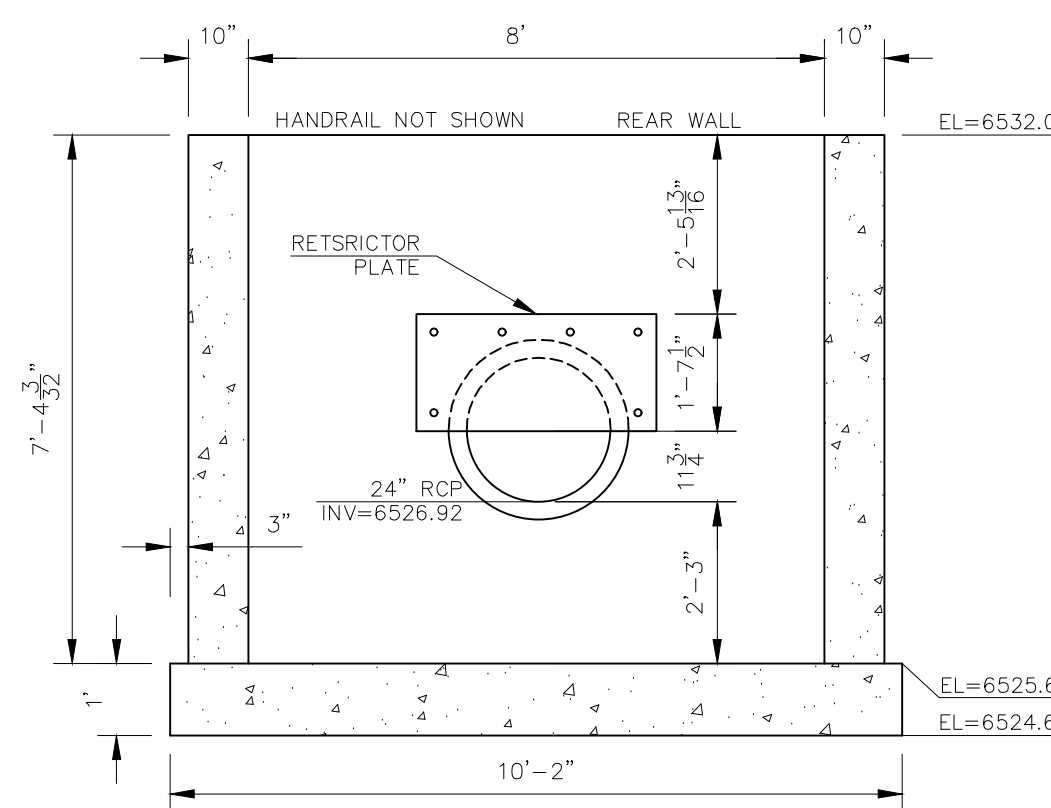
**GRATE**  
**DETAIL "B"**

- 1) WELD PLATES MAY BE SUBSTITUTED FOR PIPE EMBEDMENT.
- 2) CONTRACTOR TO SUBMIT SHOP DRAWINGS TO ENGINEER OF RECORD FOR APPROVAL PRIOR TO FABRICATION.
- 3) DESIGN CRITERIA SHALL BE IN ACCORDANCE WITH AASHTO STANDARDS.
- 4) HANDRAIL DESIGN SHALL BE COMPATIBLE WITH THE DESIGN OF THE WINGWALLS AND HEADWALLS.
- 5) RAILING POSTS SHALL BE SET TO NORMAL TO GRADE. RAILS SHALL RUN PARALLEL TO THE SLOPES OF THE TOP OF WALLS
- 6) ALL RAILS SHALL BE FREE OF ANY SHARP EDGES OR CORNERS.

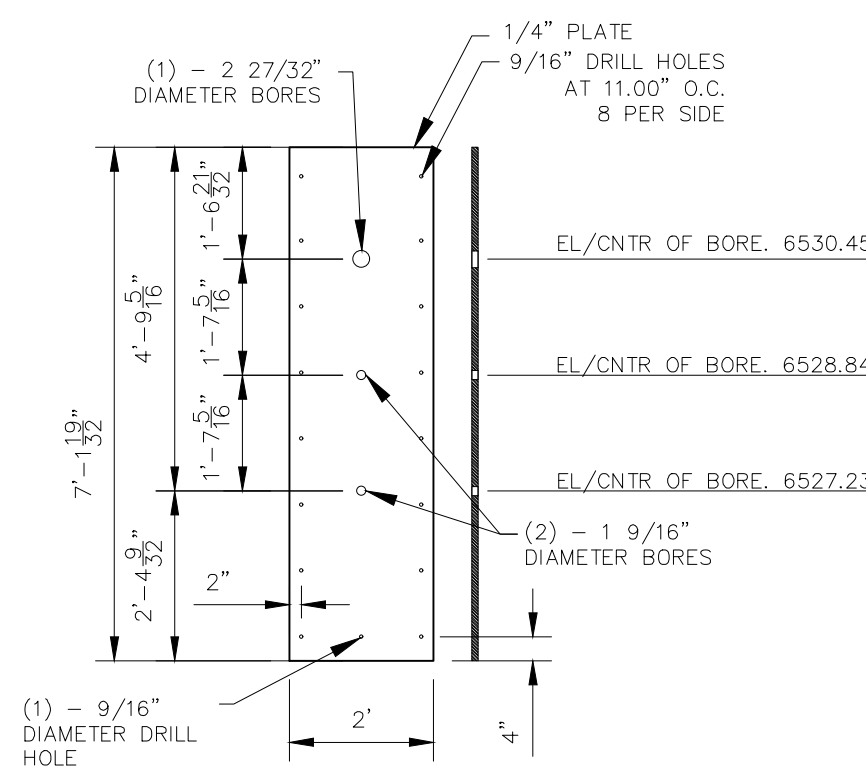
**GRATE PLAN**  
NOT TO SCALE



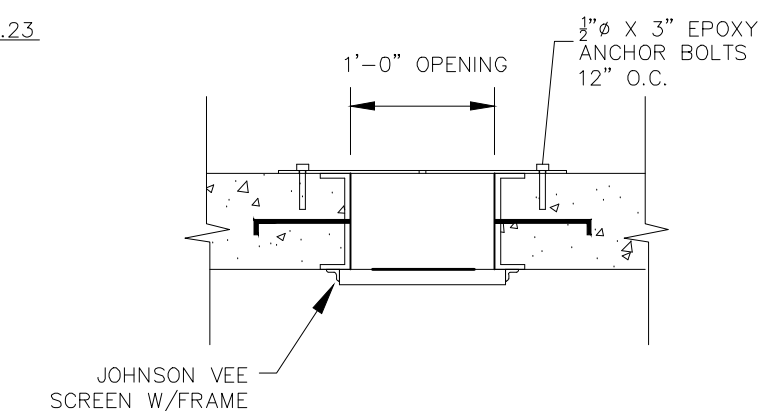
**SECTION A-A**  
NOT TO SCALE



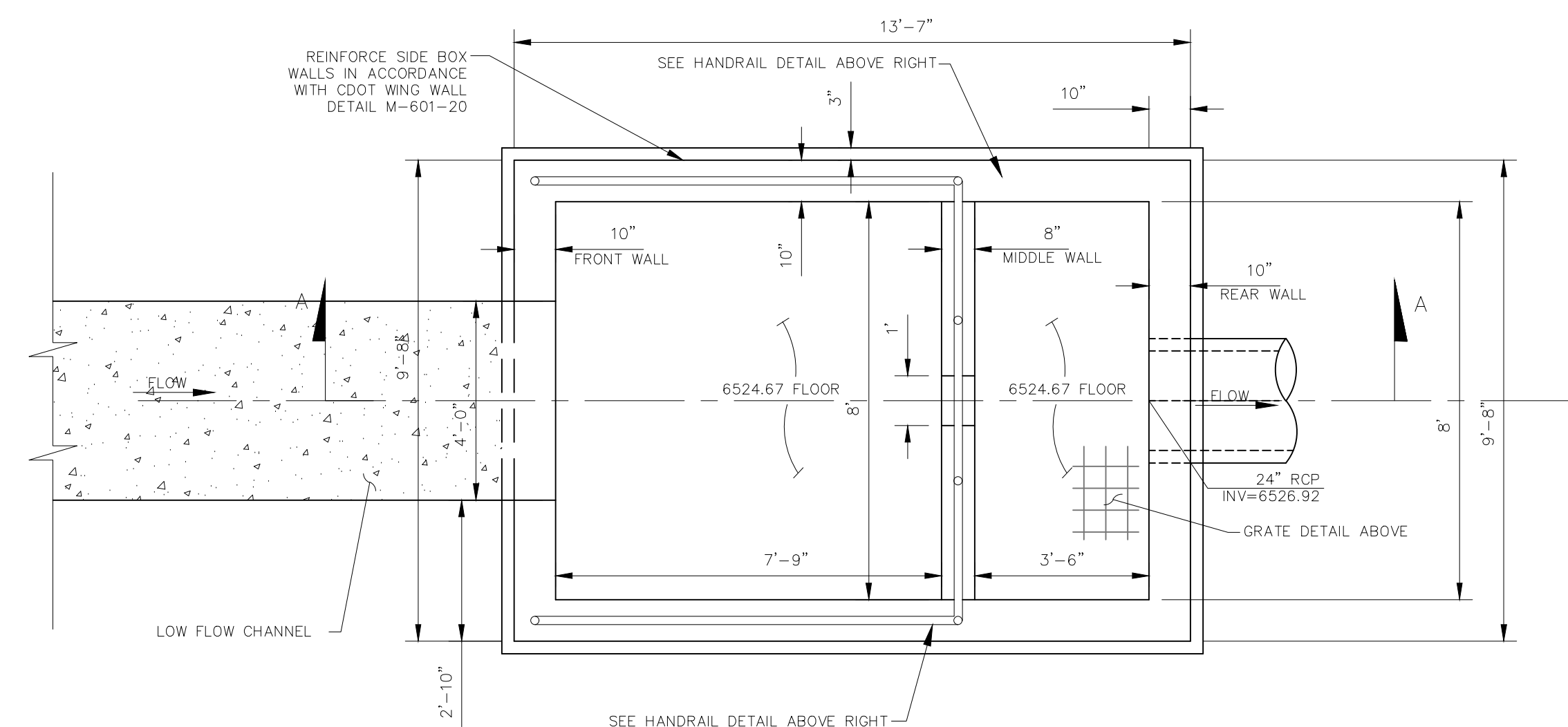
**REAR WALL**  
NOT TO SCALE



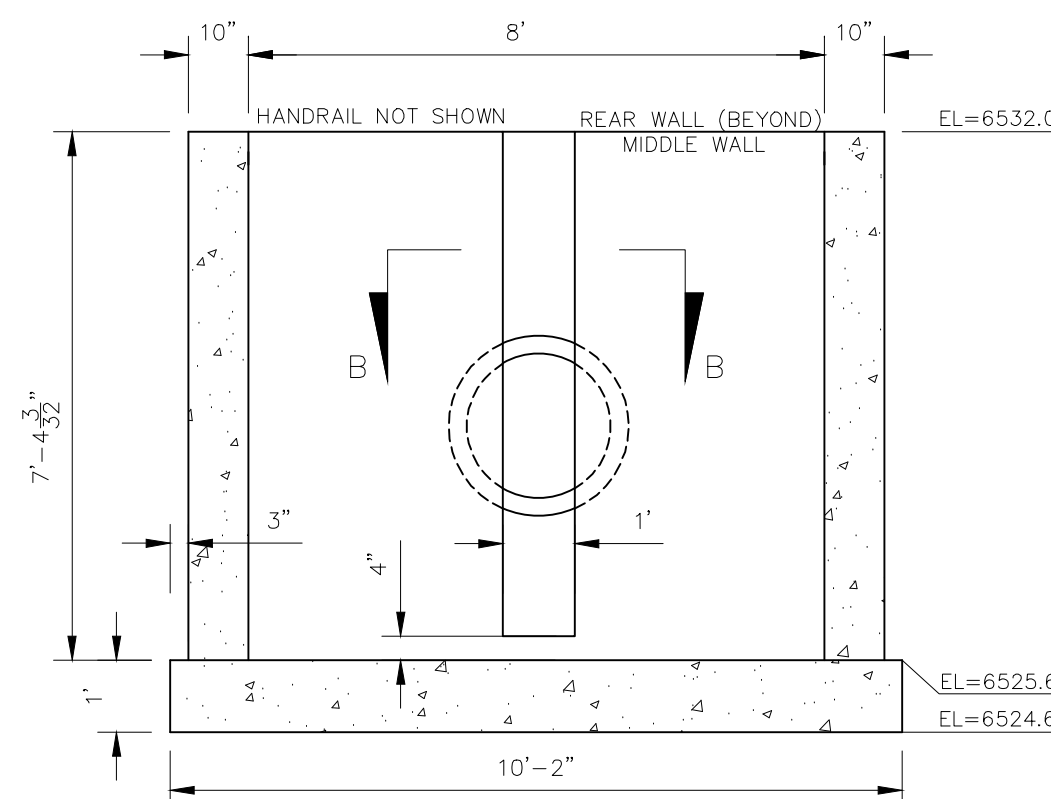
**ORIFICE PLATE**  
NOT TO SCALE



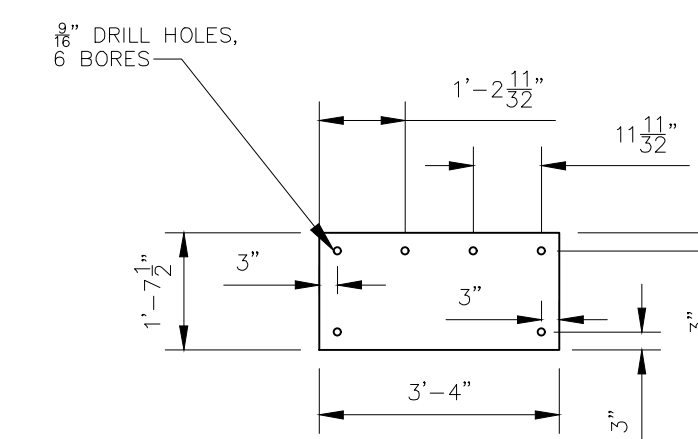
**SECTION B-B**  
NOT TO SCALE



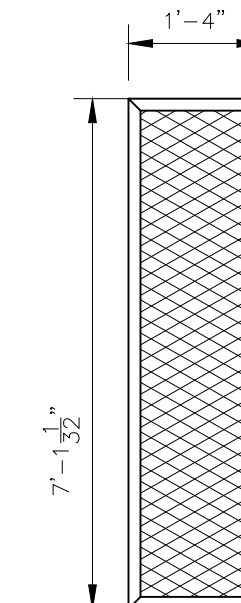
**FDS POND WATER QUALITY OUTLET STRUCTURE**  
NOT TO SCALE



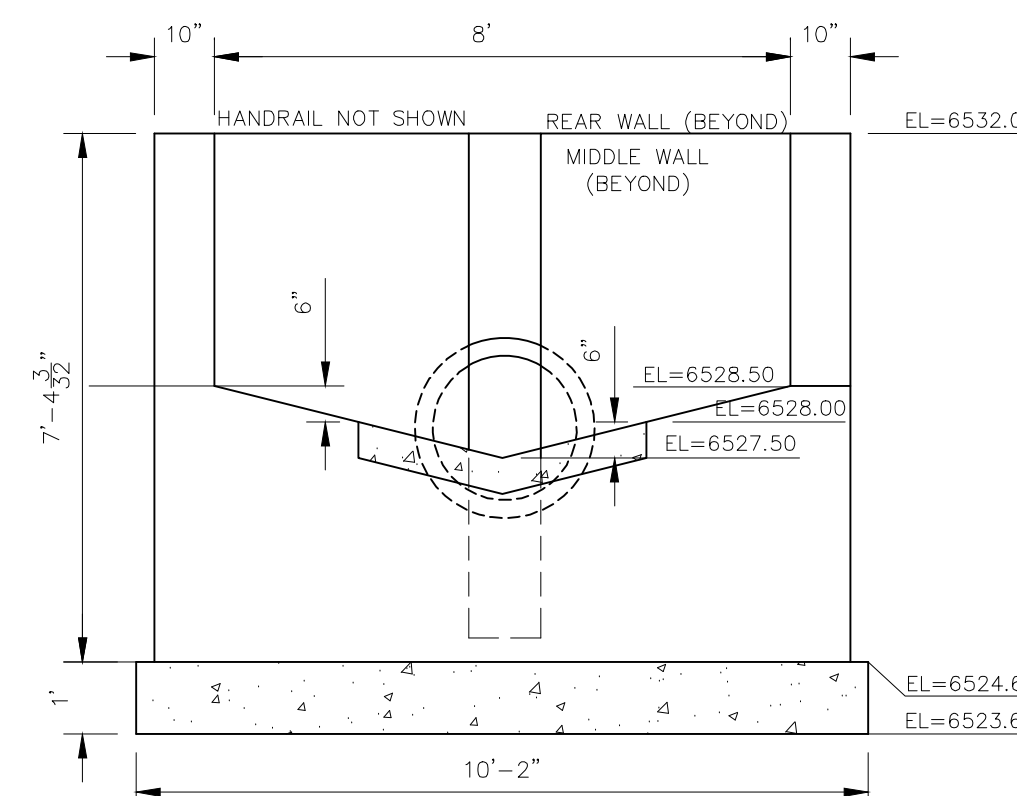
**MIDDLE WALL**  
NOT TO SCALE



**RESTRICTOR PLATE**  
NOT TO SCALE



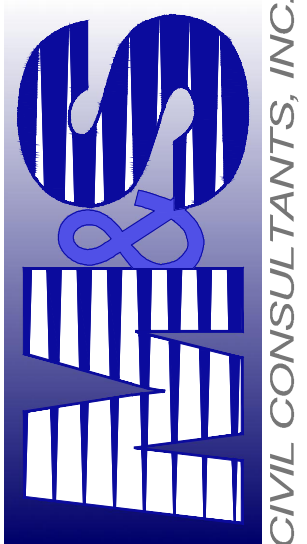
**TRASH SCREEN DETAIL**  
NOT TO SCALE



**FRONT/STEM WALL**  
NOT TO SCALE

NOTE:  
ALL GRATES, IMBEDS, AND  
FASTENERS SHALL BE FABRICATE  
USING GALVANIZED STEEL, UNLES  
OTHERWISE NOTED.

ALL GRATE DIMENSIONS TO BE  
FIELD VERIFIED PRIOR TO  
FABRICATION. ALL GRATE MATERIAL  
SHALL BE GALVANIZED.



VIRGIL A. SANCHEZ, COLORADO P.E. NO. 37160

FOR AND ON  
BEHALF OF  
M&S CIVIL  
CONSULTANTS,  
INC.

[illegible]



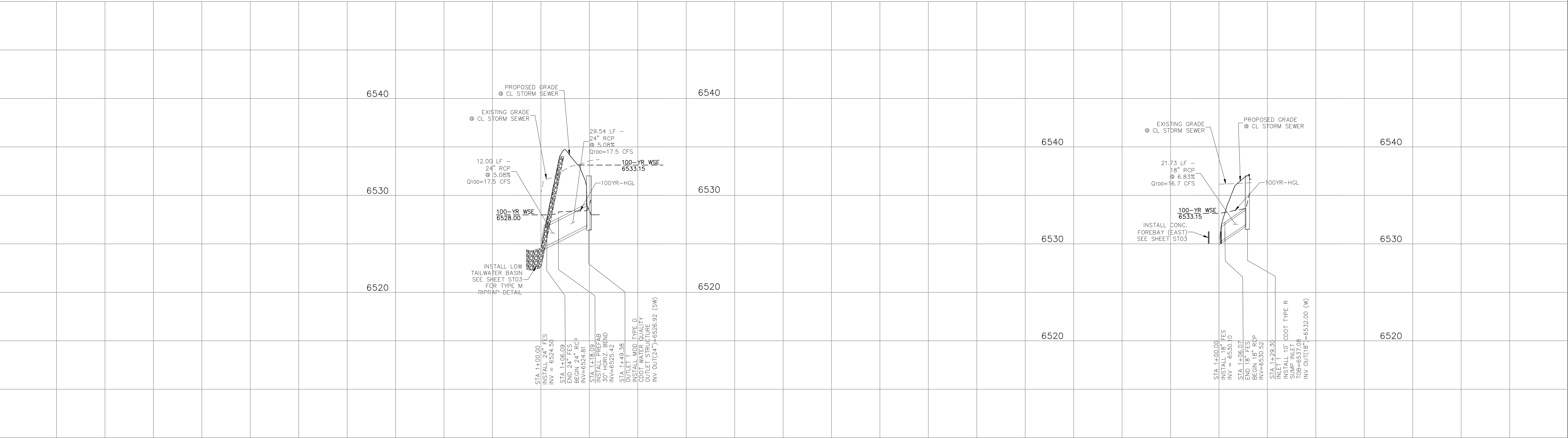
STATEMENT:

THE CITY OF COLORADO SPRINGS  
RECOGNIZES THE DESIGN ENGINEER  
AS HAVING RESPONSIBILITY FOR  
THE DESIGN; THE CITY HAS  
LIMITED ITS SCOPE OF REVIEW  
ACCORDINGLY. RESUBMITTAL  
REQUIRED IF CONSTRUCTION HAS  
NOT COMMENCED WITHIN 180 DAYS  
AFTER APPROVAL DATE.



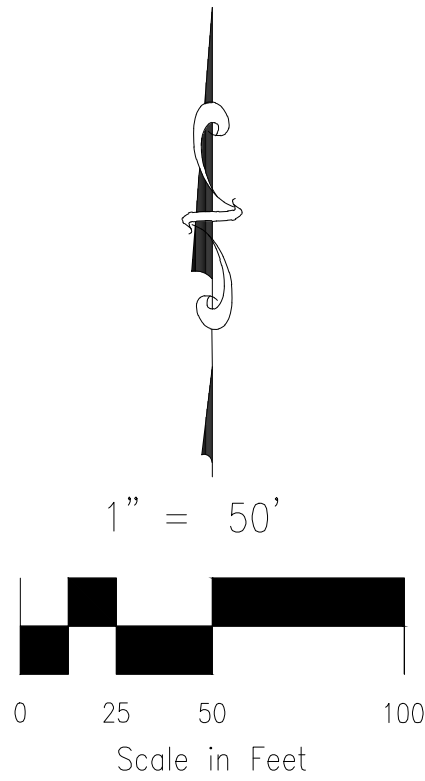
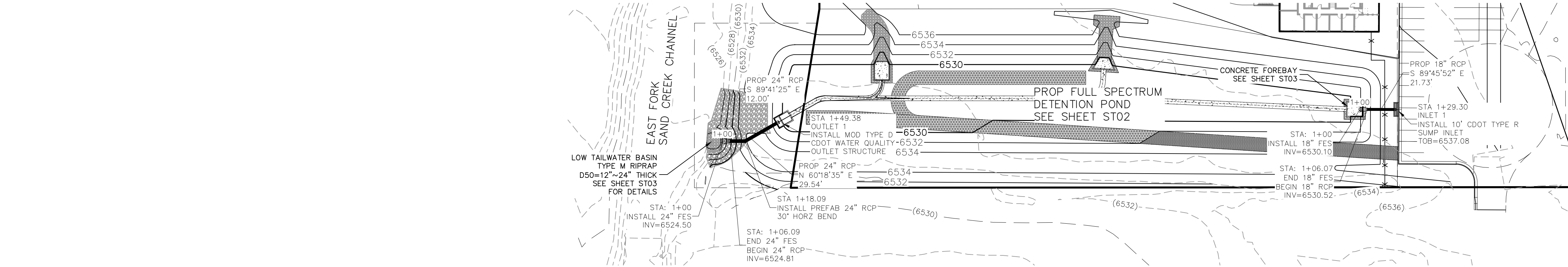
FOR LOCATING  
& MARKING  
GAS,  
ELECTRIC,  
WATER &  
TELEPHONE  
LINES

FOR BURIED UTILITY INFORMATION  
48 HRS BEFORE YOU DIG  
CALL 1-800-922-1987



**24" RCP OUTFALL**  
STA 1+00.00 TO STA 1+49.38

**18" STORM SEWER**  
STA 1+00.00 TO STA 1+29.30



DWIRE STORAGE YARD

STORM SEWER PLAN AND PROFILE

PROJECT NO. 43-117

DESIGNED BY: GT  
DRAWN BY: JWP  
CHECKED BY: GT

SCALE:  
HORIZONTAL:  
1"=50'  
VERTICAL:  
1"=5'

DATE: 11-16-20

SHEET 5 OF 6

ST05

20 BOULDER CRESCENT, SUITE 110  
COLORADO SPRINGS, CO 80903  
PHONE: 719.555.5485

CIVIL CONSULTANTS, INC.

FOR AND ON  
BEHALF OF  
M&S CIVIL  
CONSULTANTS,  
INC.

REVISIONS:

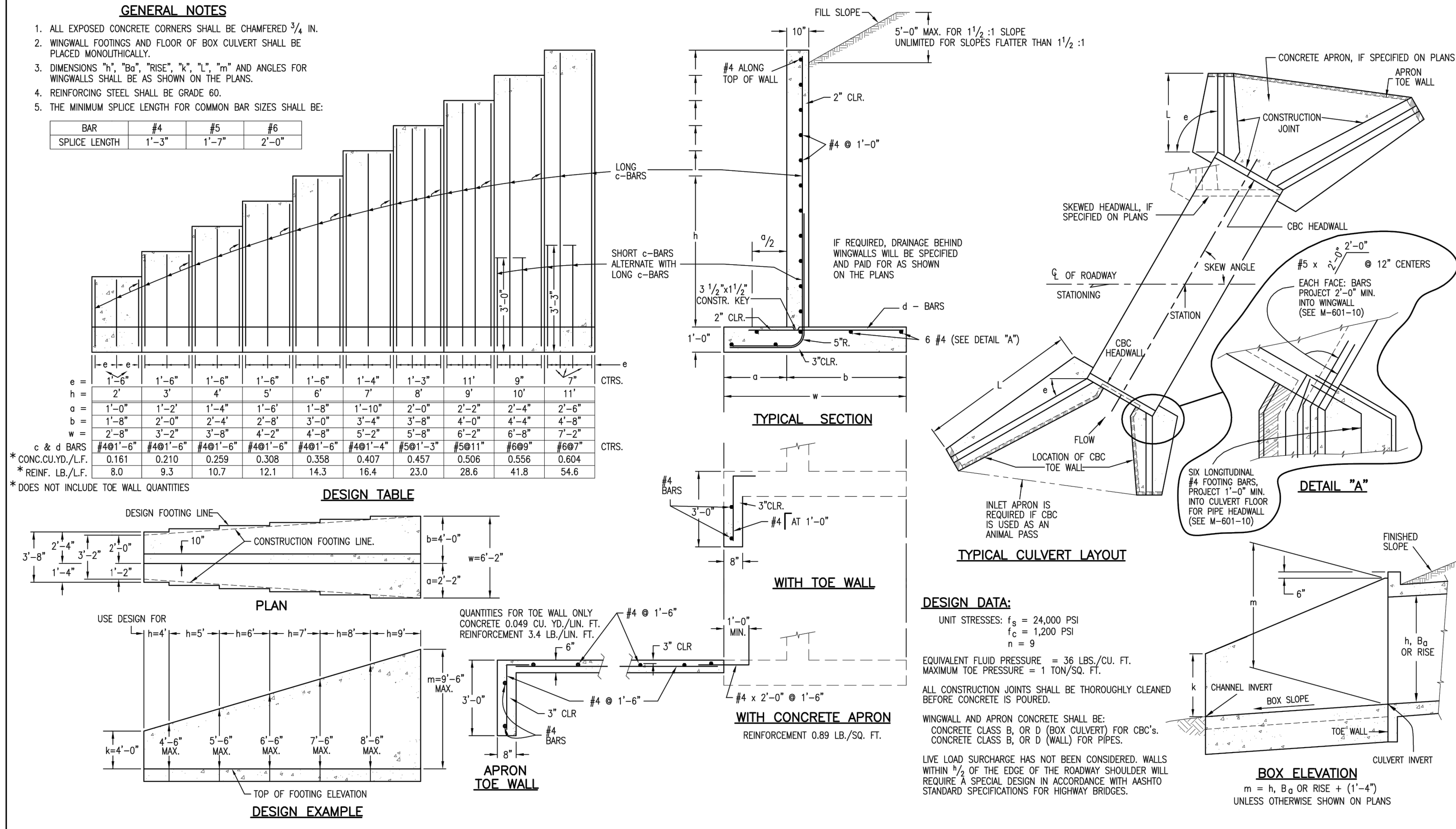
NO.	DATE:	BY:	DESCRIPTION:	APPROV. BY:	DATE:


THE DESIGNER PREPARING THESE PLANS WILL NOT BE RESPONSIBLE, OR LIABLE FOR, UNAUTHORIZED CHANGES TO OR  
USES OF THESE PLANS. ALL CHANGES TO THE PLANS MUST BE IN WRITING AND MUST BE APPROVED BY THE PREPARER  
OF THESE PLANS.

CAUTION

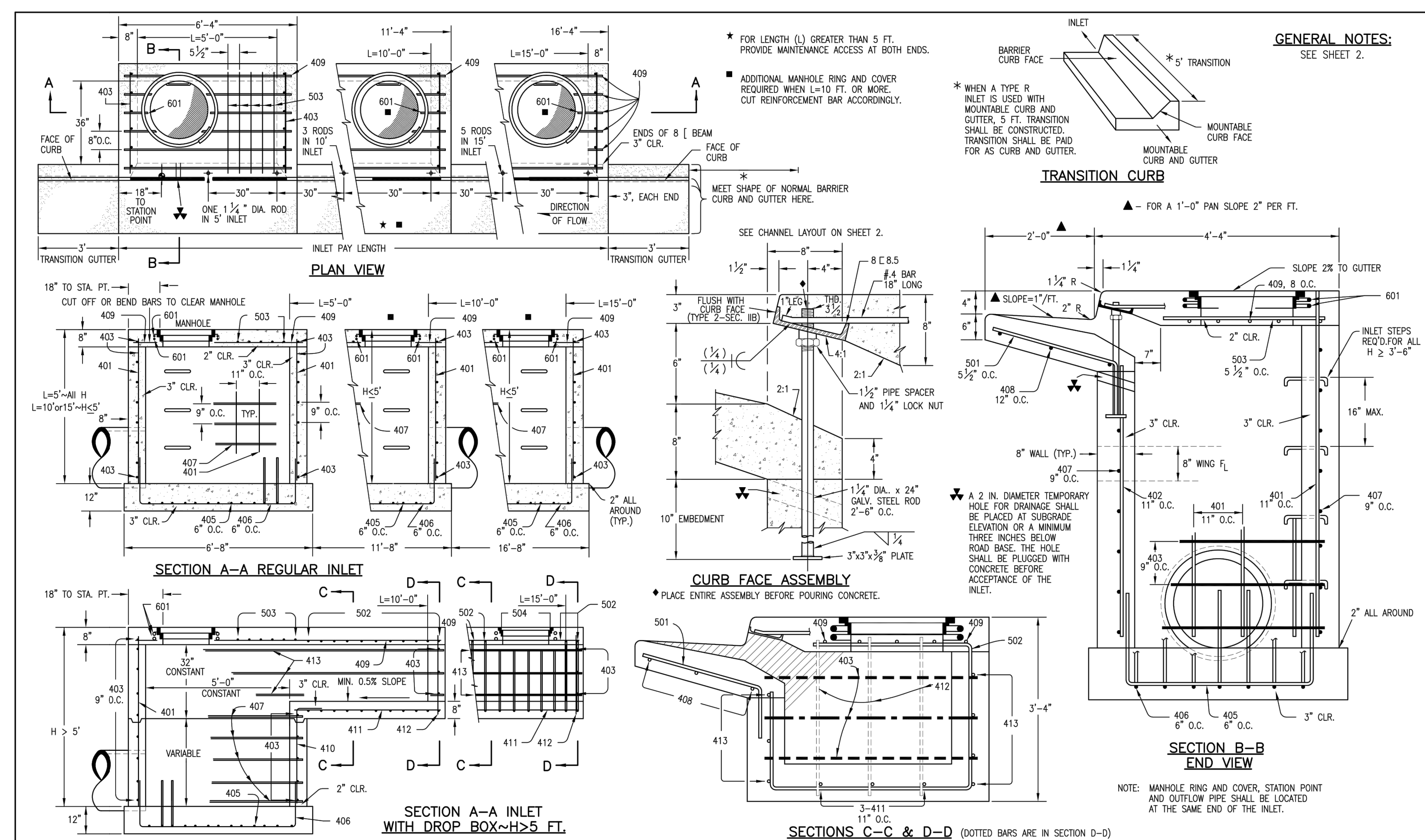
EPC 3/17/2021





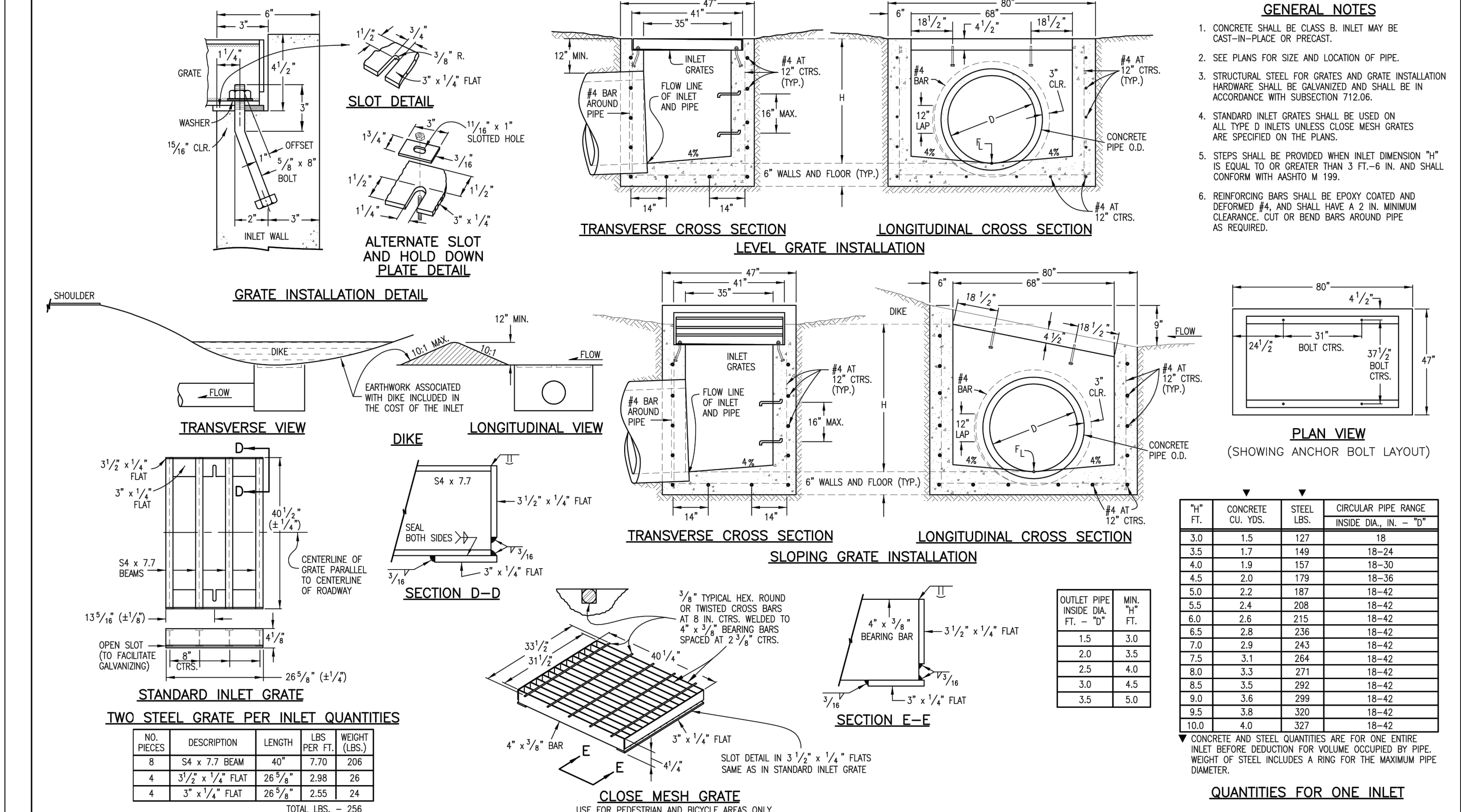
<b>Computer File Information</b>		<b>Sheet Revisions</b>		<b>Colorado Department of Transportation</b>		<b>WINGWALLS FOR PIPE OR BOX CULVERTS</b>		<b>STANDARD PLAN NO</b>	
Creation Date: 07/04/05 Initials: SJR		Date: Comments		 4201 East Arkansas Avenue Denver, Colorado 80222 Phone: (303) 757-9083 Fax: (303) 757-9820		<b>M-601-20</b>		<b>Sheet No. 1 of 1</b>	
Last Modification Date: 07/04/06 Initials: LTA									
Full Path: www.dot.state.co.us/DesignSupport/									
Drawing File Name: 6010200101.dwg									
CAD Ver.: MicroStation V8 Scale: Not to Scale Units: English				<b>Project Development Branch SRJ/LTA</b>		Issued By: Project Development Branch on July 04, 2006			

-40-



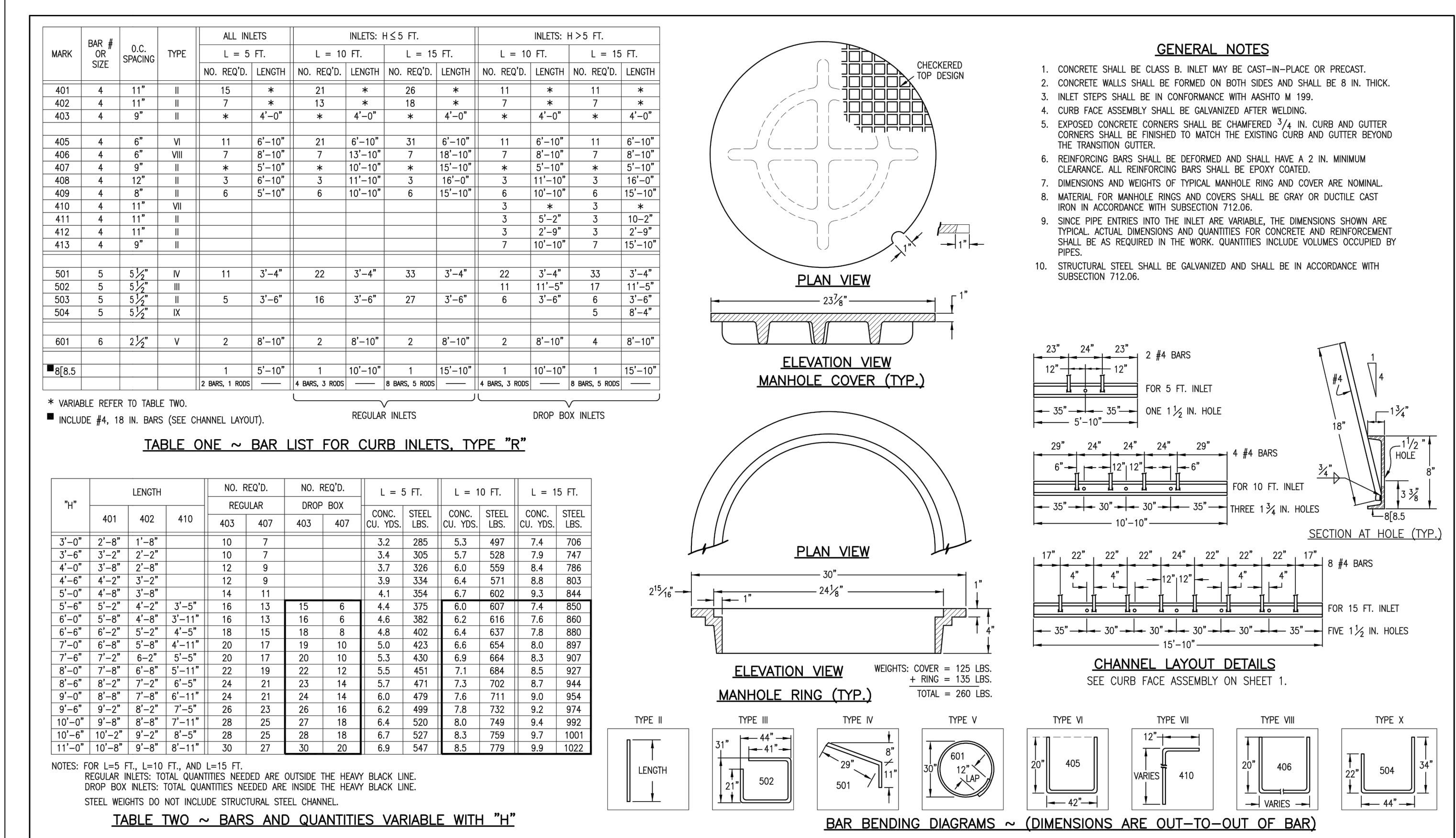
Computer File Information		Sheet Revisions		Colorado Department of Transportation		CURB INLET TYPE R		STANDARD PLAN NO.	
Creation Date: 07/04/06 Initials: SJR		Date: Comments		 4201 East Arkansas Avenue Denver, Colorado 80222 Phone: (303) 757-9083 Fax: (303) 757-9820				M-604-12	
Last Modification Date: 07/04/06 Initials: LTA									
Full Path: www.dot.state.co.us/DesignSupport/									
Drawing File Name: 6040120102.dwg									
CAD Ver.: MicroStation V8 Scale: Not to Scale Units: English				Project Development Branch SRJ/LTA		Issued By: Project Development Branch on July 04, 2006		Sheet No. 1 of 2	

-49-



<b>Computer File Information</b>		<b>Sheet Revisions</b>		<b>Colorado Department of Transportation</b>		<b>INLET, TYPE D</b>	<b>STANDARD PLAN NO.</b>
Creation Date: 07/04/06 Initials: SJR		Date: _____ Comments: _____		 4201 East Arkansas Avenue Denver, Colorado 80222 Phone: (303) 757-9083 Fax: (303) 757-9820			M-604-11
Last Modification Date: 07/04/06 Initials: LTA				<b>Project Development Branch</b> SRJ/LTA			<b>Sheet No. 1 of 1</b>
Full Path: www.dot.state.co.us/DesignSupport/							
Drawing File Name: 6040110101.dwg							
CAD Ver.: MicroStation V8 Scale: Not to Scale Units: English							

-48-



<b>Computer File Information</b>		<b>Sheet Revisions</b>		<b>Colorado Department of Transportation</b>		<b>CURB INLET TYPE R</b>		<b>STANDARD PLAN NO.</b>	
Creation Date: 07/04/06 Initials: SJR		Date: _____ Comments: _____		 4201 East Arkansas Avenue Denver, Colorado 80222 Phone: (303) 757-9083 Fax: (303) 757-9820 <b>Project Development Branch SRJ/LTA</b>		<b>M-604-12</b>		<b>Sheet No. 2 of 2</b>	
Last Modification Date: 07/04/06 Initials: LTA									
Full Path: www.dot.state.co.us/DesignSupport/									
Drawing File Name: 6040120202.dwg									
CAD Ver: MicroStation V8 Scale: Not to Scale Units: English						Issued By: Project Development Branch on July 04, 2006			

-50-

DWIRE STORAGE YARD  
 STANDARD DETAILS  
 PROJECT NO. 43-117  
 DATE: 11/16/2020  
 SCALE: 1"=10'  
 DESIGNED BY: CWN  
 DRAWN BY: CWN  
 CHECKED BY: VAS  
 SHEET 5 OF 5  
 ST05

20 BOULDER CREST SUITE 110  
 COLORADO SPRINGS, CO 80903  
 PHONE: 719.555.5485  
**CIVIL CONSULTANTS, INC.**

REVISIONS:  
 NO. DATE: BY: DESCRIPTION:

FOR AND ON BEHALF OF  
 M&S CIVIL CONSULTANTS, INC.  
 1200 N. S. 1000  
 DENVER, CO 80202  
 303.733.1600  
 1-29-21  
 PROFESSIONAL SEAL

CAUTION