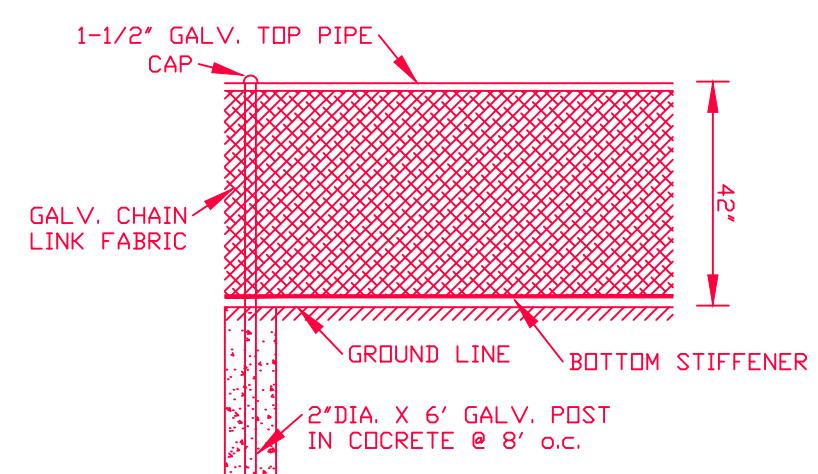
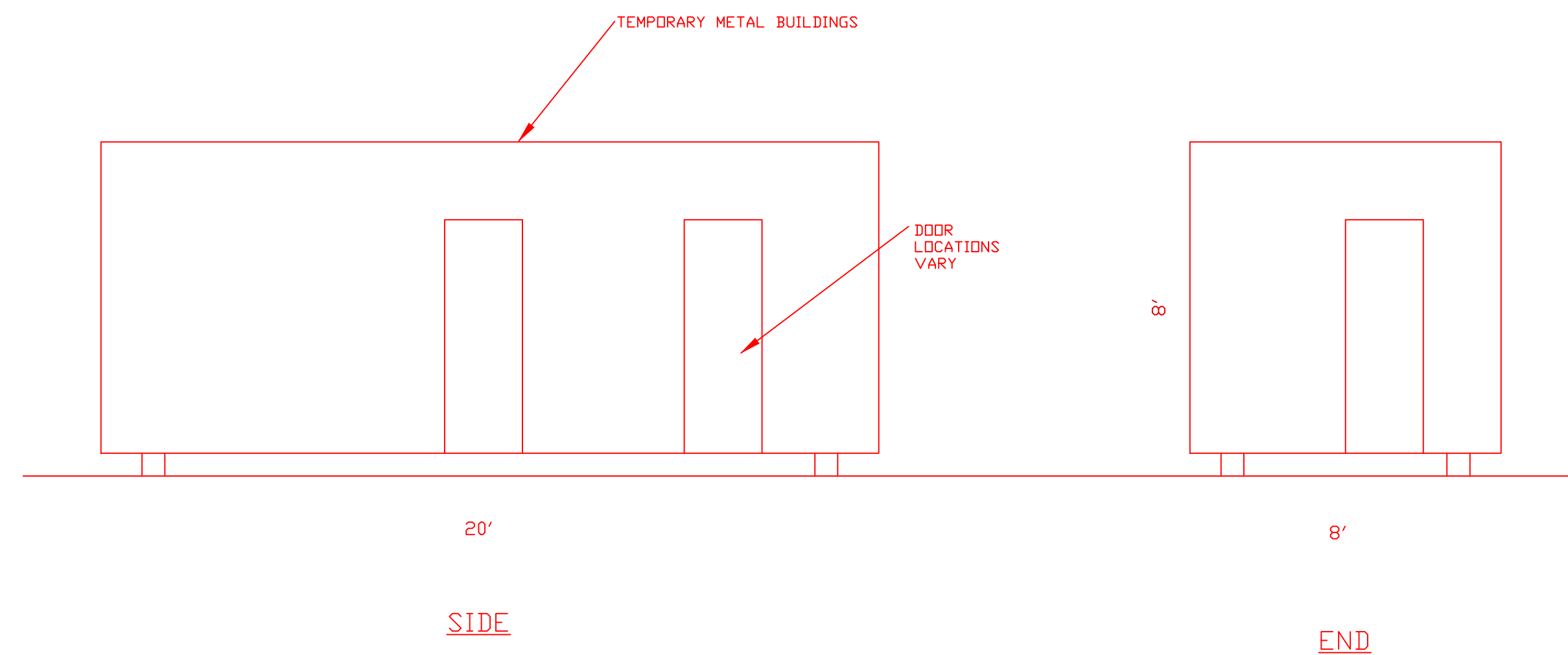


BLOCK WALL
1/2"=1'-0"



CHAIN LINK FENCE DETAIL
N.T.S.



BUILDING ELEVATIONS
1"=2'

Prepared by the office of:
Oliver E. Watts, Consulting Engineer, Inc.
614 Elkton Drive
Colorado Springs, CO 80907
(719) 593-0173
olliewatts@aol.com
Celebrating 43 years in Business

County File No:

DRAWN BY: O.E. WATTS DATE: 3-29-22 DWG. NO.: 14-4624-05 SURVEYED BY: DEV, ESV 5-20-91 THRU 2-10-22	APPROVED BY: PROJ. NO.: DWG.	REVISIONS	OLIVER E. WATTS CONSULTING ENGINEER COLORADO SPRINGS	PROJECT 3511 WEST COLORADO AVE. LOTS 22-26, BLOCK 1, EAST MANITOU EL PASO COUNTY	SHEET NAME DEVELOPMENT PLAN	SHEET NO. 2 OF 2
---	------------------------------------	-----------	--	---	---------------------------------------	---------------------------