

# ZONING EXHIBIT

Tract K, MAYBERRY, COLORADO SPRINGS FILING NO. 1

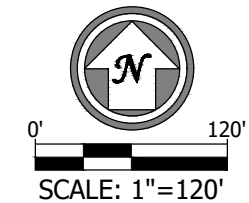
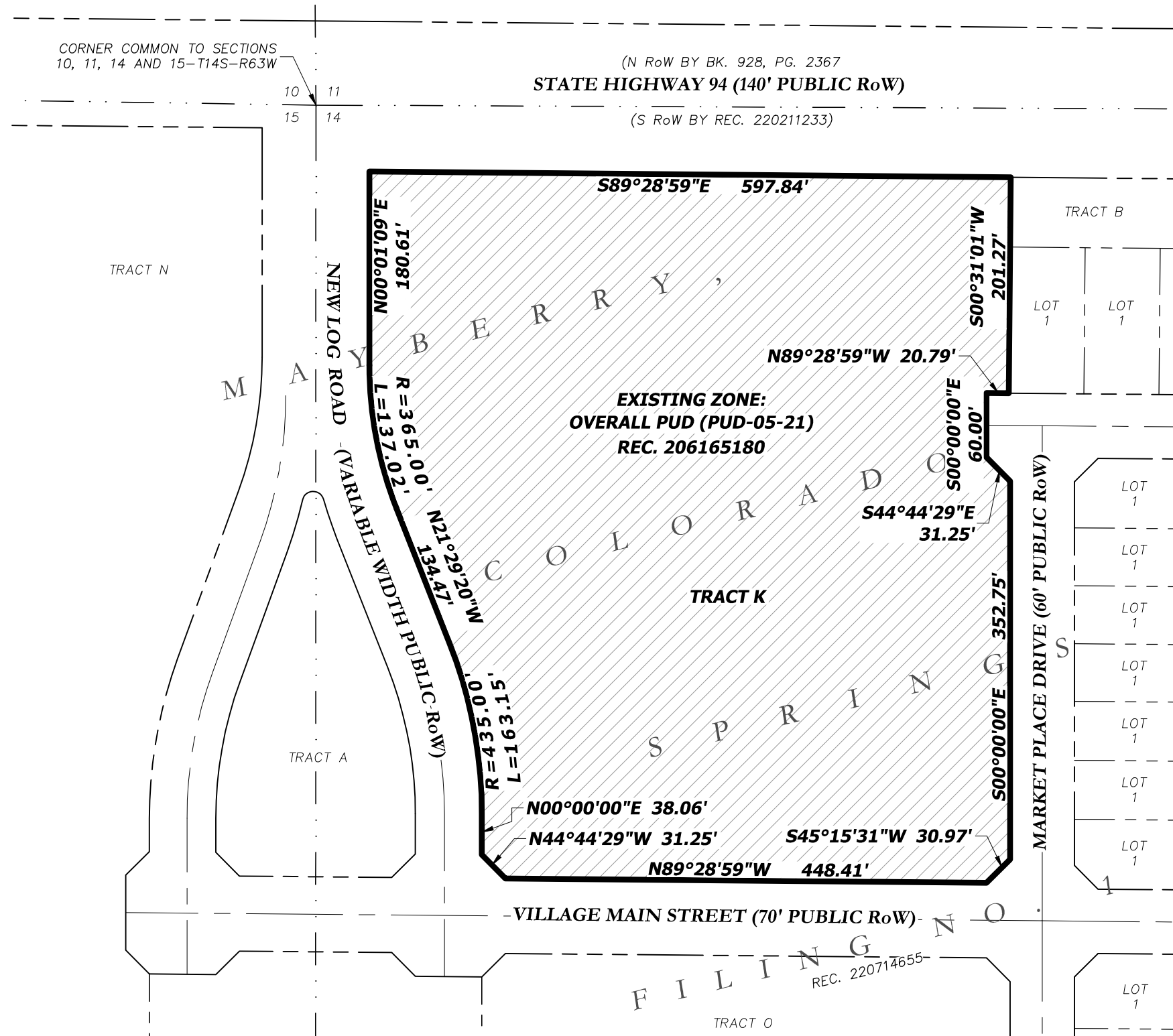
Located in the Northwest Quarter of Section 14, Township 14 South, Range 63 West of the 6th Principal Meridian | County of El Paso (Unincorporated), State of Colorado

## LAND DESCRIPTION

All of Tract K, MAYBERRY, COLORADO SPRINGS FILING NO. 1, a subdivision of land in the Northwest Quarter of Section 14, Township 14 South, Range 63 West of the 6th Principal Meridian, El Paso County, Colorado, the plat of said subdivision recorded December 28, 2020 as Reception Number 220714655 in the Office of the Clerk and Recorder of El Paso County, Colorado.

## NOTE

This map is to depict the accompanying description and is for informational purposes only. It does not represent a monumented land survey.



## ZONING EXHIBIT

REVISIONS		Orig. Issue Date: 3/17/2023	Sheet
		Drawn By: DD	1
		Checked By: CJD	of
		Project No. MC22068	1



R&R ENGINEERS-SURVEYORS, INC.  
1635 W. 13TH AVENUE, SUITE 310  
DENVER, COLORADO 80204  
303-753-6730  
www.rrengineers.com