



January 10, 2023

Mr. Brett Lewis  
Thompson Thrift Construction  
901 Wabash Ave, Suite 300  
Terre Haute, IN 47807  
Upland Flats by Watermark

**POND AS-BUILT CERTIFICATION LETTER**

To whom it may concern,

The drainage facilities for the on-site extended detention basin, also referred to as the South Pond, was installed in general conformance with the construction documents for Upland Flats by Watermark (Tract DD, Hannah Ridge at Feathergrass Filing No. 1). This pond design was approved by El Paso County on November 9, 2021. This certification is based on an as-built survey performed by Compass Surveying & Mapping, LLC. On September 15, 2022. The results are as follows:

South Pond	Design	As-Built
Pond Volume	2.137	2.129
Pond Volume (No Freeboard)	1.482	1.465
100-Year Detention Volume	1.451	1.451

Additionally, the construction of the pond outlet structure was completed in compliance with the plans.

If you have any questions, please reach out to [eric.gunderson@kimley-horn.com](mailto:eric.gunderson@kimley-horn.com).

Thank you!

Eric Gunderson, PE  
Engineer of Record  
Kimley-Horn and Associates, Inc.

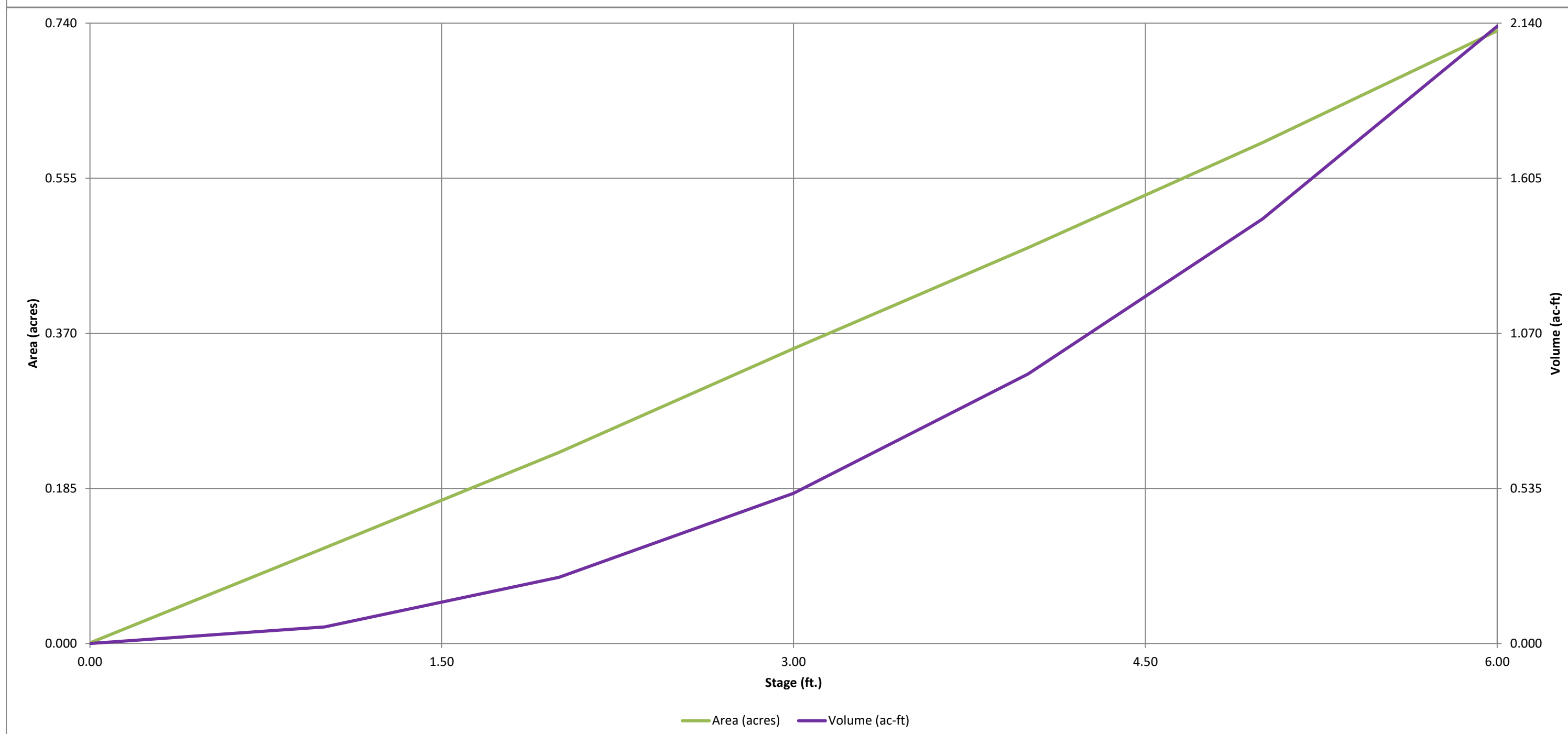
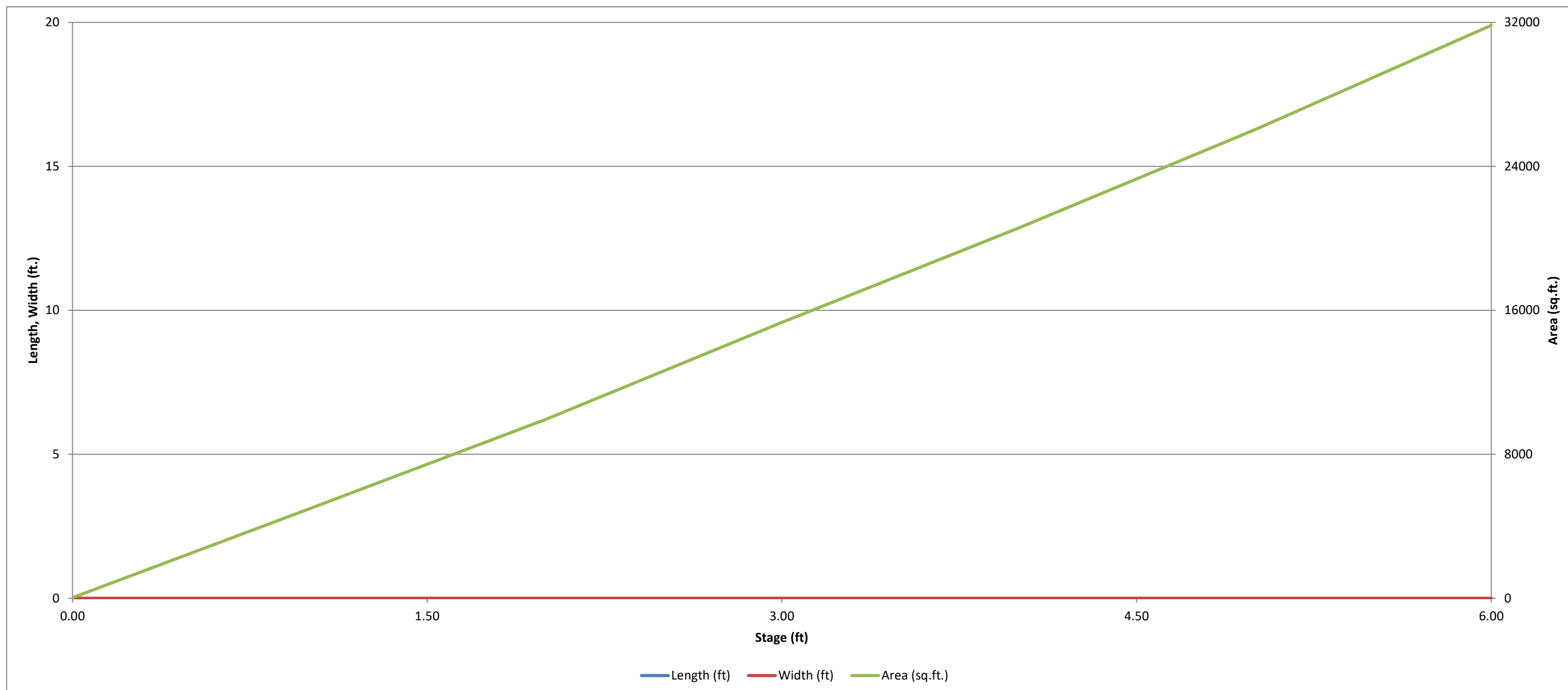


Eric Gunderson, Colorado PE 49487



# DETENTION BASIN STAGE-STORAGE TABLE BUILDER

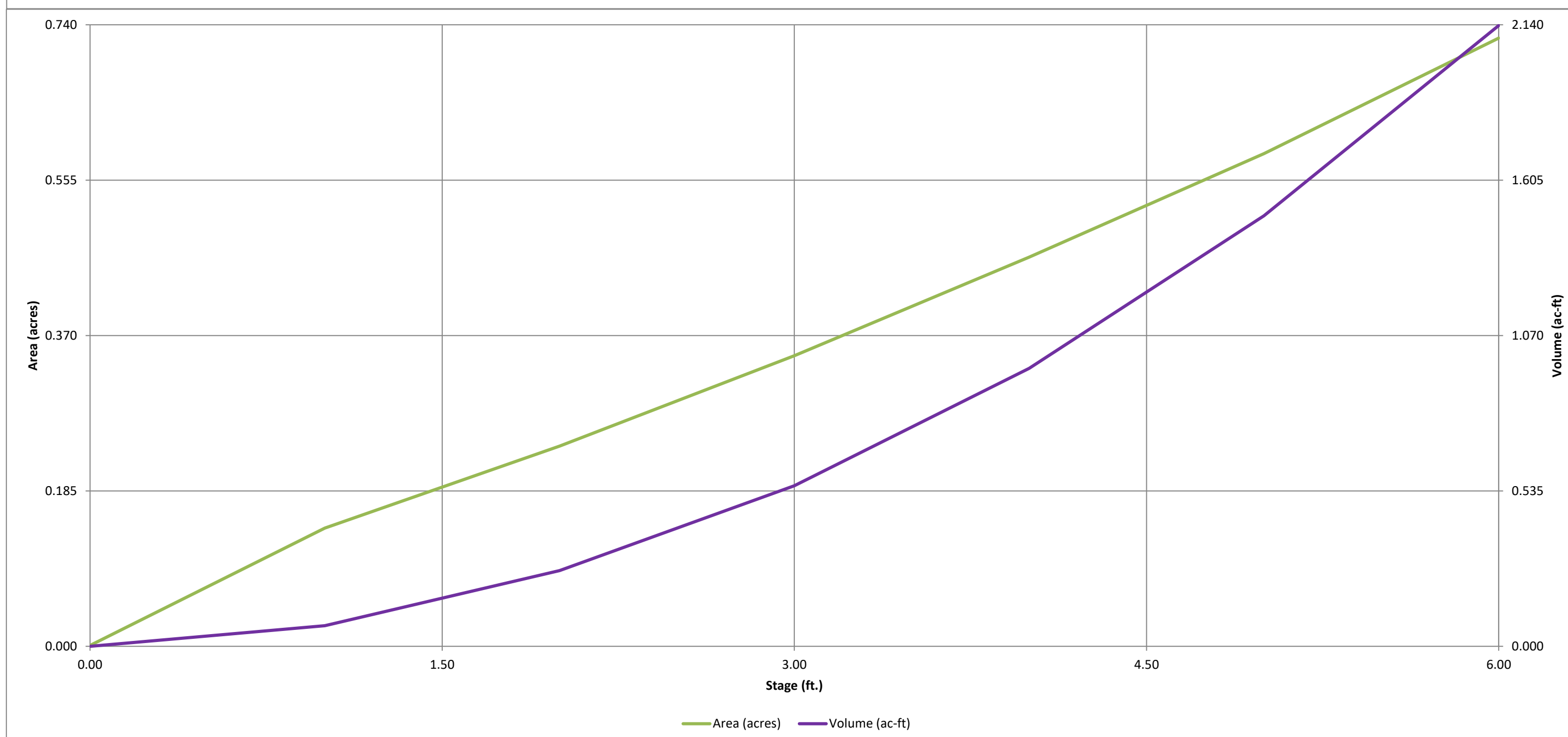
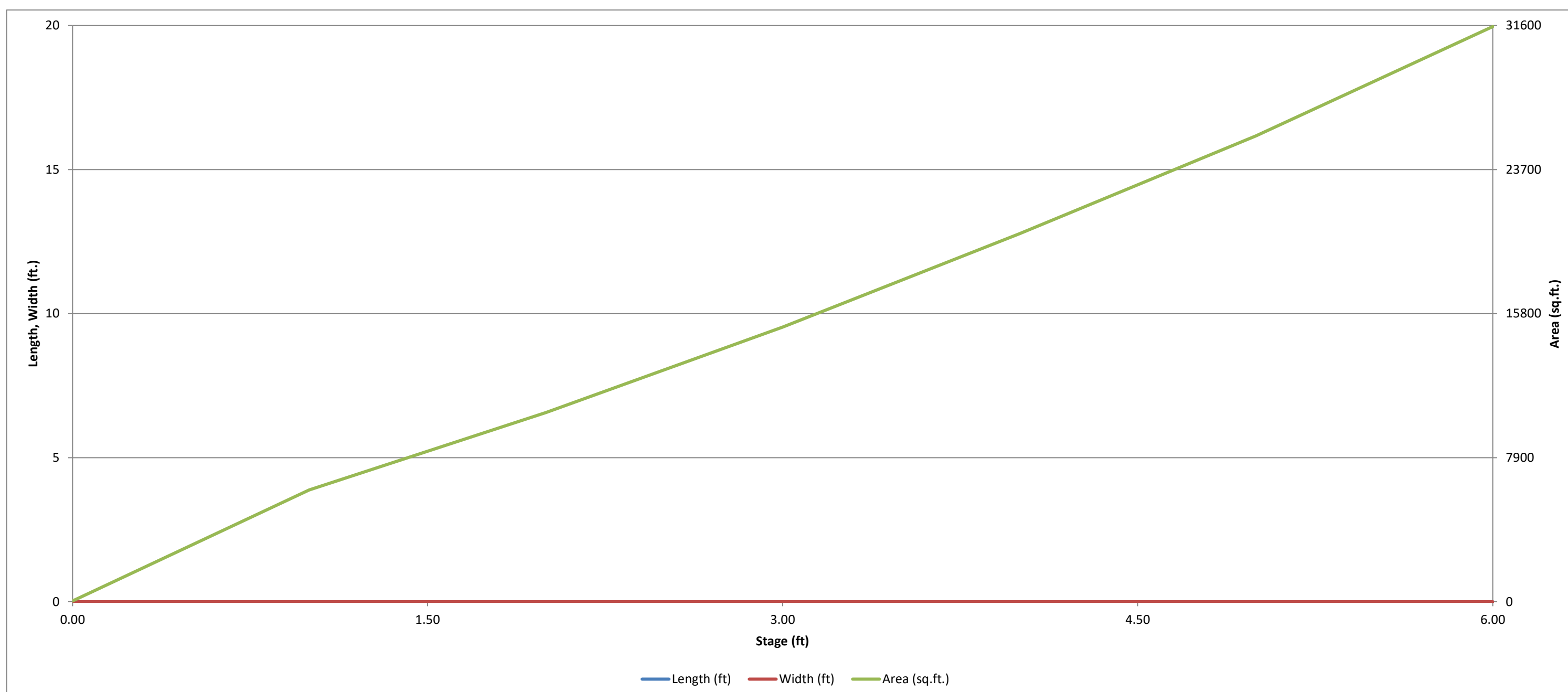
MHFD-Detention, Version 4.03 (May 2020)

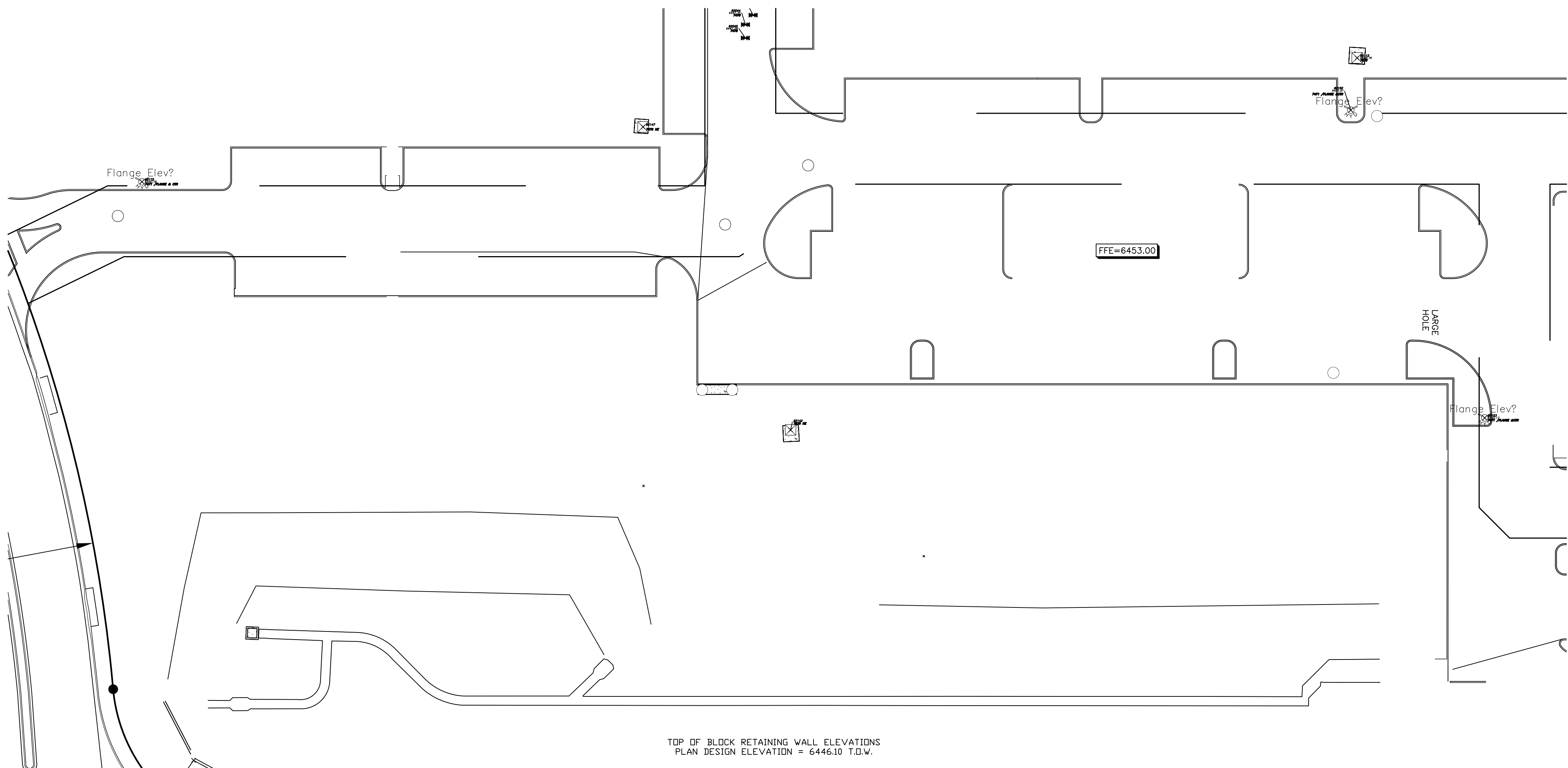




# DETENTION BASIN STAGE-STORAGE TABLE BUILDER

*MHFD-Detention, Version 4.03 (May 2020)*





TOP OF BLOCK RETAINING WALL ELEVATIONS  
 PLAN DESIGN ELEVATION = 6446.10 T.D.W.

93006 6444.07 3134 OH-1	93007 6443.93 3134 OH-1	93008 6446.04 3134 OH-1	93009 6446.04 3134 OH-1	93010 6446.04 3134 OH-1	93011 6446.05 3134 OH-1	93012 6446.05 3134 OH-1	93013 6446.02 3134 OH-1	93014 6446.02 3134 OH-1	93015 6446.04 3134 OH-1	93016 6446.01 3134 OH-1
-------------------------------	-------------------------------	-------------------------------	-------------------------------	-------------------------------	-------------------------------	-------------------------------	-------------------------------	-------------------------------	-------------------------------	-------------------------------

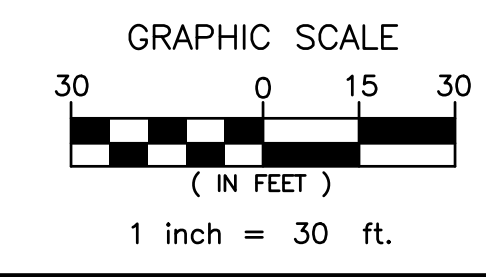
**CONSTITUTION AVENUE**  
 (120' PUBLIC ROW)  
 PLAT BOOK V-3 PAGE 169



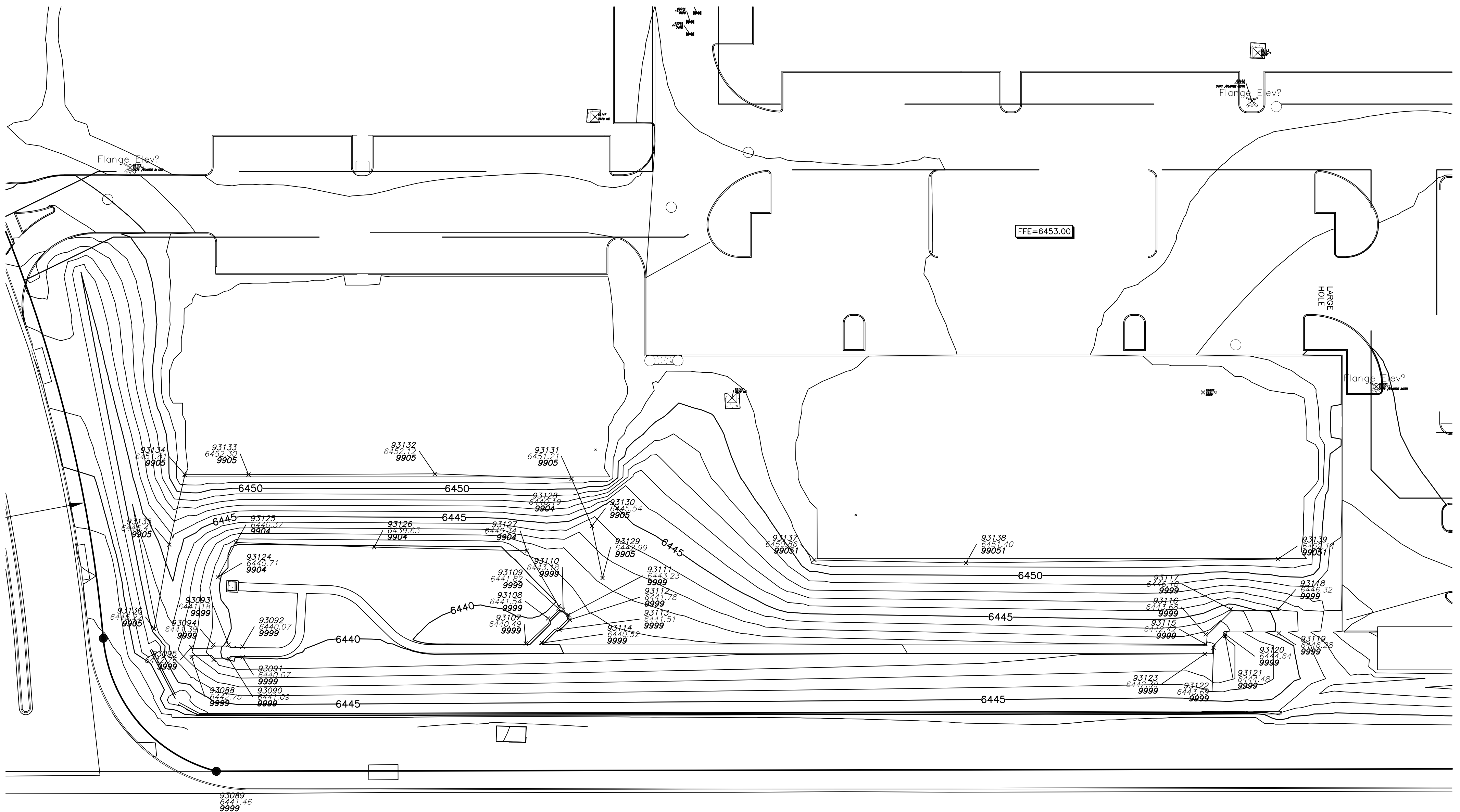
COMPASS SURVEYING & MAPPING, LLC  
 3249 WEST CAREFREE CIRCLE  
 COLORADO SPRINGS, CO 80917  
 719-354-4120  
 WWW.CSAMLLC.COM

**AS-CONSTRUCTED**  
**August 04, 2022**

UPLAND FLATS BY WATERMARK  
 CITY OF COLORADO SPRINGS,  
 EL PASO COUNTY, COLORADO

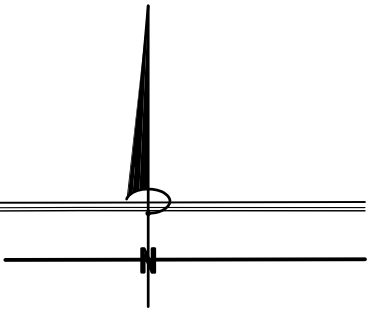


PROJECT NO.	21264
DATE:	SEPTEMBER 7, 2022
DRAWN BY:	TB
CHECKED BY:	DRH
SHEET:	1 OF 3



CONSTITUTION AVENUE

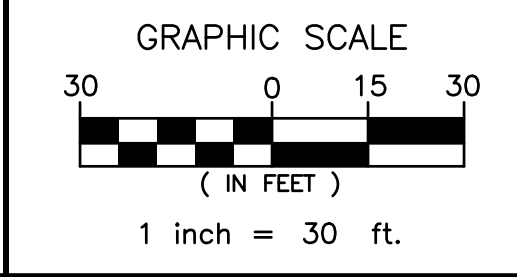
(120' PUBLIC ROW)  
PLAT BOOK V-3 PAGE 169



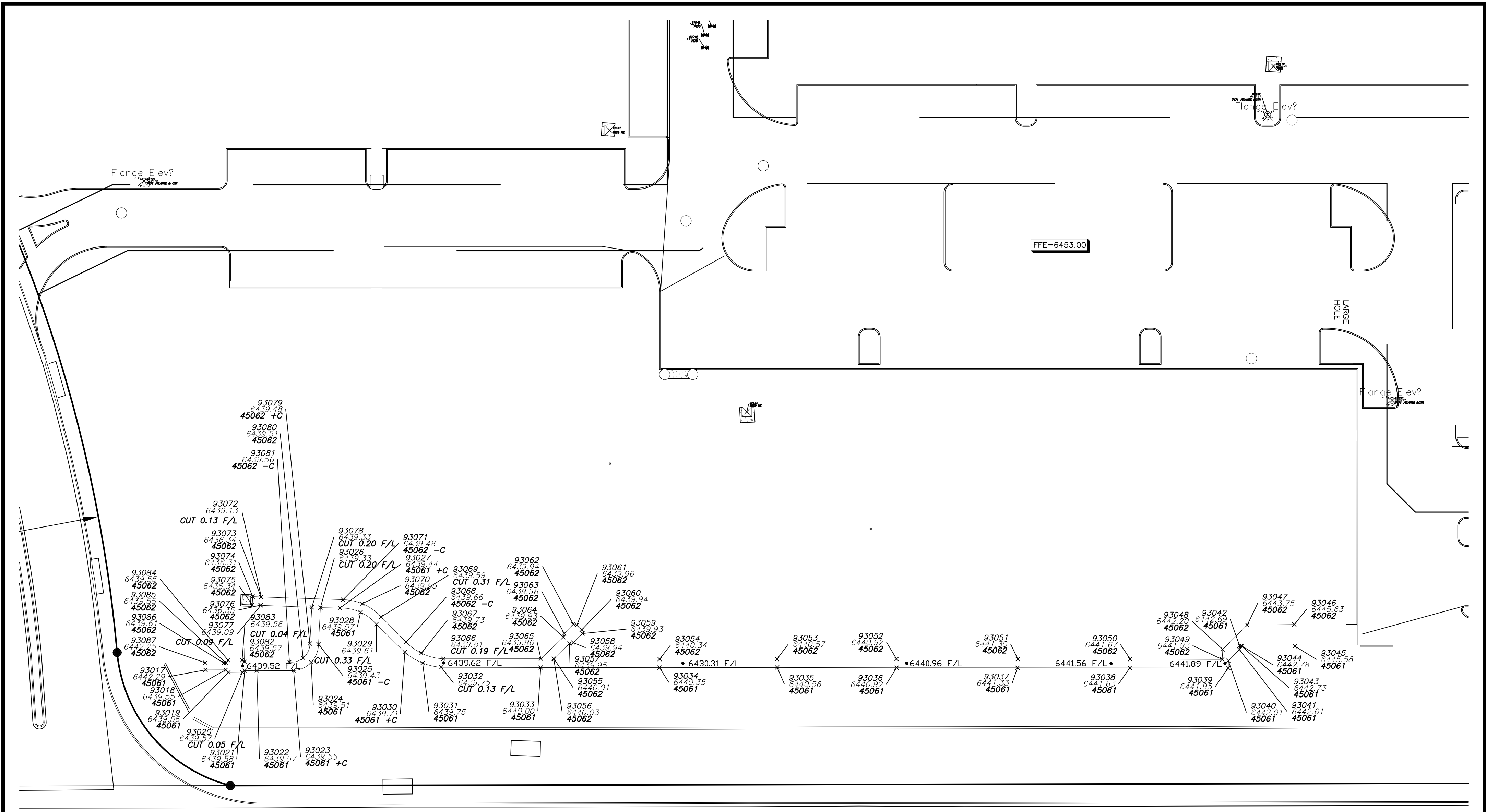

**COMPASS SURVEYING & MAPPING, LLC**  
 3249 WEST CAREFREE CIRCLE  
 COLORADO SPRINGS, CO 80917  
 719-354-4120  
 WWW.CSAMLLC.COM

**AS-CONSTRUCTED**  
**August 04, 2022**

UPLAND FLATS BY WATERMARK  
 CITY OF COLORADO SPRINGS,  
 EL PASO COUNTY, COLORADO

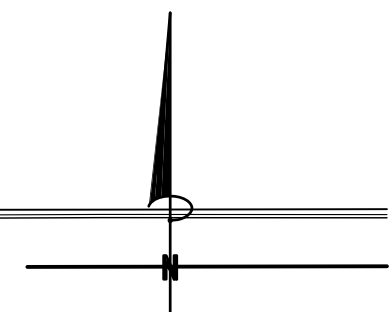


PROJECT NO.	21264
DATE:	SEPTEMBER 7, 2022
DRAWN BY:	TB
CHECKED BY:	DRH
SHEET:	2 OF 3



CONSTITUTION AVENUE

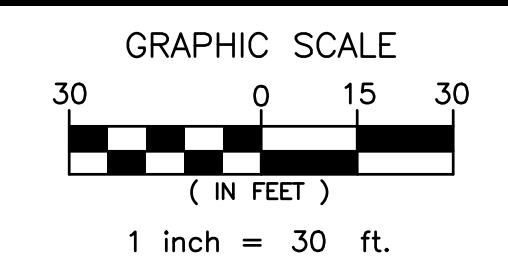
(120' PUBLIC ROW)  
PLAT BOOK V-3 PAGE 169




**COMPASS SURVEYING & MAPPING, LLC**  
 3249 WEST CAREFREE CIRCLE  
 COLORADO SPRINGS, CO 80917  
 719-354-4120  
 WWW.CSAMLLC.COM

**AS-CONSTRUCTED**  
 August 04, 2022

UPLAND FLATS BY WATERMARK  
 CITY OF COLORADO SPRINGS,  
 EL PASO COUNTY, COLORADO



PROJECT NO.	21264
DATE:	SEPTEMBER 7, 2022
DRAWN BY:	TB
CHECKED BY:	DRH
SHEET:	3 OF 3



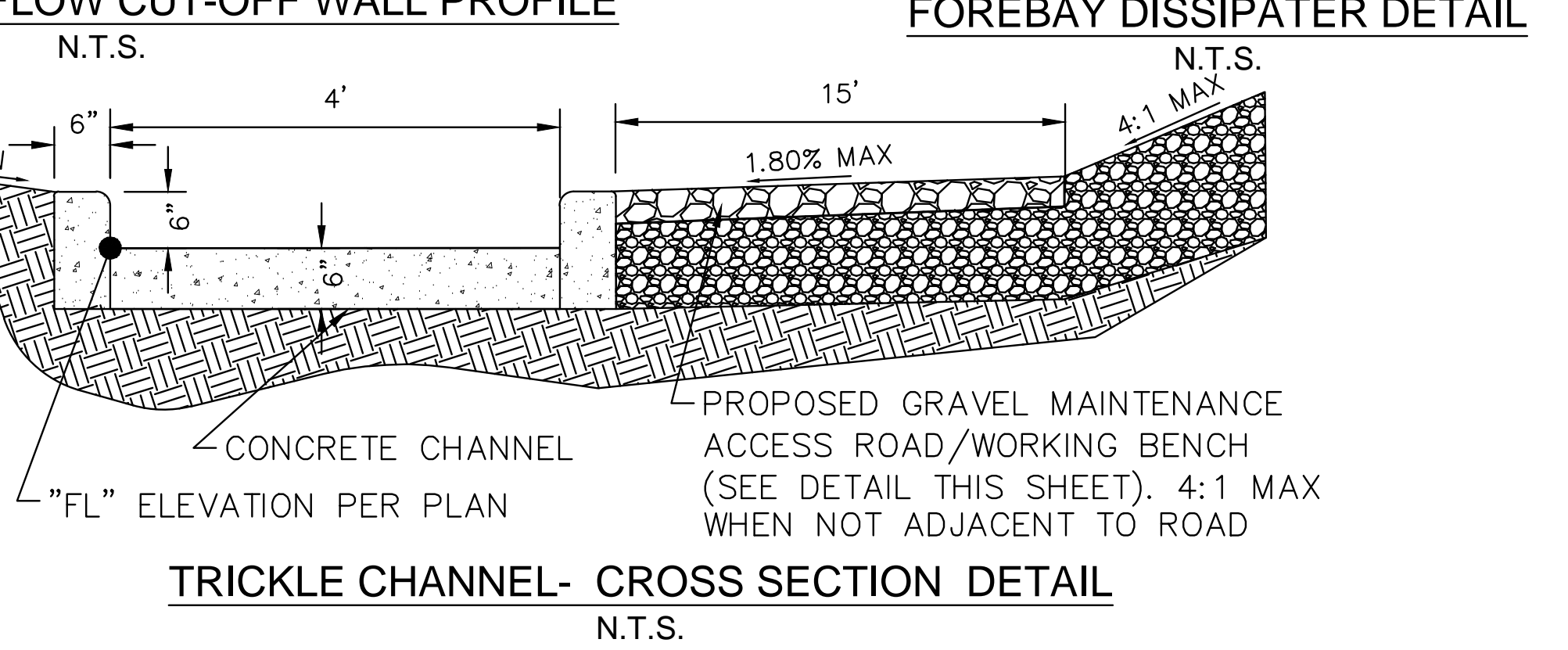
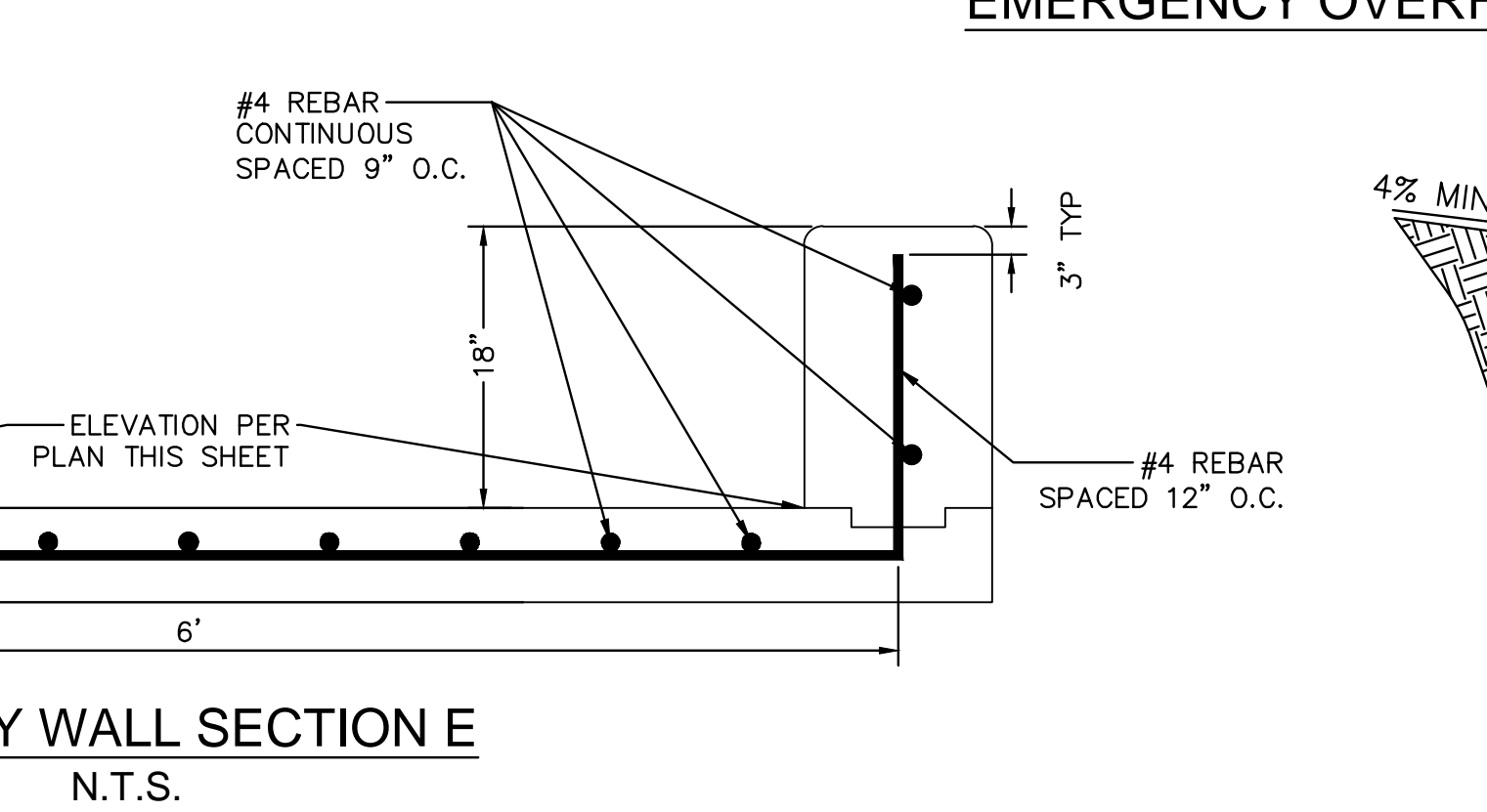
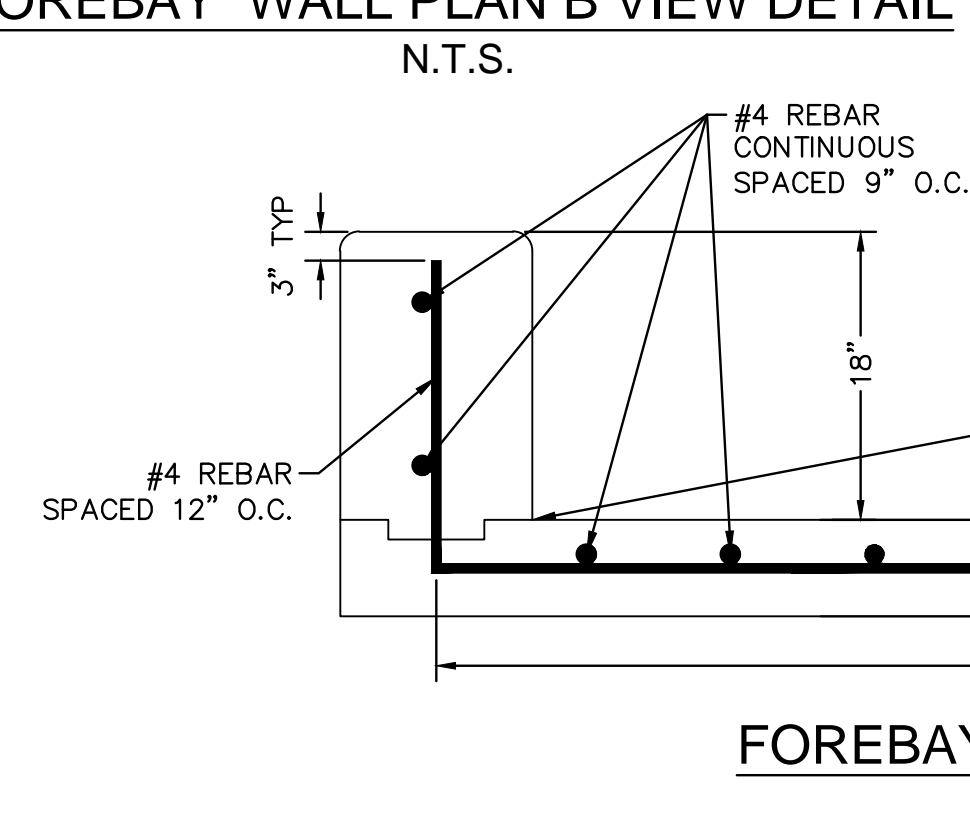
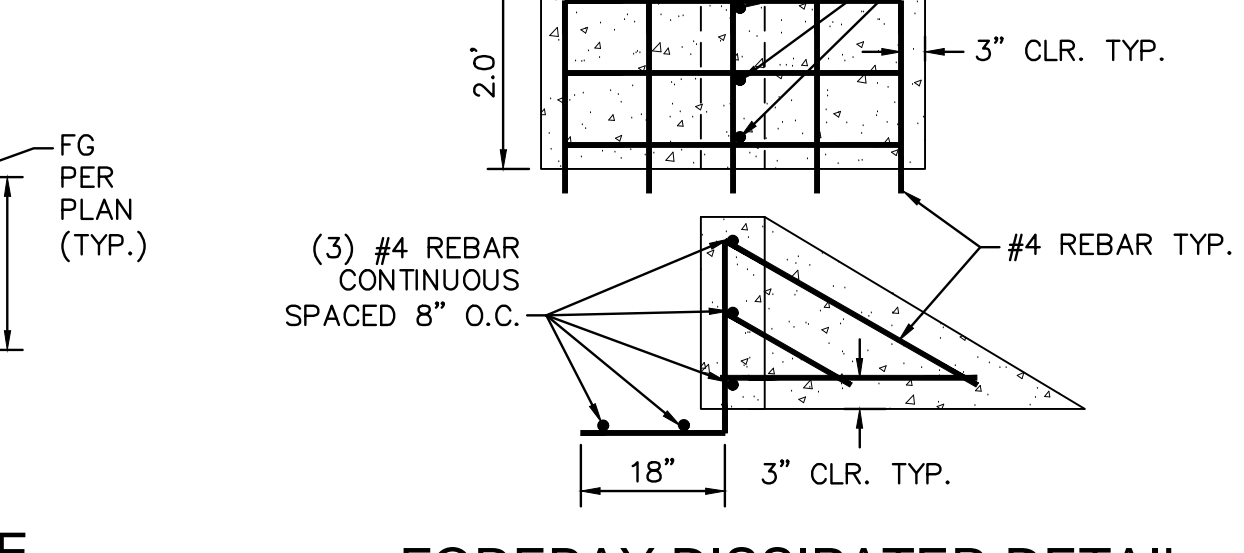
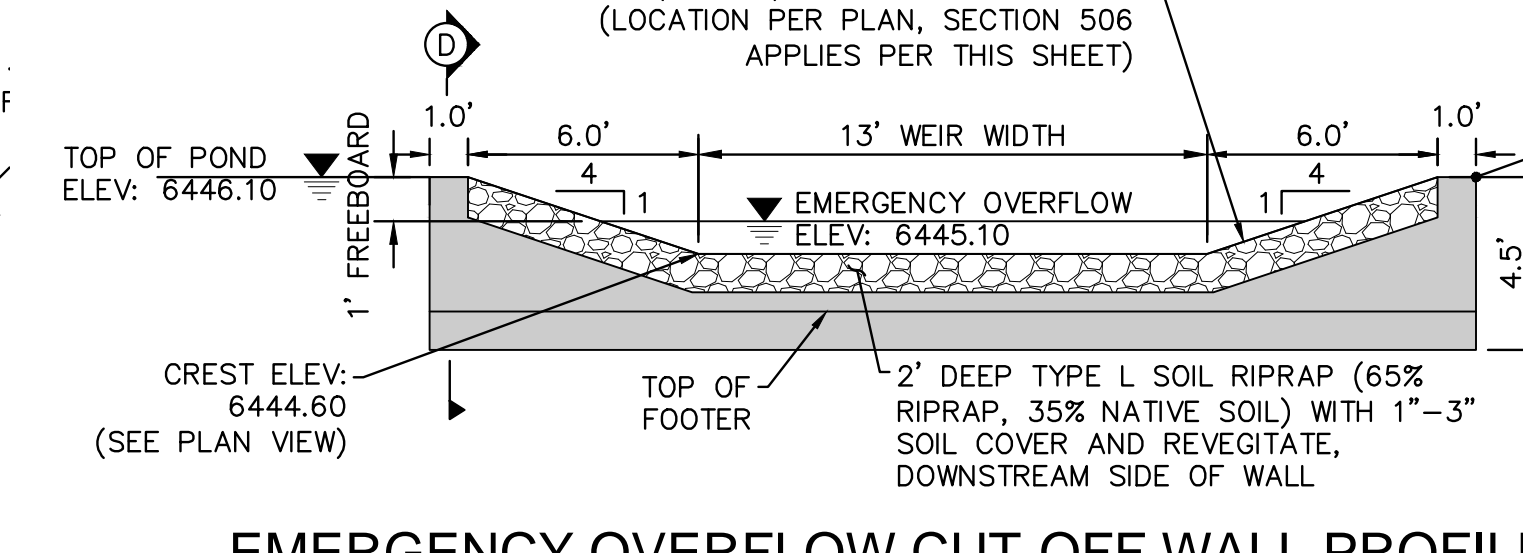
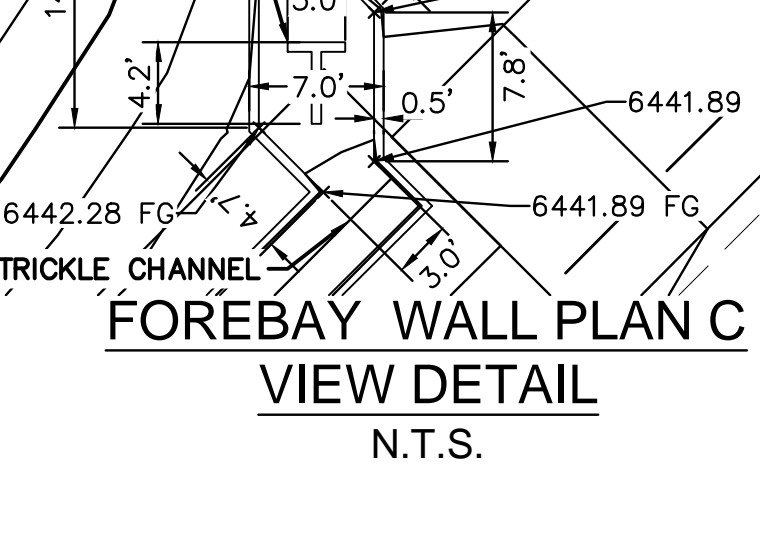
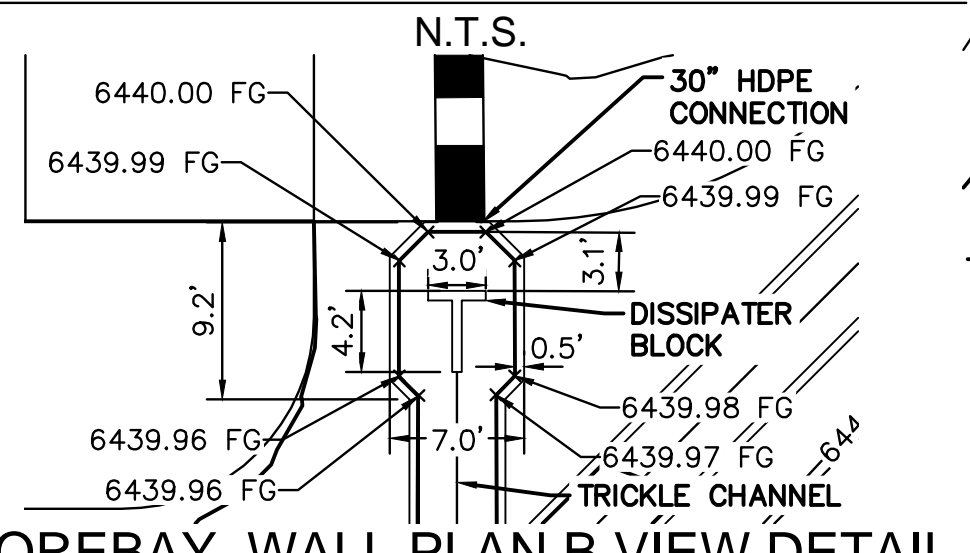
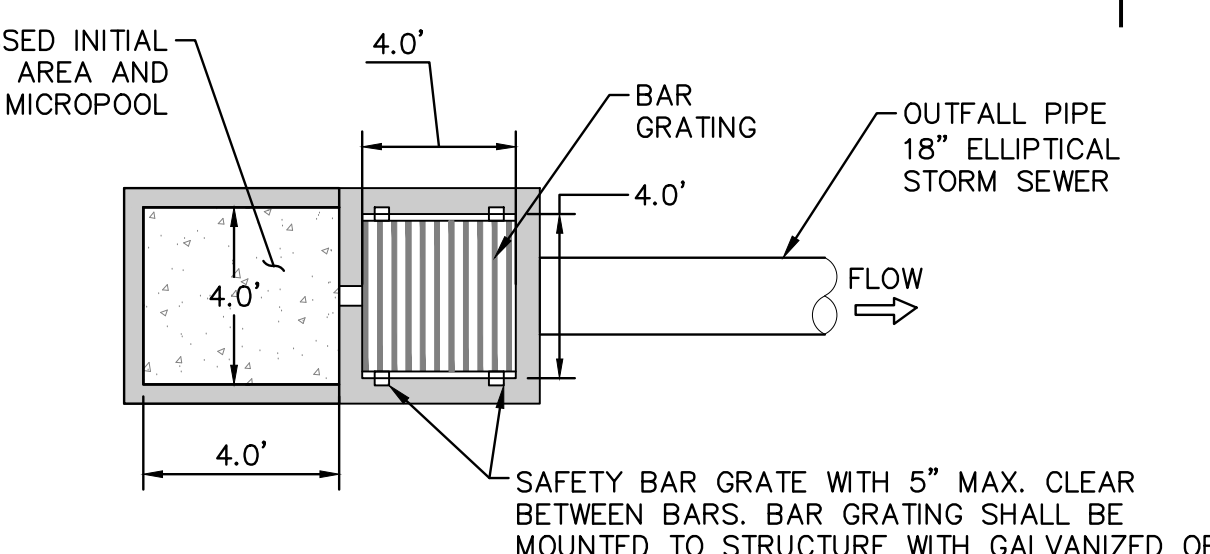
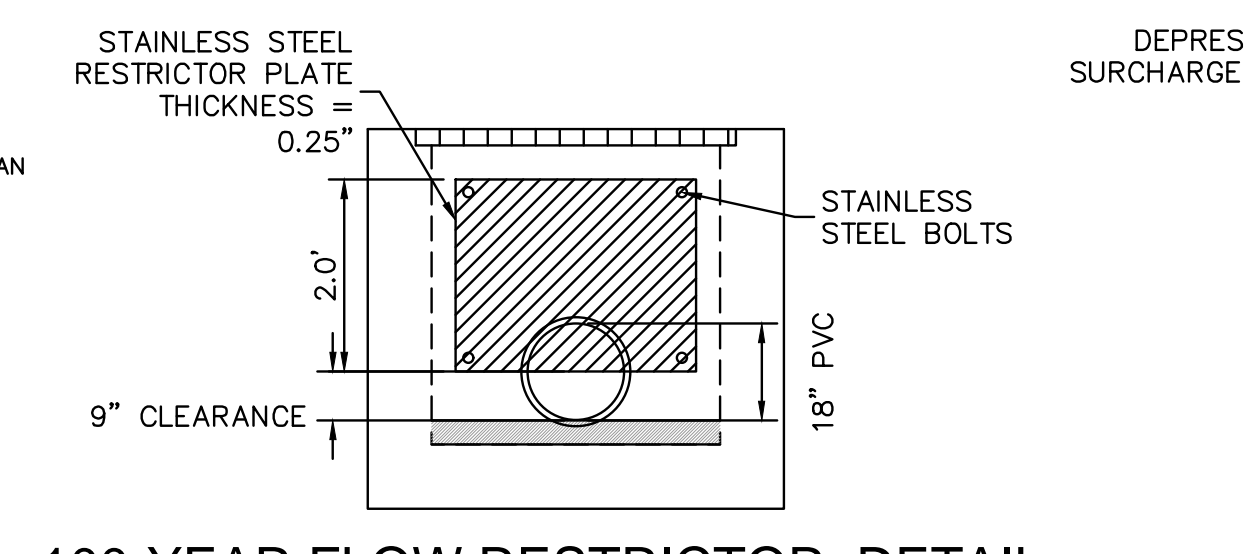
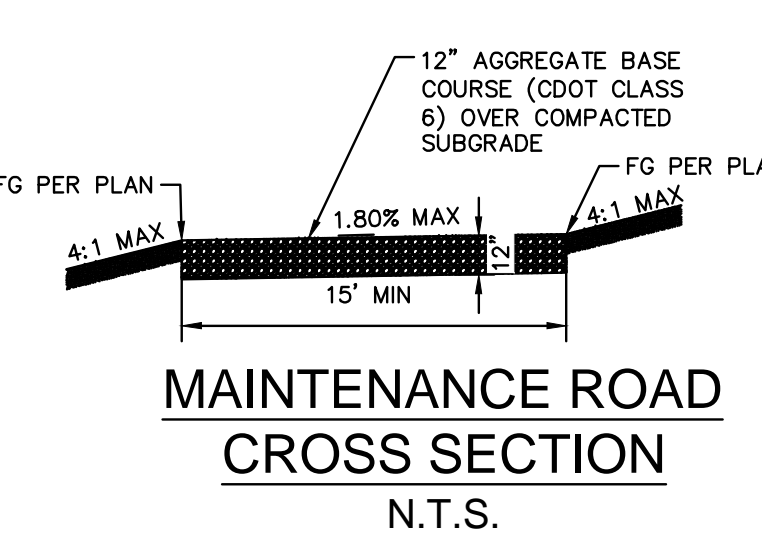
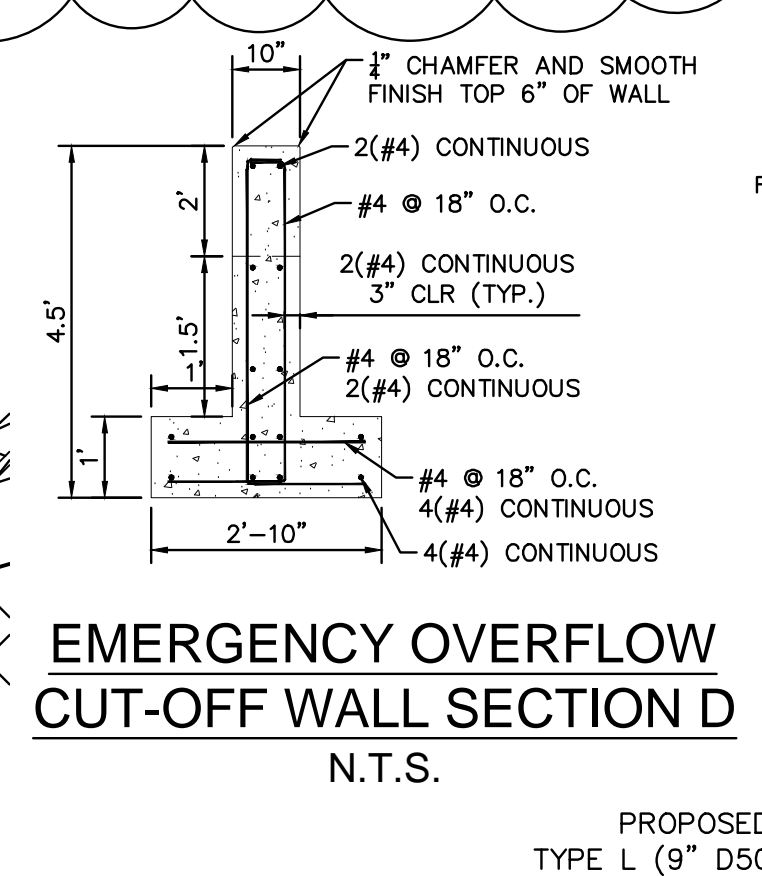
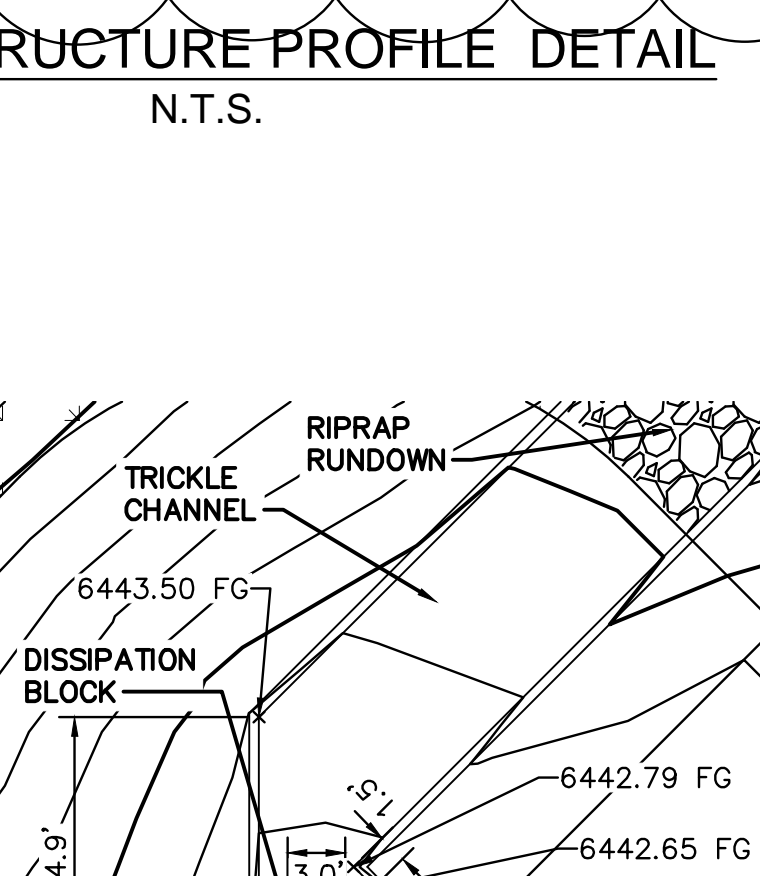
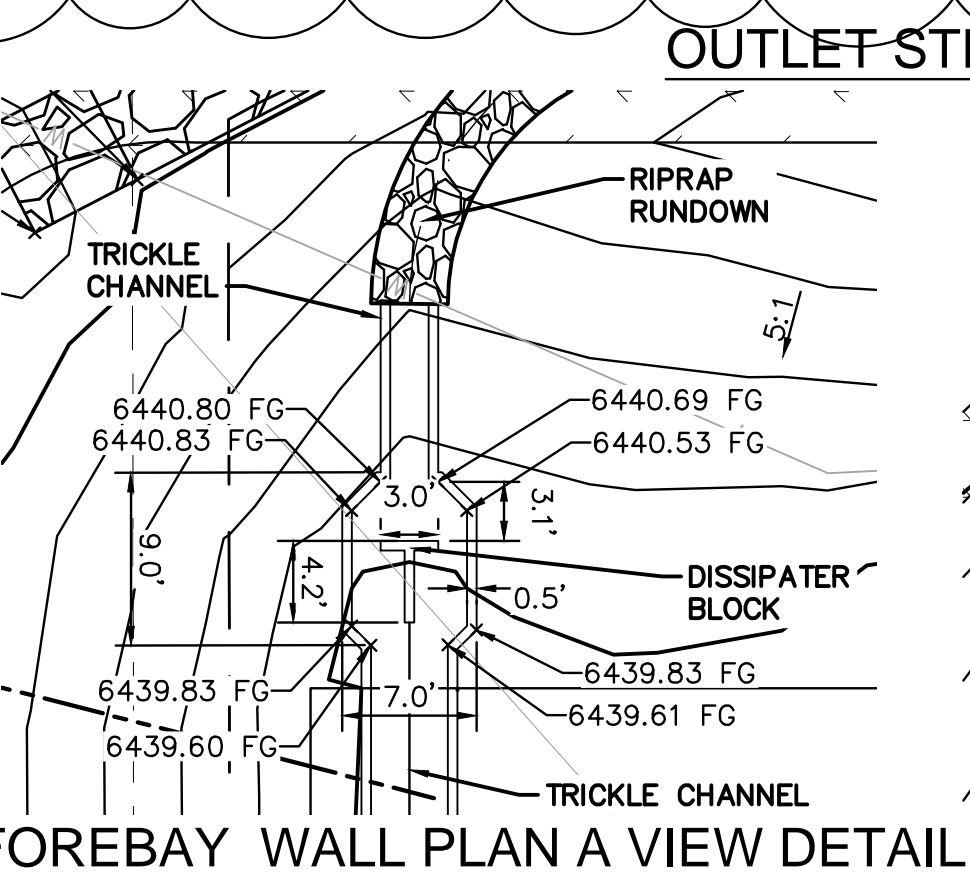
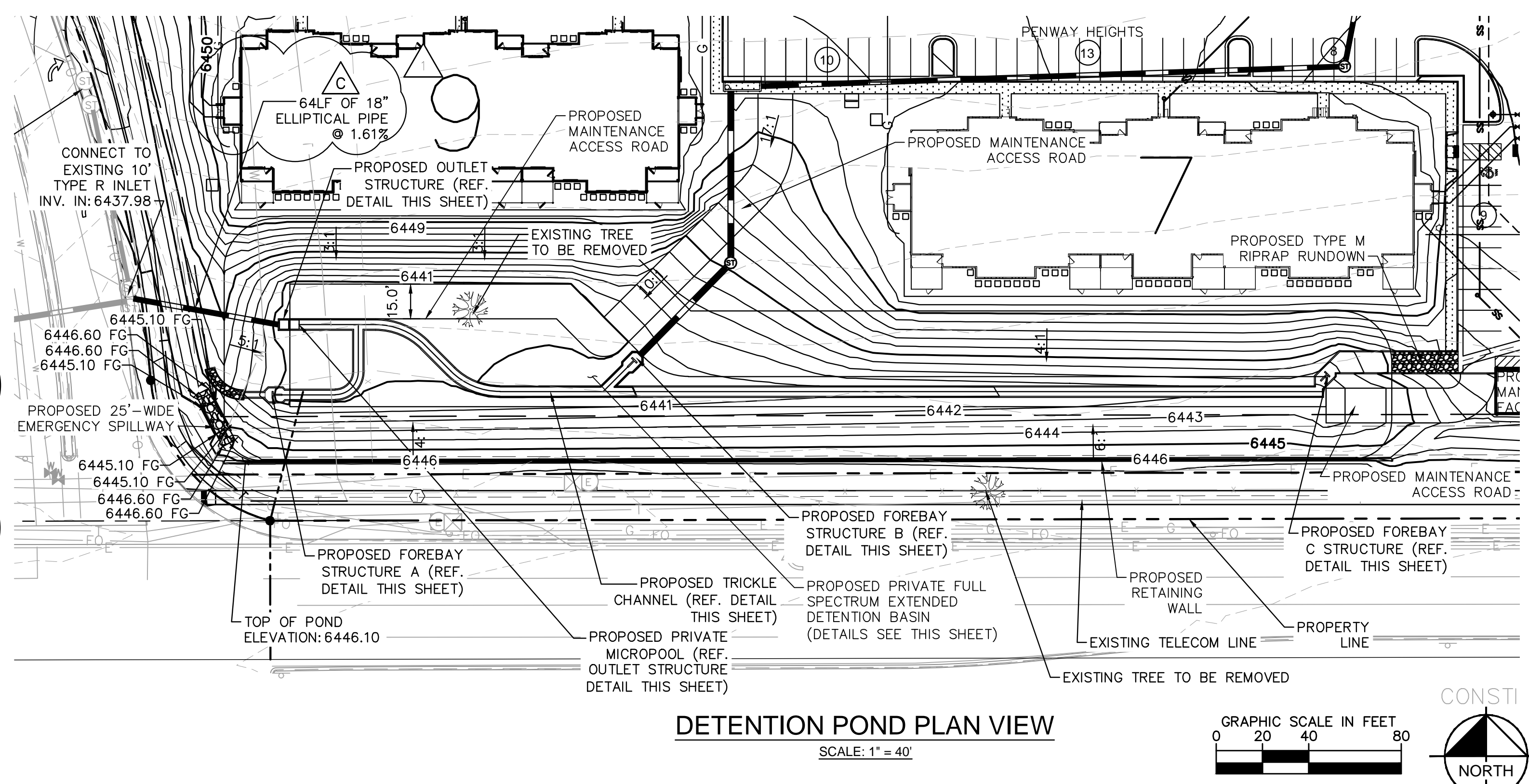
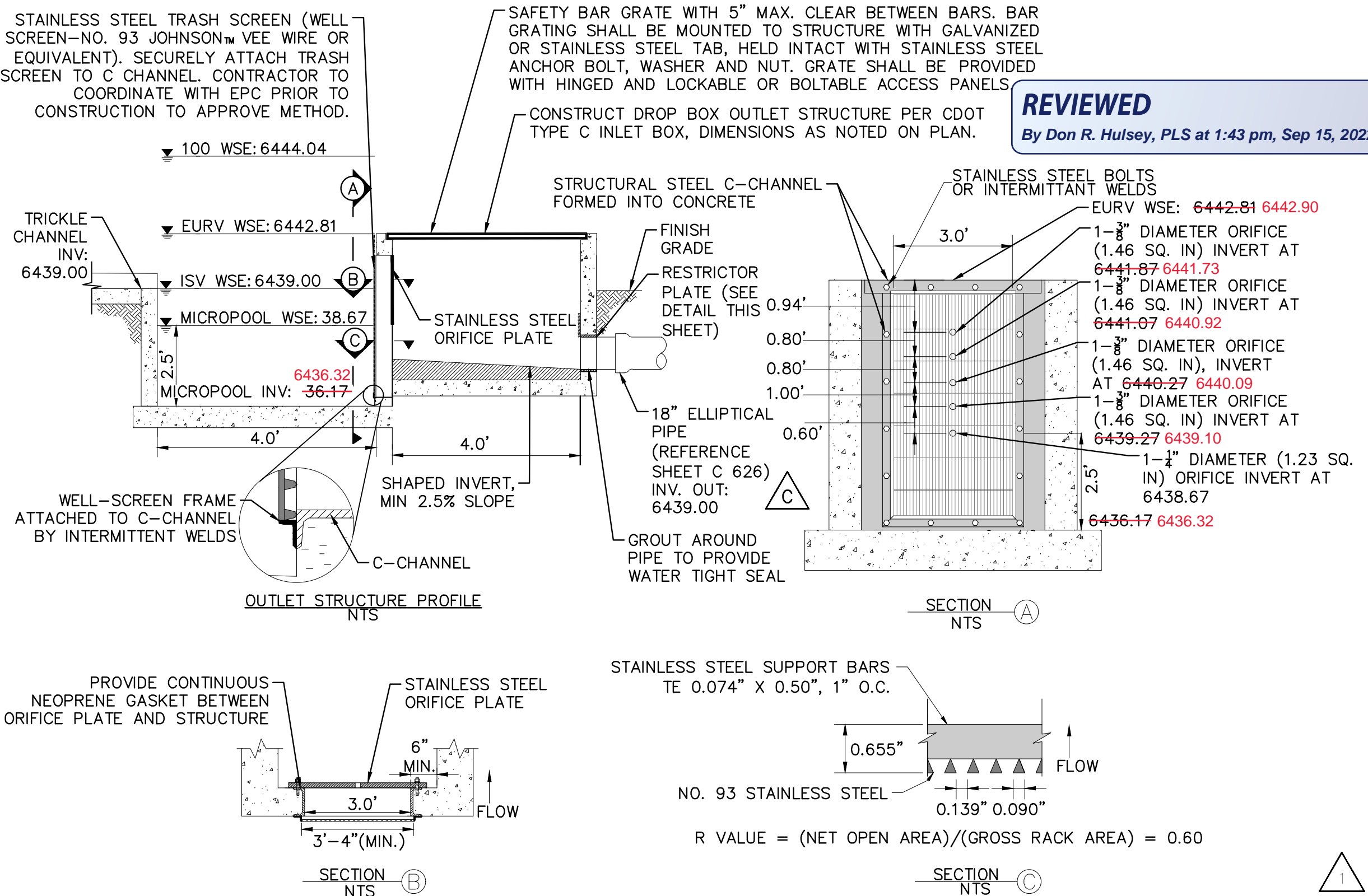


Table S06-2

Pay Item	Stone Size d50 <sup>1</sup> (Inches)	Percent of Material Smaller Than Typical Stone <sup>2</sup>	Typical Stone Dimensions <sup>3</sup> (Inches)	Typical Stone Weight <sup>4</sup> (Pounds)
Riprap 6	6	70-100	12	85
		50-70	9	35
		35-50	6	10
Riprap 9	9	70-100	15	160
		50-70	12	85
		35-50	9	35
		2-10	3	1.3
Riprap 12	12	70-100	21	440
		50-70	18	275
		35-50	12	85
		2-10	4	3
Riprap 18	18	100	30	1280
		50-70	24	650
		35-50	18	275
		2-10	6	10
Riprap 24	24	100	42	3500
		50-70	33	1700
		35-50	24	650
		2-10	9	35

<sup>1</sup>d50 = nominal stone size based on typical rock mass  
<sup>2</sup>equivalent spherical diameter based on a specific gravity = 2.5  
<sup>3</sup>Nominal stone size and total thickness of the riprap shall be as shown on the plans.

**Kimley-Horn**  
2022 KIMLEY-HORN AND ASSOCIATES, INC.  
2 North Nevada Avenue Suite 300  
Colorado Springs, Colorado 80903 (719) 453-0180

DESIGNED BY: EJG  
DRAWN BY: JAR  
CHECKED BY: EJG  
DATE: 2/17/22

**UPLAND FLATS BY WATERMARK**  
EL PASO COUNTY, COLORADO  
CONSTRUCTION DRAWING PLANS  
**POND DETAILS**

REVISION 1  
JAR 2/17/22 EJG  
ADDENDUM C  
JAR 9/17 EJG  
ADDENDUM B  
JAR 8/11 EJG  
ADDENDUM A  
JAR 6/30 EJG  
FIRST RESUBMITTAL  
JAR 5/19 EJG  
BY DATE APPROV

PROJECT NO. 096302009  
SHEET  
**C 626**

K:\DEN\_Civil\096302009\_Akers Drive\CADD\PlanSheets\CD\096302009-BMP.dwg Roberts, Jared 2/25/2022 11:12 AM