

LAZY Y ROCKIN' J RVP

SOUTHEAST QUARTER OF SECTION 7, TOWNSHIP 12 SOUTH, RANGE 63 WEST OF THE 6TH PRINCIPAL MERIDIAN, EL PASO COUNTY, COLORADO
SITE DEVELOPMENT PLAN



N.E.S. Inc.
619 N. Cascade Avenue, Suite 200
Colorado Springs, CO 80903
Tel. 719.471.0073
Fax 719.471.0267
www.nescolorado.com
© 2012. All Rights Reserved.

PLANNER / LANDSCAPE ARCHITECT

IN ASSOCIATION WITH

Lazy Y
Rockin' J RVP
SITE DEVELOPMENT PLAN /
FINAL LANDSCAPE PLAN

12960 N Peyton Hwy
Peyton, CO 80831

DATE: 9/13/2024
PROJECT MGR: A. BARLOW
PREPARED BY: J. SMITH

STAMP

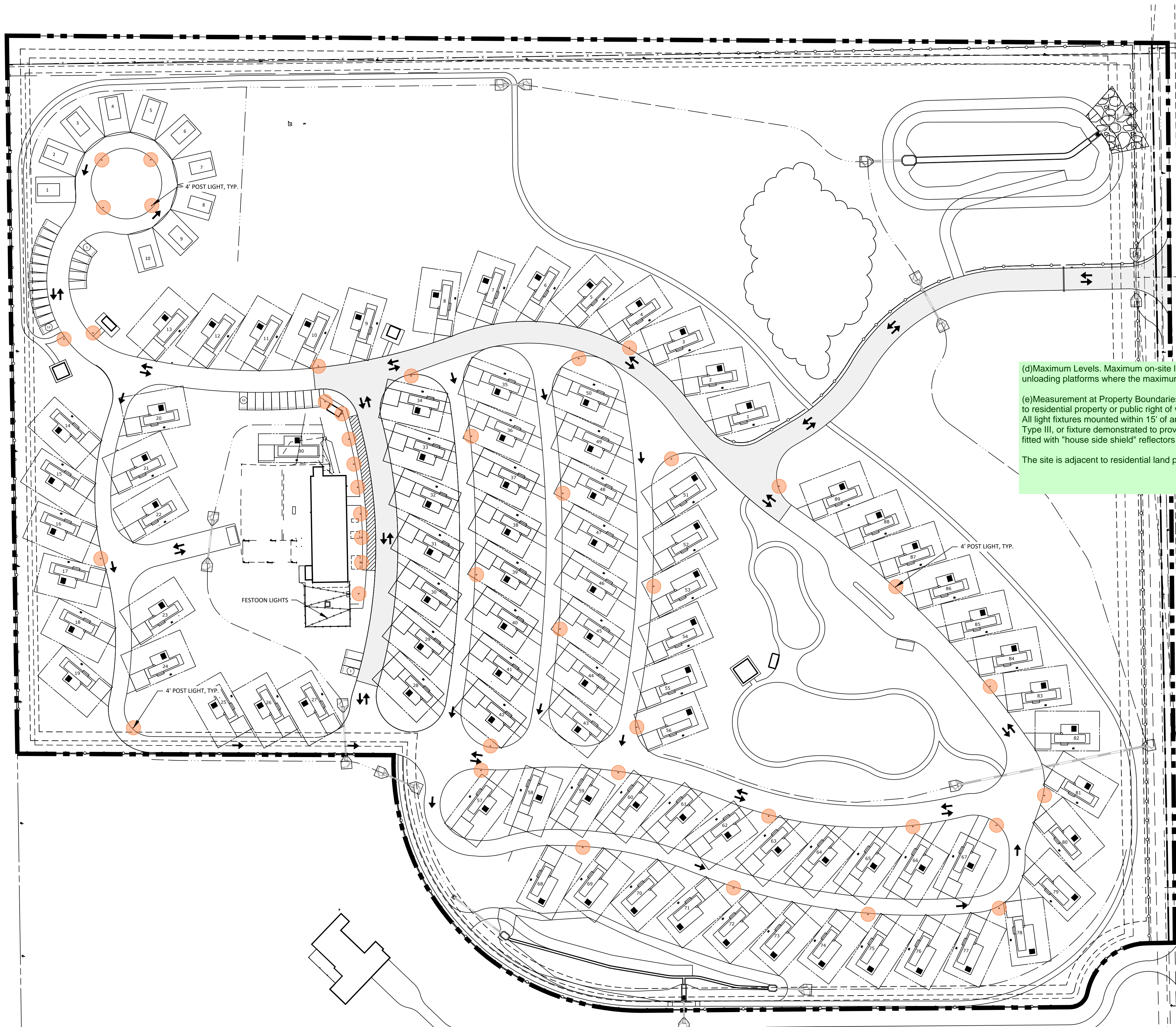
SITE
DEVELOPMENT
PLAN

DATE:	BY:	DESCRIPTION:

LIGHTING PLAN

16
16 OF 17

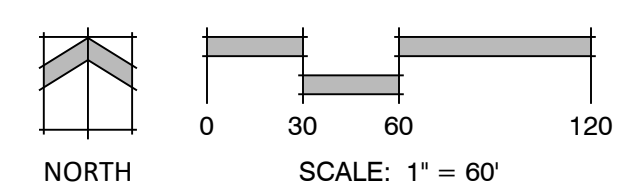
SHEET NUMBER



(d)Maximum Levels. Maximum on-site lighting levels shall not exceed 10 foot candles, except for loading and unloading platforms where the maximum lighting level shall be 20 foot candles.

(e)Measurement at Property Boundaries. Light levels measured at the property line of the development site adjacent to residential property or public right of way shall not exceed 0.1 foot candles as a direct result of the on-site lighting. All light fixtures mounted within 15' of any residential property line of the site shall be classified as IES Type II or Type III, or fixture demonstrated to provide similar distribution patterns and shielding properties. Fixtures shall be fitted with "house side shield" reflectors on the sides facing the residential property line.

The site is adjacent to residential land property - please demonstrate how lighting will not exceed 0.1 foot candles.



P:\Scott and Debra Smith\Longhorn Acres\Drawings\Planning\DP\Lazy Y RVP_SDP.dwg [LIGHTING PLAN] 9/16/2024 9:30:39 AM jsmith

