

SADDLEHORN RANCH - FILING 4

LOCATED IN SECTION 3
TOWNSHIP 13 SOUTH, RANGE 64 WEST OF THE 6TH P.M.,
EL PASO COUNTY, STATE OF COLORADO

GRADING AND EROSION CONTROL PLANS



Know what's below.
Call before you dig.

UNTIL SUCH TIME AS THESE DRAWINGS ARE APPROVED BY THE APPROPRIATE REVIEWING AGENCIES, OR ENGINEERING APPROVES THEIR USE, THESE DRAWINGS ARE DESIGNATED BY WRITTEN AUTHORIZATION.

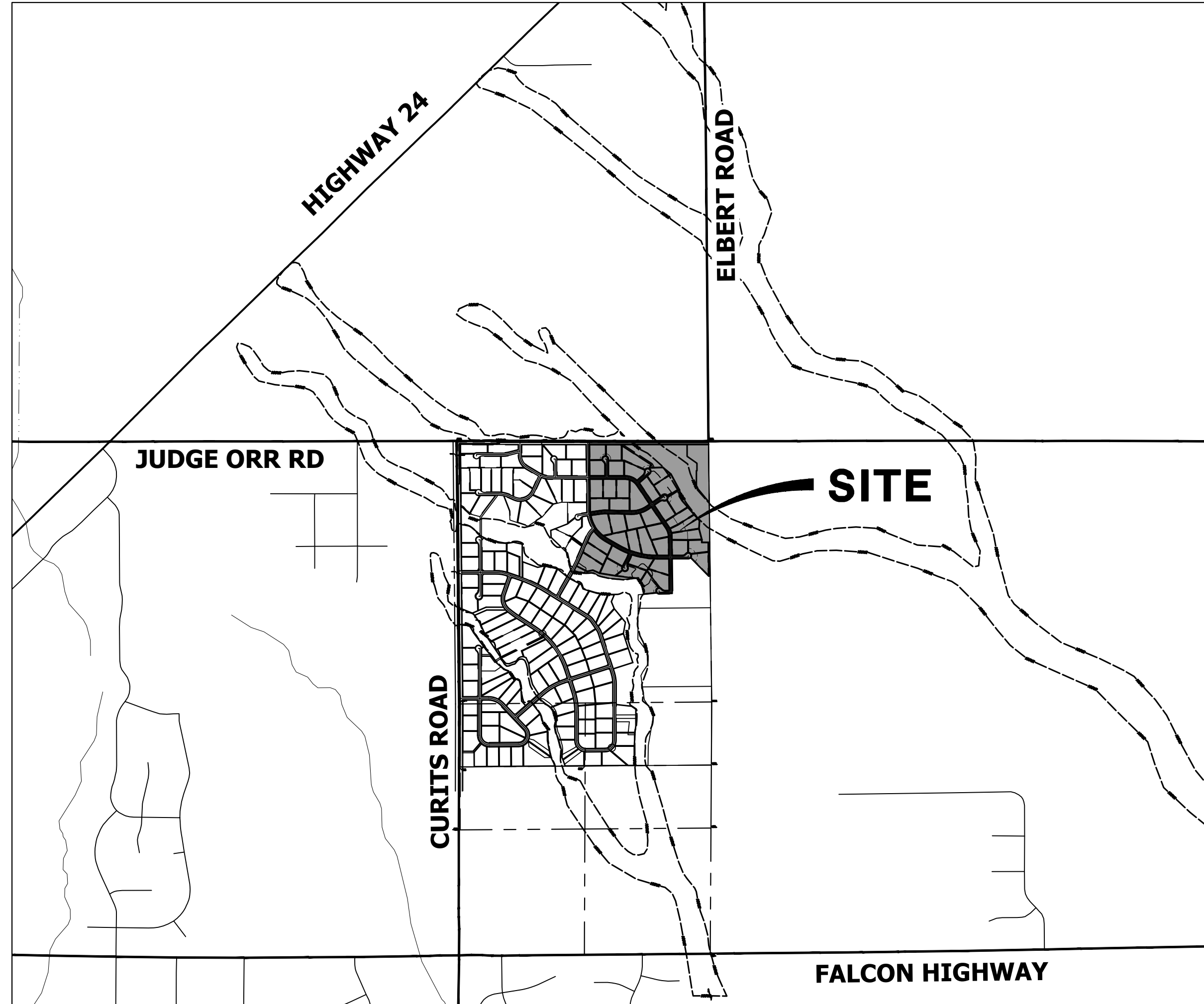
PREPARED FOR
ROI PROPERTY GROUP, LLC
2495 RIGDON STREET
NAPA, CALIFORNIA
(707) 365-6891
BRADY WILLIAMS

J.R. ENGINEERING
A Westman Company
Central 303-740-8888 • Colorado Springs 719-588-2583
Fort Collins 970-491-9888 • www.jrengineering.com

BY	DATE	REVISION

ABBREVIATIONS

AC	ACRE	INT	INTERSECTION
AD	ALGEBRAIC DIFFERENCE	INV	INVERT
AH	AHEAD	IRR	IRRIGATION
ARCH	ARCHITECT	KB	KICK (THRUST) BLOCK
ASCE	AMERICAN SOCIETY OF CIVIL ENGINEERS	LB	POUND
ASSY	ASSEMBLY	LE	LANDSCAPE EASEMENT
AVE	AVENUE	LF	LINEAR FOOT
BB	BOX BASE	LN	LANE
BK	BACK	LQMR	LETTER OF MAP REVISION
BNDY	BOUNDARY	LP	LOW POINT
BOP	BOTTOM OF PIPE	LS	LUMP SUM
BOV	BLOW OFF VALVE	LT	LEFT
BFV	BUTTERFLY VALVE	MAX	MAXIMUM DENSITY
BLVD	BULEVARD	M/D	MOISTURE
BW	BOTTOM OF WALL	MDDP	MASTER DEVELOPMENT DRAINAGE PLAN
C&G	CURB & GUTTER	MH	MANHOLE
CATV	CABLE TELEVISION	MIN	MINIMUM
CB	CATCH BASIN	MS	MOUNTABLE SIDEWALK
CBC	CONCRETE BOX CULVERT	N	NORTH
CDOT	COLORADO DEPARTMENT OF TRANSPORTATION	NRCP	NON-REINFORCED CONCRETE PIPE
CDS	CUL-DE-SAC	ODP	OFFICIAL DEVELOPMENT PLAN
CF	CUBIC FOOT	OHE	OVERHEAD ELECTRIC
CFS	CUBIC FEET PER SECOND	OHU	OVERHEAD UTILITY
CIP	COMPLETE IN PLACE	PC	POINT OF CURVATURE
CL	CENTER LINE	PCC	POINT OF COMPOUND CURVATURE
CLOMR	CONDITIONAL LETTER OF MAP REVISION	PCR	POINT OF CURB RETURN
CLR	CLEAR	PDP	PRELIMINARY DEVELOPMENT PLAN
CMP	CORRUGATED METAL PIPE	PE	PROFESSIONAL ENGINEER
CO	CLEAN OUT	PI	POINT OF INTERSECTION
COCS	CITY OF COLORADO SPRINGS	PKWY	PARKWAY
CONC	CONCRETE	PL	PROPERTY LINE
CR	CORRUGATED STEEL PIPE	PR	PROPOSED
CSP	COLORADO SPRINGS UTILITIES	PRC	POINT OF REVERSE CURVATURE
CSU	COURT	PT	POINT OF TANGENCY
CT	CONCRETE THRUST REDUCER	PV	PLUG VALVE
CTRB	BLOCK	PVC	POLYVINYL CHLORIDE
CY	CUBIC YARD	R	RADIUS
DBPS	DRAINAGE BASIN PLANNING STUDY	RCBC	REINFORCED CONCRETE BOX CULVERT
DE	DRAINAGE EASEMENT	RCP	REINFORCED CONCRETE PIPE
DIA	DIAMETER	RD	ROAD
DIP	DUCTILE IRON PIPE	ROW	RIGHT OF WAY
DR	DRIVE	RT	RIGHT
DRC	DESIGN REVIEW COMMITTEE	S	SOUTH
DU	DWELLING UNITS	STE	STEEL
DY	DAY	SAN	SANITARY SEWER
E	EAST	SF	SQUARE FOOT
EA	EACH	ST	STREET
EGL	ENERGY GRADE LINE	STA	STATION
EL	ELEVATION	STM	STORM SEWER
ELEC	ELECTRIC	SY	SQUARE YARD
EOA	EDGE OF ASPHALT	SY-IN	SQUARE YARD INCH
EPC	EL PASO COUNTY	TB	THRUST BLOCK
ERCPC	ELLIPTICAL RCP	TBC	TOP BACK OF CURB
ESMT	EASEMENT	TBW	TOP BACK OF WALK
EST	ESTIMATE	TEL	TELEPHONE
EX	EXISTING	TN	TON
FDP	FINAL DEVELOPMENT PLAN	TOA	TOP OF ASPHALT
FDR	FINAL DRAINAGE REPORT	TOB	TOP OF BOX
FES	FLARED END SECTION	TOC	TOP OF CURB OR CONCRETE
FF	FINISHED FLOOR ELEVATION	TOP	TOP OF FOUNDATION
FG	FINISHED GRADE	TOP	TOP OF PIPE
FH	FIRE HYDRANT	TW	TOP OF WALL
FL	FLOWLINE	TYP	TYPICAL
FIL	FILING	UDFCD	URBAN DRAINAGE AND FLOOD CONTROL DISTRICT
FO	FIBER OPTIC CABLE	UE	UTILITY EASEMENT
GB	GRADE BREAK	U&DE	UTILITY & DRAINAGE EASEMENT
GE	GAS EASEMENT	UGE	UNDERGROUND ELECTRIC SYSTEM
GIS	GEOGRAPHIC INFORMATION SYSTEM	VCP	VITRIFIED CLAY PIPE
GL	GAS LINE	VPC	VERTICAL POINT OF CURVATURE
GPS	GLOBAL POSITIONING SYSTEM	VPI	VERTICAL POINT OF INTERSECTION
GV	GATE VALVE	VPT	VERTICAL POINT OF TANGENCY
HBP	HOT BITUMINOUS PAVEMENT	VTC	VEHICLE TRACKING CONTROL
HC	HANDICAP	W	WEST
HDC	HIGH DEFLECTION COUPLING	WL	WATER LINE
HDPE	HIGH DENSITY POLYETHYLENE	WM	WATER MAIN
HGL	HYDRAULIC GRADE LINE	WRD	WATER RESOURCES DEPARTMENT
HMA	HOT MIX ASPHALT	WS	WATER SURFACE
HOA	HOME OWNERS ASSOCIATION	WSE	WATER SURFACE ELEVATION
HP	HIGH POINT	WTR	WATER
HR	HOUR	YR	YEAR
I	INLET		
IE	IRRIGATION EASEMENT		



VICINITY MAP
SCALE: 1" = 2000'

SHEET INDEX

1	-	COVER SHEET
2	-	LEGEND & NOTES
3	-	TYPICAL SECTIONS
4	-	OVERALL SITE MAP
5-6	-	GRADING & EROSION CONTROL PLANS
7-10	-	GRADING & EROSION CONTROL DETAILS

CONTACTS:

OWNER	GORILLA CAPITAL CO SADDLEHORN RANCH, LLC 1342 HIGH STREET EUGENE, OR 97401 P~541-393-9043
ENGINEER/SURVEYOR	JR ENGINEERING, LLC ATTN: BRYAN LAW 5475 TECH CENTER DRIVE, SUITE 235 COLORADO SPRINGS, CO 80919 P~(303) 267-6254
FIRE PROTECTION DISTRICT	FALCON FIRE PROTECTION 12072 ROYAL COUNTY DOWN ROAD FALCON, CO 80831 P~(719) 495-4050
DISTRICT	SADDLEHORN RANCH METRO DISTRICT



BENCHMARK:

THE VERTICAL DATUM IS BASED OFF AN OPUS SOLUTION RAN ON CONTROL POINT #100 (NO. 4 REBAR) AND IS ADJUSTED TO NGVD 1929, ELEVATION 6754.61.

BASIS OF BEARINGS:

THE WEST LINE OF SECTION 3, T3S, R64W, 6TH P.M., MONUMENTED BY A 3-1/4" ALUMINUM CAP STAMPED "PLS 17496" IN A RANGE BOX AT THE NORTHWEST CORNER OF SECTION 3 AND A NO. 8 REBAR IN A RANGE BOX AT THE SOUTHWEST CORNER OF SECTION 3, BEARING N00°32'28"W AS REFERENCED TO COLORADO STATE PLANE CENTRAL ZONE.

THE LOCATIONS OF EXISTING ABOVE GROUND AND UNDERGROUND UTILITIES ARE SHOWN IN AN APPROXIMATE WAY ONLY. THE CONTRACTOR SHALL DETERMINE THE EXACT LOCATION OF ALL EXISTING UTILITIES BEFORE COMMENCING WORK. THE CONTRACTOR SHALL BE FULLY RESPONSIBLE FOR ANY AND ALL DAMAGES WHICH MIGHT BE CAUSED BY HIS FAILURE TO EXACTLY LOCATE AND PRESERVE ANY AND ALL ABOVE GROUND AND UNDERGROUND UTILITIES.

Please upload current corrected version of the GEC Plan. V2 was not updated or corrected from V1. See comment on GEC V1

Unresolved - dotschoenheit
01/08/2024 5:00:12 PM

PCD FILE NO. XXX-XX-XXX

OWNER/DEVELOPER STATEMENT

I, THE OWNER/DEVELOPER HAVE READ AND WILL COMPLY WITH THE REQUIREMENTS OF THE GRADING AND EROSION CONTROL PLAN.

JOHN HELMICK
GORILLA CAPITAL CO SADDLEHORN RANCH, LLC
1342 HIGH STREET
EUGENE, OR 97401

EL PASO COUNTY STATEMENT

COUNTY PLAN REVIEW IS PROVIDED ONLY FOR GENERAL CONFORMANCE WITH COUNTY DESIGN CRITERIA. THE COUNTY IS NOT RESPONSIBLE FOR THE ACCURACY AND ADEQUACY OF THE DESIGN, DIMENSIONS, AND/OR ELEVATIONS WHICH SHALL BE CONFIRMED AT THE JOB SITE. THE COUNTY THROUGH THE APPROVAL OF THIS DOCUMENT ASSUMES NO RESPONSIBILITY FOR COMPLETENESS AND/OR ACCURACY OF THIS DOCUMENT.

FILED IN ACCORDANCE WITH THE REQUIREMENTS OF THE EL PASO COUNTY LAND DEVELOPMENT CODE, DRAINAGE CRITERIA MANUAL, VOLUMES 1 AND 2, AND ENGINEERING CRITERIA MANUAL AS AMENDED.

IN ACCORDANCE WITH ECM SECTION 1.12, THESE CONSTRUCTION DOCUMENTS WILL BE VALID FOR CONSTRUCTION FOR A PERIOD OF 2 YEARS FROM THE DATE SIGNED BY THE EL PASO COUNTY ENGINEER. IF CONSTRUCTION HAS NOT STARTED WITHIN THOSE 2 YEARS, THE PLANS WILL NEED TO BE RESUBMITTED FOR APPROVAL, INCLUDING PAYMENT OF REVIEW FEES AT THE PLANNING AND COMMUNITY DEVELOPMENT DIRECTORS DISCRETION.

JOSHUA PALMER, P.E. _____ DATE _____
COUNTY ENGINEER/ECM ADMINISTRATOR

ENGINEER'S STATEMENT

THIS GRADING AND EROSION CONTROL PLAN WAS PREPARED UNDER MY DIRECTION AND SUPERVISION AND IS CORRECT TO THE BEST OF MY KNOWLEDGE AND BELIEF. SAID PLAN HAS BEEN PREPARED ACCORDING TO THE CRITERIA ESTABLISHED BY THE COUNTY FOR GRADING AND EROSION CONTROL PLANS. I ACCEPT RESPONSIBILITY FOR ANY LIABILITY CAUSED BY ANY NEGLIGENT ACTS, ERRORS OR OMISSIONS ON MY PART IN PREPARING THIS PLANS.

BRYAN T. LAW, P.E. _____ DATE _____
COLORADO P.E. 25043
FOR AND ON BEHALF OF JR ENGINEERING, LLC

SADDLEHORN RANCH - FILING 4
COVER SHEET
SHEET 1 OF 10
JOB NO. 25142.06

GRADING AND EROSION CONTROL STANDARD NOTES

- 1. CONSTRUCTION MAY NOT COMMENCE UNTIL A CONSTRUCTION PERMIT IS OBTAINED FROM PLANNING AND COMMUNITY DEVELOPMENT...
2. STORMWATER DISCHARGES FROM CONSTRUCTION SITES SHALL NOT CAUSE OR THREATEN TO CAUSE POLLUTION...
3. NOTWITHSTANDING ANYTHING DEPICTED IN THESE PLANS IN WORDS OR GRAPHIC REPRESENTATION...
4. A SEPARATE STORMWATER MANAGEMENT PLAN (SWMP) FOR THIS PROJECT SHALL BE COMPLETED AND AN EROSION AND STORMWATER QUALITY CONTROL PERMIT (ESQCP) ISSUED PRIOR TO COMMENCING CONSTRUCTION...
5. ONCE THE ESQCP IS APPROVED AND A NOTICE TO PROCEED HAS BEEN ISSUED...
6. CONTROL MEASURES MUST BE INSTALLED PRIOR TO COMMENCEMENT OF ACTIVITIES THAT COULD CONTRIBUTE POLLUTANTS TO STORMWATER...
7. ALL TEMPORARY SEDIMENT AND EROSION CONTROL MEASURES SHALL BE MAINTAINED AND REMAIN IN EFFECTIVE OPERATING CONDITION...
8. TEMPORARY STABILIZATION SHALL BE IMPLEMENTED ON DISTURBED AREAS AND STOCKPILES WHERE GROUND DISTURBING CONSTRUCTION ACTIVITY HAS PERMANENTLY CEASED OR TEMPORARILY CEASED FOR LONGER THAN 14 DAYS...
9. FINAL STABILIZATION MUST BE IMPLEMENTED AT ALL APPLICABLE CONSTRUCTION SITES...
10. ALL PERMANENT STORMWATER MANAGEMENT FACILITIES SHALL BE INSTALLED AS DESIGNED IN THE APPROVED PLANS...
11. EARTH DISTURBANCES SHALL BE CONDUCTED IN SUCH A MANNER SO AS TO EFFECTIVELY MINIMIZE ACCELERATED SOIL EROSION...
12. COMPACTION OF SOIL MUST BE PREVENTED IN AREAS DESIGNATED FOR INFILTRATION CONTROL MEASURES...
13. ANY TEMPORARY OR PERMANENT FACILITY DESIGNED AND CONSTRUCTED FOR THE CONVEYANCE OF STORMWATER...
14. CONCRETE WASH WATER SHALL BE CONTAINED AND DISPOSED OF IN ACCORDANCE WITH THE SWMP...
15. DURING DEWATERING OPERATIONS OF UNCONTAMINATED GROUND WATER MAY BE DISCHARGED ON SITE...
16. EROSION CONTROL BLANKETING OR OTHER PROTECTIVE COVERING SHALL BE USED ON SLOPES STEEPER THAN 3:1...
17. CONTRACTOR SHALL BE RESPONSIBLE FOR THE REMOVAL OF ALL WASTES FROM THE CONSTRUCTION SITE...
18. WASTE MATERIALS SHALL NOT BE TEMPORARILY PLACED OR STORED IN THE STREET, ALLEY, OR OTHER PUBLIC WAY...
19. TRACKING OF SOILS AND CONSTRUCTION DEBRIS OFF-SITE SHALL BE MINIMIZED...
20. THE OWNER/DEVELOPER SHALL BE RESPONSIBLE FOR THE REMOVAL OF ALL CONSTRUCTION DEBRIS...
21. THE QUANTITY OF MATERIALS STORED ON THE PROJECT SITE SHALL BE LIMITED...
22. NO CHEMICAL(S) HAVING THE POTENTIAL TO BE RELEASED IN STORMWATER ARE TO BE STORED OR USED ONSITE...
23. BULK STORAGE OF ALLOWED PETROLEUM PRODUCTS OR OTHER ALLOWED LIQUID CHEMICALS...
24. NO PERSON SHALL CAUSE THE IMPEDIMENT OF STORMWATER FLOW...
25. OWNER/DEVELOPER AND THEIR AGENTS SHALL COMPLY WITH THE 'COLORADO WATER QUALITY CONTROL ACT'...
26. ALL CONSTRUCTION TRAFFIC MUST ENTER/EXIT THE SITE ONLY AT APPROVED CONSTRUCTION ACCESS POINTS...
27. PRIOR TO CONSTRUCTION THE PERMITTEE SHALL VERIFY THE LOCATION OF EXISTING UTILITIES...
28. A WATER SOURCE SHALL BE AVAILABLE ON SITE DURING EARTHWORK OPERATIONS...
29. THE SOILS REPORT FOR THIS SITE HAS BEEN PREPARED BY ENTECH ENGINEERING, INC. ON APRIL 24, 2020...
30. AT LEAST TEN (10) DAYS PRIOR TO THE ANTICIPATED START OF CONSTRUCTION...

COLORADO DEPARTMENT OF PUBLIC HEALTH AND ENVIRONMENT
WATER QUALITY CONTROL DIVISION
WOOD - PERMITS
4300 CHERRY CREEK DRIVE SOUTH
DENVER, CO 80246-1530
ATTN: PERMITS UNIT

LAYER LINETYPE LEGEND

Table with columns for EXISTING and PROPOSED linetypes. Rows include PHASE LINE, MATCH LINE, SECTION LINE, BOUNDARY LINE, PROPERTY LINE, EASEMENT LINE, RIGHT OF WAY, R.O.W. A LINE, CENTERLINE, CITY LIMITS, WIRE FENCE, CHAIN LINK FENCE, WOOD FENCE, MASONRY FENCE, GUARDRAIL, CONC. BARRIER, CABLE TV, ELECTRIC, FIBER OPTIC, GAS MAIN, IRRIGATION MAIN, OIL/PETRO. MAIN, OVERHEAD UTILITY, SANITARY SEWER, STORM DRAIN, TELEPHONE, WATER MAIN, RAW WATER LINE, SWALE/WATERWAY FLOWLINE, DIVERSION DITCH, DIVERSION CHANNEL, MAJOR DRAINAGE BASIN, MINOR DRAINAGE BASIN, TOP OF SLOPE, TOE OF SLOPE, EDGE OF WATER, INDEX CONTOUR, INTERMEDIATE CONTOUR, DEPRESSION CONT. (INDEX), DEPRESSION CONT. (INTER), TOP OF CUTS, TOE OF FILLS, CUT AND FILL LINE, SILT FENCE, 100 YEAR FLOODPLAIN, 500 YEAR FLOODPLAIN, FLOODWAY, BASE FLOOD ELEVATION, EDGE OF WETLANDS, STONE WALL, and STORMWATER FLOW ARROWS.

UTILITIES LEGEND

Table with columns for EXISTING and PROPOSED symbols. Rows include STORM SEWER (MANHOLE, STORM INLET, AREA INLET - SQUARE, AREA INLET - ROUND, FLARED END SECTION, RIPRAP), SANITARY SEWER (LINE MARKER, SERVICE MARKER, CLEAN-OUT, MANHOLE W/ DIRECTIONAL FLOW ARROW), WATER LINE (LINE MARKER, SERVICE MARKER, FIRE HYDRANT, FIRE CONNECTION, MANHOLE, BEND, BLOW-OFF VALVE, WELL, METER, VALVE, REDUCER, THRUST BLOCK, CROSS, PLUG W/ THRUST BLOCK, TEE, REVERSE ANCHOR, ANODE, AIR & VACUUM VALVE ASSEMBLY, TRANSMISSION BLOW-OFF ASSEMBLY), GAS LINE (MARKER, SERVICE MARKER, METER, VALVE, PLUG, TEE), and DRY UTILITIES (CABLE TV MARKER, CABLE TELEVISION PEDESTAL, ELECTRIC MARKER, ELECTRIC SERVICE MARKER, ELECTRICAL PEDESTAL, ELECTRICAL METER, ELECTRICAL MANHOLE, FIBER-OPTIC MARKER, IRRIGATION PEDESTAL, TELEPHONE MARKER, TELEPHONE PEDESTAL, TELEPHONE MANHOLE, UTILITY POLE, GUY ANCHOR, GUY POLE).

ENGINEER'S STATEMENT

THIS GRADING AND EROSION CONTROL PLAN WAS PREPARED UNDER MY DIRECTION AND SUPERVISION AND IS CORRECT TO THE BEST OF MY KNOWLEDGE AND BELIEF. SAID PLAN HAS BEEN PREPARED ACCORDING TO THE CRITERIA ESTABLISHED BY THE COUNTY FOR GRADING AND EROSION CONTROL PLANS. I ACCEPT RESPONSIBILITY FOR ANY LIABILITY CAUSED BY ANY NEGLIGENT ACTS, ERRORS OR OMISSIONS ON MY PART IN PREPARING THIS PLANS.

BRYAN T. LAW, P.E.
COLORADO P.E. 25043
FOR AND ON BEHALF OF JR ENGINEERING, LLC

DATE

UNTIL SUCH TIME AS THESE DRAWINGS ARE APPROVED BY THE APPROPRIATE REVIEWING AGENCIES, OR ENGINEERING APPROVES THEIR USE. THESE DESIGNS ARE WRITTEN AUTHORIZATION.

PREPARED FOR
ROI PROPERTY GROUP, LLC
2495 RIGDON STREET
NAPA, CALIFORNIA
(707) 365-6891
BRADY WILLIAMS

J.R. ENGINEERING
A Westman Company
Central 300-740-9888 • Colorado Springs 719-588-2583
Fort Collins 970-491-9888 • www.jrengineering.com

Table with columns for BY and DATE.

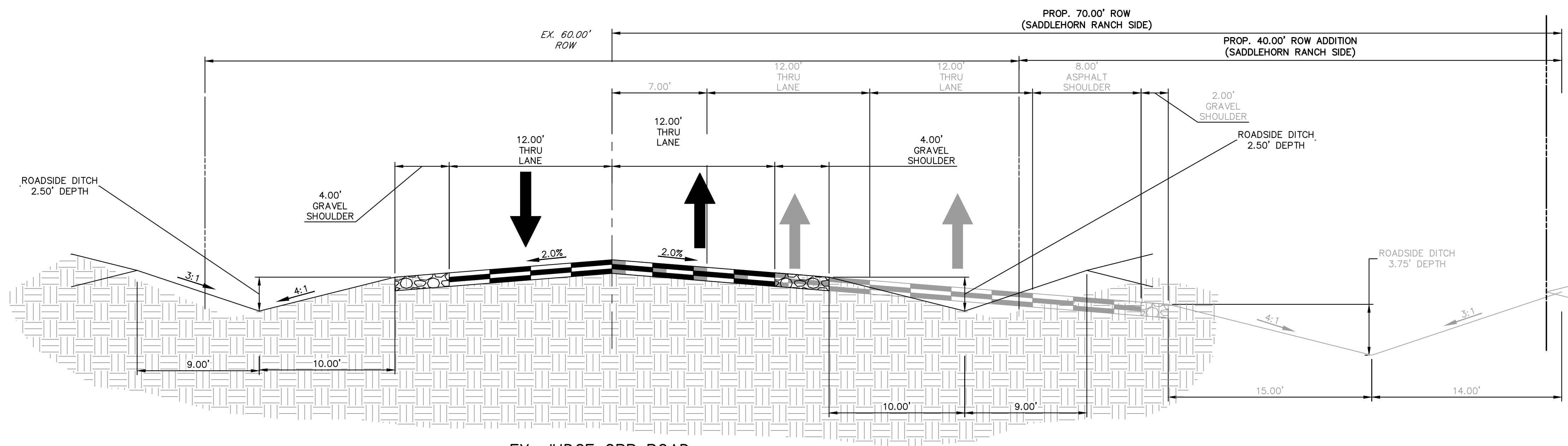
Table with columns for No., REVISION, N/A, and DATE.

Table with columns for H-SCALE, V-SCALE, DATE, DESIGNED BY, DRAWN BY, and CHECKED BY.

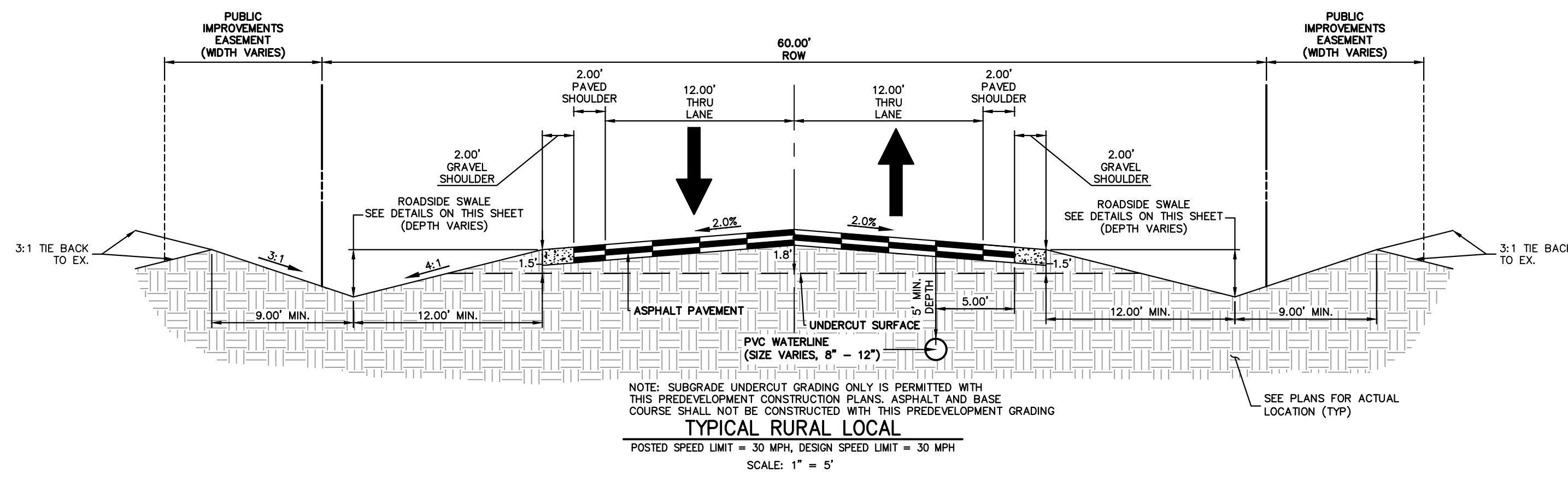
SADDLEHORN RANCH - FILING 4
LEGEND & NOTES

SHEET 2 OF 10

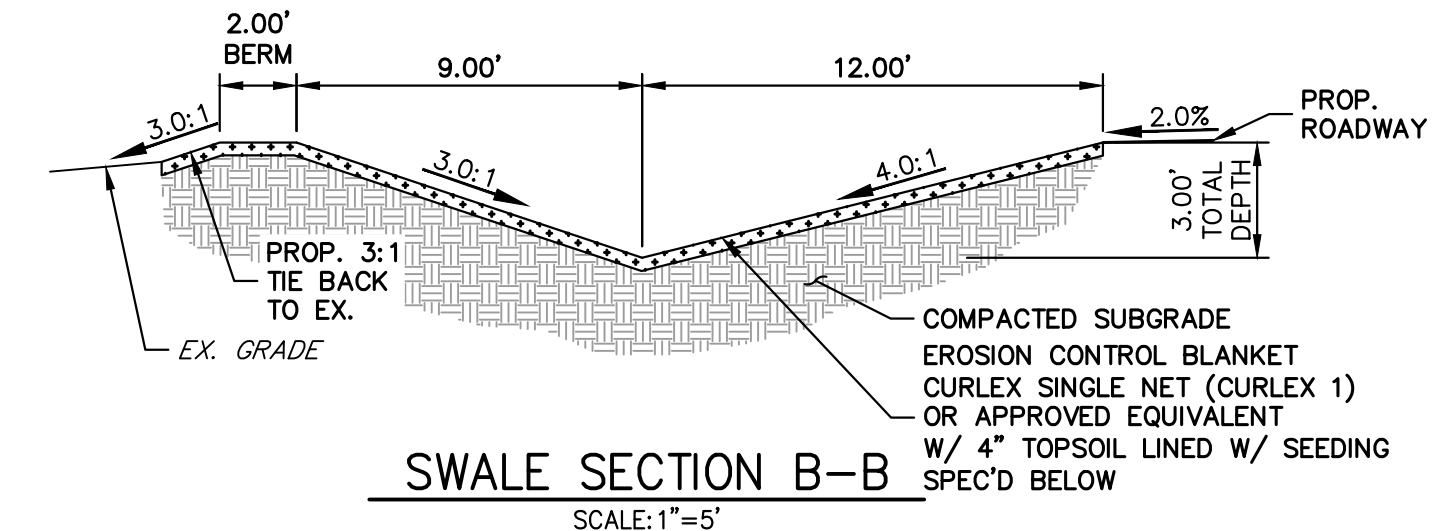
JOB NO. 25142.06



EX. JUDGE ORR ROAD - TYPICAL SECTION
 POSTED SPEED LIMIT = 45 MPH, DESIGN SPEED LIMIT = 50 MPH
 *NOTE: ULTIMATE SECTION HAS BEEN OVERLAPPED.

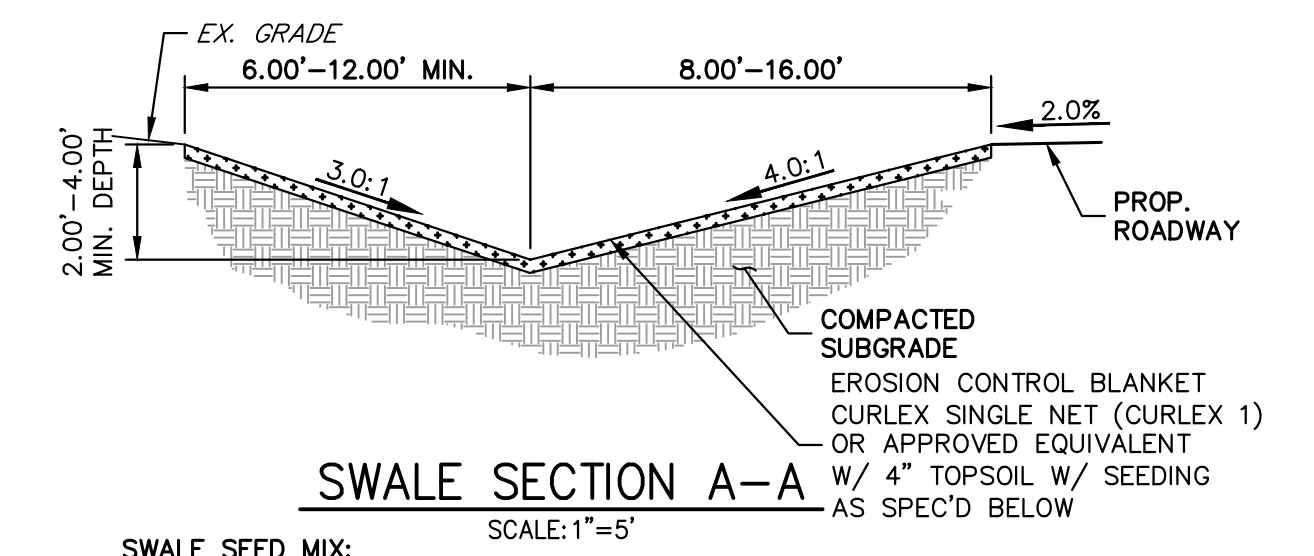


NOTE: SUBGRADE UNDERCUT GRADING ONLY IS PERMITTED WITH THIS PREDEVELOPMENT CONSTRUCTION PLANS, ASPHALT AND BASE COURSE SHALL NOT BE CONSTRUCTED WITH THIS PREDEVELOPMENT GRADING.
TYPICAL RURAL LOCAL
 POSTED SPEED LIMIT = 30 MPH, DESIGN SPEED LIMIT = 30 MPH
 SCALE: 1" = 5'



SWALE SECTION B-B
 SCALE: 1" = 5'

SWALE SEED MIX:
 EROSION CONTROL BLANKET WITH PAWNEE BUTTES SEED INC. - "LOW GROW NATIVE MIX"
 -IDAHO FESCUE
 -SANDBERG BLUEGRASS
 -ROCKY MOUNTAIN FESCUE
 -BIG BLUEGRASS



SWALE SECTION A-A
 SCALE: 1" = 5'

SWALE SEED MIX:
 EROSION CONTROL BLANKET WITH PAWNEE BUTTES SEED INC. - "LOW GROW NATIVE MIX"
 -IDAHO FESCUE
 -SANDBERG BLUEGRASS
 -ROCKY MOUNTAIN FESCUE
 -BIG BLUEGRASS



ROADSIDE SWALE NOTES

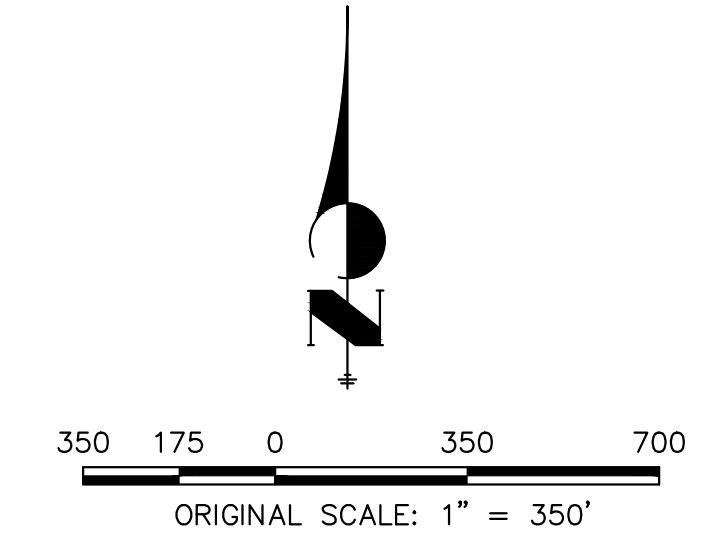
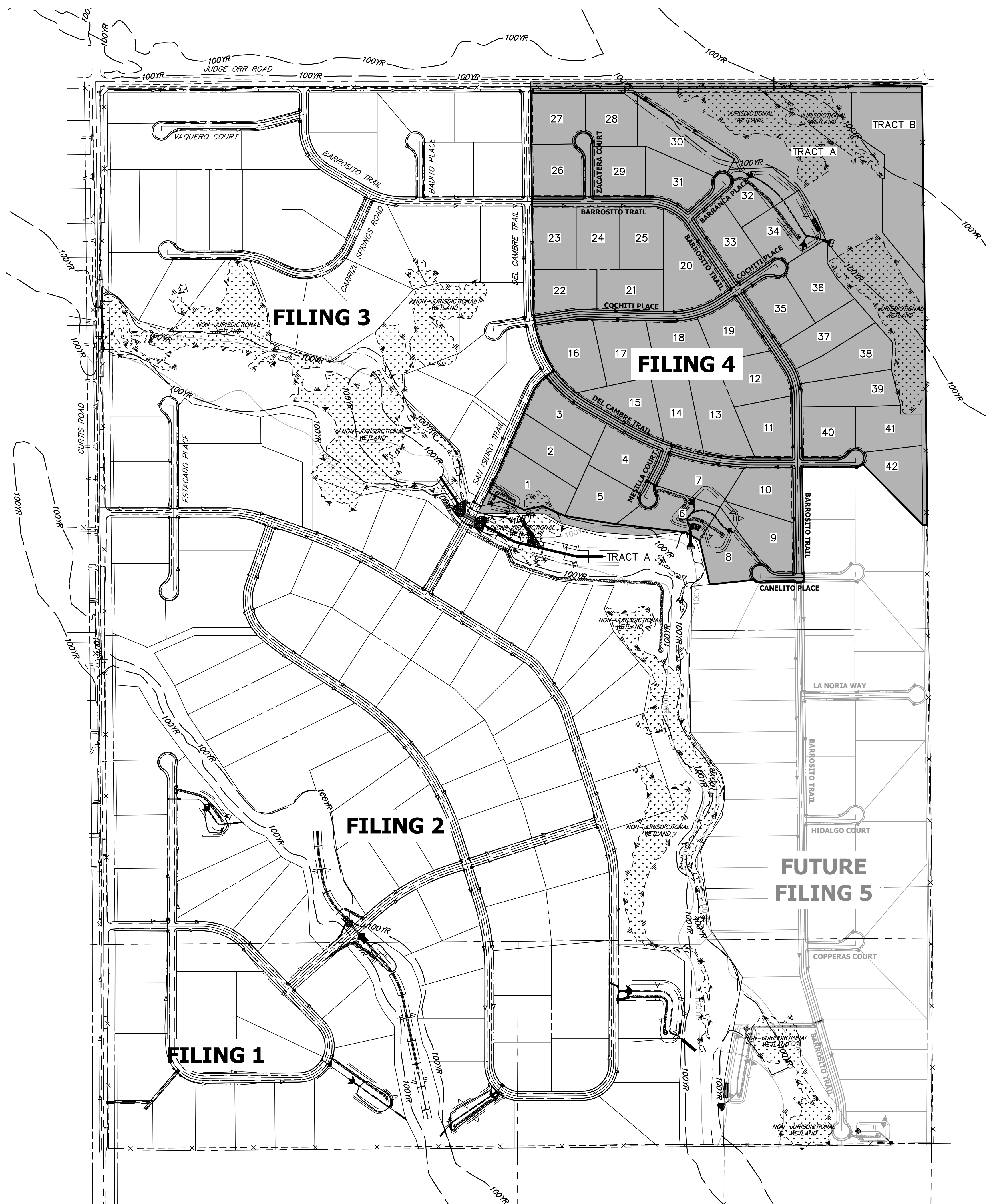
1. SWALE SECTION A-A PROVIDES MINIMUM SWALE DIMENSIONS. IN AREAS WHERE 3:1 TIE BACK TO EXISTING DOES NOT PROVIDE MINIMUM SWALE DEPTH, SWALE TO BE CUT DEEPER SUCH THAT 3' DEPTH IS PROVIDED RELATIVE TO EXISTING GRADE.
2. SWALE SECTION B-B TO BE USED IN FILL AREAS OF ROADWAY WHERE CUTTING SWALE DEEPER TO ACHIEVE 3.0' DEPTH RELATIVE TO EXISTING GRADE. CAN NOT BE ACHIEVED DUE TO DOWN STREAM GRADE REQUIREMENTS. 2.0' BERM MUST BE PROVIDED TO MITIGATE FUTURE EROSION.

ENGINEER'S STATEMENT

THIS GRADING AND EROSION CONTROL PLAN WAS PREPARED UNDER MY DIRECTION AND SUPERVISION AND IS CORRECT TO THE BEST OF MY KNOWLEDGE AND BELIEF. SAID PLAN HAS BEEN PREPARED ACCORDING TO THE CRITERIA ESTABLISHED BY THE COUNTY FOR GRADING AND EROSION CONTROL PLANS. I ACCEPT RESPONSIBILITY FOR ANY LIABILITY CAUSED BY ANY NEGLIGENT ACTS, ERRORS OR OMISSIONS ON MY PART IN PREPARING THIS PLANS.

BRYAN T. LAW, P.E. _____ DATE _____
 COLORADO P.E. 25043
 FOR AND ON BEHALF OF JR ENGINEERING, LLC

BY	DATE				
No.	REVISION				
H-SCALE	1" = 5'	N/A	5/3/23	SWW	SWW
V-SCALE	1" = 5'				
DESIGNED BY				SWW	
DRAWN BY				SWW	
CHECKED BY					
SADDLEHORN RANCH - FILING 4					
TYPICAL SECTIONS					
				SHEET	3 OF 10
				JOB NO.	25142.06



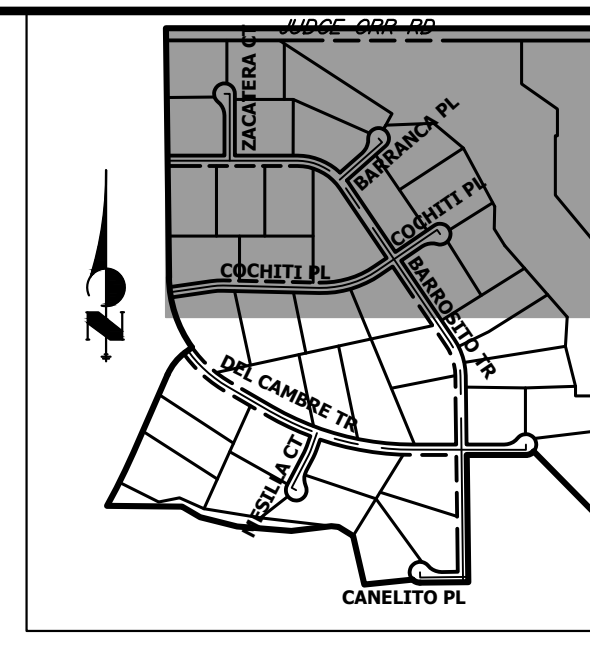
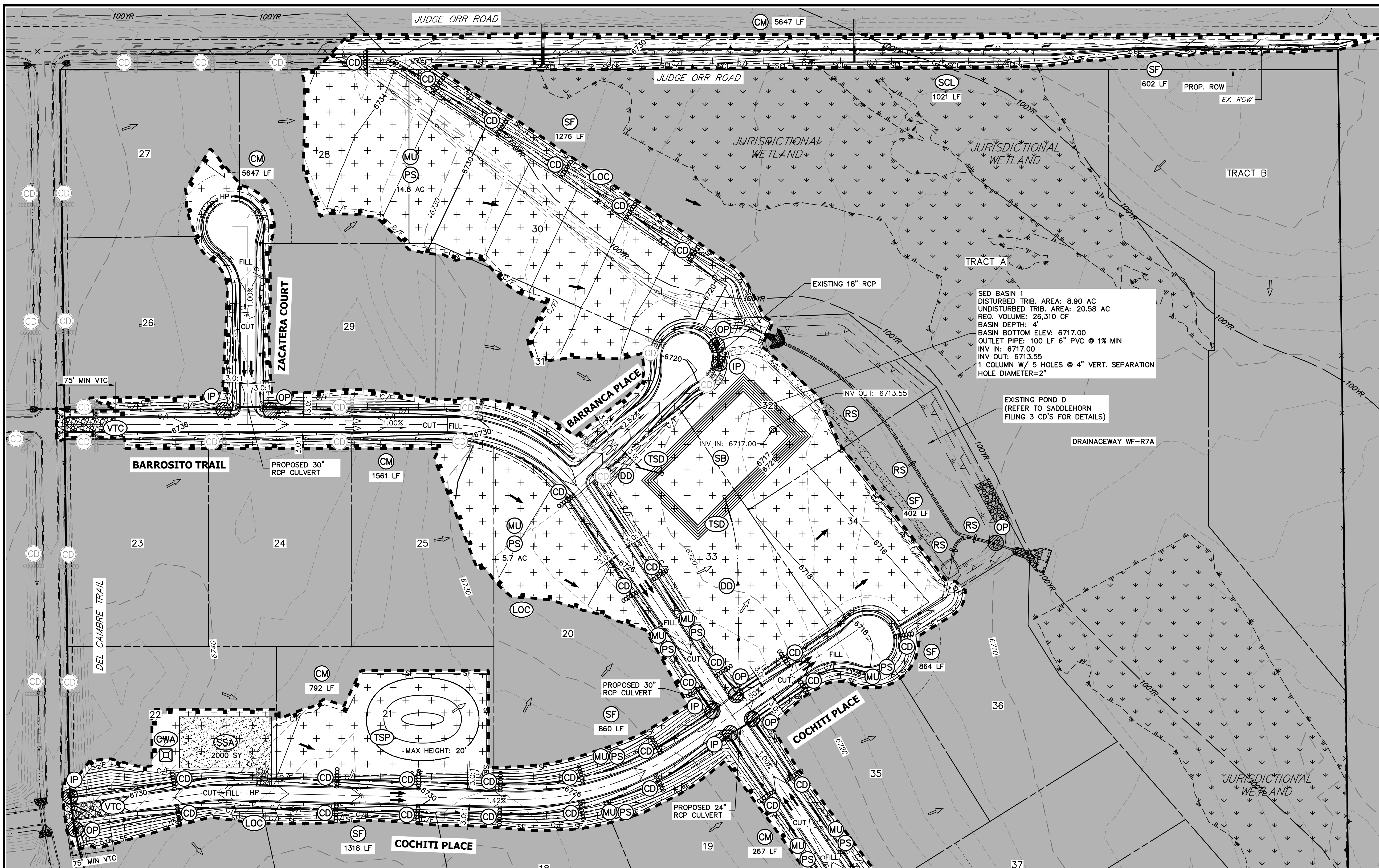
OWNER/DEVELOPER STATEMENT
 I, THE OWNER/DEVELOPER HAVE READ AND WILL COMPLY WITH THE REQUIREMENTS OF THE GRADING AND EROSION CONTROL PLAN.

JOHN HELMICK _____ DATE _____
 GORILLA CAPITAL CO SADDLEHORN RANCH, LLC
 1342 HIGH STREET
 EUGENE, OR 97401

ENGINEER'S STATEMENT
 THIS GRADING AND EROSION CONTROL PLAN WAS PREPARED UNDER MY DIRECTION AND SUPERVISION AND IS CORRECT TO THE BEST OF MY KNOWLEDGE AND BELIEF. SAID PLAN HAS BEEN PREPARED ACCORDING TO THE CRITERIA ESTABLISHED BY THE COUNTY FOR GRADING AND EROSION CONTROL PLANS. I ACCEPT RESPONSIBILITY FOR ANY LIABILITY CAUSED BY ANY NEGLIGENT ACTS, ERRORS OR OMISSIONS ON MY PART IN PREPARING THIS PLANS.

BRYAN T. LAW, P.E. _____ DATE _____
 COLORADO P.E. 25043
 FOR AND ON BEHALF OF JR ENGINEERING, LLC

UNTIL SUCH TIME AS THESE DRAWINGS ARE APPROVED BY THE APPROPRIATE REVIEWING AGENCIES, OR ENGINEERING APPROVES THEIR USE DESIGNATED BY WRITTEN AUTHORIZATION.	
PREPARED FOR	ROI PROPERTY GROUP, LLC 2495 RIGDON STREET NAPA, CALIFORNIA (707) 365-6891 BRADY WILLIAMS
	J.R. ENGINEERING A Westman Company Central 303-740-9888 • Colorado Springs 719-588-2583 Fort Collins 970-491-9888 • www.jrengineering.com
BY	DATE
No. REVISION	
H-SCALE	1"=350'
V-SCALE	N/A
DATE	5/3/23
DESIGNED BY	GVT
DRAWN BY	GVT
CHECKED BY	
SADDLEHORN RANCH - FILING 4 OVERALL SITE MAP	
SHEET	4 OF 10
JOB NO.	25142.06



LEGEND

SEDIMENT BASIN	SB	TOE	TOE
SILT FENCE	SF	TOP	TOP
STABILIZED STAGING AREA	SSA		
CONSTRUCTION MARKER	CM		
VEHICLE TRACKING CONTROL	VTC		
TEMPORARY STOCK PILE	TSP		
EROSION CONTROL BLANKET	ECB		
INLET PROTECTION	IP		
OUTLET PROTECTION	OP		
DIVERSION DITCH AND DIKE, TEMPORARY	DD		
CUT AND FILL LINE	C/F		
LIMITS OF CONSTRUCTION/DISTURBANCE	LOC		
CONCRETE WASHOUT AREA	CWA		
MULCHING & PERMANENT SEEDING	ML, PS		
TEMPORARY SLOPE DRAIN	TSD		
REINFORCED ROCK BERM	RRB		
CHECK DAM	CD		
EXISTING CHECK DAM	CD		
ROCK SOCK	RS		
EXISTING DRAINAGE ARROW			
PROPOSED DRAINAGE ARROW			

UNTIL SUCH TIME AS THESE DRAWINGS ARE APPROVED BY THE APPROPRIATE REVIEWING AGENCIES, OR ENGINEERING APPROVES THEIR USE, THESE DRAWINGS ARE DESIGNATED BY WRITTEN AUTHORIZATION.

PREPARED FOR
ROI PROPERTY GROUP, LLC
2495 RIDGON STREET
NAPA, CALIFORNIA
(707) 365-6891
BRADY WILLIAMS

J.R. ENGINEERING
A Westran Company
Central 303-740-9888 • Colorado Springs 719-583-2593
Fort Collins 970-491-9888 • www.jrengineering.com

H-SCALE	V-SCALE	DATE	DESIGNED BY	DRAWN BY	CHECKED BY	BY DATE	
						NO.	REVISION
1"=100'	N/A	5/3/23	SWW	SWW			

MATCH LINE
SEE SHEET 6

EARTHWORK SUMMARY TABLE

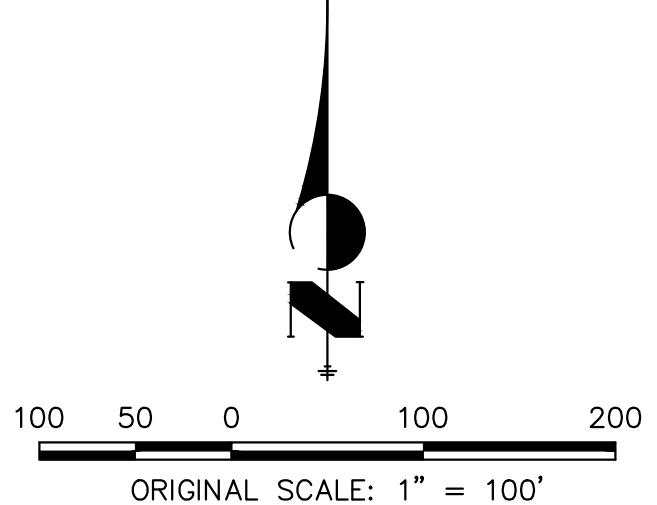
NET CUT (CY)	51,880
NET FILL (CY)	100,006
NET IMPORT (CY)	48,126
* 1' ROAD CUT	
* 10% COMPACTION	

NOTES

- REFER TO THE STORMWATER MANAGEMENT PLAN (SWMP) FOR A DETAILED DESCRIPTION OF THE MAINTENANCE PROGRAMS FOR EROSION CONTROL FACILITIES.
- SEE SHEET 3 FOR SWALE TYPICAL CROSS SECTIONS THAT INCLUDES SWALE LINING DETAIL.
- ALL DISTURBED AREAS NOT TO BE PAVED SHALL BE PERMANENTLY SEEDED PER THE PANNEE BUTTES SEED INC. "LOW GROW NATIVE MIX" OR APPROVED EQUAL. SEE SHEET 3 FOR SEED MIX DETAILS. 12.7 TOTAL ACRES OF SEEDING ESTIMATED.
- P.I.E. = PUBLIC IMPROVEMENTS EASEMENT
- EXISTING VEGETATION CONSISTS OF NATIVE MEADOW GRASSES (APPROX. 70% COVERAGE) DETERMINED THROUGH A COMBINATION OF FIELD VERIFICATION AND AERIAL INSPECTION.
- NO BATCH PLANTS WILL BE UTILIZED ON SITE.
- SILT FENCES THAT ARE NOT PARALLEL TO CONTOURS MUST BE INSTALLED WITH J-HOOK.

BMP PHASING

- INITIAL:**
- INSTALL VTC
 - INSTALL CWA
 - ESTABLISH SSA
 - INSTALL CONSTRUCTION MARKERS
 - INSTALL SILT FENCE
 - INSTALL SEDIMENT BASINS
 - INSTALL DIVERSION DITCHES
- INTERIM:**
- LOCATE/INSTALL TEMPORARY STOCKPILE
 - MAINTAIN ALL BMPs
 - INSTALL RRBs
 - INSTALL INLET AND OUTLET PROTECTION
 - INSTALL EROSION CONTROL BLANKETS
- FINAL:**
- INSTALL MULCH AND PERMANENT SEEDING IN ALL DISTURBED AREAS
 - REMOVE SILT FENCE AFTER STABILIZED, INLET & OUTLET PROTECTION, RRBs, EROSION CONTROL BLANKETS, VTC, CWA, CONSTRUCTION MARKERS, SEDIMENT BASINS, DIVERSION DITCHES, SSA, AND TEMPORARY STOCKPILES



Know what's below.
Call before you dig.

OWNER/DEVELOPER STATEMENT

I, THE OWNER/DEVELOPER HAVE READ AND WILL COMPLY WITH THE REQUIREMENTS OF THE GRADING AND EROSION CONTROL PLAN.

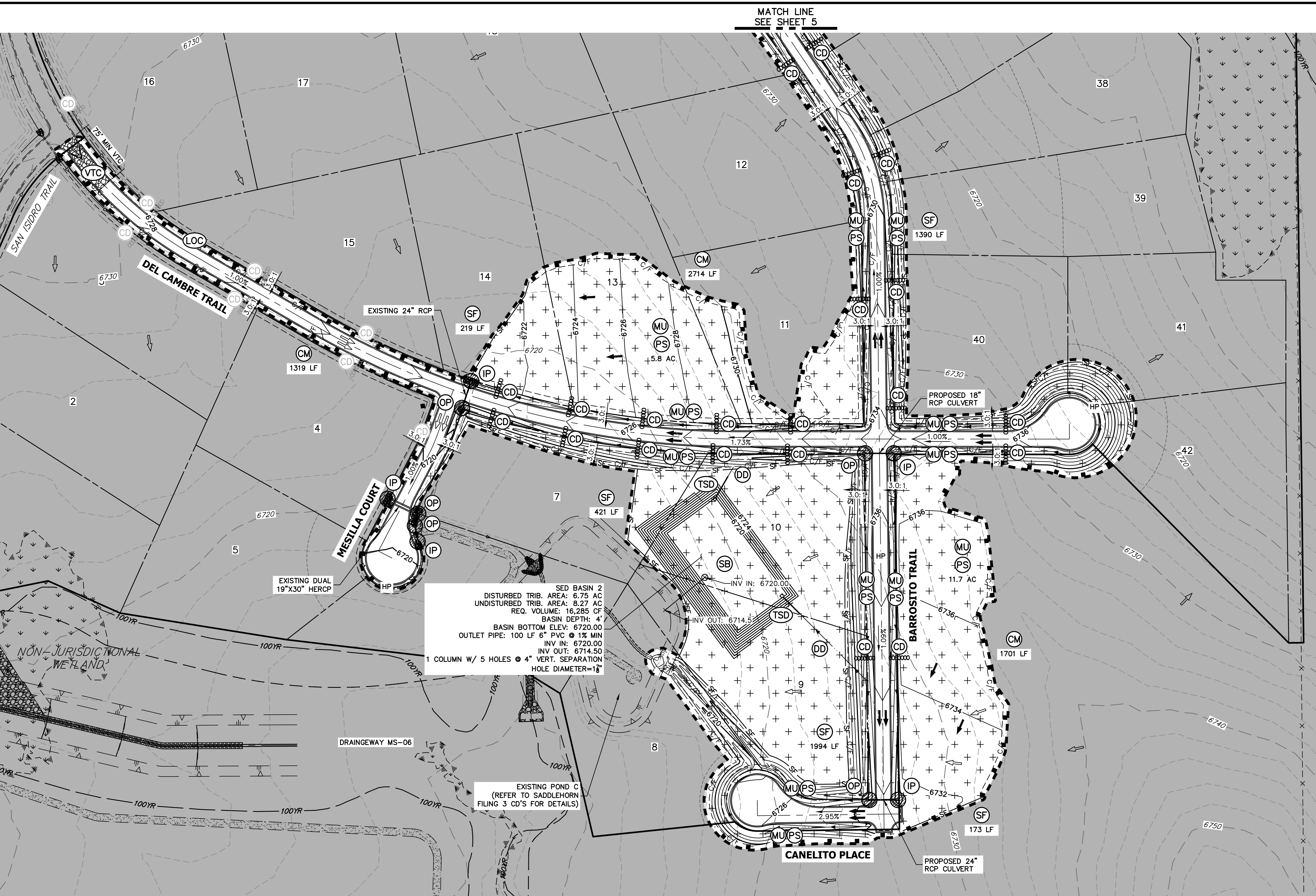
JOHN HELMICK _____ DATE _____
GORILLA CAPITAL CO SADDLEHORN RANCH, LLC
1342 HIGH STREET
EUGENE, OR 97401

ENGINEER'S STATEMENT

THIS GRADING AND EROSION CONTROL PLAN WAS PREPARED UNDER MY DIRECTION AND SUPERVISION AND IS CORRECT TO THE BEST OF MY KNOWLEDGE AND BELIEF. SAID PLAN HAS BEEN PREPARED ACCORDING TO THE CRITERIA ESTABLISHED BY THE COUNTY FOR GRADING AND EROSION CONTROL PLANS. I ACCEPT RESPONSIBILITY FOR ANY LIABILITY CAUSED BY ANY NEGLIGENT ACTS, ERRORS OR OMISSIONS ON MY PART IN PREPARING THIS PLANS.

BRYAN T. LAW, P.E. _____ DATE _____
COLORADO P.E. 25043
FOR AND ON BEHALF OF JR ENGINEERING, LLC

SADDLEHORN RANCH -
FILING 4
GRADING & EROSION
CONTROL PLANS



MATCH LINE
SEE SHEET 5



KEY MAP
N.T.S.

LEGEND

SEDIMENT BASIN	(SB)	TOE	TOE
SILT FENCE	(SF)	SF	SF
STABILIZED STAGING AREA	(SSA)		
CONSTRUCTION MARKER	(CM)		
VEHICLE TRACKING CONTROL	(VTC)		
TEMPORARY STOCK PILE	(TSP)		
EROSION CONTROL BLANKET	(ECB)		
INLET PROTECTION	(IP)		
OUTLET PROTECTION	(OP)		
DIVERSION DITCH AND DIKE, TEMPORARY	(DD)		
CUT AND FILL LINE	- - - - -	C/F	C/F
LIMITS OF CONSTRUCTION/DISTURBANCE	(LOC)		
CONCRETE WASHOUT AREA	(CWA)		
MULCHING & PERMANENT SEEDING	(MU) (PS)		
TEMPORARY SLOPE DRAIN	(TSD)		
REINFORCED ROCK BERM	(RRB)		
CHECK DAM	(CD)		
EXISTING CHECK DAM	(CD)		
ROCK SOCK	(RS)		
EXISTING DRAINAGE ARROW			
PROPOSED DRAINAGE ARROW			

SED BASIN 2
 DISTURBED TRIB. AREA: 6.75 AC
 UNDISTURBED TRIB. AREA: 8.27 AC
 REQ. VOLUME: 16,285 CF
 BASIN DEPTH: 4'
 BASIN BOTTOM ELEV: 6720.00
 OUTLET PIPE: 100 LF 6" PVC @ 1% MIN
 INV IN: 6720.00
 INV OUT: 6714.50
 1 COLUMN W/ 5 HOLES @ 4" VERT. SEPARATION
 HOLE DIAMETER=18"

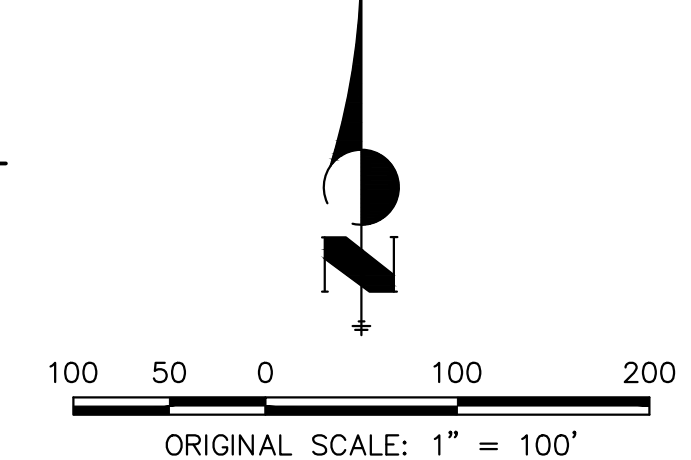
EXISTING POND C
 (REFER TO SADDLEHORN
 FILING 3 CD'S FOR DETAILS)

BMP PHASING

- INITIAL:**
 1) INSTALL VTC
 2) INSTALL CWA
 3) ESTABLISH SSA
 4) INSTALL CONSTRUCTION MARKERS
 5) INSTALL SILT FENCE
 6) INSTALL SEDIMENT BASINS
 7) INSTALL DIVERSION DITCHES
- INTERIM:**
 1) LOCATE/INSTALL TEMPORARY STOCKPILE
 2) MAINTAIN ALL BMPS
 3) INSTALL RRBs
 4) INSTALL INLET AND OUTLET PROTECTION
 5) INSTALL EROSION CONTROL BLANKETS
- FINAL:**
 1) INSTALL MULCH AND PERMANENT SEEDING IN ALL DISTURBED AREAS
 2) REMOVE SILT FENCE AFTER STABILIZED, INLET & OUTLET PROTECTION, RRBs, EROSION CONTROL BLANKETS, VTC, CWA, CONSTRUCTION MARKERS, SEDIMENT BASINS, DIVERSION DITCHES, SSA, AND TEMPORARY STOCKPILES

NOTES

- REFER TO THE STORMWATER MANAGEMENT PLAN (SWMP) FOR A DETAILED DESCRIPTION OF THE MAINTENANCE PROGRAMS FOR EROSION CONTROL FACILITIES.
- SEE SHEET 3 FOR SWALE TYPICAL CROSS SECTIONS THAT INCLUDES SWALE LINING DETAIL.
- ALL DISTURBED AREAS NOT TO BE PAVED SHALL BE PERMANENTLY SEEDING PER THE PAWNEE BUTTES SEED INC - "LOW GROW NATIVE MIX" OR APPROVED EQUAL. SEE SHEET 3 FOR SEED MIX DETAILS. 12.7 TOTAL ACRES OF SEEDING ESTIMATED.
- P.I.E = PUBLIC IMPROVEMENTS EASEMENT
- EXISTING VEGETATION CONSISTS OF NATIVE MEADOW GRASSES (APPROX. 70% COVERAGE) DETERMINED THROUGH A COMBINATION OF FIELD VERIFICATION AND AERIAL INSPECTION.
- NO BATCH PLANTS WILL BE UTILIZED ON SITE.
- SILT FENCES THAT ARE NOT PARALLEL TO CONTOURS MUST BE INSTALLED WITH J-HOOK.



OWNER/DEVELOPER STATEMENT

I, THE OWNER/DEVELOPER HAVE READ AND WILL COMPLY WITH THE REQUIREMENTS OF THE GRADING AND EROSION CONTROL PLAN.

JOHN HELMICK _____ DATE _____
 GORILLA CAPITAL CO SADDLEHORN RANCH, LLC
 1342 HIGH STREET
 EUGENE, OR 97401

ENGINEER'S STATEMENT

THIS GRADING AND EROSION CONTROL PLAN WAS PREPARED UNDER MY DIRECTION AND SUPERVISION AND IS CORRECT TO THE BEST OF MY KNOWLEDGE AND BELIEF. SAID PLAN HAS BEEN PREPARED ACCORDING TO THE CRITERIA ESTABLISHED BY THE COUNTY FOR GRADING AND EROSION CONTROL PLANS. I ACCEPT RESPONSIBILITY FOR ANY LIABILITY CAUSED BY ANY NEGLIGENT ACTS, ERRORS OR OMISSIONS ON MY PART IN PREPARING THIS PLANS.

BRYAN T. LAW, P.E. _____ DATE _____
 COLORADO P.E. 25043
 FOR AND ON BEHALF OF JR ENGINEERING, LLC

UNTIL SUCH TIME AS THESE DRAWINGS ARE APPROVED BY THE APPROPRIATE REVIEWING AGENCIES, OR ENGINEERING APPROVES THEIR USE, THESE DRAWINGS ARE DESIGNATED BY WRITTEN AUTHORIZATION.

PREPARED FOR
ROI PROPERTY GROUP, LLC
 2495 RIDGON STREET
 NAPA, CALIFORNIA
 (707) 365-6891
 BRADY WILLIAMS

J.R. ENGINEERING
 A Westman Company
 Centennial 300-740-9888 • Colorado Springs 719-588-2683
 Fort Collins 970-491-9888 • www.jrengineering.com

BY	DATE	No.	REVISION

SADDLEHORN RANCH - FILING 4
GRADING & EROSION CONTROL PLANS

SHEET 6 OF 10
 JOB NO. 25142.06

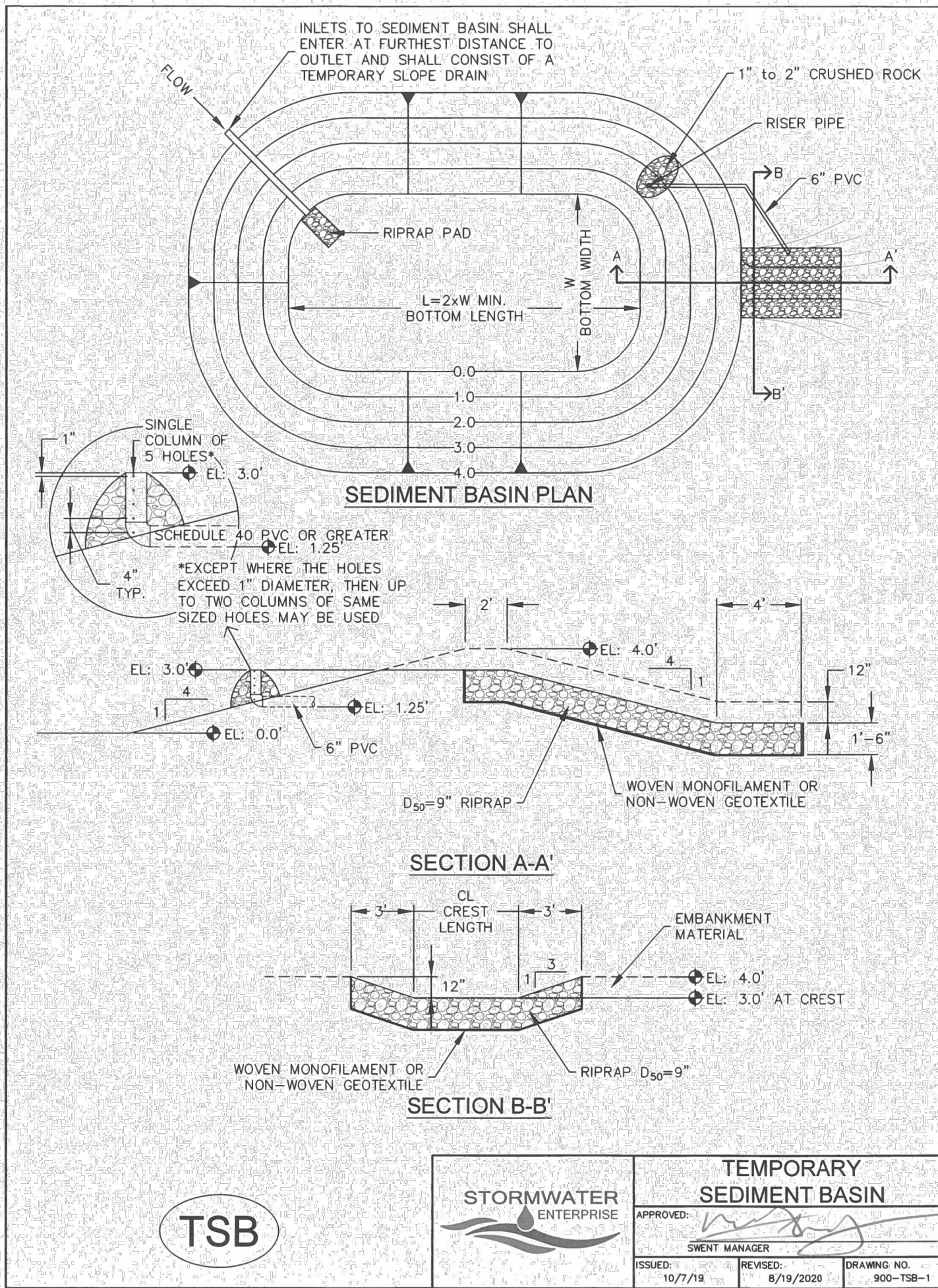


TABLE SB-1, SIZING INFORMATION FOR STANDARD SEDIMENT BASIN

UPSTREAM DRAINAGE AREA (ROUNDED TO NEAREST ACRE), (AC)	Basin Bottom Width (W), (FT)	Spillway Crest Length (CL), (FT)	Hole Diameter (HD), (IN)
1	12 1/2"	2	3/2"
2	21	3	1 1/2"
3	28	5	2"
4	33 1/2	6	2 1/2"
5	38 1/2	8	3"
6	43	9	3 1/2"
7	47 1/2	11	4"
8	51	12	4 1/2"
9	55	13	5"
10	58 1/2	15	5 1/2"
11	61	16	6"
12	64	18	7"
13	67 1/2	19	8"
14	70 1/2	21	9"
15	73 1/2	22	10"

INSTALLATION NOTES

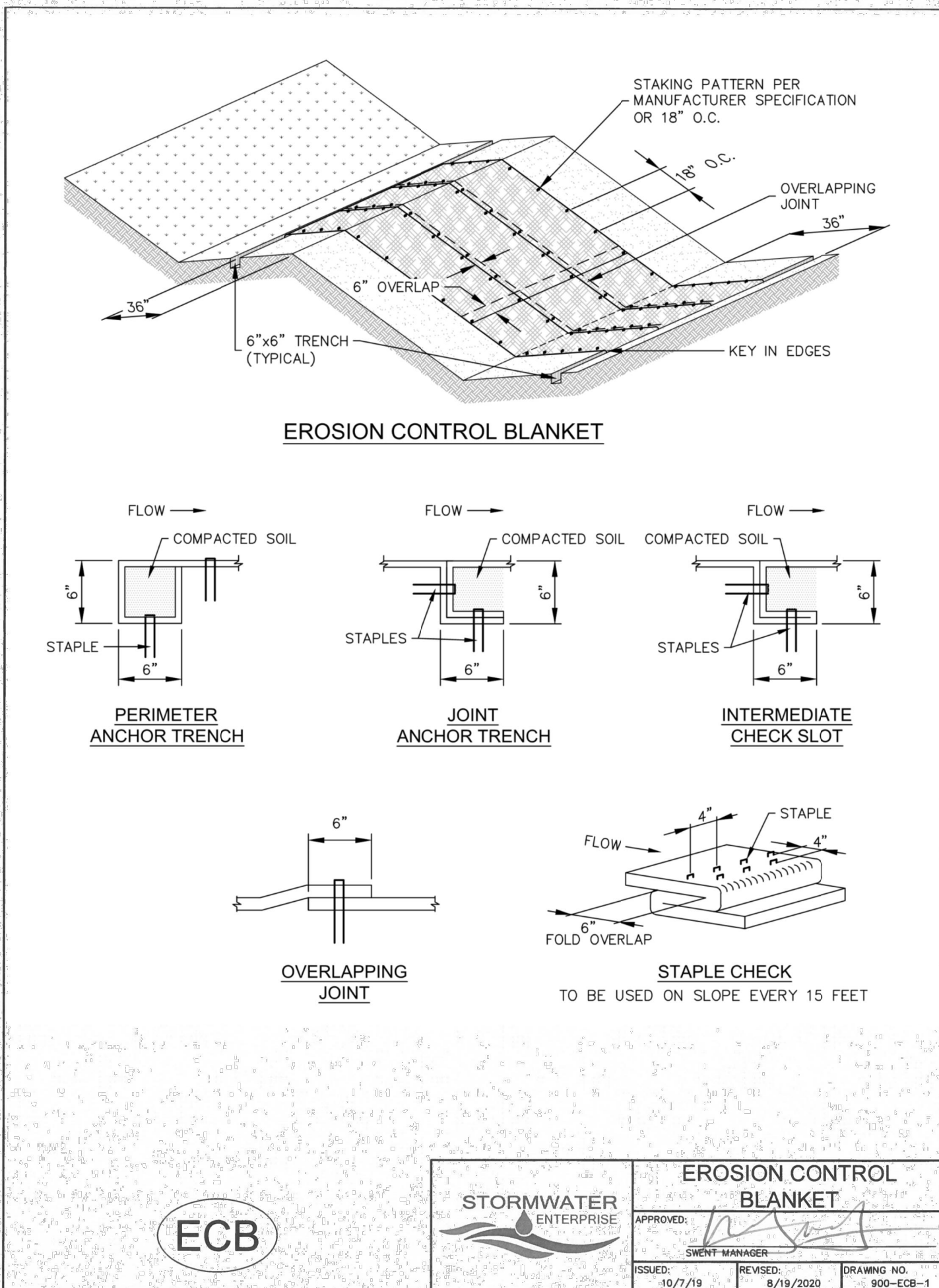
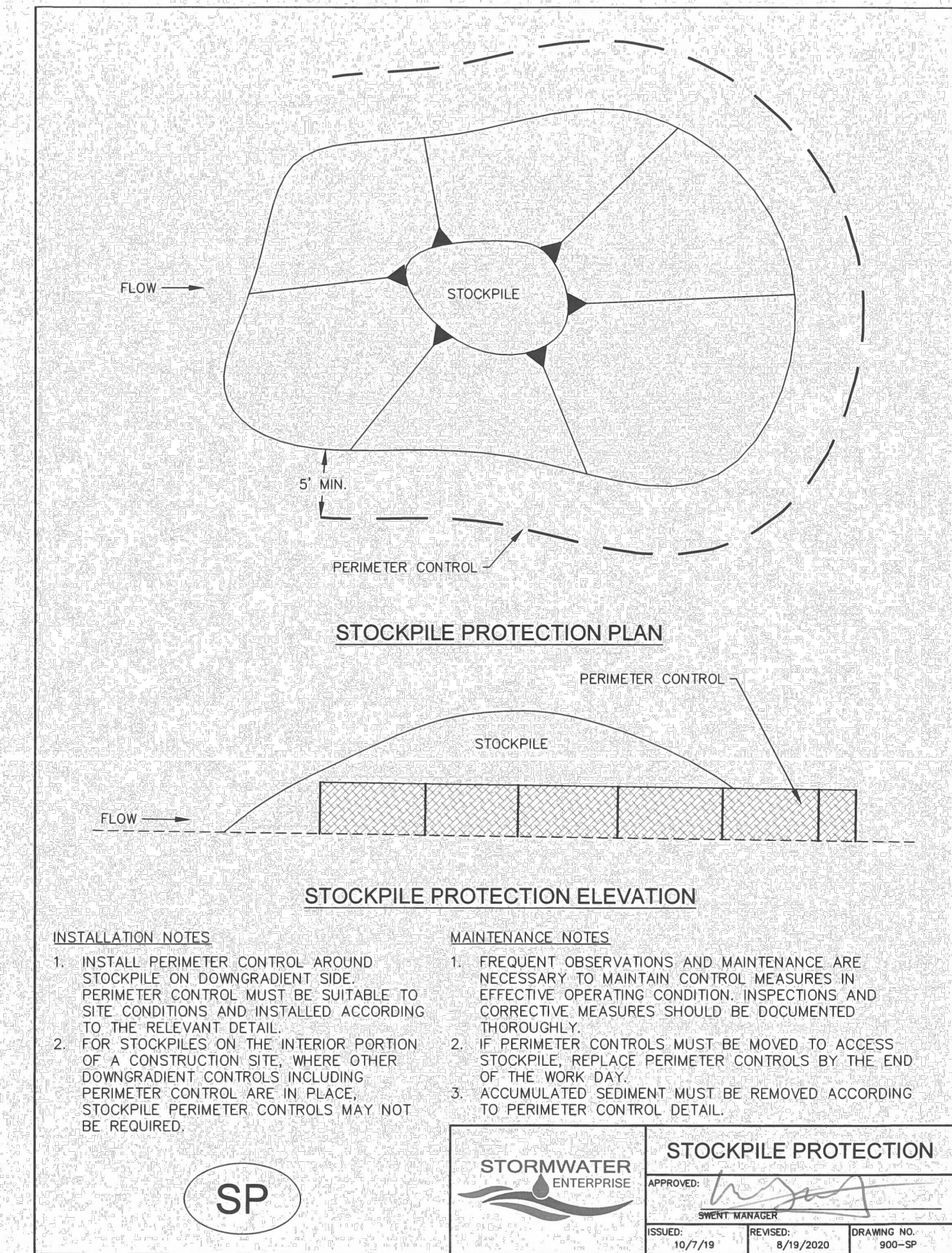
- FOR STANDARD BASIN, BOTTOM DIMENSION MAY BE MODIFIED AS LONG AS BOTTOM AREA IS NOT REDUCED.
- EMBANKMENT MATERIAL SHALL CONSIST OF SOIL FREE OF DEBRIS, ORGANIC MATERIAL, AND ROCKS OR CONCRETE GREATER THAN 3 INCHES AND SHALL HAVE A MINIMUM OF 15 PERCENT BY WEIGHT PASSING THE No. 200 SIEVE.
- EMBANKMENT MATERIAL SHALL BE COMPACTED TO AT LEAST 95 PERCENT OF MAXIMUM DENSITY IN ACCORDANCE WITH ASTM D-698.
- PIPE SCHEDULE 40 OR GREATER SHALL BE USED.
- THE DETAILS SHOWN ON THESE SHEETS PERTAIN TO STANDARD SEDIMENT BASIN(S) FOR DRAINAGE AREAS LESS THAN 15 ACRES. SEE CONSTRUCTION DRAWINGS FOR EMBANKMENT, STORAGE VOLUME, SPILLWAY, OUTLET, AND OUTLET PROTECTION DETAILS FOR ANY SEDIMENT BASIN(S) THAT HAVE BEEN INDIVIDUALLY DESIGNED FOR DRAINAGE AREAS LARGER THAN 15 ACRES. DESIGN CALCULATIONS MUST BE APPROVED PRIOR TO IMPLEMENTATION.

MAINTENANCE NOTES

- FREQUENT OBSERVATIONS AND MAINTENANCE ARE NECESSARY TO MAINTAIN CONTROL MEASURES IN EFFECTIVE OPERATING CONDITION. INSPECTIONS AND CORRECTIVE MEASURES SHOULD BE DOCUMENTED THOROUGHLY.
- SEDIMENT ACCUMULATED IN BASIN SHALL BE REMOVED AS NEEDED TO MAINTAIN CONTROL MEASURE EFFECTIVENESS, TYPICALLY WHEN SEDIMENT DEPTH REACHES ONE FOOT (I.E. TWO FEET BELOW SPILLWAY CREST).
- SEDIMENT BASINS ARE TO REMAIN IN PLACE UNTIL THE UPSTREAM DISTURBED AREA IS PERMANENTLY STABILIZED.
- PERMANENTLY STABILIZE AREA AFTER SEDIMENT BASIN REMOVAL.

TSB

STORMWATER ENTERPRISE	APPROVED: [Signature]	CLIENT MANAGER
ISSUED: 10/7/19	REVISED: 8/19/2020	DRAWING NO. 900-TSB-2



INSTALLATION NOTES

- 100% NATURAL AND BIODEGRADABLE MATERIALS ARE REQUIRED FOR EROSION CONTROL BLANKETS. TRM PRODUCTS MAY BE USED WHERE APPROPRIATE AS DESIGNATED BY THE ENGINEER.
- IN AREAS WHERE EROSION CONTROL BLANKETS ARE SHOWN ON THE PLANS, THE PERMITTEE SHALL PLACE TOPSOIL AND PERFORM FINAL GRADING, SURFACE PREPARATION, AND SEEDING AND MULCHING. SUBGRADE SHALL BE SMOOTH AND MOIST PRIOR TO EROSION CONTROL BLANKET INSTALLATION, AND THE EROSION CONTROL BLANKET SHALL BE IN FULL CONTACT WITH THE SUBGRADE. NO GAPS OR VOIDS SHALL EXIST UNDER THE BLANKET.
- PERIMETER ANCHOR TRENCH SHALL BE USED ALONG THE OUTSIDE PERIMETER OF ALL BLANKET AREAS.
- JOINT ANCHOR TRENCH SHALL BE USED TO JOIN ROLLS OF EROSION CONTROL BLANKETS TOGETHER (LONGITUDINALLY AND TRANSVERSELY) FOR ALL EROSION CONTROL BLANKETS.
- INTERMEDIATE CHECK SLOT OR STAPLE CHECK SHALL BE INSTALLED EVERY 15' DOWN SLOPES. IN DRAINAGEWAYS, INSTALL CHECK SLOTS EVERY 25' PERPENDICULAR TO FLOW DIRECTION.
- OVERLAPPING JOINT DETAIL SHALL BE USED TO JOIN ROLLS OF EROSION CONTROL BLANKETS TOGETHER FOR EROSION CONTROL BLANKETS ON SLOPES.
- MATERIAL SPECIFICATIONS OF EROSION CONTROL BLANKETS SHALL CONFORM TO TABLE ECB-1.
- ANY AREAS OF SEEDING AND MULCHING DISTURBED IN THE PROCESS OF INSTALLING EROSION CONTROL BLANKETS SHALL BE RESEEDED AND MULCHED.
- STRAW EROSION CONTROL BLANKETS SHALL NOT BE USED WITHIN STREAMS AND DRAINAGE CHANNELS.
- COMPACT ALL TRENCHES.

MAINTENANCE NOTES

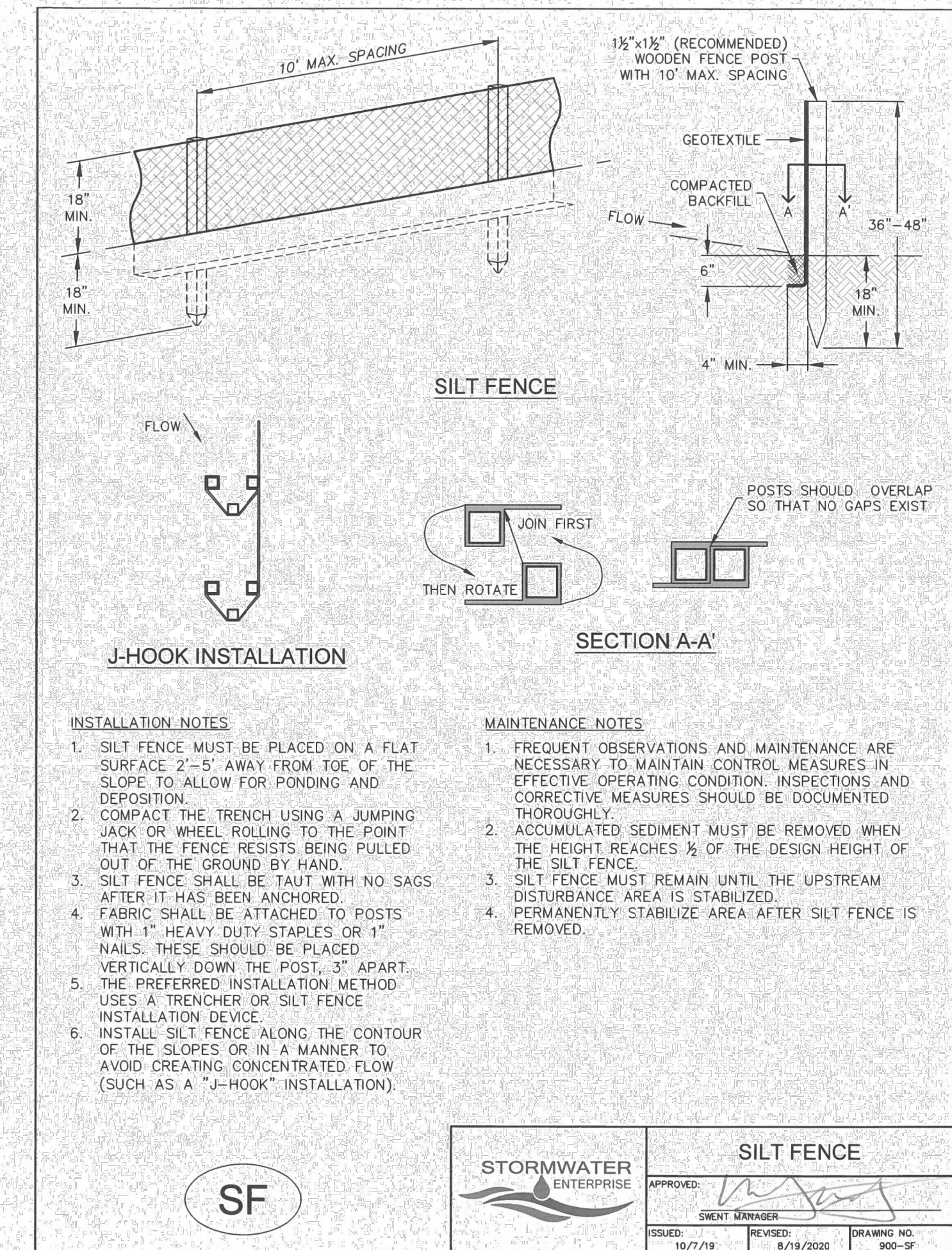
- FREQUENT OBSERVATIONS AND MAINTENANCE ARE NECESSARY TO MAINTAIN CONTROL MEASURES IN EFFECTIVE OPERATING CONDITION. INSPECTIONS AND CORRECTIVE MEASURES SHOULD BE DOCUMENTED THOROUGHLY.
- EROSION CONTROL BLANKETS SHALL BE LEFT IN PLACE TO EVENTUALLY BIODEGRADE. TRM MUST BE REMOVED AT THE DISCRETION OF THE GEC INSPECTOR.
- ANY EROSION CONTROL BLANKET PULLED OUT, TORN, OR OTHERWISE DAMAGED SHALL BE REPAIRED OR REINSTALLED. ANY SUBGRADE AREAS BELOW GEOTEXTILE THAT HAVE ERODED TO CREATE A VOID UNDER THE BLANKET OR THAT REMAIN DEVOID OF GRASS SHALL BE REPAIRED, RESEEDED AND MULCHED AND THE EROSION CONTROL BLANKET REINSTALLED.

TABLE ECB-1, EROSION CONTROL BLANKET MATERIAL SPECIFICATIONS

TYPE	COCONUT CONTENT	STRAW CONTENT	EXCELSIOR CONTENT	RECOMMENDED NETTING
STRAW	-	100%	-	DOUBLE/NATURAL
STRAW-COCONUT	30% MIN.	70% MAX.	-	DOUBLE/NATURAL
COCONUT	100%	-	-	DOUBLE/NATURAL
EXCELSIOR	-	-	100%	DOUBLE/NATURAL

ECB

STORMWATER ENTERPRISE	APPROVED: [Signature]	CLIENT MANAGER
ISSUED: 10/7/19	REVISED: 8/19/2020	DRAWING NO. 900-ECB-2



ENGINEER'S STATEMENT

THIS GRADING AND EROSION CONTROL PLAN WAS PREPARED UNDER MY DIRECTION AND SUPERVISION AND IS CORRECT TO THE BEST OF MY KNOWLEDGE AND BELIEF. SAID PLAN HAS BEEN PREPARED ACCORDING TO THE CRITERIA ESTABLISHED BY THE COUNTY FOR GRADING AND EROSION CONTROL PLANS. I ACCEPT RESPONSIBILITY FOR ANY LIABILITY CAUSED BY ANY NEGLIGENT ACTS, ERRORS OR OMISSIONS ON MY PART IN PREPARING THIS PLANS.

BRYAN T. LAW, P.E. DATE
 COLORADO P.E. 25043
 FOR AND ON BEHALF OF JR ENGINEERING, LLC

UNTIL SUCH TIME AS THESE DRAWINGS ARE APPROVED BY THE APPROPRIATE REVIEWING AGENCIES, OR ENGINEERING APPROVES THEIR USE, THESE DRAWINGS ARE DESIGNATED BY WRITTEN AUTHORIZATION.

PREPARED FOR
 ROI PROPERTY GROUP, LLC
 2495 RIGDON STREET
 NAPA, CALIFORNIA
 (707) 365-6891
 BRADY WILLIAMS

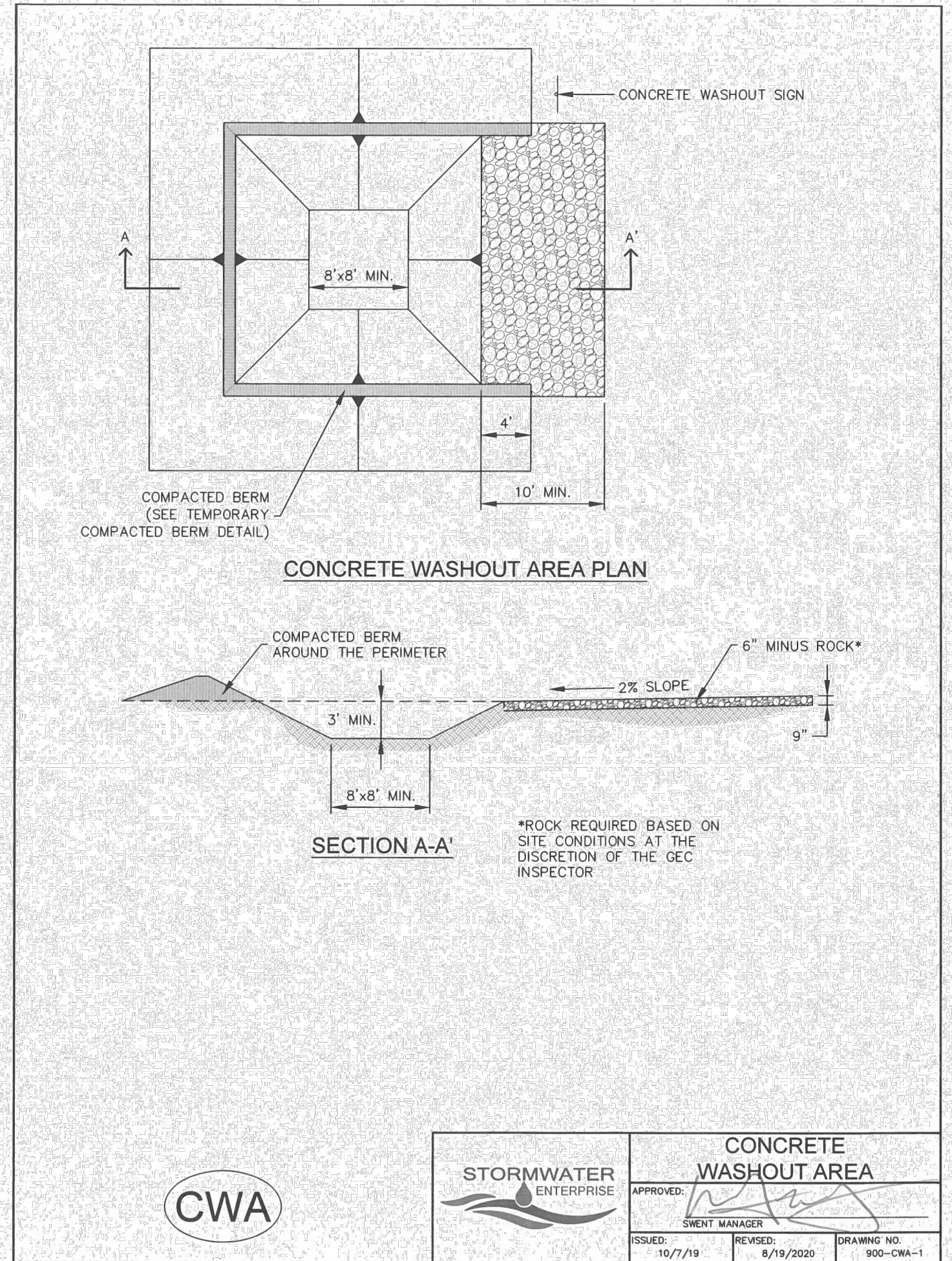
J.R. ENGINEERING
 A Westman Company
 Centennial 300-740-0888 • Colorado Springs 719-588-2583
 Fort Collins 970-491-9888 • www.jrengineering.com

BY	DATE	NO.	REVISION

H-SCALE N/A
 V-SCALE N/A
 DATE 5/3/23
 DESIGNED BY SWW
 DRAWN BY SWW
 CHECKED BY

SADDLEHORN RANCH - FILING 4
 GRADING & EROSION CONTROL DETAILS

SHEET 7 OF 10
 JOB NO. 25142.06



INSTALLATION NOTES

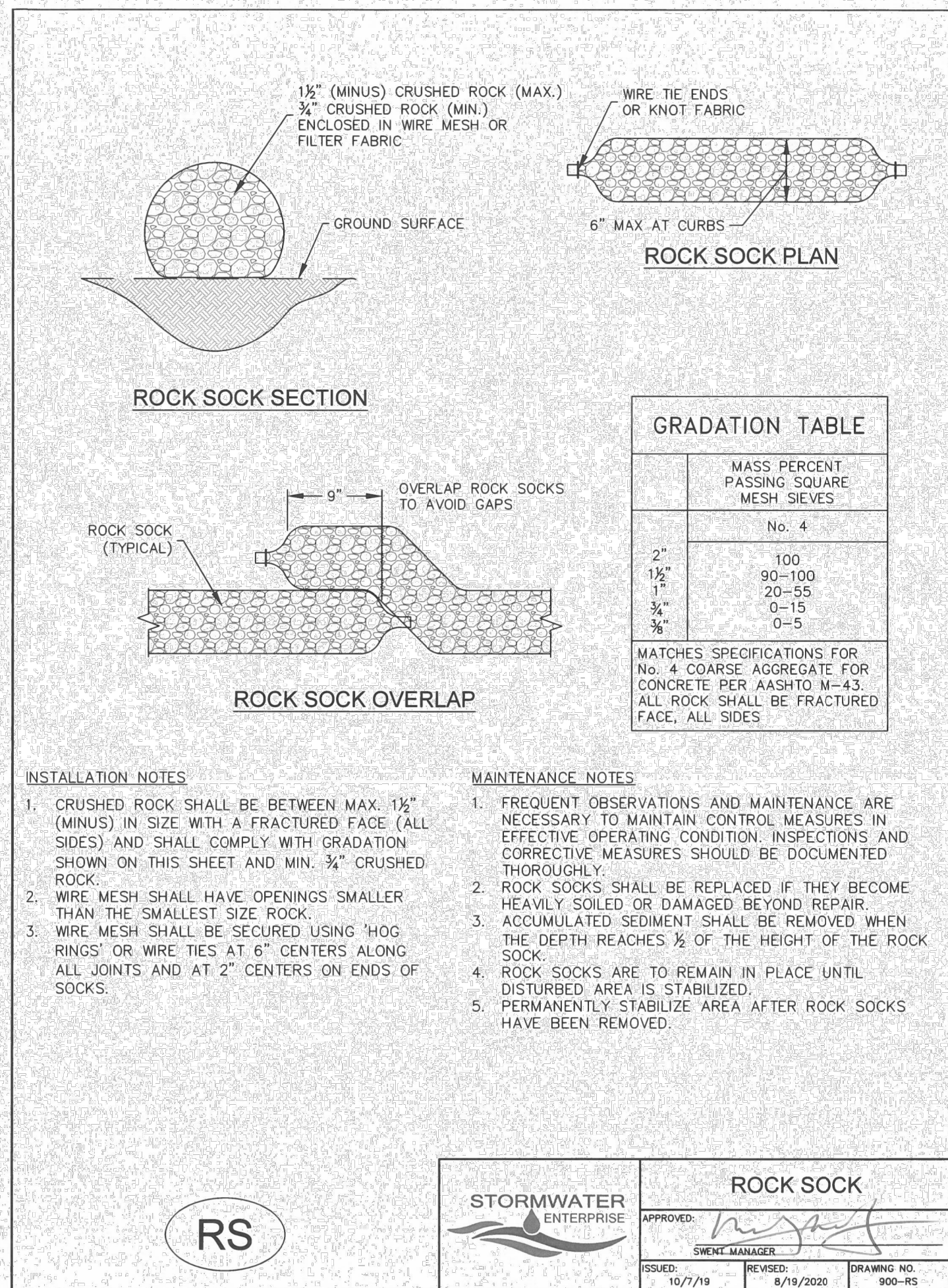
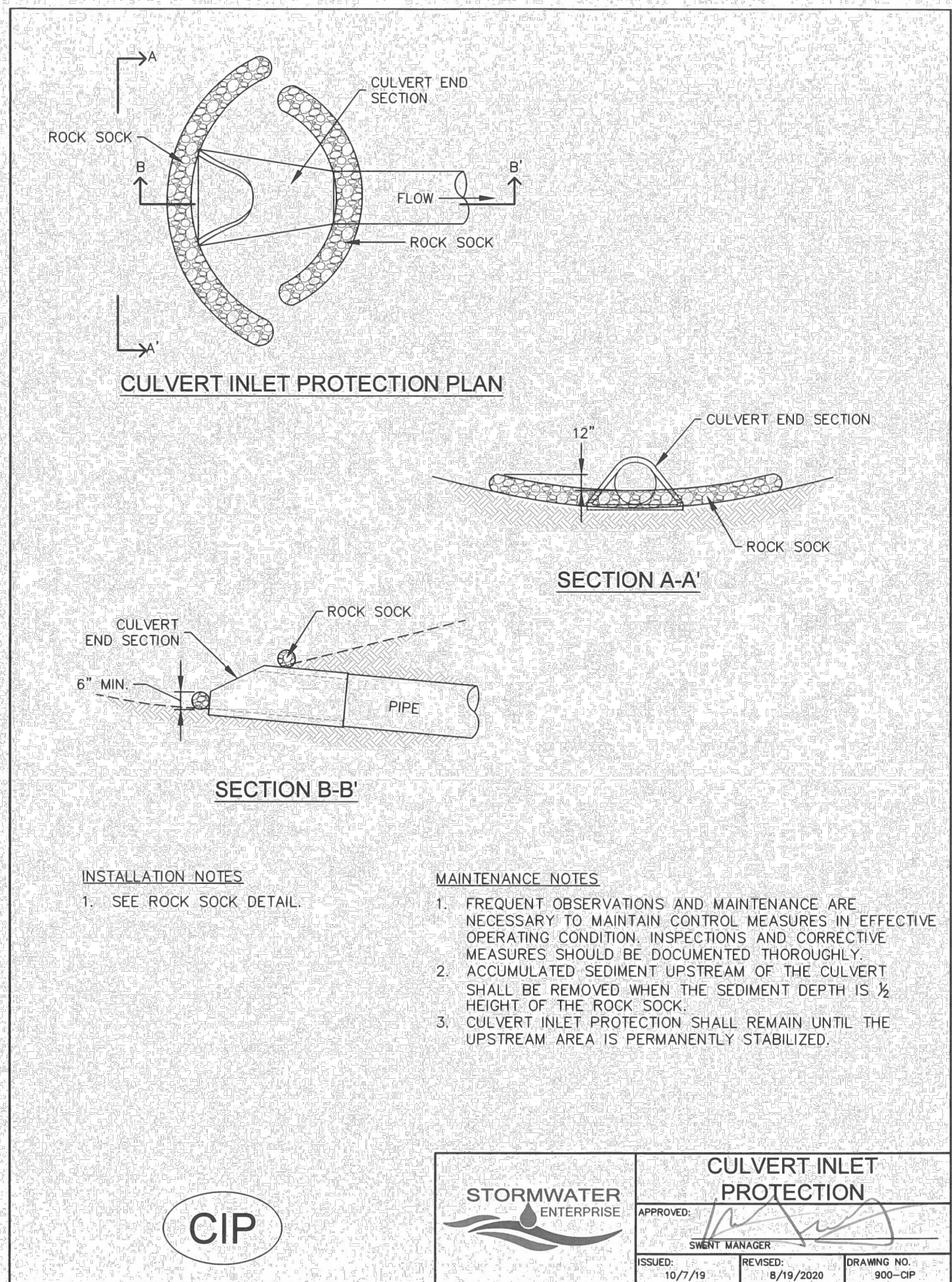
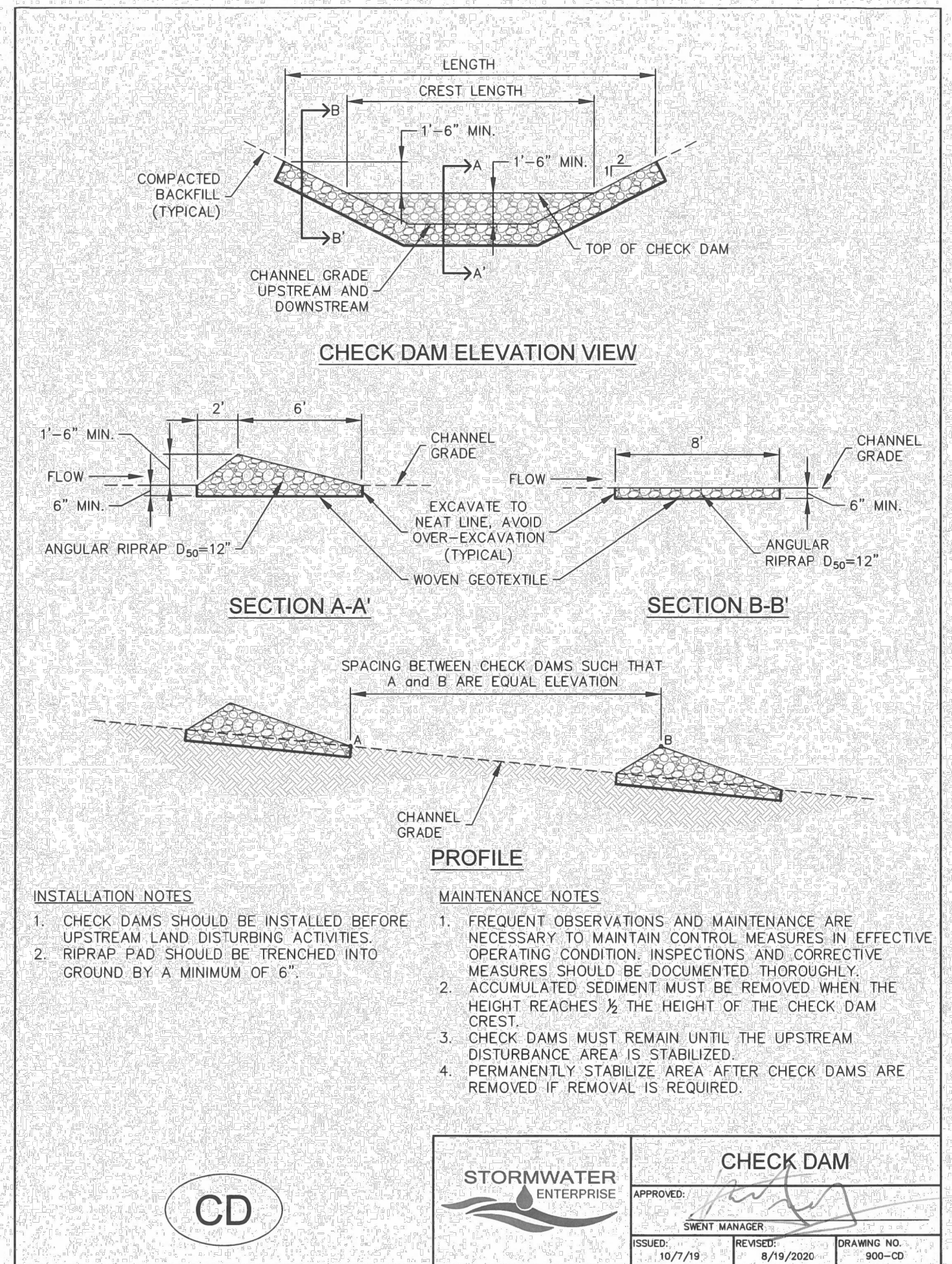
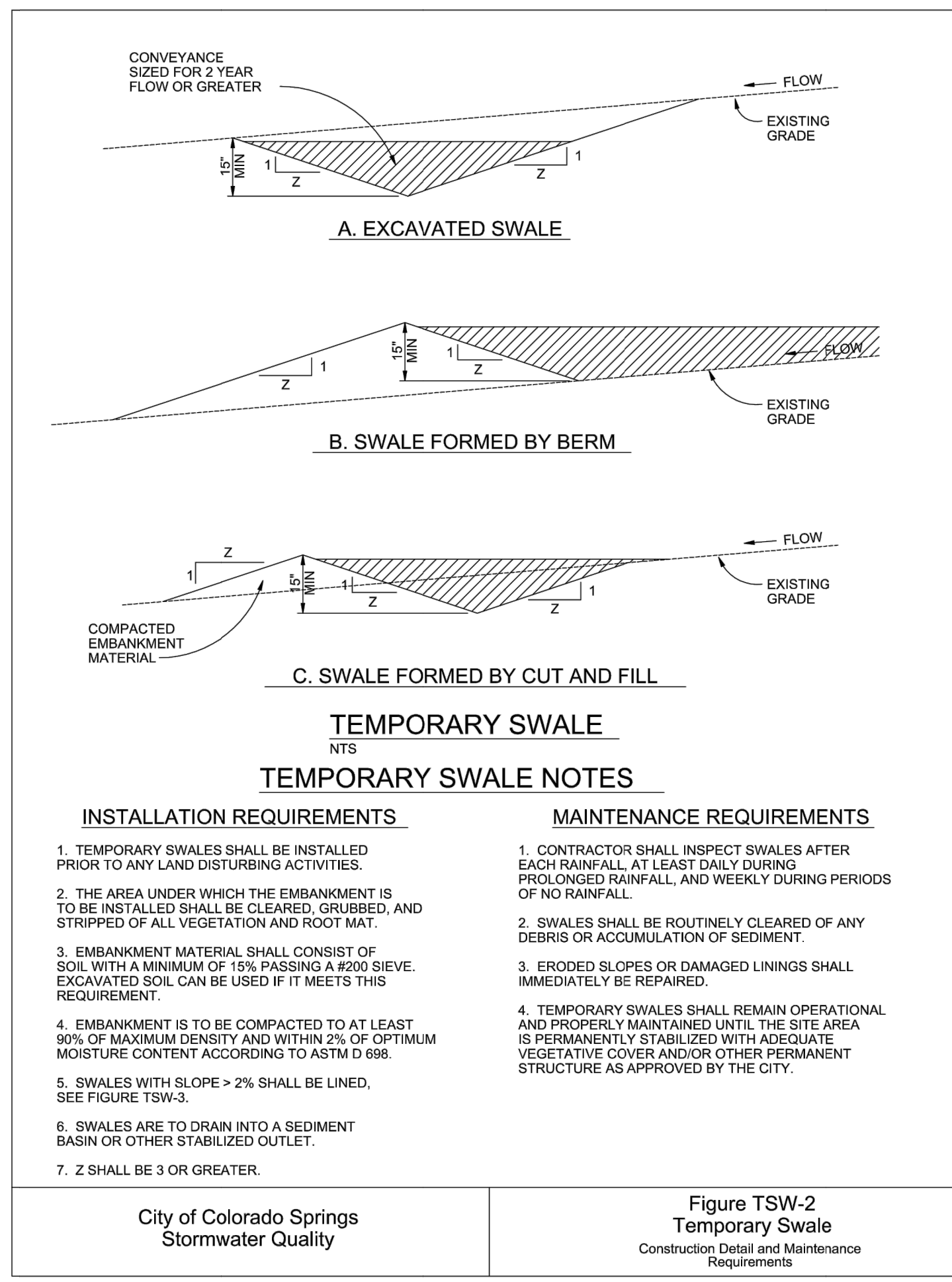
- SEE PLAN VIEW FOR:
 - LOCATION OF CONCRETE WASHOUT AREA
 - LOCATE AT LEAST 50' AWAY FROM STATE WATERS MEASURED HORIZONTALLY.
 - AN IMPERMEABLE LINER (16 MIL. MINIMUM THICKNESS) IS REQUIRED IF CONCRETE WASH AREA IS LOCATED WITHIN 400' OF STATE WATERS OR 1000' OF WELLS OR DRINKING WATER SOURCES.
 - DO NOT LOCATE IN AREAS WHERE SHALLOW GROUNDWATER MAY BE PRESENT.
 - THE CONCRETE WASH AREA SHALL BE INSTALLED PRIOR TO CONCRETE PLACEMENT ON SITE.
 - CONCRETE WASH AREA SHALL INCLUDE A FLAT SUBSURFACE PIT THAT IS AT LEAST 8' BY 8'.
 - BERM SURROUNDING SIDES AND BACK OF CONCRETE WASH AREA SHALL HAVE A MINIMUM HEIGHT OF 2 FEET.
 - CONCRETE WASH AREA ENTRANCE SHALL BE SLOPED 2% TOWARDS THE CONCRETE WASH AREA.
 - SIGNS SHALL BE PLACED AT THE CONCRETE WASH AREA.
 - USE EXCAVATED MATERIAL FOR PERIMETER BERM CONSTRUCTION.


MAINTENANCE NOTES

- FREQUENT OBSERVATIONS AND MAINTENANCE ARE NECESSARY TO MAINTAIN CONTROL MEASURES IN EFFECTIVE OPERATING CONDITION. INSPECTIONS AND CORRECTIVE MEASURES SHOULD BE DOCUMENTED THOROUGHLY.
- THE CONCRETE WASH AREA SHALL BE REPAIRED, CLEANED, OR ENLARGED AS NECESSARY TO MAINTAIN CAPACITY FOR CONCRETE WASTE. CONCRETE MATERIALS ACCUMULATED IN THE PIT SHALL BE REMOVED ONCE THE MATERIALS HAVE REACHED A DEPTH OF 1/2 THE HEIGHT OF THE CONCRETE WASH AREA.
- CONCRETE WASHOUT WATER, WASTED PIECES OF CONCRETE, AND ALL OTHER DEBRIS IN THE SUBSURFACE PIT SHALL BE TRANSPORTED FROM THE JOB SITE IN A WATER-TIGHT CONTAINER AND DISPOSED OF PROPERLY.
- THE CONCRETE WASH AREA SHALL REMAIN IN PLACE UNTIL ALL CONCRETE FOR THE PROJECT IS PLACED.
- PERMANENTLY STABILIZE AREA AFTER CONCRETE WASH AREA IS REMOVED.

CONCRETE WASHOUT AREA

APPROVED: [Signature]
 SHEET MANAGER: [Signature]
 ISSUED: 10/7/19 REVISED: 8/19/2020 DRAWING NO. 900-CWA-2




 Know what's below.
 Call before you dig.

ENGINEER'S STATEMENT

THIS GRADING AND EROSION CONTROL PLAN WAS PREPARED UNDER MY DIRECTION AND SUPERVISION AND IS CORRECT TO THE BEST OF MY KNOWLEDGE AND BELIEF. SAID PLAN HAS BEEN PREPARED ACCORDING TO THE CRITERIA ESTABLISHED BY THE COUNTY FOR GRADING AND EROSION CONTROL PLANS. I ACCEPT RESPONSIBILITY FOR ANY LIABILITY CAUSED BY ANY NEGLIGENT ACTS, ERRORS OR OMISSIONS ON MY PART IN PREPARING THIS PLANS.

BRYAN T. LAW, P.E. DATE
 COLORADO P.E. 25043
 FOR AND ON BEHALF OF JR ENGINEERING, LLC

SHEET 8 OF 10
 JOB NO. 25142.06

UNTIL SUCH TIME AS THESE DRAWINGS ARE APPROVED BY THE APPROPRIATE REVIEWING AGENCIES, OR ENGINEERING APPROVES THEIR USE, THESE DRAWINGS ARE DESIGNATED BY WRITTEN AUTHORIZATION.

PREPARED FOR
ROI PROPERTY GROUP, LLC
 2495 RIDGON STREET
 NAPAJA, CALIFORNIA
 (707) 365-6891
 BRADY WILLIAMS

J.R. ENGINEERING
 A Westman Company
 Centennial 300-740-8888 • Colorado Springs 719-588-2583
 Fort Collins 970-491-9888 • www.jrengineering.com

SEEDING & MULCHING

ALL SOIL TESTING, SOILS AMENDMENT AND FERTILIZER DOCUMENTATION, AND SEED LOAD AND BAG TICKETS MUST BE ADDED TO THE CSWMP.

SOIL PREPARATION

- IN AREAS TO BE SEED, THE UPPER 6 INCHES OF THE SOIL MUST NOT BE HEAVILY COMPACTED, AND SHOULD BE IN FRABLE CONDITION. LESS THAN 85% STANDARD PROCTOR DENSITY IS ACCEPTABLE. AREAS OF COMPACTION OR GENERAL CONSTRUCTION ACTIVITY MUST BE SCARIFIED TO A DEPTH OF 6 TO 12 INCHES PRIOR TO SPREADING TOPSOIL TO BREAK UP COMPACTED LAYERS AND PROVIDE A BLENDING ZONE BETWEEN DIFFERENT SOIL LAYERS.
- AREAS TO BE PLANTED SHALL HAVE AT LEAST 4 INCHES OF TOPSOIL SUITABLE TO SUPPORT PLANT GROWTH.
- THE CITY RECOMMENDS THAT EXISTING AND/OR IMPORTED TOPSOIL BE TESTED TO IDENTIFY SOIL DEFICIENCIES AND ANY SOIL AMENDMENTS NECESSARY TO ADDRESS THESE DEFICIENCIES. SOIL AMENDMENTS AND/OR FERTILIZERS SHOULD BE ADDED TO CORRECT TOPSOIL DEFICIENCIES BASED ON SOIL TESTING RESULTS.
- TOPSOIL SHALL BE PROTECTED DURING THE CONSTRUCTION PERIOD TO RETAIN ITS STRUCTURE AVOID COMPACTION, AND TO PREVENT EROSION AND CONTAMINATION. STRIPPED TOPSOIL MUST BE STORED IN AN AREA AWAY FROM MACHINERY AND CONSTRUCTION OPERATIONS, AND CARE MUST BE TAKEN TO PROTECT THE TOPSOIL AS A VALUABLE COMMODITY. TOPSOIL MUST NOT BE STRIPPED DURING UNDESIRABLE WORKING CONDITIONS (E.G. DURING WET WEATHER OR WHEN SOILS ARE SATURATED). TOPSOIL SHALL NOT BE STORED IN SWALES OR IN AREAS WITH POOR DRAINAGE.

SEEDING

- ALLOWABLE SEED MIXES ARE INCLUDED IN THE CITY OF COLORADO SPRINGS STORMWATER CONSTRUCTION MANUAL. ALTERNATIVE SEED MIXES ARE ACCEPTABLE IF INCLUDED IN AN APPROVED LANDSCAPING PLAN.
- SEED SHOULD BE DRILL-SEED WHENEVER POSSIBLE.
 - *SEED DEPTH MUST BE 1/2 TO 1/4 INCHES WHEN DRILL SEEDING IS USED.
- BROADCAST SEEDING OR HYDRO-SEEDING WITH TACKIFIER MAY BE SUBSTITUTED ON SLOPES STEEPER THAN 3:1 OR ON OTHER AREAS NOT PRACTICAL TO DRILL SEED.
 - *SEEDING RATES MUST BE DOUBLED FOR BROADCAST SEEDING OR INCREASED BY 50% IF USING A BRILLION DRILL OR HYDRO-SEEDING.
 - *BROADCAST SEEDING MUST BE LIGHTLY HAND-RAKED INTO THE SOIL.

MULCHING

- MULCHING SHOULD BE COMPLETED AS SOON AS PRACTICABLE AFTER SEEDING, HOWEVER PLANTED AREAS MUST BE MULCHED NO LATER THAN 14 DAYS AFTER PLANTING.
- MULCHING REQUIREMENTS INCLUDE:
 - *HAY OR STRAW MULCH
 - ONLY CERTIFIED WEED-FREE AND CERTIFIED SEED-FREE MULCH MAY BE USED. MULCH MUST BE APPLIED AT 2 TONS/ACRE AND ADEQUATELY SECURED BY CRIMPING AND/OR TACKIFIER.
 - CRIMPING MUST NOT BE USED ON SLOPES GREATER THAN 3:1 AND MULCH FIBERS MUST BE TUCKED INTO THE SOIL TO A DEPTH OF 3 TO 4 INCHES.
 - TACKIFIER MUST BE USED IN PLACE OF CRIMPING ON SLOPES STEEPER THAN 3:1.
 - *HYDRAULIC MULCHING
 - HYDRAULIC MULCHING IS AN OPTION ON STEEP SLOPES OR WHERE ACCESS IS LIMITED.
 - IF HYDRO-SEEDING IS USED, MULCHING MUST BE APPLIED AS A SEPARATE SECOND OPERATION.
 - WOOD CELLULOSE FIBERS MIXED WITH WATER MUST BE APPLIED AT A RATE OF 2,000 TO 2,500 POUNDS/ACRE, AND TACKIFIER MUST BE APPLIED AT A RATE OF 100 POUNDS/ACRE.
 - *EROSION CONTROL BLANKET
 - EROSION CONTROL BLANKET MAY BE USED IN PLACE OF TRADITIONAL MULCHING METHODS.

SEEDING & MULCHING	
ISSUED: 10/7/19	REVISED: 8/19/2020
DRAWING NO: 900-SW	

VEHICLE TRACKING

Table VT-1

	Case 1	Case 2
Gravel Thickness	9"	3"
Filter Fabric	YES	NO

Figure VT-1 Vehicle Tracking Application Examples

VEHICLE TRACKING

INSTALLATION REQUIREMENTS

- ALL ENTRANCES TO THE CONSTRUCTION SITE ARE TO BE STABILIZED PRIOR TO CONSTRUCTION BEGINNING.
- CONSTRUCTION ENTRANCES ARE TO BE BUILT WITH AN APRON TO ALLOW FOR TURNING TRAFFIC, BUT SHOULD NOT BE BUILT OVER EXISTING PAVEMENT EXCEPT FOR A SLIGHT OVERLAP.
- AREAS TO BE STABILIZED ARE TO BE PROPERLY GRADED AND COMPACTED PRIOR TO LAYING DOWN GEOTEXTILE AND STONE.
- CONSTRUCTION ROADS, PARKING AREAS, LOADING/UNLOADING ZONES, STORAGE AREAS, AND STAGING AREAS ARE TO BE STABILIZED.
- CONSTRUCTION ROADS ARE TO BE BUILT TO CONFORM TO SITE GRADES, BUT SHOULD NOT HAVE SIDE SLOPES OR ROAD GRADES THAT ARE EXCESSIVELY STEEP.

MAINTENANCE REQUIREMENTS

- REGULAR INSPECTIONS ARE TO BE MADE OF ALL STABILIZED AREAS, ESPECIALLY AFTER STORM EVENTS.
- STONES ARE TO BE REAPPLIED PERIODICALLY AND WHEN REPAIR IS NECESSARY.
- SEDIMENT TRACKED ONTO PAVED ROADS IS TO BE REMOVED DAILY BY SHOVELING OR SWEEPING. SEDIMENT IS NOT TO BE WASHED DOWN STORM SEWER DRAINS.
- STORM SEWER INLET PROTECTION IS TO BE IN PLACE, INSPECTED, AND CLEANED IF NECESSARY.
- OTHER ASSOCIATED SEDIMENT CONTROL MEASURES ARE TO BE INSPECTED TO ENSURE GOOD WORKING CONDITION.

Figure VT-2 Vehicle Tracking Application Examples

SWALE LINING

Table TSW-1

Temporary Swale Used as Perimeter Control	Case 1 DA < 1.0 AC	Case 2 DA > 1.0 AC
Continuous Grade	OK ⁽¹⁾	OK ⁽¹⁾
Area of Concentrated Flow	NO ⁽³⁾	NO ⁽²⁾

Figure TSW-1 Temporary Swale Application Examples

SWALE LINING

INSTALLATION REQUIREMENTS

- REFER TO THE EROSION CONTROL BLANKETS FACTSHEET FOR PROPER INSTALLATION OF EROSION CONTROL FABRIC LINING.
- SWALES WITH EASILY ERODIBLE SOILS AND SLOPES LESS THAN 2%, SHALL BE LINED WITH EROSION CONTROL FABRIC.
- VELOCITIES FOR EROSION CONTROL FABRICS SHALL NOT EXCEED 8 FPS. SWALES WITH VELOCITIES GREATER THAN 8 FPS SHALL BE LINED WITH RIP RAP.

MAINTENANCE REQUIREMENTS

- CONTRACTOR SHALL INSPECT SWALE LININGS AFTER EACH RAINFALL AT LEAST DAILY DURING PROLONGED RAINFALL AND WEEKLY DURING PERIODS OF NO RAINFALL.
- DAMAGED LININGS SHALL IMMEDIATELY BE REPAIRED.
- REFER TO THE EROSION CONTROL BLANKETS FACTSHEET FOR PROPER MAINTENANCE.
- DISPLACED RIP RAP OR COARSE AGGREGATE IS TO BE REPLACED AS SOON AS POSSIBLE.
- SWALE LININGS ARE TO REMAIN IN PLACE AND BE PROPERLY MAINTAINED UNTIL THE TEMPORARY SWALE IS REMOVED.

Figure TSW-3 Swale Linings Construction Detail and Maintenance

SLOPE DRAIN

INSTALLATION REQUIREMENTS

- THE SLOPE DRAIN IS TO BE DESIGNED TO CONVEY THE PEAK RUNOFF FOR THE 2-YEAR STORM.
- PIPE MATERIAL MAY INCLUDE CORRUGATED METAL, OR RIGID OR FLEXIBLE PLASTIC.
- EMBANKMENT MATERIAL SHALL CONSIST OF SOIL WITH A MINIMUM OF 15% PASSING A #200 SIEVE. EXCAVATED SOIL CAN BE USED IF IT MEETS THIS REQUIREMENT.
- EMBANKMENT IS TO BE COMPACTED TO AT LEAST 90% OF MAXIMUM DENSITY AND WITHIN 2% OF OPTIMUM MOISTURE CONTENT ACCORDING TO ASTM D 698.
- SLOPE DRAIN SECTIONS ARE TO BE SECURELY FASTENED TOGETHER AND HAVE WATERTIGHT FITTINGS.
- THE OUTLET IS TO BE STABILIZED AND, UNLESS THE DRAIN DISCHARGES DIRECTLY TO A SEDIMENT BASIN, A TEMPORARY SURFACE IS TO BE PROVIDED TO CONVEY FLOWS DOWN STREAM.
- IMMEDIATELY STABILIZE ALL AREAS DISTURBED BY INSTALLATION OR REMOVAL OF THE PIPE SLOPE DRAIN.

MAINTENANCE REQUIREMENTS

- INLET AND OUTLET POINTS ARE TO BE CHECKED REGULARLY, AND AFTER HEAVY STORMS FOR CLOGGING AND OVERCHARGING. ANY BREAKS IN THE PIPE ARE TO BE PROMPTLY REPAIRED, AND CLOGS REMOVED AS NEEDED.
- WATER IS NOT TO BYPASS OR UNDERCUT THE INLET OR PIPE. IF THESE PROBLEMS DO EXIST, THE HEADWALL NEEDS TO BE REINFORCED WITH COMPACT EARTH OR SANDBAGS.
- THE OUTLET POINT IS TO BE FREE OF EROSION, AND, IF NECESSARY, ADDITIONAL OUTLET PROTECTION SHOULD BE INSTALLED.
- CONSTRUCTION TRAFFIC IS NOT TO CROSS THE SLOPE DRAIN AND MATERIALS ARE NOT TO BE PLACED ON IT.
- THE SLOPE DRAIN IS TO REMAIN IN PLACE UNTIL THE SLOPE HAS BEEN COMPLETELY STABILIZED OR UP TO 30 DAYS AFTER PERMANENT SLOPE STABILIZATION.

Figure SD-1 Slope Drain Construction Detail and Maintenance Requirements

ENGINEER'S STATEMENT

THIS GRADING AND EROSION CONTROL PLAN WAS PREPARED UNDER MY DIRECTION AND SUPERVISION AND IS CORRECT TO THE BEST OF MY KNOWLEDGE AND BELIEF. SAID PLAN HAS BEEN PREPARED ACCORDING TO THE CRITERIA ESTABLISHED BY THE COUNTY FOR GRADING AND EROSION CONTROL PLANS. I ACCEPT RESPONSIBILITY FOR ANY LIABILITY CAUSED BY ANY NEGLIGENT ACTS, ERRORS OR OMISSIONS ON MY PART IN PREPARING THIS PLANS.

UNTIL SUCH TIME AS THESE DRAWINGS ARE APPROVED BY THE APPROPRIATE REVIEWING AGENCIES, OR ENGINEERING APPROVES THEIR USE, THESE DRAWINGS ARE DESIGNATED BY WRITTEN AUTHORIZATION.

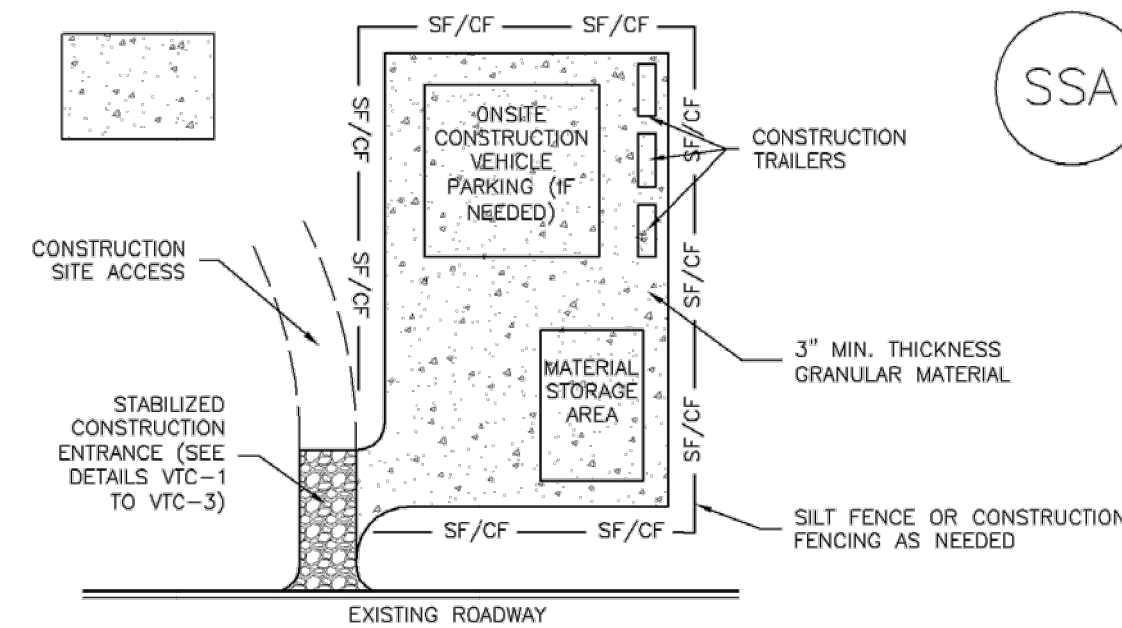
PREPARED FOR
 ROI PROPERTY GROUP, LLC
 2495 RIGDON STREET
 NAPA, CALIFORNIA
 (707) 365-6891
 BRADY WILLIAMS

J.R. ENGINEERING
 A Westman Company
 Centennial 300-740-9888 • Colorado Springs 719-583-2583
 Fort Collins 970-491-9888 • www.jrengineering.com

BY	DATE	No.	REVISION

SADDLEHORN RANCH - FILING 4
 GRADING & EROSION CONTROL DETAILS

Stabilized Staging Area (SSA) SM-6



SSA-1. STABILIZED STAGING AREA

STABILIZED STAGING AREA INSTALLATION NOTES

- SEE PLAN VIEW FOR
-LOCATION OF STAGING AREA(S).
-CONTRACTOR MAY ADJUST LOCATION AND SIZE OF STAGING AREA WITH APPROVAL FROM THE LOCAL JURISDICTION.
- STABILIZED STAGING AREA SHOULD BE APPROPRIATE FOR THE NEEDS OF THE SITE. OVERSIZING RESULTS IN A LARGER AREA TO STABILIZE FOLLOWING CONSTRUCTION.
- STAGING AREA SHALL BE STABILIZED PRIOR TO OTHER OPERATIONS ON THE SITE.
- THE STABILIZED STAGING AREA SHALL CONSIST OF A MINIMUM 3" THICK GRANULAR MATERIAL.
- UNLESS OTHERWISE SPECIFIED BY LOCAL JURISDICTION, ROCK SHALL CONSIST OF DOT SECT. #703, AASHTO #3 COARSE AGGREGATE OR 6" (MINUS) ROCK.
- ADDITIONAL PERIMETER BMPs MAY BE REQUIRED INCLUDING BUT NOT LIMITED TO SILT FENCE AND CONSTRUCTION FENCING.

STABILIZED STAGING AREA MAINTENANCE NOTES

- INSPECT BMPs EACH WORKDAY, AND MAINTAIN THEM IN EFFECTIVE OPERATING CONDITION. MAINTENANCE OF BMPs SHOULD BE PROACTIVE, NOT REACTIVE. INSPECT BMPs AS SOON AS POSSIBLE (AND ALWAYS WITHIN 24 HOURS) FOLLOWING A STORM THAT CAUSES SURFACE EROSION, AND PERFORM NECESSARY MAINTENANCE.
- FREQUENT OBSERVATIONS AND MAINTENANCE ARE NECESSARY TO MAINTAIN BMPs IN EFFECTIVE OPERATING CONDITION. INSPECTIONS AND CORRECTIVE MEASURES SHOULD BE DOCUMENTED THOROUGHLY.
- WHERE BMPs HAVE FAILED, REPAIR OR REPLACEMENT SHOULD BE INITIATED UPON DISCOVERY OF THE FAILURE.
- ROCK SHALL BE REAPPLIED OR REGRADED AS NECESSARY IF RUTTING OCCURS OR UNDERLYING SUBGRADE BECOMES EXPOSED.

November 2010 Urban Drainage and Flood Control District SSA-3
Urban Storm Drainage Criteria Manual Volume 3

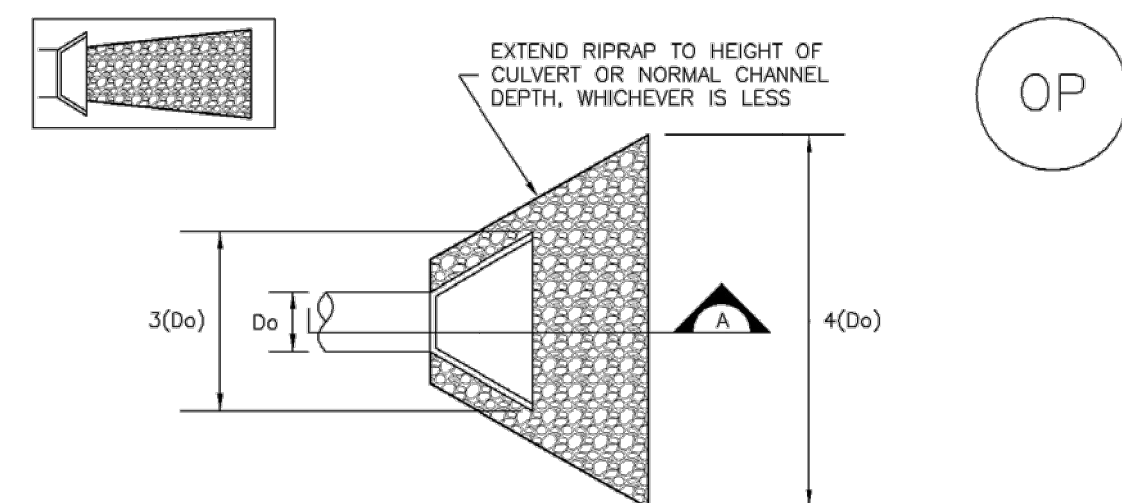
SM-6 Stabilized Staging Area (SSA)

STABILIZED STAGING AREA MAINTENANCE NOTES

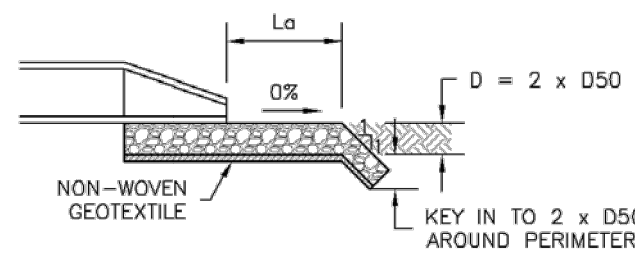
- STABILIZED STAGING AREA SHALL BE ENLARGED IF NECESSARY TO CONTAIN PARKING, STORAGE, AND UNLOADING/LOADING OPERATIONS.
 - THE STABILIZED STAGING AREA SHALL BE REMOVED AT THE END OF CONSTRUCTION. THE GRANULAR MATERIAL SHALL BE REMOVED OR, IF APPROVED BY THE LOCAL JURISDICTION, USED ON SITE, AND THE AREA COVERED WITH TOPSOIL, SEEDED AND MULCHED OR OTHERWISE STABILIZED IN A MANNER APPROVED BY LOCAL JURISDICTION.
- NOTE: MANY MUNICIPALITIES PROHIBIT THE USE OF RECYCLED CONCRETE AS GRANULAR MATERIAL FOR STABILIZED STAGING AREAS DUE TO DIFFICULTIES WITH RE-ESTABLISHMENT OF VEGETATION IN AREAS WHERE RECYCLED CONCRETE WAS PLACED.
- NOTE: MANY JURISDICTIONS HAVE BMP DETAILS THAT VARY FROM UDFCD STANDARD DETAILS. CONSULT WITH LOCAL JURISDICTIONS AS TO WHICH DETAIL SHOULD BE USED WHEN DIFFERENCES ARE NOTED.
- (DETAILS ADAPTED FROM DOUGLAS COUNTY, COLORADO, NOT AVAILABLE IN AUTOCAD)

SSA-4 Urban Drainage and Flood Control District November 2010
Urban Storm Drainage Criteria Manual Volume 3

EC-8 Temporary Outlet Protection (TOP)



TEMPORARY OUTLET PROTECTION PLAN



SECTION A

PIPE DIAMETER, D ₀ (INCHES)	DISCHARGE, Q (CFS)	APRON LENGTH, L _a (FT)	RIPRAP D ₅₀ DIAMETER MIN (INCHES)
8	2.5	5	4
	5	10	6
12	5	10	4
	10	13	6
	20	16	9
18	30	23	12
	40	26	16
	30	16	9
	40	26	9
24	60	30	12
	60	30	16
	60	30	16

OP-1. TEMPORARY OUTLET PROTECTION

TOP-2 Urban Drainage and Flood Control District November 2010
Urban Storm Drainage Criteria Manual Volume 3

Temporary Outlet Protection (TOP) EC-8

TEMPORARY OUTLET PROTECTION INSTALLATION NOTES

- SEE PLAN VIEW FOR
-LOCATION OF OUTLET PROTECTION.
-DIMENSIONS OF OUTLET PROTECTION.
- DETAIL IS INTENDED FOR PIPES WITH SLOPE < 10%. ADDITIONAL EVALUATION OF RIPRAP SIZING AND OUTLET PROTECTION DIMENSIONS REQUIRED FOR STEEPER SLOPES.
- TEMPORARY OUTLET PROTECTION INFORMATION IS FOR OUTLETS INTENDED TO BE UTILIZED LESS THAN 2 YEARS.

TEMPORARY OUTLET PROTECTION INSPECTION AND MAINTENANCE NOTES

- INSPECT BMPs EACH WORKDAY, AND MAINTAIN THEM IN EFFECTIVE OPERATING CONDITION. MAINTENANCE OF BMPs SHOULD BE PROACTIVE, NOT REACTIVE. INSPECT BMPs AS SOON AS POSSIBLE (AND ALWAYS WITHIN 24 HOURS) FOLLOWING A STORM THAT CAUSES SURFACE EROSION, AND PERFORM NECESSARY MAINTENANCE.
- FREQUENT OBSERVATIONS AND MAINTENANCE ARE NECESSARY TO MAINTAIN BMPs IN EFFECTIVE OPERATING CONDITION. INSPECTIONS AND CORRECTIVE MEASURES SHOULD BE DOCUMENTED THOROUGHLY.
- WHERE BMPs HAVE FAILED, REPAIR OR REPLACEMENT SHOULD BE INITIATED UPON DISCOVERY OF THE FAILURE.

NOTE: MANY JURISDICTIONS HAVE BMP DETAILS THAT VARY FROM UDFCD STANDARD DETAILS. CONSULT WITH LOCAL JURISDICTIONS AS TO WHICH DETAIL SHOULD BE USED WHEN DIFFERENCES ARE NOTED.

(DETAILS ADAPTED FROM AURORA, COLORADO AND PREVIOUS VERSION OF VOLUME 3, NOT AVAILABLE IN AUTOCAD)

November 2010 Urban Drainage and Flood Control District TOP-3
Urban Storm Drainage Criteria Manual Volume 3

UNTIL SUCH TIME AS THESE DRAWINGS ARE APPROVED BY THE APPROPRIATE REVIEWING AGENCIES, OR ENGINEERING APPROVES THEIR USE, THESE DRAWINGS ARE DESIGNATED BY WRITTEN AUTHORIZATION.

PREPARED FOR
ROI PROPERTY GROUP, LLC
2495 RIGDON STREET
NAPA, CALIFORNIA
(707) 365-6891
BRADY WILLIAMS

J.R. ENGINEERING
A Westman Company
Central 303-740-9888 • Colorado Springs 719-588-2583
Fort Collins 970-491-9888 • www.jrengineering.com

No.	REVISION	BY	DATE	DESIGNED BY	DRAWN BY	CHECKED BY	H-SCALE	V-SCALE	DATE
							N/A	N/A	5/3/23
				SWW	SWW				



ENGINEER'S STATEMENT
THIS GRADING AND EROSION CONTROL PLAN WAS PREPARED UNDER MY DIRECTION AND SUPERVISION AND IS CORRECT TO THE BEST OF MY KNOWLEDGE AND BELIEF. SAID PLAN HAS BEEN PREPARED ACCORDING TO THE CRITERIA ESTABLISHED BY THE COUNTY FOR GRADING AND EROSION CONTROL PLANS. I ACCEPT RESPONSIBILITY FOR ANY LIABILITY CAUSED BY ANY NEGLIGENT ACTS, ERRORS OR OMISSIONS ON MY PART IN PREPARING THIS PLANS.

BRYAN T. LAW, P.E. DATE
COLORADO P.E. 25043
FOR AND ON BEHALF OF JR ENGINEERING, LLC

SADDLEHORN RANCH - FILING 4
GRADING & EROSION CONTROL DETAILS
SHEET 10 OF 10
JOB NO. 25142.06