

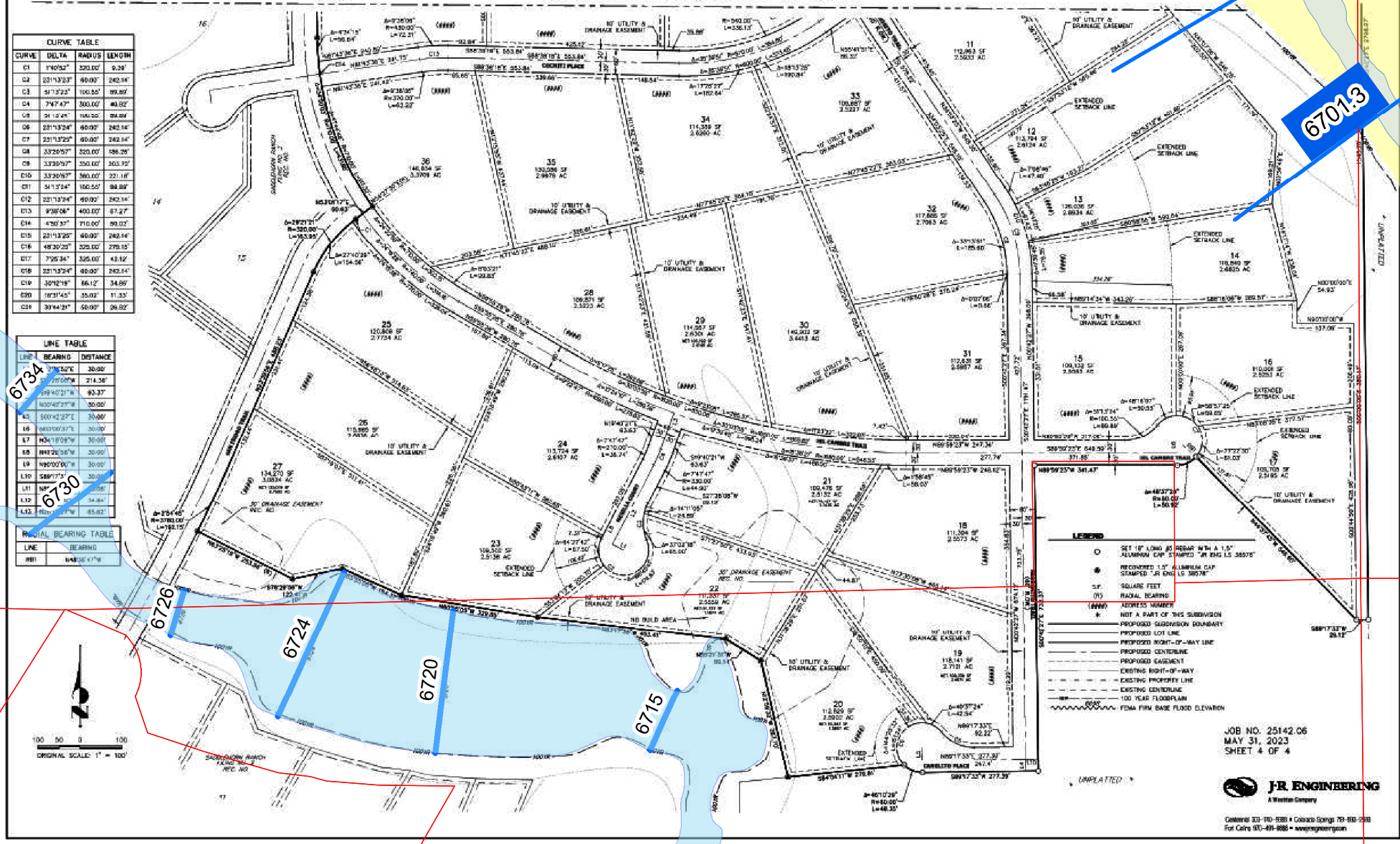
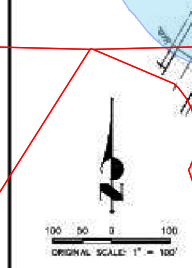
SADDLEHORN RANCH FILING NO.4

A PARCEL OF LAND LOCATED IN SECTION 3
TOWNSHIP 13 SOUTH, RANGE 64 WEST OF THE 6TH PRINCIPAL MERIDIAN
COUNTY OF EL PASO, STATE OF COLORADO

CURVE	DELTA	RADIUS	LENGTH
C1	1°40'52"	533.00	6.29
C2	2°11'32.3"	46.00	240.44
C3	51°13'23"	100.55	99.89
C4	7°47'47"	300.00	40.02
C5	51°13'24"	100.55	99.89
C6	2°11'32.3"	46.00	240.44
C7	2°11'32.3"	46.00	240.44
C8	3°32'59.7"	350.00	303.72
C9	3°32'59.7"	350.00	303.72
C10	3°32'59.7"	350.00	303.72
C11	51°13'24"	100.55	99.89
C12	2°11'32.3"	46.00	240.44
C13	9°38'08"	400.00	87.27
C14	4°50'57"	710.00	89.02
C15	2°11'32.3"	46.00	240.44
C16	4°50'57"	710.00	89.02
C17	7°25'34"	325.00	48.14
C18	2°11'32.3"	46.00	240.44
C19	3°21'18"	56.12	34.89
C20	1°21'44.5"	35.00	11.33
C21	3°14'41"	50.00	26.92

LINE	BEARING	DISTANCE
1	7°52'E	30.89
2	79°09"W	214.36
3	89°40'21"W	63.37
4	100°40'27"W	30.89
5	50°42'27'E	30.89
6	90°00'00"E	30.89
7	104°19'09"W	30.89
8	89°12'58"W	30.89
9	39°50'00"W	30.89
10	58°17'51"W	30.89
11	N8°11'00"W	30.89
12	S4°34'34"W	30.89
13	S89°17'51"W	65.82

LINE	BEARING
1	S48°30'47"W



LEGEND

- SET 1/4" LONG BY 3/8" DIA W x 1/4" ALUMINUM CAP STAMPED "R ENG LS 38576"
- RECORDED 1/4" ALUMINUM CAP STAMPED "R ENG LS 38576"
- S.F. SQUARE FEET
- (B) RADIAL BEARING
- ADJACENT NUMBER
- NOT A PART OF THIS SUBDIVISION
- PROPOSED SUBDIVISION BOUNDARY
- PROPOSED LOT LINE
- PROPOSED RIGHT-OF-WAY LINE
- PROPOSED CENTERLINE
- PROPOSED EASEMENT
- EXISTING RIGHT-OF-WAY
- EXISTING PROPERTY LINE
- EXISTING CENTERLINE
- 100 YEAR FLOODPLAIN
- ~ FEMA FIRM BASE FLOOD ELEVATION

JOB NO. 25142.06
MAY 31, 2023
SHEET 4 OF 4



Central 937-700-8380 • Colorado Springs 719-536-2333
Fort Collins 970-491-8886 • www.jrengineering.com