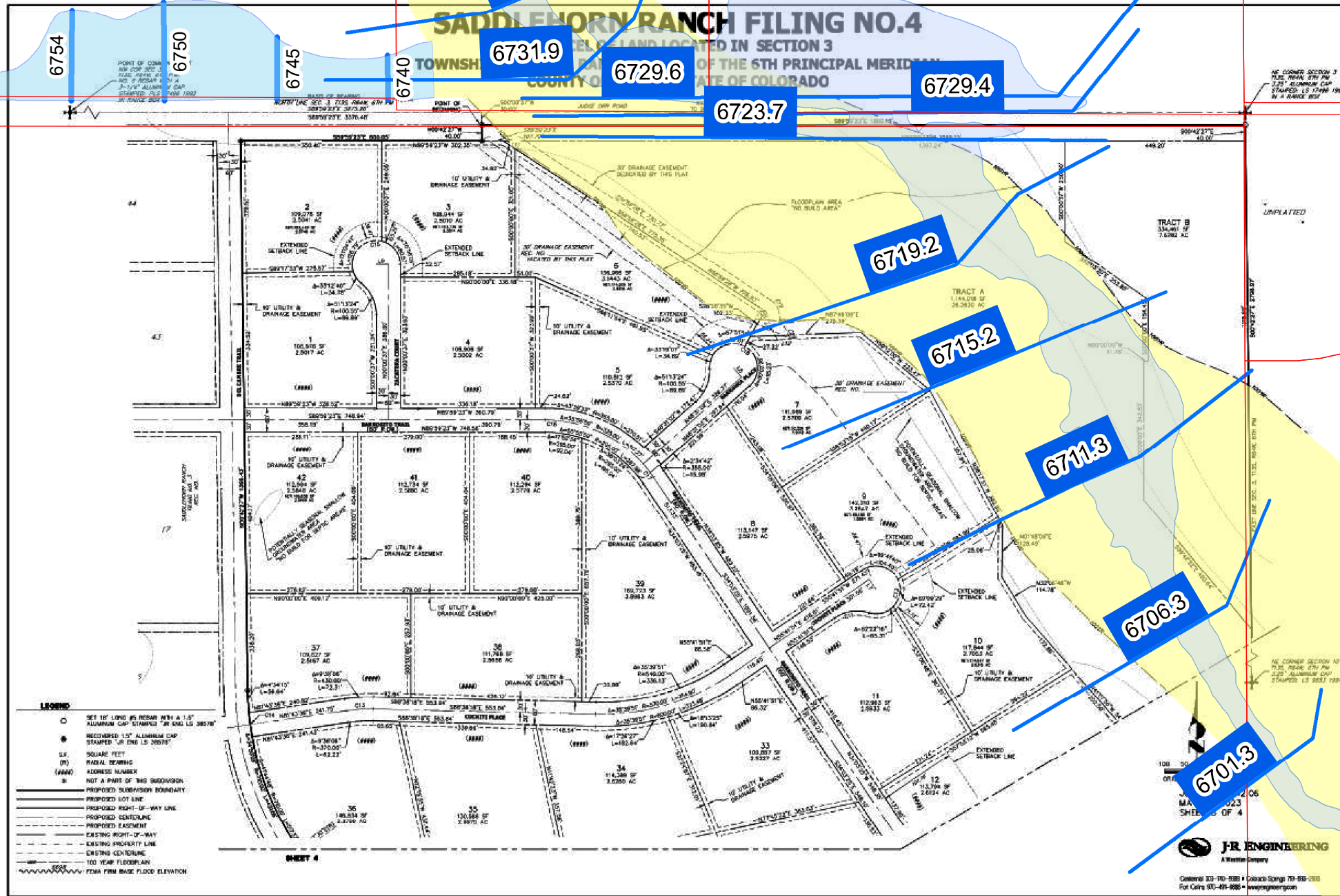
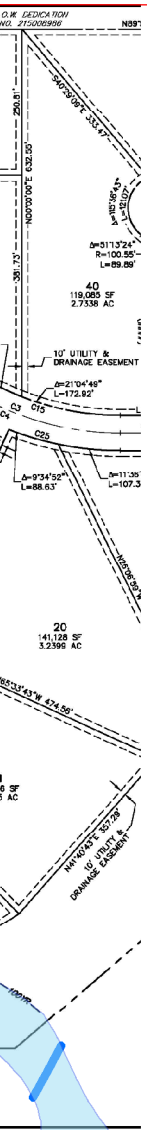


FILING SECTION 3
6TH PRINCIPAL MERIDIAN
COLORADO



SADDLEHORN RANCH FILING NO. 4
SADDLEHORN RANCH SUBDIVISION
LAND LOCATED IN SECTION 3
TOWNSHIP 37S RANGE 67W COUNTY OF GARFIELD STATE OF COLORADO

NE CORNER SECTION 3
7.25' ROUND CTR. P.W.
2.25' ALUMINUM CAP
STAMPED: 12 17 1992
BY A RANGE SURV.

UNPLATTED

NE CORNER SECTION 3
7.25' ROUND CTR. P.W.
2.25' ALUMINUM CAP
STAMPED: 12 17 1992
BY A RANGE SURV.

J.R. ENGINEERING
A Member Company

Central 837-710-8388 • Lakewood Springs, CO 80123-2033
Fax: 837-491-8886 • www.jrengineering.com

6759

6754

6750

6745

6740

6738.3

6734.3

6731.9

6729.6

6723.7

6729.4

6719.2

6715.2

6711.3

6706.3

6701.3

6695.6

6738

6734

12
115,534 SF
2.6823 AC