

FALCON FIRE PROTECTION DISTRICT
Administration Office
7030 Old Meridian Road * Falcon, Colorado 80831



July 20, 2018

Marc A. Whorton, P.E.
Project Manager
Classic Consulting
619 N. Cascade Ave. Suite 200
Colorado Springs, CO 80903
719-785-2802 (Desk)
719-785-0799 (Fax)
719-492-1220 (Cell)
Mwhorton@Classicconsulting.net

RE: Paint Brush Hills Filing 13E- Emergency Service Commitment Letter

Dear Mr. Whorton:

It is our understanding that the Paint Brush Hills Development is proposing 158 single family lots in Falcon, Colorado [Filing 13E]. The location of the subdivision is North/North West of Londonderry Drive..

The Falcon Fire Department will provide fire prevention, fire suppression, emergency rescue, emergency medical, ambulance and emergency hazardous materials services (collectively, "Emergency Services") to the Subdivision. Service is contingent on the developer meeting the following requirements:

Falcon Fire Department will require the subdivision to meet all applicable fire code requirements at the time of the construction.

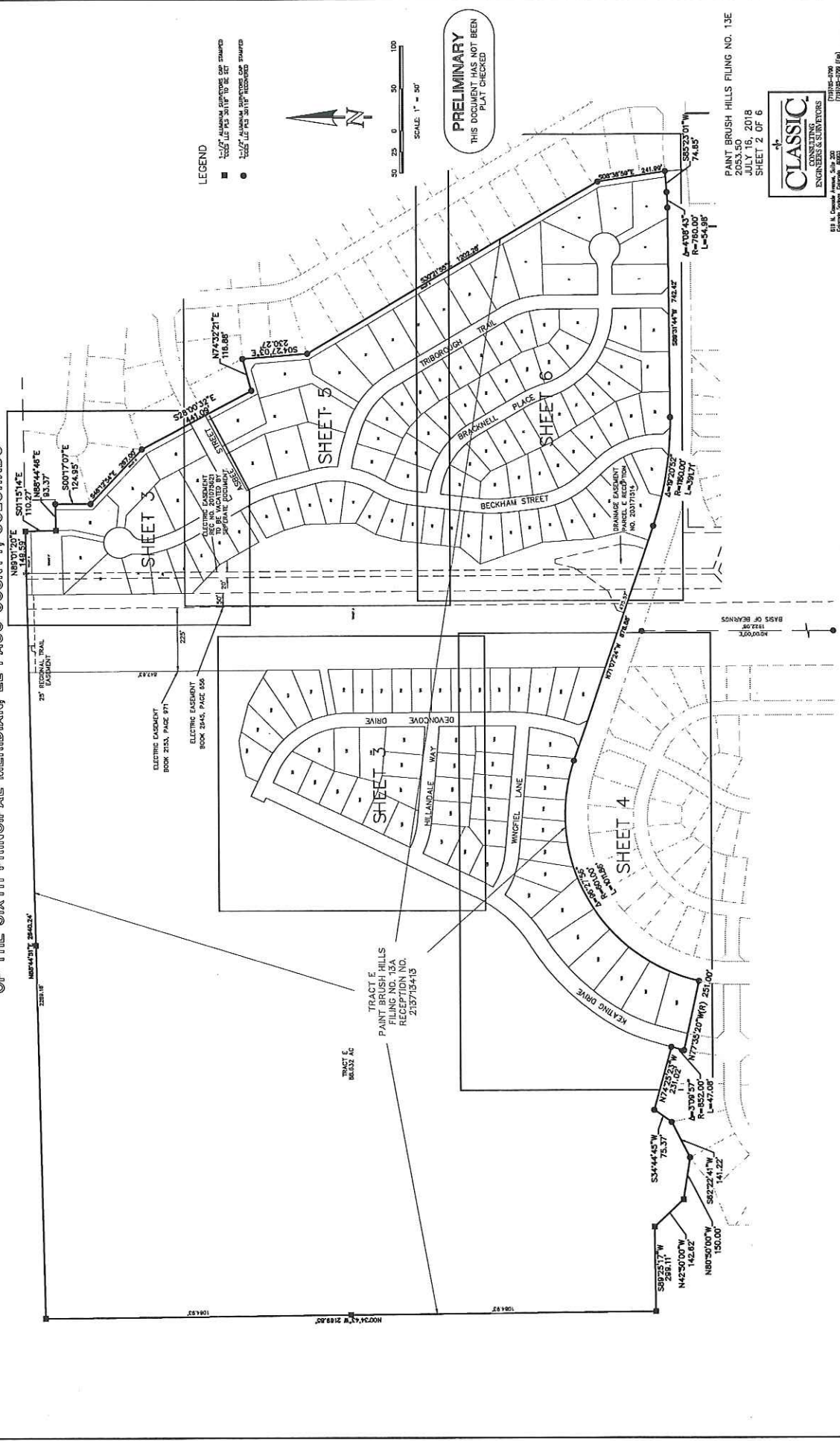
If additional information is required, please contact our office at (719) 495-4050.

Sincerely,

Jeff Petersma, Deputy Fire Chief
Falcon Fire Protection District

PAIN T BRUSH HILLS FILING NO. 13E

A REPLAT OF TRACT E AS PLATTED IN PAINT BRUSH HILLS FILING NO. 13A, RECORDED UNDER RECEPTION NO. 213718413, BEING A PORTION OF THE WEST HALF OF SECTION 25 AND THE EAST HALF OF SECTION 26, TOWNSHIP 12 SOUTH, RANGE 65 WEST OF THE SIXTH PRINCIPAL MERIDIAN, EL PASO COUNTY, COLORADO



LEGEND

- 1/2" ELECTRIC EASEMENT AS SHOWN ON THE RECORDED PLAT
- 1/2" DRAINAGE EASEMENT AS SHOWN ON THE RECORDED PLAT



SCALE: 1" = 30'

PRELIMINARY
THIS DOCUMENT HAS NOT BEEN
PLAT CHECKED

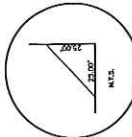
PAINT BRUSH HILLS FILING NO. 13E
20533.90
JULY 16, 2018
SHEET 2 OF 6



613 H. Campbell Avenue, Suite 202
Colorado Springs, Colorado 80905
(719) 575-0790
(719) 575-0796 (fax)

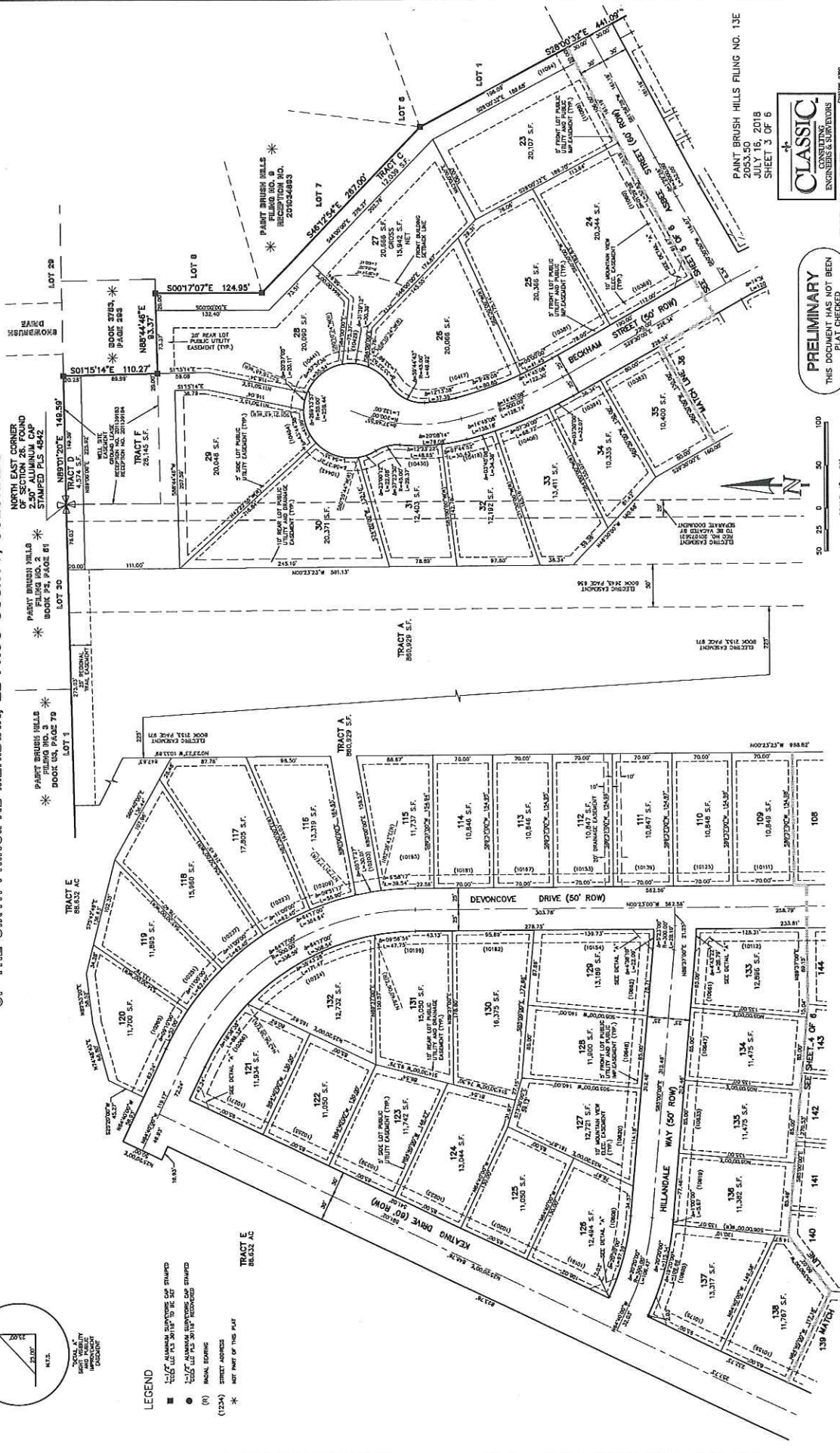
PAIN T BRUSH HILLS FILING NO. 13E

A REPLAT OF TRACT E AS PLATTED IN PAIN T BRUSH HILLS FILING NO. 13A, RECORDED UNDER RECEPTION NO. 213713413, BEING A PORTION OF THE WEST HALF OF SECTION 25 AND THE EAST HALF OF SECTION 26, TOWNSHIP 12 SOUTH, RANGE 65 WEST OF THE SIXTH PRINCIPAL MERIDIAN, EL PASO COUNTY, COLORADO



LEGEND

- 1/2" ALUMINUM SURVEYING CAP STAMPED
- 1/2" ALUMINUM CAP STAMPED
- (R) BOUNDARY
- (1254) STREET ADDRESS
- * PART OF THIS PLAT



PRELIMINARY
THIS DOCUMENT HAS NOT BEEN
PLAY CHECKED

SCALE: 1" = 50'

CLASSIC
CONSULTING
ENGINEERS & SURVEYORS

20533.50
JULY 16, 2018
SHEET 3 OF 6

PAIN T BRUSH HILLS FILING NO. 13E

NORTH EAST CORNER
OF SECTION 25, FOUND
2.50" ALUMINUM CAP
STAMPED PLS 4542

PAIN T BRUSH HILLS
FILING NO. 13
BOOK P.3, PAGE 79

PAIN T BRUSH HILLS
FILING NO. 13
BOOK P.3, PAGE 81

PAIN T BRUSH HILLS
FILING NO. 13
BOOK P.3, PAGE 83

PAIN T BRUSH HILLS
FILING NO. 13
BOOK P.3, PAGE 85

PAIN T BRUSH HILLS
FILING NO. 13
BOOK P.3, PAGE 87

PAIN T BRUSH HILLS
FILING NO. 13
BOOK P.3, PAGE 89

TRACT A
860,929 S.F.

TRACT B
860,929 S.F.

TRACT C
860,929 S.F.

TRACT D
860,929 S.F.

TRACT E
860,929 S.F.

TRACT F
860,929 S.F.

TRACT G
860,929 S.F.

TRACT H
860,929 S.F.

TRACT I
860,929 S.F.

TRACT J
860,929 S.F.

TRACT K
860,929 S.F.

TRACT L
860,929 S.F.

TRACT M
860,929 S.F.

TRACT N
860,929 S.F.

TRACT O
860,929 S.F.

TRACT P
860,929 S.F.

TRACT Q
860,929 S.F.

TRACT R
860,929 S.F.

TRACT S
860,929 S.F.

TRACT T
860,929 S.F.

TRACT U
860,929 S.F.

TRACT V
860,929 S.F.

TRACT W
860,929 S.F.

TRACT X
860,929 S.F.

TRACT Y
860,929 S.F.

TRACT Z
860,929 S.F.

TRACT AA
860,929 S.F.

TRACT AB
860,929 S.F.

TRACT AC
860,929 S.F.

TRACT AD
860,929 S.F.

TRACT AE
860,929 S.F.

TRACT AF
860,929 S.F.

TRACT AG
860,929 S.F.

TRACT AH
860,929 S.F.

TRACT AI
860,929 S.F.

TRACT AJ
860,929 S.F.

TRACT AK
860,929 S.F.

TRACT AL
860,929 S.F.

TRACT AM
860,929 S.F.

TRACT AN
860,929 S.F.

TRACT AO
860,929 S.F.

TRACT AP
860,929 S.F.

TRACT AQ
860,929 S.F.

TRACT AR
860,929 S.F.

TRACT AS
860,929 S.F.

TRACT AT
860,929 S.F.

TRACT AU
860,929 S.F.

TRACT AV
860,929 S.F.

TRACT AW
860,929 S.F.

TRACT AX
860,929 S.F.

TRACT AY
860,929 S.F.

TRACT AZ
860,929 S.F.

TRACT BA
860,929 S.F.

TRACT BB
860,929 S.F.

TRACT BC
860,929 S.F.

TRACT BD
860,929 S.F.

TRACT BE
860,929 S.F.

TRACT BF
860,929 S.F.

TRACT BG
860,929 S.F.

TRACT BH
860,929 S.F.

TRACT BI
860,929 S.F.

TRACT BJ
860,929 S.F.

TRACT BK
860,929 S.F.

TRACT BL
860,929 S.F.

TRACT BM
860,929 S.F.

TRACT BN
860,929 S.F.

TRACT BO
860,929 S.F.

TRACT BP
860,929 S.F.

TRACT BQ
860,929 S.F.

TRACT BR
860,929 S.F.

TRACT BS
860,929 S.F.

TRACT BT
860,929 S.F.

TRACT BU
860,929 S.F.

TRACT BV
860,929 S.F.

TRACT BV
860,929 S.F.

TRACT BW
860,929 S.F.

TRACT BX
860,929 S.F.

TRACT BY
860,929 S.F.

TRACT BZ
860,929 S.F.

TRACT CA
860,929 S.F.

TRACT CB
860,929 S.F.

TRACT CC
860,929 S.F.

TRACT CD
860,929 S.F.

TRACT CE
860,929 S.F.

TRACT CF
860,929 S.F.

TRACT CG
860,929 S.F.

TRACT CH
860,929 S.F.

TRACT CI
860,929 S.F.

TRACT CJ
860,929 S.F.

TRACT CK
860,929 S.F.

TRACT CL
860,929 S.F.

TRACT CM
860,929 S.F.

TRACT CN
860,929 S.F.

TRACT CO
860,929 S.F.

TRACT CP
860,929 S.F.

TRACT CQ
860,929 S.F.

TRACT CR
860,929 S.F.

TRACT CS
860,929 S.F.

TRACT CT
860,929 S.F.

TRACT CU
860,929 S.F.

TRACT CV
860,929 S.F.

TRACT CW
860,929 S.F.

TRACT CX
860,929 S.F.

TRACT CY
860,929 S.F.

TRACT CZ
860,929 S.F.

TRACT DA
860,929 S.F.

TRACT DB
860,929 S.F.

TRACT DC
860,929 S.F.

TRACT DD
860,929 S.F.

TRACT DE
860,929 S.F.

TRACT DF
860,929 S.F.

TRACT DG
860,929 S.F.

TRACT DH
860,929 S.F.

TRACT DI
860,929 S.F.

TRACT DJ
860,929 S.F.

TRACT DK
860,929 S.F.

TRACT DL
860,929 S.F.

TRACT DM
860,929 S.F.

TRACT DN
860,929 S.F.

TRACT DO
860,929 S.F.

TRACT DP
860,929 S.F.

TRACT DQ
860,929 S.F.

TRACT DR
860,929 S.F.

TRACT DS
860,929 S.F.

TRACT DT
860,929 S.F.

TRACT DU
860,929 S.F.

TRACT DV
860,929 S.F.

TRACT DW
860,929 S.F.

TRACT DX
860,929 S.F.

TRACT DY
860,929 S.F.

TRACT DZ
860,929 S.F.

TRACT EA
860,929 S.F.

TRACT EB
860,929 S.F.

TRACT EC
860,929 S.F.

TRACT ED
860,929 S.F.

TRACT EE
860,929 S.F.

TRACT EF
860,929 S.F.

TRACT EG
860,929 S.F.

TRACT EH
860,929 S.F.

TRACT EI
860,929 S.F.

TRACT EJ
860,929 S.F.

TRACT EK
860,929 S.F.

TRACT EL
860,929 S.F.

TRACT EM
860,929 S.F.

TRACT EN
860,929 S.F.

TRACT EO
860,929 S.F.

TRACT EP
860,929 S.F.

TRACT EQ
860,929 S.F.

TRACT ER
860,929 S.F.

TRACT ES
860,929 S.F.

TRACT ET
860,929 S.F.

TRACT EU
860,929 S.F.

TRACT EV
860,929 S.F.

TRACT EW
860,929 S.F.

TRACT EX
860,929 S.F.

TRACT EY
860,929 S.F.

TRACT EZ
860,929 S.F.

TRACT FA
860,929 S.F.

TRACT FB
860,929 S.F.

TRACT FC
860,929 S.F.

TRACT FD
860,929 S.F.

TRACT FE
860,929 S.F.

TRACT FF
860,929 S.F.

TRACT FG
860,929 S.F.

TRACT FH
860,929 S.F.

TRACT FI
860,929 S.F.

TRACT FJ
860,929 S.F.

TRACT FK
860,929 S.F.

TRACT FL
860,929 S.F.

TRACT FM
860,929 S.F.

TRACT FN
860,929 S.F.

TRACT FO
860,929 S.F.

TRACT FP
860,929 S.F.

TRACT FQ
860,929 S.F.

TRACT FR
860,929 S.F.

TRACT FS
860,929 S.F.

TRACT FT
860,929 S.F.

TRACT FU
860,929 S.F.

TRACT FV
860,929 S.F.

TRACT FW
860,929 S.F.

TRACT FX
860,929 S.F.

TRACT FY
860,929 S.F.

TRACT FZ
860,929 S.F.

TRACT GA
860,929 S.F.

TRACT GB
860,929 S.F.

TRACT GC
860,929 S.F.

TRACT GD
860,929 S.F.

TRACT GE
860,929 S.F.

TRACT GF
860,929 S.F.

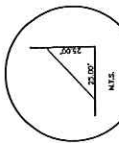
TRACT GG
860,929 S.F.

TRACT GH
860,929 S.F.

TRACT GI
860,929 S.F.

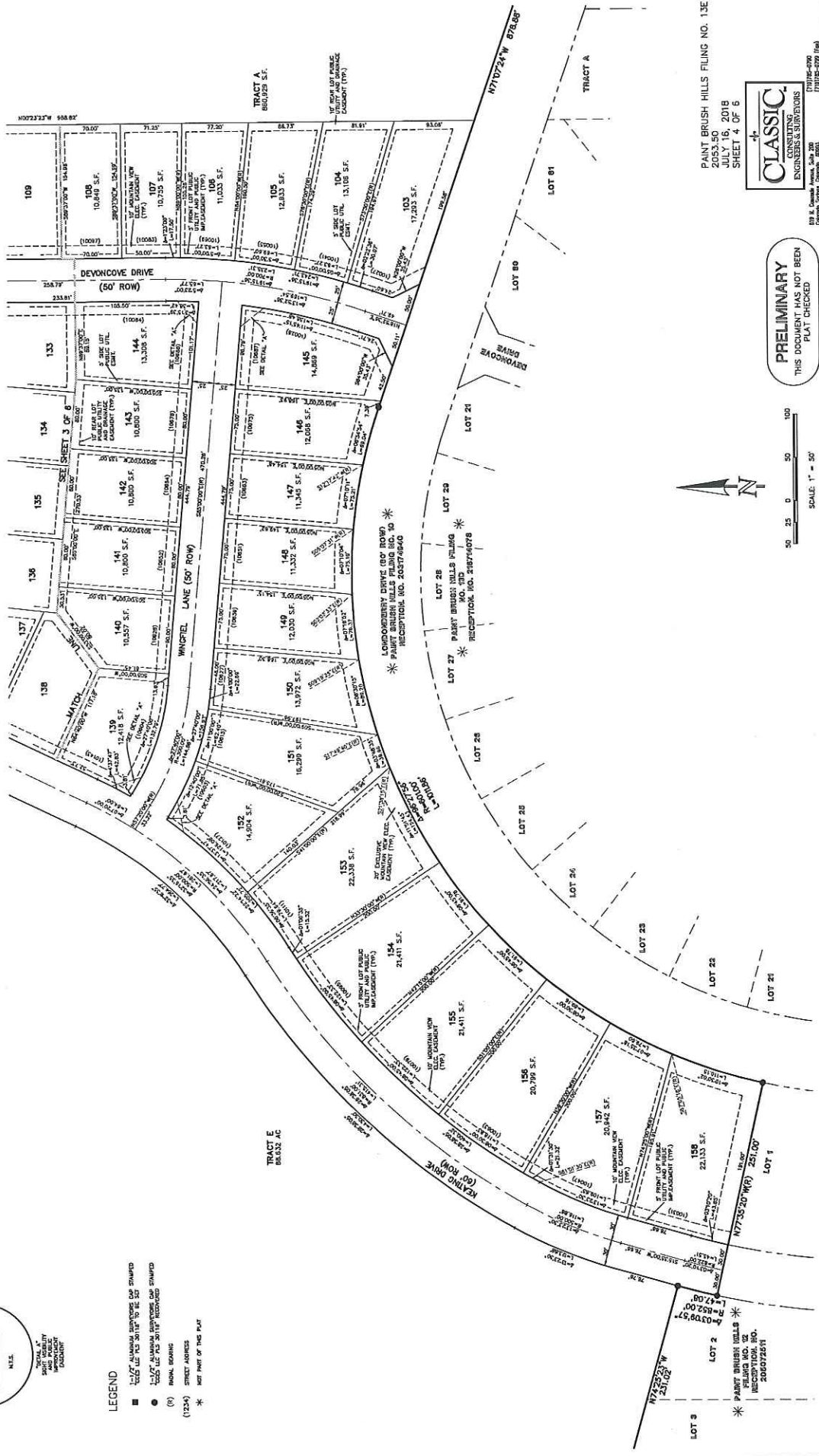
PAIN T BRUSH HILLS FILING NO. 13E

A REPEAT OF TRACT E AS PLATTED IN PAIN T BRUSH HILLS FILING NO. 13A, RECORDED UNDER RECEPTION NO. 218713413, BEING A PORTION OF THE WEST HALF OF SECTION 25 AND THE EAST HALF OF SECTION 26, TOWNSHIP 12 SOUTH, RANGE 65 WEST OF THE SIXTH PRINCIPAL MERIDIAN, EL PASO COUNTY, COLORADO



LEGEND

- 1/2" ALUMINUM SURVEYS CAP STAMPED
- 1/2" ALUMINUM SURVEYS CAP STAMPED
- () 1/2" ALUMINUM SURVEYS CAP STAMPED
- (1234) STREET ADDRESS
- * NOT PART OF THIS PLAT



PAIN T BRUSH HILLS FILING NO. 13E
2053.50
JULY 16, 2018
SHEET 4 OF 6

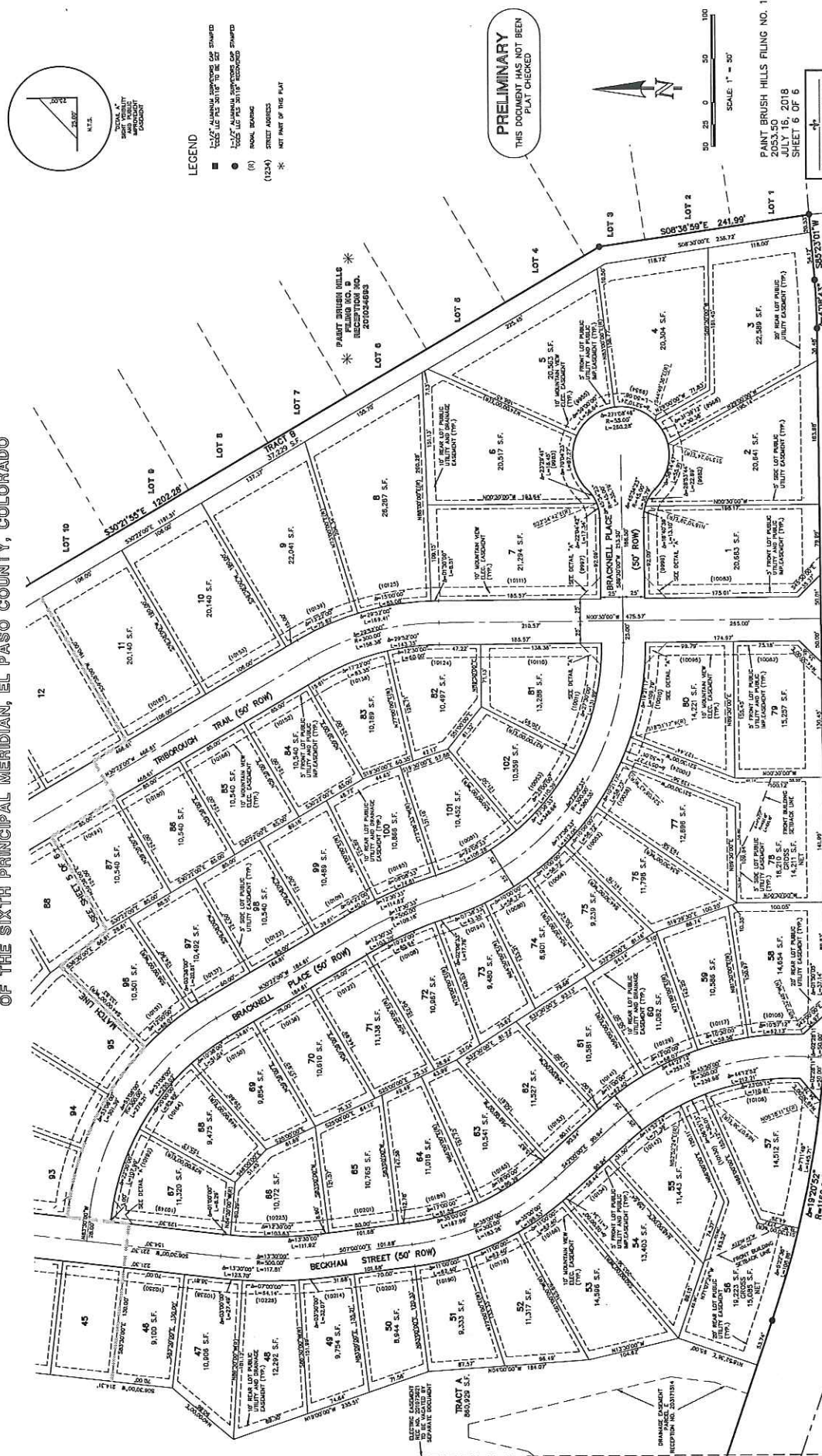


PRELIMINARY
THIS DOCUMENT HAS NOT BEEN
PLAY CHECKED

119 S. Duval Street, Suite 200
Colorado Springs, Colorado 80905
(719) 578-0700
(719) 578-0700 (fax)

PAINTE BRUSH HILLS FILING NO. 13E

A REPLAT OF TRACT E AS PLATTED IN PAINT BRUSH HILLS FILING NO. 13A, RECORDED UNDER RECEPTION NO. 213718419, BEING A PORTION OF THE WEST HALF OF SECTION 26 AND THE EAST HALF OF SECTION 25, TOWNSHIP 12 SOUTH, RANGE 65 WEST OF THE SIXTH PRINCIPAL MERIDIAN, EL PASO COUNTY, COLORADO



- LEGEND**
- 120' WIDE ELECTRIC EASEMENT (120' ROW)
 - 60' WIDE GAS EASEMENT (60' ROW)
 - 60' WIDE WATER EASEMENT (60' ROW)
 - (R) RAILROAD RIGHT-OF-WAY
 - (125A) STREET ADDRESS
 - * METE AND BOUNDS

PRELIMINARY
THIS DOCUMENT HAS NOT BEEN
PLAN CHECKED

SCALE: 1" = 50'
50 25 0 50 100

CLASSIC
CONSULTING
ENGINEERS & SURVEYORS

PAINT BRUSH HILLS FILING NO. 13E
2053.SD.
JULY 16, 2018
SHEET 6 OF 6

* LONGCOURT DRIVE (60' ROW)
RECEPTION NO. 205474403

* PAINT BRUSH HILLS FILING NO. 10

* RECEPTION NO. 205474403

* RECEPTION NO. 205474403

* RECEPTION NO. 205474403

* RECEPTION NO. 205474403

* RECEPTION NO. 205474403

* RECEPTION NO. 205474403

* RECEPTION NO. 205474403

* RECEPTION NO. 205474403

* RECEPTION NO. 205474403

* RECEPTION NO. 205474403

* RECEPTION NO. 205474403

* RECEPTION NO. 205474403

* RECEPTION NO. 205474403

* RECEPTION NO. 205474403

* RECEPTION NO. 205474403

* RECEPTION NO. 205474403

* RECEPTION NO. 205474403

* RECEPTION NO. 205474403

* RECEPTION NO. 205474403