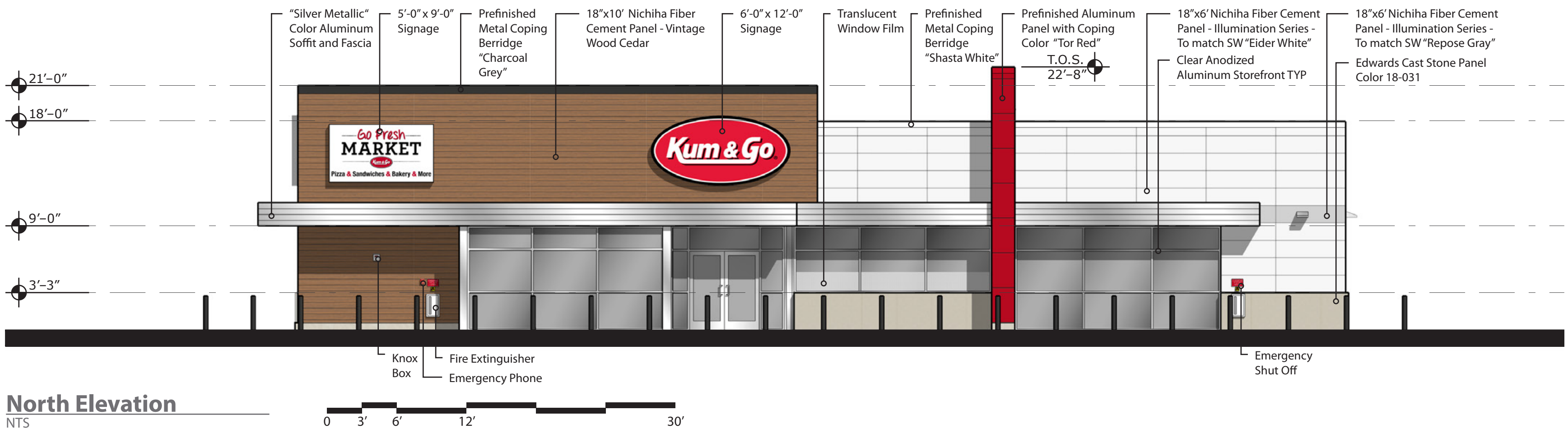
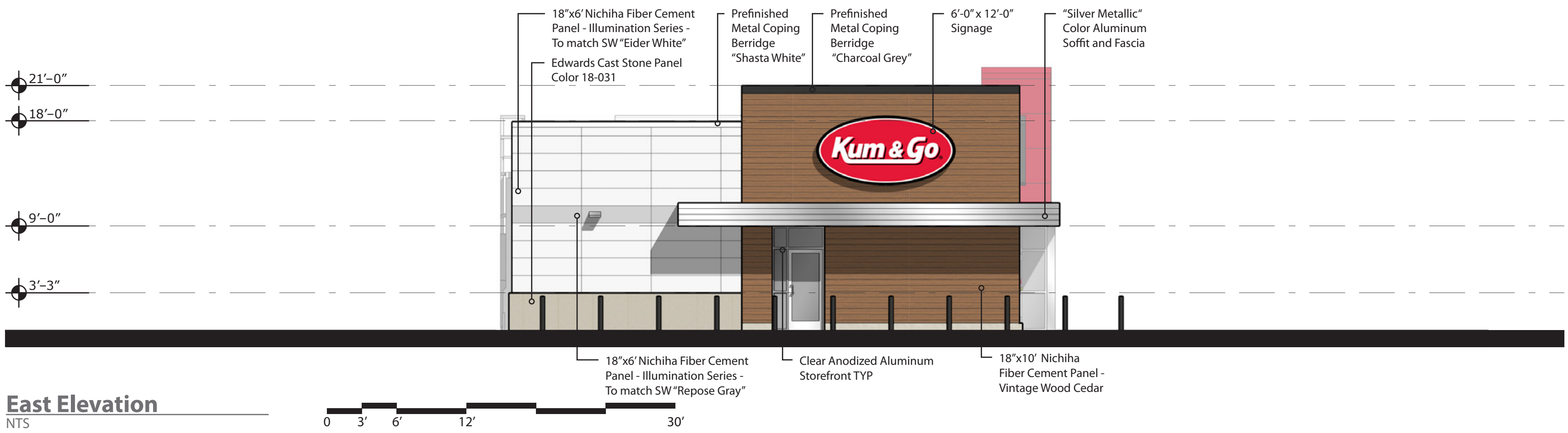


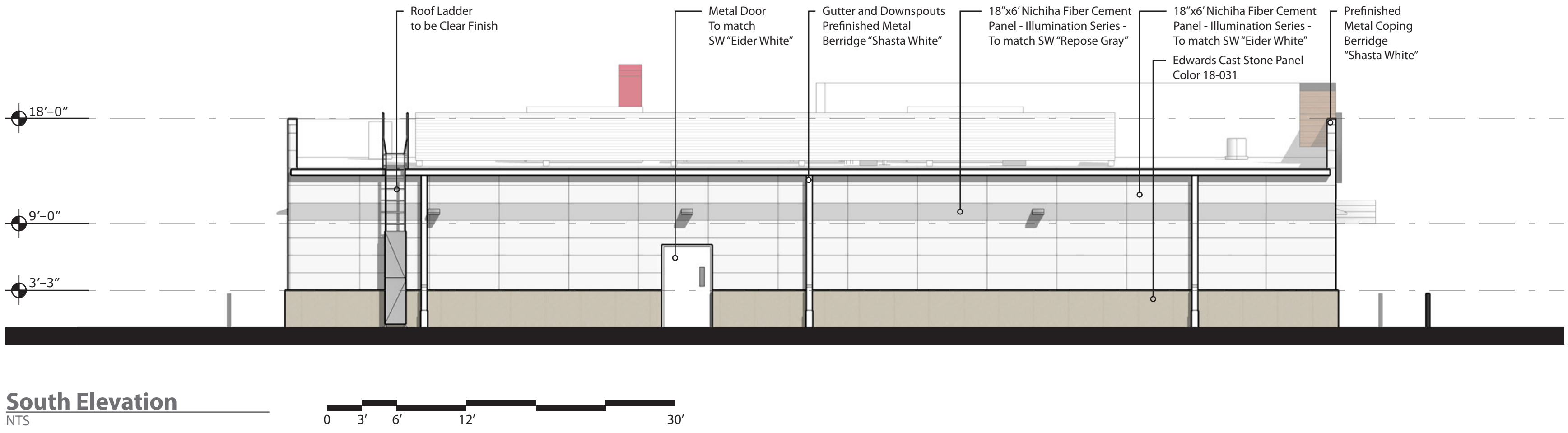
Proposed Building Signage			
Location	Sign	Size	Area
North Elevation	"Kum & Go" Sign	6' x 12'	72 SF
	"Go Fresh Market" Sign	5' x 9'	45 SF
East Elevation	"Kum & Go" Sign	6' x 12'	72 SF
South Elevation	No Signage	---	0 SF
West Elevation	No Signage	---	0 SF
Total			189 SF



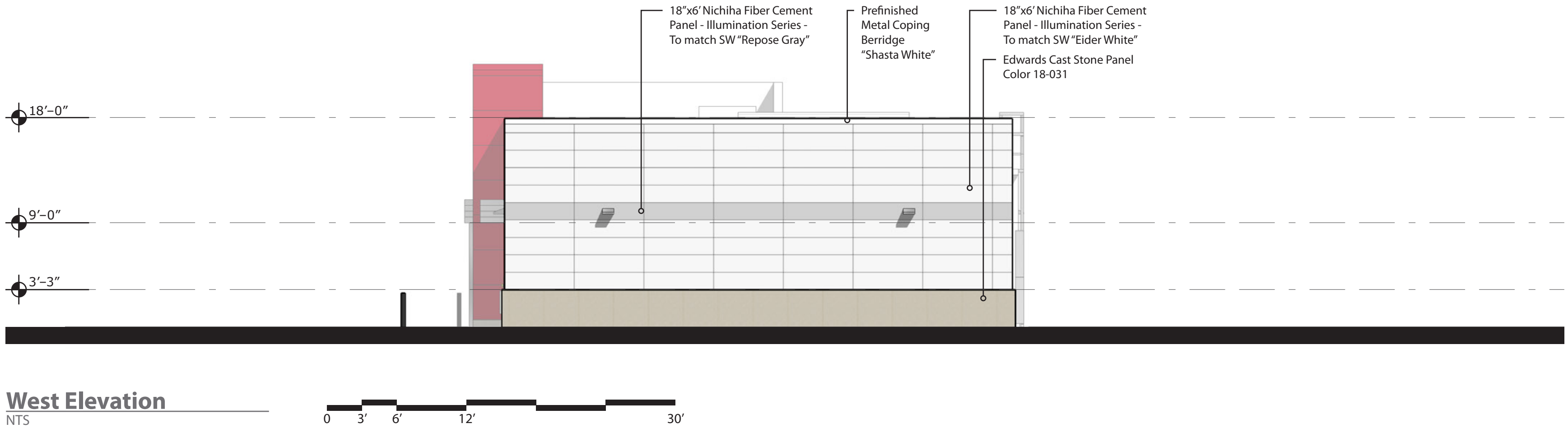
North Elevation  
NTS




East Elevation  
NTS




South Elevation  
NTS



West Elevation  
NTS



**ARCHITECT OF RECORD:**  
 BRR ARCHITECTURE, INC.  
 8131 MITCHELL AVENUE  
 SUITE 300  
 OVERLAND PARK, KS 66204  
 www.brrarch.com  
 TEL: 913-262-9095  
 FAX: 913-262-9044



1459 Grand Avenue  
 Des Moines, Iowa  
 50309  
 P:515-457-6247

EL PASO COUNTY, CO

MAIN ST. AND SECURITY BLVD.

EXTERIOR ELEVATIONS

KG PROJECT TEAM:

RDM:

SDM:

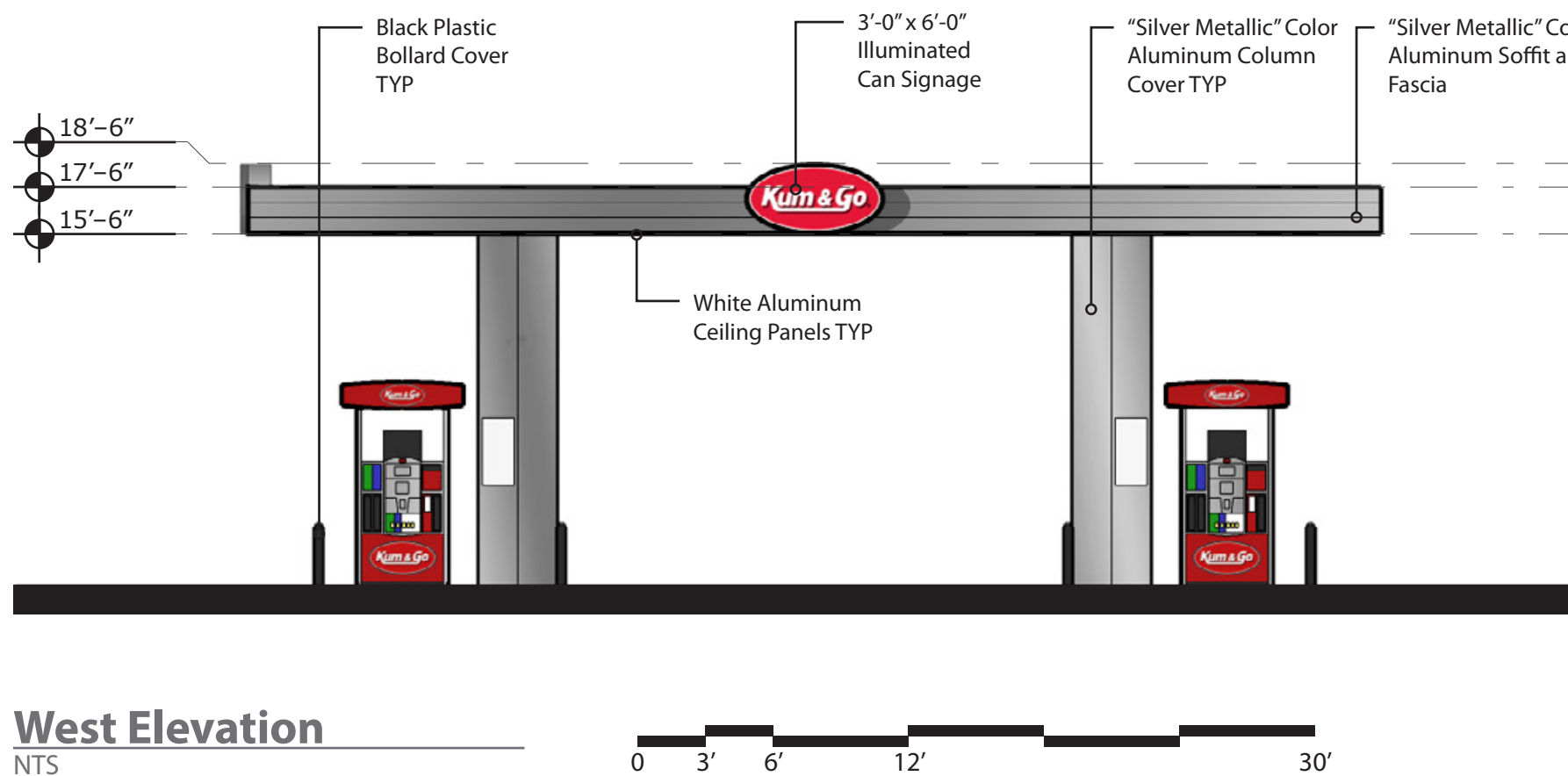
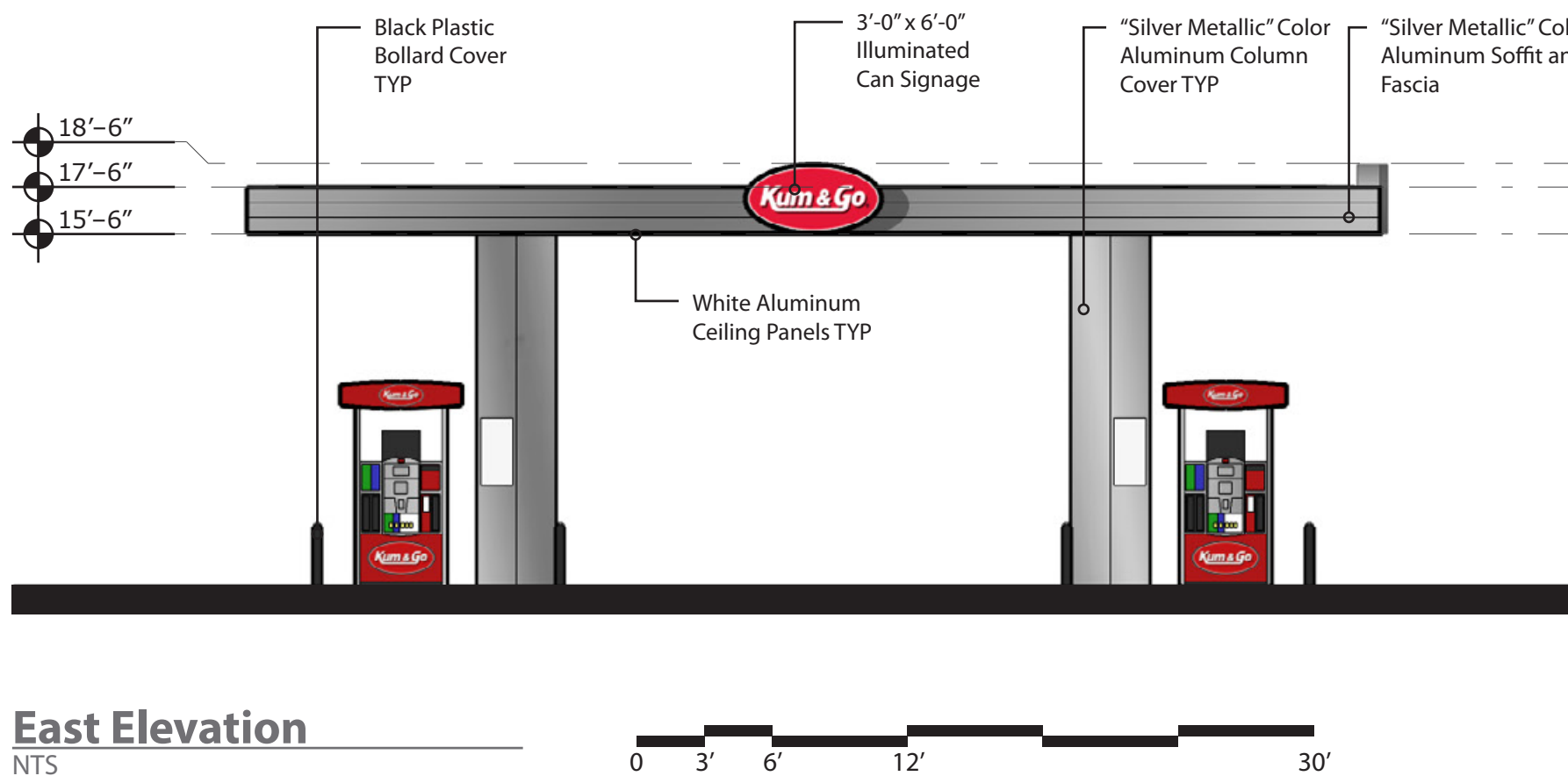
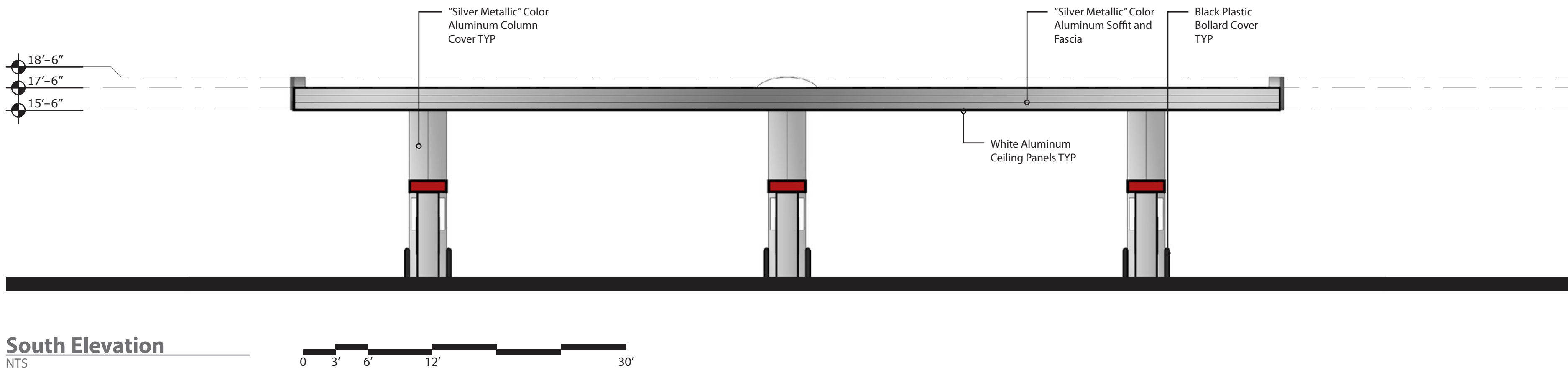
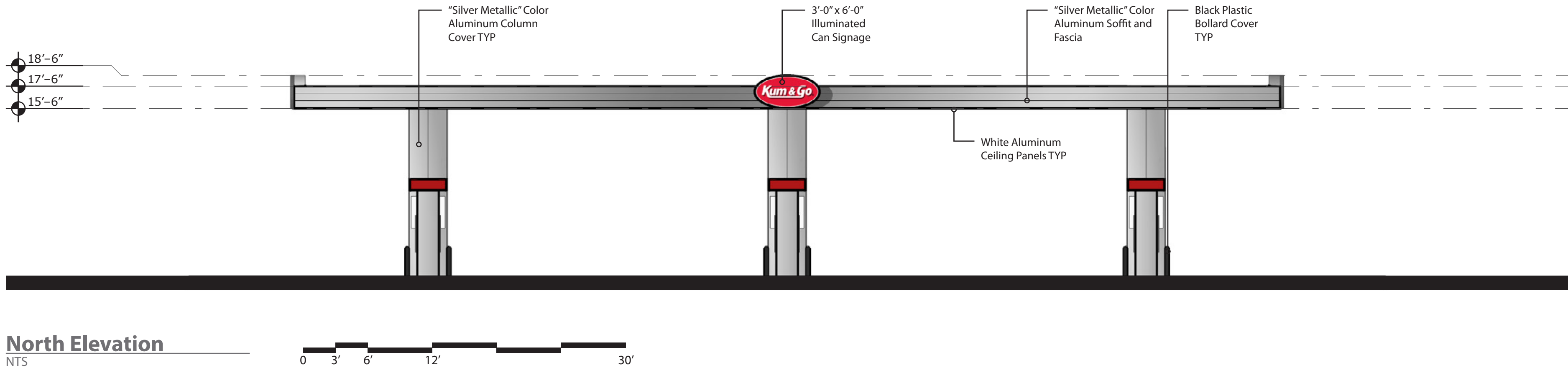
CPM:

REVISION DESCRIPTION	DATE	DATE

DATE: 03/25/2022

SHEET NUMBER: 13

Proposed Canopy Signage			
Location	Sign	Size	Area
North Elevation	"Kum & Go" Sign	3' x 6'	18 SF
South Elevation	No Signage	---	0 SF
East Elevation	"Kum & Go" Sign	3' x 6'	18 SF
West Elevation	"Kum & Go" Sign	3' x 6'	18 SF
Total			54 SF



**brr**

ARCHITECT OF RECORD:  
BRR ARCHITECTURE, INC  
8131 METCALF AVENUE  
SUITE 300  
OVERLAND PARK, KS 66204  
[www.brrarch.com](http://www.brrarch.com)  
TEL: 913-262-9055  
FAX: 913-262-9044

SEAL

1459 Grand Avenue  
Des Moines, Iowa  
50309  
P:515-457-6247

EL PASO COUNTY, CO  
MAIN ST. AND SECURITY BLVD.

CANOPY ELEVATIONS

KG PROJECT TEAM:  
RDM:  
SDM:  
CPM:

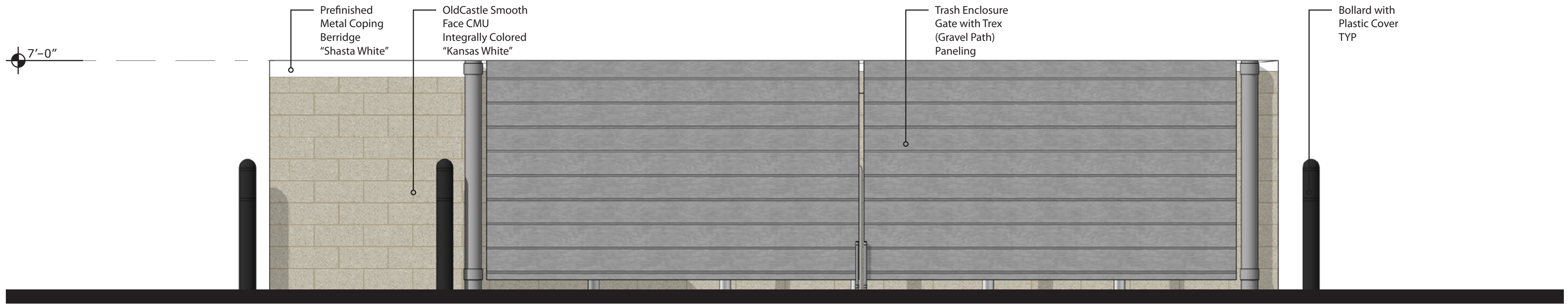
REVISION DESCRIPTION	DATE				

REVISIONS

DATE:  
03/25/2022

SHEET NUMBER:  
**14**

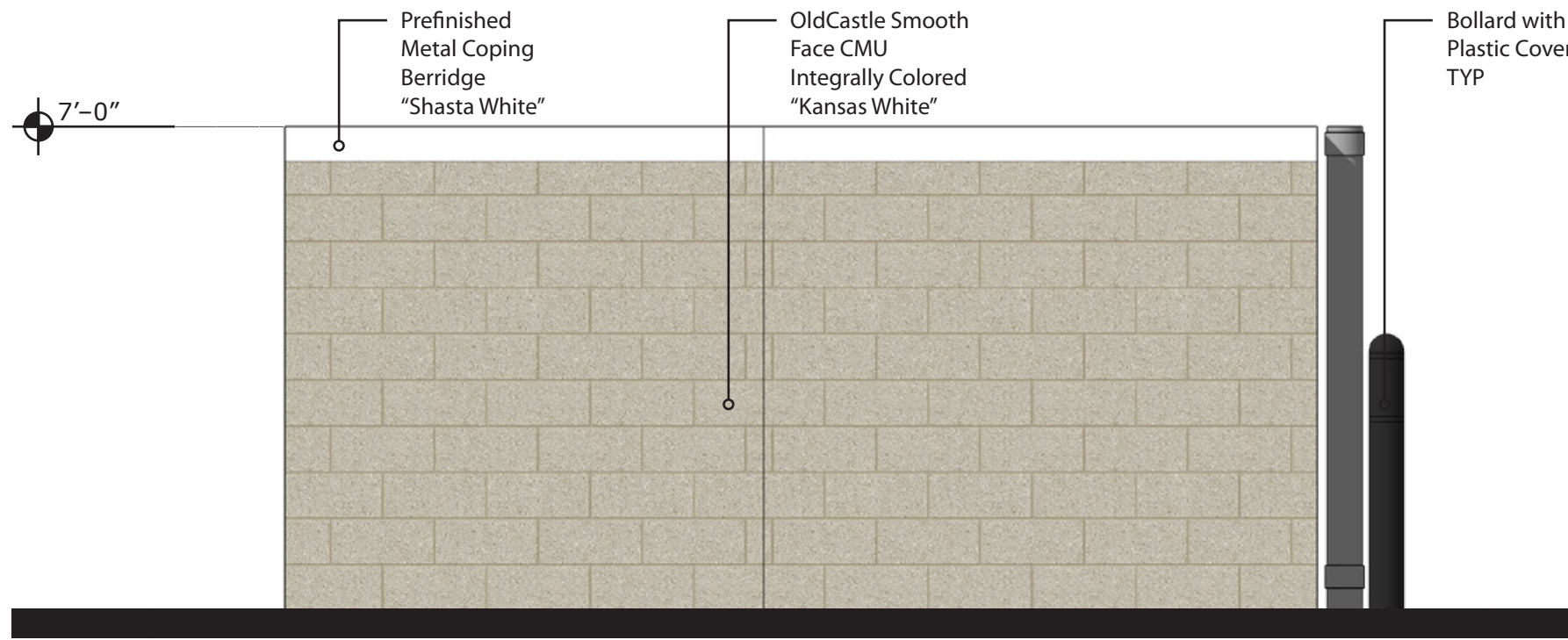




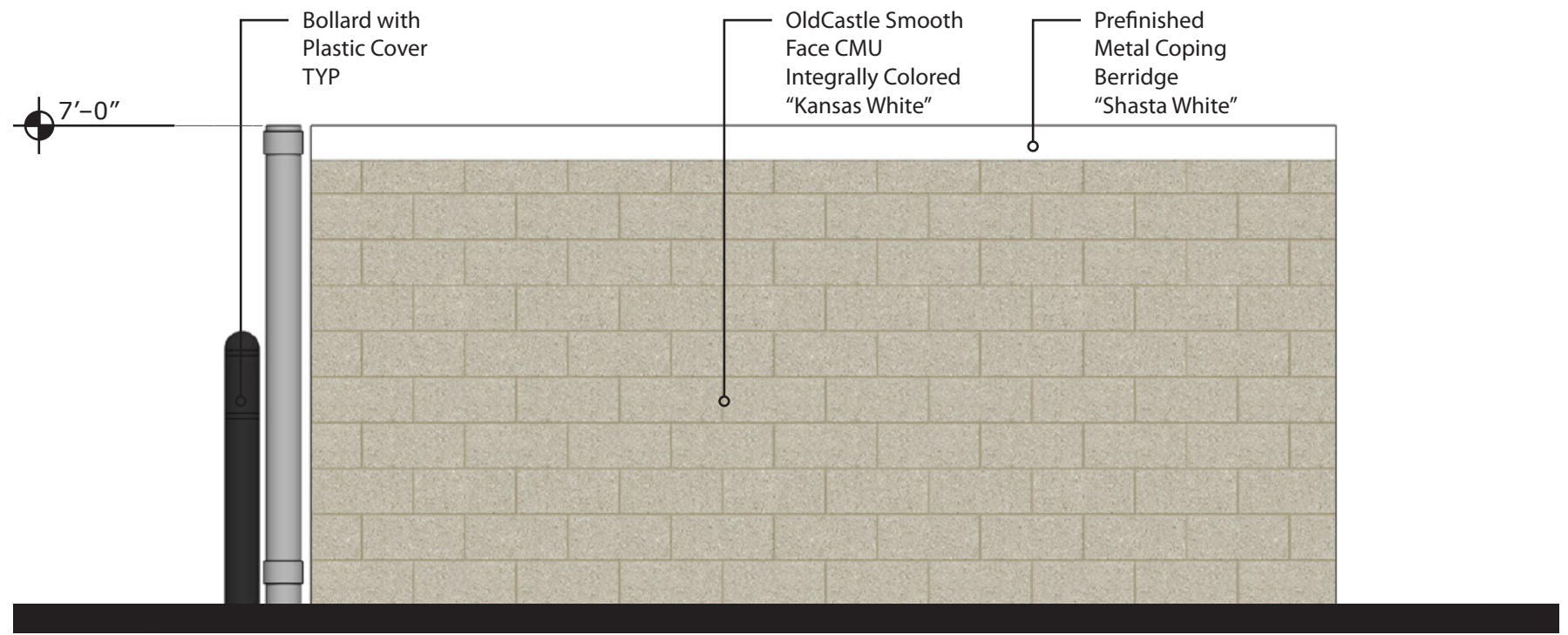
**South Elevation**  
NTS



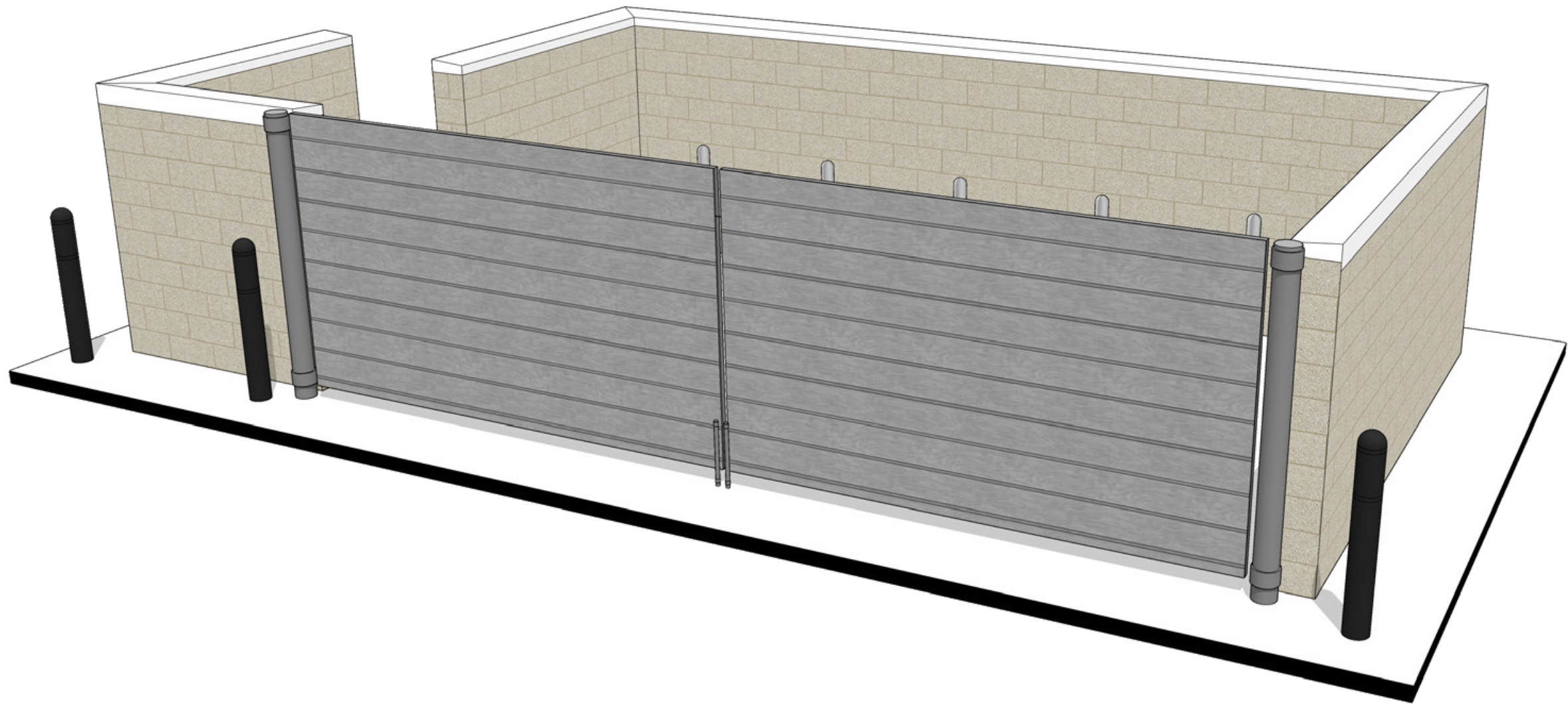
**North Elevation**  
NTS



**West Elevation**  
NTS



**East Elevation**  
NTS



**Perspective**  
NTS



ARCHITECT OF RECORD:  
BRR ARCHITECTURE, INC  
8131 METCALF AVENUE  
SUITE 300  
OVERLAND PARK, KS 66204  
www.brrarch.com  
TEL: 913-262-9095  
FAX: 913-262-9044



1459 Grand Avenue  
Des Moines, Iowa  
50309  
P:515-457-6247

EL PASO COUNTY, CO  
MAIN ST. AND SECURITY BLVD.  
TRASH ENCLOSURE ELEVATIONS

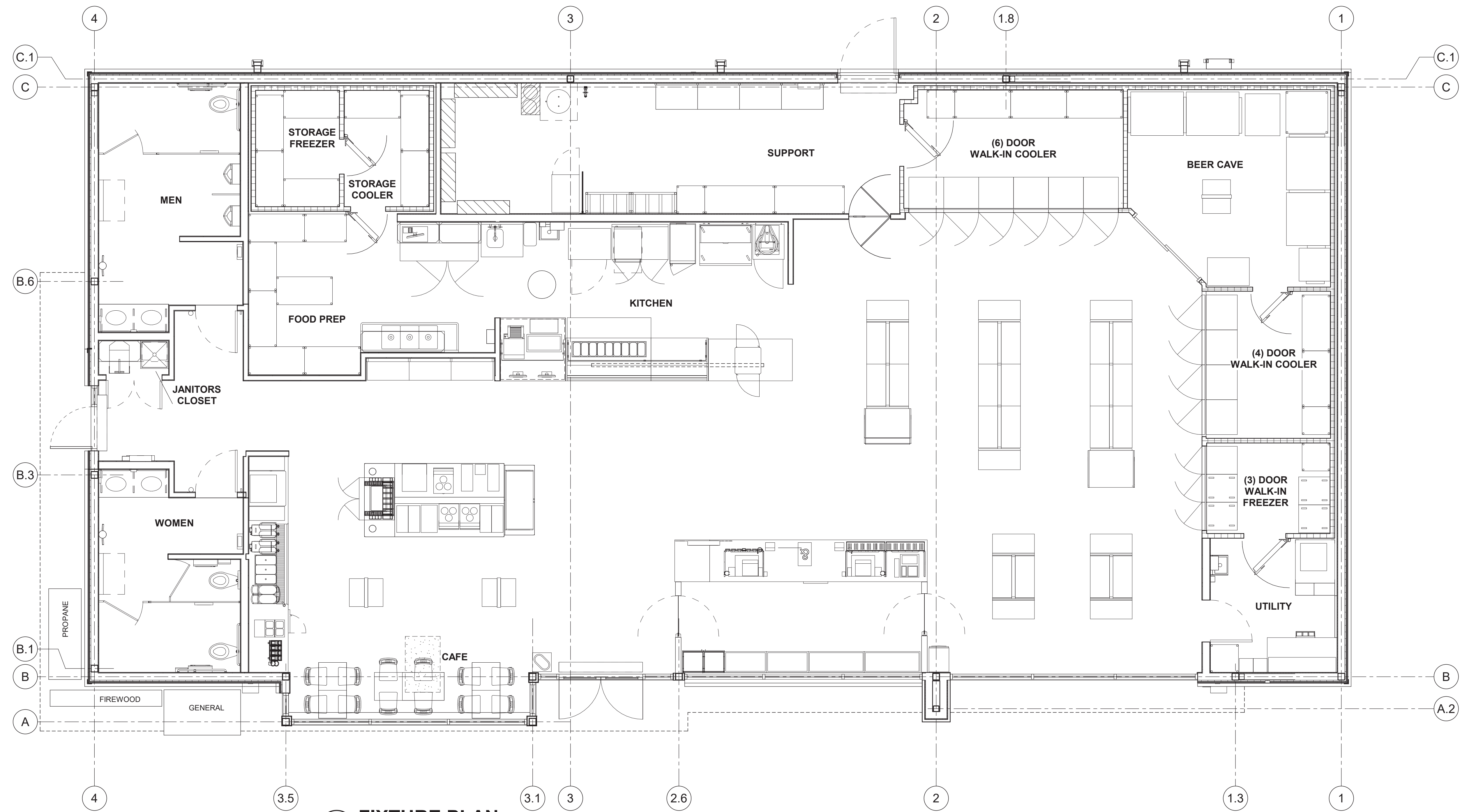
KG PROJECT TEAM:  
RDM:  
SDM:  
CPM:

REVISION DESCRIPTION	DATE	REVISIONS


DATE: 03/25/2022

SHEET NUMBER:






**1** **FIXTURE PLAN**  
1/4" = 1'-0"



ARCHITECT OF RECORD:  
BRR ARCHITECTURE, INC.  
8131 METCALF AVENUE  
SUITE 300  
OVERLAND PARK, KS 66204  
www.brrarch.com  
TEL: 913-262-9095  
FAX: 913-262-9044



1459 Grand Avenue  
Des Moines, Iowa  
50309  
P:515-457-6247

EL PASO COUNTY, CO  
MAIN ST. AND SECURITY BLVD.  
FIXTURE PLAN

KG PROJECT TEAM:  
RDM:  
SDM:  
CPM:

REVISION DESCRIPTION	DATE

DATE: 03/25/2022

SHEET NUMBER:  
**16**



ARCHITECT OF RECORD:  
BRR ARCHITECTURE, INC.  
8131 MITCHELL AVENUE  
SUITE 300  
OVERLAND PARK, KS 66204  
www.brrarch.com  
TEL: 913-262-9095  
FAX: 913-262-9044



1459 Grand Avenue  
Des Moines, Iowa  
50309  
P:515-457-6247

EL PASO COUNTY, CO  
MAIN ST. AND SECURITY BLVD.  
ROOF PLAN

KG PROJECT TEAM:  
RDM:  
SDM:  
CPM:

REVISION DESCRIPTION	DATE	REVISIONS

DATE: 03/25/2022

SHEET NUMBER:

