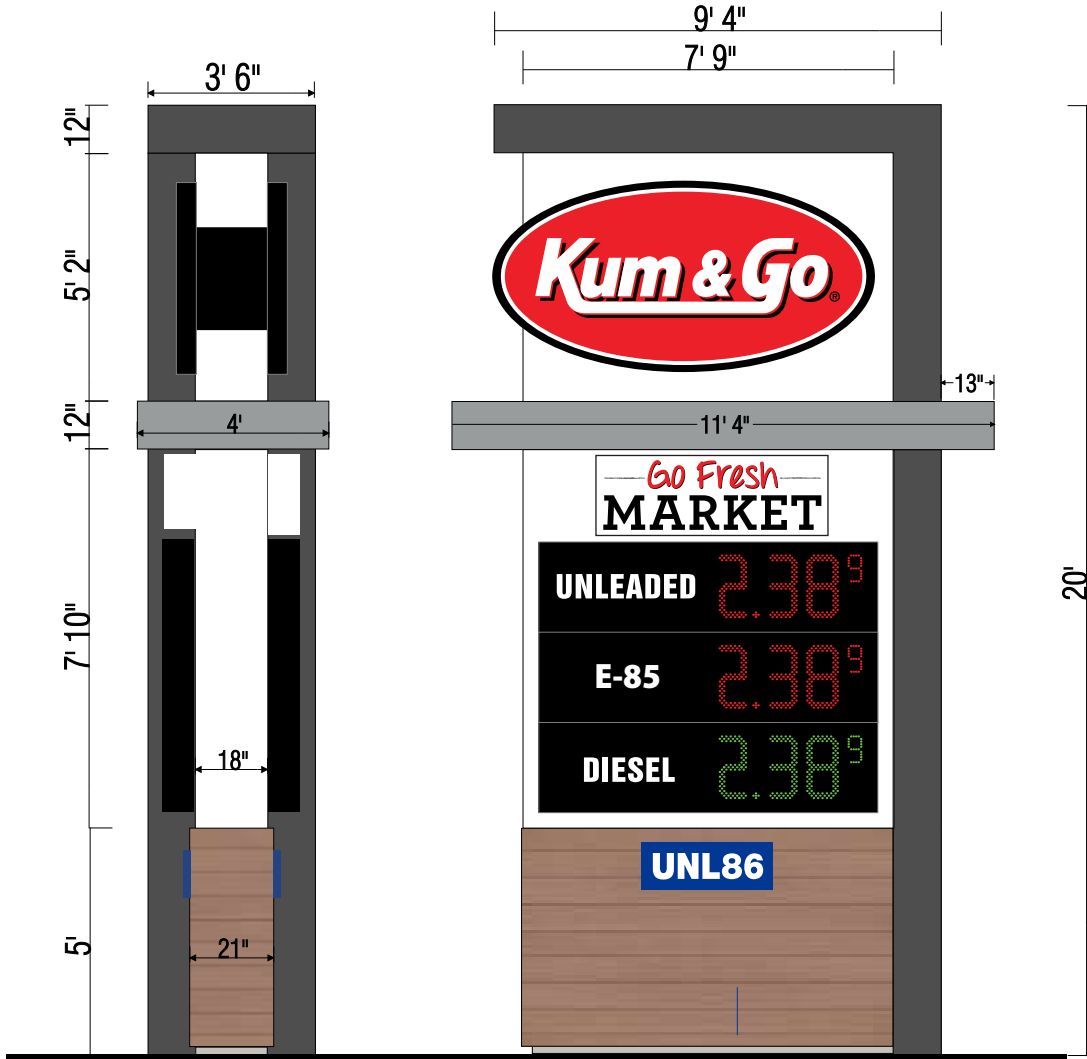




20' MONUMENT

SUMMARY OF SQUARE FOOTAGE

Allowed Square Feet - 180 sq. ft.
 Proposed Square Feet - 75.84 sq. ft.
 Allowed Height 21' - Sign Height 20'
 Signs are within accordance with EPC LDC 6.2.10
 Kum & Go / Go Fresh Market Signs have internal LED illumination.



4' X 8' KUM & GO - AREA: 25.12 SQ FT
 1' 8" X 4' 10" GO FRESH MARKET - AREA: 8.05 SQ FT
 5' 7 5/8" X 7' 1" GAS PRICE SIGN - AREA: 39.92 SQ FT
 1' x 2'-9" UNL86 PANEL - 2.75 SQ FT

75.84 SQ. FT. TOTAL



!""# \$%&'()*+,-./:012,32
 435+6789+&9+&;!<=>
 ?@!AB#A:B:!!
 GDF@!AB#A:B:!!=
 E2F?95 G./,-B@9

PROJECT/CLIENT NAME:
KUM & GO #2232
 LOCATION:
El Paso County, CO

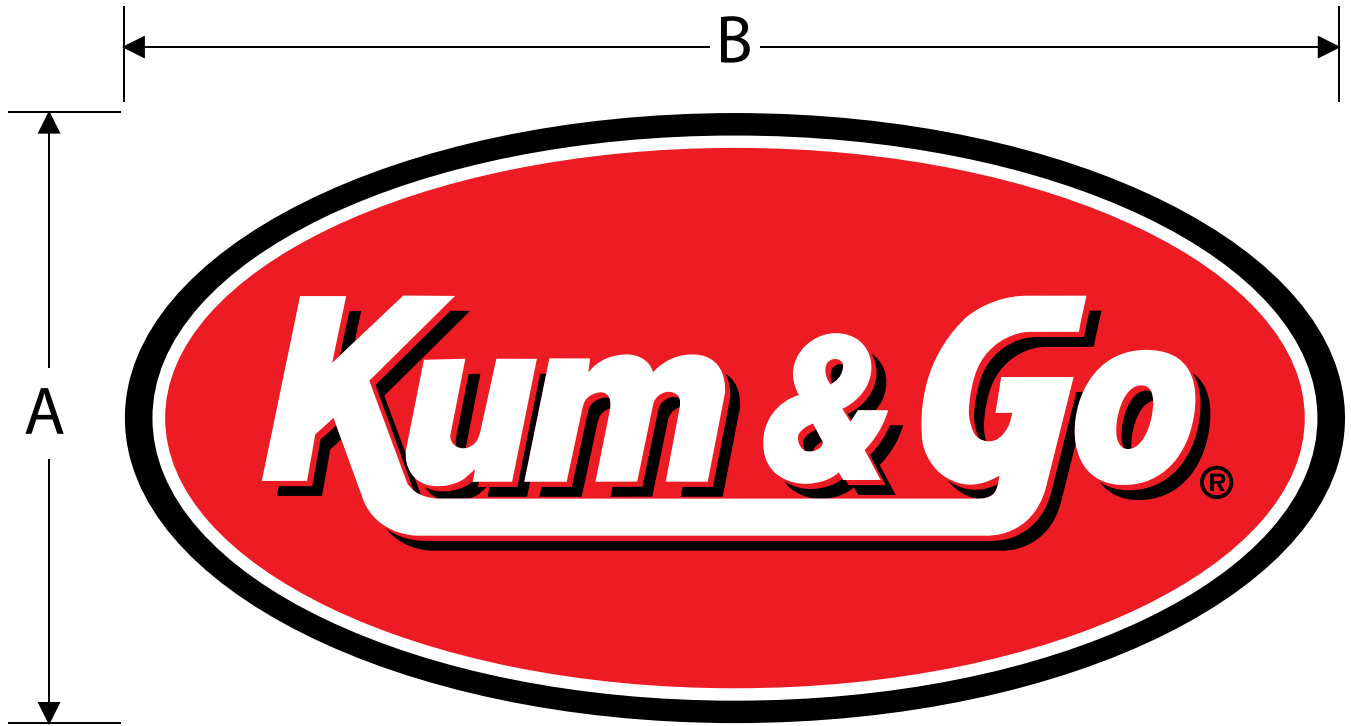
ACCOUNT EXECUTIVE:
TERRY HOWARD
 DATE OF ORIGINAL DWG:
APRIL 14, 2022

SIGN TYPE/DESCRIPTION:
20' MONUMENT SIGN
 REVISION HISTORY:

SHEET NAME:
KG-20.0



3' x 6' OVAL CANOPY SIGN



A - HEIGHT	B - WIDTH	○ AREA	■ AREA
3 FT	6 FT	14.4 SQ FT	18 SQ FT

- TYPICAL CONSTRUCTION OF KUM & GO FLEX FACE OVAL:**
- FLEX FACE WITH DIGITAL PRINT UV Coating
 - ALUMINUM CABINET BLEED FACE RETAINER PAINTED BLACK
 - INTERNAL LED ILLUMINATION UL WIRED





5' x 9' GO FRESH BUILDING SIGN



FONT: Throw My Hands Up In The Air
 PMS: 200c
 CMYK: 0.100.75.20
 RGB: 204.0.51
 HEX: #cc0033
 DROP SHADOW: Black

FONT: Archer Bold
 PMS: 100% Black
 CMYK: 0.0.0.100
 RGB: 35.31.32
 HEX: #000000

A - HEIGHT	B - WIDTH	AREA
5 FT	9 FT	45

- TYPICAL CONSTRUCTION OF MARKET FRESH SIGNS:**
- FLEX FACE WITH DIGITAL PRINT UV Coating
 - ALUMINUM CABINET BLEED FACE RETAINER PAINTED BLACK
 - INTERNAL LED ILLUMINATION UL WIRED
 - PMS 200 (RED)



PROJECT/CLIENT NAME:	ACCOUNT EXECUTIVE:	DRAWN BY:	SIGN TYPE:	DWG DATE:	ISSUES/REVISIONS:	SHEET NO.
Kum & Go Stores	Terry Howard	Terry Howard	GO FRESH Building Sign	01.31.18		K-4.0



6' x 12' OVAL WALL SIGN



OVAL MEASUREMENTS & SQUARE FOOTAGES

A - HEIGHT	B - WIDTH	○ AREA	■ AREA
6 FT	12 FT	56.52 SQ FT	72 SQ FT

TYPICAL CONSTRUCTION:

- FLEX FACE WITH DIGITAL PRINT UV Coating
- ALUMINUM CABINET BLEED FACE RETAINER PAINTED BLACK
- INTERNAL LED ILLUMINATION UL WIRED
- PMS 200 (RED)



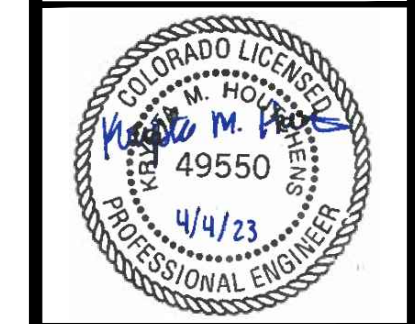
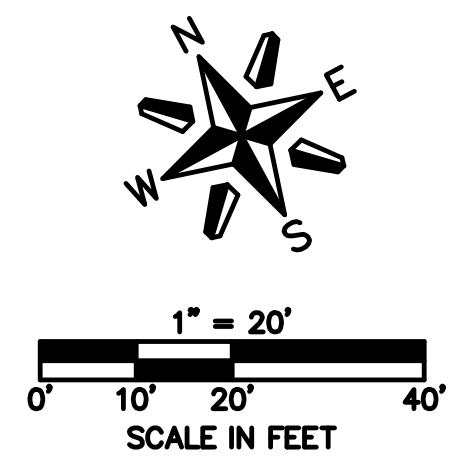
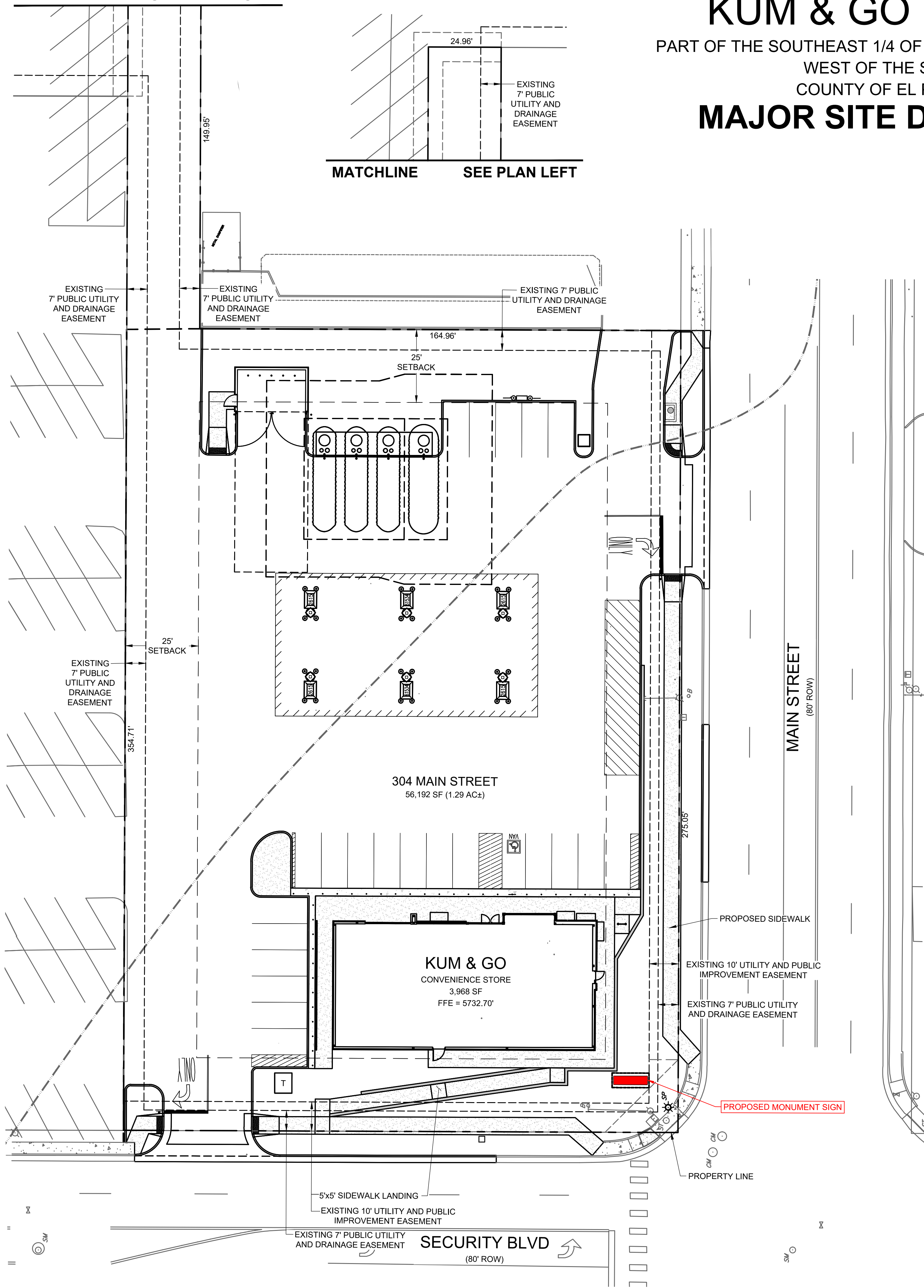
MATCHLINE SEE PLAN RIGHT

KUM & GO GAS & C-STORE

PART OF THE SOUTHEAST 1/4 OF SECTION 11, TOWNSHIP 15 SOUTH, RANGE 66
WEST OF THE SIXTH PRINCIPAL MERIDIAN,
COUNTY OF EL PASO, STATE OF COLORADO

MAJOR SITE DEVELOPMENT PLAN

MATCHLINE SEE PLAN LEFT



1459 Grand Ave
Des Moines, IA 50309
P: 888-458-6646

2232 - EL PASO, COLORADO
SECURITY BLVD. AND MAIN ST.
SIGN PLAN

KG PROJECT TEAM:
RDM:
SDM:
CPM:

DATE	REVISION DESCRIPTION
08/18/22	1ST REVIEW COMMENTS
01/06/23	2ND REVIEW COMMENTS
04/05/23	3RD REVIEW COMMENTS

DATE: 03-31-2023

SHEET NUMBER:
EX-1
5 OF 42



PCD FILE NO. PPR-2225

P:\KUM & GO\CO. EL PASO COUNTY - 2232 MAIN AND SECURITY\08 CAD\EA\HIT\SSIGN PLAN.DWG