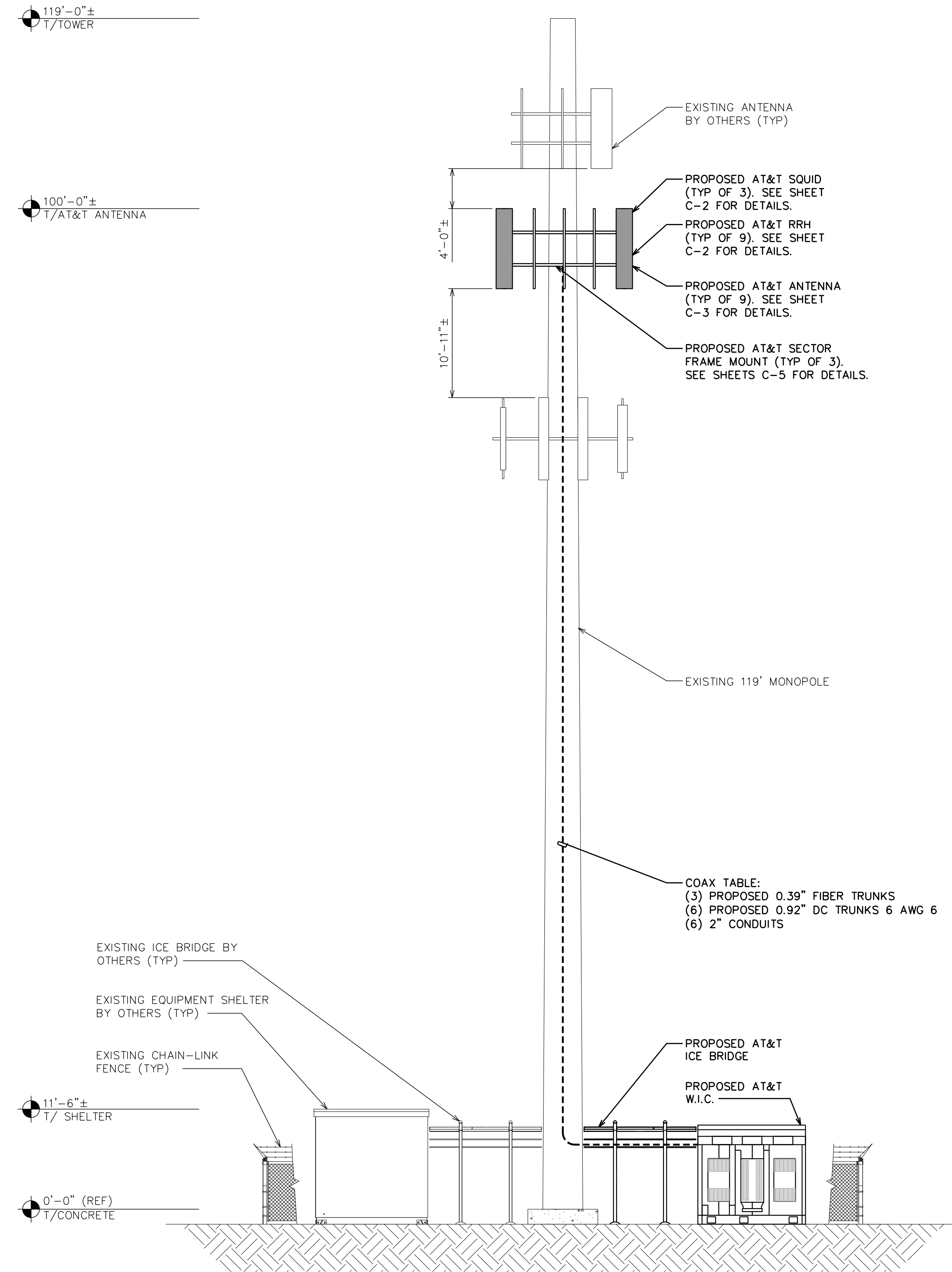
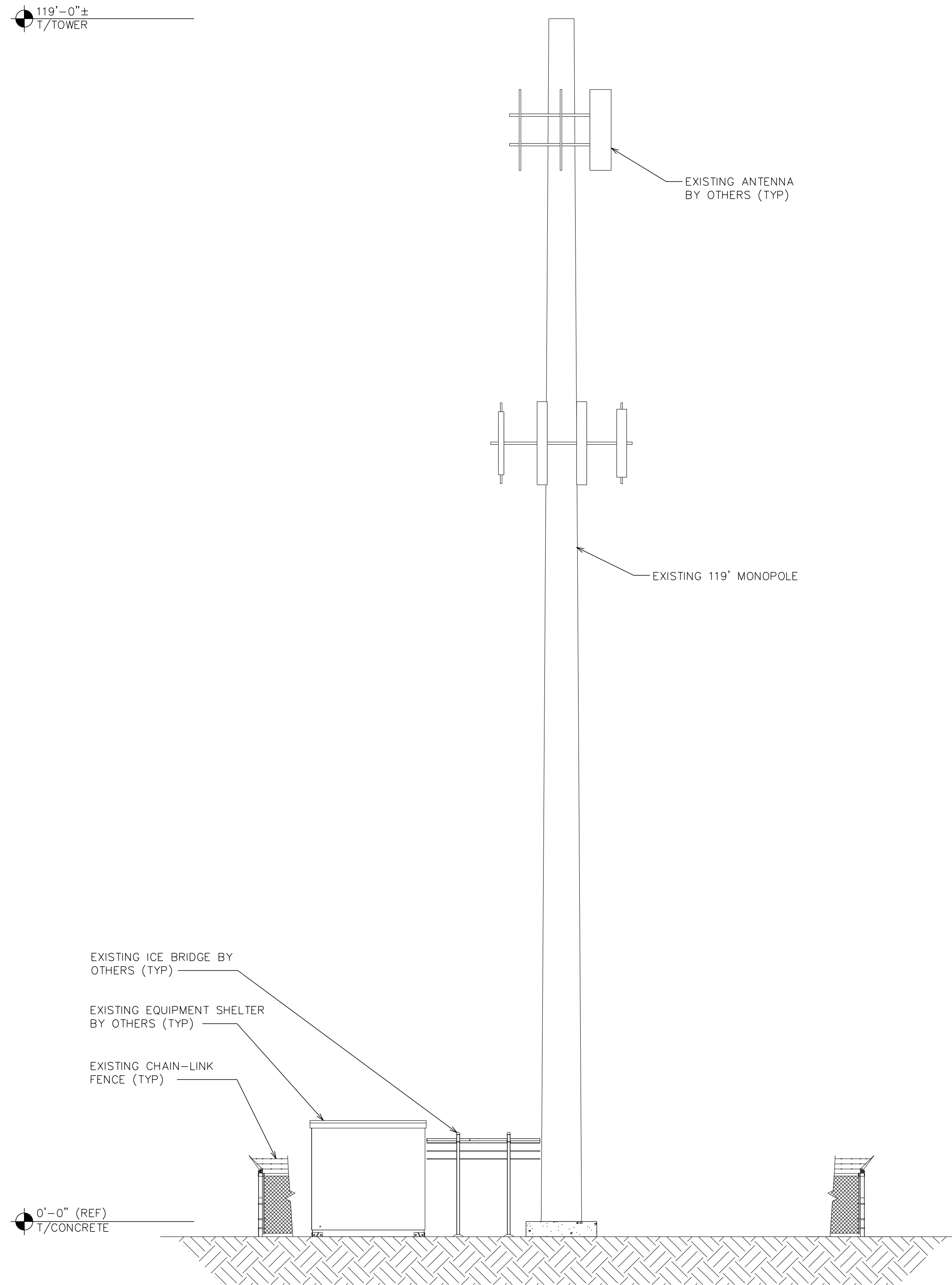


NOTE:

TOWER ELEVATION IS FOR SCHEMATIC PURPOSES ONLY. TEP DID NOT CONFIRM EXISTING SITE CONDITIONS INCLUDING, BUT NOT LIMITED TO ANTENNA HEIGHTS, ANTENNA AZIMUTHS, AND MOUNT CONFIGURATIONS.

NOTES:

1. PROPOSED CABLES TO BE ROUTED PER SPECIFICATIONS OF PASSING STRUCTURAL ANALYSIS.
2. TOWER ELEVATION IS FOR SCHEMATIC PURPOSES ONLY. TEP DID NOT CONFIRM EXISTING SITE CONDITIONS INCLUDING, BUT NOT LIMITED TO ANTENNA HEIGHTS, ANTENNA AZIMUTHS, AND MOUNT CONFIGURATIONS.
3. CONTRACTOR TO VERIFY PROPOSED LOADING WITH PASSING STRUCTURAL ANALYSIS PRIOR TO CONSTRUCTION. CONTRACTOR TO CONTACT AT&T OR AMERICAN TOWER CORPORATION IMMEDIATELY IN THE EVENT OF ANY DISCREPANCIES.



AT&T SITE ID: COL02205
AT&T FA CODE: 15312479
AT&T PACE #: MRUTH042458
ATC #: 370609
WIDEFIELD HIGH SCHOOL II

523 WIDEFIELD ROAD
COLORADO SPRINGS,
CO 80911
(EL PASO COUNTY)
EXISTING 119'-0"
MONOPOLE TOWER
NSB - LTE - 1C/2C/3C/4C/
5G NR 1SR

ISSUED FOR:

| REV | DATE | DRWN | DESCRIPTION | QA |
|-----|----------|------|------------------|-----|
| A | 11-23-20 | KT | PRELIMINARY | EGG |
| B | 12-14-20 | SDD | 90% CONSTRUCTION | EGG |
| C | 02-18-21 | CAK | 90% CONSTRUCTION | EGG |

SEAL:

PRELIMINARY
DO NOT USE FOR CONSTRUCTION

IT IS A VIOLATION OF LAW FOR ANY PERSON, UNLESS THEY ARE ACTING UNDER THE DIRECTION OF A LICENSED PROFESSIONAL ENGINEER, TO ALTER THIS DOCUMENT.

SHEET TITLE:
EXISTING AND FINAL ELEVATIONS

SHEET NUMBER: **C-3** **REVISION:** **C**

TEP #: 177861.243634

EXISTING TOWER ELEVATION

SCALE: 1/8" = 1'-0" (24x36)
 SCALE: 1/6" = 1'-0" (11x17)



FINAL TOWER ELEVATION

SCALE: 1/8" = 1'-0" (24x36)
 SCALE: 1/6" = 1'-0" (11x17)

