

AUTUMN ACRES

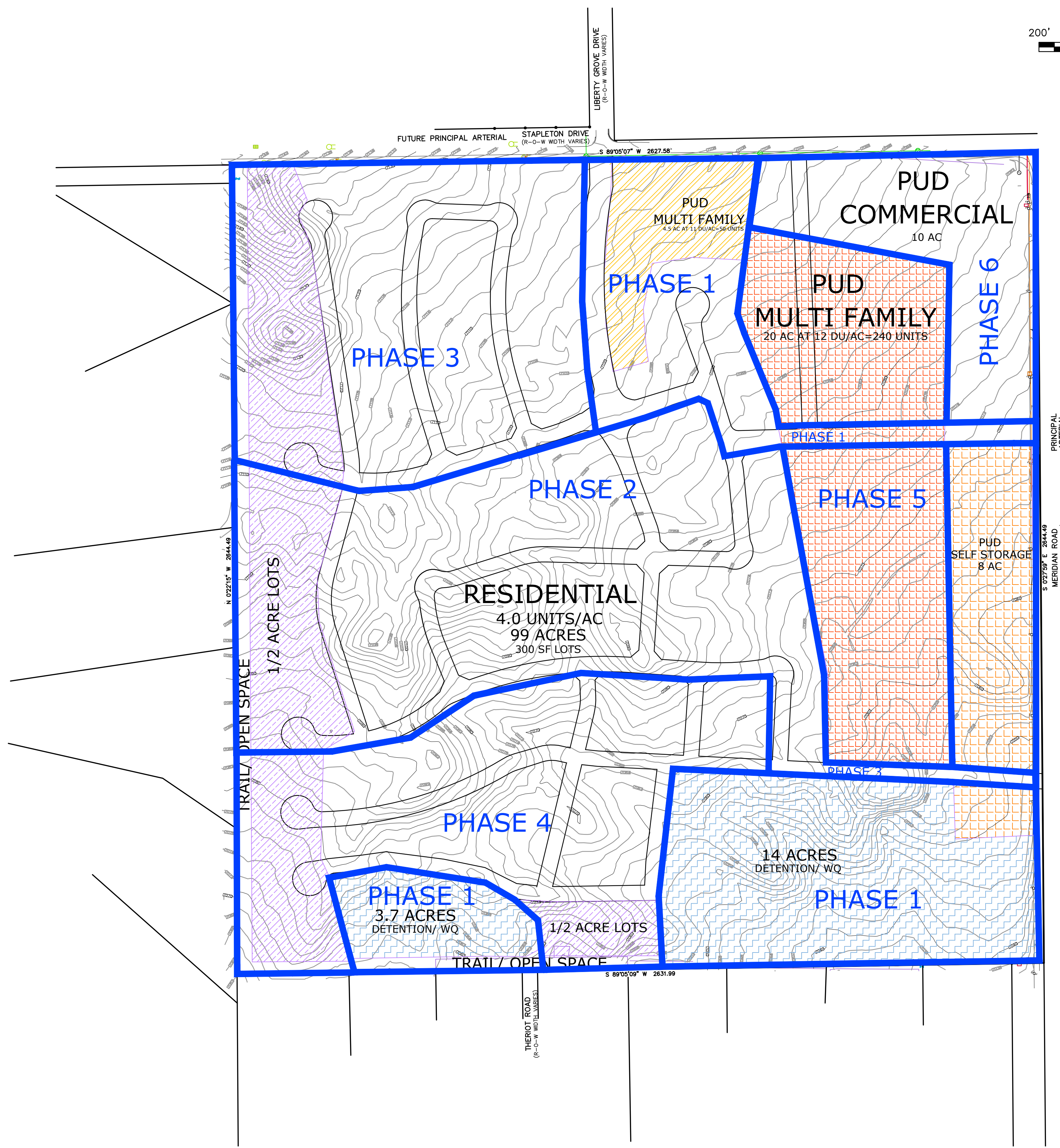
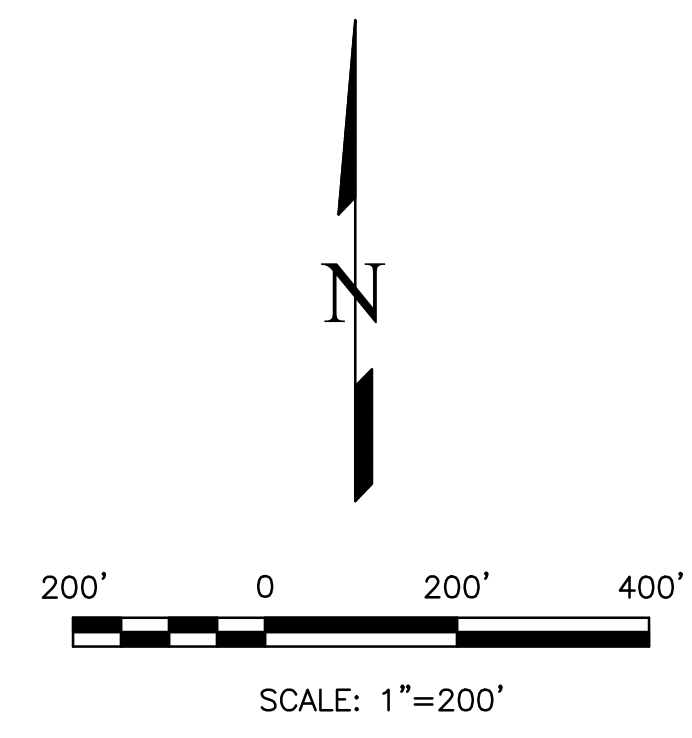
NE1/4 S36 T12S R65W

PHASING PLAN

NOVEMBER 2022

NOTES

1. THE MAIN ENTRANCE AT THE STAPLETON DRIVE AND LIBERTY GROVE DRIVE INTERSECTION WILL BE PART OF PHASE 1.
2. THE SANITARY SEWER LIFT STATION AND CONNECTION TO THE PUBLIC SYSTEM WILL BE PART OF PHASE 1.
3. DRAINAGE PATHS TO THE STORMWATER PONDS WILL BE PART OF PHASE 1.



REVISIONS	NO.	DESCRIPTION	DATE

UNTIL SUCH TIME AS THESE DRAWINGS ARE APPROVED BY THE APPROPRIATE AGENCIES, THIS DRAWING IS THE PROPERTY OF TETRA NOVA ENGINEERING, INC. APPROVES THEIR USE ONLY FOR THE PURPOSES DESIGNATED BY WRITTEN AUTHORIZATION.

PREPARED FOR:
MERIDIAN HILLS LLC
 ATTN: KEVIN DONOVAN
 106 CERRITO PT
 COLORADO SPRINGS, CO 80905
 719.473.0599

721 S. 29th STREET
 COLORADO SPRINGS, CO 80904
 OFFICE: 719-635-6422
 FAX: 719-635-6426
 www.tnecinc.com

AUTUMN ACRES
 PHASING PLAN

DESIGNED BY LD
DRAWN BY LD
CHECKED BY LD
H-SCALE AS NOTED
V-SCALE AS NOTED
JOB NO. 2199.13
DATE ISSUED 11/28/22
SHEET NO. 1 OF 1