



EL PASO COUNTY PLANNING & COMMUNITY DEVELOPMENT
SIGN APPLICATION

SC-18-064

DATE: _____

Business

Name: STARBUCKS
Address: 2457 N. MARKSHEFFEL
Zone: CR CAD-O
Legal Description:
LOT 2 CLAREMONT RANCH FIL NO 98

Type of Sign

Illuminated: ☒
Non-Illuminated: ☐
Valuation: _____

Storefront Length &/or
Width: 80 x 30

Proposed Sign Sq. Ft. 168.4

Existing Sign Sq. Ft. —

Total Sign Sq. Ft. 168.4

Contractor Information

Name: APER SIGNS & GRAPHICS

Address: 505 N. LINKLAD, #2
FT COLLINS, CO 80524

Phone: 970-980-6106

Type of License: B-D-5A (SIGN)

Contractor ID# 21735

Vicinity Map

Tax Schedule # _____
Please show major intersections.



Future reference,
please do not include
all signs in this line,
each wall has its own
measurement and
signs.

Elevation Drawing

Indicate storefront length & placement of
sign.

Sign Plan

(Please indicate dimensions and sign copy)

Approved

By: **Gabe Seigny**

Date: **11/26/2018**

El Paso County Planning & Community Development



Approved Date: _____
Denied Date: _____
Comments: _____

CR zoning
district allows
attached signage
of 1.5 sqft of sign
per linear foot of
wall frontage or
300 sqft,
whichever is
less, and allows
freestanding
signs

Community Development Use Only

Resubmittal? Yes ☐ No ☐

Checks payable to El

Directional
signs do not
require a
permit

Fee of \$262.00 must accompany this Application. Additional signs at time of f

STARBUCKS COFFEE #5333
Constitution & Marksheffel (RELO)
2457 N. Marksheffel Road
Colorado Springs, CO 80951



17-39026

***HILTON*DISPLAYS**

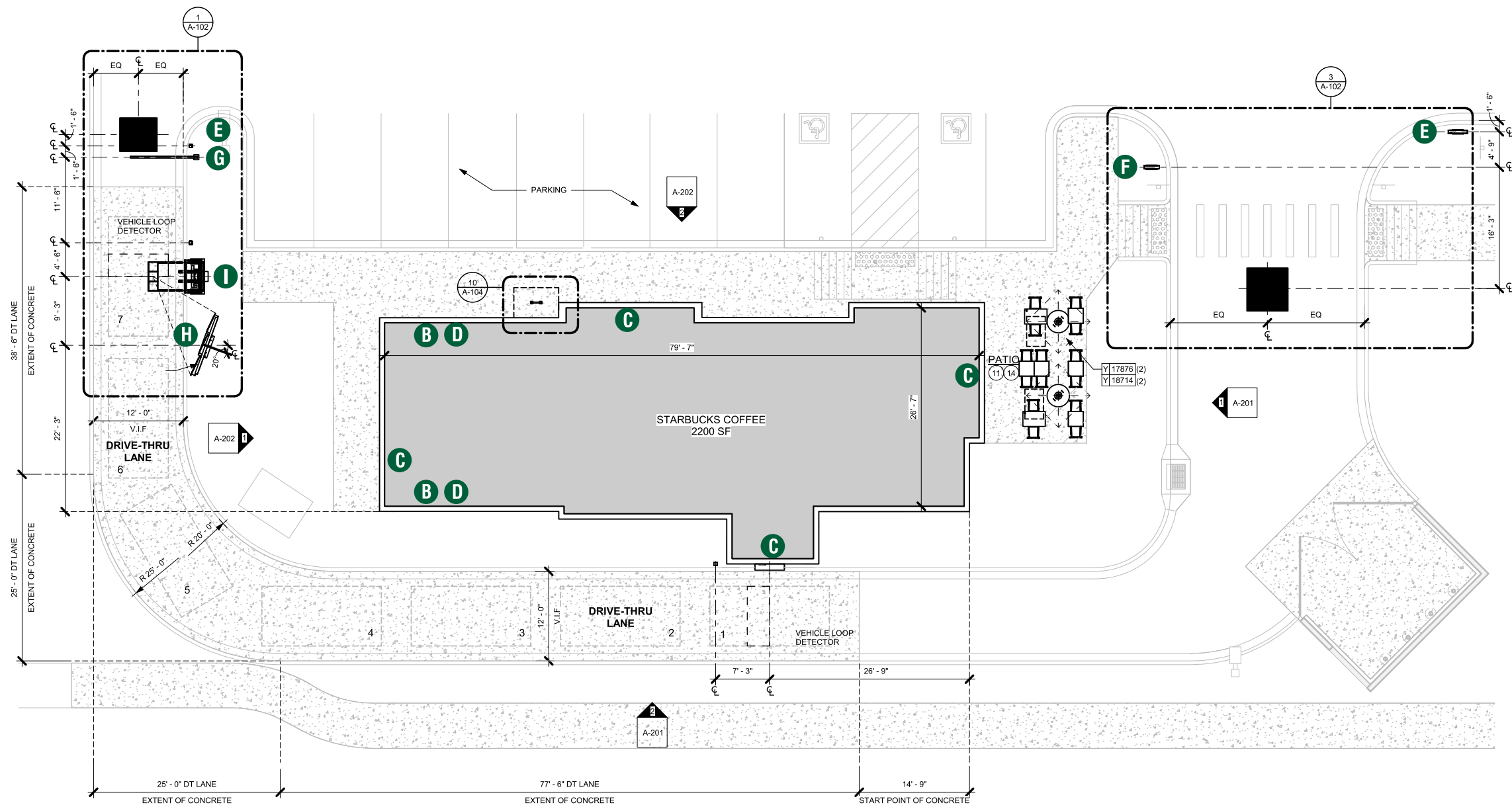
125 HILLSIDE DRIVE • GREENVILLE SC 29607

P 800 353 9132 • F 864 242 2204

www.hiltondisplays.com

SITE PLAN

- A MONUMENT - PANELS
- B 24" CHANNEL LETTERS
- C 60" SIREN
- D 48" DRIVE THRU CABINET-RH
- E 46" DT DIRECTIONAL
- F 46" TY/EO DIRECTIONAL
- G CLEARANCE BAR
- H MENU BOARD
- I DOS ON CANOPY / DCB



1 ENLARGED SITE PLAN
Scale: 1/8" = 1'-0"

HILTONDISPLAYS
125 HILLSIDE DRIVE • GREENVILLE SC 29607
P 800 353 9132 • F 864 242 2204
www.hiltondisplays.com

QID 17-39026

JOB NAME

Starbucks# 5333

LOCATION

2457 Marksheffel Road
Colorado Springs, CO

CUSTOMER CONTACT

SALESMAN / PM

Valerie Foster

DESIGNER

Chad Wike

DWG. DATE

5-9-18

REV. DATE / REVISION

10-05-18 / GTS

SCALE

As Noted

FILE

2018/Starbucks/
Colorado Springs CO/17-39026/
SB Colorado Springs CO 5333.cdr

DESIGN SPECIFICATIONS ACCEPTED BY:

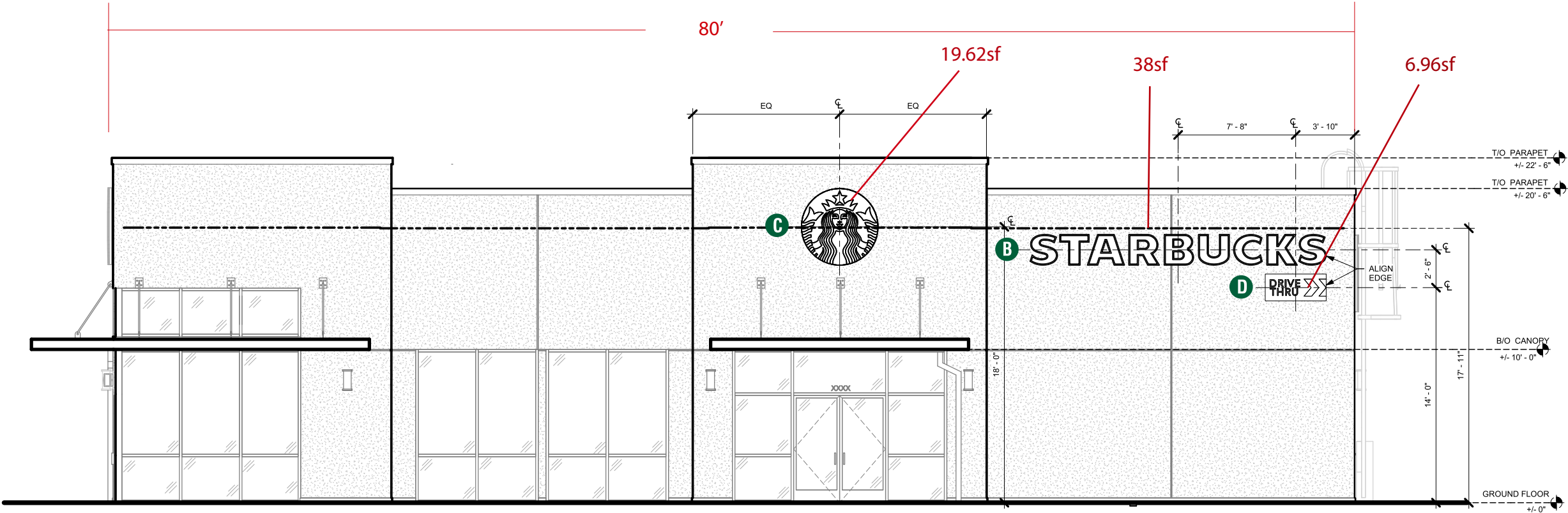
EST:	CLIENT:
SLS/PM:	LANDLORD:

THE INTENT OF THIS DRAWING IS TO SHOW A CONCEPTUAL REPRESENTATION OF THE PROPOSED SIGNAGE. DUE TO VARIATIONS IN PRINTING DEVICES AND SUBSTRATES, THE FINISHED PRODUCT MAY DIFFER SLIGHTLY FROM DRAWING.



ELEVATION

- A MONUMENT - PANELS
- B 24" CHANNEL LETTERS
- C 60" SIREN
- D 48" DRIVE THRU CABINET-RH
- E 46" DT DIRECTIONAL
- F 46" TY/EO DIRECTIONAL
- G CLEARANCE BAR
- H MENU BOARD
- I DOS ON CANOPY / DCB



2 NORTH ELEVATION
SCALE: 1/8" = 1'-0"

HILTONDISPLAYS
125 HILLSIDE DRIVE • GREENVILLE SC 29607
P 800 353 9132 • F 864 242 2204
www.hiltondisplays.com

QID 17-39026

JOB NAME

Starbucks# 5333

LOCATION

2457 Marksheffel Road
Colorado Springs, CO

CUSTOMER CONTACT

SALESMAN / PM

Valerie Foster

DESIGNER

Chad Wike

DWG. DATE

5-9-18

REV. DATE / REVISION

10-05-18 / GTS

SCALE

As Noted

FILE

2018/Starbucks/
Colorado Springs CO/17-39026/
SB Colorado Springs CO 5333.cdr

DESIGN SPECIFICATIONS ACCEPTED BY:

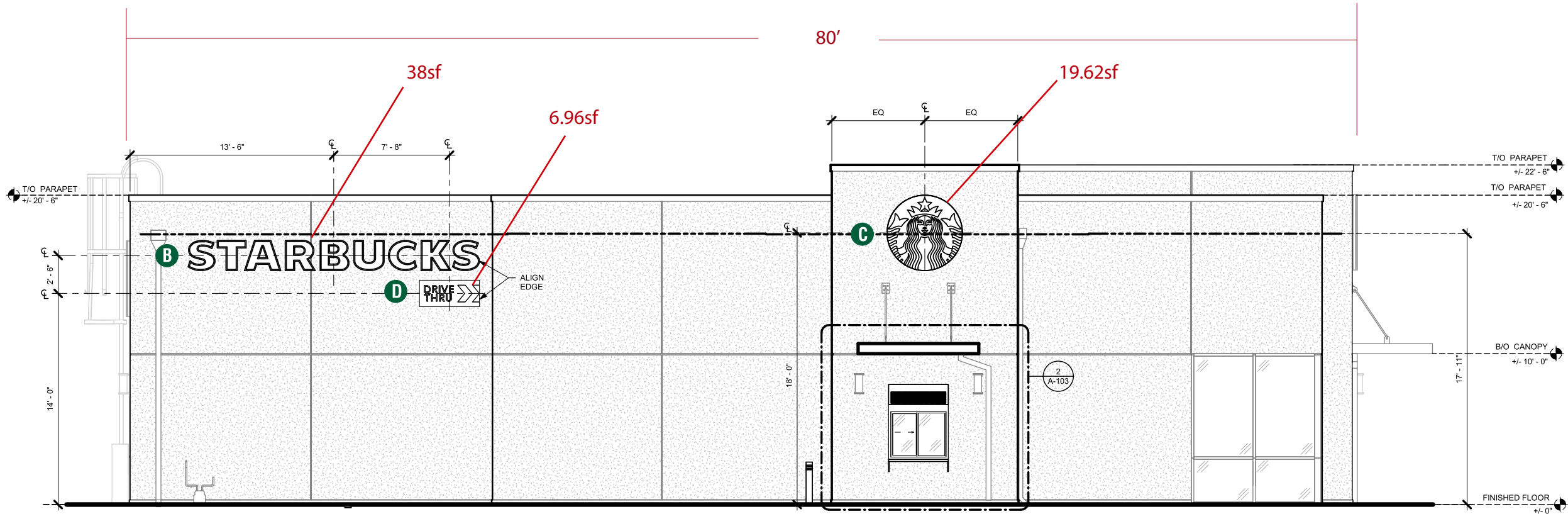
EST:	CLIENT:
SLS/PM:	LANDLORD:

THE INTENT OF THIS DRAWING IS TO SHOW A CONCEPTUAL REPRESENTATION OF THE PROPOSED SIGNAGE. DUE TO VARIATIONS IN PRINTING DEVICES AND SUBSTRATES, THE FINISHED PRODUCT MAY DIFFER SLIGHTLY FROM DRAWING.



ELEVATION

- A MONUMENT - PANELS
- B 24" CHANNEL LETTERS
- C 60" SIREN
- D 48" DRIVE THRU CABINET-RH
- E 46" DT DIRECTIONAL
- F 46" TY/EO DIRECTIONAL
- G CLEARANCE BAR
- H MENU BOARD
- I DOS ON CANOPY / DCB



2 SOUTH ELEVATION
SCALE: 1/8" = 1'-0"

HILTONDISPLAYS
125 HILLSIDE DRIVE • GREENVILLE SC 29607
P 800 353 9132 • F 864 242 2204
www.hiltondisplays.com

QID 17-39026

JOB NAME

Starbucks# 5333

LOCATION

2457 Marksheffel Road
Colorado Springs, CO

CUSTOMER CONTACT

SALESMAN / PM

Valerie Foster

DESIGNER

Chad Wike

DWG. DATE

5-9-18

REV. DATE / REVISION

10-05-18 / GTS

SCALE

3/32" = 1'

FILE

2018/Starbucks/
Colorado Springs CO/17-39026/
SB Colorado Springs CO 5333.cdr

DESIGN SPECIFICATIONS ACCEPTED BY:

EST:	CLIENT:
SLS/PM:	LANDLORD:

THE INTENT OF THIS DRAWING IS TO SHOW A CONCEPTUAL REPRESENTATION OF THE PROPOSED SIGNAGE. DUE TO VARIATIONS IN PRINTING DEVICES AND SUBSTRATES, THE FINISHED PRODUCT MAY DIFFER SLIGHTLY FROM DRAWING.



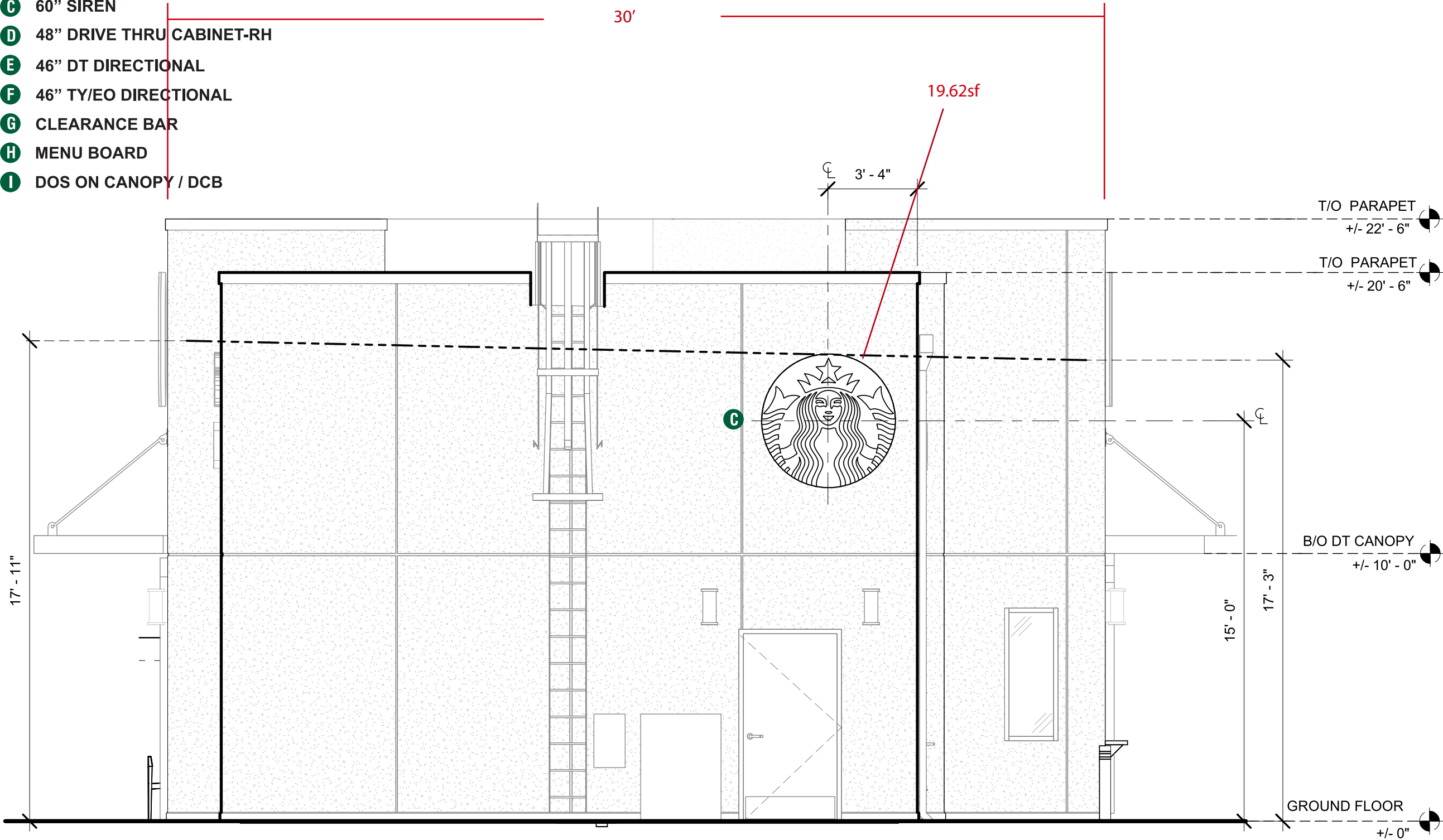
- A MONUMENT - PANELS**
- B 24" CHANNEL LETTERS**
- C 60" SIREN**
- D 48" DRIVE THRU CABINET-RH**
- E 46" DT DIRECTIONAL**
- F 46" TY/EO DIRECTIONAL**
- G CLEARANCE BAR**
- H MENU BOARD**
- I DOS ON CANOPY / DCB**



 Underwriters Laboratories Inc.

ELEVATION

- A MONUMENT - PANELS
- B 24" CHANNEL LETTERS
- C 60" SIREN
- D 48" DRIVE THRU CABINET-RH
- E 46" DT DIRECTIONAL
- F 46" TY/EO DIRECTIONAL
- G CLEARANCE BAR
- H MENU BOARD
- I DOS ON CANOPY / DCB



1 WEST ELEVATION

Scale: 1/4" = 1'-0"

HILTONDISPLAYS
125 HILLSIDE DRIVE • GREENVILLE SC 29607
P 800 353 9132 • F 864 242 2204
www.hiltondisplays.com

QID 17-39026

JOB NAME

Starbucks# 5333

LOCATION

2457 Marksheffel Road
Colorado Springs, CO

CUSTOMER CONTACT

SALESMAN / PM

Valerie Foster

DESIGNER

Chad Wike

DWG. DATE

5-9-18

REV. DATE / REVISION

10-05-18 / GTS

SCALE

As Noted

FILE

2018/Starbucks/
Colorado Springs CO/17-39026/
SB Colorado Springs CO 5333.cdr

DESIGN SPECIFICATIONS ACCEPTED BY:

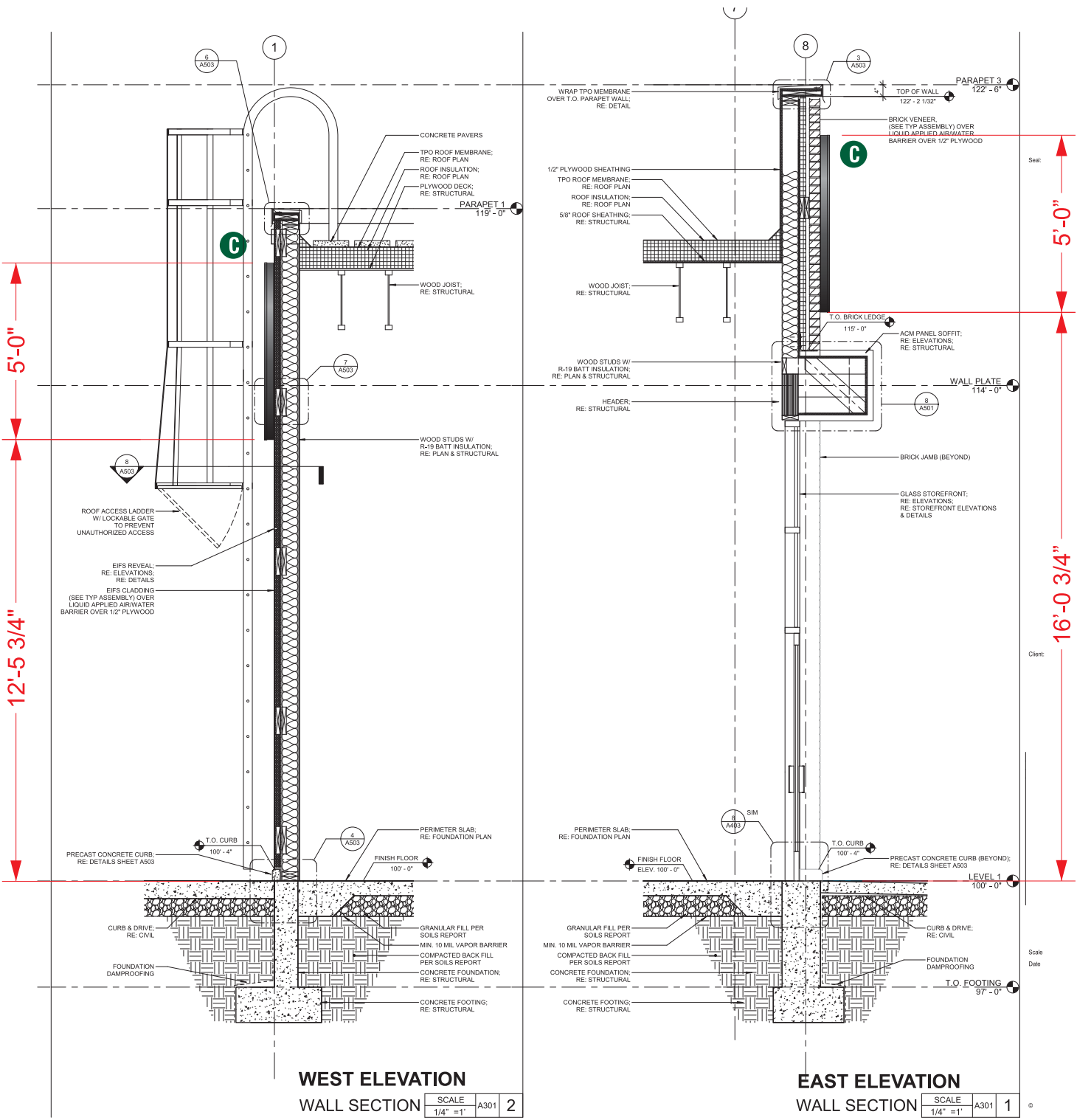
EST:	CLIENT:
SLS/PM:	LANDLORD:

THE INTENT OF THIS DRAWING IS TO SHOW A CONCEPTUAL REPRESENTATION OF THE PROPOSED SIGNAGE. DUE TO VARIATIONS IN PRINTING DEVICES AND SUBSTRATES, THE FINISHED PRODUCT MAY DIFFER SLIGHTLY FROM DRAWING.



ELEVATION

- A MONUMENT - PANELS
- B 24" CHANNEL LETTERS
- C 60" SIREN
- D 48" DRIVE THRU CABINET-RH
- E 46" DT DIRECTIONAL
- F 46" TY/EO DIRECTIONAL
- G CLEARANCE BAR
- H MENU BOARD
- I DOS ON CANOPY / DCB



COLOR LEGEND		
	PMS/PAINT	VINYL
	PMS 3425 C	3M 3630-76
	RAL 7021M	3M 3630-22
	PMS WHITE	3M 3630-20/ 7725-10 TRANSLUCENT OPAQUE
	PMS 369 C	NA
	REFL. WHITE	3M 680-10

HILTONDISPLAYS
125 HILLSIDE DRIVE • GREENVILLE SC 29607
P 800 353 9132 • F 864 242 2204
www.hiltondisplays.com

QID 17-39026

JOB NAME

Starbucks# 5333

LOCATION

**2457 Marksheffel Road
Colorado Springs, CO**

CUSTOMER CONTACT

SALESMAN / PM

Valerie Foster

DESIGNER

Chad Wike

DWG. DATE

5-9-18

REV. DATE / REVISION

10-05-18 / GTS

SCALE

As Noted

FILE

**2018/Starbucks/
Colorado Springs CO/17-39026/
SB Colorado Springs CO 5333.cdr**

DESIGN SPECIFICATIONS ACCEPTED BY:

EST: CLIENT:

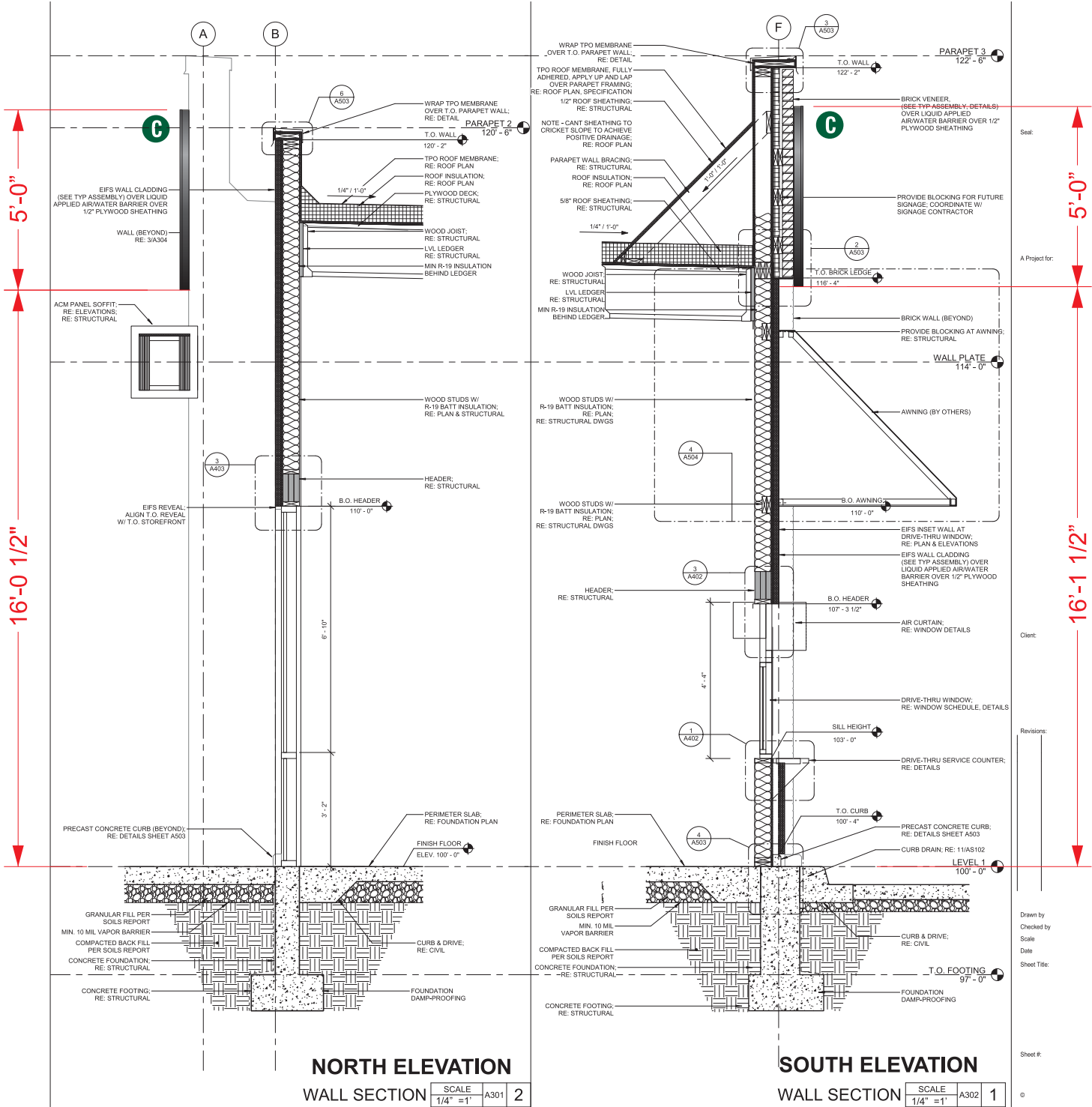
SLS/PM: LANDLORD:

THE INTENT OF THIS DRAWING IS TO SHOW A CONCEPTUAL REPRESENTATION OF THE PROPOSED SIGNAGE. DUE TO VARIATIONS IN PRINTING DEVICES AND SUBSTRATES, THE FINISHED PRODUCT MAY DIFFER SLIGHTLY FROM DRAWING.



ELEVATION

- A MONUMENT - PANELS
- B 24" CHANNEL LETTERS
- C 60" SIREN
- D 48" DRIVE THRU CABINET-RH
- E 46" DT DIRECTIONAL
- F 46" TY/EO DIRECTIONAL
- G CLEARANCE BAR
- H MENU BOARD
- I DOS ON CANOPY / DCB



COLOR LEGEND		
	PMS/PAINT	VINYL
	PMS 3425 C	3M 3630-76
	RAL 7021M	3M 3630-22
	PMS WHITE	3M 3630-20/ 7725-10 TRANSLUCENT OPAQUE
	PMS 369 C	NA
	REFL. WHITE	3M 680-10

QID 17-39026

JOB NAME

Starbucks# 5333

LOCATION

**2457 Marksheffel Road
Colorado Springs, CO**

CUSTOMER CONTACT

SALESMAN / PM

Valerie Foster

DESIGNER

Chad Wike

DWG. DATE

5-9-18

REV. DATE / REVISION

10-05-18 / GTS

SCALE

As Noted

FILE

**2018/Starbucks/
Colorado Springs CO/17-39026/
SB Colorado Springs CO 5333.cdr**

DESIGN SPECIFICATIONS ACCEPTED BY:

EST:	CLIENT:
SLS/PM:	LANDLORD:

THE INTENT OF THIS DRAWING IS TO SHOW A CONCEPTUAL REPRESENTATION OF THE PROPOSED SIGNAGE. DUE TO VARIATIONS IN PRINTING DEVICES AND SUBSTRATES, THE FINISHED PRODUCT MAY DIFFER SLIGHTLY FROM DRAWING.

MONUMENT - PANELS

A TBD



HILTONDISPLAYS
125 HILLSIDE DRIVE • GREENVILLE SC 29607
P 800 353 9132 • F 864 242 2204
www.hiltondisplays.com

QID 17-39026

JOB NAME

Starbucks# 5333

LOCATION

2457 Marksheffel Road
Colorado Springs, CO

CUSTOMER CONTACT

SALESMAN / PM

Valerie Foster

DESIGNER

Chad Wike

DWG. DATE

5-9-18

REV. DATE / REVISION

10-05-18 / GTS

SCALE

As Noted

FILE

2018/Starbucks/
Colorado Springs CO/17-39026/
SB Colorado Springs CO 5333.cdr

DESIGN SPECIFICATIONS ACCEPTED BY:

EST:	CLIENT:
SLS/PM:	LANDLORD:

THE INTENT OF THIS DRAWING IS TO SHOW A CONCEPTUAL REPRESENTATION OF THE PROPOSED SIGNAGE. DUE TO VARIATIONS IN PRINTING DEVICES AND SUBSTRATES, THE FINISHED PRODUCT MAY DIFFER SLIGHTLY FROM DRAWING.

 Underwriters Laboratories Inc.

DRY	<input type="checkbox"/>
DAMP	<input type="checkbox"/>
WET	<input checked="" type="checkbox"/>

24” CHANNEL LETTERS - RACEWAY

SBC-S11429-SB-SL

Qty 2

B



1 Front View

SPECIFICATIONS

Scale: 3/8" = 1' (11x17 Paper)

A Internally illuminated channel letters to be fabricated from .040/3003 aluminum with pre-painted White interiors and painted satin finish Black polyurethane exteriors. Letter backs to be aluminum pop-riveted to sidewalls and sealed.

B Faces to be 3/16” (5mm) White acrylic with 1” (25mm) Black trimcap retainer edging. Center of faces to be first surface 3M Scotchcal #3630-76 Holly Green vinyl with White show-through scratch borders.

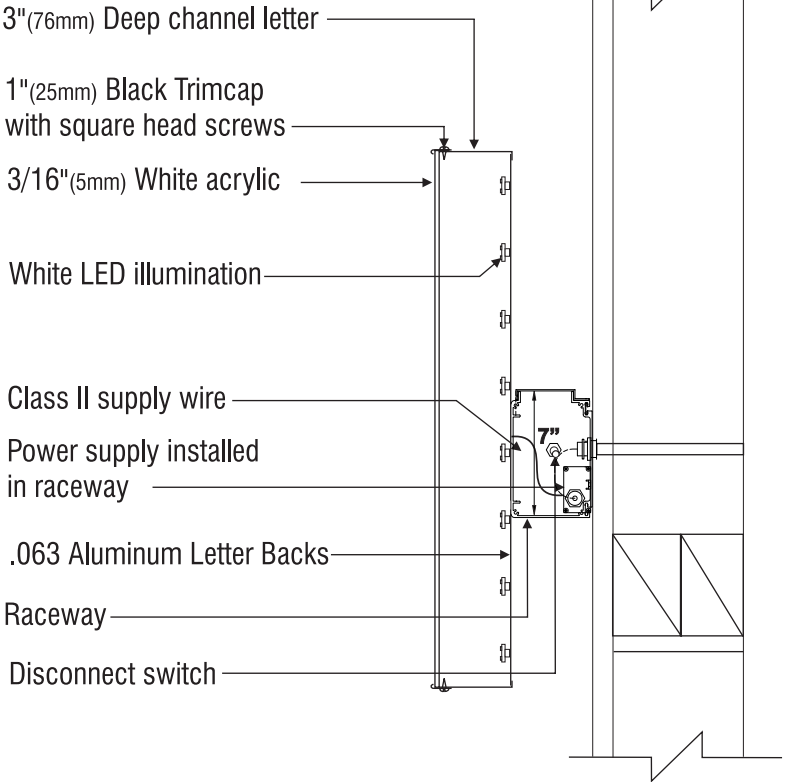
C Internally illuminate letters with Sloan LED’s with LED drivers located within raceway

D Raceway painted SW 7073 Network Gray



Exposed white border dimension provided on production patterns

Ltr.Ht.
24”



COLOR LEGEND		
	PMS/PAINT	VINYL
	PMS 3425 C	3M 3630-76
	RAL 7021M	3M 3630-22
	PMS WHITE	3M 3630-20/ 7725-10 TRANSLUCENT OPAQUE
	PMS 369 C	NA
	REFL. WHITE	3M 680-10

HILTONDISPLAYS
125 HILLSIDE DRIVE • GREENVILLE SC 29607
P 800 353 9132 • F 864 242 2204
www.hiltondisplays.com

QID 17-39026

JOB NAME

Starbucks# 5333

LOCATION

2457 Marksheffel Road
Colorado Springs, CO

CUSTOMER CONTACT

SALESMAN / PM

Valerie Foster

DESIGNER

Chad Wike

DWG. DATE

5-9-18

REV. DATE / REVISION

10-05-18 / GTS

SCALE

As Noted

FILE

2018/Starbucks/
Colorado Springs CO/17-39026/
SB Colorado Springs CO 5333.cdr

DESIGN SPECIFICATIONS ACCEPTED BY:

EST:	CLIENT:
SLS/PM:	LANDLORD:

THE INTENT OF THIS DRAWING IS TO SHOW A CONCEPTUAL REPRESENTATION OF THE PROPOSED SIGNAGE. DUE TO VARIATIONS IN PRINTING DEVICES AND SUBSTRATES, THE FINISHED PRODUCT MAY DIFFER SLIGHTLY FROM DRAWING.

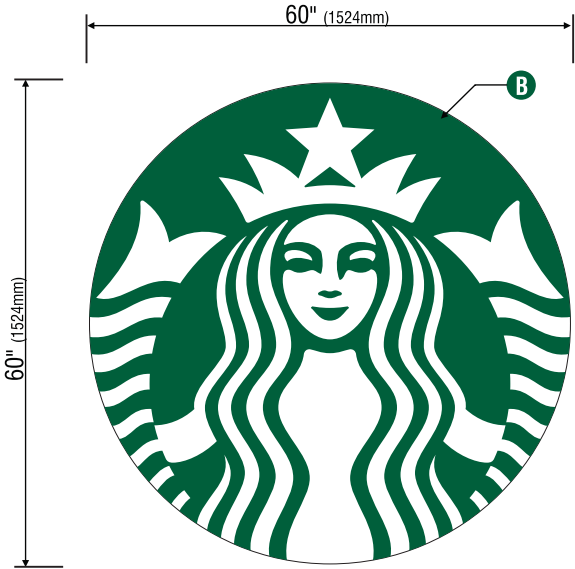


60” ILLUMINATED SIREN

SBC S13164-SL

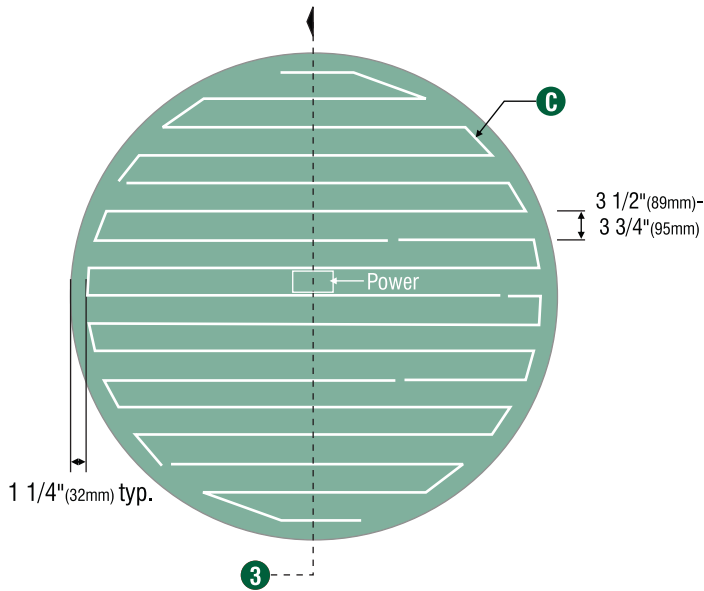
Qty. 4

C



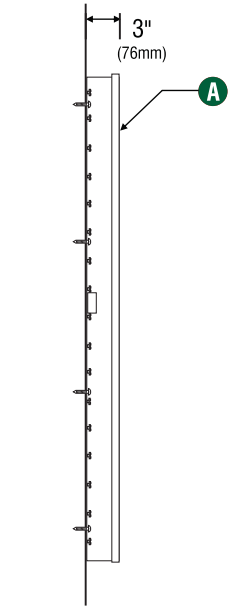
1 Front View

1/2" = 1' (11x17 Paper)

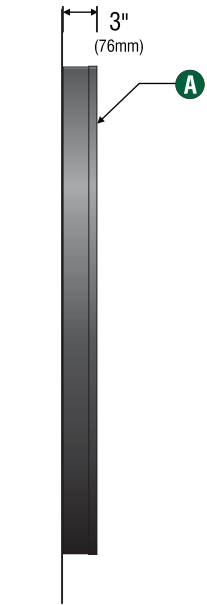


2 LED Detail

LEDs Provided By:
LUMificient
A HILTON Lighting Company



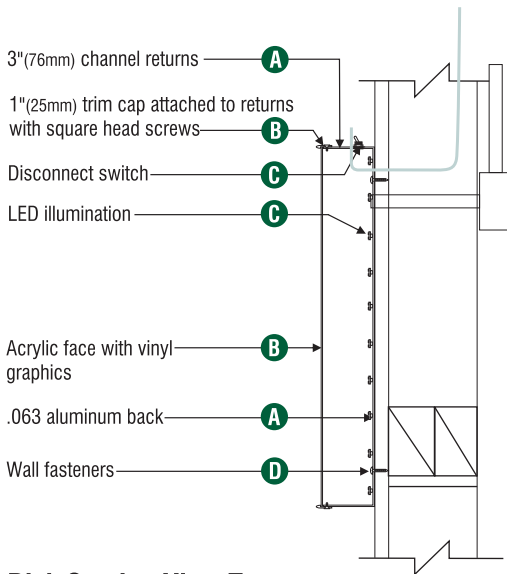
3 Section View



4 Side View

SPECIFICATIONS:

- A** Single faced internally illuminated wall mount logo disk. Cabinet to be 3" (76mm) deep, fabricated aluminum sidewalls and back. Paint cabinet black polyurethane. Faces to be 3/16" (5mm) White acrylic. 1" black trimcap with square head screws retainer edging.
- B** Graphics of logo to be 1st surface 3M Translucent Scotchcal vinyl- Holly Green #3630-76. Siren to show thru White.
- C** Internally illuminate logo disk with Sloan white LED's installed to back of disk. Power with self-contained Sloan power supply enclosed in painted white j-box. Fasten to wall with required fasteners.



5 Disk Section View Typ.

COLOR LEGEND		
	PMS/PAINT	VINYL
	PMS 3425 C	3M 3630-76
	RAL 7021M	3M 3630-22
	PMS WHITE	3M 3630-20/ 7725-10 TRANSLUCENT OPAQUE
	PMS 369 C	NA
	REFL. WHITE	3M 680-10

wall mount EVOLVED			
Size	Sq.Ft.	Sq.M.	Volts
60" (1524mm)	19.62	1.82	120

HILTONDISPLAYS

125 HILLSIDE DRIVE • GREENVILLE SC 29607
P 800 353 9132 • F 864 242 2204
www.hiltondisplays.com

QID 17-39026

JOB NAME

Starbucks# 5333

LOCATION

2457 Marksheffel Road
Colorado Springs, CO

CUSTOMER CONTACT

SALESMAN / PM

Valerie Foster

DESIGNER

Chad Wike

DWG. DATE

5-9-18

REV. DATE / REVISION

10-05-18 / GTS

SCALE

As Noted

FILE

2018/Starbucks/
Colorado Springs CO/17-39026/
SB Colorado Springs CO 5333.cdr

DESIGN SPECIFICATIONS ACCEPTED BY:

EST:	CLIENT:
SLS/PM:	LANDLORD:

THE INTENT OF THIS DRAWING IS TO SHOW A CONCEPTUAL REPRESENTATION OF THE PROPOSED SIGNAGE. DUE TO VARIATIONS IN PRINTING DEVICES AND SUBSTRATES, THE FINISHED PRODUCT MAY DIFFER SLIGHTLY FROM DRAWING.

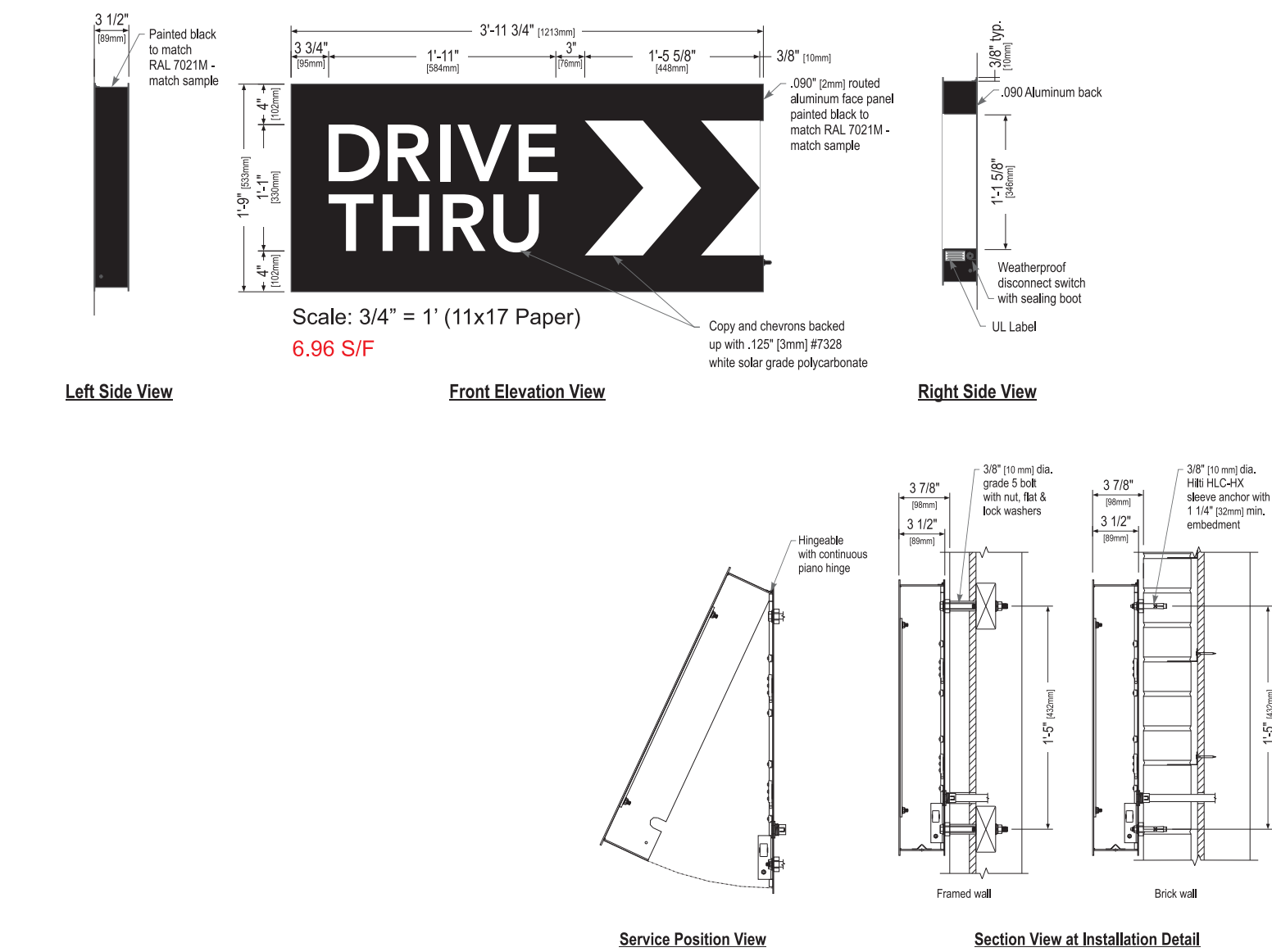


48" DT WALL SIGN

Qty 2

SBC S14099-SL

D



COLOR LEGEND		
	PMS/PAINT	VINYL
	PMS 3425 C	3M 3630-76
	RAL 7021M	3M 3630-22
	PMS WHITE	3M 3630-20/ 7725-10 TRANSLUCENT OPAQUE
	PMS 369 C	NA
	REFL. WHITE	3M 680-10

Sign Specifications:

- Cabinet:
- Fabricated .090" [2mm] aluminum housing painted black to match RAL 7021M with 3M #180-10 white vinyl end cap as shown.
 - Directional copy and chevrons backed up with .125" white polycarb. All polycarb face elements to be attached to aluminum face panel with weld studs.
 - Welded aluminum construction with no visible fasteners. Fasteners retaining the hinged face will be located on the bottom such that they are not visible. All fasteners used in the assembly of internal components shall be coated to prevent corrosion.
 - Internal structure of cabinet shall be per approved shop drawings.
 - Graphic elements are internally illuminated using Sloan LED system *or Starbucks approved equal*. LED's to be mounted on back panel with self-contained power supply. All electrical components are removable for service.

- Regulatory:
- Sign must meet all regulations in the National Electric Code as well as any local or state electrical codes.
 - As per NEC 600.6, sign is equipped with a service disconnect switch.
 - Sign must be listed as an Electric Sign per Underwriters Laboratories UL48 and/or CSA and bear the appropriate UL, CUL or CSA relevant certification marks.
 - Primary power by electrical contractor per NEC.

Size	Sq. Ft. ¹	Sq. Ft. ²	Volts	Amps
21"	4.52	6.96	120	0.85

1: Figured as illuminated center part
2: Figured as complete signage

HILTONDISPLAYS
125 HILLSIDE DRIVE • GREENVILLE SC 29607
P 800 353 9132 • F 864 242 2204
www.hiltondisplays.com

QID 17-39026

JOB NAME

Starbucks# 5333

LOCATION

2457 Marksheffel Road
Colorado Springs, CO

CUSTOMER CONTACT

SALESMAN / PM

Valerie Foster

DESIGNER

Chad Wike

DWG. DATE

5-9-18

REV. DATE / REVISION

10-05-18 / GTS

SCALE

As Noted

FILE

2018/Starbucks/
Colorado Springs CO/17-39026/
SB Colorado Springs CO 5333.cdr

DESIGN SPECIFICATIONS ACCEPTED BY:

EST:	CLIENT:
SLS/PM:	LANDLORD:

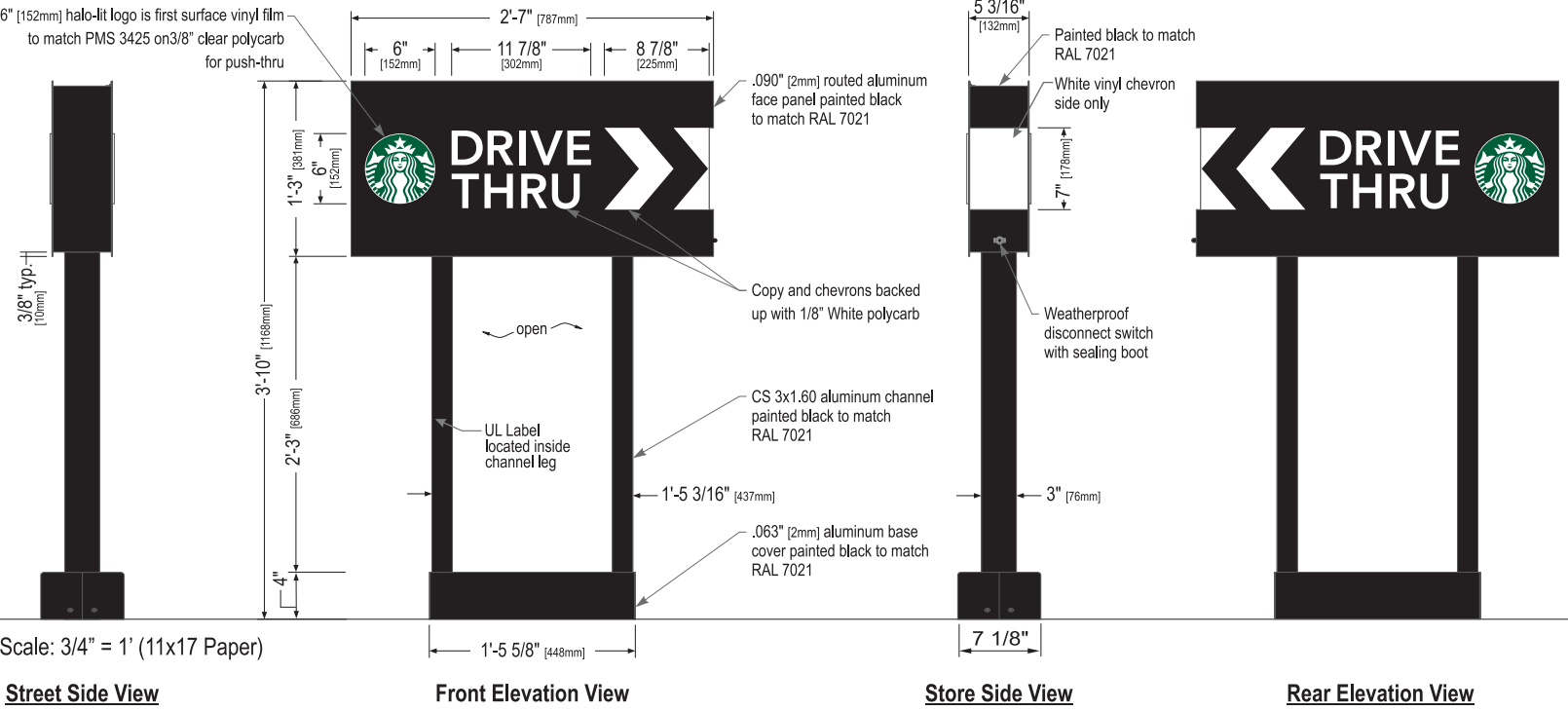
THE INTENT OF THIS DRAWING IS TO SHOW A CONCEPTUAL REPRESENTATION OF THE PROPOSED SIGNAGE. DUE TO VARIATIONS IN PRINTING DEVICES AND SUBSTRATES, THE FINISHED PRODUCT MAY DIFFER SLIGHTLY FROM DRAWING.



46” ILLUMINATED DIRECTIONAL <DT / DT>
SBC-S14104-DT-SL

Qty 2

E



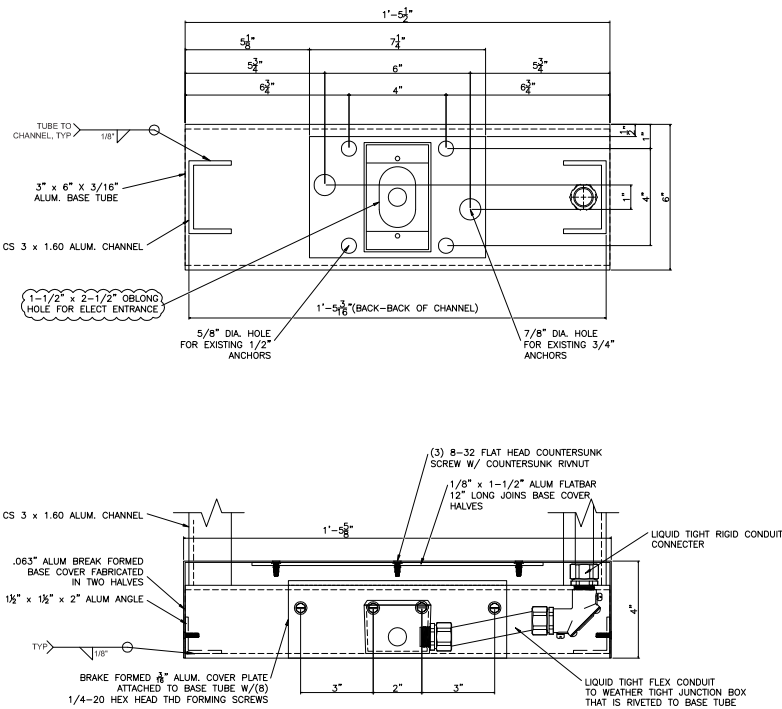
Sign Specifications:

- Cabinet:
- Fabricated .090" [2mm] aluminum housing painted black to match RAL 7021 with white end cap as shown.
 - Directional copy and chevrons backed up with 1/8" White polycarb. Siren logo is 6" [152mm] diameter, 3/8" clear polycarb routed to push thru aluminum face. Decorate logo with 1st surface computer cut vinyl film to match PMS 3425. Edges of push thru logo are to be polished. All acrylic face elements to be attached to aluminum face panel with weld studs.
 - Interior aluminum surfaces of sign cabinet to be painted white with Lacryl Starbrite.
 - Internal structure of cabinet shall be per approved shop drawings.
 - Graphic elements are internally illuminated using Sloan LED system or Starbucks approved equal. LED's to be mounted on an internal baffle with self-contained power supply. All electrical components are removable for service.

- Support:
- Supporting structure will be all welded aluminum tube and channel construction painted black to match RAL 7021 as per approved shop drawings and shall be integral to the sign cabinet.
 - Base tube will be constructed so that it can be retro-fittable to existing sign foundations. All foundations, existing and new must be analyzed for suitability and must meet all local city or state codes regulations.

Size	Sq. Ft. ¹	Sq. Ft. ²	Volts	Amps
46" (1168mm)	3.23	9.90	120	0.85

COLOR LEGEND		
	PMS/PAINT	VINYL
	PMS 3425 C	3M 3630-76
	RAL 7021M	3M 3630-22
	PMS WHITE	3M 3630-20/ 7725-10 TRANSLUCENT OPAQUE
	PMS 369 C	NA
	REFL. WHITE	3M 680-10



HILTONDISPLAYS

125 HILLSIDE DRIVE • GREENVILLE SC 29607
P 800 353 9132 • F 864 242 2204
www.hiltondisplays.com

QID 17-39026

JOB NAME

Starbucks# 5333

LOCATION

2457 Marksheffel Road
Colorado Springs, CO

CUSTOMER CONTACT

SALESMAN / PM

Valerie Foster

DESIGNER

Chad Wike

DWG. DATE

5-9-18

REV. DATE / REVISION

10-05-18 / GTS

SCALE

As Noted

FILE

2018/Starbucks/
Colorado Springs CO/17-39026/
SB Colorado Springs CO 5333.cdr

DESIGN SPECIFICATIONS ACCEPTED BY:

EST:	CLIENT:
SLS/PM:	LANDLORD:

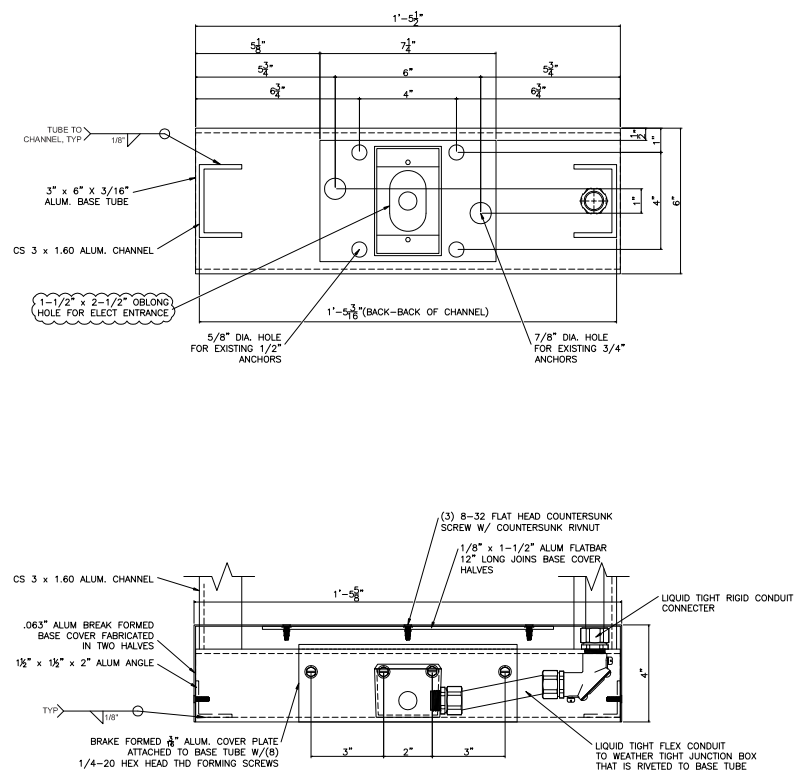
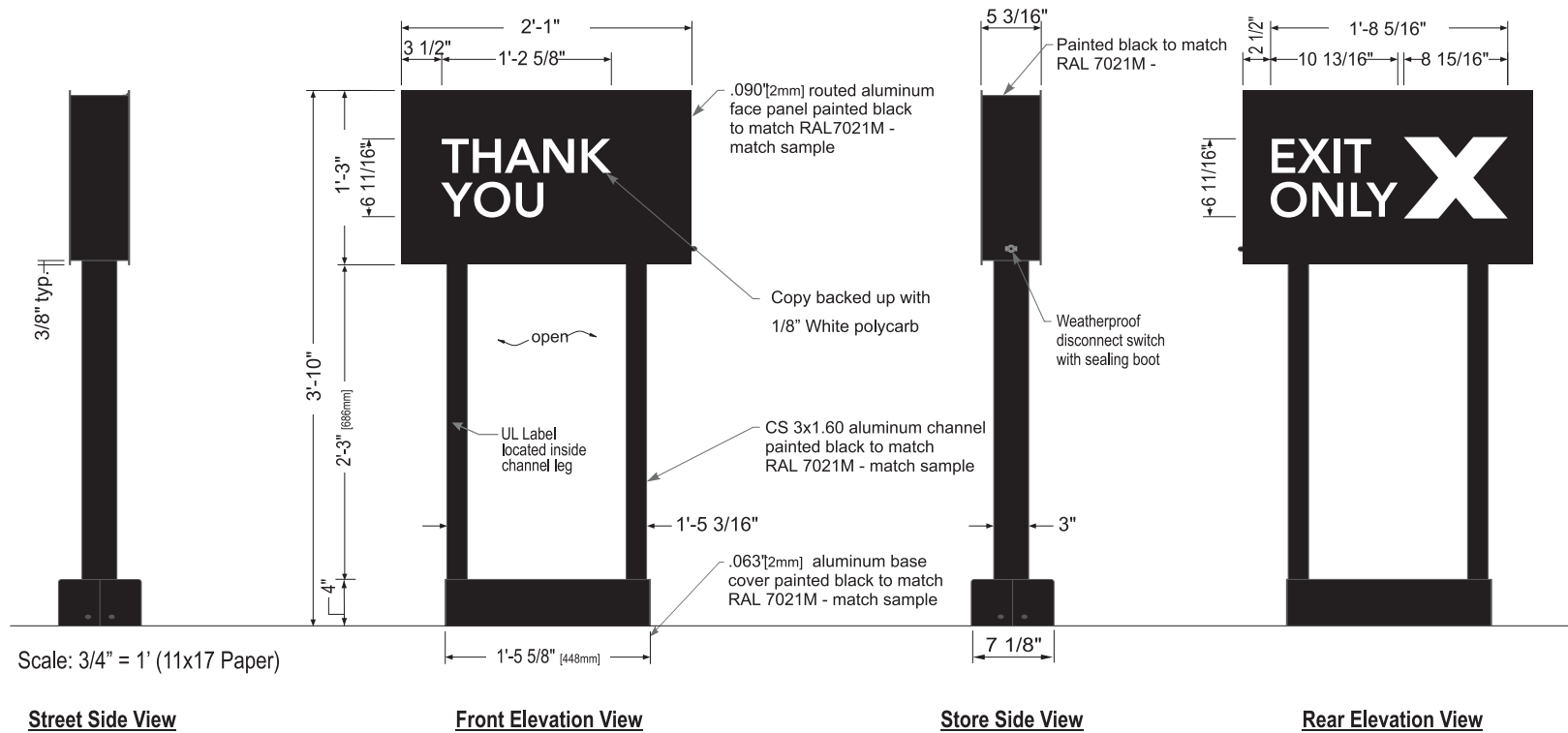
THE INTENT OF THIS DRAWING IS TO SHOW A CONCEPTUAL REPRESENTATION OF THE PROPOSED SIGNAGE. DUE TO VARIATIONS IN PRINTING DEVICES AND SUBSTRATES, THE FINISHED PRODUCT MAY DIFFER SLIGHTLY FROM DRAWING.








Qty 1

F

F



COLOR LEGEND		
	PMS/PAINT	VINYL
	PMS 3425 C	3M 3630-76
	RAL 7021M	3M 3630-22
	PMS WHITE	3M 3630-20/ 7725-10 TRANSLUCENT OPAQUE
	PMS 369 C	NA
	REFL. WHITE	3M 680-10

Sign Specifications:

Cabinet:

- Fabricated .090" [2mm] aluminum housing painted black to match RAL 7021M.
- Areas using black paint to match RAL 7021M shall have a max 20% gloss level, match sample.
- Directional copy backed up with .125" [3mm] white solar grade polycarbonate matching R&H #7328.
- Interior aluminum surfaces of sign cabinet to be painted white with Lacryl Starbrite.
- Welded aluminum construction. All fasteners used in the assembly of internal components shall be coated to prevent corrosion.
- Internal structure of cabinet shall be per approved shop drawings.
- Graphic elements are internally illuminated using Sloan LED system *or Starbucks approved equal*. LED's to be mounted on an internal baffle with self-contained power supply. All electrical components are removable for service.

Support:

- Supporting structure will be all welded aluminum tube and channel construction painted black to match RAL 7021M as per approved shop drawings and shall be integral to the sign cabinet.
- Areas using black paint to match RAL 7021M shall have a max 20% gloss level, match sample.
- Base will be constructed so that it can be retro-fittable to existing sign foundations. All foundations, existing and new must be analyzed for suitability and must meet all local city or state codes regulations.

Regulatory:

- Sign must meet all regulations in the National Electric Code as well as any local or state electrical codes.
- As per NEC 600.6, sign is equipped with a service disconnect switch.
- Sign must be listed as an Electric Sign per Underwriters Laboratories UL48 and/or CSA and bear the appropriate UL, CUL or CSA relevant certification marks.
- Primary power by electrical contractor per NEC.

Size	Sq. Ft. ¹	Sq. Ft. ²	Volts	Amps
46" (1168mm)	2.60	7.99	120	0.85



QID 17-39026

JOB NAME

Starbucks# 5333

LOCATION

2457 Marksheffel Road
Colorado Springs, CO

CUSTOMER CONTACT

SALESMAN / PM

Valerie Foster

DESIGNER

Chad Wike

DWG. DATE

5-9-18

REV. DATE / REVISION

10-05-18 / GTS

SCALE

As Noted

FILE

2018/Starbucks/
Colorado Springs CO/17-39026/
SB Colorado Springs CO 5333.cdr

DESIGN SPECIFICATIONS ACCEPTED BY:

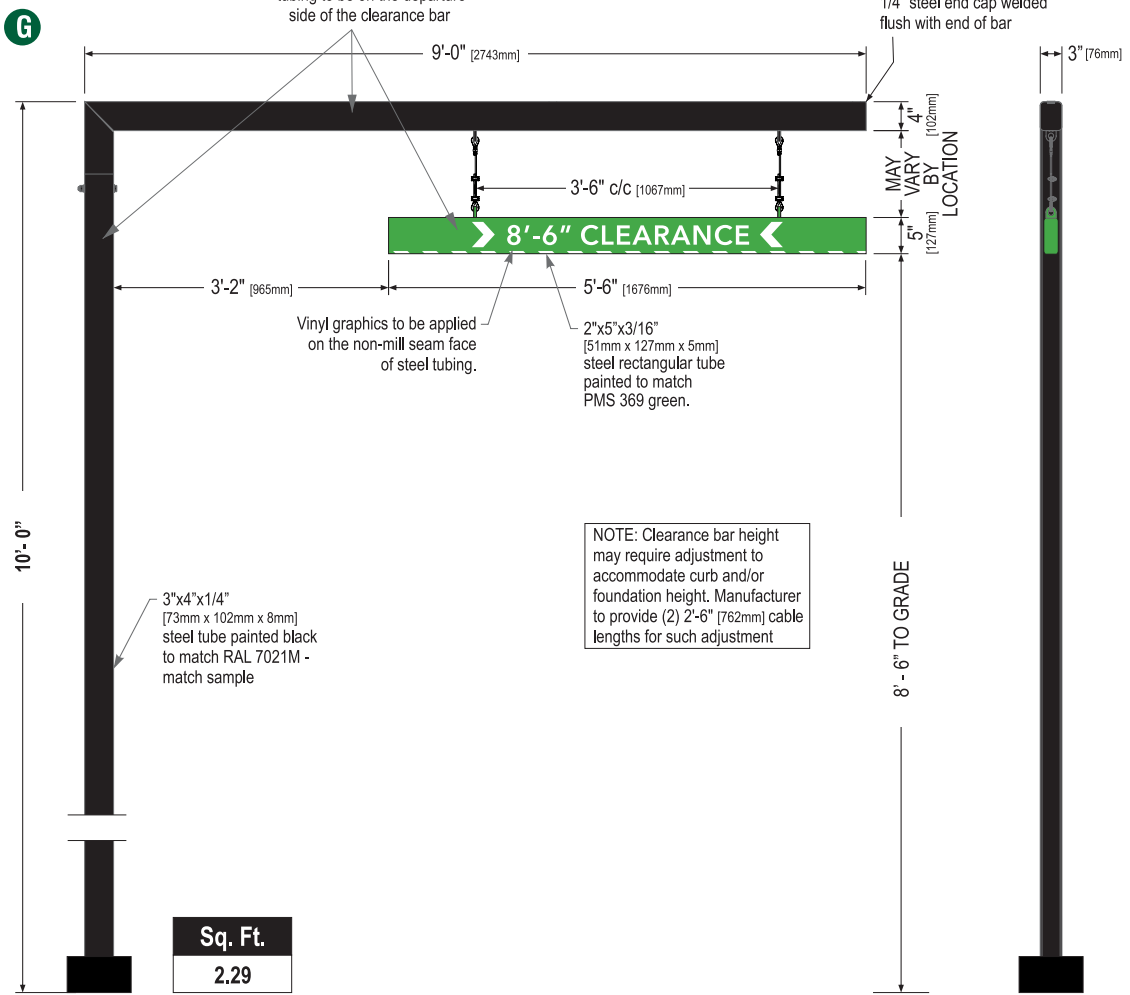
EST:	CLIENT:
SLS/PM:	LANDLORD:

THE INTENT OF THIS DRAWING IS TO SHOW A CONCEPTUAL REPRESENTATION OF THE PROPOSED SIGNAGE. DUE TO VARIATIONS IN PRINTING DEVICES AND SUBSTRATES, THE FINISHED PRODUCT MAY DIFFER SLIGHTLY FROM DRAWING.



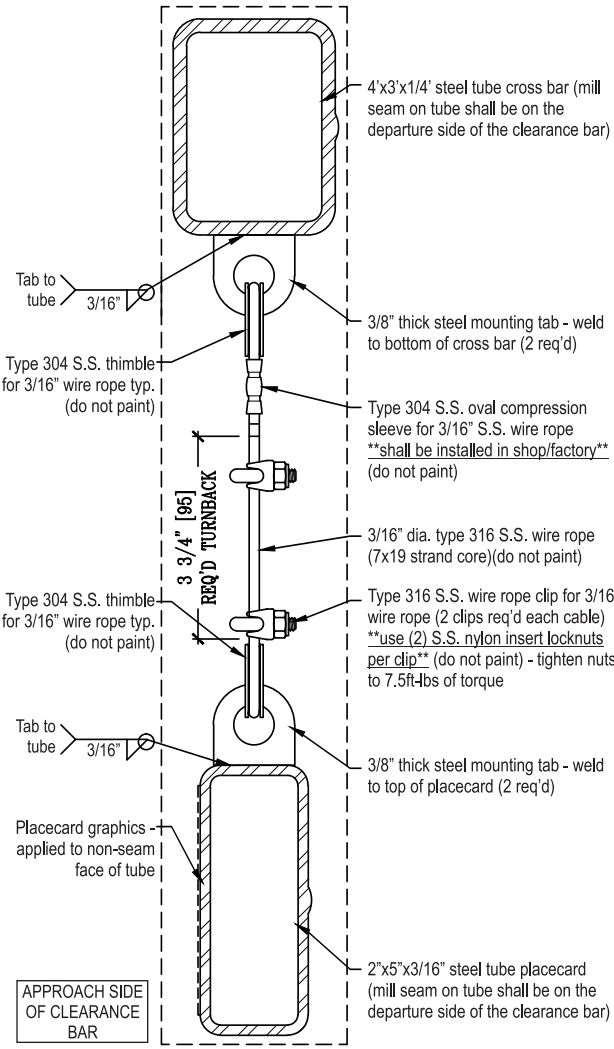
CLEARANCE BAR WITH BASE COVER SBC S14106-SHB-C-10

Qty. 1
(Standard Wind Load)

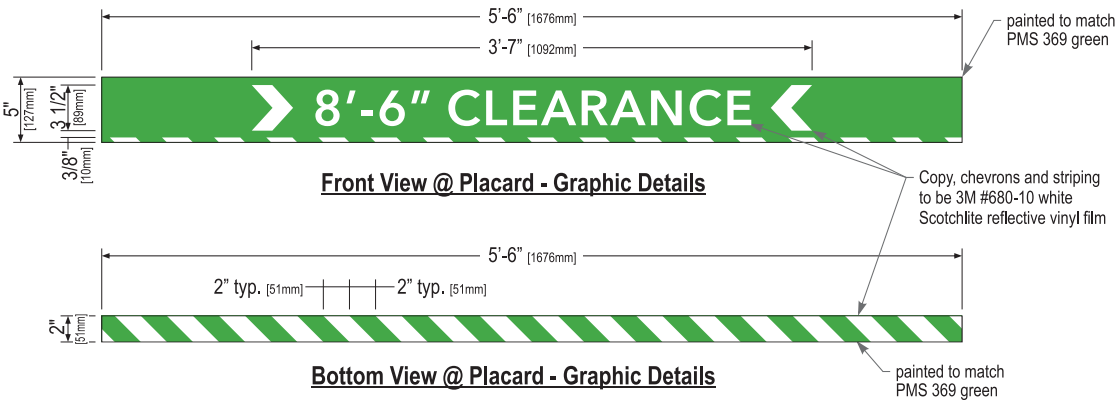


Front Elevation View

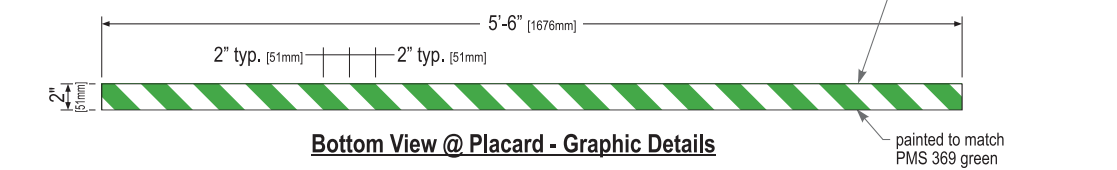
Right Side View



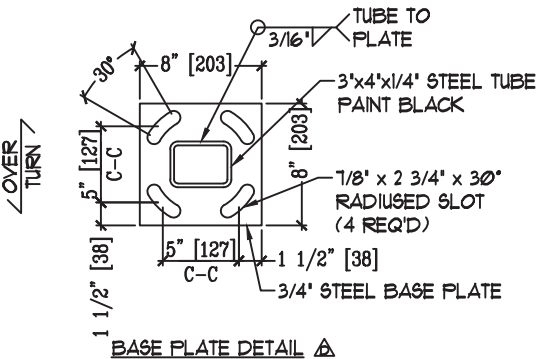
End Section View



Front View @ Placard - Graphic Details

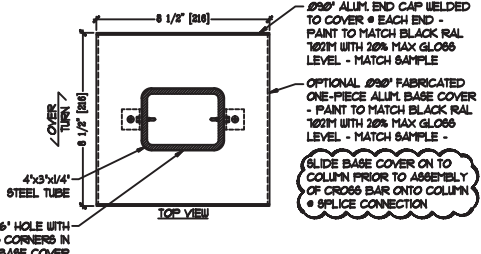
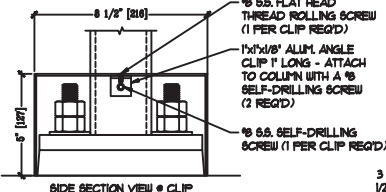
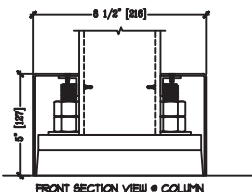
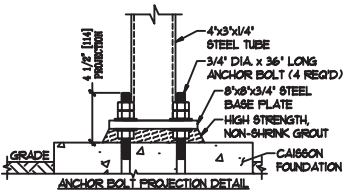
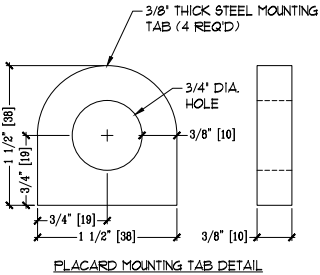


Bottom View @ Placard - Graphic Details



BASE PLATE DETAIL A

COLOR LEGEND		
	PMS/PAINT	VINYL
	PMS 3425 C	3M 3630-76
	RAL 7021M	3M 3630-22
	PMS WHITE	3M 3630-20/ 7725-10 TRANSLUCENT OPAQUE
	PMS 369 C	NA
	REFL. WHITE	3M 680-10



Sign Specifications:

- Scraper Bar:
- 2"x5" [51mm x 127mm] steel tube painted to match PMS 369 green.
 - Flush steel end caps painted to match PMS 369 green.
 - Copy and chevrons to be 1st surface computer cut 3M #680-10 white Scotchlite reflective vinyl film.
 - Bottom striping to be 1st surface computer cut 3M #680-10 white Scotchlite reflective vinyl film. Striping extends 3/8" [10mm] onto front face.
 - Suspend from support with SS cable & hardware. Cable provided requires field adjustment for proper clearance height.

- Support:
- Supporting structure will be all welded steel tube construction painted black to match RAL 7021M as per approved shop drawings.
 - Base tube will be constructed so that it can be retro-fittable to existing sign foundations. All foundations, existing and new must be analyzed for suitability and must meet all local city or state codes regulations.

HILTONDISPLAYS
125 HILLSIDE DRIVE • GREENVILLE SC 29607
P 800 353 9132 • F 864 242 2204
www.hiltondisplays.com

QID 17-39026

JOB NAME

Starbucks# 5333

LOCATION

**2457 Marksheffel Road
Colorado Springs, CO**

CUSTOMER CONTACT

SALESMAN / PM

Valerie Foster

DESIGNER

Chad Wike

DWG. DATE

5-9-18

REV. DATE / REVISION

10-05-18 / GTS

SCALE

As Noted

FILE

**2018/Starbucks/
Colorado Springs CO/17-39026/
SB Colorado Springs CO 5333.cdr**

DESIGN SPECIFICATIONS ACCEPTED BY:

EST:	CLIENT:
SLS/PM:	LANDLORD:

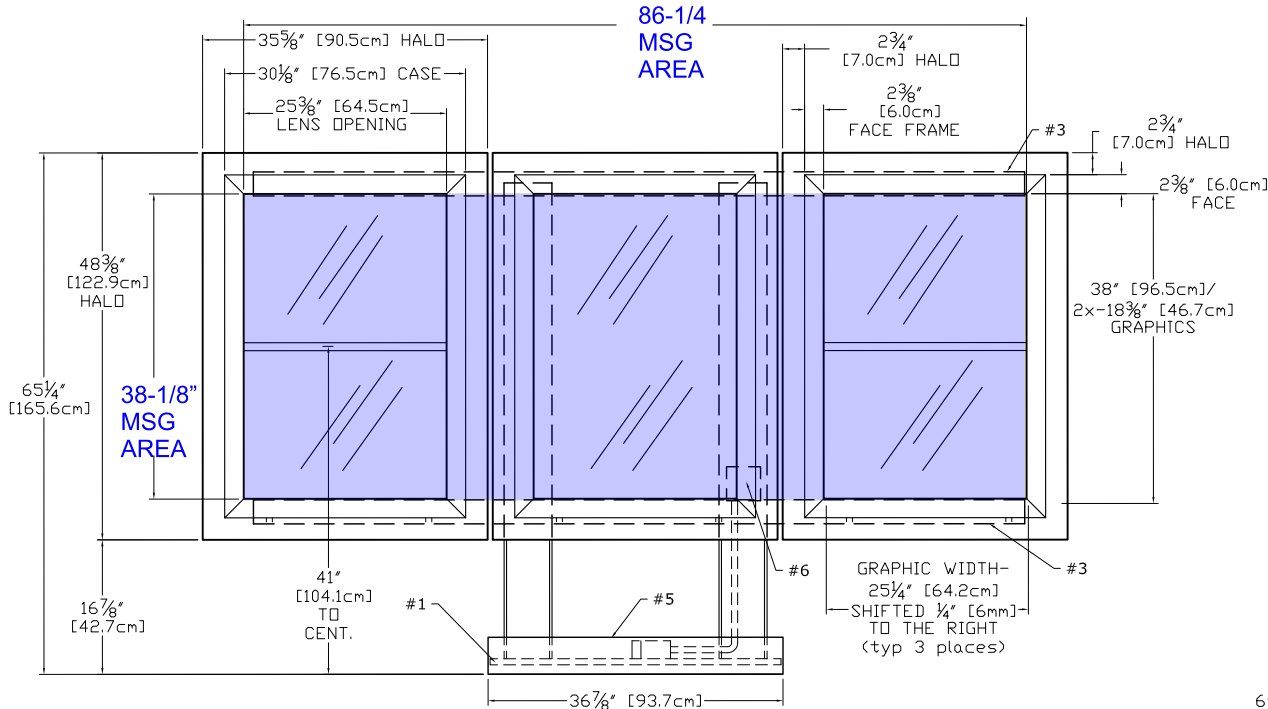
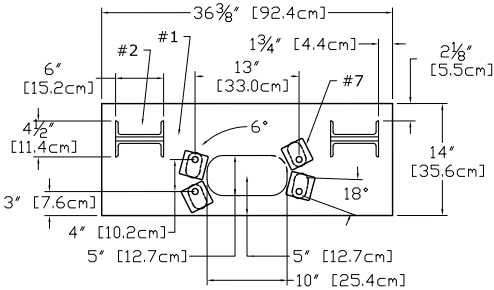
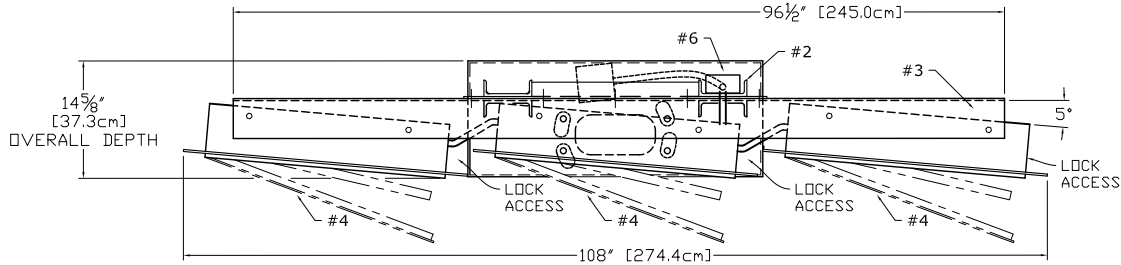
THE INTENT OF THIS DRAWING IS TO SHOW A CONCEPTUAL REPRESENTATION OF THE PROPOSED SIGNAGE. DUE TO VARIATIONS IN PRINTING DEVICES AND SUBSTRATES, THE FINISHED PRODUCT MAY DIFFER SLIGHTLY FROM DRAWING.

**Underwriters
Laboratories Inc.**

**DRY
DAMP
WET**

5-PANEL MENU - FREESTANDING

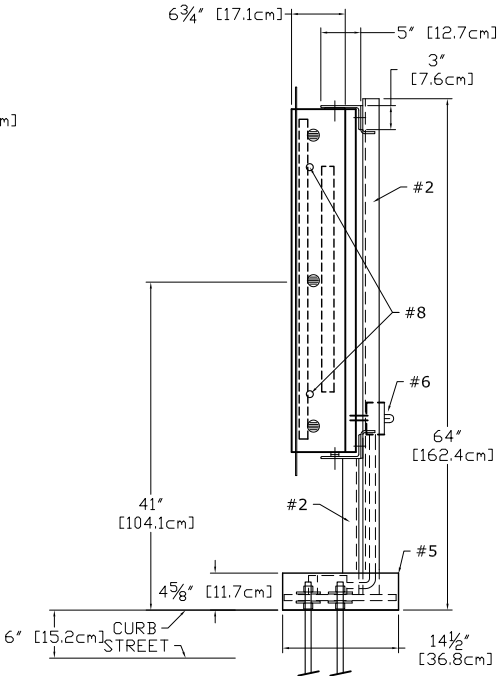
Qty. 1



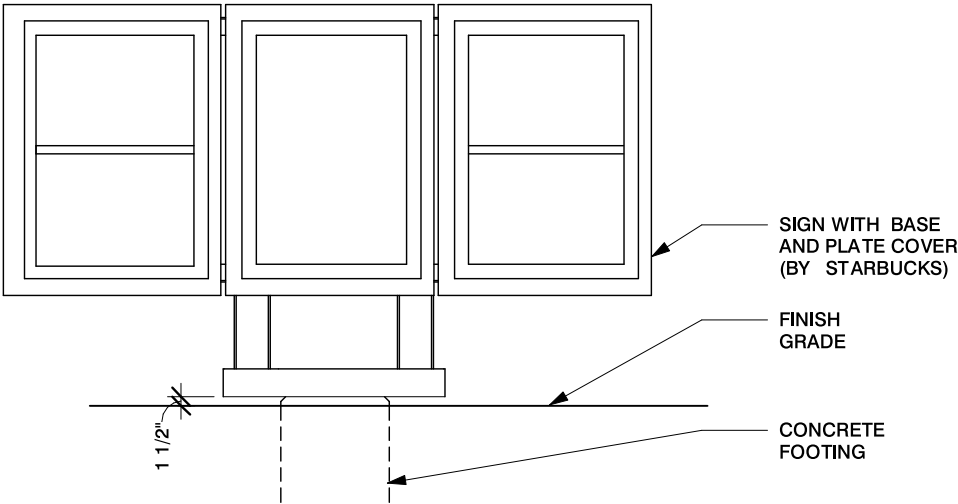
MESSAGE AREA = (86.25 * 38.125) / 144 = 22.9 SQ FT

DTE - MENU 5 PANEL FREESTANDING

Scale: 1/2" = 1' (11x17 paper)



- #1 - 3/4" [19mm] STEEL BASE PLATE w/ 18deg HOLES PATTERN ROTATED FOR 15deg THRU 3deg POSITION
- #2 - C6X10.5 (6"x2"x5 1/16") STEEL POST (2x)
- #3 - 5"x3"x1/4" STEEL SUPPORT ANGLES (2x) (BOLTED TO WELDED 1/4" STEEL CROSSBARS)
- #4 - EXTRUDED ALUMINUM MENU BOARDS (3x) ONE FULL AND TWO SPLIT PANEL LIGHTBOXES ONE - 25 1/4"x38" AND FOUR 25 1/4"x18 3/8" GRAPHICS ALL GRAPHIC ASSEMBLIES SHIFTED 1/4" TO RIGHT STANDARD LED TUBE LIGHTING, SIDE LOCKS
- #5 - WELDED ALUMINUM BASE COVER
- #6 - WATER-TIGHT BOX w/SWITCH & SENSOR, RIDGID CONDUIT RUN TO SECOND EXT BOX BELOW BASE COVER, 120 WATT, 0.90Aac
- #7 - 8 BASE WASHERS, 1/4" THICK
- #8 - TWO SIDE MOUNT LOCKS per MENUBOARD RETAIN EXISTING KEY #E3-26-819-15



DTE - MENU 5 PANEL FREESTANDING

Scale: 3/8" = 1' (11x17 paper)

HILTONDISPLAYS
125 HILLSIDE DRIVE • GREENVILLE SC 29607
P 800 353 9132 • F 864 242 2204
www.hiltondisplays.com

QID 17-39026

JOB NAME

Starbucks# 5333

LOCATION

**2457 Marksheffel Road
Colorado Springs, CO**

CUSTOMER CONTACT

SALESMAN / PM

Valerie Foster

DESIGNER

Chad Wike

DWG. DATE

5-9-18

REV. DATE / REVISION

10-05-18 / GTS

SCALE

As Noted

FILE

**2018/Starbucks/
Colorado Springs CO/17-39026/
SB Colorado Springs CO 5333.cdr**

DESIGN SPECIFICATIONS ACCEPTED BY:

EST:	CLIENT:
SLS/PM:	LANDLORD:

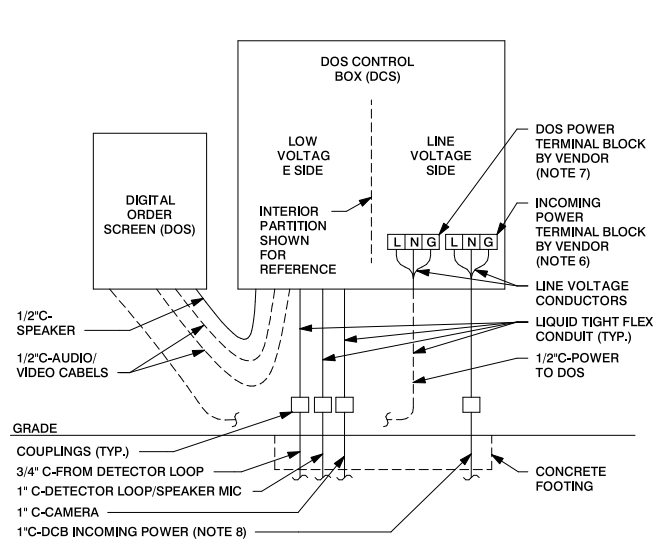
THE INTENT OF THIS DRAWING IS TO SHOW A CONCEPTUAL REPRESENTATION OF THE PROPOSED SIGNAGE. DUE TO VARIATIONS IN PRINTING DEVICES AND SUBSTRATES, THE FINISHED PRODUCT MAY DIFFER SLIGHTLY FROM DRAWING.



DOS ON CANOPY - DCB ON UNISTRUT

Qty. 1

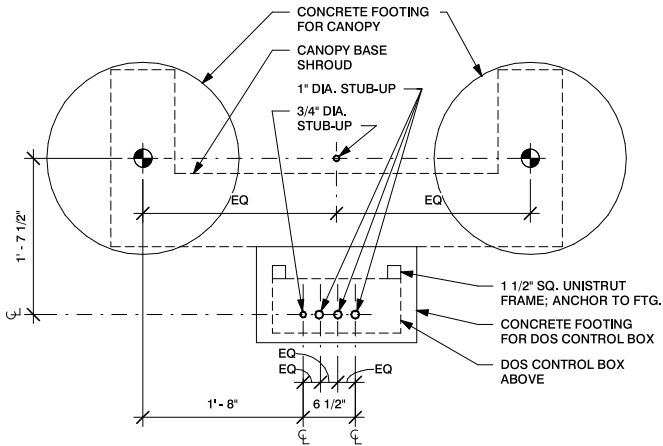
1



DTE - DOS CONTROL BOX WIRING

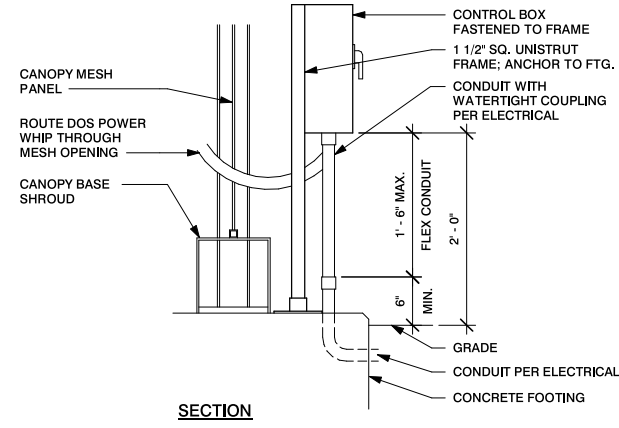
Scale: 1/2" = 1' (11x17 paper)

- LEGEND
: DOS WHIP
--- CONDUIT BY EC
- NOTES:
1. ALL SHOWN SHALL BE INSTALLED PER THIS DETAIL, CODE AND MANUFACTURER'S INSTRUCTIONS.
2. CONFIRM MOUNTING POSITIONS OF ALL DEVICES SHOWN WITH GC AND VENDOR.
3. EC TO PROVIDE, INSTALL AND CONNECT ALL LINE VOLTAGE CONDUCTORS.
4. EC TO CONNECT DEDICATED POWER BETWEEN DOS AND DCB. DCB VENDOR TO CONNECT ALL LOW VOLTAGE CABLING, INCLUDING DOS WHIPS TO DCB.
5. TERMINATE INCOMING POWER ON TERMINAL BLOCKS LABELED INCOMING DEDICATED POWER.
6. TERMINATE POWER TO DOS ON TERMINAL BLOCKS LABELED DOS DEDICATED POWER.
7. POWER TO DCB SHALL BE INDIVIDUAL BRANCH CIRCUIT IN DEDICATED CONDUIT (I.E. NOT BE ON EMS OR LIGHTING CONTROL).



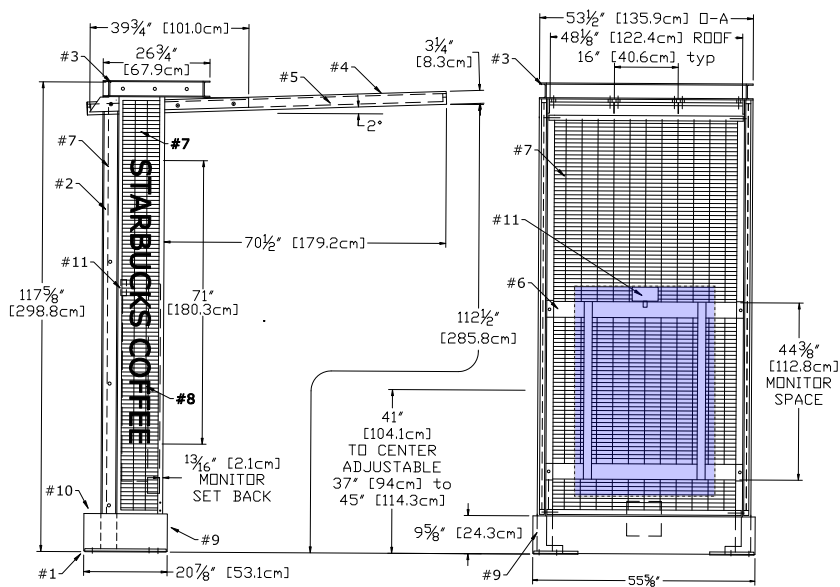
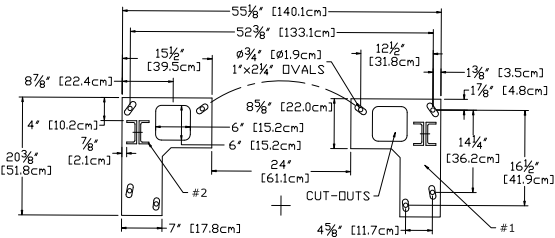
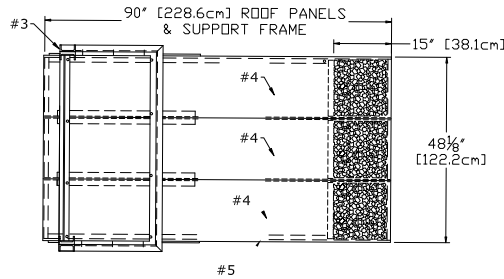
DTE - DOS CONTROL BOX CONDUIT STUB-UPS AT CANOPY

Scale: 1/2" = 1' (11x17 paper)



DTE - DOS CONTROL BOX AT CANOPY

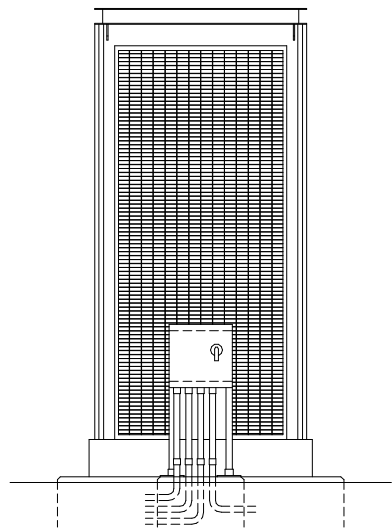
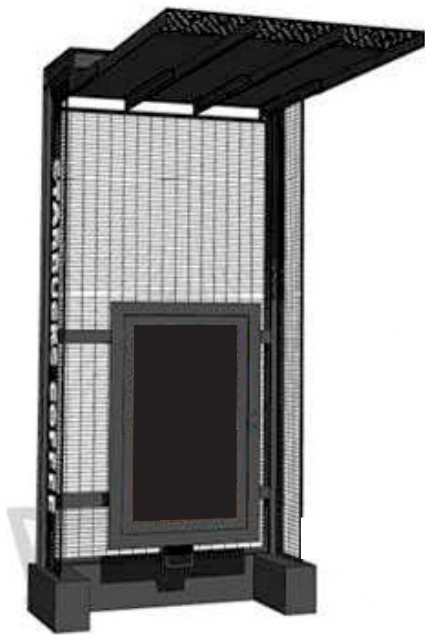
Scale: 1/2" = 1' (11x17 paper)



DTE - CANOPY

Scale: 1/4" = 1' (11x17 paper)

- #1 - TWO - 3/4" [19mm] STEEL BASE PLATES w/ OVAL HOLES FOR SWIVEL/POSITION
16 - 1/4" WASHERS SUPPLIED
#2 - TWO - BACK TO BACK C4X7.25 (4"x13/4"x5/16") STEEL POSTS
#3 - WELDED ALUMINUM HEADER, C4"x1.58" CHANNEL
#4 - THREE - ALUMINUM ROOF PANELS SEAMLESS RAISED SIDE EDGES 15" OF LASERED PATTERN W/ DRIP EDGE BEHIND
#5 - WELDED STEEL PERIMETER ROOF FRAME
#6 - WELDED 3/16" STEEL [5mm] MONITOR SUPPORT FRAME WITH HGT ADJUSTMENT
#7 - WELDED STEEL 1" [25.4mm] O-C WIRE GRID BACK & SIDE PANELS IN WELDED RECTANGULAR STEEL TUBE FRAMES
#8 - 4'15" X 1 1/2" [11.3cmX12.7mm] WHITE ACRYLIC LETTERS. FIXED TO LH GRID PANEL w/ANTI-TAMPER SCREWS
#9 - WELDED ALUMINUM BASE COVERS
#10 - WELDED ALUMINUM WATER-TIGHT ELECTRIC ENCLOSURE (REAR HATCH)
#11 - LED CEILING FLOODLIGHT, WIRED COMPLETE



HILTONDISPLAYS

125 HILLSIDE DRIVE • GREENVILLE SC 29607
P 800 353 9132 • F 864 242 2204
www.hiltondisplays.com

QID 17-39026

JOB NAME

Starbucks# 5333

LOCATION

2457 Marksheffel Road
Colorado Springs, CO

CUSTOMER CONTACT

SALESMAN / PM

Valerie Foster

DESIGNER

Chad Wike

DWG. DATE

5-9-18

REV. DATE / REVISION

10-05-18 / GTS

SCALE

As Noted

FILE

2018/Starbucks/
Colorado Springs CO/17-39026/
SB Colorado Springs CO 5333.cdr

DESIGN SPECIFICATIONS ACCEPTED BY:

EST:	CLIENT:
SLS/PM:	LANDLORD:

THE INTENT OF THIS DRAWING IS TO SHOW A CONCEPTUAL REPRESENTATION OF THE PROPOSED SIGNAGE. DUE TO VARIATIONS IN PRINTING DEVICES AND SUBSTRATES, THE FINISHED PRODUCT MAY DIFFER SLIGHTLY FROM DRAWING.

