




EL PASO COUNTY PLANNING & COMMUNITY DEVELOPMENT
SIGN APPLICATION

DATE: _____		<u>Vicinity Map</u> Tax Schedule # _____ Please show major intersections. 		<u>Sign Plan</u> (Please indicate dimensions and sign copy)	
<u>Business</u> Name: <u>Starbucks #51410</u> Address: <u>209 Cileneagle</u> <u>lake view.</u> <u>CO 80921</u> Zone: <u>6206306002</u> Legal Description: <u>Lot</u> <u>(2) Academy</u> <u>gateway sub</u> <u>fill No. 1</u>					
<u>Type of Sign</u> Illuminated: <u>yes</u> Non-Illuminated: _____ Valuation: <u>\$20,000</u>					
Storefront Length &/or Width: <u>North & South Elevations 70' long</u> <u>East & West Elevation 30' long</u> Proposed Sign Sq. Ft. <u>94.33 Sq. ft</u> <u>(A) total signs</u> Existing Sign Sq. Ft. _____		<u>Elevation Drawing</u> Indicate storefront length & placement of sign.			
Total Sign Sq. Ft. <u>94.33</u> <u>29.4 ft</u>					
<u>Contractor Information</u> Name: <u>Freeman Signs</u> Address: <u>3883 Monaco Pkwy.</u> <u>Denver, CO 80204</u> Phone: <u>303-781-0102</u> Type of License: <u>Contractors</u> Contractor ID#: <u>18256</u>				<u>For Planning & Community Development Use Only</u> Approved Date: _____ Resubmittal? Yes _____ No _____ Denied Date: _____ Comments: _____	
Fee of \$262.00 must accompany this Application. Additional signs at time of first Application are \$125.00. Make checks payable to El Paso County.					

STARBUCKS #51410
Northgate Blvd & Struthers
209 Gleneagle Gate View
Colorado Springs, CO 80921

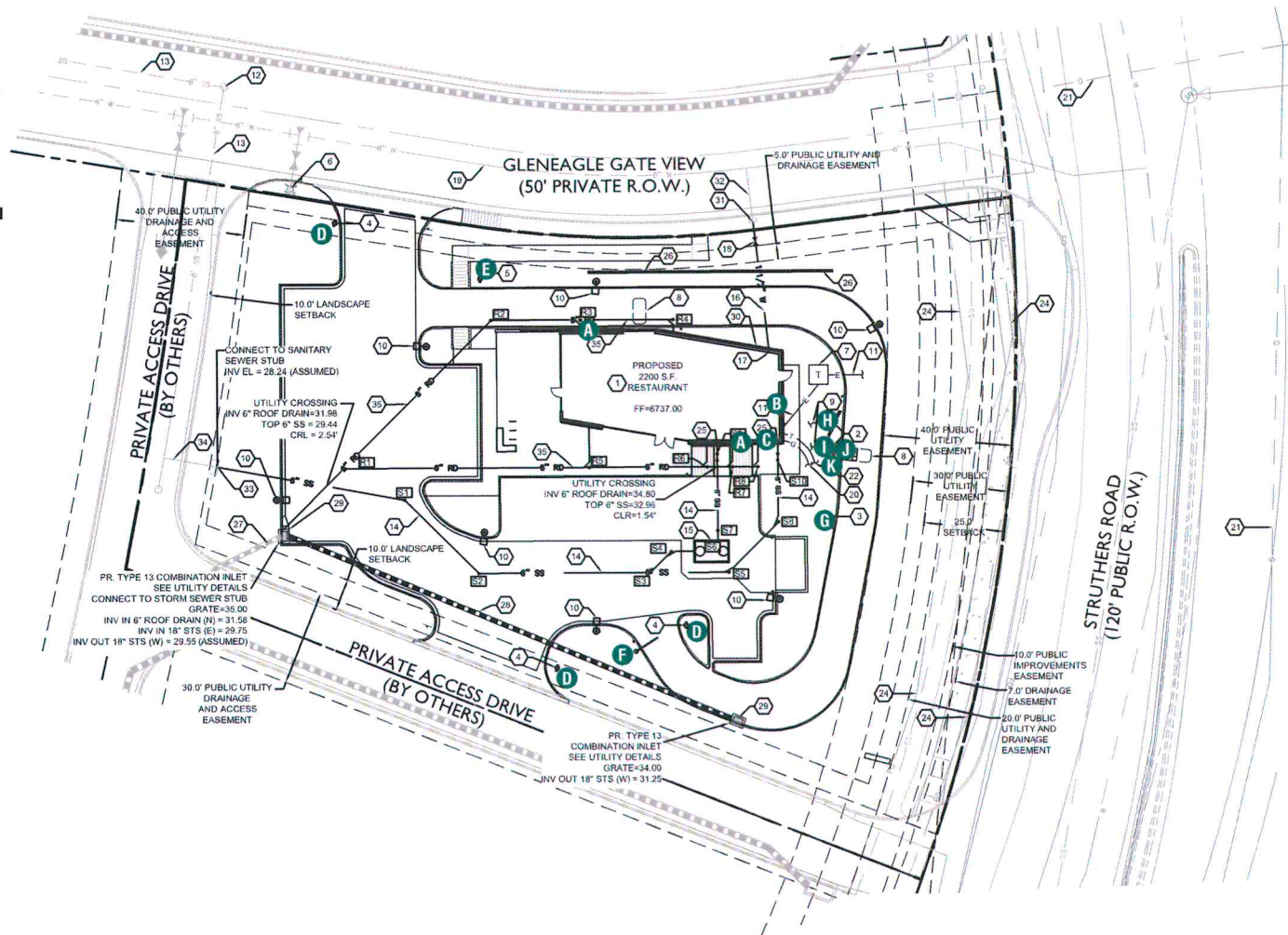


17-38415

***HILTON*DISPLAYS**

125 HILLSIDE DRIVE • GREENVILLE SC 29607
P 800 353 9132 • F 864 242 2204
www.hiltondisplays.com

- A** 71" SIREN WALL SIGN
- B** 22" CHANNEL LETTERS
- C** 48" DT WALL SIGN
- D** 46" DT DIRECTIONAL
- E** 46" TY/EO DIRECTIONAL
- F** CLEARANCE BAR
- G** PRE-MENU BOARD
- H** MENU BOARD
- I** DIGITAL ORDER SCREEN
- J** DIGITAL CONTROL BOX
- K** CANOPY



125 HILLSIDE DRIVE • GREENVILLE SC 29607
P 800 353 9132 • F 864 242 2204
www.hiltondisplays.com

JOB NAME

Starbucks #51410

LOCATION

209 Gleneagle Gate View
Colorado Springs, CO 80921

CUSTOMER CONTACT

SALESMAN / PM

Jennifer Nichols

DESIGNER

Jesse Black

DWG. DATE

08-18-17

REV. DATE / REVISION

08-23-17 CL / Notes & DT

08-24-17 CW / changes
11-07-17 JB

SCALE

As Noted

FILE

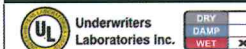
2017/Starbucks/Colorado
Springs CO/17-38415/SB
Colorado Springs.cdr

DESIGN SPECIFICATIONS ACCEPTED BY:

EST: CLIENT:

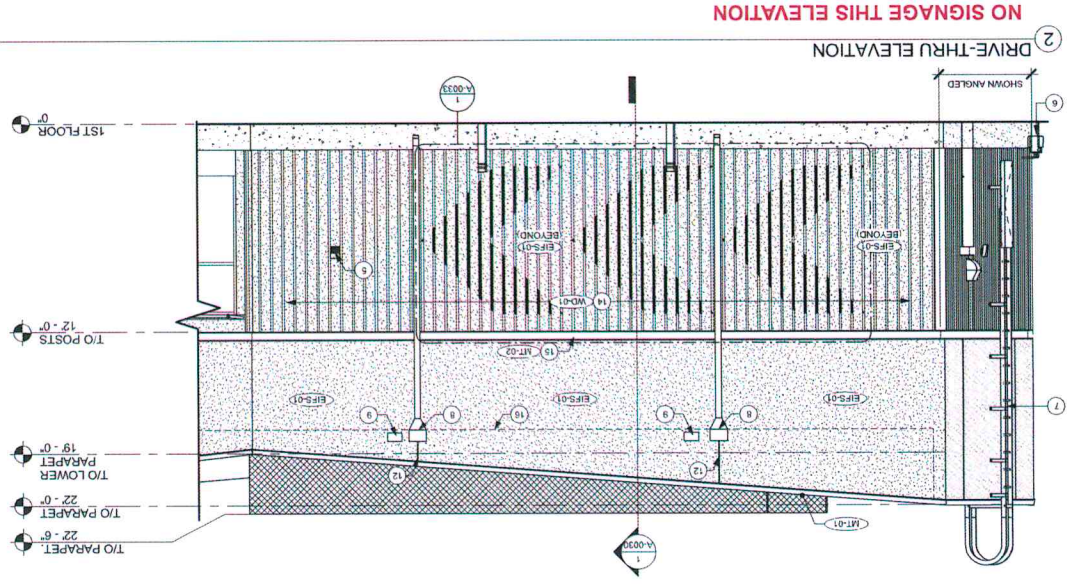
SLS/PM: LANDLORD:

THE INTENT OF THIS DRAWING IS TO SHOW A CONCEPTUAL REPRESENTATION OF THE PROPOSED SIGNAGE. DUE TO VARIATIONS IN PRINTING DEVICES AND SUBSTRATES, THE FINISHED PRODUCT MAY DIFFER SLIGHTLY FROM DRAWING.

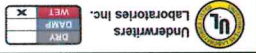


		REFL. WHITE	3M 680-10
		PMS 369 C	NA
		PMS WHITE	3M 3630-20/ 7725-10
		RAL 7021M	3M 3630-22
		PMS 3425 C	3M 3630-76
		PMS/PAINT	VINYL
COLOR LEGEND			

- ELEVATION**
- A** 71" SIREN WALL SIGN
 - B** 22" CHANNEL LETTERS
 - C** 48" DT WALL SIGN
 - D** 46" DT DIRECTIONAL
 - E** 46" TY/EO DIRECTIONAL
 - F** CLEARANCE BAR
 - G** PRE-MENU BOARD
 - H** MENU BOARD
 - I** DIGITAL ORDER SCREEN
 - J** DIGITAL CONTROL BOX
 - K** CANOPY



THIS DESIGN IS THE ORIGINAL AND UNPUBLISHED WORK OF HILTON DISPLAYS AND MAY NOT BE REPRODUCED, COPIED, OR EXHIBITED IN ANY FASHION WITHOUT WRITTEN CONSENT FROM AN AUTHORIZED OFFICER OF THE COMPANY. © HILTON DISPLAYS 2017



THE INTENT OF THIS DRAWING IS TO SHOW A CONCEPTUAL REPRESENTATION OF THE PROPOSED SIGNAGE. DUE TO VARIATIONS IN PRINTING DEVICES AND SUBSTRATES, THE FINISHED PRODUCT MAY DIFFER SLIGHTLY FROM DRAWINGS.

ST/PM: LANDLORD:

EST: CLIENT:

DESIGN SPECIFICATIONS ACCEPTED BY:

2017/Starbucks/Colorado Springs CO/17-38415/SB

FILE

As Noted

SCALE

11-07-17 JB

08-23-17 CL / Notes & DT

REV. DATE / REVISION

08-18-17

DWG. DATE

Jesse Black

DESIGNER

Jennifer Nichols

SALESMAN / PM

CUSTOMER CONTACT

209 Gleneagle Gate View

Colorado Springs, CO 80921

LOCATION

Starbucks #51410

JOB NAME

QID 17-38415

125 HILLSIDE DRIVE • GREENVILLE SC 29607

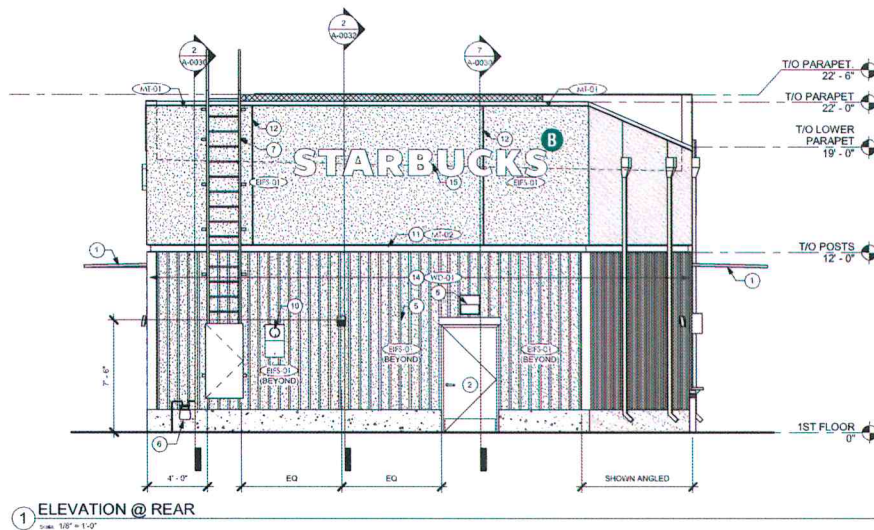
P 803 353 9132 • F 864 242 2204

www.hiltondisplays.com

HILTON DISPLAYS

ELEVATION

- A** 71" SIREN WALL SIGN
- B** 22" CHANNEL LETTERS
- C** 48" DT WALL SIGN
- D** 46" DT DIRECTIONAL
- E** 46" TY/EO DIRECTIONAL
- F** CLEARANCE BAR
- G** PRE-MENU BOARD
- H** MENU BOARD
- I** DIGITAL ORDER SCREEN
- J** DIGITAL CONTROL BOX
- K** CANOPY



① ELEVATION @ REAR
Scale: 1/8" = 1'-0"

COLOR LEGEND			
	PMS/PANT	VINYL	
	PMS 3425 C	3M 3630-76	
	RAL 7021M	3M 3630-22	
	PMS WHITE	3M 3630-20/ 7725-10	TRANSLUCENT
	PMS 369 C	NA	
	REFL. WHITE	3M 680-10	

HILTON DISPLAYS
125 HILLSIDE DRIVE • GREENVILLE SC 29607
P 800 353 9132 • F 864 242 2204
www.hiltondisplays.com

QID 17-38415

JOB NAME

Starbucks #51410

LOCATION

209 Gleneagle Gate View
Colorado Springs, CO 80921

CUSTOMER CONTACT

SALESMAN / PM

Jennifer Nichols

DESIGNER

Jesse Black

DWG. DATE

08-18-17

REV. DATE / REVISION

08-23-17 CL / Notes & DT

08-24-17 CW / changes

11-07-17 JB

SCALE

As Noted

FILE

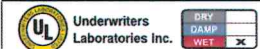
2017/Starbucks/Colorado
Springs CO/17-38415/SB
Colorado Springs.cdr

DESIGN SPECIFICATIONS ACCEPTED BY:

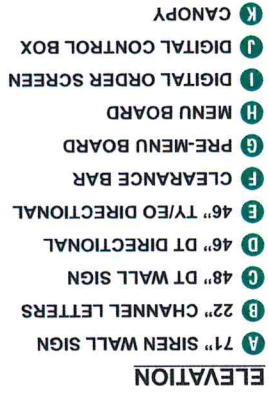
EST: CLIENT:


SLS/PM: LANDLORD:

THE INTENT OF THIS DRAWING IS TO SHOW A CONCEPTUAL REPRESENTATION OF THE PROPOSED SIGNAGE. DUE TO VARIATIONS IN PRINTING DEVICES AND SUBSTRATES, THE FINISHED PRODUCT MAY DIFFER SLIGHTLY FROM DRAWING.



THIS DESIGN IS THE ORIGINAL AND UNPUBLISHED WORK OF HILTON DISPLAYS AND MAY NOT BE REPRODUCED, COPIED, OR EXHIBITED IN ANY FASHION WITHOUT WRITTEN CONSENT FROM AN AUTHORIZED OFFICER OF THE COMPANY. © HILTON DISPLAYS 2017

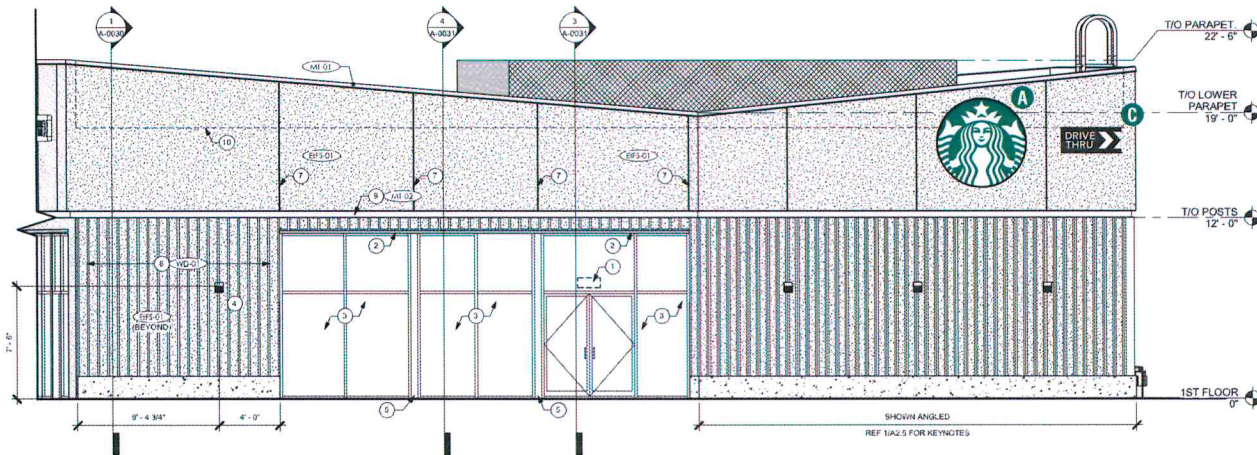



 Underwriters Laboratories Inc.

WET	X
DAMP	
DRY	

ELEVATION

- A** 71" SIREN WALL SIGN
- B** 22" CHANNEL LETTERS
- C** 48" DT WALL SIGN
- D** 46" DT DIRECTIONAL
- E** 46" TY/EO DIRECTIONAL
- F** CLEARANCE BAR
- G** PRE-MENU BOARD
- H** MENU BOARD
- I** DIGITAL ORDER SCREEN
- J** DIGITAL CONTROL BOX
- K** CANOPY



① ELEVATION @ STOREFRONT
Scale: 1/8" = 1'

COLOR LEGEND	
PMS/PAINT	VINYL
PMS 3425 C	3M 3630-76
RAL 7021M	3M 3630-22
PMS WHITE	3M 3630-20/ 7725-10 TRANSLUCENT OPACQUE
PMS 369 C	NA
REFL. WHITE	3M 680-10

HILTONDISPLAYS
125 HILLSIDE DRIVE • GREENVILLE SC 29607
P 800 353 9132 • F 864 242 2204
www.hiltondisplays.com

QID 17-38415

JOB NAME

Starbucks #51410

LOCATION

209 Gleneagle Gate View
Colorado Springs, CO 80921

CUSTOMER CONTACT

SALESMAN / PM

Jennifer Nichols

DESIGNER

Jesse Black

DWG. DATE

08-18-17

REV. DATE / REVISION

08-23-17 CL / Notes & DT
08-24-17 CW / changes
11-07-17 JB

SCALE

As Noted

FILE

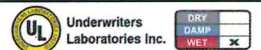
2017/Starbucks/Colorado
Springs CO/17-38415/SB
Colorado Springs.cdr

DESIGN SPECIFICATIONS ACCEPTED BY:

EST: CLIENT:

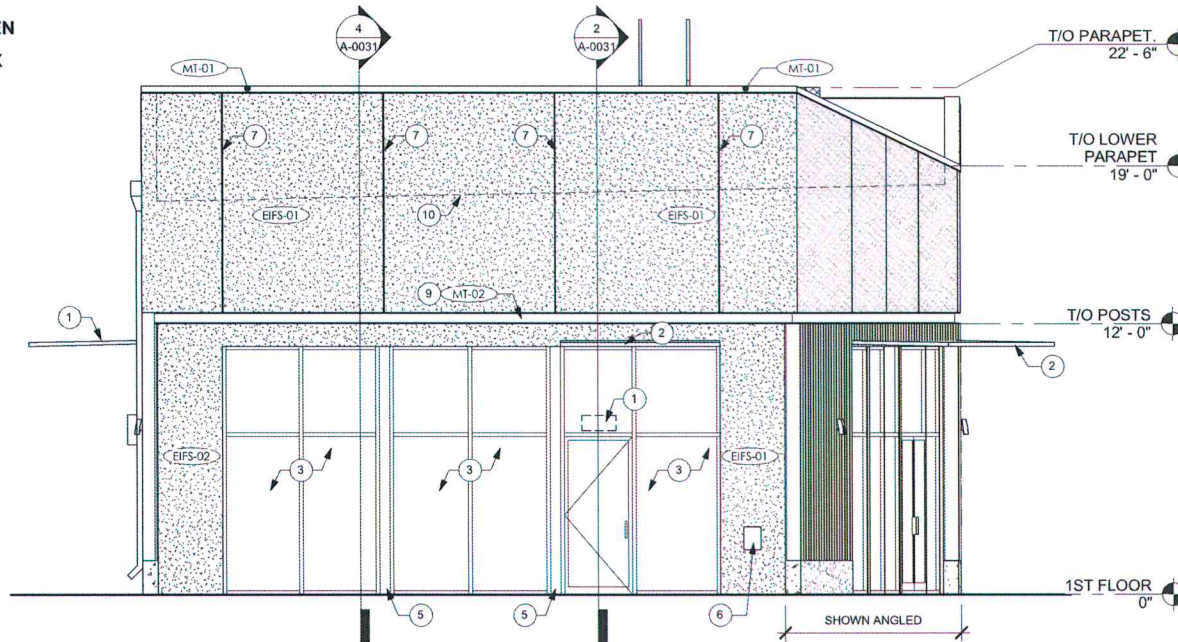
SLS/PM: LANDLORD:

THE INTENT OF THIS DRAWING IS TO SHOW A CONCEPTUAL REPRESENTATION OF THE PROPOSED SIGNAGE. DUE TO VARIATIONS IN PRINTING DEVICES AND SUBSTRATES, THE FINISHED PRODUCT MAY DIFFER SLIGHTLY FROM DRAWING.



ELEVATION

- A** 71" SIREN WALL SIGN
- B** 22" CHANNEL LETTERS
- C** 48" DT WALL SIGN
- D** 46" DT DIRECTIONAL
- E** 46" TY/EO DIRECTIONAL
- F** CLEARANCE BAR
- G** PRE-MENU BOARD
- H** MENU BOARD
- I** DIGITAL ORDER SCREEN
- J** DIGITAL CONTROL BOX
- K** CANOPY



ELEVATION @ ENTRY

Scale: 3/16" = 1'

NO SIGNS ON THIS ELEVATION

COLOR LEGEND	
PMS/Paint	VINYL
PMS 3425 C	3M 3630-76
RAL 7021M	3M 3630-22
PMS WHITE	3M 3630-20/ 7725-10 TRANSLUCENT OPAQUE
PMS 369 C	NA
REFL. WHITE	3M 680-10

HILTONDISPLAYS
125 HILLSIDE DRIVE • GREENVILLE SC 29607
P 800 353 9132 • F 864 242 2204
www.hiltondisplays.com

QID 17-38415

JOB NAME

Starbucks #51410

LOCATION

209 Gleneagle Gate View
Colorado Springs, CO 80921

CUSTOMER CONTACT

SALESMAN / PM

Jennifer Nichols

DESIGNER

Jesse Black

DWG. DATE

08-18-17

REV. DATE / REVISION

08-23-17 CL / Notes & DT

08-24-17 CW / changes

11-07-17 JB

SCALE

As Noted

FILE

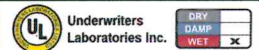
2017/Starbucks/Colorado
Springs CO/17-38415/SB
Colorado Springs.cdr

DESIGN SPECIFICATIONS ACCEPTED BY:

EST: CLIENT:

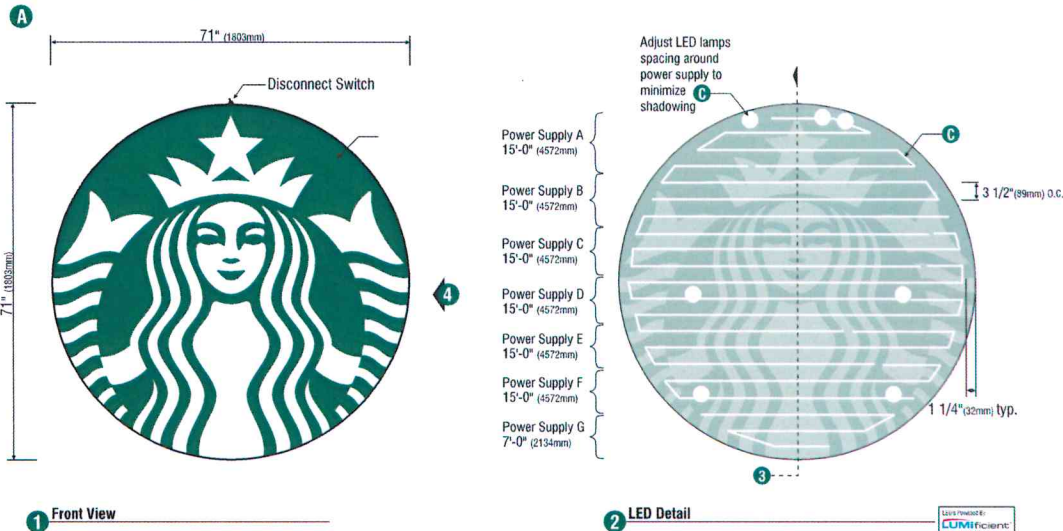
SLS/PM: LANDLORD:

THE INTENT OF THIS DRAWING IS TO SHOW A CONCEPTUAL REPRESENTATION OF THE PROPOSED SIGNAGE. DUE TO VARIATIONS IN PRINTING DEVICES AND SUBSTRATES, THE FINISHED PRODUCT MAY DIFFER SLIGHTLY FROM DRAWING.



71" ILLUMINATED SIREN

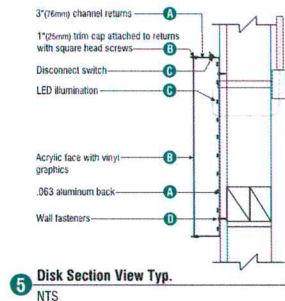
Qty. 2 SBC S13182



SPECIFICATIONS:

- A Single faced internally illuminated wall mount logo disk. Cabinet to be 3" (76mm) deep, fabricated aluminum sidewalls and back. Paint cabinet black polyurethane. Faces to be 3/16" (5mm) White acrylic. 1" black trimcap with square head screws retainer edging.
- B Graphics of logo to be 1st surface 3M Translucent Scotchcal vinyl- Holly Green #3630-76. Siren to show thru White.
- C Internally illuminate logo disk with Lumificient™ white LED's installed to back of disk. Power with self-contained Lumificient™ power supply enclosed in painted white j-box. Fasten to wall with required fasteners.

Disk 71in (1803mm) S/F Illuminated Flush Mounted Wall Sign EVOLVED			
Size	Sq. Ft.	Sq. M.	Volts
71" (1803mm)	35.0	3.25	120



COLOR LEGEND	
PMS/Paint	VINYL
PMS 3425 C	3M 3630-76
RAL 7021M	3M 3630-22
PMS WHITE	3M 3630-20/ 7725-10 TRANSLUCENT OPAQUE
PMS 369 C	NA
REFL. WHITE	3M 680-10

HILTON DISPLAYS
125 HILLSIDE DRIVE • GREENVILLE SC 29607
P 800 353 9112 • F 864 242 2204
www.hiltondisplays.com

QID 17-38415

JOB NAME

Starbucks #51410

LOCATION

**209 Gleneagle Gate View
Colorado Springs, CO 80921**

CUSTOMER CONTACT

SALESMAN / PM

Jennifer Nichols

DESIGNER

Jesse Black

DWG. DATE

08-18-17

REV. DATE / REVISION

08-23-17 CL / Notes & DT

08-24-17 CW / changes

11-07-17 JB

SCALE

As Noted

FILE

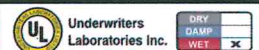
**2017/Starbucks/Colorado
Springs CO/17-38415/SB
Colorado Springs.cdr**

DESIGN SPECIFICATIONS ACCEPTED BY:

EST: CLIENT:

SLS/PM: LANDLORD:

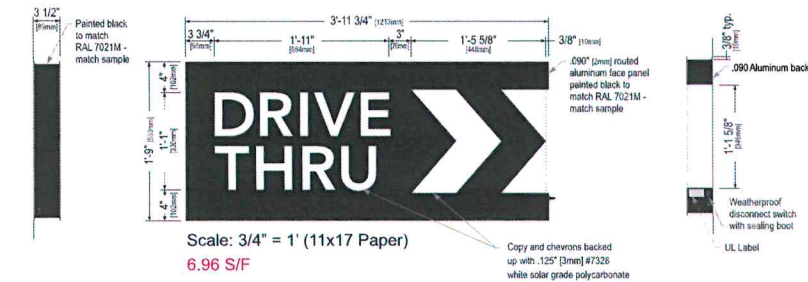
THE INTENT OF THIS DRAWING IS TO SHOW A CONCEPTUAL REPRESENTATION OF THE PROPOSED SIGNAGE. DUE TO VARIATIONS IN PRINTING DEVICES AND SUBSTRATES, THE FINISHED PRODUCT MAY DIFFER SLIGHTLY FROM DRAWING.



48" DT WALL SIGN

Qty. 1 SBC S14099

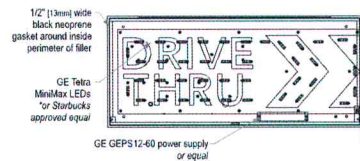
C



Left Side View

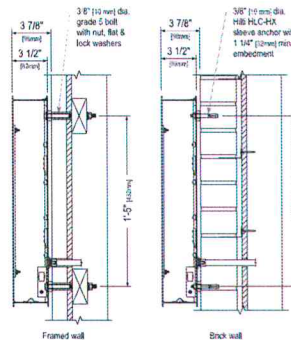
Front Elevation View

Right Side View



Vertical Cross-Section View, Typ.

Service Position View



Section View at Installation Detail

COLOR LEGEND			
PMS/PANT	VINYL		
PMS 3425 C	3M 3630-76		
RAL 7021M	3M 3630-22		
PMS WHITE	3M 3630-20/ 7725-10	TRANSLUCENT	OPAQUE
PMS 369 C	NA		
REFL. WHITE	3M 680-10		

Sign Specifications:

Cabinet:

- Fabricated .090" (2mm) aluminum housing painted black to match RAL 7021M with 3M #180-10 white vinyl end cap as shown.
- Directional copy and chevrons backed up with .125" white polycarb. All polycarb face elements to be attached to aluminum face panel with weld studs.
- Welded aluminum construction with no visible fasteners. Fasteners retaining the hinged face will be located on the bottom such that they are not visible. All fasteners used in the assembly of internal components shall be coated to prevent corrosion.
- Internal structure of cabinet shall be per approved shop drawings.
- Graphic elements are internally illuminated using GE Tetra MiniMax LED system or Starbucks approved equal. LED's to be mounted on back panel with self-contained power supply. All electrical components are removable for service.

Regulatory:

- Sign must meet all regulations in the National Electric Code as well as any local or state electrical codes.
- As per NEC 600.6, sign is equipped with a service disconnect switch.
- Sign must be listed as an Electric Sign per Underwriters Laboratories UL48 and/or CSA and bear the appropriate UL, CUL or CSA relevant certification marks.
- Primary power by electrical contractor per NEC.

Size	Sq. Ft. ¹	Sq. Ft. ²	Volts	Amps
21"	4.52	6.96	120	0.85

1: Figured as illuminated center part
2: Figured as complete signage

HILTONDISPLAYS
125 HILLSIDE DRIVE • GREENVILLE SC 29607
P 800 353 9132 • F 864 242 2204
www.hiltondisplays.com

QID 17-38415

JOB NAME

Starbucks #51410

LOCATION

**209 Gleneagle Gate View
Colorado Springs, CO 80921**

CUSTOMER CONTACT

SALESMAN / PM

Jennifer Nichols

DESIGNER

Jesse Black

DWG. DATE

08-18-17

REV. DATE / REVISION

08-23-17 CL / Notes & DT

08-24-17 CW / changes

11-07-17 JB

SCALE

As Noted

FILE

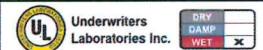
**2017/Starbucks/Colorado
Springs CO/17-38415/SB
Colorado Springs.cdr**

DESIGN SPECIFICATIONS ACCEPTED BY:

EST: CLIENT:

SLS/PM: LANDLORD:

THE INTENT OF THIS DRAWING IS TO SHOW A CONCEPTUAL REPRESENTATION OF THE PROPOSED SIGNAGE. DUE TO VARIATIONS IN PRINTING DEVICES AND SUBSTRATES, THE FINISHED PRODUCT MAY DIFFER SLIGHTLY FROM DRAWING.

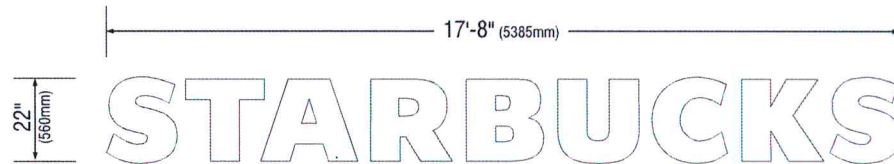


22" CHANNEL LETTERS - REMOTE

SBC-S13293-SB-W

Qty. 1

8

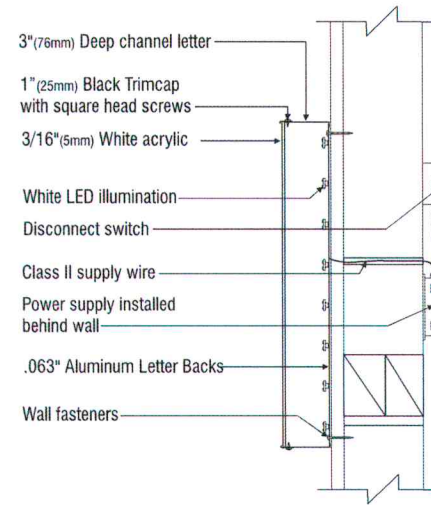


1 Front View

Scale: 3/8" = 1' (11x17 Paper)

SPECIFICATIONS

- A** Internally illuminated channel letters to be fabricated from .040/3003 aluminum with pre-painted White interiors and painted satin finish Black polyurethane exteriors. Letter backs to be aluminum pop-riveted to sidewalls and sealed.
- B** Faces to be 3/16" (5mm) White acrylic with 1" (25mm) Black trimcap retainer edging.
- C** Letters illuminated w/ "Lumificient LED's w/ remote power supply.
- D** Letters to be installed flush to wall.



COLOR LEGEND			
PMS/Paint	VINYL		
PMS 3425 C	3M 3630-76		
RAL 7021M	3M 3630-22		
PMS WHITE	3M 3630-20/ 7725-10	TRANSLUCENT	OPAQUE
PMS 369 C	NA		
REFL. WHITE	3M 680-10		

HILTON DISPLAYS
125 HILLSIDE DRIVE • GREENVILLE SC 29607
P 800 353 9132 • F 864 242 2204
www.hiltondisplays.com

QID 17-38415

JOB NAME

Starbucks #51410

LOCATION

209 Gleneagle Gate View
Colorado Springs, CO 80921

CUSTOMER CONTACT

SALESMAN / PM

Jennifer Nichols

DESIGNER

Jesse Black

DWG. DATE

08-18-17

REV. DATE / REVISION

08-23-17 CL / Notes & DT

08-24-17 CW / changes

11-07-17 JB

SCALE

As Noted

FILE

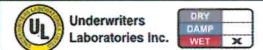
2017/Starbucks/Colorado
Springs CO/17-38415/SB
Colorado Springs.cdr

DESIGN SPECIFICATIONS ACCEPTED BY:

EST: CLIENT:

SLS/PM: LANDLORD:

THE INTENT OF THIS DRAWING IS TO SHOW A CONCEPTUAL REPRESENTATION OF THE PROPOSED SIGNAGE. DUE TO VARIATIONS IN PRINTING DEVICES AND SUBSTRATES, THE FINISHED PRODUCT MAY DIFFER SLIGHTLY FROM DRAWING.

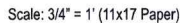


Qty. 3 **SBC-S14104-DT**

Qty. 3

D

6" [152mm] halo-lit logo is first surface vinyl film to match PMS 3425 on 3/8" clear polycarb for push-thru

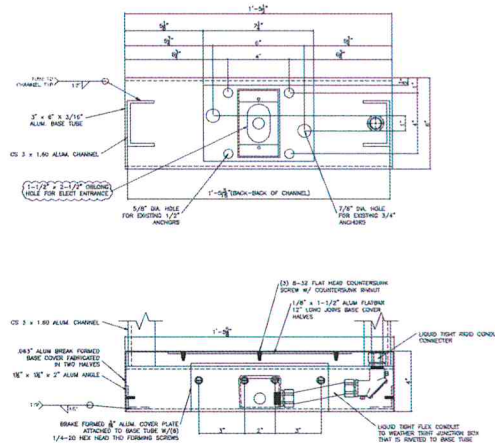
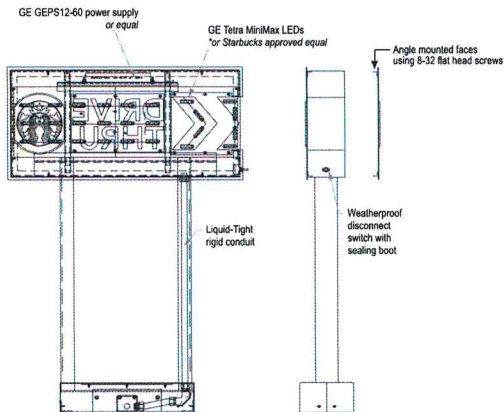


Street Side View

Front Elevation View

Store Side View

Rear Elevation View



COLOR LEGEND		
	PMS/PAINT	VINYL
	PMS 3425 C	3M 3630-76
	RAL 7021M	3M 3630-22
	PMS WHITE	3M 3630-20/ 7725-10 TRANSLUCENT OPAQUE
	PMS 369 C	NA
	REFL. WHITE	3M 680-10

Sign Specifications:

Cabinet:

- Fabricated .090" [2mm] aluminum housing painted black to match RAL 7021 with white end cap as shown.
- Directional copy and chevrons backed up with 1/8" White polycarb. Siren logo is 6" [152mm] diameter, 3/8" clear polycarb routed to push thru aluminum face. Decorate logo with 1st surface computer cut vinyl film to match PMS 3425. Edges of push thru logo are to be polished. All acrylic face elements to be attached to aluminum face panel with weld studs.
- Interior aluminum surfaces of sign cabinet to be painted white with Lacryl Starbrite.
- Internal structure of cabinet shall be per approved shop drawings.
- Graphic elements are internally illuminated using GE Tetra MiniMax LED system or *Starbucks approved equal*. LED's to be mounted on an internal baffle with self-contained power supply. All electrical components are removable for service.

Support:

- Supporting structure will be all welded aluminum tube and channel construction painted black to match RAL 7021 as per approved shop drawings and shall be integral to the sign cabinet.
- Base tube will be constructed so that it can be retro-fittable to existing sign foundations. All foundations, existing and new must be analyzed for suitability and must meet all local city or state codes regulations.

Size	Sq. Ft. ¹	Sq. Ft. ²	Volts	Amps
46" (1168mm)	3.23	9.90	120	0.85

HILTONDISPLAYS

125 HILLSIDE DRIVE • GREENVILLE SC 29607
P 800 353 9132 • F 864 242 2204
www.hiltondisplays.com

QID 17-38415

JOB NAME

Starbucks #51410

LOCATION

209 Gleneagle Gate View
Colorado Springs, CO 80921

CUSTOMER CONTACT

SALESMAN / PM

Jennifer Nichols

DESIGNER

Jesse Black

DWG. DATE

08-18-17

REV. DATE / REVISION

08-23-17 CL / Notes & DT

08-24-17 CW / changes

11-07-17 JB

SCALE

As Noted

FILE

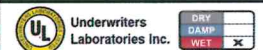
2017/Starbucks/Colorado
Springs CO/17-38415/SB
Colorado Springs.cdr

DESIGN SPECIFICATIONS ACCEPTED BY:

EST:	CLIENT:
------	---------

SLS/PM:	LANDLORD:
---------	-----------

THE INTENT OF THIS DRAWING IS TO SHOW A CONCEPTUAL REPRESENTATION OF THE PROPOSED SIGNAGE. DUE TO VARIATIONS IN PRINTING DEVICES AND SUBSTRATES, THE FINISHED PRODUCT MAY DIFFER SLIGHTLY FROM DRAWING.



46" ILLUMINATED DIRECTIONAL TYEO

SBC-S14091

Qty. 1

E

Sign Specifications:

Cabinet:

- Fabricated .090" [2mm] aluminum housing painted black to match RAL 7021M.
- Areas using black paint to match RAL 7021M shall have a max 20% gloss level, match sample.
- Directional copy backed up with .125" [3mm] white solar grade polycarbonate matching R&H #7328.
- Interior aluminum surfaces of sign cabinet to be painted white with Lacryl Starbrite.
- Welded aluminum construction. All fasteners used in the assembly of internal components shall be coated to prevent corrosion.
- Internal structure of cabinet shall be per approved shop drawings.
- Graphic elements are internally illuminated using GE Tetra MiniMax LED system or Starbucks approved equal. LED's to be mounted on an internal baffle with self-contained power supply. All electrical components are removable for service.

Support:

- Supporting structure will be all welded aluminum tube and channel construction painted black to match RAL 7021M as per approved shop drawings and shall be integral to the sign cabinet.
- Areas using black paint to match RAL 7021M shall have a max 20% gloss level, match sample.
- Base will be constructed so that it can be retro-fittable to existing sign foundations. All foundations, existing and new must be analyzed for suitability and must meet all local city or state codes regulations.

Regulatory:

- Sign must meet all regulations in the National Electric Code as well as any local or state electrical codes.
- As per NEC 600.6, sign is equipped with a service disconnect switch.
- Sign must be listed as an Electric Sign per Underwriters Laboratories UL48 and/or CSA and bear the appropriate UL, CUL or CSA relevant certification marks.
- Primary power by electrical contractor per NEC.

Size	Sq. Ft. ¹	Sq. Ft. ²	Volts	Amps
46" (1168mm)	2.60	7.99	120	0.85

HILTONDISPLAYS

125 HILLSIDE DRIVE • GREENVILLE SC 29607
P 800 353 9132 • F 864 242 2204
www.hiltondisplays.com

QID 17-38415

JOB NAME

Starbucks #51410

LOCATION

209 Gleneagle Gate View
Colorado Springs, CO 80921

CUSTOMER CONTACT

SALESMAN / PM

Jennifer Nichols

DESIGNER

Jesse Black

DWG. DATE

08-18-17

REV. DATE / REVISION

08-23-17 CL / Notes & DT

08-24-17 CW / changes

11-07-17 JB

SCALE

As Noted

FILE

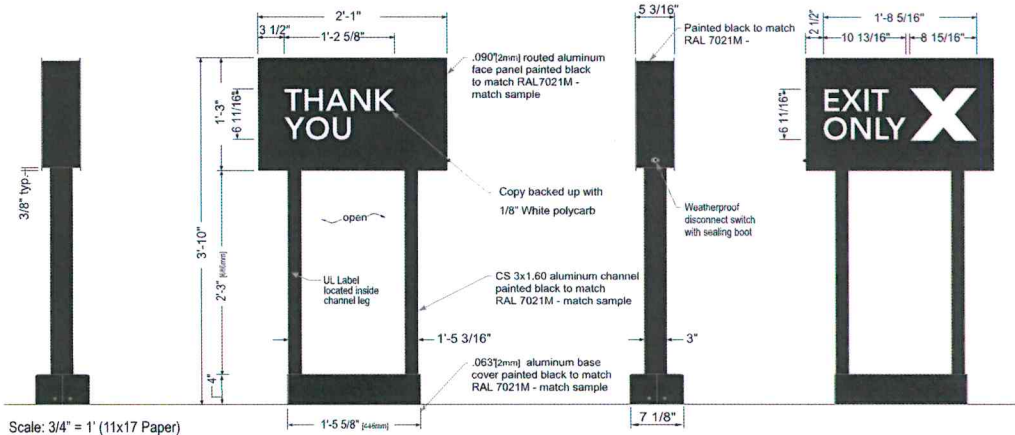
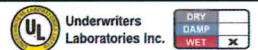
2017/Starbucks/Colorado
Springs CO/17-38415/SB
Colorado Springs.cdr

DESIGN SPECIFICATIONS ACCEPTED BY:

EST: CLIENT:

SLS/PM: LANDLORD:

THE INTENT OF THIS DRAWING IS TO SHOW A CONCEPTUAL REPRESENTATION OF THE PROPOSED SIGNAGE. DUE TO VARIATIONS IN PRINTING DEVICES AND SUBSTRATES, THE FINISHED PRODUCT MAY DIFFER SLIGHTLY FROM DRAWING.

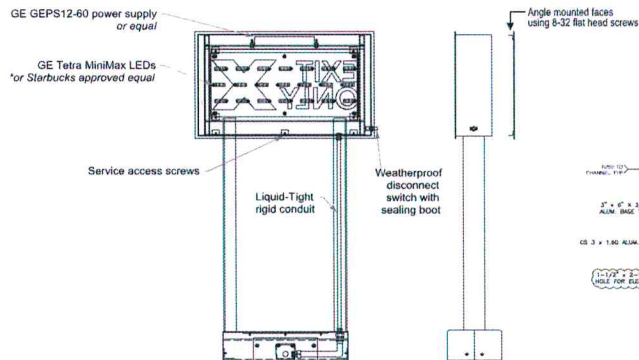


Street Side View

Front Elevation View

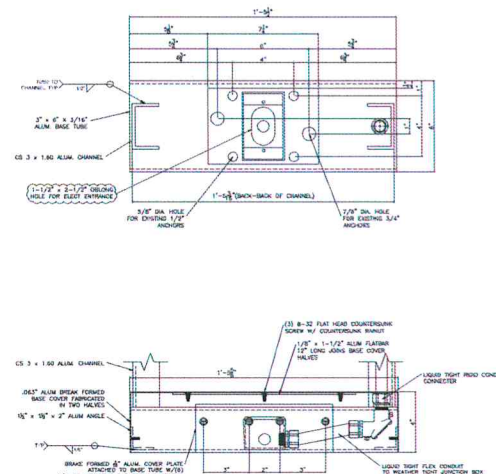
Store Side View

Rear Elevation View



Vertical Cross-Section View, Typ.

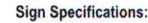
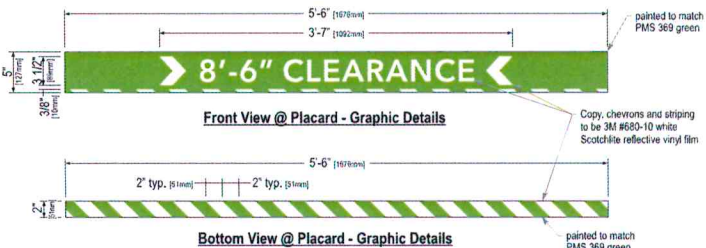
Service Position View



COLOR LEGEND	
PMS/PANT	VINYL
PMS 3425 C	3M 3630-76
RAL 7021M	3M 3630-22
PMS WHITE	3M 3630-20/ 7725-10 TRANSLUCENT
PMS 369 C	NA
REFL. WHITE	3M 680-10

Qty. 1
(Standard Wind Load)

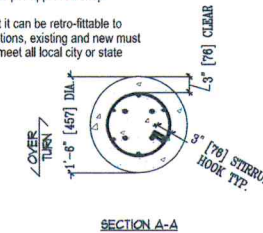
(Standard Wind Load)



- 2"x5" [51mm x 127mm] steel tube painted to match PMS 369 green.
- Flush steel end caps painted to match PMS 369 green.
- Copy and chevrons to be 1st surface computer cut 3M #680-10 white Scotchite reflective vinyl film.
- Bottom striping to be 1st surface computer cut 3M #680-10 white Scotchite reflective vinyl film. Striping extends 3/8" [10mm] onto front face.
- Suspend from support with SS cable & hardware. Cable provided requires field adjustment for proper clearance height.

- Supporting structure will be all welded steel tube construction painted black to match RAL 7021M as per approved shop drawings.
- Base tube will be constructed so that it can be retro-fittable to existing sign foundations. All foundations, existing and new must be analyzed for suitability and must meet all local city or state codes regulations.

2.29



3/8" THICK STEEL MOUNTING TAB (4 REQ'D)

3/4" DIA. HOLE

1 1/2" [38]

3/4" [19]

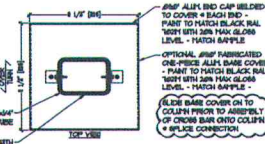
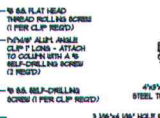
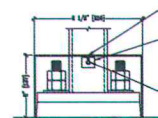
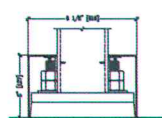
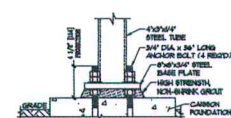
3/4" [19]


1 1/8" [30]

3/8" [10]

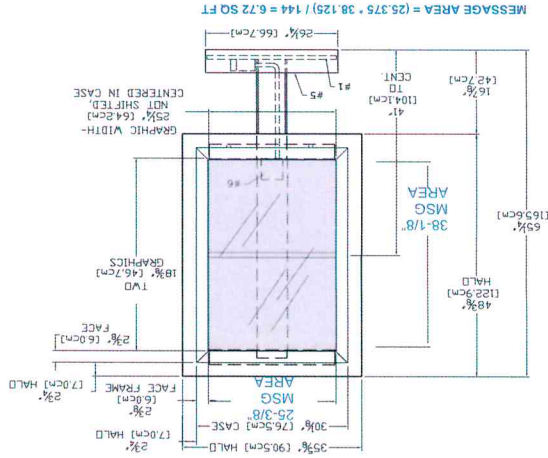
3/8" [10]

PLACARD MOUNTING TAB DETAIL

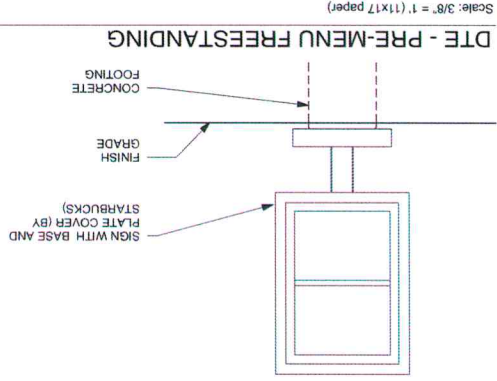


 **Underwriters
Laboratories Inc.**

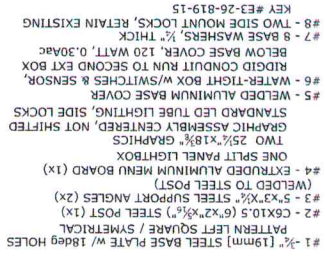
DRY	<input type="checkbox"/>
DAMP	<input type="checkbox"/>
WET	<input checked="" type="checkbox"/>



Scale: $1/2'' = 1'$ (11x17 paper)



Scale: $3/8" = 1'$ (11x17 paper)

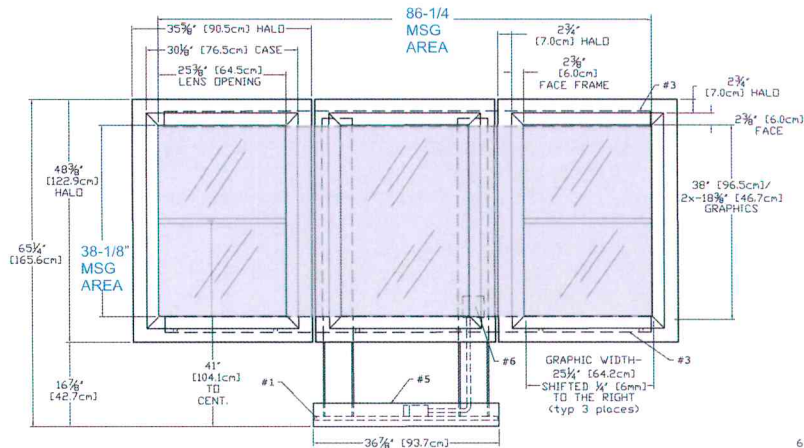
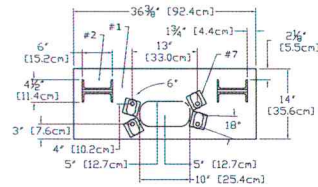
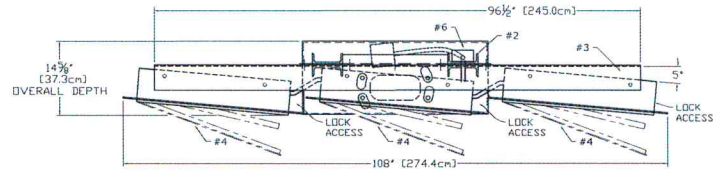


THIS DESIGN IS THE ORIGINAL AND UNPUBLISHED WORK OF HILTON DISPLAYS AND MAY NOT BE REPRODUCED, COPIED OR EXHIBITED IN ANY FASHION WITHOUT WRITTEN CONSENT FROM AN AUTHORIZED OFFICER OF THE COMPANY. © HILTON DISPLAYS 2011

5-PANEL MENU - FREESTANDING

Qty. 1

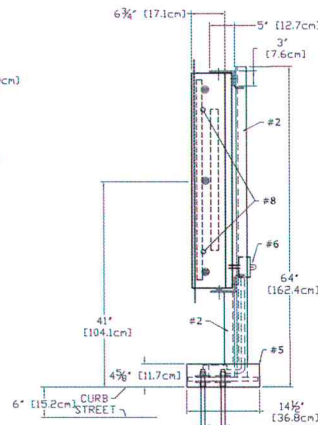
H



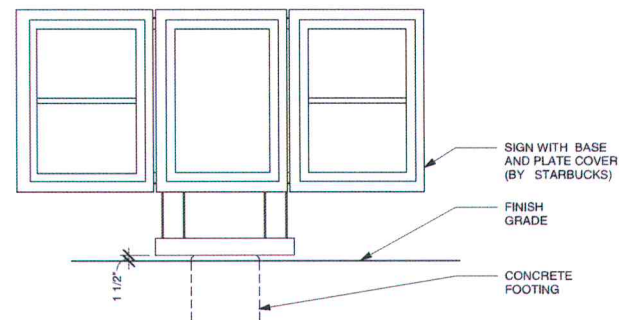
MESSAGE AREA = (86.25 * 38.125) / 144 = 22.9 SQ FT

DTE - MENU 5 PANEL FREESTANDING

Scale: 1/2" = 1' (11x17 paper)



- #1 - 3/4" (19mm) STEEL BASE PLATE w/ 18deg HOLES PATTERN ROTATED FOR 15deg THRU 3deg POSITION
- #2 - C6X10.5 (6"x2"x3/4") STEEL POST (2x)
- #3 - 5"x3"x1/2" STEEL SUPPORT ANGLES (2x) (BOLTED TO WELDED 1/4" STEEL CROSSBARS)
- #4 - EXTRUDED ALUMINUM MENU BOARDS (3x) ONE FULL AND TWO SPLIT PANEL LIGHTBOXES ONE - 25 1/2"x38" AND FOUR 25 1/2"x18 3/8" GRAPHICS ALL GRAPHIC ASSEMBLIES SHIFTED 1/4" TO RIGHT STANDARD LED TUBE LIGHTING, SIDE LOCKS
- #5 - WELDED ALUMINUM BASE COVER
- #6 - WATER-TIGHT BOX w/SWITCH & SENSOR, RIDGID CONDUIT RUN TO SECOND EXT BOX BELOW BASE COVER, 120 WATT, 0.90Aac
- #7 - 8 BASE WASHERS, 1/2" THICK
- #8 - TWO SIDE MOUNT LOCKS per MENUBOARD RETAIN EXISTING KEY #E3-26-819-15



DTE - MENU 5 PANEL FREESTANDING

Scale: 3/8" = 1' (11x17 paper)

HILTONDISPLAYS
125 HILLSIDE DRIVE • GREENVILLE SC 29607
P 800 353 9132 • F 864 242 2204
www.hiltondisplays.com

QID 17-38415

JOB NAME

Starbucks #51410

LOCATION

209 Gleneagle Gate View
Colorado Springs, CO 80921

CUSTOMER CONTACT

SALESMAN / PM

Jennifer Nichols

DESIGNER

Jesse Black

DWG. DATE

08-18-17

REV. DATE / REVISION

08-23-17 CL / Notes & DT

08-24-17 CW / changes

11-07-17 JB

SCALE

As Noted

FILE

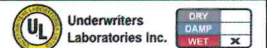
2017/Starbucks/Colorado
Springs CO/17-38415/SB
Colorado Springs.cdr

DESIGN SPECIFICATIONS ACCEPTED BY:

EST: CLIENT:

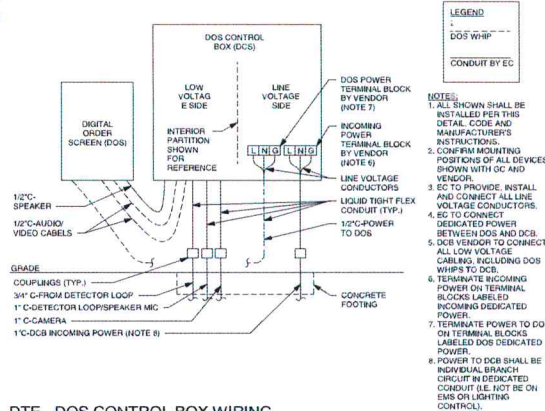
SLS/PM: LANDLORD:

THE INTENT OF THIS DRAWING IS TO SHOW A CONCEPTUAL REPRESENTATION OF THE PROPOSED SIGNAGE. DUE TO VARIATIONS IN PRINTING DEVICES AND SUBSTRATES, THE FINISHED PRODUCT MAY DIFFER SLIGHTLY FROM DRAWING.



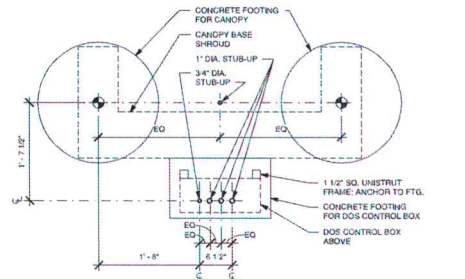
DOS ON CANOPY - DCB ON UNISTRUT

Qty. 1



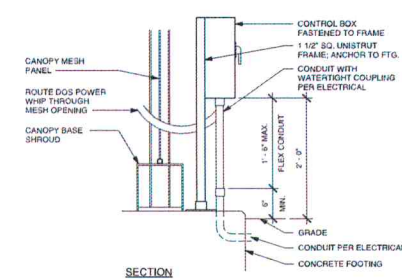
DTE - DOS CONTROL BOX WIRING

Scale: 1/2" = 1' (11x17 paper)



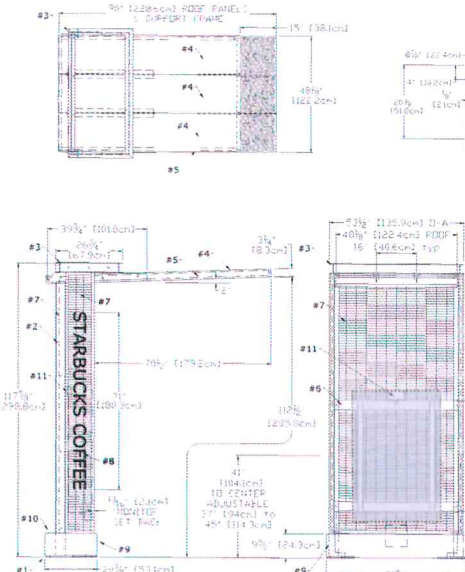
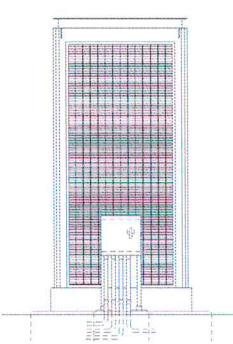
DTE - DOS CONTROL BOX CONDUIT STUB-UPS AT CANOPY

Scale: 1/2" = 1' (11x17 paper)



DTE - DOS CONTROL BOX AT CANOPY

Scale: 1/2" = 1' (11x17 paper)



DTE - CANOPY

Scale: 1/4" = 1' (11x17 paper)

- #1 - TWO - 2" [51mm] STEEL BASE PLATES w/ OVAL HOLES FOR SWIVEL/POSITION
- #2 - TWO - BACK TO BACK C4X1.25 (4"x1 1/2"x4 1/4") STEEL POSTS
- #3 - WELDED ALUMINUM HEADER, C4X1.58" CHANNEL
- #4 - THREE - ALUMINUM ROOF PANELS SEAMLESS RAISED SIDE EDGES 15" OF LASERED PATTERN W/ DRIP EDGE BEHIND
- #5 - WELDED STEEL PERIMETER ROOF FRAME
- #6 - WELDED 3/4" STEEL (5mm) MONITOR SUPPORT FRAME WITH HGT ADJUSTMENT
- #7 - WELDED STEEL 1" (25.4mm) O-C WIRE GRID BACK & SIDE PANELS IN WELDED RECTANGULAR STEEL TUBE FRAMES
- #8 - 4'x4'x1/2" (11.3mmx12.7mm) WHITE ACRYLIC LETTERS, FIXED TO LH GRID PANEL w/ANTI-TAMPER SCREWS
- #9 - WELDED ALUMINUM BASE COVERS
- #10 - WELDED ALUMINUM WATER-TIGHT ELECTRIC ENCLOSURE (REAR HATCH)
- #11 - LED CEILING FLOODLIGHT, WIRED COMPLETE

HILTON DISPLAYS
 125 HILLSIDE DRIVE • GREENVILLE SC 29607
 P 800 353 9132 • F 864 242 2204
 www.hiltondisplays.com

QID 17-38415

JOB NAME

Starbucks #51410

LOCATION

**209 Gleneagle Gate View
 Colorado Springs, CO 80921**

CUSTOMER CONTACT

SALESMAN / PM

Jennifer Nichols

DESIGNER

Jesse Black

DWG. DATE

08-18-17

REV. DATE / REVISION

08-23-17 CL / Notes & DT

08-24-17 CW / changes

11-07-17 JB

SCALE

As Noted

FILE

**2017/Starbucks/Colorado
 Springs CO/17-38415/SB
 Colorado Springs.cdr**

DESIGN SPECIFICATIONS ACCEPTED BY:

EST: CLIENT:

SLS/PM: LANDLORD:

THE INTENT OF THIS DRAWING IS TO SHOW A CONCEPTUAL REPRESENTATION OF THE PROPOSED SIGNAGE. DUE TO VARIATIONS IN PRINTING DEVICES AND SUBSTRATES, THE FINISHED PRODUCT MAY DIFFER SLIGHTLY FROM DRAWING.

