

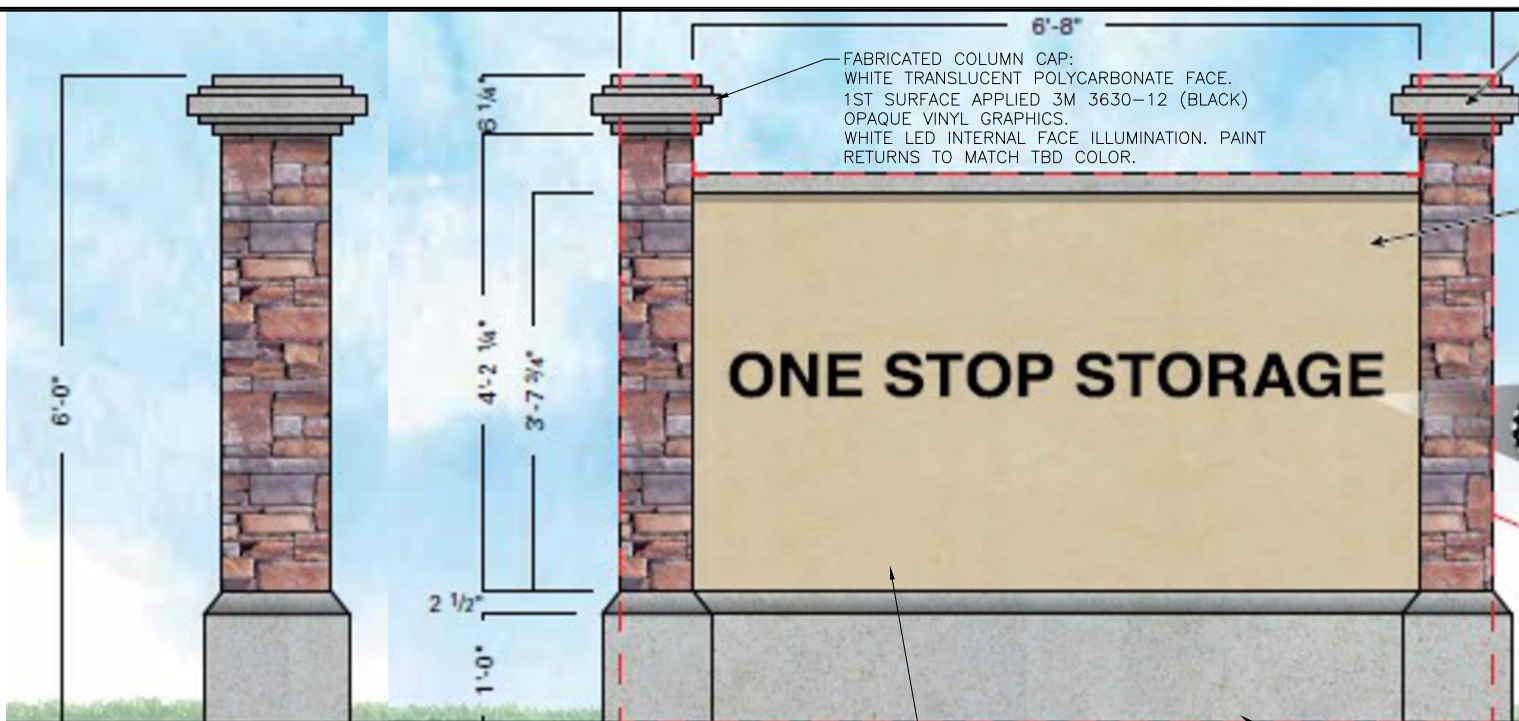
A SIGN 1: 100 SF
C3 SCALE: N.T.S.

PAN CHANNEL LETTERING: WHITE POLYCARBONATE FACES
 RETURNS: STD. BLACK MOUNTED FLUSH TO BUILDING FASCIA. GRAPHICS: 1ST SURFACE 3M 3635-222 DUAL-COLOR FILM BLACK APPLIED VINYL GRAPHICS

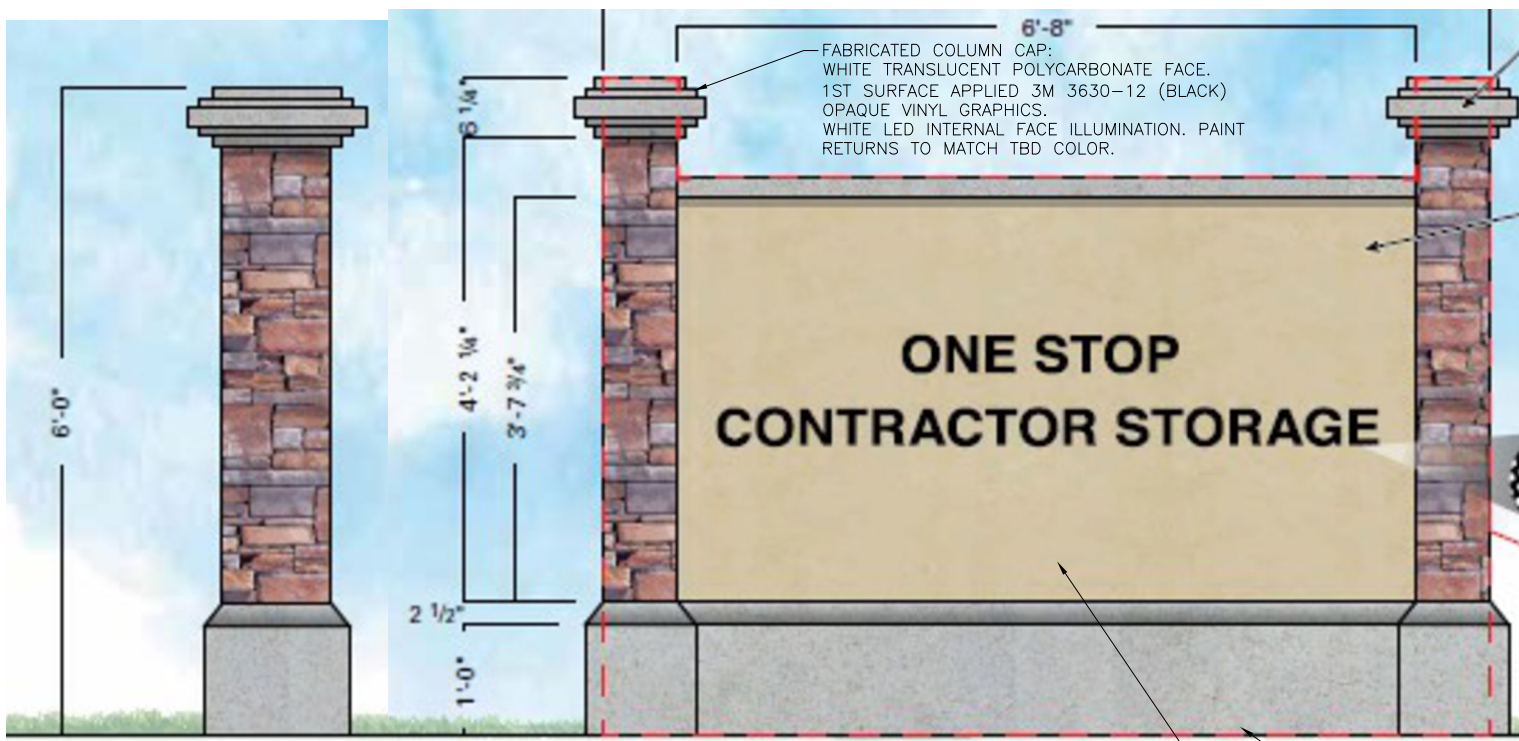
BUILDING WALL SIGN (TYP 2)

ONE STOP STORAGE

D SIGNS 4 & 5: 62 SF
C3 SCALE: N.T.S.



B SIGN 2: 40 SF
C3 SCALE: N.T.S.



C SIGN 3: 40 SF
C3 SCALE: N.T.S.

ALUMINUM MONUMENT CABINET: PAINT COLOR TBD WITH STUCCO FINISH COPY ROUTED OUT AND BACKED WITH WHITE ACYRLIC PANEL. GRAPHICS: 1ST SURFACE 3M 3635-222 DUAL-COLOR FILM BLACK APPLIED VINYL

GENERAL NOTES

FOR REVIEW

NO.	REVISION/ISSUE	DATE

THE O'NEIL GROUP CO.
 4-WAY COMMERCIAL
 SITE DEVELOPMENT PLAN
 SIGNAGE DETAILS

VERTEX
 Consulting Services
 455 E. Pikes Peak Avenue, Suite 101
 Colorado Springs, Colorado 80903
 719-733-8605

PROJECT NO.	SHEET
DATE 09/12/23	C3
PREPARED GGM	
APPROVED CAD	

PCD FILE NO. PPRXXXX

C:\BY ENTITY\Vertex Consulting Services, LLC\Land Development\Colorado Projects\Oneil Group Projects\4 Way Commercial\Site Development\CAD Drawings\Working\4-Way-Comm-Detail.dwg | 11/20/2023 10:41 AM