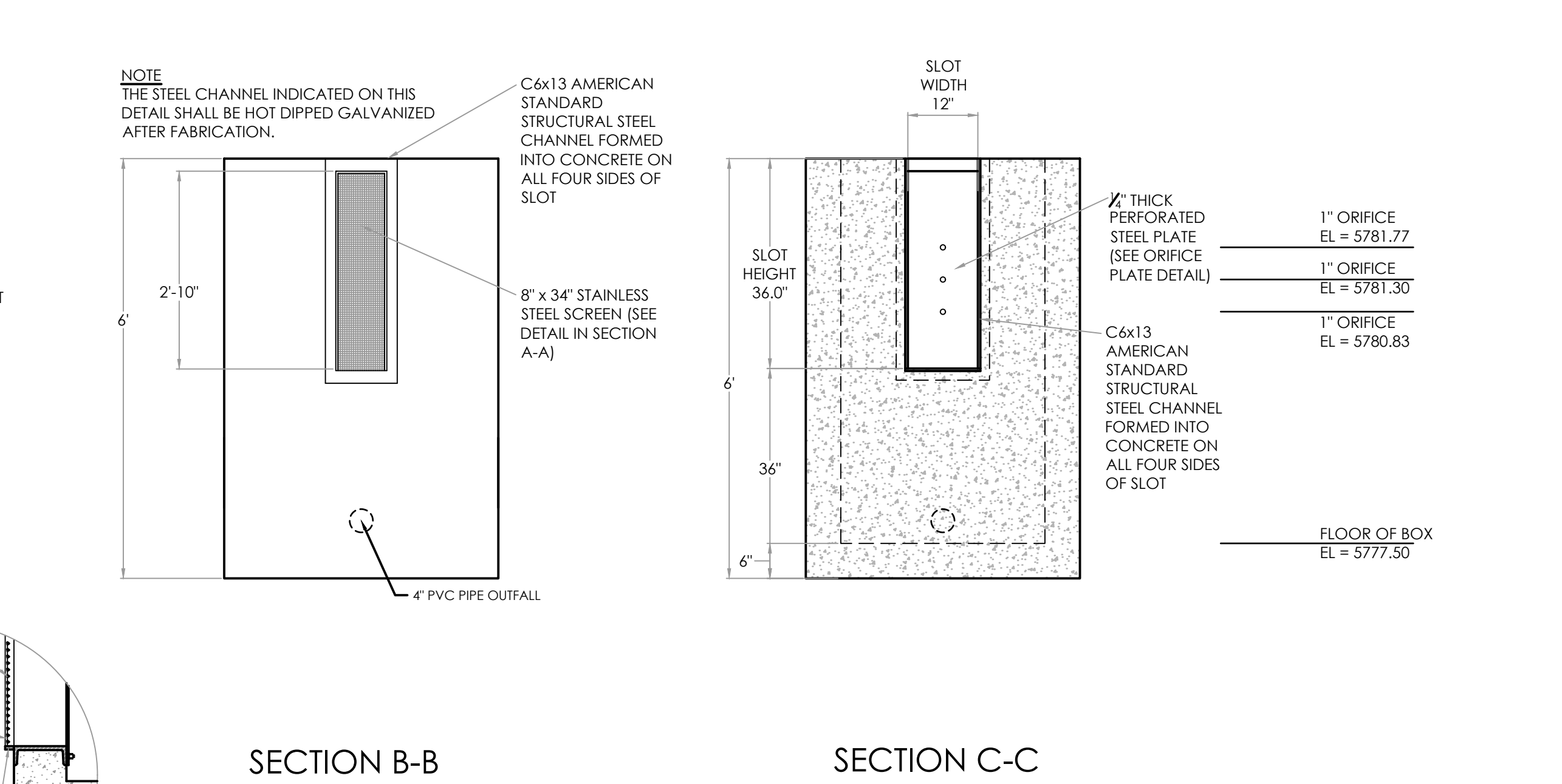
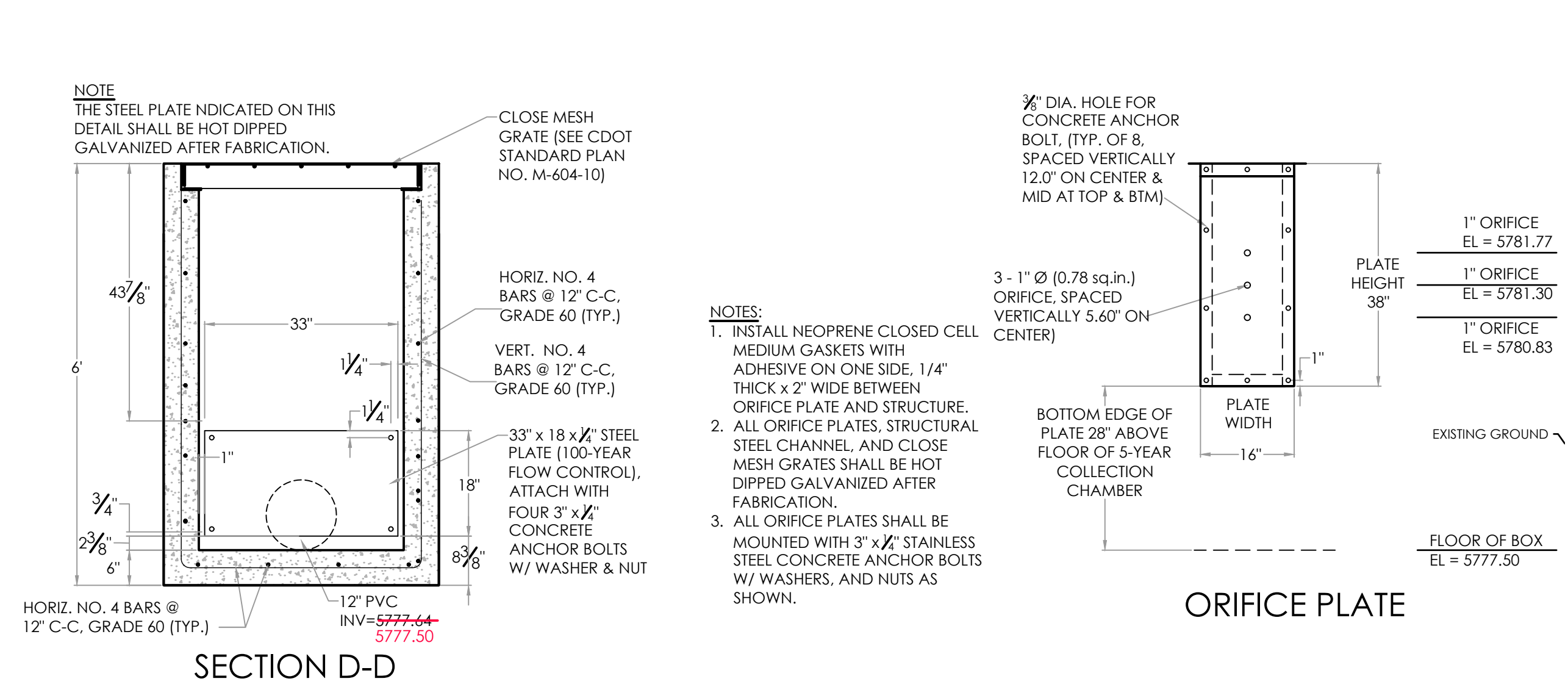
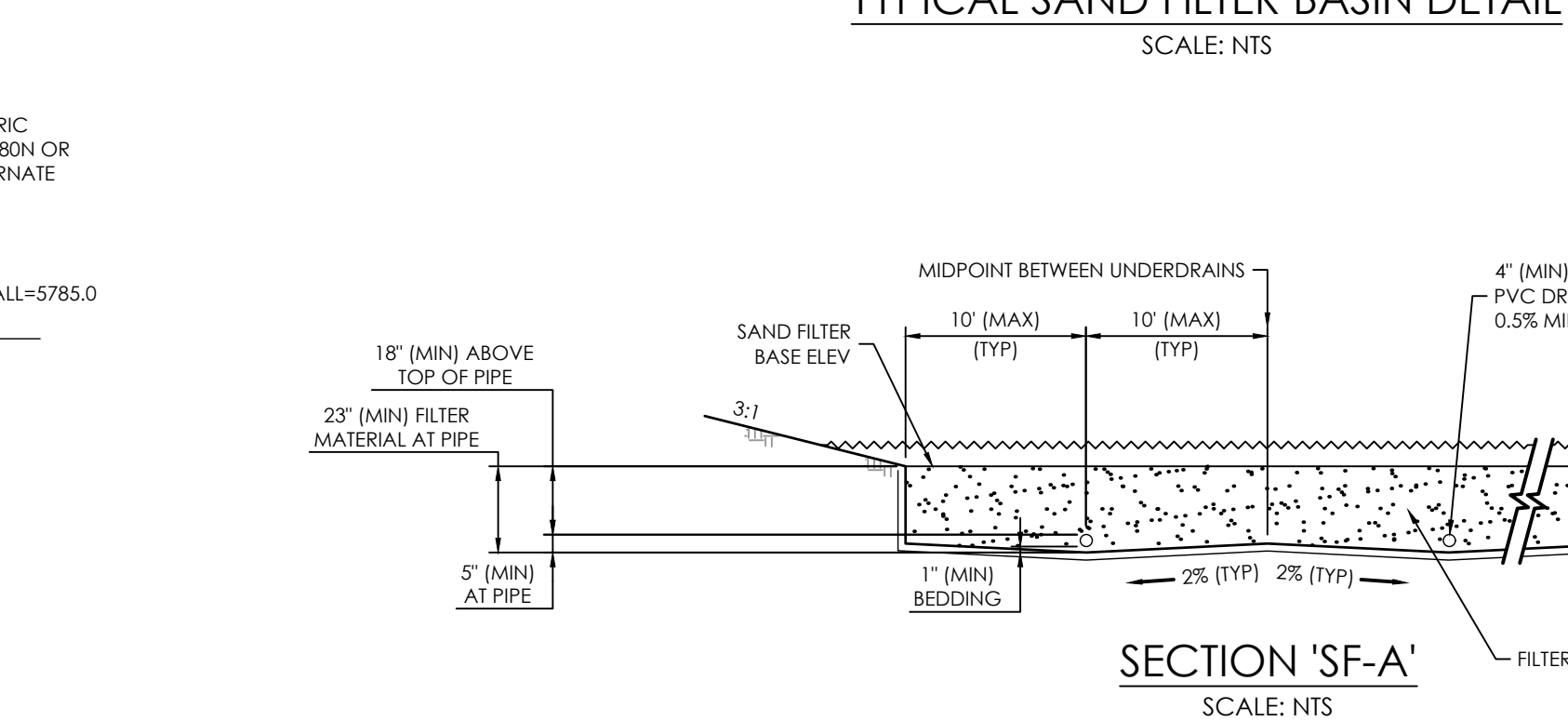
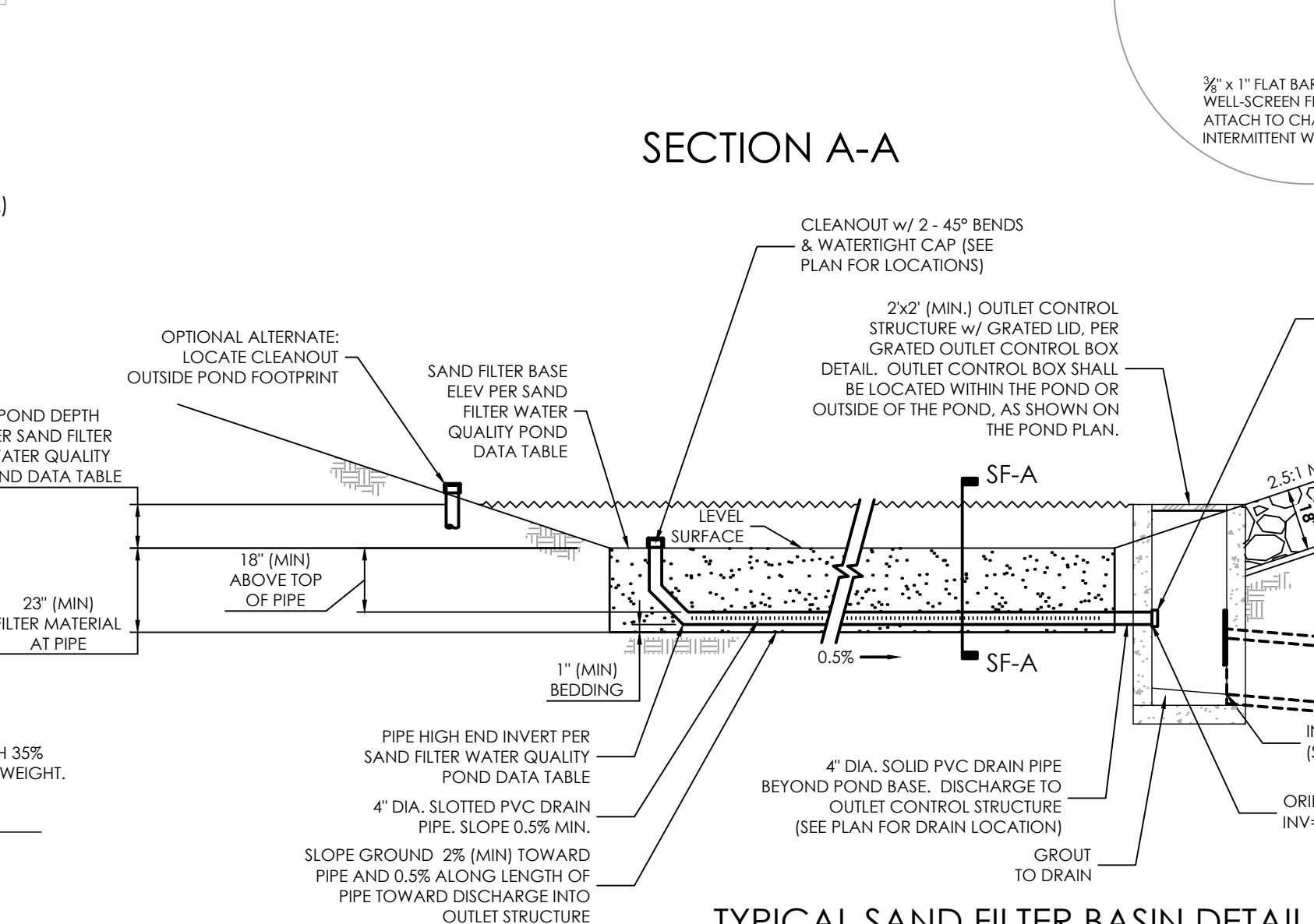
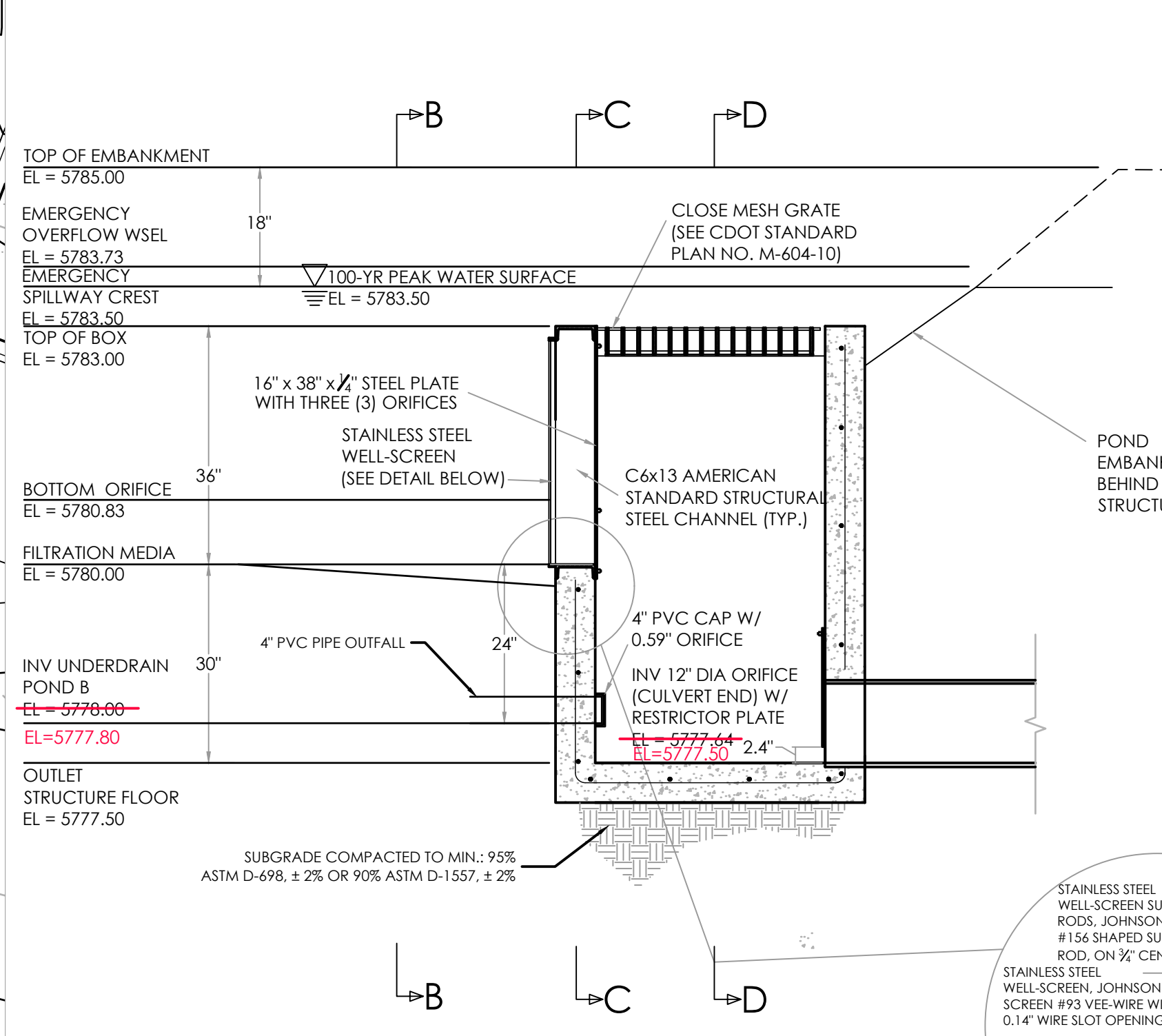
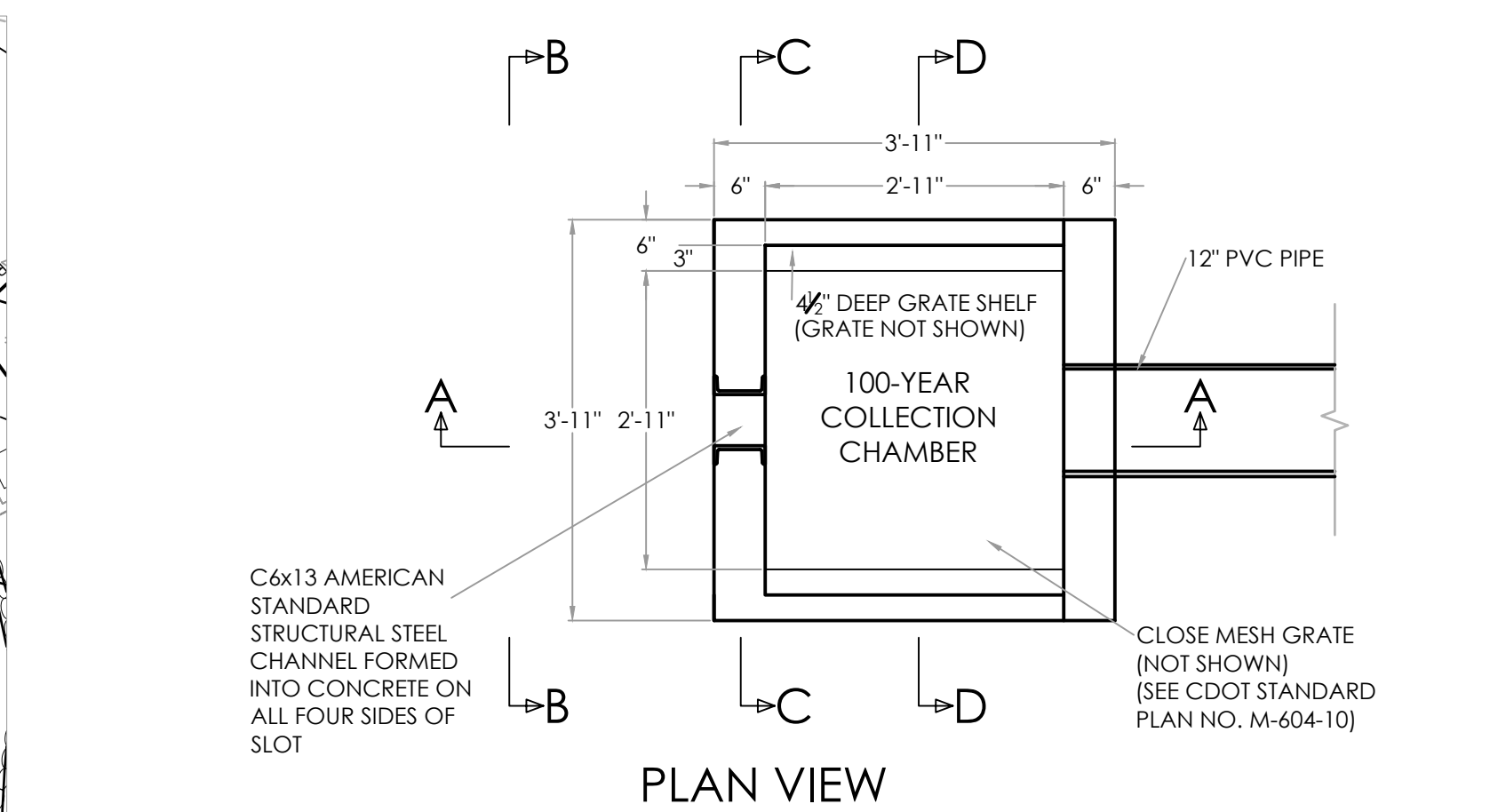
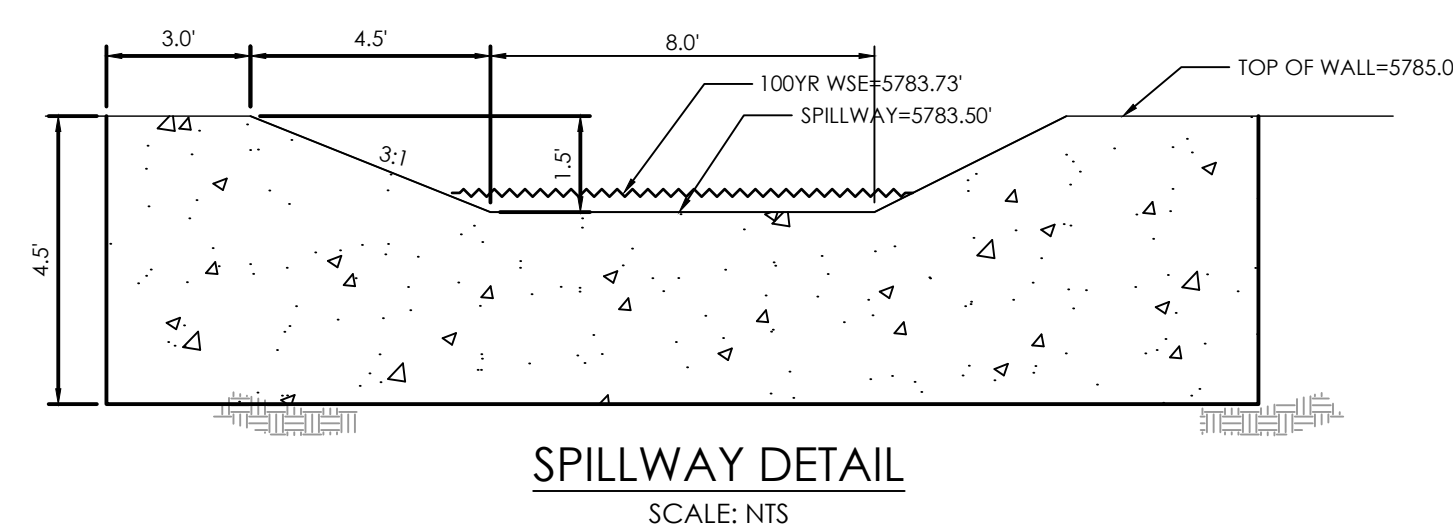
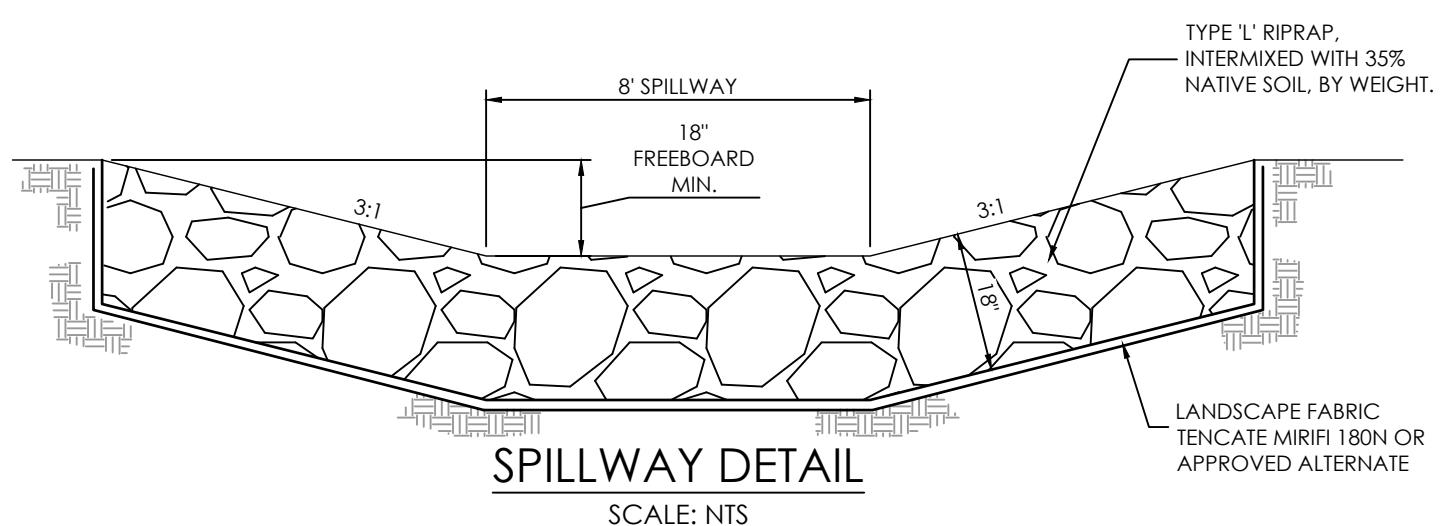


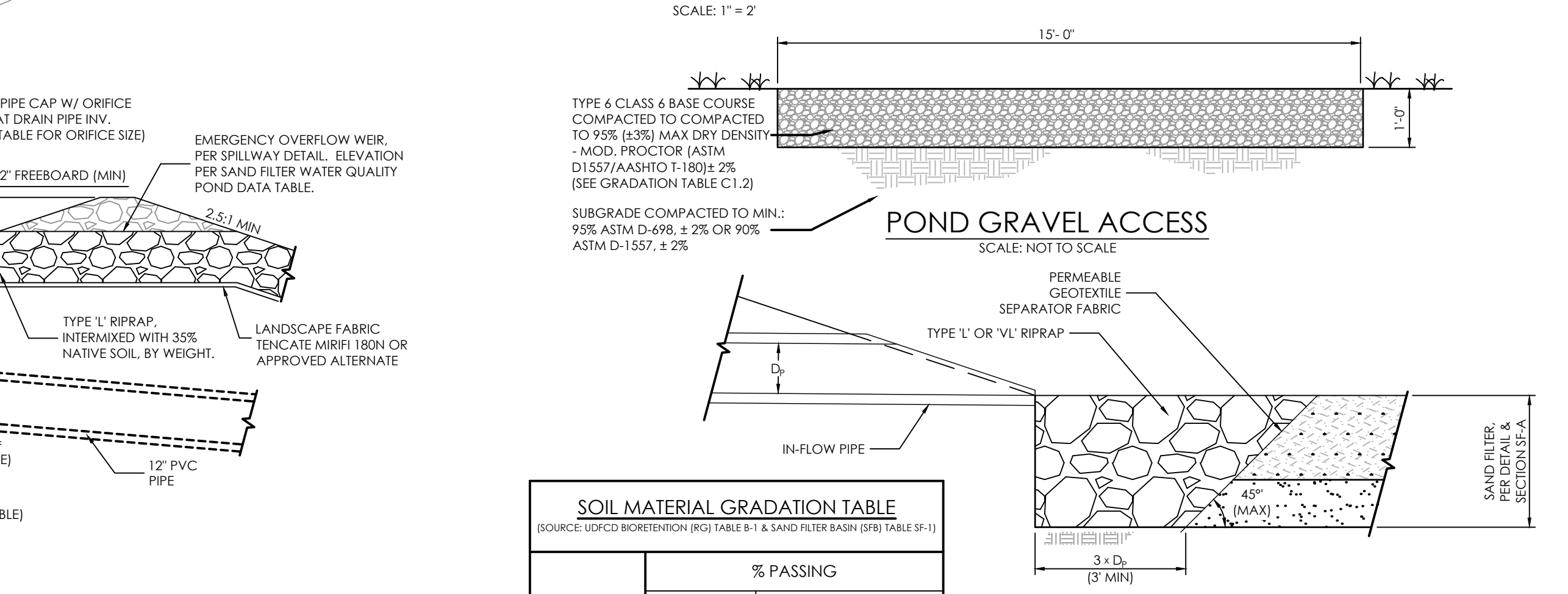
**EXTENDED DETENTION SAND FILTER BASIN DETAIL**  
SCALE: 1" = 10'

**NOTE LEGEND**

- 1 INSTALL CONCRETE SPILLWAY & EMERGENCY OVERFLOW RIP-RAP (SEE SPILLWAY DETAIL)
- 2 INSTALL FULL SPECTRUM SAND FILTER BASIN
- 3 INSTALL OUTLET STRUCTURE (SEE OUTLET DETAIL)
- 4 INSTALL RIP-RAP RUN DOWN (SEE RIP-RAP DETAIL)
- 5 INSTALL HDPE STORM PIPE (SEE STORM PLAN)
- 6 INSTALL PRIVATE STORM INLET (SEE STORM PLAN)
- 7 INSTALL MASONRY BLOCK RETAINING WALL (SEE DETAIL)
- 8 INSTALL 4" SWALE PVC UNDERDRAIN AT 0.5%
- 9 INSTALL 15" WIDE GRAVEL ACCESS DRIVE
- 10 INSTALL RIP-RAP PROTECTION (SEE CONCENTRATED IN-FLOW DETAIL)



**SAND FILTER BASIN OUTLET STRUCTURE DETAILS**  
SCALE: 1" = 2'



**SOIL MATERIAL GRADATION TABLE**  
(SOURCE: UDFCD BIOTRETENTION (RG) TABLE B-1 & SAND FILTER BASIN (SFB) TABLE SF-1)

STANDARD SIEVE SIZE	GROWING MEDIA <sup>(1)(2)</sup>	% PASSING	
		CLASS B	CLASS C
1/2"		100	100
3/4"		100	100
NO. 4	100	20-60	100
NO. 10	85-100	0-3	60-100
NO. 50		0-3	10-30
NO. 100		0-3	0-10
NO. 200	80-90	0-3	0-3
NO. 230	3-17		

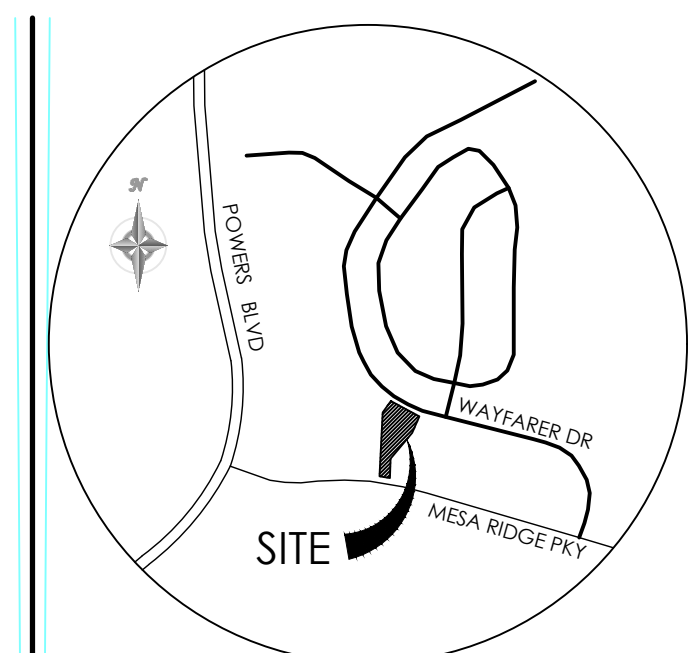
**CONCENTRATED IN-FLOW DETAIL**  
SCALE: NTS

**TABLE SF-2 (SLOTTED PIPE DIMENSIONS)**

PIPE Ø	SLOT LENGTH	SLOT WIDTH	SLOT CENTERS	OPEN AREA (PER SF)
4"	1-1/16"	0.032"	0.413"	1.90 SQ. IN.

**BASIN DATA TABLE**

SAND FILTER BASIN	BASE AREA (SQ. FEET)	FILTER BASIN VOLUME (FT <sup>3</sup> )	FILTER BASIN BTM/INV IN ELEV	POND DEPTH (FT)	TOP OF BOX ELEVATION (W.S.)	OUTLET ORIFICE INV	OUTLET ORIFICE DIAMETER (IN)	INV OUT ELEV	RESTRICTOR PLATE HEIGHT (IN)
BASIN A	592'	5,439	5780.0'	3.5'	5783.00'	5778.0'	0598"	5777.64'	2.4"



**BENCHMARK**  
THE EXISTING TOPOGRAPHY SHOWN ON THIS PLAN WAS PREPARED BY MVE INC. USING DATA PROVIDED BY POLARIS SURVEYING INC. ELEVATIONS SHOWN ARE RELATIVE TO THE COLORADO SPRINGS UTILITIES CONTROL NETWORK (FMS DATUM/NAVD29).

**MVE INC.**  
ENGINEERS & SURVEYORS  
1903 Delaney Street, Suite 200 Colorado Springs, CO 80909 719.635.7336

**REVISIONS**  
ASBUILT - 8/21/2023

DESIGNED BY \_\_\_\_\_  
DRAWN BY \_\_\_\_\_  
CHECKED BY \_\_\_\_\_  
AS-BUILTS BY \_\_\_\_\_  
CHECKED BY \_\_\_\_\_

**SECURITY FIRE STATION NO. 4**

**GRADING & EROSION CONTROL PLAN POND PLAN**

**C1.3** MVE PROJECT 61134  
MVE DRAWING GEC-PP

**APRIL 8, 2021**  
**SHEET 3 OF 7**

PCD FILE # PPR-20-029