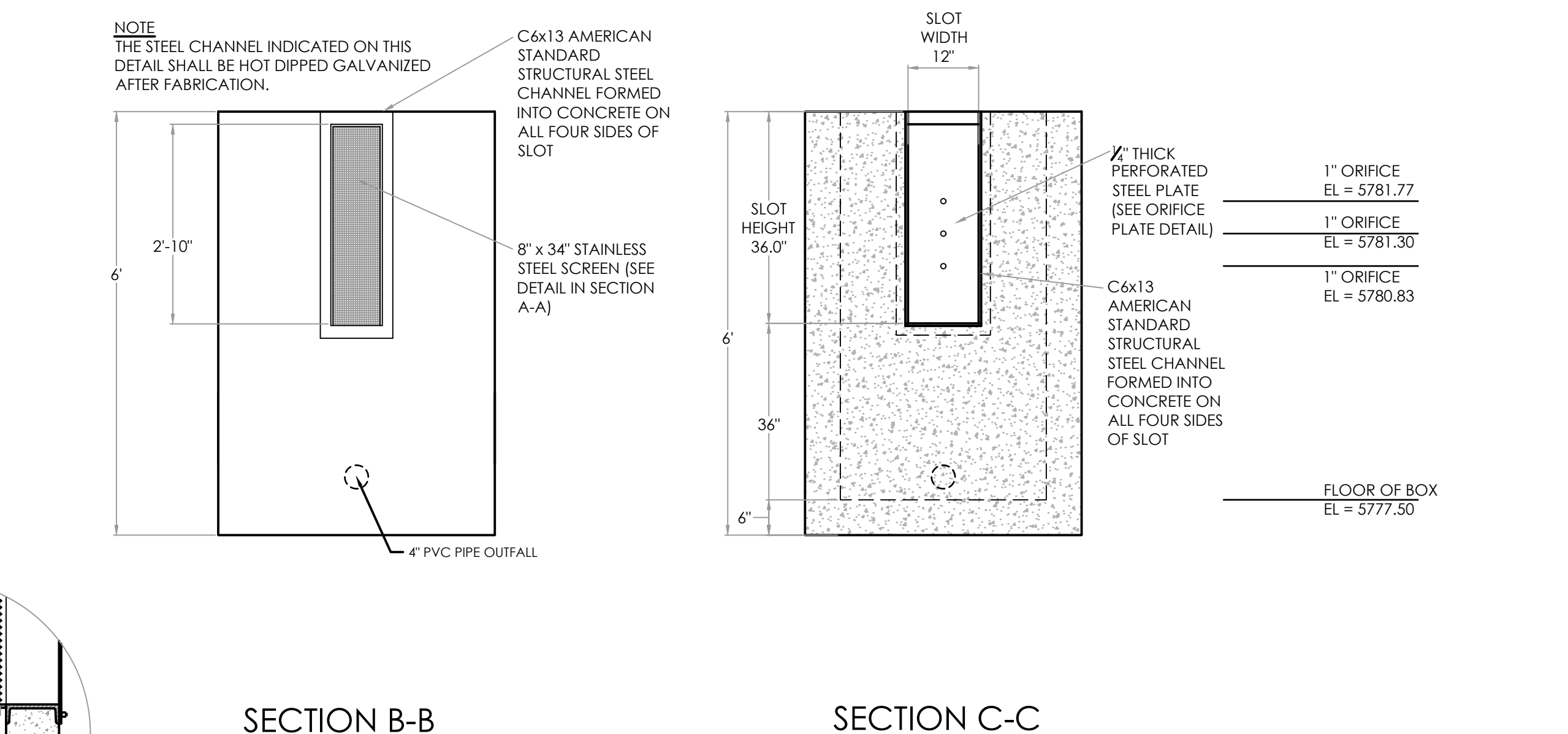
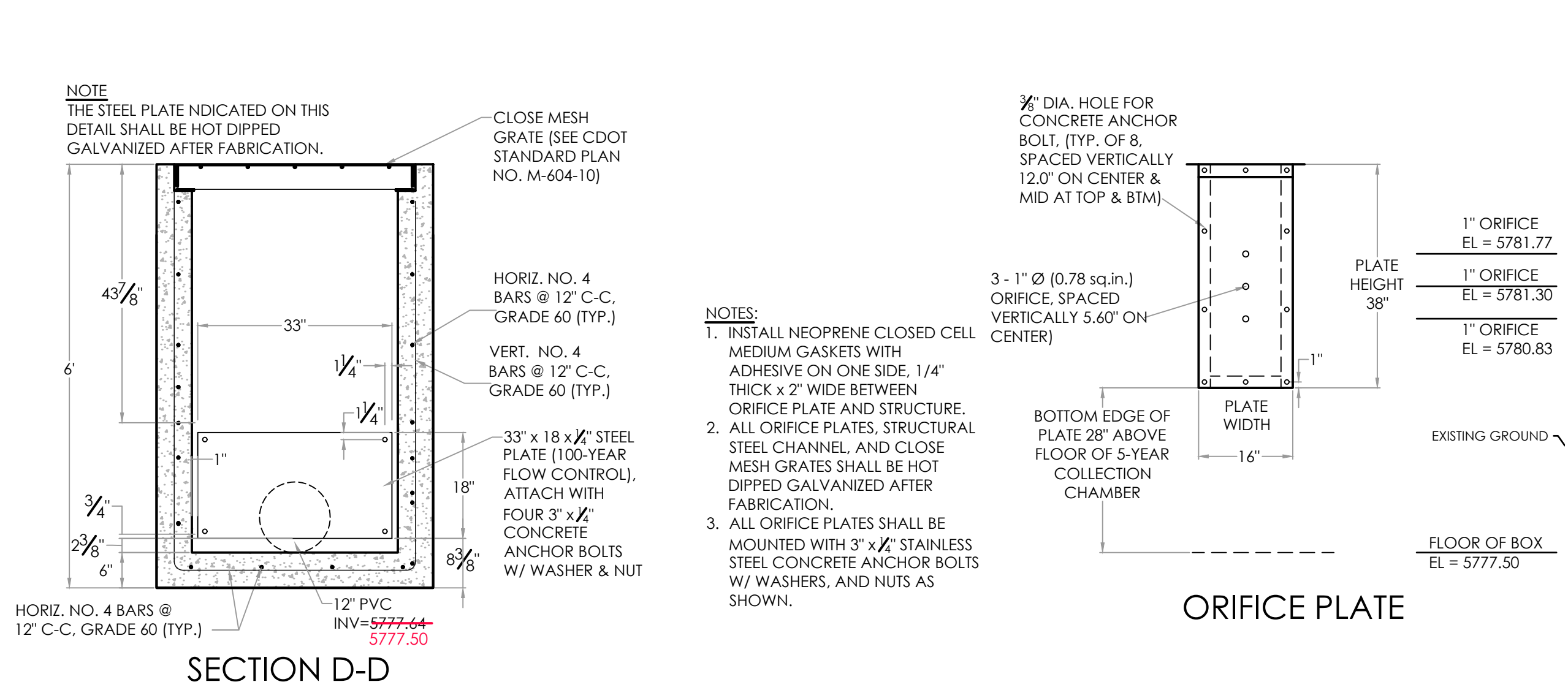
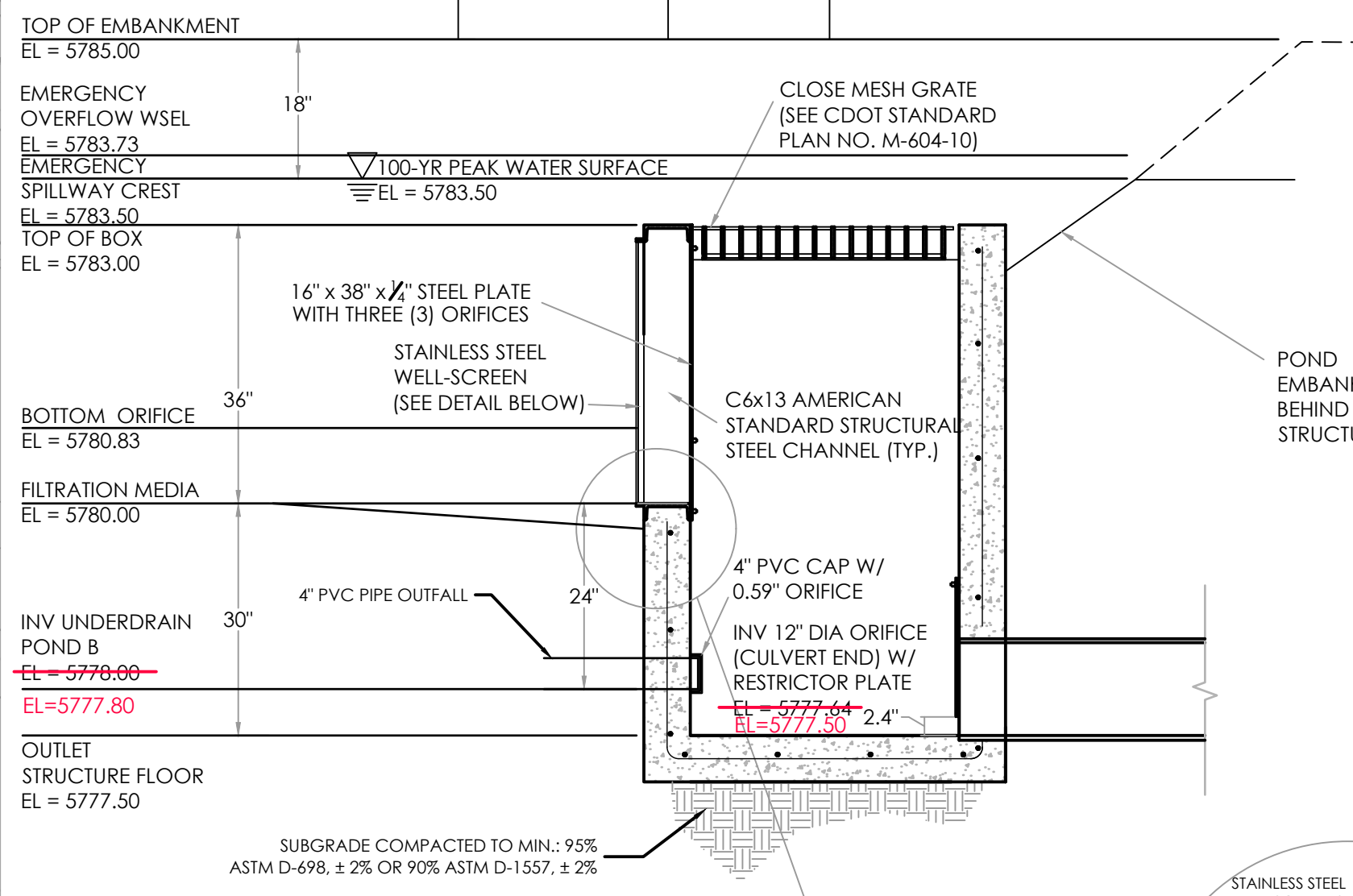
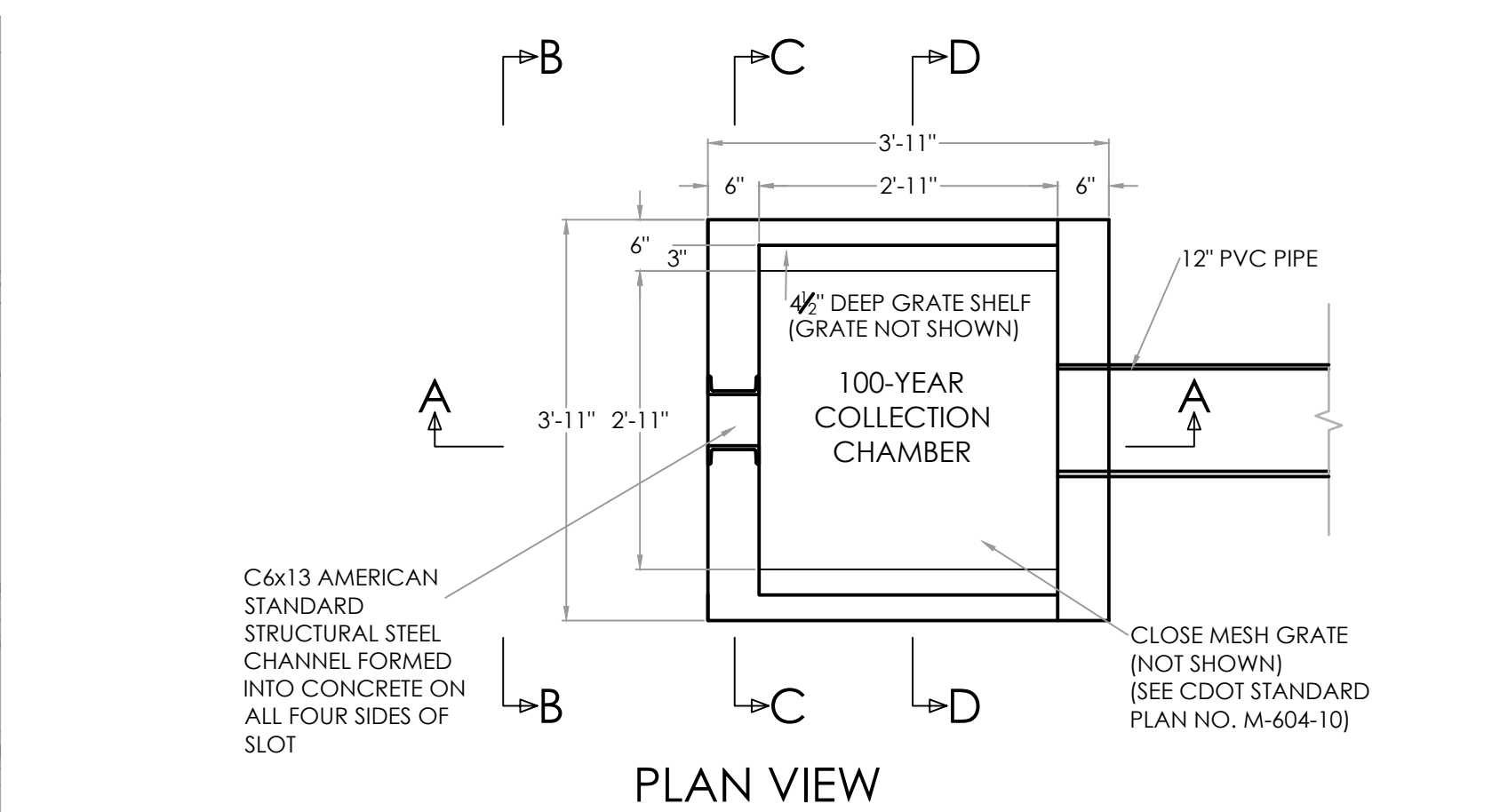
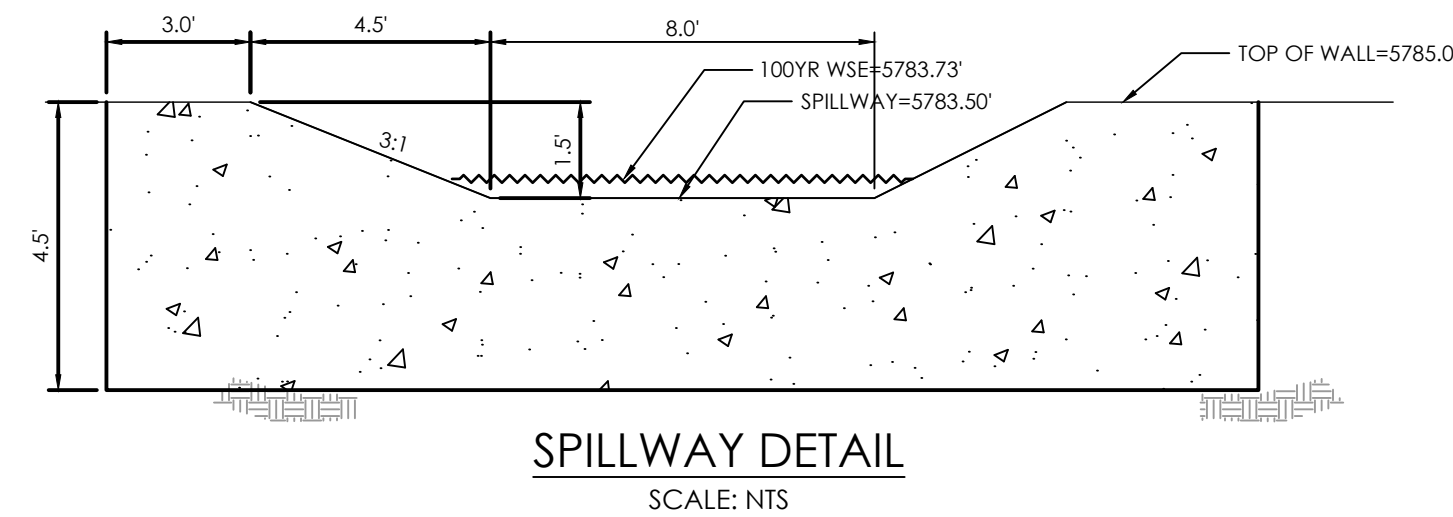
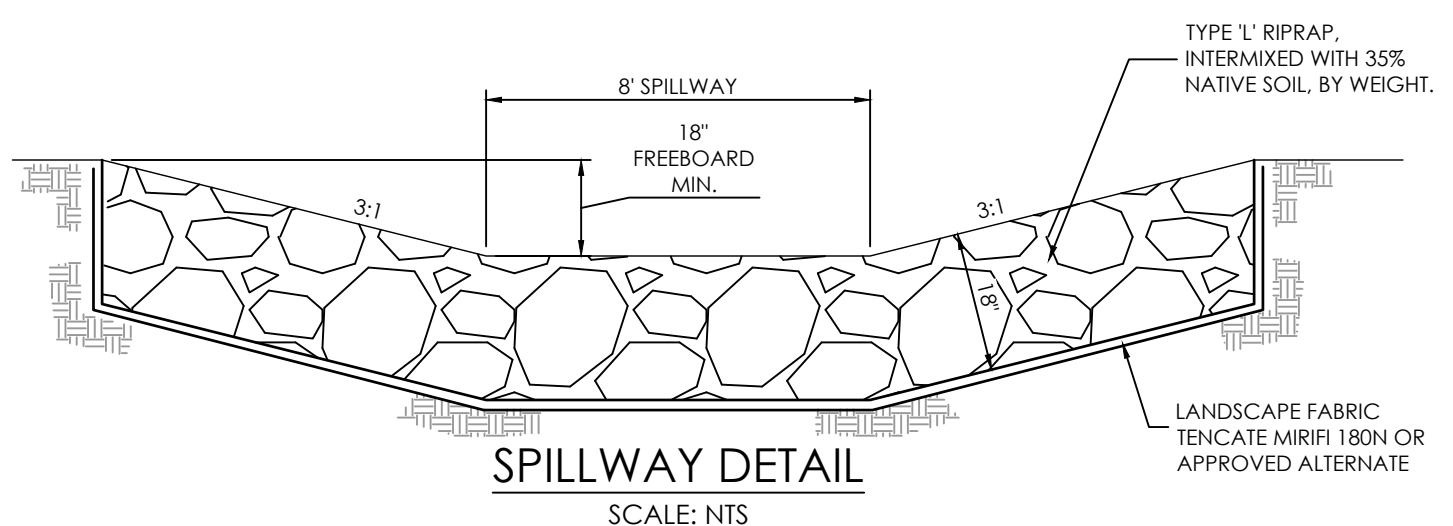


**ASBUILT - 8/21/2023**  
 REG EURV = 0.061 ACFT. / ASBUILT = 0.082 ACFT.  
 REG 100YR = 0.103 ACFT. / ASBUILT = 0.106 ACFT.

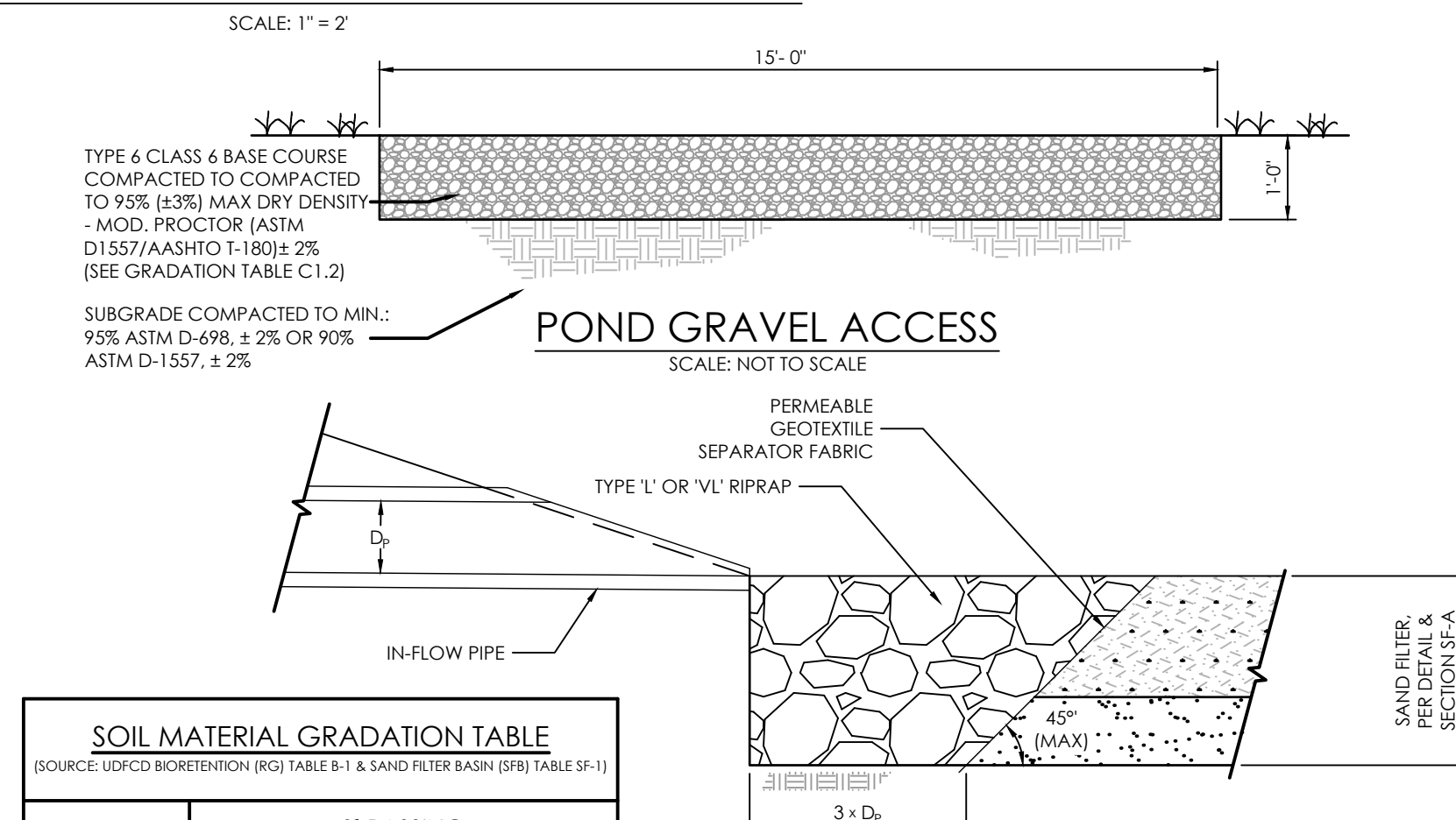
**EXTENDED DETENTION SAND FILTER BASIN DETAIL**  
 SCALE: 1" = 10'

**NOTE LEGEND**

- 1 INSTALL CONCRETE SPILLWAY & EMERGENCY OVERFLOW RIP-RAP (SEE SPILLWAY DETAIL)
- 2 INSTALL FULL SPECTRUM SAND FILTER BASIN
- 3 INSTALL OUTLET STRUCTURE (SEE OUTLET DETAIL)
- 4 INSTALL RIP-RAP RUN DOWN (SEE RIP-RAP DETAIL)
- 5 INSTALL HDPE STORM PIPE (SEE STORM PLAN)
- 6 INSTALL PRIVATE STORM INLET (SEE STORM PLAN)
- 7 INSTALL MASONRY BLOCK RETAINING WALL (SEE DETAIL)
- 8 INSTALL 4" SWALE PVC UNDERDRAIN AT 0.5%
- 9 INSTALL 15" WIDE GRAVEL ACCESS DRIVE
- 10 INSTALL RIP-RAP PROTECTION (SEE CONCENTRATED IN-FLOW DETAIL)



**SAND FILTER BASIN OUTLET STRUCTURE DETAILS**  
 SCALE: 1" = 2'



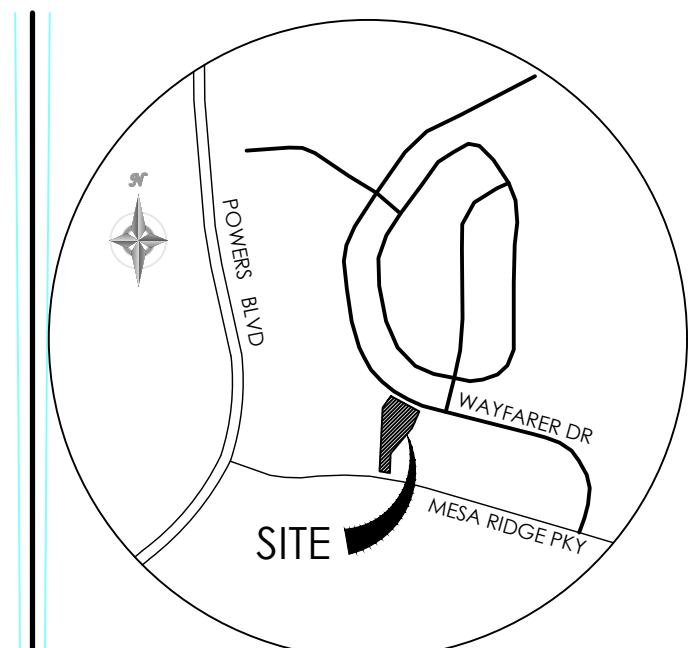
SOIL MATERIAL GRADATION TABLE (SOURCE: UDFCD BIOTRETENTION (RG) TABLE B-1 & SAND FILTER BASIN (SF) TABLE SF-1)			
STANDARD SIEVE SIZE	GROWING MEDIA <sup>(1)(1)(2)</sup>	% PASSING	
		CLASS B	CLASS C
1/2"		100	100
3/4"		100	100
NO. 4	100	20-60	100
NO. 10	85-100	0-30	100
NO. 50		0-30	10-30
NO. 100		0-30	0-10
NO. 200		0-30	0-3
NO. 230		3-17	0-3

**CONCENTRATED IN-FLOW DETAIL**  
 SCALE: NTS

TABLE SF-2 (SLOTTED PIPE DIMENSIONS)				
PIPE Ø	SLOT LENGTH	SLOT WIDTH	SLOT CENTERS	OPEN AREA (PER SF)
4"	1-1/16"	0.032"	0.413"	1.90 SQ. IN.

BASIN DATA TABLE							
SAND FILTER BASIN	BASE AREA (SQ. FEET)	FILTER BASIN VOLUME (FT <sup>3</sup> )	FILTER BASIN BTM/INV IN ELEV	POND DEPTH (FT)	TOP OF BOX ELEVATION (W.S.)	OUTLET ORIFICE INV	RESTRICTOR PLATE HEIGHT (IN)
BASIN A	592'	5,439'	5780.0'	3.5'	5783.00'	5778.0'	2.4"

**SAND FILTER SPECIFICATIONS, NOTES & REFERENCES:**  
 REFERENCE URBAN DRAINAGE AND FLOOD CONTROL DISTRICT (UDFCD), URBAN STORM DRAINAGE CRITERIA MANUAL VOLUME 3, SECTION 1-6, FOR FULL SET OF SAND FILTER DETAILS AND SPECIFICATIONS AS IDENTIFIED.  
 - **FILTER MATERIAL** - CLASS B or CLASS C FILTER MATERIAL, PER SOIL MATERIAL GRADATION TABLE.  
 - **PERMEABLE GEOTEXTILE SEPARATOR FABRIC** - TENCATE MIRIFEL 180N OR APPROVED ALTERNATE.  
 - **CONCENTRATED INFLOW** - PER SLOTTED PIPE - CONTECH A-2000, OR EQUAL, PER PIPE SPECIFICATION TABLE.



**BENCHMARK**  
 THE EXISTING TOPOGRAPHY SHOWN ON THIS PLAN WAS PREPARED BY MVE INC. USING DATA PROVIDED BY POLARIS SURVEYING INC. ELEVATIONS SHOWN ARE RELATIVE TO THE COLORADO SPRINGS UTILITIES CONTROL NETWORK (FMS DATUM/NAVD29).

Even if everything was built exactly per plan, we need an electronic PDF of the original drawings to be signed, dated, and stamped with "As-Built" on each sheet.

The Detention Maintenance Agreement was never finalized or signed. Please work with the applicant/owner and the County Attorney (Lori Seago) to do so as soon as possible.

**MVE INC.**  
 ENGINEERS & SURVEYORS  
 1903 Delaney Street, Suite 200, Colorado Springs, CO 80909 719.635.5736

REVISIONS  
**ASBUILT - 8/21/2023**

**SECURITY FIRE STATION NO. 4**

**GRADING & EROSION CONTROL PLAN POND PLAN**

**C1.3** MVE PROJECT 61134  
 MVE DRAWING GEC-PP

APRIL 8, 2021  
 SHEET 3 OF 7

PCD FILE # PPR-20-029  
 5777.50