



This revision has been modified by the property owner and does not represent the original work of the original landscape architect.

General Note:

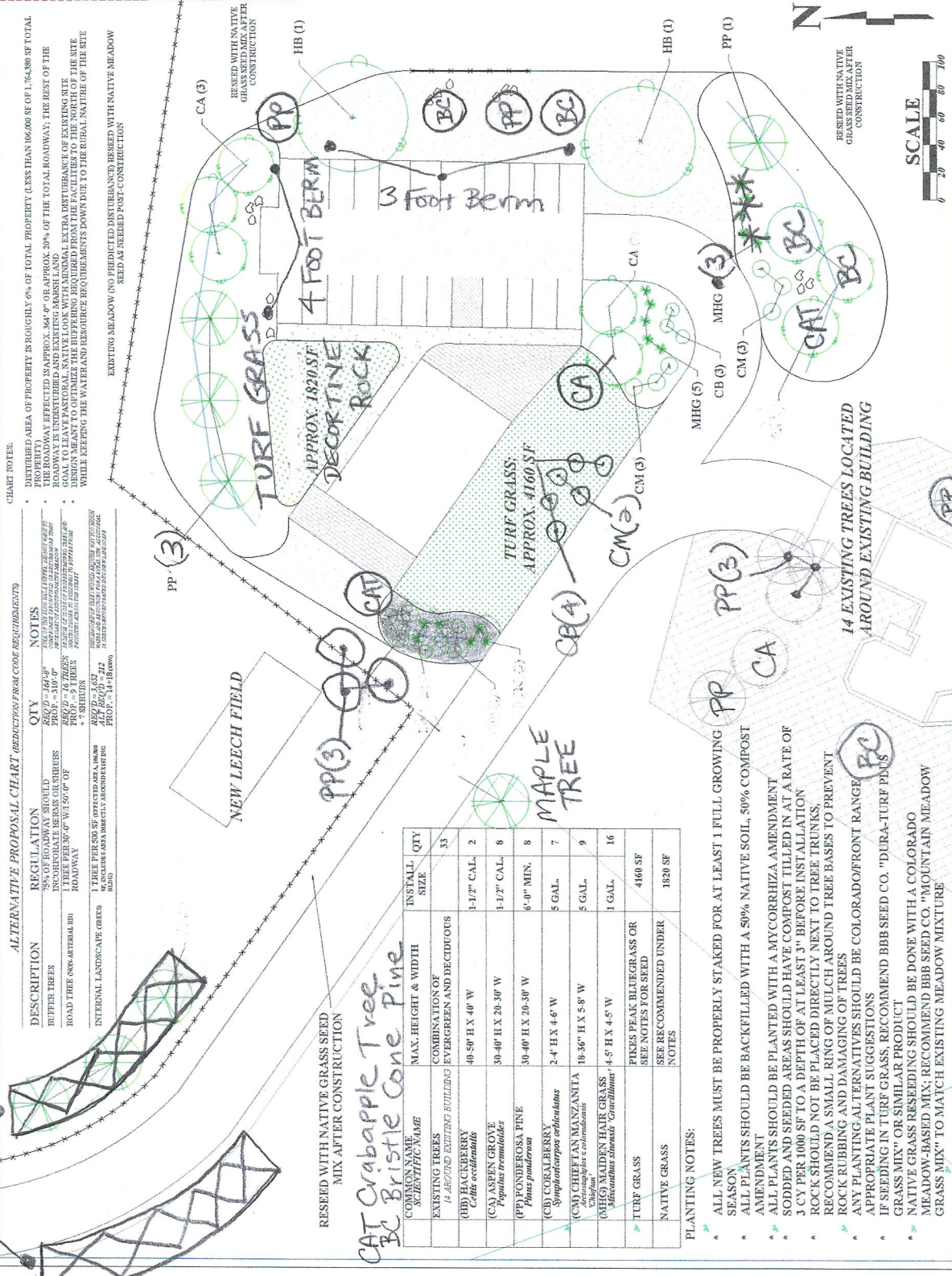
- ALL PLANTING QUANTITIES AND QUANTITIES ARE APPROXIMATE AND SHOULD BE CONFIRMED BY THE LANDSCAPE ARCHITECT BEFORE INSTALLATION OCCURS.
- ALL PLANTING BEDS SHOULD BE CONSTRUCTED WITH A 2" SOIL IMPROVEMENT BERM, 1000 SF.
- ALL ROCK WILL HAVE UNDERNEATH LANDSCAPE FABRIC RECOMMENDED USING DEWIT MULCH UNDER ALL ROCK MULCH.
- ALL WOOD MULCH AREAS UNDERNEATH LANDSCAPE FABRIC APPLIED MATERIALS (IE MULCH AND ROCK, ROCK AND TURF, ETC) SHOULD BE SEPARATE MULCHES TO KEEP THEM SEPARATE.
- ALL PLANTINGS WILL BE ON AN IRRIGATION SYSTEM SO THAT ALL PLANTS WILL BE ADEQUATELY WATERED.

ID INITIAL DESIGN 9/18/20
R2 REVISION 12/24

WIZ ENTERPRISE, LLC
 WILLIAM J. ZWICK, P.L. ASLA
 CO LICENSE NO. LA. 0006012
 11 TEMPLE DR.
 PUEBLO, CO 81005
 (719) 239-4485
 wjz@wizenterprisellc.com

CS APEX LANDSCAPE DESIGN
 FOUNDED BY:
 DAVID & CINDY SMALLIDGE
 11953 FALCON HWY
 FORT COLLINS, CO
 80526
 (970) 226-4444
 www.csapexlandscape.com

PROJECT: L104
DATE: 4/16/2024
SCALE: 1/4" = 1'-0"



RUSTIC FENCE

Chart Notes:

- RESEED WITH NATIVE GRASS SEED MIX AFTER CONSTRUCTION
- CAT Crabapple Tree
- BC Bristle Cone Pine



COMMON NAME / SCIENTIFIC NAME	MAX. HEIGHT & WIDTH	COMBINATION OF EVERGREEN AND DECIDUOUS	INSTALL. SIZE	QTY
14 ARCHING EXISTING BUILDING				33
(BB) HACKBERRY <i>Celtis occidentalis</i>	40-50' H X 40' W		1-1 1/2" CAL.	2
(CA) ASPEN GROVE <i>Populus tremuloides</i>	30-40' H X 20-30' W		1-1 1/2" CAL.	8
(PP) FONDEROSA PINE <i>Pinus ponderosa</i>	30-40' H X 20-30' W		6" MIN.	8
(CB) CORAL BERRY <i>Symphoricarpos orbiculatus</i>	2-4' H X 4-6' W		5 GAL.	7
(CM) CHEFTAN MANZANITA <i>Artemisia tridentata</i>	18-36" H X 5-9' W		5 GAL.	9
(MHG) MOUNTAIN HART GRASS <i>Heteropogon contortus</i>	4-5' H X 4-5' W		1 GAL.	16
TURF GRASS	PIKES PEAK BLUEGRASS OR SEE NOTES FOR SEED		4160 SF	
NATIVE GRASS	SEE RECOMMENDED UNDER NOTES		1820 SF	