

CONSTRUCTION NOTES

NO WETLANDS ARE TO BE PERMANENTLY DISTURBED PER THIS GRADING PLAN.

NO EARLY GRADING IS TO OCCUR WITHIN THE 100 YEAR FLOODPLAIN.

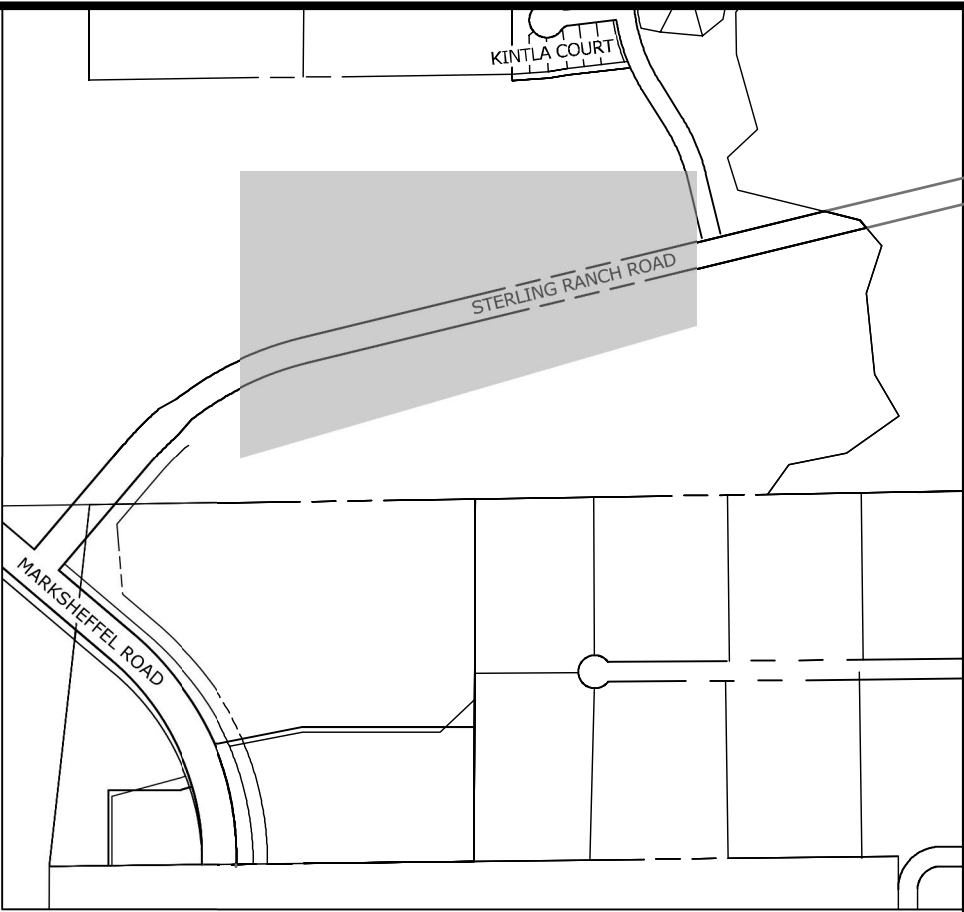
ALL TEMPORARY RIPRAP SHOWN ON THE PLANS SHALL BE TYPE 'M'. RIPRAP SHALL BE PLACED IN THE LOCATIONS INDICATED BY THE PLAN OR IN AREAS AS THE CONTRACTOR SEES FIT TO CONTROL EROSION. ALL RIPRAP SHALL BE PLACED AT A MINIMUM THICKNESS OF 1.5' DEEP.

ADDITIONAL NOTES

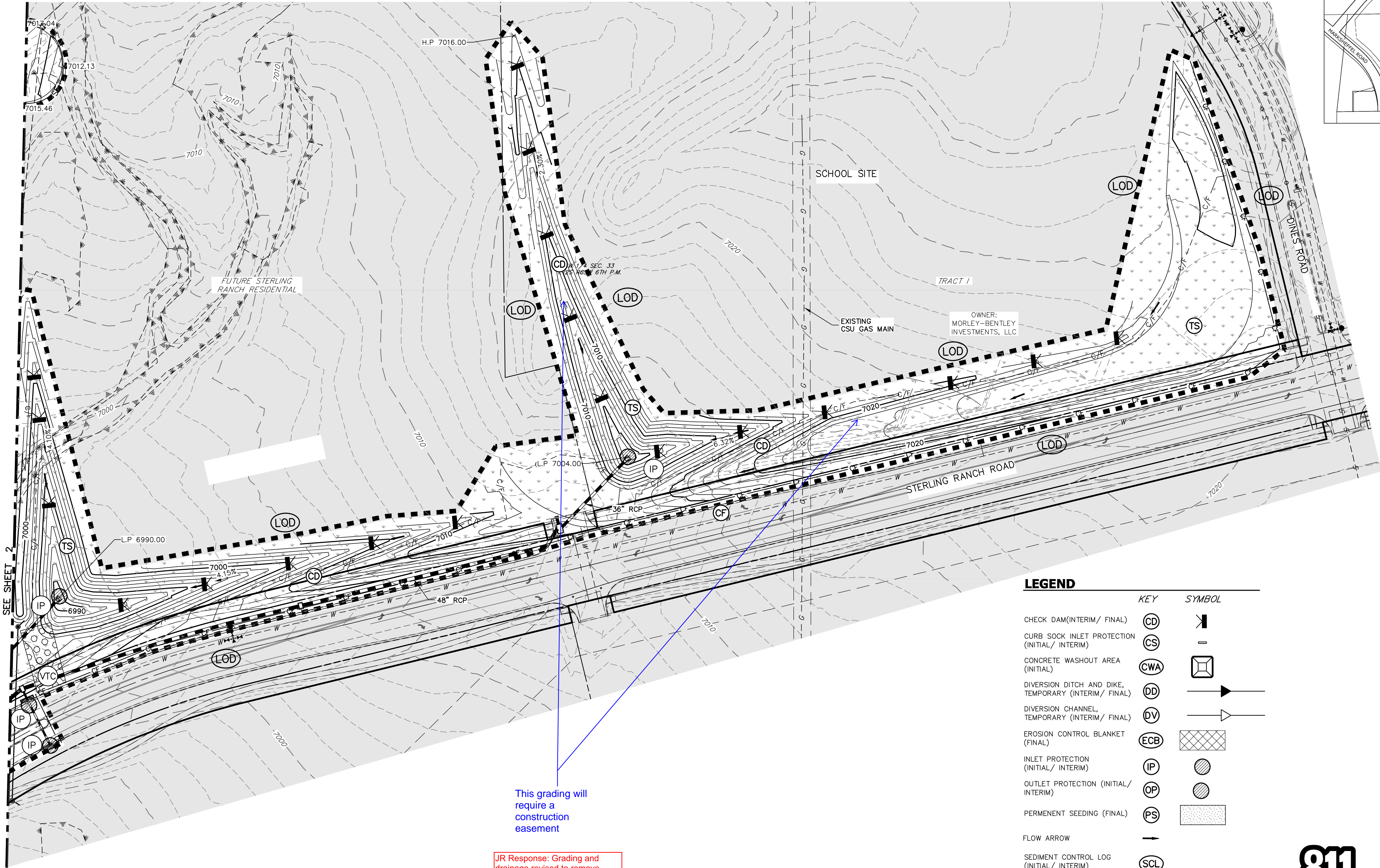
STAGING AREA TO BE DETERMINED BY CONTRACTOR IN THE FIELD. THE LOCATIONS SHALL BE DELINEATED ON THIS PLAN BY THE CONTRACTOR.

THE EROSION CONTROL DELINEATED ON THIS PLAN SHALL BE REGULARLY UPDATED BY THE CONTRACTOR.

AREA TO BE CONSTRUCTED IN SF-20-015



KEY MAP
SCALE: NTS



This grading will require a construction easement

JR Response: Grading and drainage revised to remove grading on school site.

LEGEND

	KEY	SYMBOL
CHECK DAM (INTERIM/ FINAL)	CD	
CURB SOCK INLET PROTECTION (INITIAL/ INTERIM)	CS	
CONCRETE WASHOUT AREA (INITIAL)	CWA	
DIVERSION DITCH AND DIKE, TEMPORARY (INTERIM/ FINAL)	DD	
DIVERSION CHANNEL, TEMPORARY (INTERIM/ FINAL)	DV	
EROSION CONTROL BLANKET (FINAL)	ECB	
INLET PROTECTION (INITIAL/ INTERIM)	IP	
OUTLET PROTECTION (INITIAL/ INTERIM)	OP	
PERMANENT SEEDING (FINAL)	PS	
FLOW ARROW		
SEDIMENT CONTROL LOG (INITIAL/ INTERIM)	SSL	
CUT/FILL MARK		--- C/F ---
SILT FENCE (INITIAL)	SF	
CONSTRUCTION FENCE	CF	
STABILIZED STAGING AREA (INITIAL)	SSA	
TEMPORARY SEEDING (FINAL)	TS	
VEHICLE TRACKING CONTROL (INITIAL)	VTC	
SEDIMENT BASIN (INITIAL)	SB	



Know what's below.
Call before you dig.

60 30 0 60 120
ORIGINAL SCALE: 1" = 60'



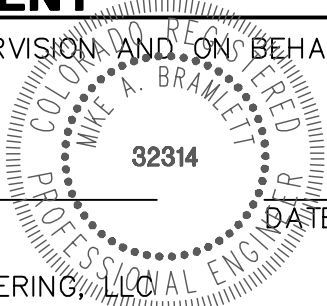
ENGINEER'S STATEMENT

PREPARED UNDER MY DIRECT SUPERVISION AND ON BEHALF OF JR ENGINEERING

Mike A. Bramlett

MIKE A. BRAMLETT, P.E.
COLORADO P.E. 32314

FOR AND ON BEHALF OF JR ENGINEERING, LLC



DATE 5/26/21

STERLING RANCH FILING NO.2

FINAL GRADING & EROSION
CONTROL PLAN

SHEET 6 OF 13

JOB NO. 25188.01

PREPARED FOR

SR LAND, LLC

20 BOULDER CRESCENT

SUITE 201

COLORADO SPRINGS, CO 80903

JAMES F. MORLEY

(719) 471-1742

J.R. ENGINEERING

A Western Company



Centennial 303-740-9888 • Colorado Springs 719-583-2583
Fort Collins 970-491-9888 • www.jrengineering.com

BY

DATE

REVISION

No.

1"=60'

H-SCALE

V-SCALE

DATE

DESIGNED BY

DRAWN BY

CHECKED BY