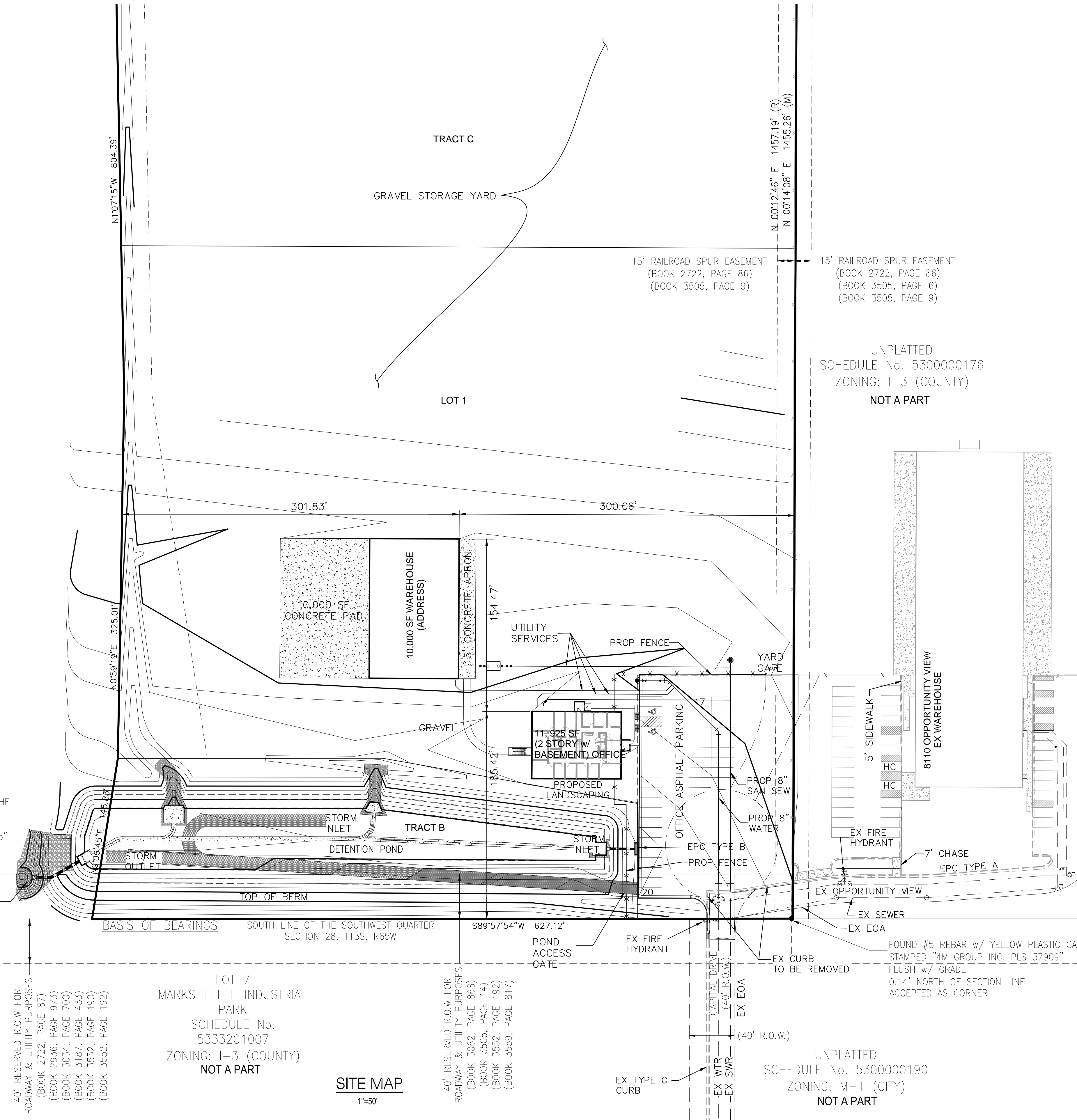
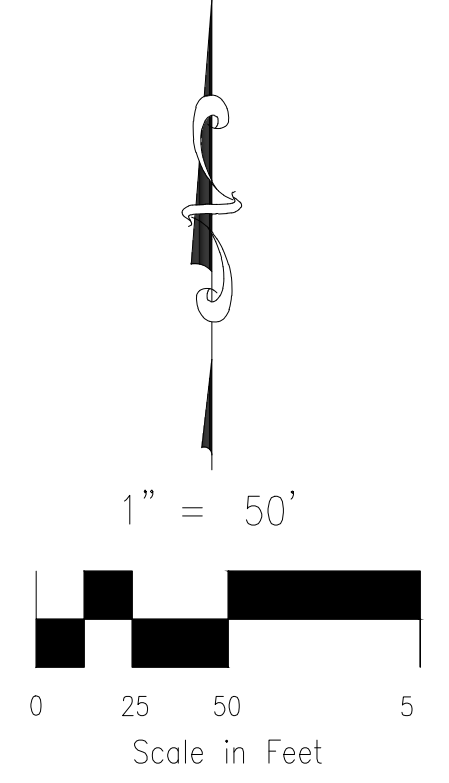


# SITE DEVELOPMENT PLAN - DWIRE YARD

EL PASO COUNTY, STATE OF COLORADO  
 A PORTION OF THE SOUTHWEST QUARTER OF SECTION 28, TOWNSHIP  
 13 SOUTH, RANGE 65 WEST OF THE 6TH PRINCIPAL MERIDIAN,



### SITE DATA:

#### OWNERS NAME & ADDRESS

DL HOLDINGS LLC  
 6547 N. ACADEMY BLVD #523  
 COLORADO SPRINGS, CO 80918

SITE PLAN ACREAGE LOT 1: 6.887 AC  
 PROPERTY SCHEDULE NUMBER: 5300000552  
 EXISTING ZONING: I-3 CAD-O HEAVY INDUSTRIAL  
 PROPOSED ZONING: I-3 CAD-O HEAVY INDUSTRIAL  
 DEVELOPMENT SCHEDULE: 2020-2021

CURRENT LAND USE: VACANT  
 PROPOSED USE: OFFICE/WAREHOUSE STORAGE YARD

DWIRE STORAGE YARD FIL. NO. 1  
 NUMBER OF LOTS: 1  
 NUMBER OF TRACTS: 3

TOTAL SITE PERIMETER SETBACKS  
 A MINIMUM 25' STRUCTURAL SETBACK

TOTAL AREA OF PROPERTY: 843,414 SF, 19.362 AC  
 TOTAL DISTURBED: 824,532 SF, 18.929 AC

### BUILDING DATA:

NEW BUILDING FOOTPRINT AREA: 11,925 SF NON-SPRINKLED  
 TYPE V-B

NEW BUILDING HEIGHT: 36'0"  
 NEW BUILDING CONSTRUCTION TYPE:

PARKING REQUIRED: OFFICE SPACE 90  
 PARKING PROVIDED: OFFICE SPACE 93  
 HANDICAP PARKING REQUIRED: 4  
 HANDICAP PARKING PROVIDED: 4

PARKING REQUIRED: WAREHOUSE 19  
 PARKING PROVIDED: WAREHOUSE 21  
 HANDICAP PARKING REQUIRED: 1  
 HANDICAP PARKING PROVIDED: 1

### LEGAL DESCRIPTION:

A PARCEL OF LAND IN THE SOUTHWEST QUARTER (SW 1/4) OF SECTION 28, TOWNSHIP 13 SOUTH, RANGE 65 WEST OF THE 6TH PRINCIPAL MERIDIAN, EL PASO COUNTY, COLORADO MORE PARTICULARLY DESCRIBED AS FOLLOWS:

BASIS OF BEARINGS: A PORTION OF THE SOUTH LINE OF THE SOUTHWEST QUARTER (SW 1/4) OF SECTION 28, TOWNSHIP 13 SOUTH, RANGE 65 WEST OF THE 6TH PRINCIPAL MERIDIAN, EL PASO COUNTY, COLORADO. THE SECTION CORNER COMMON TO SECTIONS 28, 29, 32, AND 33 BEING MONUMENTED WITH A 3" ALUMINUM CAP STAMPED "PLS 38256", FROM WHICH A YELLOW PLASTIC CAP STAMPED "PLS 37909", BEARS N89°58'59"E, A DISTANCE OF 861.03 FEET.

COMMENCING AT THE AFORESAID YELLOW PLASTIC CAP; THENCE N09°06'45"E A DISTANCE OF 145.85 FEET; THENCE N00°59'19"E A DISTANCE OF 325.07 FEET; THENCE N01°07'15"W A DISTANCE OF 804.53 FEET TO THE SOUTHERLY LINE OF THE FORMER CHICAGO, ROCK ISLAND, AND PACIFIC RAILROAD AS RECORDED UNDER RECEPTION NO. 215057836 IN THE RECORDS OF EL PASO COUNTY, COLORADO; THENCE 69.44 FEET ON THE ARC OF A NON-TANGENT CURVE TO THE RIGHT ON SAID SOUTHERLY LINE, SAID CURVE HAVING A RADIUS OF 1795.32 FEET, AND A CENTRAL ANGLE OF 20°43'34" (THE CHORD OF WHICH BEARS N75°36'49"E, 645.91 FEET); THENCE S00°13'52"W A DISTANCE OF 1455.11 FEET TO THE AFORESAID SOUTH LINE OF SECTION 28; THENCE N89°57'07"W ALONG SAID SOUTH LINE A DISTANCE OF 626.77 FEET TO THE POINT OF BEGINNING;

SAID PARCEL CONTAINS A CALCULATED AREA OF 843,414 S.F. (19.362 ACRES MORE OR LESS).

### NOTES:

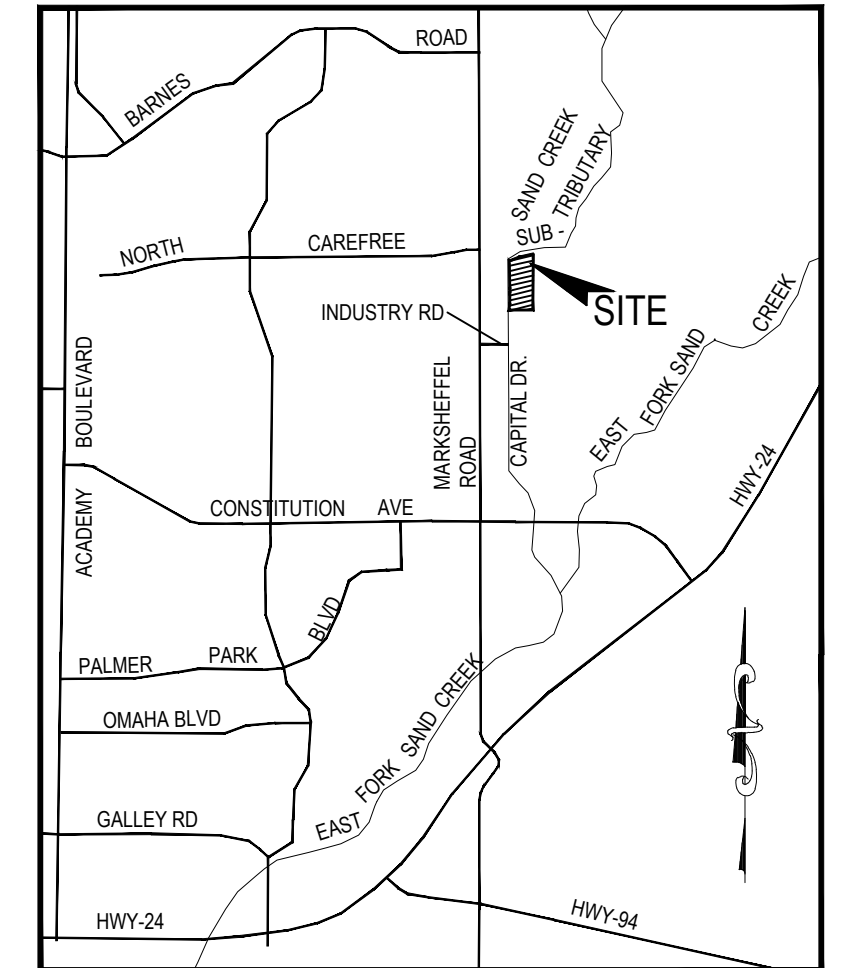
**PUBLIC IMPROVEMENTS:**  
 INCLUDING ALL INGRESS/EGRESS ACCESSES, ROADWAY IMPROVEMENTS ALONG FRONTAGE AND UTILITIES.

**MAINTENANCE:**  
 TO BE OWNED AND MAINTAINED BY THE OWNER.

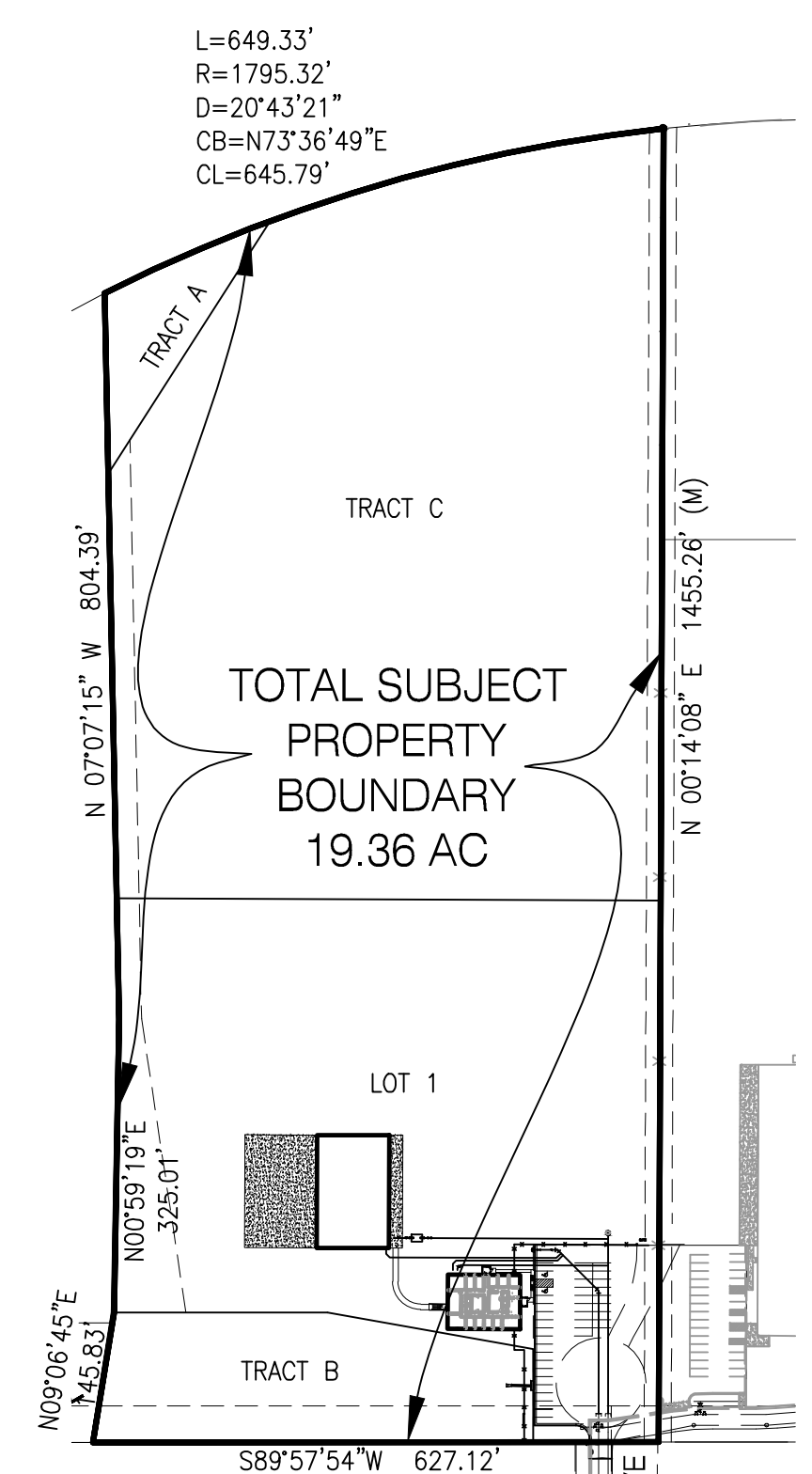
**NOTES:**  
 1. ACCORDING TO THE FEDERAL EMERGENCY MANAGEMENT AGENCY (FEMA) FLOOD INSURANCE RATE MAP (FIRM) PANEL NO. 08041C0543 G, EFFECTIVE DATE DECEMBER 7, 2018. A PORTION OF THIS PROPERTY IS WITHIN AN ZONE AE AS IDENTIFIED IN THE FEMA FLOODPLAIN MAP.

2. ALL CONSTRUCTION TRAFFIC SHALL ENTER AND EXIT FOR THIS PROJECT VIA CAPITAL DRIVE. NO DIRECT ACCESS TO MARKSHEFFEL ROAD.

3. IF USE OF EQUIPMENT (PERMANENT OR TEMPORARY) WILL EXCEED 200 FEET ABOVE GROUND LEVEL IN HEIGHT AT THIS SITE, THE APPLICANT IS TO FILE AN AIRSPACE EVALUATION CASE WITH THE FEDERAL AVIATION ADMINISTRATION (FAA) AND PROVIDE THE RESULTS TO THE AIRPORT BEFORE THE COMMENCEMENT OF CONSTRUCTION ACTIVITIES. MORE INFORMATION ABOUT THE AIRSPACE EVALUATION SUBMITTAL PROCESS IS AVAILABLE ON THE FAA'S OBSTRUCTION EVALUATION/AIRPORT AIRSPACE ANALYSIS WEBSITE (<https://oeaaa.faa.gov/oeaaa/external/portal.jsp>)



VICINITY MAP  
 N.T.S.



AREA MAP  
 1"=200'

40' RESERVED R.O.W. FOR ROADWAY & UTILITY PURPOSES (BOOK 2722, PAGE 87) (BOOK 2936, PAGE 973) (BOOK 3034, PAGE 700) (BOOK 3167, PAGE 433) (BOOK 3552, PAGE 190) (BOOK 3552, PAGE 192)

LOT 7 MARKSHEFFEL INDUSTRIAL PARK SCHEDULE No. 5333201007 ZONING: I-3 (COUNTY) NOT A PART

SITE MAP  
 1"=50'

40' RESERVED R.O.W. FOR ROADWAY & UTILITY PURPOSES (BOOK 3062, PAGE 868) (BOOK 3505, PAGE 14) (BOOK 3552, PAGE 192) (BOOK 3559, PAGE 817)

EX TYPE C CURB

UNPLATTED SCHEDULE No. 5300000190 ZONING: M-1 (CITY) NOT A PART

COVER SHEET - SITE PLAN  
 DWIRE YARD  
 JOB NO. 43-117  
 DATE PREPARED: JANUARY 24, 2020  
 DATE REVISED: NOVEMBER 19, 2020



102 E. PIKES PEAK AVE. STE. 500  
 COLORADO SPRINGS,  
 COLORADO 80903  
 719.955.5485

Ground Cover Legend		APPROX. SF
	Cascado Mulch	2,653 SF
	2-4\"/>	650 SF
	Native Seed Mix: refer to notes	98,747 SF

NOTE: QUANTITIES SHOWN IN LEGEND ARE FOR CONVENIENCE ONLY. CONTRACTOR IS RESPONSIBLE FOR INSTALLING ALL MATERIALS PER PLAN. VERIFY ROCK TYPE, COLOR AND SIZE WITH OWNER PRIOR TO INSTALLATION. SUBMIT SAMPLES TO OWNER AS REQUIRED.

PLANT SCHEDULE					
Sym.	Abbr.	Qty.	Botanical Name	Common Name	Planting Size
<b>DECIDUOUS TREES</b>					
CM	2	Acer barbatum 'Cocco'	Caddo Maple	1.5"	
SSB	3	Amelanchier canadensis	Shadblow Serviceberry	6-7" MS	
<b>EVERGREEN TREES</b>					
VP	2	Pinus flexilis 'Vanderhof's Pyramid'	Vanderwolf Pine	8'-0"	
PP	3	Pinus ponderosa	Ponderosa Pine	6'-0"	
<b>DECIDUOUS SHRUBS</b>					
BMS	10	Corylopsis x alatanensis	Blue Mist Spirea	#5	
JP	6	Potentilla fruticosa 'Jackman'	Jackman Potentilla	#5	
PESC	6	Prunus besseyi 'Pawnee Buttes'	Pawnee Buttes Sand Cherry	#5	
<b>ORNAMENTAL GRASS</b>					
KIG	23	Calamagrostis x acutiflora 'Karl Foerster'	Karl Foerster Grass	#1	

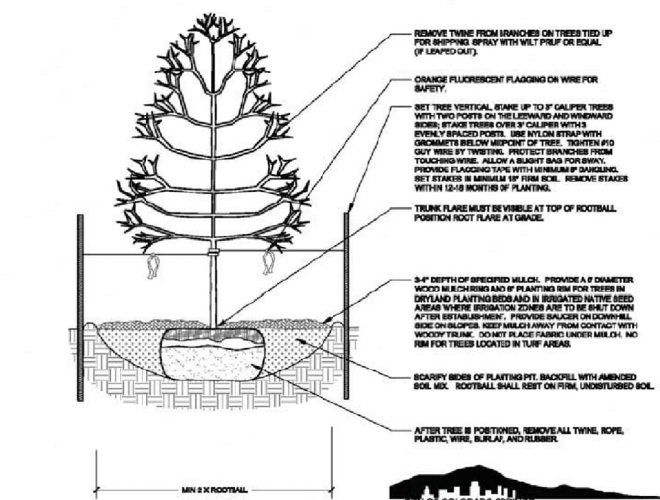
## IRRIGATION SYSTEM NOTE

IRRIGATION SYSTEM TO BE DESIGN/BUILD FOR ALL PLANTING AREAS WITH DRIP FOR ALL PLANTS. COORDINATE WITH GENERAL CONTRACTOR AND OWNER.

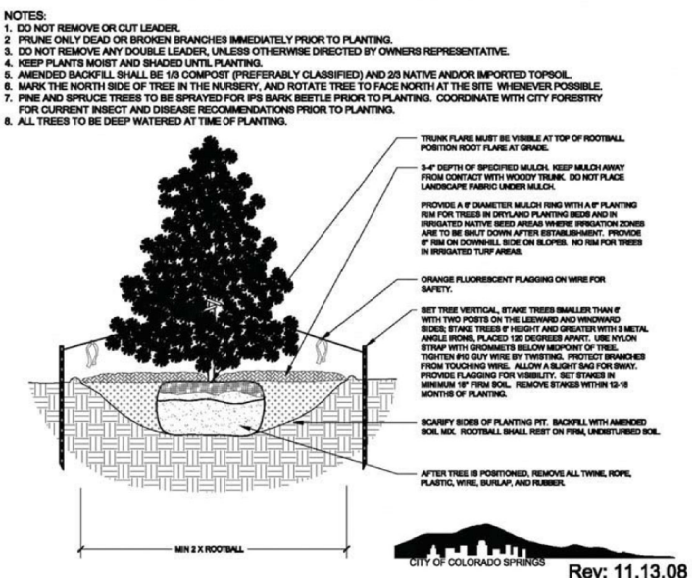
## LAYOUT NOTES

CONTRACTOR IS RESPONSIBLE FOR INSTALLING ALL LANDSCAPE SHOWN ON THIS PLAN. ANY DEVIATIONS FROM THIS PLAN ARE TO BE APPROVED BY OWNERS REPRESENTATIVE. DEVIATIONS FROM THE APPROVED PLAN WILL REQUIRE APPROVAL BY EL PASO COUNTY AND OWNER REPRESENTATIVE.

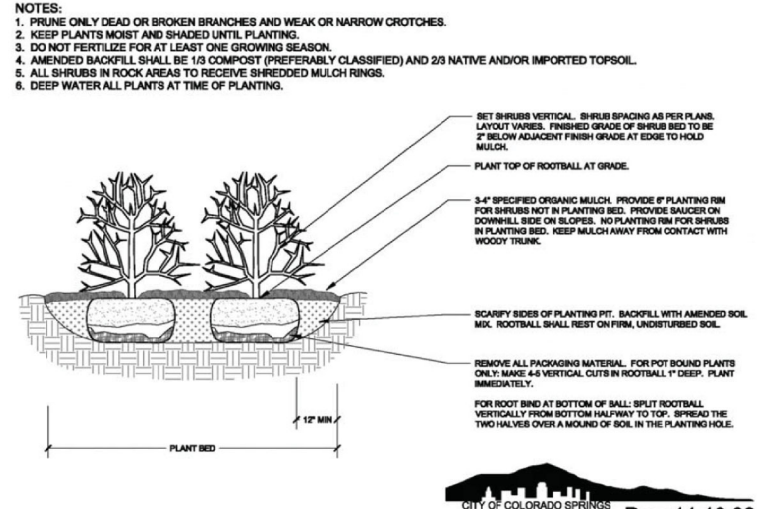
- NOTES:
1. MARK THE NORTH SIDE OF TREE IN THE NURSERY, AND ROTATE TREE TO FACE NORTH AT THE SITE. (WHENEVER POSSIBLE)
  2. AT TIME OF PLANTING, DO NOT REMOVE OR CUT LEADERS AND PRUNE ONLY Y-DIALS OR BRANCHES BRANCHED CROSS OVER BRANCHES, AND HEAVY OR HANGING CROCHETS. SOME VITICULUS TREES HAVE LATERAL BRANCHES THAT ARE PRUNED. HOWEVER DO NOT REMOVE THE TERMINAL LEAF OF BRANCHES THAT EXTENDS TO THE EDGE OF THE CROWN.
  3. STRUCTURAL BRACING SHOULD NOT BEGAIN UNTIL AFTER SETTLEMENT PERIOD, USUALLY TWO GROWING SEASONS.
  4. KEEP PLANTS MOIST AND SHADDED UNTIL PLANTING.
  5. DO NOT FERTILIZE FOR AT LEAST ONE GROWING SEASON.
  6. AMENDED BACKFILL SHALL BE 10 COMPOST (PREFERENTIALLY CLASSIFIED) AND 20 NATIVE AND/OR IMPORTED TOPSOIL.
  7. WRAP TRUNK ON EXPOSED SIDES AND SPACES WITH TRUNK BARK. USE ELECTRICAL OR DUCT TAPE, NOT TRAP.
  8. COORDINATE WITH CITY FORESTRY FOR CURRENT TREES AND SHRUBS RECOMMENDATION PRIOR TO PLANTING.
  9. KEEP WATER ALL PLANTS AT TIME OF PLANTING.



**A** DECIDUOUS TREE PLANTING DETAIL SECTION  
NOT TO SCALE



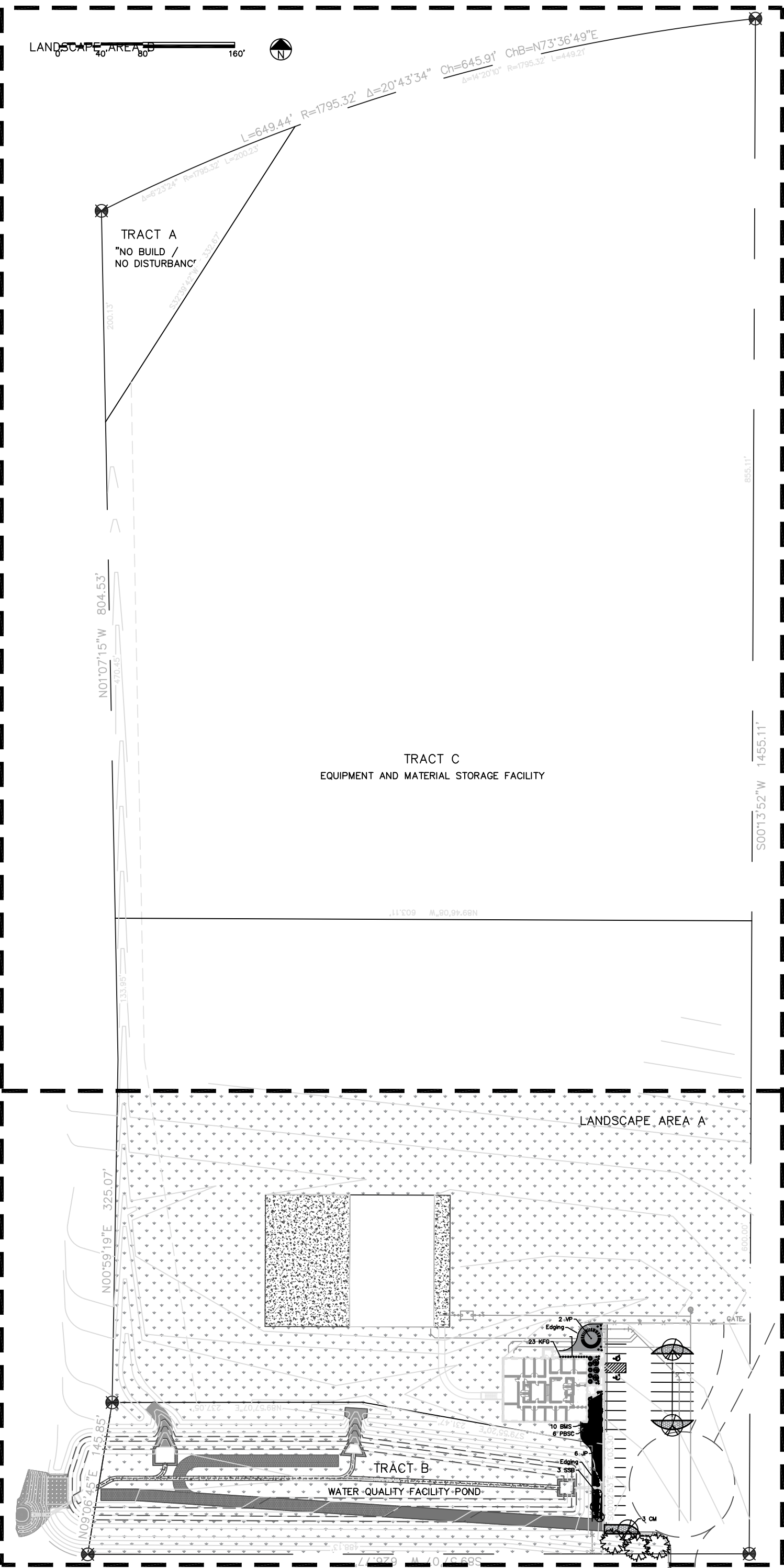
**B** EVERGREEN TREE PLANTING DETAIL SECTION  
NOT TO SCALE



**C** SHRUB PLANTING DETAIL SECTION  
NOT TO SCALE

## GENERAL SITE NOTES

1. CONTRACTOR RESPONSIBLE FOR COORDINATING AND INSTALLING ALL SLEEVING REQUIRED FOR SITE CONSTRUCTION INCLUDING BUT NOT LIMITED TO DRAINAGE, IRRIGATION, LIGHTING, AND ELECTRICAL. COORDINATE WITH GENERAL CONTRACTOR. ALL PLANTING AREAS SHALL BE SLEEVED (CL200 PVC) FOR DRIP IRRIGATION.
2. THE CONTRACTOR IS RESPONSIBLE FOR VERIFYING LOCATION AND DEPTH OF ALL UNDERGROUND UTILITIES PRIOR TO START OF WORK.
3. THE CONTRACTOR SHALL BE RESPONSIBLE FOR OBTAINING ALL NECESSARY PERMITS FOR ALL APPLICABLE AGENCIES.
4. THE CONTRACTOR SHALL BE RESPONSIBLE FOR KEEPING ROADWAYS FREE AND CLEAR OF ALL CONSTRUCTION DEBRIS TRACKED FROM THE SITE.
5. LANDSCAPE CONTRACTOR IS RESPONSIBLE FOR MAINTAINING THE SITE DURING CONSTRUCTION.
6. EXISTING TOPSOIL TO BE STOCKPILED ON-SITE AND USED DURING CONSTRUCTION TO ESTABLISH GRADES WITHIN LANDSCAPE AREAS AS SHOWN PER PLAN.
7. CONTRACTOR SHALL REFER TO ASSOCIATED LANDSCAPE CONTRACTORS OF COLORADO HANDBOOK (ALCC), 2007 REVISED EDITION FOR ALL CONSTRUCTION FOR THIS SITE.
8. QUANTITIES SHOWN IN PLANT SCHEDULE ARE FOR CONVENIENCE ONLY. CONTRACTOR IS RESPONSIBLE FOR INSTALLING ALL PLANT MATERIAL PER PLAN.
9. GROUND COVER SHALL BE CONTINUOUS UNDER ALL SHRUBS THROUGHOUT SITE.
10. PLANT BACKFILL SHALL BE 70% NATIVE ON-SITE SOIL, AND 30% BREW-GRO BIOCOMP CLASS 1 COMPOST.
11. PRIOR TO INSTALLING PLANTS IN PLANTING BEDS, BROADCAST PREEN PLANT SAFE PRE-EMERGENT WEED CONTROL IN ALL PLANTING AREAS PER MANUFACTURE RECOMMENDATIONS.
12. STEEL EDGING TO BE ROLL-TOP GALVANIZED (3/8"x4"x10') WITH SPINS (4 PER SECTION).
13. NATIVE SEED MIX TO BE LOW-GROW NATIVE SEED FROM BUFFALO BRAND SEED APPLIED AT 2LBS PER 1000SF.
14. SEED TO BE INSTALLED IN AREAS AROUND CONSTRUCTION WHERE SITE HAS BEEN DISTURBED
15. FOR HYDRO-SEEDING: ALL SEEDED AREAS SHALL RECEIVE NOT LESS THAN 1 TON PER ACRE (2000LBS) OF VIRGIN WOOD CELLULOSE HYDRO-MULCH AND 100 LBS PER ACRE OF ORGANIC TACKIFIER.
16. DRILL SEEDING: SEEDING EQUIPMENT USED APPLYING SEED MIXTURES SHALL BE DESIGNED, MODIFIED OR EQUIPPED TO REGULATE THE APPLICATION RATE AND PLANTING DEPTH OF THE SEED MIXTURE. SEED SHALL BE UNIFORMLY DISTRIBUTED IN THE DRILL HOPPER DURING THE DRILLING OPERATION. A RANGELAND DRILL CAPABLE OF MIXING DIFFERENT SIZES AND WEIGHTS OF SEEDS SHALL BE USED, THE DRILL SHALL BE EQUIPPED WITH DOUBLE DISK FURROW OPENERS, DEPTH BANDS, PRESS WHEELS OR DRAG CHAINS.
17. THE SEED SHALL BE DRILLED APPROXIMATELY 1/2" BELOW THE SOIL SURFACE. HALF OF THE TOTAL RATE OF SEED APPLICATION SHALL BE DRILLED IN 1 DIRECTION, WITH THE REMAINDER OF THE SEED RATE DRILLED AT 90 DEGREES FROM THE FIRST DIRECTION. DO NOT DRILL OR SOW SEED DURING HIGH WINDS OR WHEN THE GROUND IS FROZEN OR OTHERWISE UNABLE TO BE WORKED.
18. ALL SEEDED AREAS LESS THAN 3:1 SHALL RECEIVE NO LESS THAN 2 TONS PER ACRE (4000LBS) OF CERTIFIED WEED FREE STRAW MULCH. STRAW MULCH SHALL BE APPLIED IN A UNIFORM MANNER BY MULCH SPREADER OR BY HAND. STRAW MULCH SHALL BE CRIMPED OR ANCHORED INTO THE SEEDBED IMMEDIATELY FOLLOWING SPREADING BY USING A MULCH TILLER (CRIMPER). MULCH SHALL BE APPLIED TO SEEDED AREAS (INCLUDING DAMP GROUND) WITHIN 24 HOURS FOLLOWING THE COMPLETION OF SEEDING OPERATIONS FOR THE AREA.



Designed by: Elysa Matthews  
Date: 11.24.2020  
Revised:  
Scale:

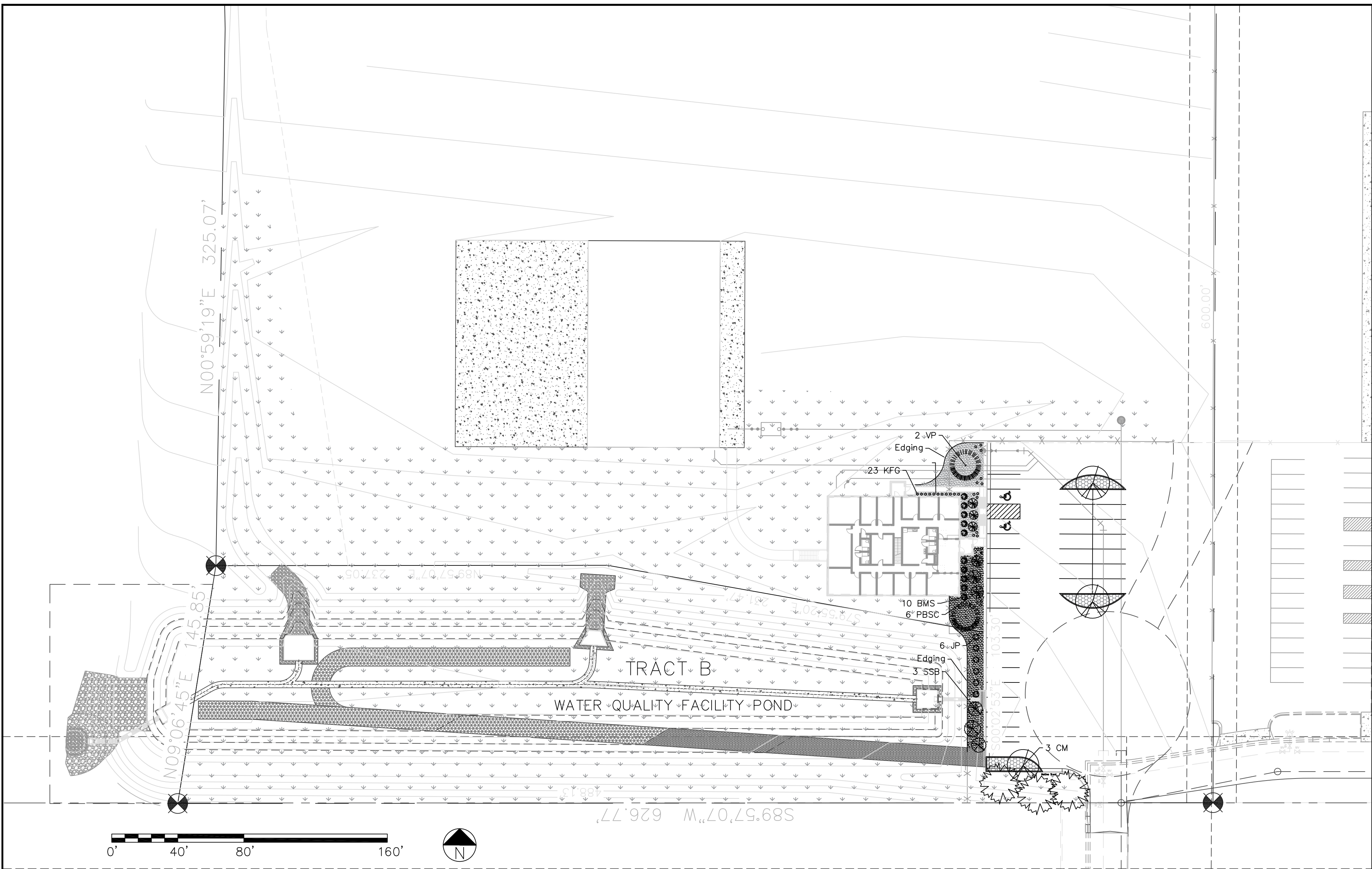
Dwire Earthmoving Inc.  
Colorado Springs, Colorado 80939

**TIMBERLINE Landscaping**  
A TIMBERLINEONE Company  
8110 Opportunity View  
Colorado Springs, CO 80939  
(719) 638-1000 fax (719) 638-1010

Designed by: Elysa Matthews  
 Date: 11.24.2020  
 Revised:  
 Scale:

Dwire Earthmoving Inc.  
 Colorado Springs, Colorado 80939

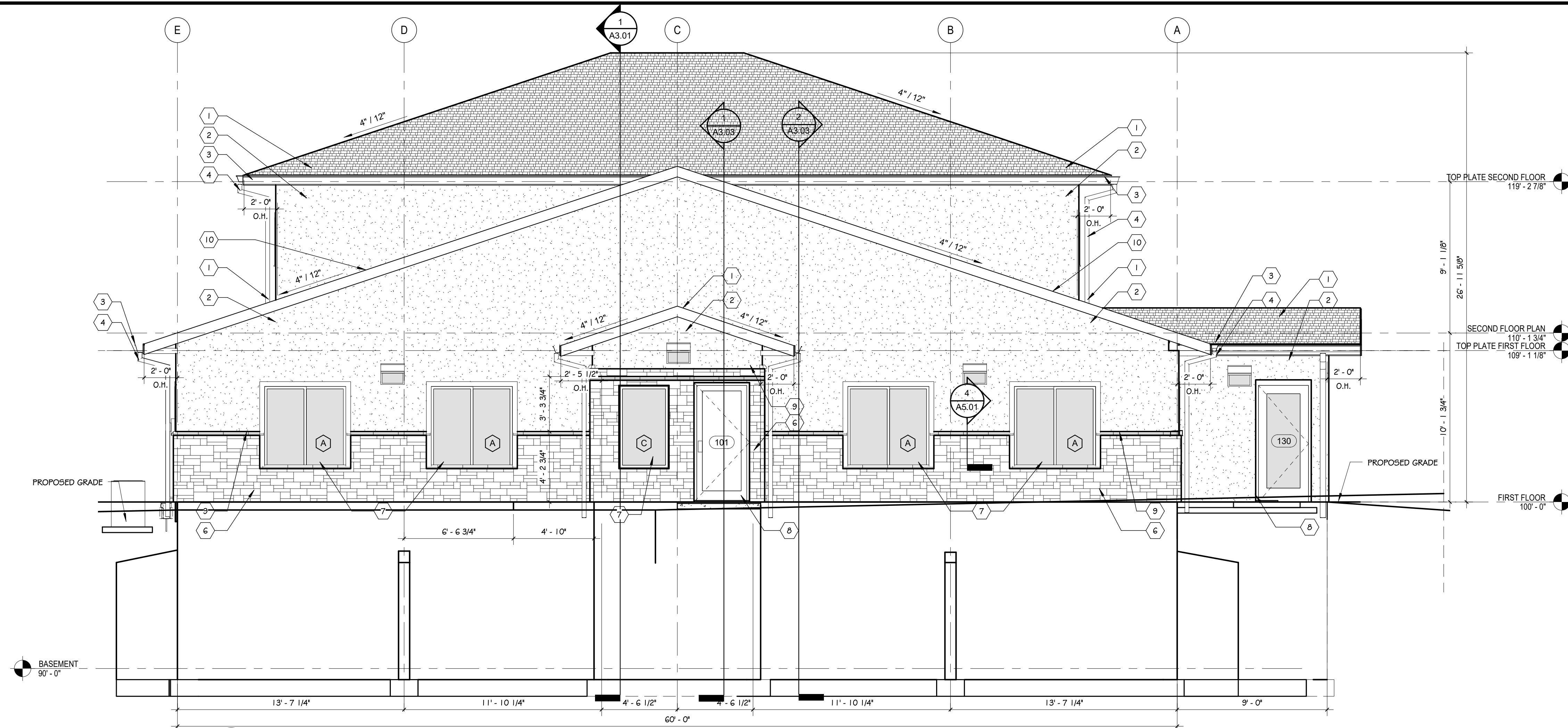
**TIMBERLINE**  
**Landscaping**  
 A TIMBERLINEONE Company  
 8110 Opportunity View  
 Colorado Springs, CO 80939  
 (719) 638-1000 fax (719) 638-1010



Sym.	Abbr.	Qty.	Botanical Name	Common Name	Planting Size
<b>PLANT SCHEDULE</b>					
<b>DECIDUOUS TREES</b>					
CM	2	Acer barbatum 'Caddo'	Caddo Maple	1.5"	
SSB	3	Amelanchier canadensis	Shadblow Serviceberry	6-7' MS	
<b>EVERGREEN TREES</b>					
VP	2	Pinus flexilis 'Vanderolf's Pyramid'	Vanderwolf Pine	8'-0"	
PP	3	Pinus ponderosa	Ponderosa Pine	6'-0"	
<b>DECIDUOUS SHRUBS</b>					
BMS	10	Caryopteris x clandonensis	Blue Mist Spirea	#5	
JP	6	Potentilla fruticosa 'Jackmanii'	Jackman Potentilla	#5	
PBSC	6	Prunus besseyi 'Pawnee Buttes'	Pawnee Buttes Sand Cherry	#5	
<b>ORNAMENTAL GRASS</b>					
KFG	23	Calamagrostis x acutiflora 'Karl Foerster'	Karl Foerster Grass	#1	

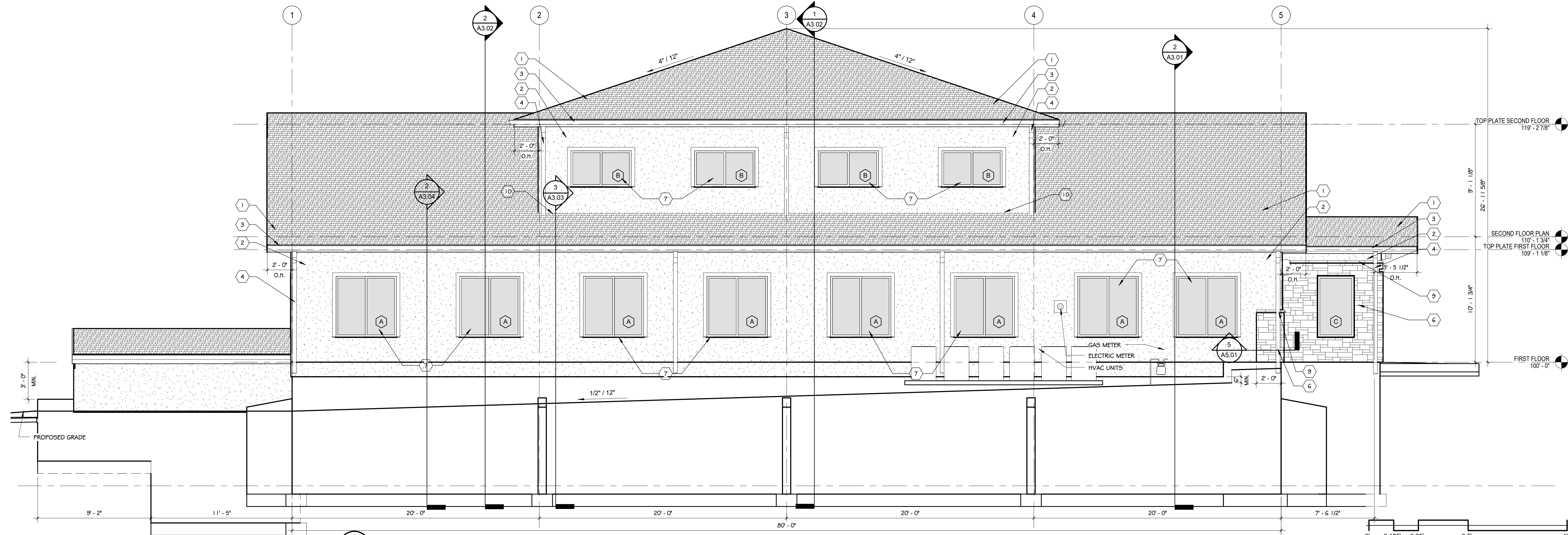
SYMBOL	DESCRIPTION	APPROX. SF
	Cascade Mulch	2,653 SF
	2-4" Cobble	650 SF
	Native Seed Mix: refer to notes	98,747 SF

NOTE: QUANTITIES SHOWN IN LEGEND ARE FOR CONVENIENCE ONLY. CONTRACTOR IS RESPONSIBLE FOR INSTALLING ALL MATERIALS PER PLAN. VERIFY ROCK TYPE, COLOR AND SIZE WITH OWNER PRIOR TO INSTALLATION. SUBMIT SAMPLES TO OWNER AS REQUIRED.

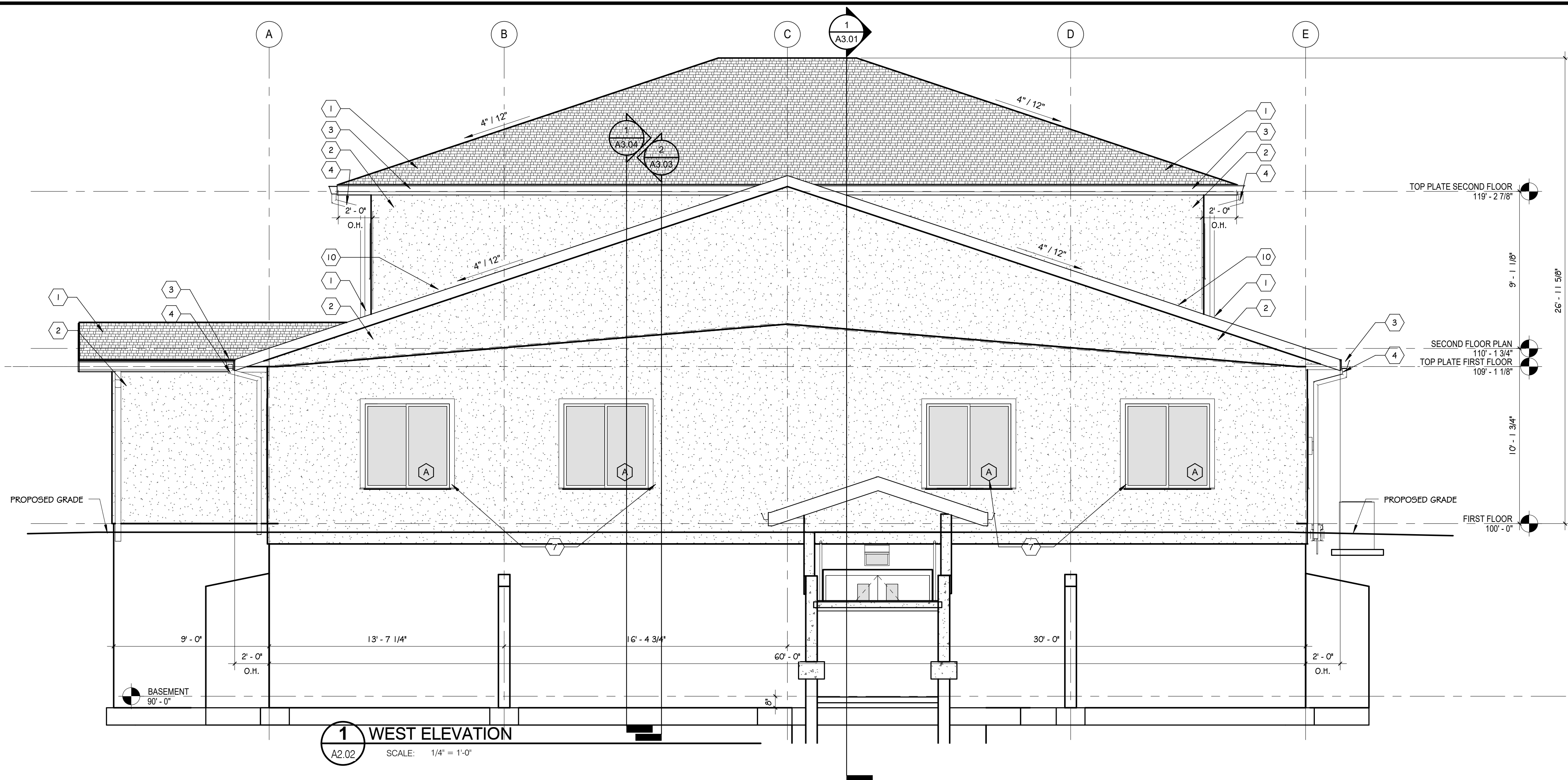


**1 EAST ELEVATION**  
A2.01 SCALE: 1/4" = 1'-0"

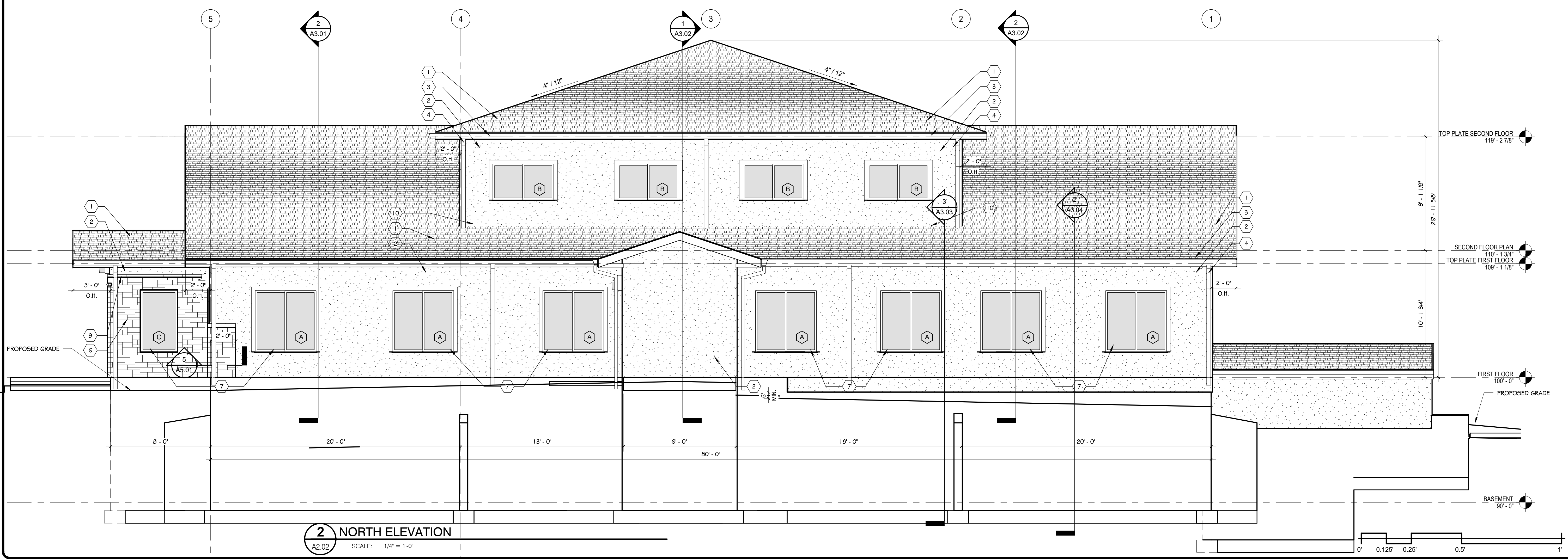
EXTERIOR FINISH COLOR SCHEDULE		
MK	MATERIAL	COLOR
1	ASPHALT SHINGLE ROOF	STANDARD-TBD
2	STUCCO WALLS	STANDARD-TBD
3	PRE FINISHED GUTTERS	STANDARD-TBD
4	PRE FINISHED DOWNSPOUTS	STANDARD-TBD
5	PRE-PRIMED 5/4 MASONITE FACIA TRIM	PAINTED STANDARD-TBD
6	SYNTHETIC STONE	STANDARD-TBD
7	WINDOWS	INSULATED, CLEAR, LOW E
8	DOORS AND METAL FRAMES	STANDARD-TBD
9	STONE SILL	STANDARD-TBD
10	FLASHING	STANDARD-TBD



**2 SOUTH ELEVATION**  
A2.01 SCALE: 1/4" = 1'-0"



EXTERIOR FINISH COLOR SCHEDULE		
MK	MATERIAL	COLOR
1	ASPHALT SHINGLE ROOF	STANDARD-TBD
2	STUCCO WALLS	STANDARD-TBD
3	PRE FINISHED GUTTERS	STANDARD-TBD
4	PRE FINISHED DOWNSPOUTS	STANDARD-TBD
5	PRE-PRIMED 5/4 MASONITE FACIA TRIM	PAINTED STANDARD-TBD
6	SYNTHETIC STONE	STANDARD-TBD
7	WINDOWS	INSULATED, CLEAR, LOW E
8	DOORS AND METAL FRAMES	STANDARD-TBD
9	STONE SILL	STANDARD-TBD
10	FLASHING	STANDARD-TBD



**ROCKY MOUNTAIN GROUP**  
 ENGINEERS ARCHITECTS  
 GEOMETRICAL SURVEYING CIVIL PLANNING  
**RMG**  
 ARCHITECTURAL ENGINEERING PROFESSIONALS  
 800 SOUTH MAIN STREET SUITE 3000  
 DENVER, COLORADO 80202  
 19375 BLAZON LANE, HOUSTON, TEXAS 77058  
 (719) 488-2145 - WWW.RMGENGINEERS.COM  
 SOUTHERN COLORADO ENGINEERING, DENVER, COLORADO

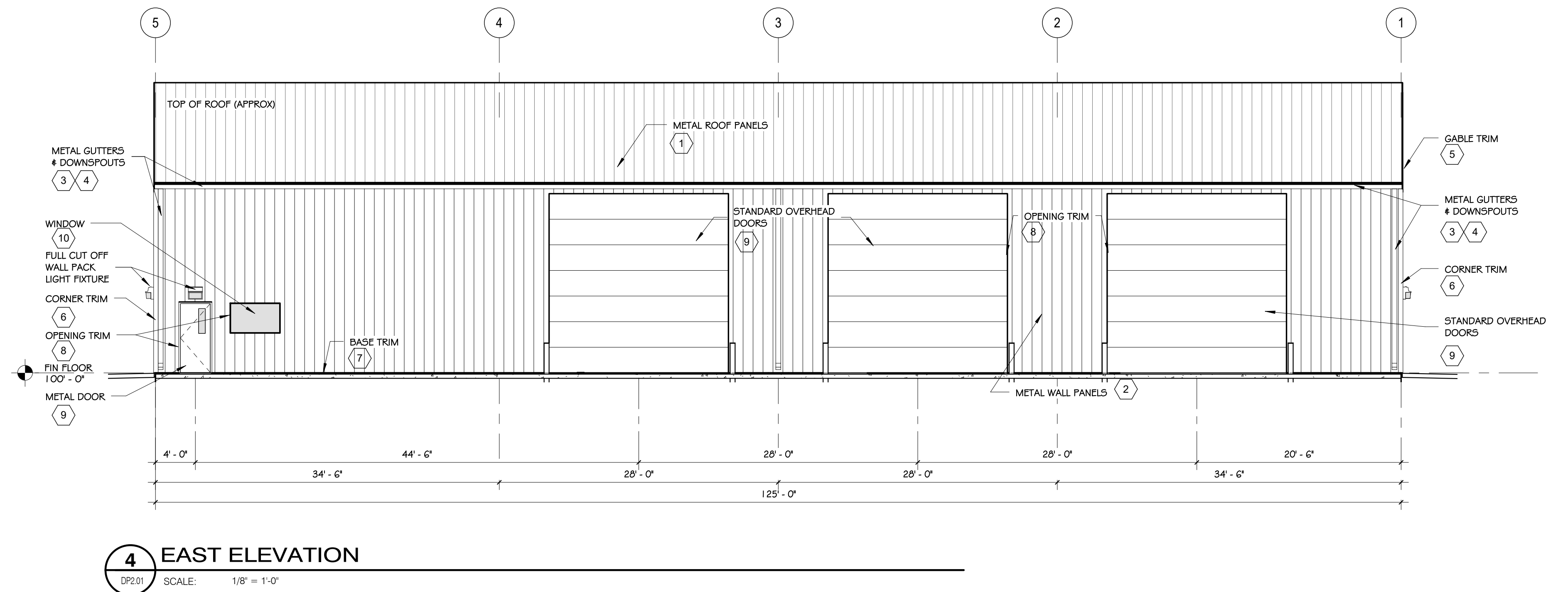
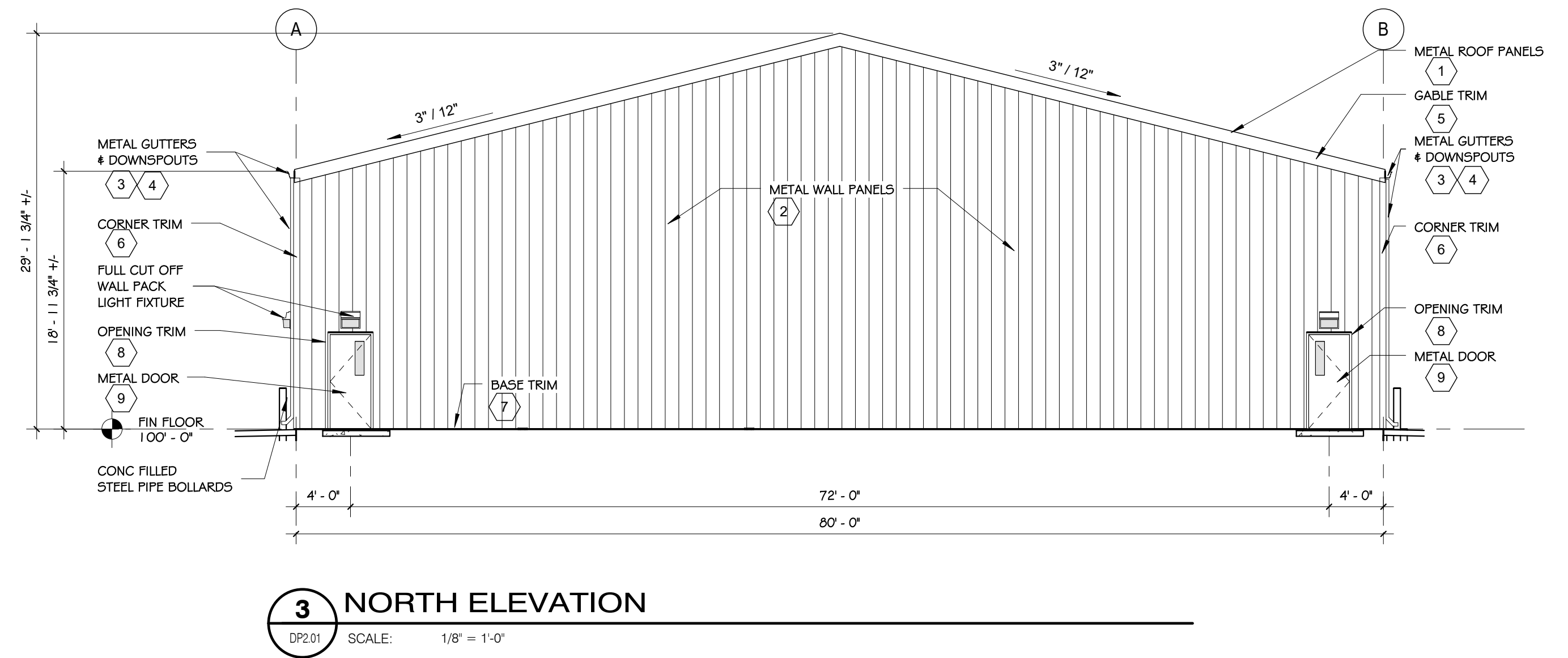
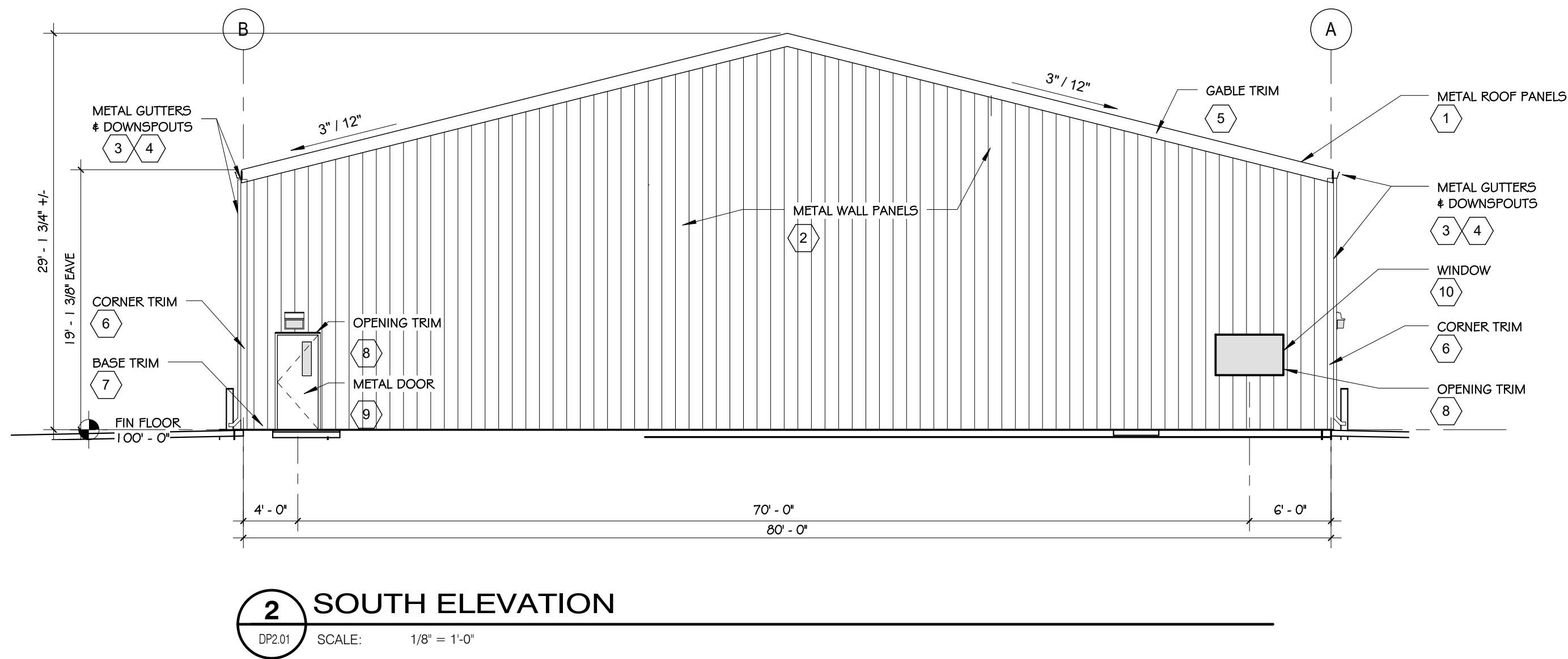
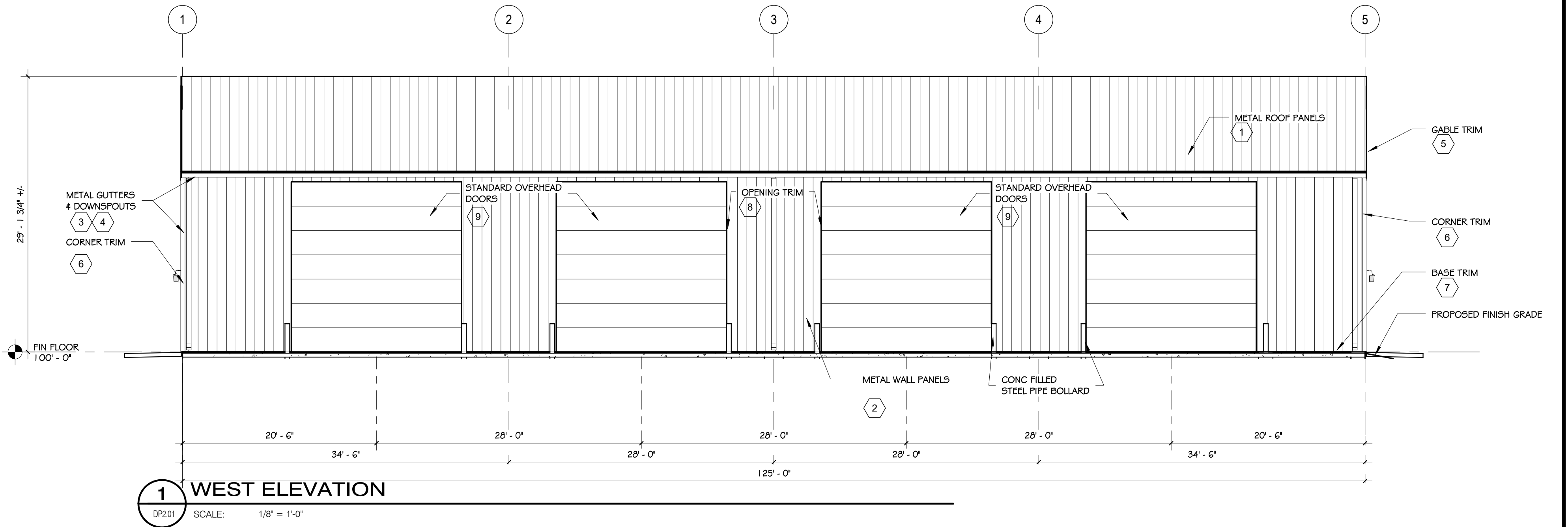
**DWIRE OFFICE BUILDING**  
 3500 CAPITAL DRIVE, COLORADO SPRINGS, COLORADO 80939  
**DWIRE EARTH MOVING LLC**

PROJECT STATUS  
**DESIGN DEVELOPMENT**

SHEET NAME  
**EXTERIOR ELEVATIONS**

ARCHENGE: KEM  
 DRAWN: JJD  
 CHECKED: km  
 DATE: 06.12.19  
 REVISION DATE  
 JOB NO: 168498  
 SHEET NO: A2.02

EXTERIOR FINISH COLOR SCHEDULE		
MK	MATERIAL	COLOR
1	ROOF PANELS	TBD
2	WALL PANEL	TBD
3	GUTTERS	TBD
4	DOWNSPOUTS	TBD
5	GABLE TRIM	TBD
6	CORNER TRIM	TBD
7	BASE TRIM	TBD
8	OPENING TRIM	TBD
9	DOORS	TBD
10	WINDOWS	TBD



CALCULATION ZONE STATISTICS						
DESCRIPTION	SYMBOL (fc)	AVERAGE (fc)	MAXIMUM (fc)	MINIMUM (fc)	MAX./MIN. (fc)	AVG./MIN. (fc)
PARKING LOT	+	1.1	7.0	0.0	N/A	N/A
BLDG. PARAMETER	+	1.5	10.0	0.0	N/A	N/A
SURROUNDING AREA	+	0.1	2.9	0.0	N/A	N/A

LIGHT FIXTURE SCHEDULE										
MARK	MANUFACTURER	MODEL	LAMP			MOUNTING	DESCRIPTION	VOLTAGE	TOTAL WATTS	NOTES
			QTY.	WATT	TYPE					
P1	LITHONIA	DSX0 LED P3 40K T4M MVOLT HS	1	71	LED	POLE @ 20'	AREA LIGHT FIXTURE	120	71	1
P2	LITHONIA	DSX0 LED P3 40K T4M MVOLT	2	71	LED	POLE @ 20'	AREA LIGHT FIXTURE	120	142	1
WP1	LITHONIA	DSXW1 LED 20C 700 40K T4M MVOLT	1	45.7	LED	SURFACE	WALLPACK	120	45.7	1
WP2	LITHONIA	OLW14	1	18	LED	SURFACE	WALLPACK	120	18	1

NOTES:  
1) CONFIRM ALL LIGHT FIXTURE SELECTIONS WITH TENANT PRIOR TO ORDERING. THIS INCLUDES COLORS, COLOR TEMPERATURES, MANUFACTURER, ETC.

CLIENT:  
ARCHITECT:

**McShea Consulting, LLC**  
MECHANICAL + ELECTRICAL + PLUMBING  
4445 Northpark Dr. Suite 200  
Colorado Springs, CO 80907  
mcsheac consulting.com  
Project #: 19-1433



11.04.19

**OWNERSHIP OF INSTRUMENTS OF SERVICE**

All Drawings, Reports, Plans, Specifications, Computer Files (including CAD files), field information, notes, sketches, and other design materials prepared by the Engineer and his/her consultants as instruments of service shall remain the property of the Engineer. The Engineer shall retain all common law, statutory and other reserved rights, including the Copyright therein.

**DWIRE YARD  
SITE PHOTOMETRIC PLAN**

**FULL SET ISSUE HISTORY:**

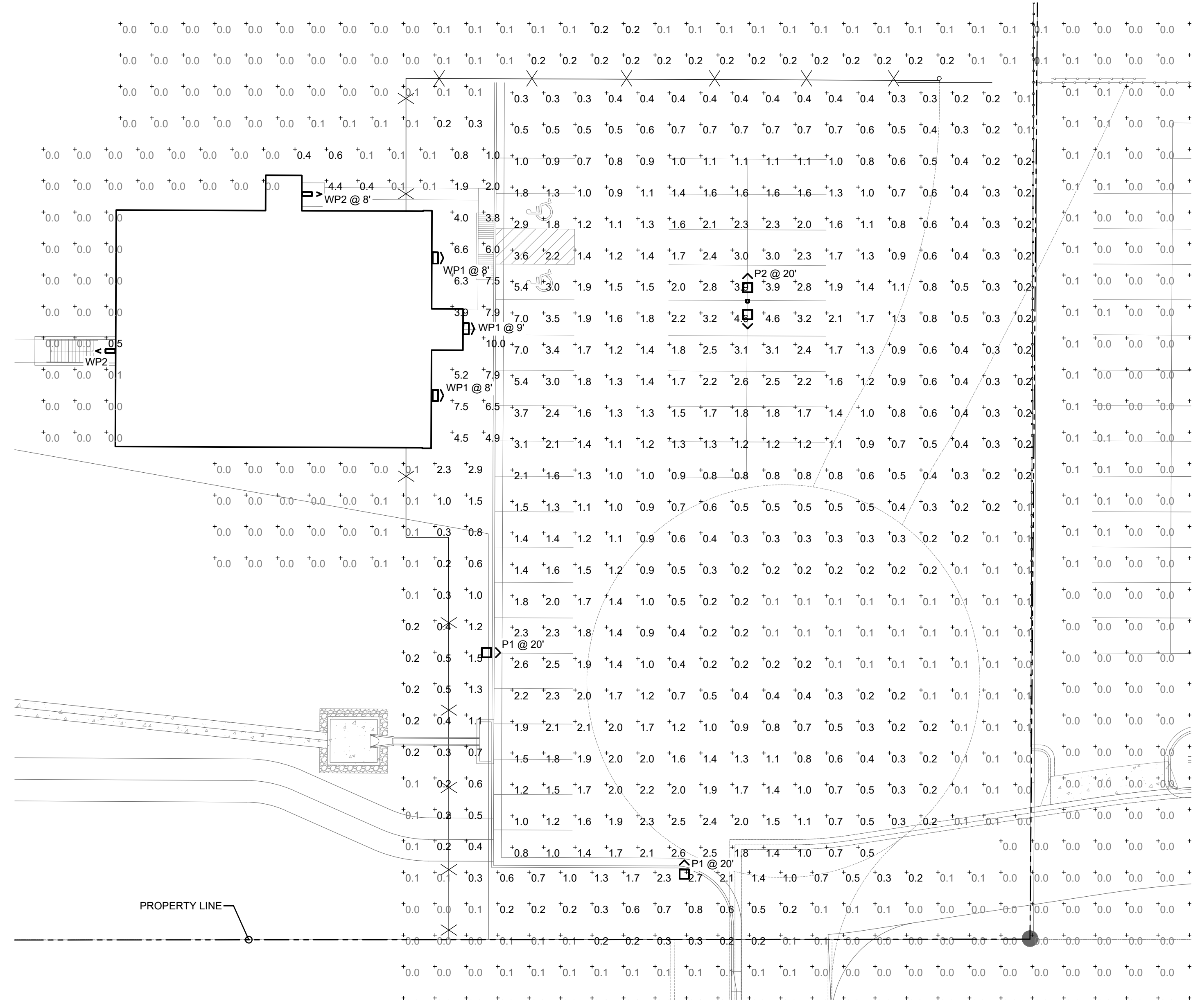
1	ISSUE FOR PERMIT	11.04.19
---	------------------	----------

**SHEET REVISION:**


PROJECT #: 19-1433  
DRAWN BY: CCF  
CHECKED BY: MRM

SHEET

**ES0.1**



**LITHONIA LIGHTING**

**FEATURES & SPECIFICATIONS**

**INTRODUCTION**  
Provides illumination for general applications in commercial applications such as parking lots, walkways, entryways, and more. Ideal for lighting building facades, parking lots, walkways, entryways, and more. Ideal for lighting building facades, parking lots, walkways, entryways, and more. Ideal for lighting building facades, parking lots, walkways, entryways, and more.

**CONSTRUCTION**  
Die-cast aluminum housing with a bronze finish. Standard white aluminum rated. A clear polycarbonate lens protects the optics from moisture, dirt, and other contaminants.

**OPTICS**  
High performance LED are powered by a multi-watt LED (2700K) LED that uses 18 input watts per fixture. 100 lumens per watt. 100000 hour LED lifespan based on IESNA LM-79 test and calculated per IESNA TM-21-11 methodology.

**ELECTRICAL**  
Rated for outdoor installation, 40°C maximum ambient.  
Adjustable back to show, with pre-set standard automatically turns light on at dusk and off at dawn for convenience and energy savings.  
Photocell can be disabled by setting the photocell code: 000.  
All mounting hardware included.  
UL Certified to US and Canadian safety standards. Not suitable for mounting higher than 15 feet off the ground.  
Suitable for installation with EMI/RFI and UL 48-05 standards.

**WARRANTY**  
5-year limited warranty. Complete warranty terms located at [www.lithonia.com](http://www.lithonia.com).  
Actual performance may differ as a result of site environment and application.  
Note: Specifications subject to change without notice.

**OLW14 LED WALL PACK**

**Ordering Information**

Order Code	Color Temperature	Beam Angle	Mounting	Finish	Notes
OLW14	3000K	30°	Standard	Black	Standard Color Temperature 3000K (Warm White)
OLW14	4000K	30°	Standard	Black	Standard Color Temperature 4000K (Neutral White)
OLW14	5000K	30°	Standard	Black	Standard Color Temperature 5000K (Cool White)

**OLW14 LED Wall Pack**

**PHOTOMETRIC DIAGRAMS**

Full photometric data report available within 2 weeks from request. Contact factory. Tested in accordance with IESNA LM-79 and LM-80 standards.

**Lighting Facts**

Light Output (Lumens): 1400  
Power: 17.0W  
Lumens per Watt (lm/W): 82  
Beam Spread: 30°  
Beam Diameter: 6.8"  
Mounting Height: 10.0"  
Viewing Angle: 110°

**LITHONIA LIGHTING**

One Lithonia Way • Corning, Georgia 30512 • Phone: 800.765.7378 • [www.lithonia.com](http://www.lithonia.com)  
© 2017-2019 Andy Beale Lighting, Inc. All rights reserved. ES011

**D-Series Size 1 LED Wall Luminaire**

**INTRODUCTION**  
The D-Series Wall Luminaire is a stylish, fully integrated LED solution for building mount applications. Its features a sleek, modern design and is carefully engineered to provide long-lasting, energy-efficient lighting with a variety of optical and control options for customized performance.

**CONSTRUCTION**  
With an expected service life of over 20 years of nighttime use and up to 74% in energy savings over comparable 250W metal halide luminaires, the D-Series Wall is a reliable, low-maintenance lighting solution that produces sites that are exceptionally illuminated.

**Ordering Information**

Order Code	Color Temperature	Beam Angle	Mounting	Finish	Notes
DSW14	3000K	30°	Standard	Black	Standard Color Temperature 3000K (Warm White)
DSW14	4000K	30°	Standard	Black	Standard Color Temperature 4000K (Neutral White)
DSW14	5000K	30°	Standard	Black	Standard Color Temperature 5000K (Cool White)

**Performance Data**

**Lumen Output**

Order Code	Color Temperature	Beam Angle	Mounting	Finish	Notes
DSW14	3000K	30°	Standard	Black	Standard Color Temperature 3000K (Warm White)
DSW14	4000K	30°	Standard	Black	Standard Color Temperature 4000K (Neutral White)
DSW14	5000K	30°	Standard	Black	Standard Color Temperature 5000K (Cool White)

**PHOTOMETRIC DIAGRAMS**

Full photometric data report available within 2 weeks from request. Contact factory. Tested in accordance with IESNA LM-79 and LM-80 standards.

**Lighting Facts**

Light Output (Lumens): 1400  
Power: 17.0W  
Lumens per Watt (lm/W): 82  
Beam Spread: 30°  
Beam Diameter: 6.8"  
Mounting Height: 10.0"  
Viewing Angle: 110°

**LITHONIA LIGHTING**

One Lithonia Way • Corning, Georgia 30512 • Phone: 800.765.7378 • [www.lithonia.com](http://www.lithonia.com)  
© 2017-2019 Andy Beale Lighting, Inc. All rights reserved. ES011

**D-Series Size 0 LED Area Luminaire**

**INTRODUCTION**  
The modern styling of the D-Series is striking yet unobtrusive - making a bold, progressive statement even as it blends seamlessly with its environment. The D-Series distills the benefits of the latest in LED technology into a high-performance, high-efficiency, long-life luminaire. The outstanding photometric performance results in sites with excellent uniformity, greater pole spacing and lower power density. It is ideal for replacing up to 400W metal halide with typical energy savings of 70% and expected service life of over 100,000 hours.

**Ordering Information**

Order Code	Color Temperature	Beam Angle	Mounting	Finish	Notes
DSX0	3000K	30°	Standard	Black	Standard Color Temperature 3000K (Warm White)
DSX0	4000K	30°	Standard	Black	Standard Color Temperature 4000K (Neutral White)
DSX0	5000K	30°	Standard	Black	Standard Color Temperature 5000K (Cool White)

**Performance Data**

**Lumen Ambient Temperature (LAT) Multipliers**

Order Code	Color Temperature	Beam Angle	Mounting	Finish	Notes
DSX0	3000K	30°	Standard	Black	Standard Color Temperature 3000K (Warm White)
DSX0	4000K	30°	Standard	Black	Standard Color Temperature 4000K (Neutral White)
DSX0	5000K	30°	Standard	Black	Standard Color Temperature 5000K (Cool White)

**PHOTOMETRIC DIAGRAMS**

Full photometric data report available within 2 weeks from request. Contact factory. Tested in accordance with IESNA LM-79 and LM-80 standards.

**Lighting Facts**

Light Output (Lumens): 1400  
Power: 17.0W  
Lumens per Watt (lm/W): 82  
Beam Spread: 30°  
Beam Diameter: 6.8"  
Mounting Height: 10.0"  
Viewing Angle: 110°

**LITHONIA LIGHTING**

One Lithonia Way • Corning, Georgia 30512 • Phone: 800.765.7378 • [www.lithonia.com](http://www.lithonia.com)  
© 2017-2019 Andy Beale Lighting, Inc. All rights reserved. ES011

**Performance Data**

**Lumen Ambient Temperature (LAT) Multipliers**

Order Code	Color Temperature	Beam Angle	Mounting	Finish	Notes
DSX0	3000K	30°	Standard	Black	Standard Color Temperature 3000K (Warm White)
DSX0	4000K	30°	Standard	Black	Standard Color Temperature 4000K (Neutral White)
DSX0	5000K	30°	Standard	Black	Standard Color Temperature 5000K (Cool White)

**PHOTOMETRIC DIAGRAMS**

Full photometric data report available within 2 weeks from request. Contact factory. Tested in accordance with IESNA LM-79 and LM-80 standards.

**Lighting Facts**

Light Output (Lumens): 1400  
Power: 17.0W  
Lumens per Watt (lm/W): 82  
Beam Spread: 30°  
Beam Diameter: 6.8"  
Mounting Height: 10.0"  
Viewing Angle: 110°

**LITHONIA LIGHTING**

One Lithonia Way • Corning, Georgia 30512 • Phone: 800.765.7378 • [www.lithonia.com](http://www.lithonia.com)  
© 2017-2019 Andy Beale Lighting, Inc. All rights reserved. ES011

**CLIENT:**

**ARCHITECT:**

**McShea Consulting, LLC**  
MECHANICAL + ELECTRICAL + PLUMBING  
4445 Northpark Dr., Suite 200  
Colorado Springs, CO 80907  
[mcsheac consulting.com](http://mcsheac consulting.com)  
Project #: 19-1433

**11.04.19**

**OWNERSHIP OF INSTRUMENTS OF SERVICE**

All Drawings, Reports, Plans, Specifications, Computer Files (including CAD files), field information, notes, sketches, and other design materials prepared by the Engineer and his/her consultants as instruments of service shall remain the property of the Engineer. The Engineer shall retain all common law, statutory and other reserved rights, including the Copyright benefits.

**DWIRE YARD**

**SITE PHOTOMETRIC PLAN**

**Performance Data**

**Lumen Ambient Temperature (LAT) Multipliers**

Order Code	Color Temperature	Beam Angle	Mounting	Finish	Notes
DSW14	3000K	30°	Standard	Black	Standard Color Temperature 3000K (Warm White)
DSW14	4000K	30°	Standard	Black	Standard Color Temperature 4000K (Neutral White)
DSW14	5000K	30°	Standard	Black	Standard Color Temperature 5000K (Cool White)

**PHOTOMETRIC DIAGRAMS**

Full photometric data report available within 2 weeks from request. Contact factory. Tested in accordance with IESNA LM-79 and LM-80 standards.

**Lighting Facts**

Light Output (Lumens): 1400  
Power: 17.0W  
Lumens per Watt (lm/W): 82  
Beam Spread: 30°  
Beam Diameter: 6.8"  
Mounting Height: 10.0"  
Viewing Angle: 110°

**LITHONIA LIGHTING**

One Lithonia Way • Corning, Georgia 30512 • Phone: 800.765.7378 • [www.lithonia.com](http://www.lithonia.com)  
© 2017-2019 Andy Beale Lighting, Inc. All rights reserved. ES011

**Performance Data**

**Lumen Ambient Temperature (LAT) Multipliers**

Order Code	Color Temperature	Beam Angle	Mounting	Finish	Notes
DSW14	3000K	30°	Standard	Black	Standard Color Temperature 3000K (Warm White)
DSW14	4000K	30°	Standard	Black	Standard Color Temperature 4000K (Neutral White)
DSW14	5000K	30°	Standard	Black	Standard Color Temperature 5000K (Cool White)

**PHOTOMETRIC DIAGRAMS**

Full photometric data report available within 2 weeks from request. Contact factory. Tested in accordance with IESNA LM-79 and LM-80 standards.

**Lighting Facts**

Light Output (Lumens): 1400  
Power: 17.0W  
Lumens per Watt (lm/W): 82  
Beam Spread: 30°  
Beam Diameter: 6.8"  
Mounting Height: 10.0"  
Viewing Angle: 110°

**LITHONIA LIGHTING**

One Lithonia Way • Corning, Georgia 30512 • Phone: 800.765.7378 • [www.lithonia.com](http://www.lithonia.com)  
© 2017-2019 Andy Beale Lighting, Inc. All rights reserved. ES011

**Performance Data**

**Lumen Ambient Temperature (LAT) Multipliers**

Order Code	Color Temperature	Beam Angle	Mounting	Finish	Notes
DSX0	3000K	30°	Standard	Black	Standard Color Temperature 3000K (Warm White)
DSX0	4000K	30°	Standard	Black	Standard Color Temperature 4000K (Neutral White)
DSX0	5000K	30°	Standard	Black	Standard Color Temperature 5000K (Cool White)

**PHOTOMETRIC DIAGRAMS**

Full photometric data report available within 2 weeks from request. Contact factory. Tested in accordance with IESNA LM-79 and LM-80 standards.

**Lighting Facts**

Light Output (Lumens): 1400  
Power: 17.0W  
Lumens per Watt (lm/W): 82  
Beam Spread: 30°  
Beam Diameter: 6.8"  
Mounting Height: 10.0"  
Viewing Angle: 110°

**LITHONIA LIGHTING**

One Lithonia Way • Corning, Georgia 30512 • Phone: 800.765.7378 • [www.lithonia.com](http://www.lithonia.com)  
© 2017-2019 Andy Beale Lighting, Inc. All rights reserved. ES011

**Performance Data**

**Lumen Ambient Temperature (LAT) Multipliers**

Order Code	Color Temperature	Beam Angle	Mounting	Finish	Notes
DSX0	3000K	30°	Standard	Black	Standard Color Temperature 3000K (Warm White)
DSX0	4000K	30°	Standard	Black	Standard Color Temperature 4000K (Neutral White)
DSX0	5000K	30°	Standard	Black	Standard Color Temperature 5000K (Cool White)

**PHOTOMETRIC DIAGRAMS**

Full photometric data report available within 2 weeks from request. Contact factory. Tested in accordance with IESNA LM-79 and LM-80 standards.

**Lighting Facts**

Light Output (Lumens): 1400  
Power: 17.0W  
Lumens per Watt (lm/W): 82  
Beam Spread: 30°  
Beam Diameter: 6.8"  
Mounting Height: 10.0"  
Viewing Angle: 110°

**LITHONIA LIGHTING**

One Lithonia Way • Corning, Georgia 30512 • Phone: 800.765.7378 • [www.lithonia.com](http://www.lithonia.com)  
© 2017-2019 Andy Beale Lighting, Inc. All rights reserved. ES011

**FULL SET ISSUE HISTORY:**

Issue No.	Description	Date
1	ISSUE FOR PERMIT	11.04.19

**SHEET REVISION:**

No.	Description
-----	-------------

**PROJECT #: 19-1433**  
**DRAWN BY: CCF**  
**CHECKED BY: RMM**

**SHEET**

**ES0.2**