

(60' PUBLIC R.O.W.)

GOLDEN WEST WIND O&M BUILDING

GOLDEN WEST WIND SUBSTATION

NORTH LINE, NORTHEAST QUARTER, SECTION 20

NORTH QUARTER CORNER, SECTION 20, T12S, R61W, 6TH P.M., FOUND REBAR WITH 2" ALUMINUM CAP STAMPED "PLS 38222"

PROPOSED COLLECTION LINE

NORTHEAST CORNER, SECTION 29, T12S, R61W, 6TH P.M., FOUND REBAR WITH 2" ALUMINUM CAP STAMPED "PLS 38222"

WILLIAM HENDERSON REC. 214016814

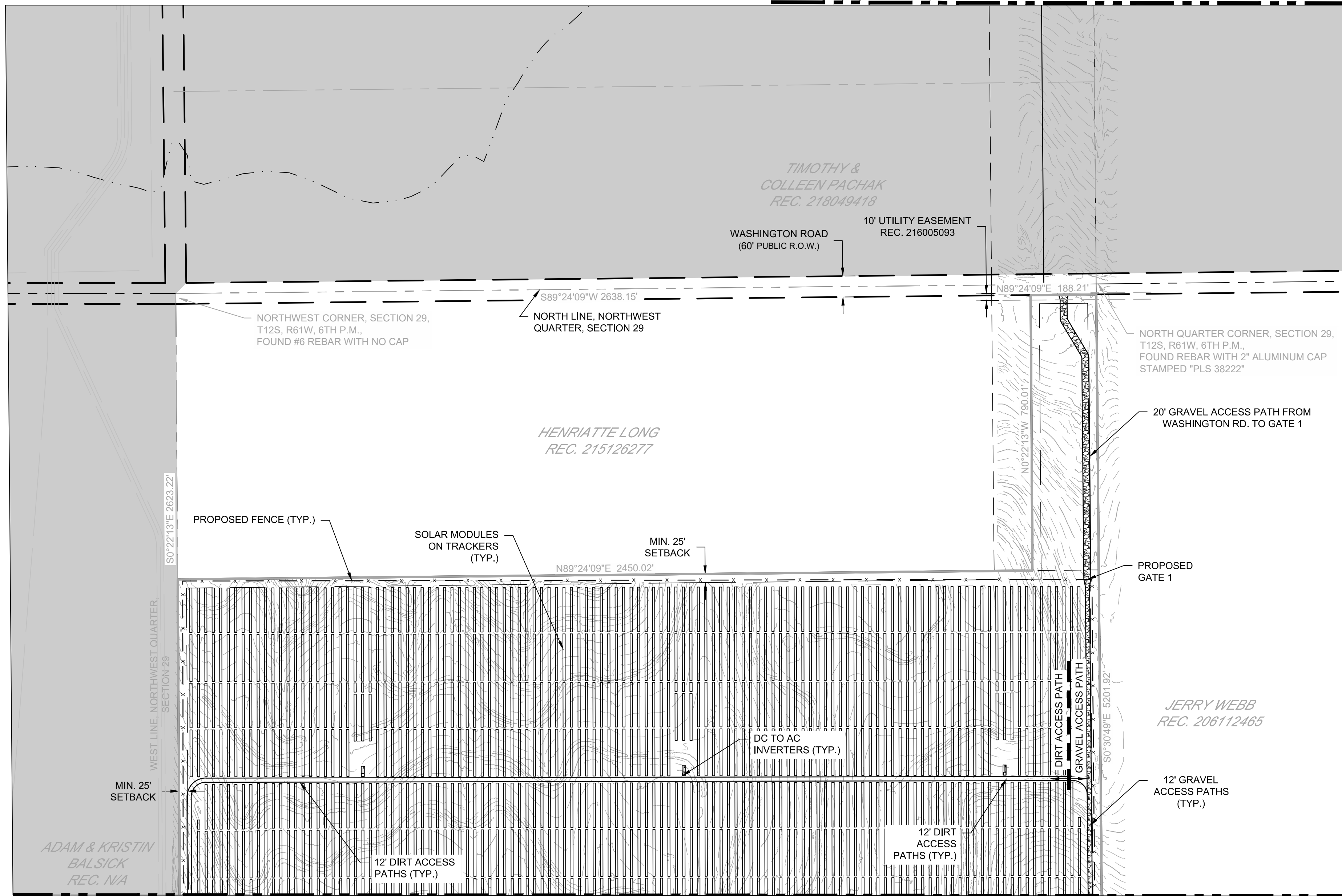
HORSE CREEK 100-YR FLOODPLAIN

ADAM & KRISTIN BALSICK REC. N/A

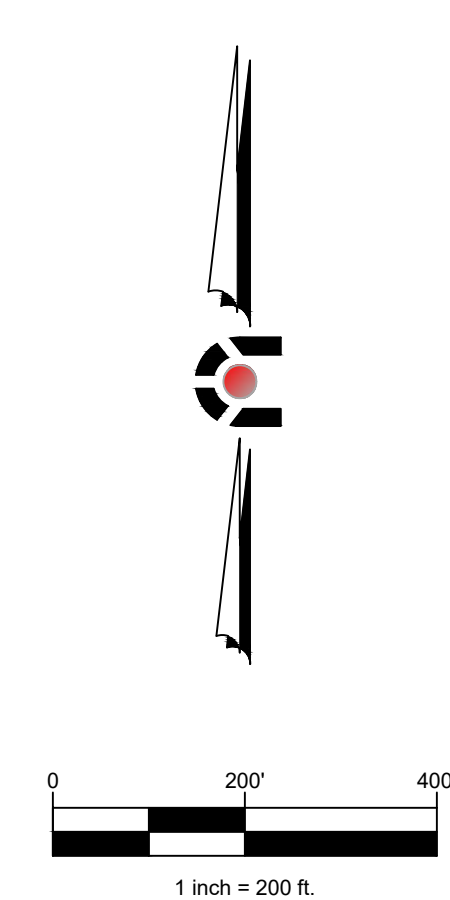
202018 12 15 PM 4:35:46Z GRADING YAK SOLAR ENGINEERING\CD\CD\18-082\18-082 SITE PLAN.DWG

MATCHLINE SEE ABOVE RIGHT

MATCHLINE SEE BELOW LEFT



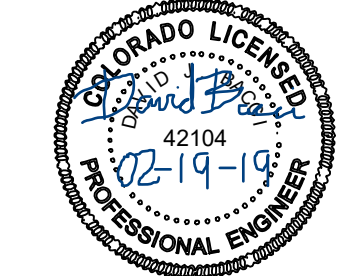
MATCHLINE SEE SHEET 8



NOTE:
DIRT ACCESS PATHS SHALL BE CONSTRUCTED OF RECOMPACTED EARTH.

LEGEND

— x —	EXISTING FENCE
— x —	PROPOSED FENCE
- - -	EXISTING MINOR CONTOUR
- - -	EXISTING MAJOR CONTOUR
- - -	SECTION LINE
— x — x —	GRAVEL ACCESS ROAD
— x —	DIRT ACCESS PATH
◆	SECTION CORNER
■	INVERTER
— x —	TRACK ARRAY
- - -	100 YR FLOODPLAIN
— x —	GOLDEN WEST WSE-O



CIVIL ENGINEERING
DEVELOPMENT CONSULTING
NATURAL RESOURCES CONSULTING
LAND SURVEYING
303.703.4444
1950 W. Littleton Blvd., Ste. 109
Littleton, CO 80120

CORE
CONSULTANTS

CALL 24 HOURS AHEAD IN ADVANCE BEFORE YOU DIG, GRADE, OR EXCAVATE FOR THE MARKING OF UNDERGROUND MEMBER UTILITIES.
CORE ASSUMES NO RESPONSIBILITY FOR EXISTING UTILITY LOCATIONS, DEPTHS, OR VERTICAL ALIGNMENT. MARK EXISTING UTILITIES FROM THE BEST AVAILABLE INFORMATION. IT IS THE USER'S RESPONSIBILITY TO VERIFY THE LOCATION OF ALL UTILITIES PRIOR TO THE COMMENCEMENT OF ANY CONSTRUCTION ACTIVITIES.

811
Know what's below.
Call before you dig.

#	REVISION DESCRIPTION	DATE	BY
1	1ST SUBMITTAL	10/23/18	DB
2	2ND SUBMITTAL	01/16/19	DB
3	3RD SUBMITTAL	10/17/19	DB

GRAZING YAK SOLAR
EL PASO COUNTY, COLORADO
WIND/SOLAR ENERGY OVERLAY PLAN
SITE LAYOUT

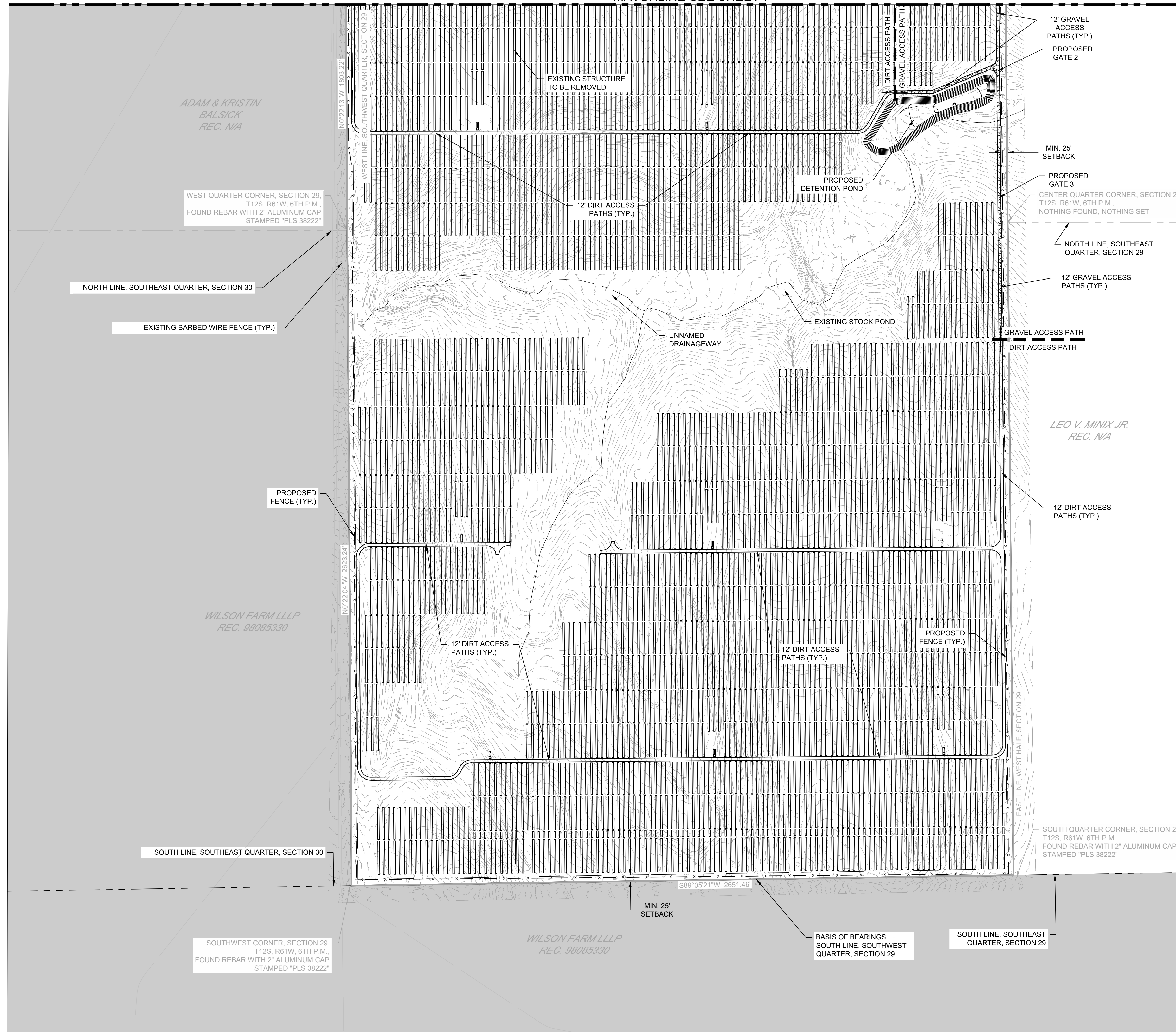
DESIGNED BY: DB
DRAWN BY: DB
CHECKED BY: DB

JOB NO.
18-082

SHEET
7 OF 10

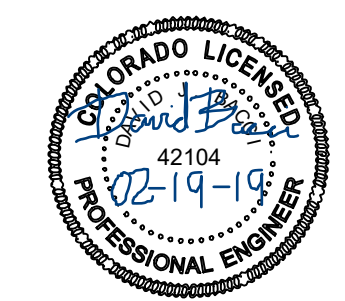
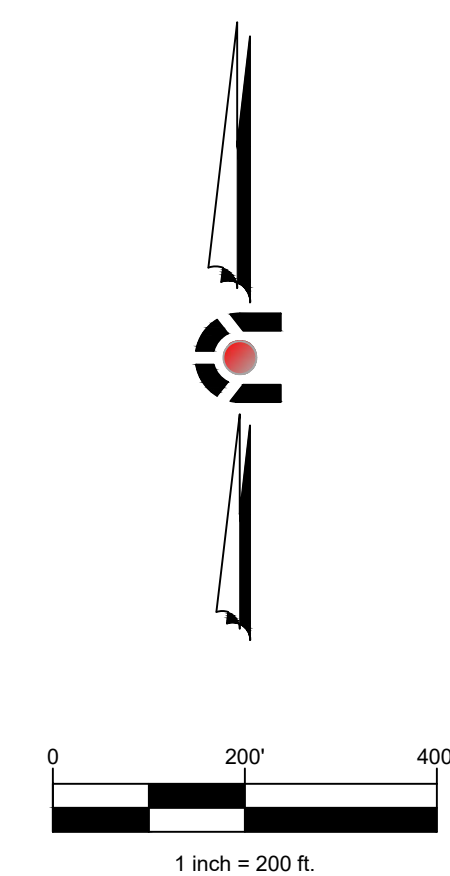
PCD FILE NO. WSEO-18-002

MATCHLINE SEE SHEET 7



NOTE:
DIRT ACCESS PATHS SHALL BE
CONSTRUCTED OF RECOMPACTED EARTH.

- LEGEND
- x- EXISTING FENCE
 - x- PROPOSED FENCE
 - - - EXISTING MINOR CONTOUR
 - - - EXISTING MAJOR CONTOUR
 - - - SECTION LINE
 - GRAVEL ACCESS ROAD
 - - - DIRT ACCESS PATH
 - ◆ SECTION CORNER
 - ◆ INVERTER
 - ▬ TRACK ARRAY
 - - - 100 YR FLOODPLAIN
 - GOLDEN WEST WSE-O



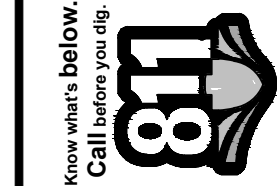
GRAZING YAK SOLAR
EL PASO COUNTY, COLORADO
WIND/SOLAR ENERGY OVERLAY PLAN
SITE LAYOUT

DESIGNED BY: DB
DRAWN BY: DB
CHECKED BY: DB

JOB NO.
18-082
SHEET
8 OF 10

PCD FILE NO. WSEO-18-002

CALL 2 BUSINESS DAYS IN ADVANCE BEFORE YOU DIG, GRADE, OR EXCAVATE FOR THE MARKING OF UNDERGROUND MEMBER UTILITIES.
CORE ASSUMES NO RESPONSIBILITY FOR EXISTING UTILITY LOCATIONS, HORIZONTAL AND VERTICAL ALIGNMENT, DEPTH, OR ANY OTHER INFORMATION. IT IS THE USER'S RESPONSIBILITY TO OBTAIN THE LOCATION OF ALL UTILITIES FROM THE APPROPRIATE AGENCIES.
COMPENSATION OF ANY CONSTRUCTION ACTIVITIES.



Know what's below.
Call before you dig.



CIVIL ENGINEERING
DEVELOPMENT CONSULTING
NATURAL RESOURCES CONSULTING
LAND SURVEYING
303.703.4444
1950 W. Littleton Blvd., Ste. 109
Littleton, CO 80120

202010 12:11 PM, 10154826 GRADING YAK SOLAR ENGINEERING\CD\18085330\014 SITE PLAN.DWG