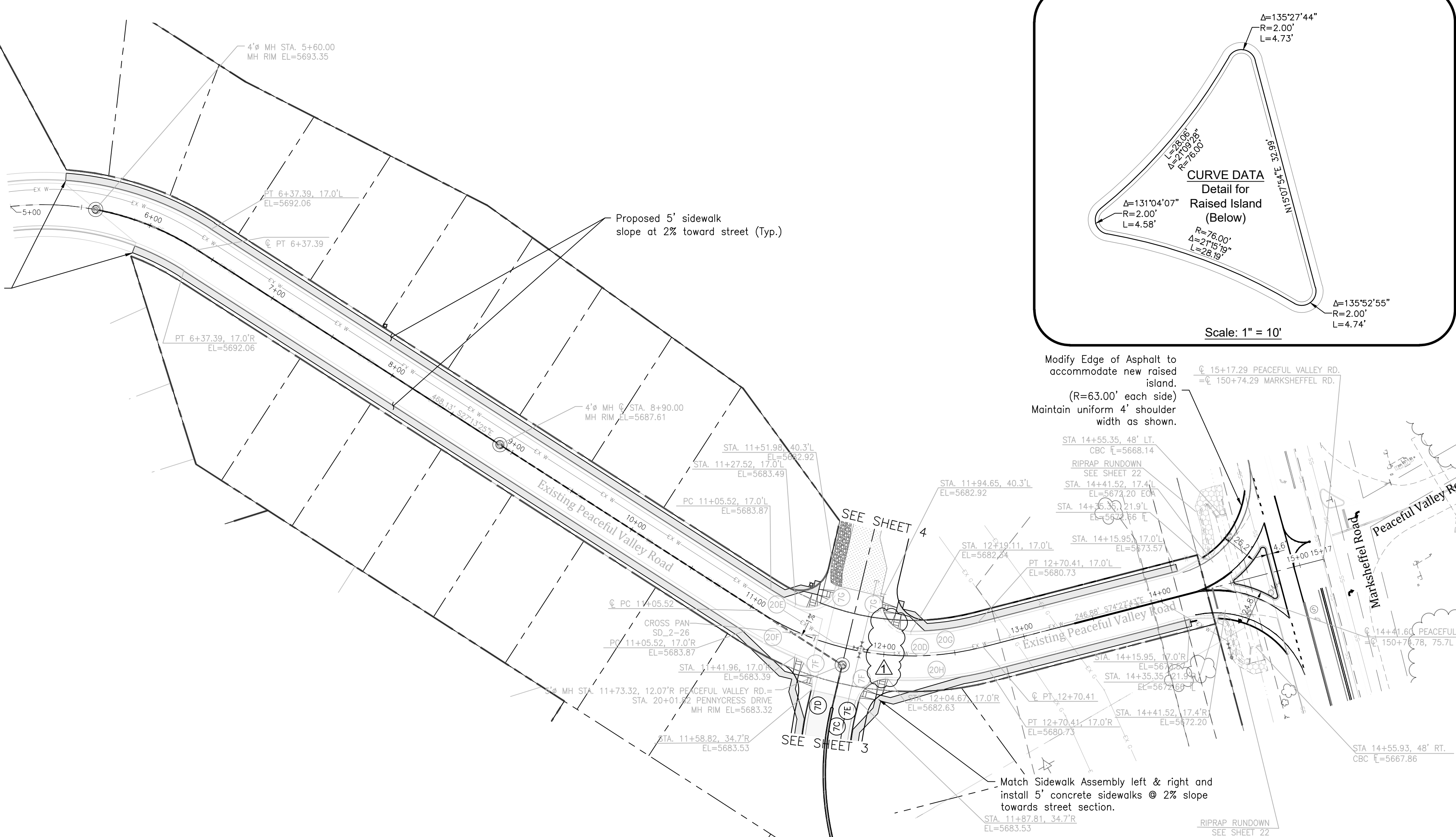
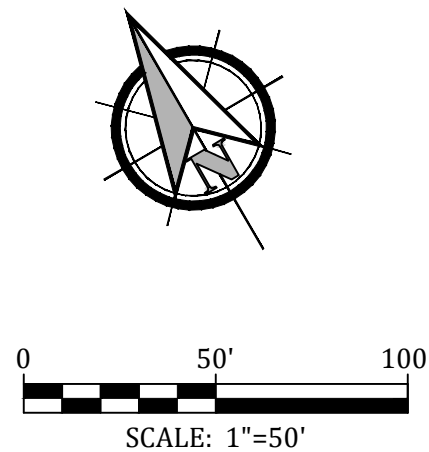
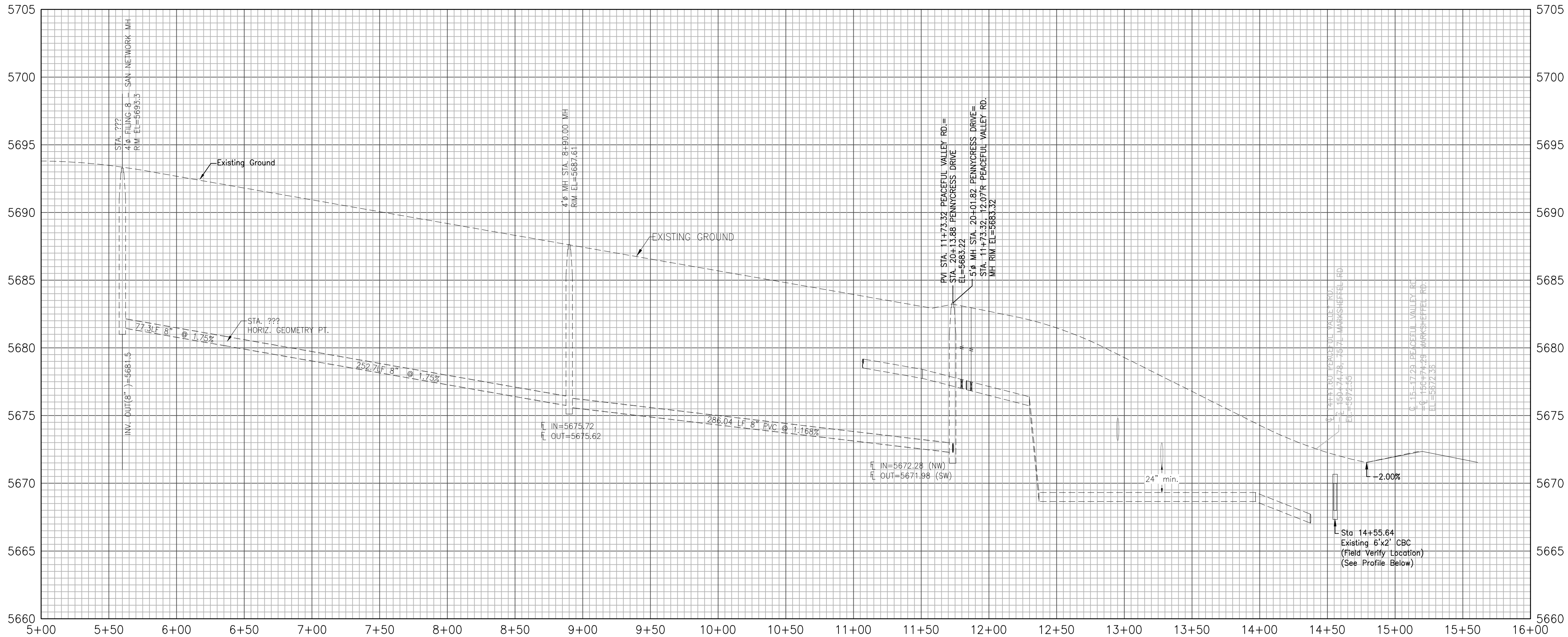


CURVE DATA	
7F	$\Delta=81^{\circ}01'06''$ $L=28.28'$ $R=20.00'$
7G	$\Delta=103^{\circ}07'13''$ $L=36.00'$ $R=20.00'$
20C	$\Delta=6^{\circ}18'07''$ $L=20.13'$ $R=183.00'$
20F	$\Delta=10^{\circ}26'25''$ $L=39.54'$ $R=217.00'$
20G	$\Delta=14^{\circ}41'46''$ $L=46.94'$ $R=183.00'$
20H	$\Delta=18^{\circ}50'05''$ $L=71.33'$ $R=217.00'$
20I	$\Delta=90^{\circ}20'56''$ $L=31.54'$ $R=20.00'$
20J	$\Delta=89^{\circ}57'21''$ $L=31.40'$ $R=20.00'$

Existing Peaceful Valley Road is installed to Marksheffel Road, but without sidewalks and ramps.
Match sidewalk assembly left & right and install 5' concrete sidewalks @ 2% slope towards street section feather grading at overlot areas to back of walk to avoid retaining stormwater on individual lots (Typ.)



PROFILE VIEW OF PEACEFUL VALLEY ROAD



APPROVED
Engineering Department
10/26/2021 2:25:51 PM
EPC Planning & Community
Development Department

Kiowa

Engineering Corporation

1604 South 21st Street
Colorado Springs, Colorado 80904
(719) 630-7342

W

WIDEFIELD

Investment Group

GLEN AT WIDEFIELD NO. 10

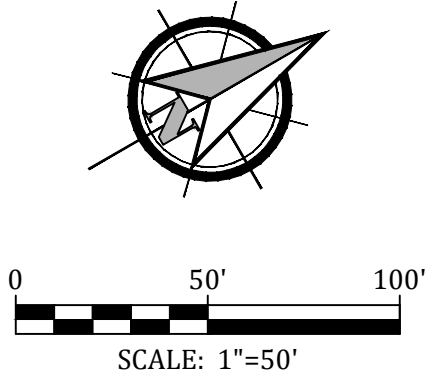
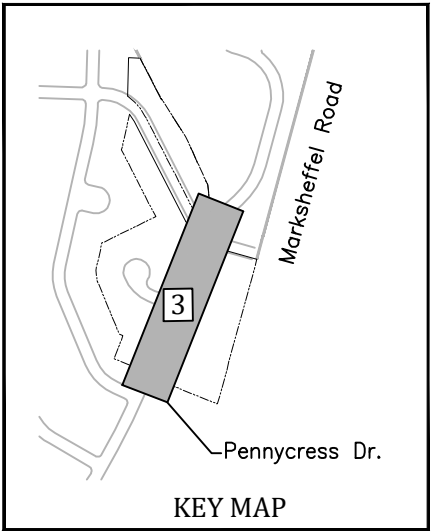
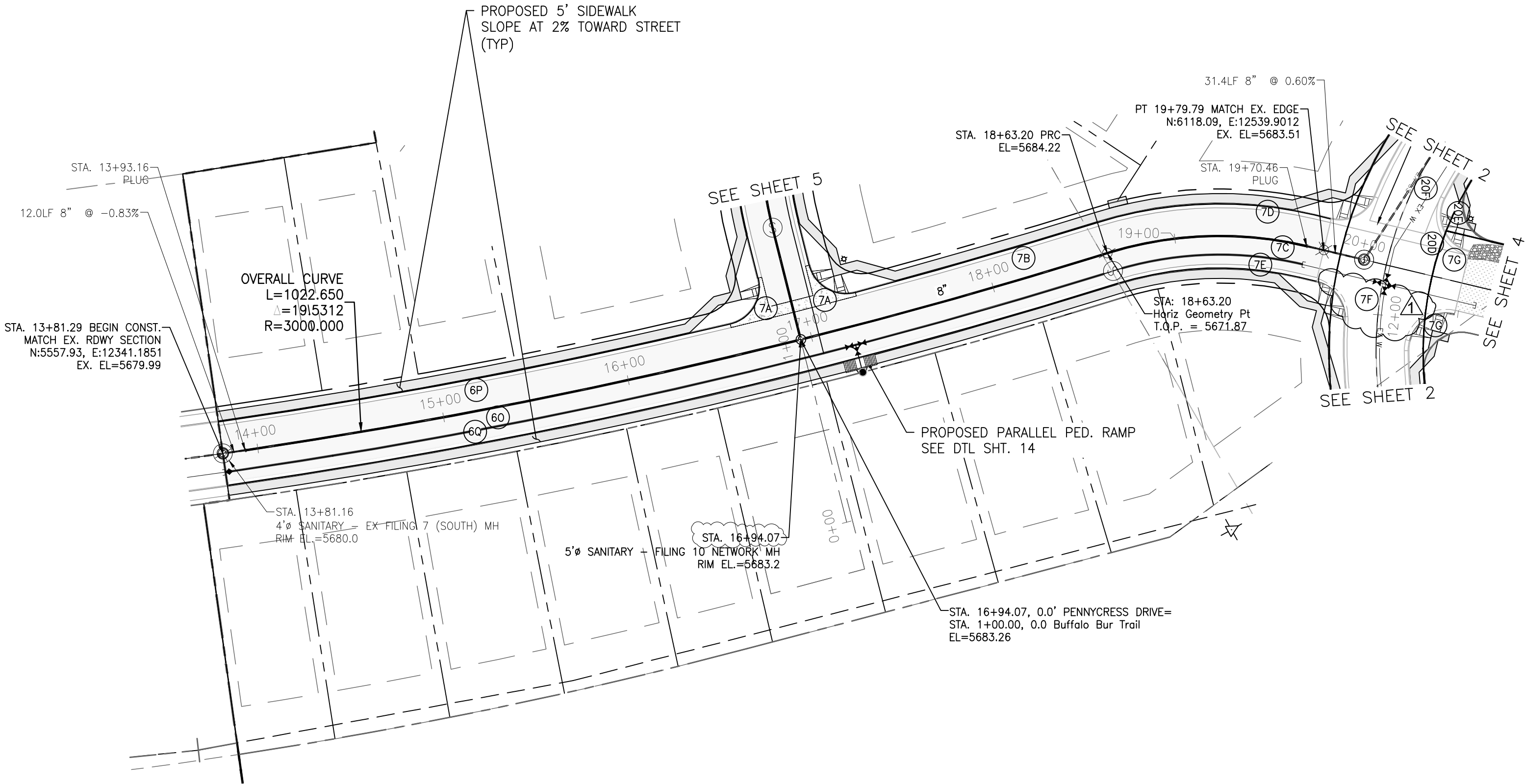
Plan and Profile - Peaceful Valley Road

(Sidewalks & Pedestrian Ramps Only) Sta: (05+60.00 to Marksheffel Rd)

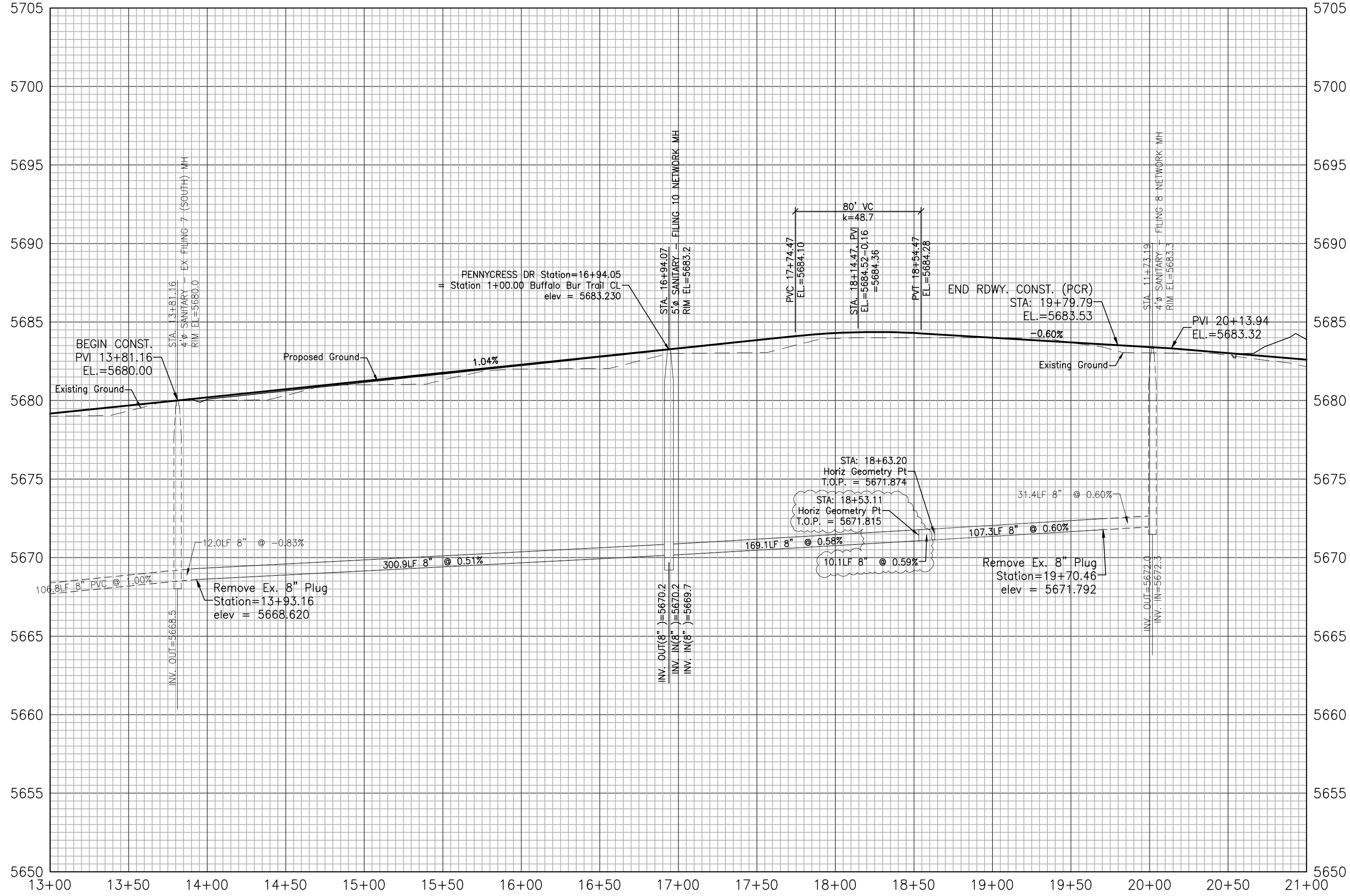
EL PASO, COUNTY, COLORADO

Project No.:	19016
Date:	Nov. 23, 2020
Design:	MK
Drawn:	MJK
Check:	AWMc
Revisions:	
1	Crossspan Removed
SHEET	
2A	
2 of 17 Sheets	

CURVE DATA	
(6N)	$\Delta=90^{\circ}42'56"$ L=31.87' R=20.00'
(6O)	$\Delta=19^{\circ}32'06"$ L=1022.84' R=3000.00'
(6P)	$\Delta=6^{\circ}38'34"$ L=345.85' R=2983.00'
(6Q)	$\Delta=19^{\circ}32'06"$ L=1022.84' R=3000.00'
(7A)	$\Delta=90^{\circ}39'27"$ L=31.85' R=20.00'
(7B)	$\Delta=2^{\circ}34'35"$ L=134.13' R=2983.00'
(7C)	$\Delta=35^{\circ}47'51"$ L=124.96' R=200.00'
(7D)	$\Delta=35^{\circ}47'51"$ L=135.58' R=217.00'
(7E)	$\Delta=35^{\circ}47'51"$ L=114.34' R=183.00'
(7F)	$\Delta=81^{\circ}01'06"$ L=28.28' R=20.00'
(7G)	$\Delta=103^{\circ}07'13"$ L=36.00' R=20.00'
(20D)	$\Delta=47^{\circ}14'18"$ L=164.89' R=200.00'
(20E)	$\Delta=1^{\circ}14'12"$ L=3.95' R=183.00'
(20F)	$\Delta=5^{\circ}22'31"$ L=20.36' R=217.00'



PROFILE VIEW OF PENNYCRESS DRIVE



APPROVED
Engineering Department
10/26/2021 4:26:01 PM
dsdnijkamp
EPC Planning & Community
Development Department

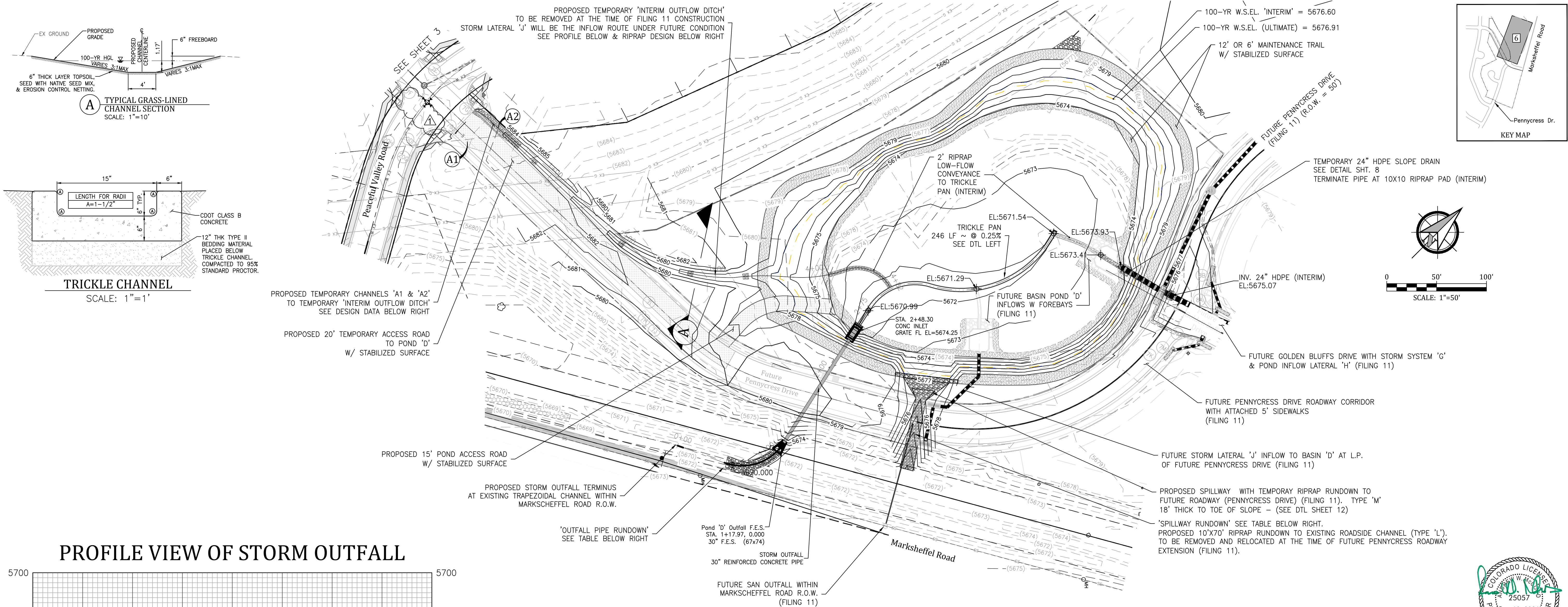


GLEN AT WIDEFIELD NO. 10
Plan and Profile - Pennycress
Sta: (13+81.16 to 21+00.00)
EL PASO, COUNTY, COLORADO

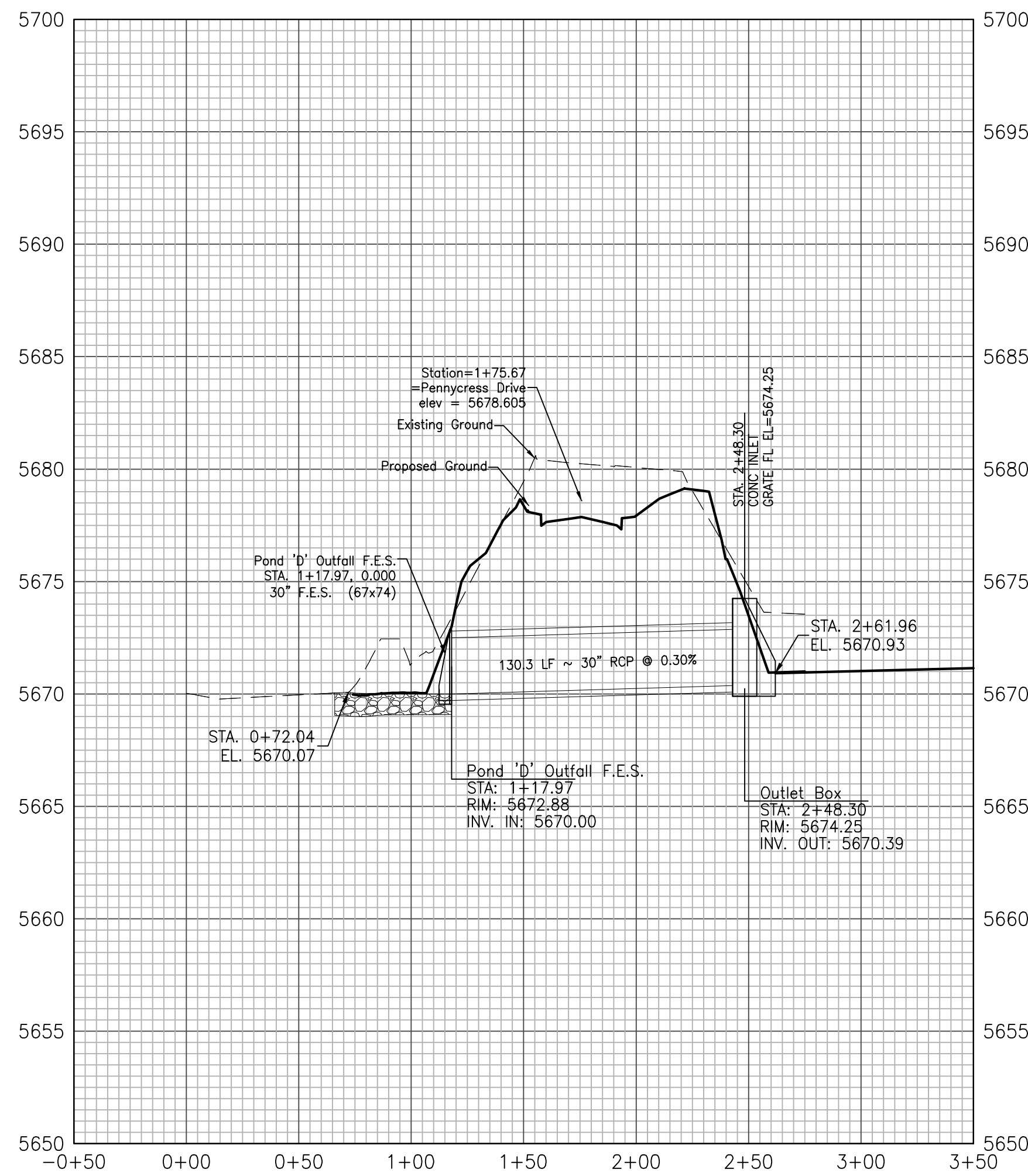
Project No.:	19016
Date:	Nov 23, 2020
Design:	MK
Drawn:	MJK
Check:	AWMc
Revisions:	
1	Crossspan Removed

SHEET

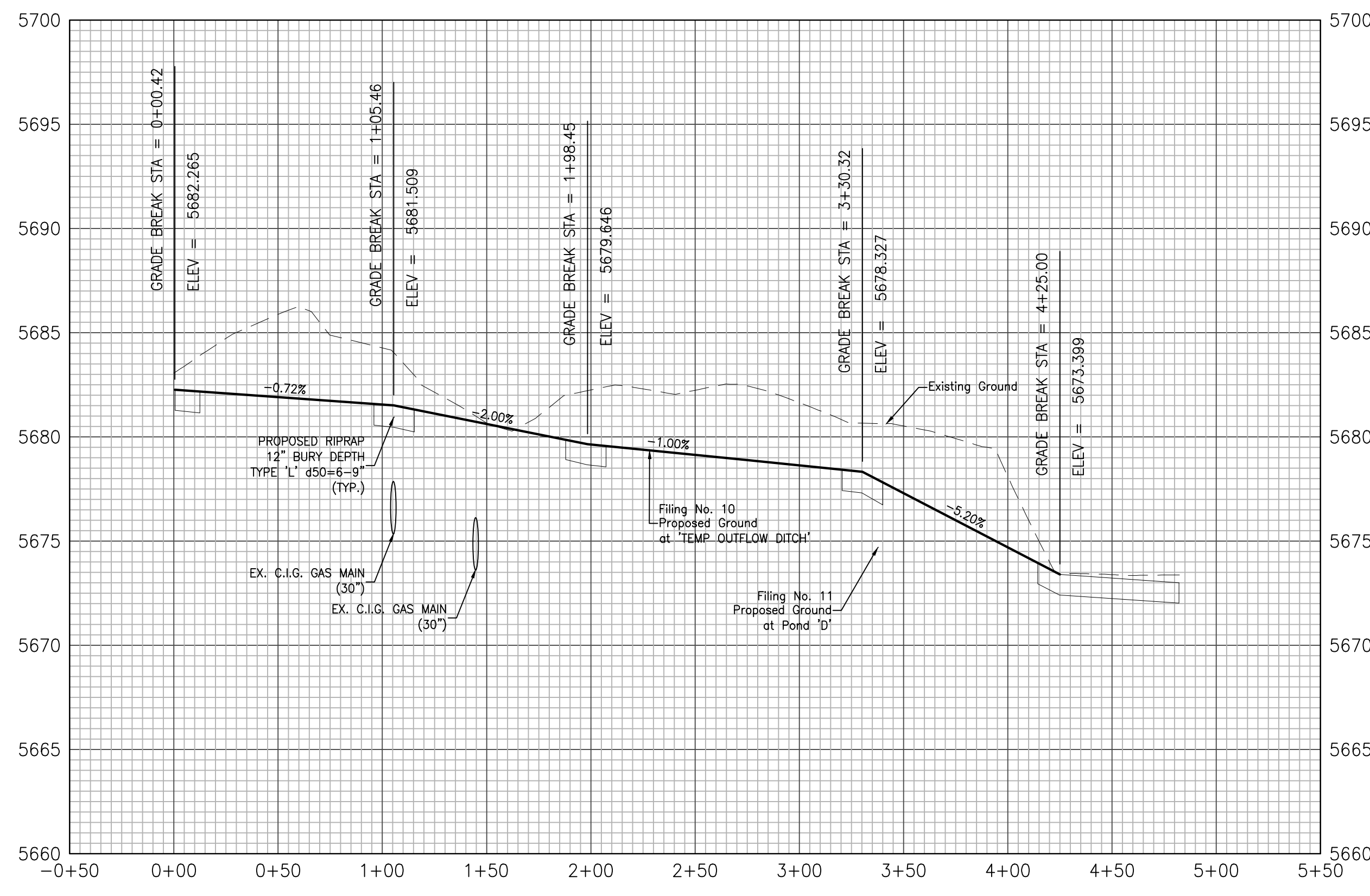
3



PROFILE VIEW OF STORM OUTFALL



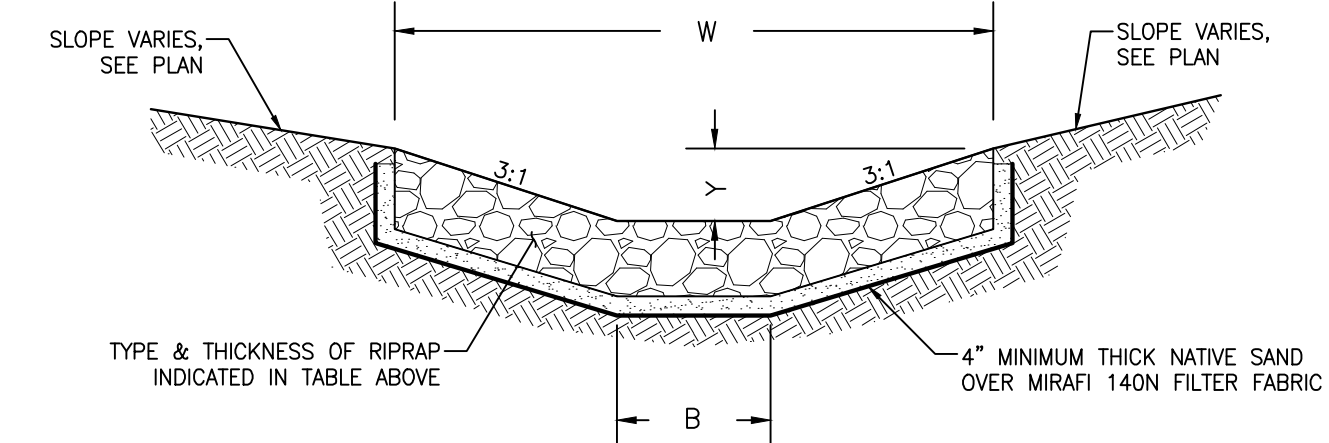
PROFILE VIEW OF TEMP OUTFLOW DITCH



CLASSIFICATION AND GRADATION OF RIPRAP				
RIPRAP DESIGNATION	% SMALLER THAN GIVEN SIZE BY WEIGHT	INTERMEDIATE ROCK DIMENSION (INCHES)	d50* (INCHES)	
TYPE VL	70-100	12		
	50-70	9		
	35-50	6		6**
	2-10	2		
TYPE L	70-100	15		
	50-70	12		
	35-50	9		9**
	2-10	3		
TYPE M	70-100	21		
	50-70	18		
	35-50	12		12**
	2-10	4		

* d50=MEAN PARTICLE SIZE (INTERMEDIATE DIMENSION) BY WEIGHT.
** MIX VL, L AND M RIPRAP WITH 35% TOPSOIL (BY VOLUME) AND BURY WITH 4-6 INCHES OF TOPSOIL, ALL VIBRATION COMPACTED & REVEGETATE. (TABLE MD-7: CLASSIFICATION AND GRADATION OF ORDINARY RIPRAP. UDFCD, DRAINAGE CRITERIA MANUAL, VOL. 1)

LOCATION	B	W	Y	TYPE	DEPTH
'SPILLWAY RUNDOWN'	9'	27'	1.6'	'M'	18"
'OUTFALL PIPE RUNDOWN'	4'	10'	1.3'	'M'	18"
'INTERIM OUTFLOW DITCH'	4'	10'	1.2'	'L'/Soil	12"
'INTERIM POND BOTTOM 'SOUTH CURBLINE FLOWS'	0'	4.6'	0.57'	'L'/Soil	12"
'INTERIM POND BOTTOM 'NORTH CURBLINE FLOWS'	4'	9.3'	0.67'	'L'/Soil	12"
'INTERIM POND BOTTOM 'LOW-FLOW CONVEYANCE'	0'	4'	0.5'	'L'/Soil	6"



RIPRAP RUNDOWN DETAILS
SCALE: NTS

APPROVED
Engineering Department
10/26/2021 4:26:16 PM
EPC Planning & Community Development Department

GLEN AT WIDEFIELD NO. 10 Proposed Basin 'D' Filing 10 Portions Only EL PASO, COUNTY, COLORADO

Project No.: 19016
Date: Nov. 23, 2020
Design: MK
Drawn: MJK
Check: AWMc
Revisions:
Crossspan Removed

SHEET

11

13 of 17 Sheets

19016-GW10-11-ST.dwg/Sep 01, 2021

Kiowa
Engineering Corporation
1604 South 21st Street
Colorado Springs, Colorado 80904
(719) 630-7342

W
WIDEFIELD
Investment Group