

Chuck Broerman  
12/17/2021 11:57:51 AM  
Doc \$0.00  
Rec \$23.00

El Paso County, CO



2  
Pages 221714879

### SUBDIVISION/CONDOMINIUM PLAT

Reception Number                      Date                      Time

2

Reception Fee                      Number of Pages                      File Number

The Glen at Widefield subdivision filing NO.10  
Name of Plat

~~THE~~ Glen Investment Group NO. VIII, LLC  
Owner's Name

Subdivision

Condominium

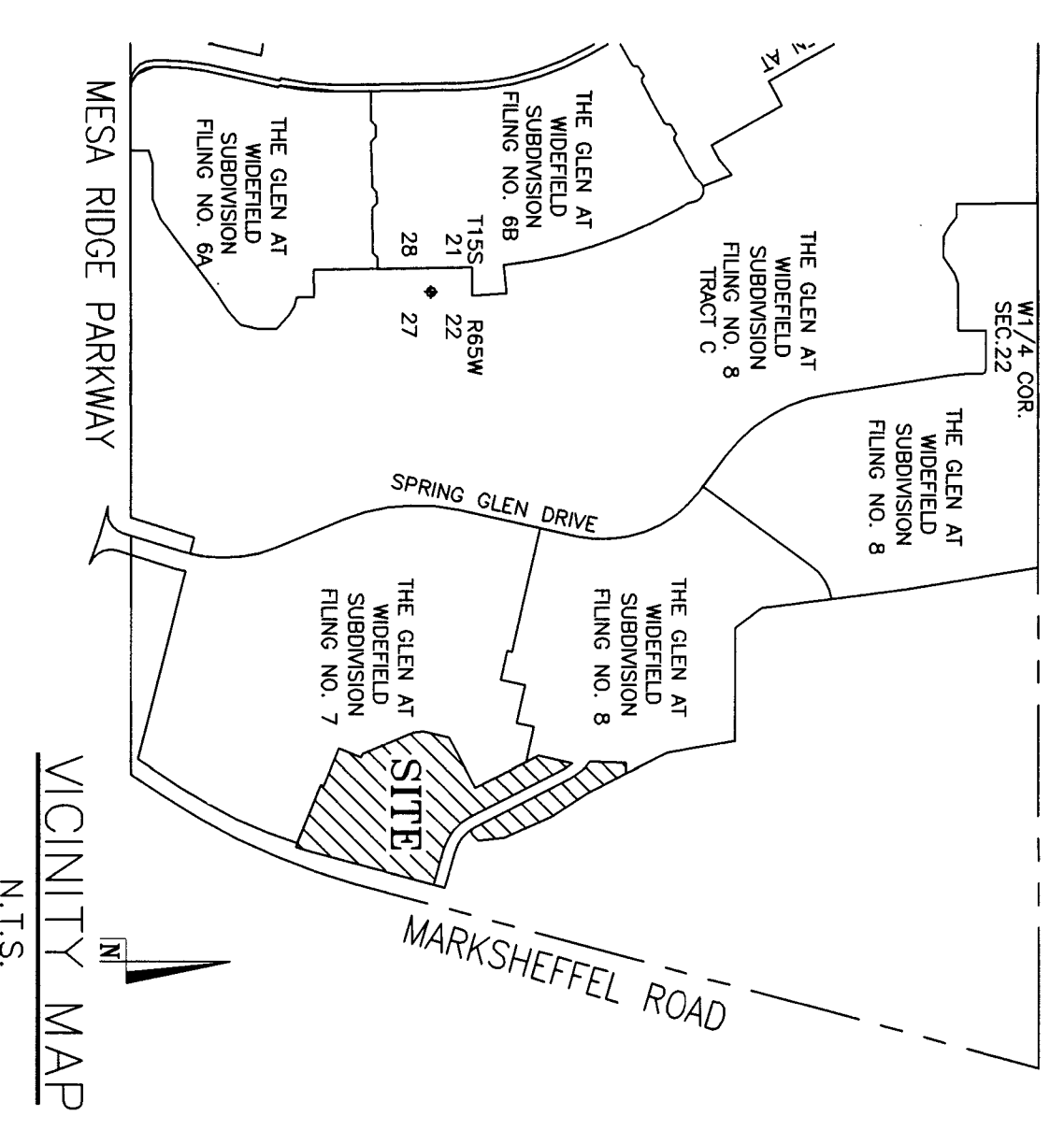
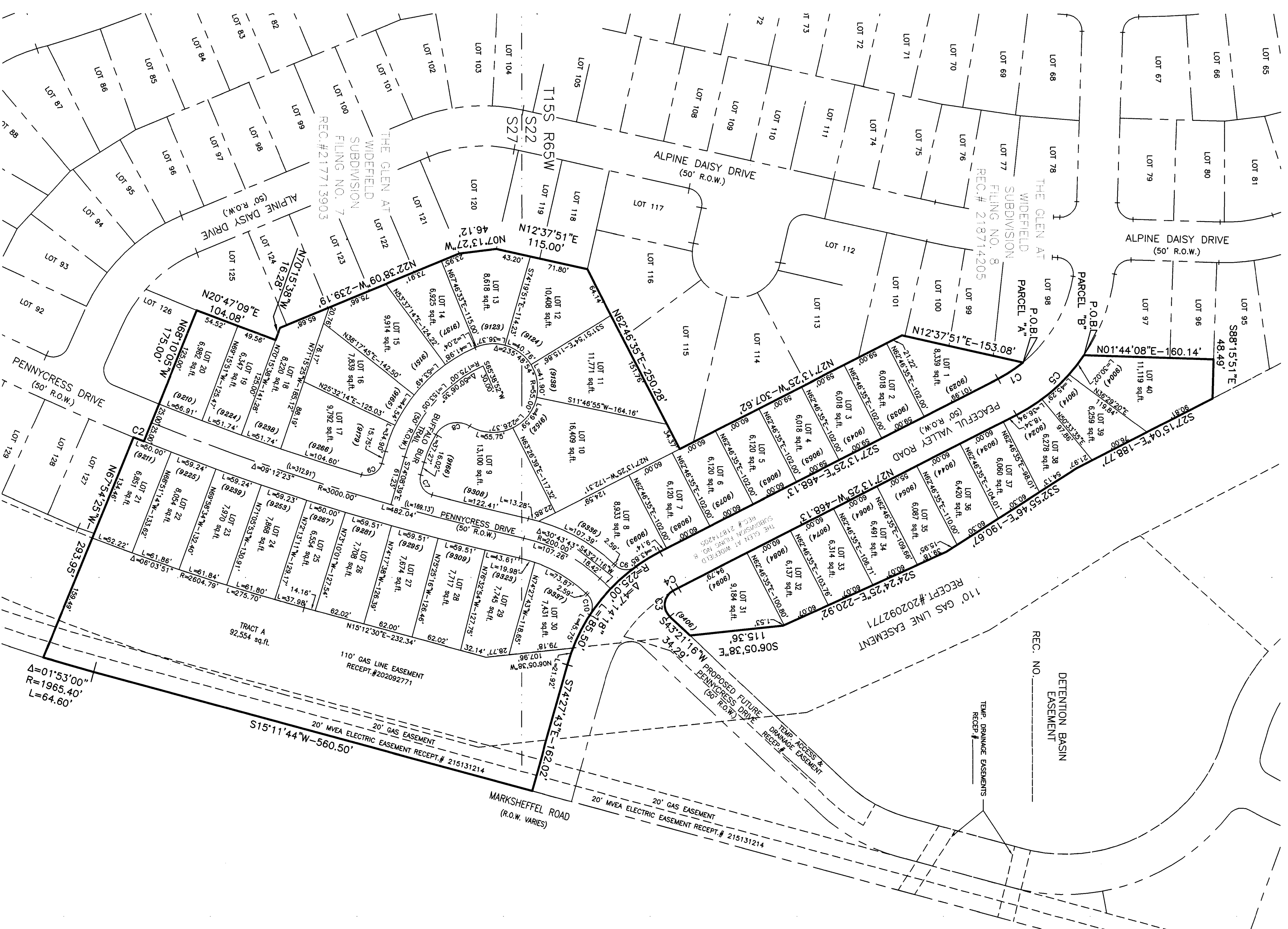


# THE GLEN AT WIDEFIELD SUBDIVISION FILING NO. 10

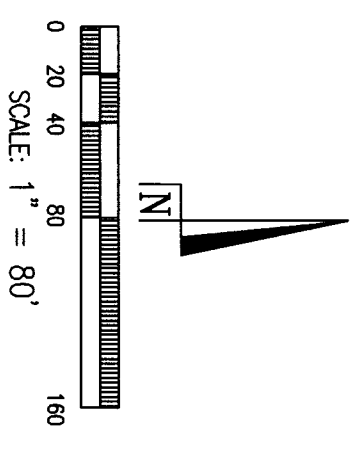
A portion of the Southwest One-quarter (SW1/4) of Section 22 and the Northwest One-quarter (NW1/4) of Section 27  
Township 15 South (T15S), Range 65 West (R65W) of the 6TH P.M.

County of El Paso, State of Colorado

14879



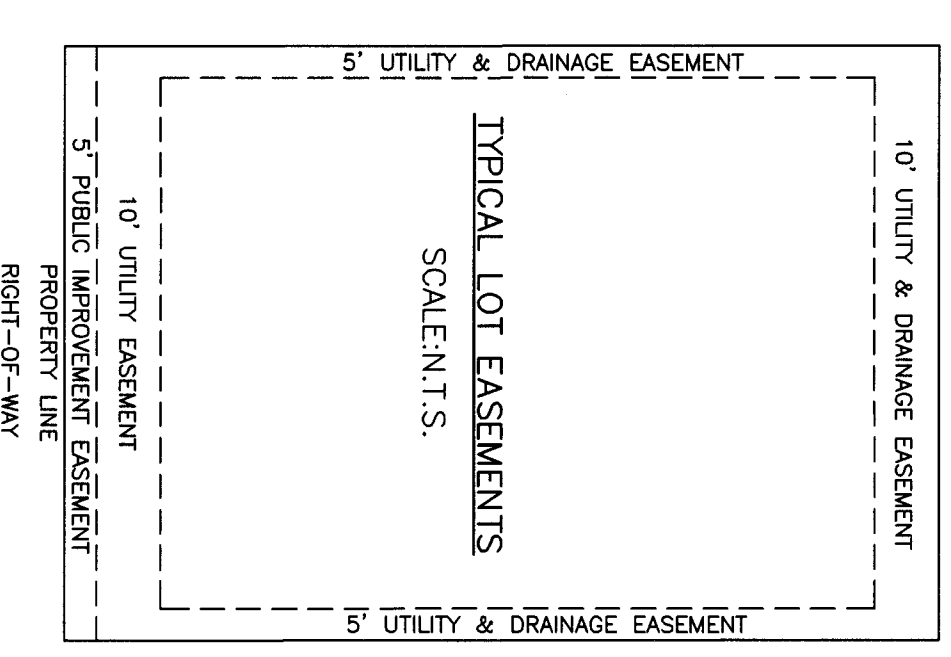
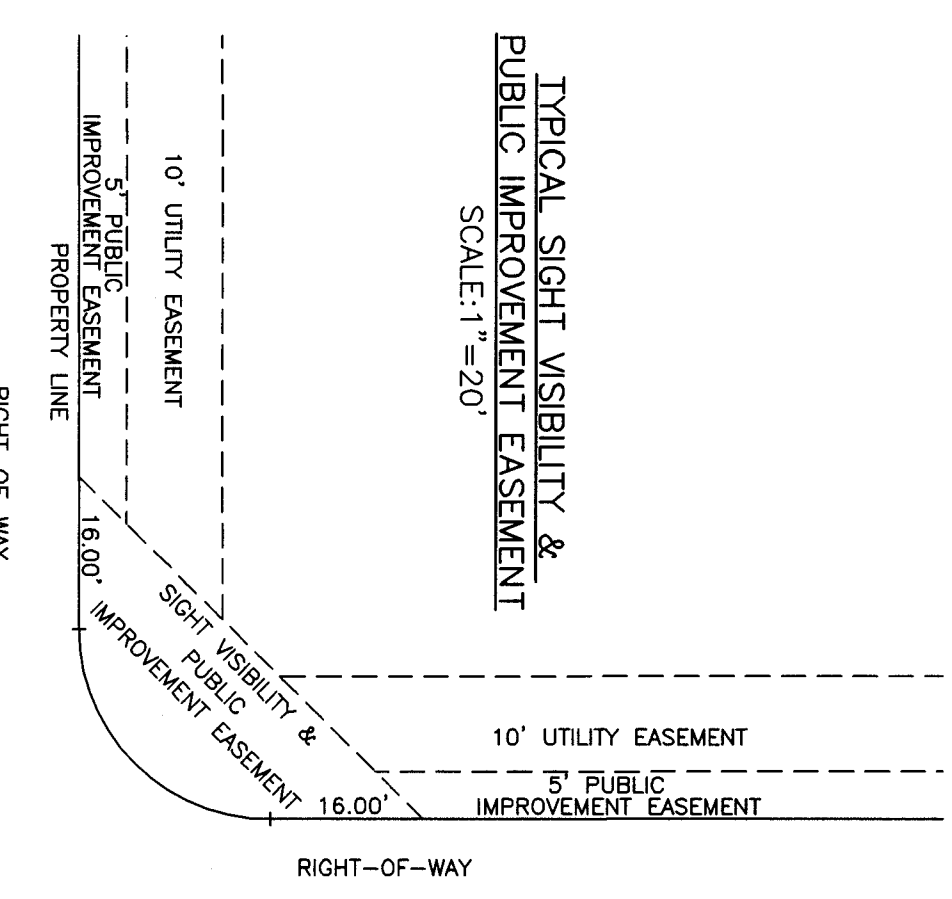
CURVE	BEARING	LENGTH	CHORD BEARING
C1	N20°47'09"E	104.08'	S11°27'48"E
C2	N20°47'09"E	104.08'	S11°27'48"E
C3	N20°47'09"E	104.08'	S11°27'48"E
C4	N20°47'09"E	104.08'	S11°27'48"E
C5	N20°47'09"E	104.08'	S11°27'48"E
C6	N20°47'09"E	104.08'	S11°27'48"E
C7	N20°47'09"E	104.08'	S11°27'48"E
C8	N20°47'09"E	104.08'	S11°27'48"E
C9	N20°47'09"E	104.08'	S11°27'48"E
C10	N20°47'09"E	104.08'	S11°27'48"E



PINNACLE LAND SURVEYING COMPANY, INC.  
121 COUNTY ROAD 5, DIVIDE, CO 687-7360

NOTICE: ACCORDING TO COLORADO LAW YOU MUST COMMENCE ANY LEGAL ACTION BASED UPON ANY DEFECT IN THIS SURVEY WITHIN THREE YEARS AFTER THE DATE OF THE CERTIFICATION SHOWN HEREON.

THE GLEN AT WIDEFIELD SUBDIVISION FILING NO.10  
DRAWN BY: JMW  
CHECKED BY: JMW  
JOB NO.: 19001600  
DATE: 07/21/21  
DWG.: 19001600-FP-DWG  
SHEET 2 OF 2



SF-19-021