

SITE DEVELOPMENT PLAN

LOT 2, GREATER EUROPE MISSION SUBDIVISION FILING NO. 1

LOCATED IN THE SOUTHWEST QUARTER OF SECTION 11,
TOWNSHIP 11 SOUTH, RANGE 67 WEST OF THE SIXTH PRINCIPAL MERIDIAN,
COUNTY OF EL PASO, STATE OF COLORADO



REV. NO.	DESCRIPTION	DATE
1	REVISIONS PER 1ST SUBMITTAL COMMENTS	06/11/2019

SITE DEVELOPMENT PLAN
MONUMENT STEEL STRUCTURES
 COVER SHEET
 18910 BASE CAMP ROAD
 MONUMENT, COLORADO

PROJ NO: SSA
 ENG:
 CHKD:
 DATE: 04/15/2019

SHEET NUMBER
CS
 1 OF 9

PROJECT CONTACTS:

OWNER:
STEEL STRUCTURES AMERICA INC.
3635 E. COVINGTON AVE.
POST FALLS, ID 83854
866.290.3471

MUNICIPALITY:
EL PASO COUNTY
2880 INTERNATIONAL CIRCLE, SUITE 110
COLORADO SPRINGS, CO 80910
719.520.6300

CIVIL ENGINEER:
TERRA FORMA SOLUTIONS
CONTACT: TODD JOHNSON, PE
9994 QUINTERO STREET
COMMERCE CITY, CO 80022
303.257.7653

GEO-TECH:
CTL THOMPSON INC.
5170 MARK DABLING BLVD
COLORADO SPRINGS, CO 80918
719.528.8300

LANDSCAPE:
TIM DUNN DESIGN
LANDSCAPE ARCHITECTURE
6948 DAVENTY PLACE
CASTLE PINES, CO 80108
720.350.2411

FIRE DISTRICT:
TRI-LAKES MONUMENT FIRE PROTECTION DISTRICT
16055 OLD FOREST POINT, SUITE 103
MONUMENT, CO 80132
719.484.0911

SURVEYOR:

AZTEC CONSULTANTS, INC.
300 E. MINERAL AVE, SUITE 1
LITTLETON, CO 80122
303.713.1898

WATER / SEWER:

WOODMOOR WATER AND SANITATION DISTRICT
1845 WOODMOOR DRIVE
MONUMENT, CO 80132
719.488.2525

GAS:

BLACK HILLS ENERGY
1515 WYNKOOP ST #500
DENVER, CO 80202
888.890.5554

ELECTRIC:

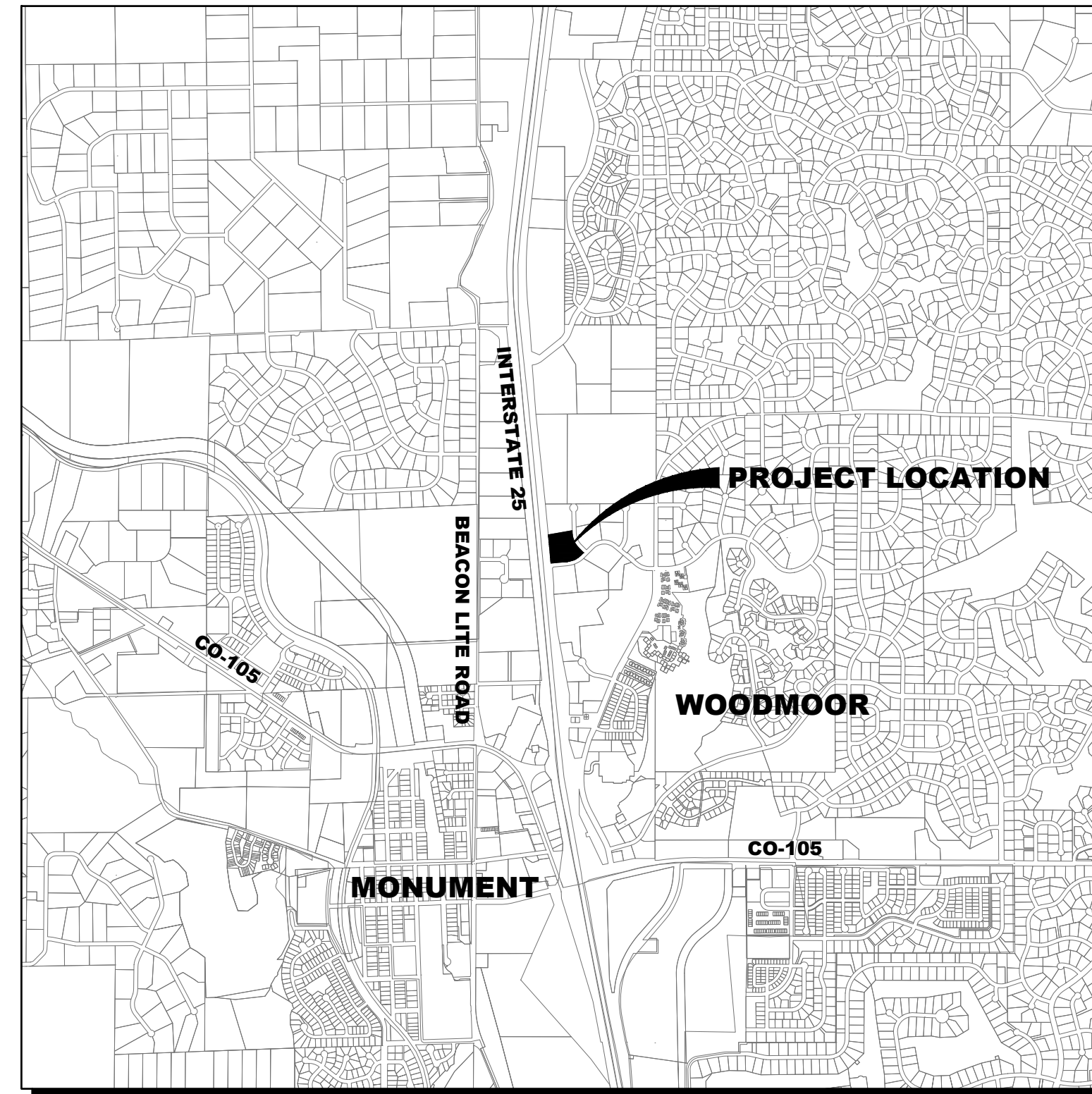
MOUNTAIN VIEW ELECTRIC ASSOCIATION, INC.
11140 E. WOODMEN ROAD
FALCON, CO 80831
719.495.2283

TELEPHONE:

CENTURY LINK
9 SUNCREST ROAD
PALMER LAKE, CO 80133
719.270.1653

ARCHITECT:

STEEL STRUCTURES AMERICA INC.
3635 E. COVINGTON AVE.
POST FALLS, ID 83854
866.290.3471



VICINITY MAP
1"=2000'



PROJECT DESCRIPTION:

TO CONSTRUCT AN OFFICE BUILDING, TWO DISPLAY BUILDINGS, AND FOUR MINI STORAGE / RV STORAGE BUILDINGS AT LOT 2, GREATER EUROPE MISSION SUBDIVISION FILING NO. 1.

NO PHASING OF IMPROVEMENTS IS PROPOSED.

BENCHMARK:

NGS CONTROL POINT T 395 BEING A STANDARD NGS STEEL ROD IN A LOGO MONUMENT BOX LOCATED 20 MILES NORTH OF COLORADO SPRINGS ON THE EAST SIDE OF I-25, 1,200 FEET NORTH OF THE WEIGH STATION BUILDING, AND 20.5 FEET EAST OF THE EASTERLY EDGE OF OIL OF THE NORTHBOUND LANES OF I-25.

ELEVATION = 7111.32 (NAVD88)

LEGAL DESCRIPTION:

PER LAND TITLE GUARANTEE COMPANY COMMITMENT ORDER NO. SC55073096-3, WITH AN EFFECTIVE DATE OF OCTOBER 2, 2018 AT 5:00 P.M.:

LOT 2, GREATER EUROPE MISSION SUBDIVISION FILING NO. 1, COUNTY OF EL PASO, STATE OF COLORADO

BASIS OF BEARINGS:

THE WESTERLY BOUNDARY LINE OF LOT 2, GREATER EUROPE MISSION SUBDIVISION FILING NO. 1, BEING MONUMENTED AT BOTH ENDS BY A NO. 5 REBAR WITH A RED PLASTIC CAP STAMPED "AZTEC PLS 38256", ASSUMED TO BEAR NORTH 05°26'25" WEST.

FLOOD ZONE:

THE SUBJECT PROPERTY SHOWN HEREIN LIES WITHIN OTHER AREAS - ZONE X, AREAS DETERMINED TO BE OUTSIDE THE 0.2% ANNUAL CHANCE FLOODPLAIN, AS SHOWN ON FEDERAL EMERGENCY MANAGEMENT AGENCY FLOOD INSURANCE RATE MAP INDEX NO. 08041C0276G, MAP REVISED DECEMBER 7, 2018.

PROPERTY STATISTICS:

PLANNING	EXISTING/ALLOWED		PROVIDED
	CC (COMMERCIAL COMMUNITY)	CC (COMMERCIAL COMMUNITY)	CC (COMMERCIAL COMMUNITY)
ZONING			
NET AREA (AC)	4.001		4.001
GROSS FLOOR AREA (GFA) (SF)	N/A		56,176
FLOOR AREA RATIO (FAR)	N/A		0.32
MAXIMUM BUILDING HEIGHT (FT)	45		20' - 4"
OCCUPANCY	N/A		B-1 OFFICES
ACCESSORY OCCUPANCY	N/A		S-1 STORAGE / M-RETAIL
CONSTRUCTION TYPE			I-B (NON-SPRINKLERED)
SETBACKS			
FRONT (FT)	25		>25
SIDE (FT)	25		>25 (NORTH = 0)
REAR (FT)	25		>25

BUILDING STATISTICS:

	UNITS	AREA (SF)
OFFICE (2 FLOORS AT 1200 SF)	--	2,400
DISPLAY BUILDING (30'X40')	--	1,200
DISPLAY BUILDING (30'X30')	--	900
STORAGE BUILDING 1	24	8,700
STORAGE BUILDING 2	52	19,840
STORAGE BUILDING 3	19	14,640
STORAGE BUILDING 4	11	8,496
GROSS FLOOR AREA (GFA)	106	56,176

PARKING STATISTICS:

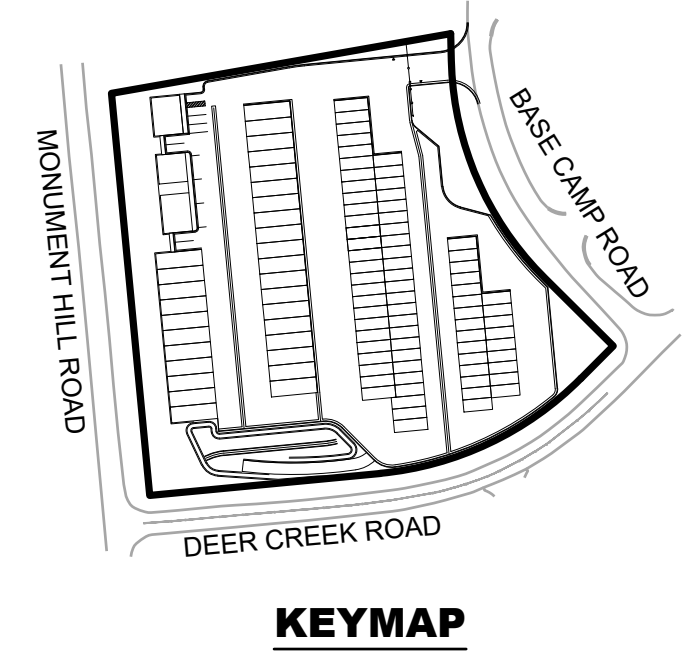
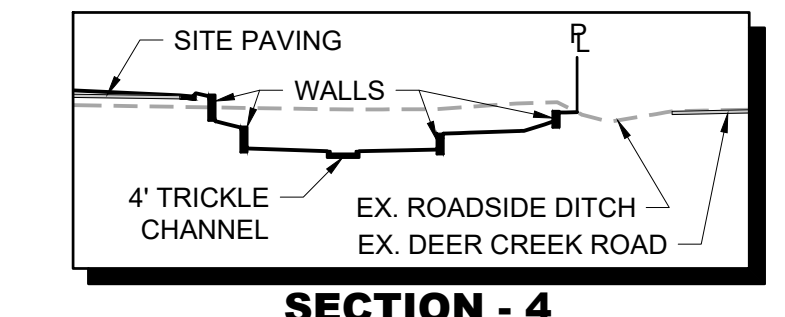
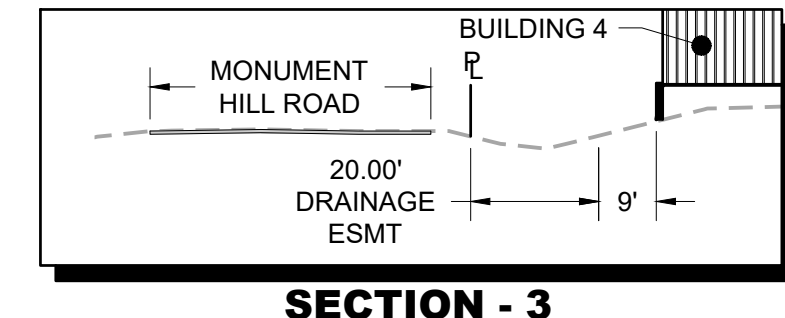
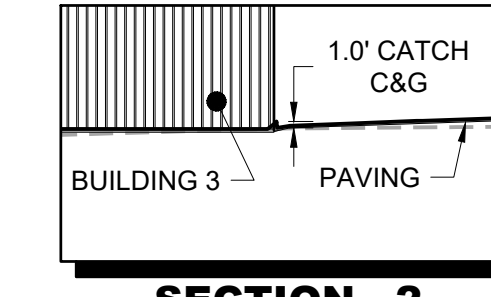
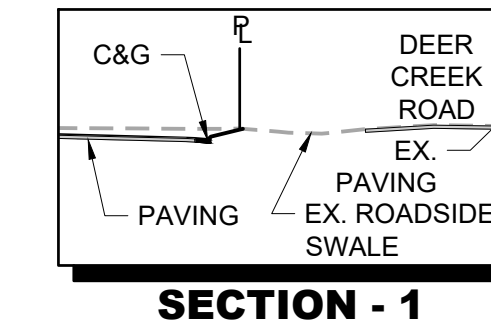
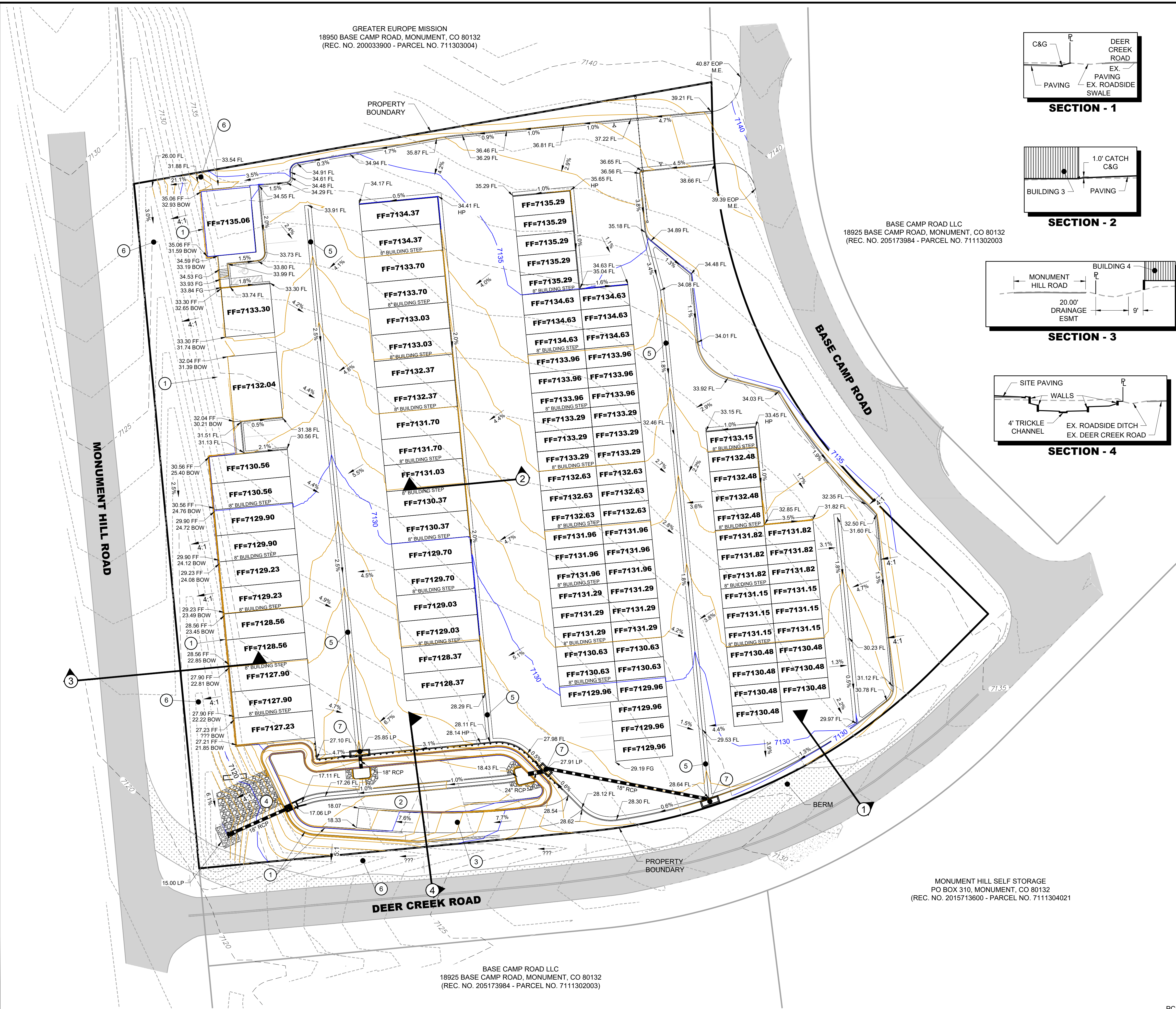
	REQUIRED	PROVIDED
GENERAL SPACES (1/200 SF OFFICE)	12	12
ACCESSIBLE SPACES (INCLUSIVE OF GENERAL)	1	1
MINI WAREHOUSE (1/100 UNITS)	2	2
VEHICLE STORAGE	3	3
EMPLOYEE (1/EMPLOYEE)	1	1
TOTAL PARKING	18	18

SHEET INDEX

- 1 CS COVER SHEET
- 2 SP SITE AND UTILITY PLAN
- 3 GR GRADING PLAN
- 4 L1 SITE LANDSCAPE PLAN
- 5 L2 LANDSCAPE DETAILS
- 6 BD 1 BUILDING ELEVATIONS
- 7 BD 2 OFFICE FLOOR PLANS
- 8 BD 3 STORAGE BUILDINGS
- 9 E-1 ELECTRICAL PHOTOMETRIC PLAN



GREATER EUROPE MISSION
18950 BASE CAMP ROAD, MONUMENT, CO 80132
(REC. NO. 200033900 - PARCEL NO. 711303004)



BASE CAMP ROAD LLC
18925 BASE CAMP ROAD, MONUMENT, CO 80132
(REC. NO. 205173984 - PARCEL NO. 711302003)

MONUMENT HILL SELF STORAGE
PO BOX 310, MONUMENT, CO 80132
(REC. NO. 2015713600 - PARCEL NO. 7111304021)

BASE CAMP ROAD LLC
18925 BASE CAMP ROAD, MONUMENT, CO 80132
(REC. NO. 205173984 - PARCEL NO. 7111302003)

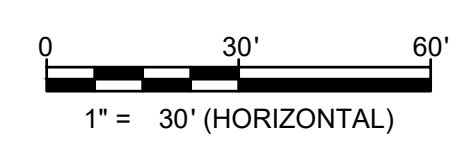
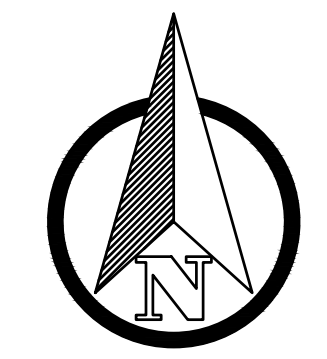


- KEYNOTES:**
- ① RETAINING WALLS
 - ② DETENTION POND
 - ③ DETENTION POND MAINTENANCE ACCESS
 - ④ OUTLET STRUCTURE
 - ⑤ 4' DRAINAGE PAN
 - ⑥ DRAINAGE SWALE
 - ⑦ STORM INLET

- LEGEND:**
- LP = LOW POINT
 - HP = HIGH POINT
 - FL = FLOW LINE
 - TOW = TOP OF WALL
 - BOW = FINISHED GRADE AT BOTTOM FACE OF WALL
 - FF = FINISHED FLOOR
 - FG = FINISHED GROUND
 - 100' PROPOSED MAJOR CONTOUR
 - 100' PROPOSED MINOR CONTOUR
 - 100' EXISTING MAJOR CONTOUR
 - 100' EXISTING MINOR CONTOUR

REV. NO.	DESCRIPTION	DATE
1		
2		
3		
4		
5		
6		
7		
8		
9		
10		
11		
12		
13		
14		
15		
16		
17		
18		
19		
20		
21		
22		
23		
24		
25		
26		
27		
28		
29		
30		
31		
32		
33		
34		
35		
36		
37		
38		
39		
40		
41		
42		
43		
44		
45		
46		
47		
48		
49		
50		
51		
52		
53		
54		
55		
56		
57		
58		
59		
60		
61		
62		
63		
64		
65		
66		
67		
68		
69		
70		
71		
72		
73		
74		
75		
76		
77		
78		
79		
80		
81		
82		
83		
84		
85		
86		
87		
88		
89		
90		
91		
92		
93		
94		
95		
96		
97		
98		
99		
100		

SITE DEVELOPMENT PLAN
MONUMENT STEEL STRUCTURES
GRADING PLAN
18910 BASE CAMP ROAD
MONUMENT, COLORADO



PROJ. NO. SSA
ENG.
CHKD.
DATE: 04/15/2019

SHEET NUMBER
GR
3 OF 9

REV. NO.	DESCRIPTION	DATE
1		06/11/2019
2		
3		
4		
5		
6		
7		
8		
9		
10		
11		
12		
13		
14		
15		
16		
17		
18		
19		
20		

SITE DEVELOPMENT PLAN
MONUMENT STEEL STRUCTURES
LANDSCAPE DETAILS
18910 BASE CAMP ROAD
MONUMENT, COLORADO

PROJ NO: SSA
ENG :
CHKD:
DATE: 04/15/2019

SHEET NUMBER
L2
5 OF 9

PLANT SCHEDULE						
QUAN.	KEY	COMMON NAME	BOTANICAL NAME	SIZE	CONDITION	MATURE SIZE
EVERGREEN TREE						
33	AUS	AUSTRIAN PINE	Pinus nigra	6' HT.	B&B	40'-60'ht x 40'-60'spr.
17	RMJ	ROCKY MOUNTAIN JUNIPER	Juniperus scopulorum	6' HT.	B&B	20'-30'ht x 8'-12'spr.
DECIDUOUS SHRUB						
43	ALP	ALPINE CURRANT	Ribes alpinum'	5 GAL.	CONTAINER	5'ht x 5'spr.
CLUMP/ ORNAMENTAL GRASS						
40	RSG	SHENANDOAH RED SWITCH GRASS	Panicum virgatum 'Shenandoah'	1 GAL.	CONTAINER	1'-2'ht x 1.5'-2'spr.

LANDSCAPE NOTES

- ALL WORK SHALL CONFORM TO LOCAL CITY AND COUNTY CODES. ALL WORK SHALL BE IN ACCORDANCE WITH OSHA CODES AND STANDARDS. NOTHING INDICATED ON THE LANDSCAPE DRAWINGS SHALL RELIEVE THE CONTRACTOR FROM COMPLYING WITH ANY APPROPRIATE SAFETY REGULATIONS.
- THE OWNER, SUCCESSORS, AND ASSIGNS SHALL BE RESPONSIBLE FOR THE INSTALLATION, MAINTENANCE, AND REPLACEMENT OF ALL LANDSCAPING MATERIALS SHOWN OR INDICATED ON THE APPROVED SITE PLAN OR LANDSCAPE PLANS ON FILE WITH THE CITY PLANNING DEPARTMENT. ALL LANDSCAPING SHALL BE INSTALLED AS SHOWN ON THE LANDSCAPE PLANS PRIOR TO THE ISSUANCE FOR THE CERTIFICATE OF OCCUPANCY.
- CONTRACTOR SHALL VERIFY (CALL FOR UTILITY LOCATES) LOCATION OF ALL EXISTING UTILITIES AND STRUCTURES PRIOR TO EXCAVATION OR TRENCHING.
- CONTRACTOR IS RESPONSIBLE FOR THE REPAIR OF ANY SETTLING DUE TO EXCAVATION AND TRENCHING.
- CONTRACTOR SHALL PROTECT AND PRESERVE ALL EXISTING ADJACENT PROPERTY'S AMENITIES/ IMPROVEMENTS, UNLESS OTHERWISE NOTED.
- CONTRACTOR SHALL BE RESPONSIBLE FOR REPLACEMENT OF ANY DAMAGE DUE TO PROJECT'S CONSTRUCTION. CONTRACTOR SHALL BE RESPONSIBLE FOR THE COST OF REPAIR TO UTILITIES, ADJACENT LANDSCAPE, AND THE SUBCONTRACTOR'S OPERATIONS DURING CONSTRUCTION AND/ OR THE SPECIFIED MAINTENANCE PERIOD. THE CONTRACTOR SHALL FULLY COMPENSATE THE OWNER FOR ANYTHING DISTURBED AND/ OR DESTROYED THAT IS NOT DESIGNATED FOR DEMOLITION.
- ALL UTILITY EASEMENTS SHALL REMAIN UNOBSTRUCTED AND FULLY ACCESSIBLE ALONG THEIR ENTIRE LENGTH FOR USE OF MAINTENANCE EQUIPMENT ENTRY.
- SEE CIVIL ENGINEER'S DRAWINGS FOR GRADING AND DRAINAGE, EROSION CONTROL, PAVING AND SLEEVES, UTILITIES, AND OTHER ENGINEERED DETAILS.
- ALL LANDSCAPE AREAS SHALL RECEIVE SOIL PREPARATION AT A RATE OF (3) THREE CUBIC YARDS PER 1,000 SQUARE FEET. PRIOR TO LANDSCAPE INSTALLATION A SOILS TEST SHALL BE PERFORMED TO DETERMINE THE SPECIFICS OF THE SOIL AMENDMENT FOR TURF AREAS.
- STEEL EDGER SHALL BE PROVIDED AROUND ALL PLANTING BEDS ADJACENT TURF AREAS. EDGER SHALL BE GALVANIZED STEEL, ROLLED TOP EDGE, AND INTERLOCKING. EDGER IS NOT NECESSARY ADJACENTLY-PARALLEL TO CURBS, WALLS, AND WALKS.
- ALL PLANTING BEDS TO BE MULCHED WITH 3" DEPTH SHREDDED CEDAR MULCH FOR ANNUALS, OR OTHER MULCHES AS NOTED. APPLY A PRE-EMERGENT HERBICIDE IN BED AREAS.
- ALL PLANTS OF THE SAME SPECIES AND SIZE SHALL HAVE MATCHING HEIGHT AND FORM, UNLESS OTHERWISE NOTED. ALL PLANTS SHALL CONFORM TO THE "AMERICAN STANDARD FOR NURSERY STOCK."
- ALL PLANTS SHALL BE PLANTED USING AN EQUALLY SPACED TRIANGULAR PATTERN, UNLESS OTHERWISE NOTED AND/ OR SHOWN ON THE LANDSCAPE DRAWINGS.
- CONTRACTOR SHALL REPORT ANY DISCREPANCY FOUND IN THE FIELD VERSUS THE LANDSCAPE DRAWINGS IMMEDIATELY TO THE LANDSCAPE ARCHITECT, OWNER'S REPRESENTATIVE, AND/ OR THE CITY/ COUNTY PRIOR TO ANY CONSTRUCTION OR DEMOLITION ACTIVITY. FAILURE TO MAKE SUCH CONFLICTS KNOWN WILL RESULT IN THE CONTRACTOR'S LIABILITY TO RELOCATE OR REPAIR.
- THE FINAL LOCATION OF ALL PLANTS SHALL BE SUBJECT TO THE APPROVAL OF THE OWNER'S REPRESENTATIVE PRIOR TO INSTALLATION.
- CONTRACTOR SHALL PROVIDE AT LEAST A ONE YEAR WARRANTY FOR ALL PLANT MATERIAL FROM THE DATE OF FINAL INSPECTION, UNLESS OTHERWISE DIRECTED BY LANDSCAPE ARCHITECT, OWNER, OR CITY/ COUNTY.
- FOR TREES NOT IN PLANTING BEDS, ALLOW A 4'-0" DIAMETER BED (TREE RING) WITHOUT SOD AROUND ROOT COLLAR. APPLY 3" DEPTH SHREDDED CEDAR MULCH AROUND COLLAR FOLLOWING SOD INSTALLATION. NO LANDSCAPE FABRIC OR EDGER IS NECESSARY FOR TREE RINGS.
- ALL TURF AREAS (SOD) SHALL BE SPRAY IRRIGATED. ALL PLANTING BEDS AND TREES SHALL BE DRIP IRRIGATED. ALL IRRIGATION SHALL BE AN AUTOMATIC UNDERGROUND SYSTEM. NATIVE SEED AREAS TO BE IRRIGATED UNTIL ESTABLISHED.
- IRRIGATION TO BE DESIGN/BUILD BY CONTRACTOR BASED ON MODIFICATION OR REPLACEMENT OF EXISTING IRRIGATION SYSTEM CONTRACTOR TO PROVIDE AN "AS BUILT" DRAWING TO THE PINERY HOA.
- CONTRACTOR TO INCLUDE A ONE YEAR MAINTENANCE PROPOSAL TO THE PINERY HOA FOR REVIEW AND APPROVAL.

NATIVE SEED MIX

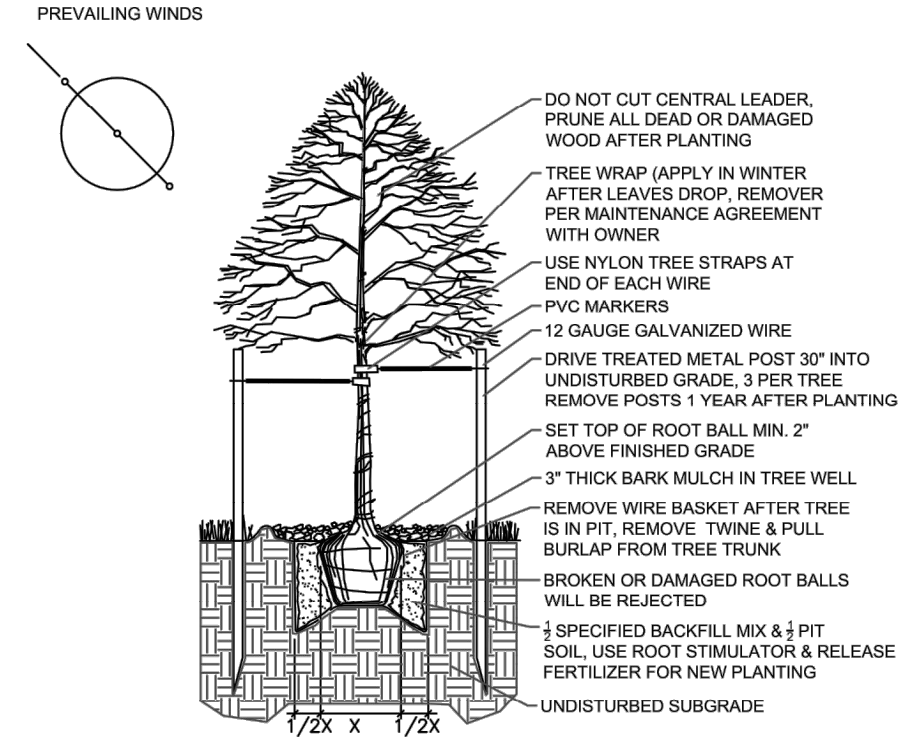
NATIVE SEED MIX - LOW GROW SEED MIX ARKANSAS VALLEY SEED CO. 303-320-7500

- 30% EPHRAIM CRESTED WHEAT GRASS
- 25% SHEEP FESCUE
- 20% PERENNIAL RYE
- 15% CHEWINGS FESCUE
- 10% CANADA BLUEGRASS

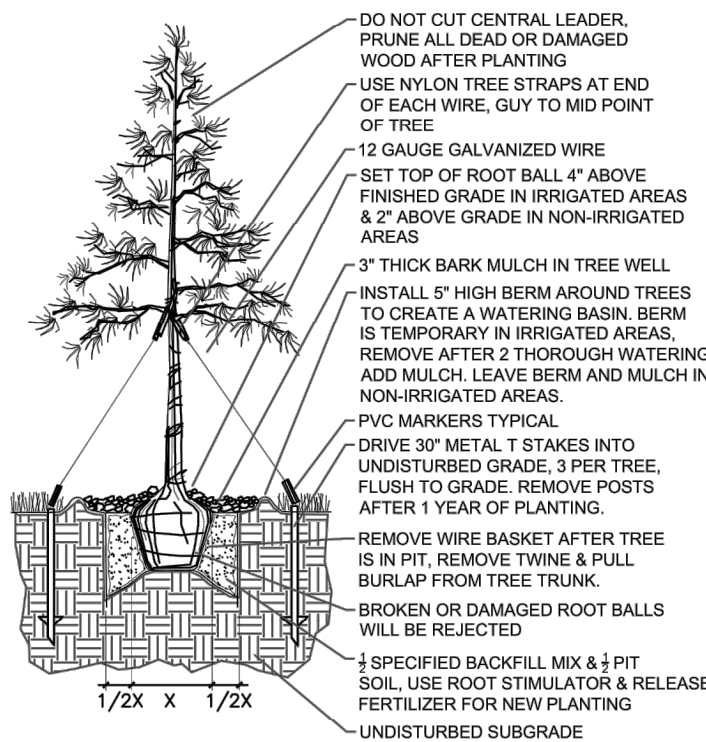
NON-IRRIGATED, HAND WATER DURING SUMMER MONTHS FOR FIRST THREE GROWING SEASONS UNTIL ESTABLISHED.

SEED MIX RATE - 25 POUNDS PER ACRE

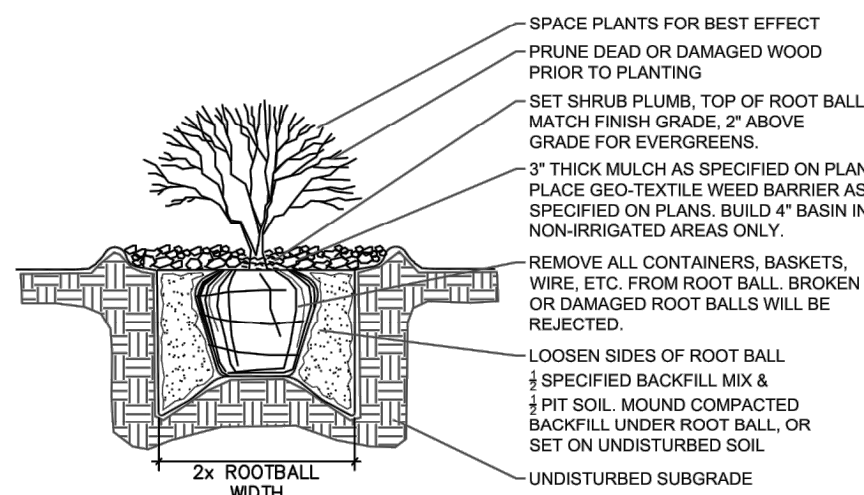
SEE SEEDING APPLICATION SPECIFICATIONS SHEET L-6
APPLY BIOSOL FORTE PRIOR TO SEEDING SEE NOTE SHEET L-6



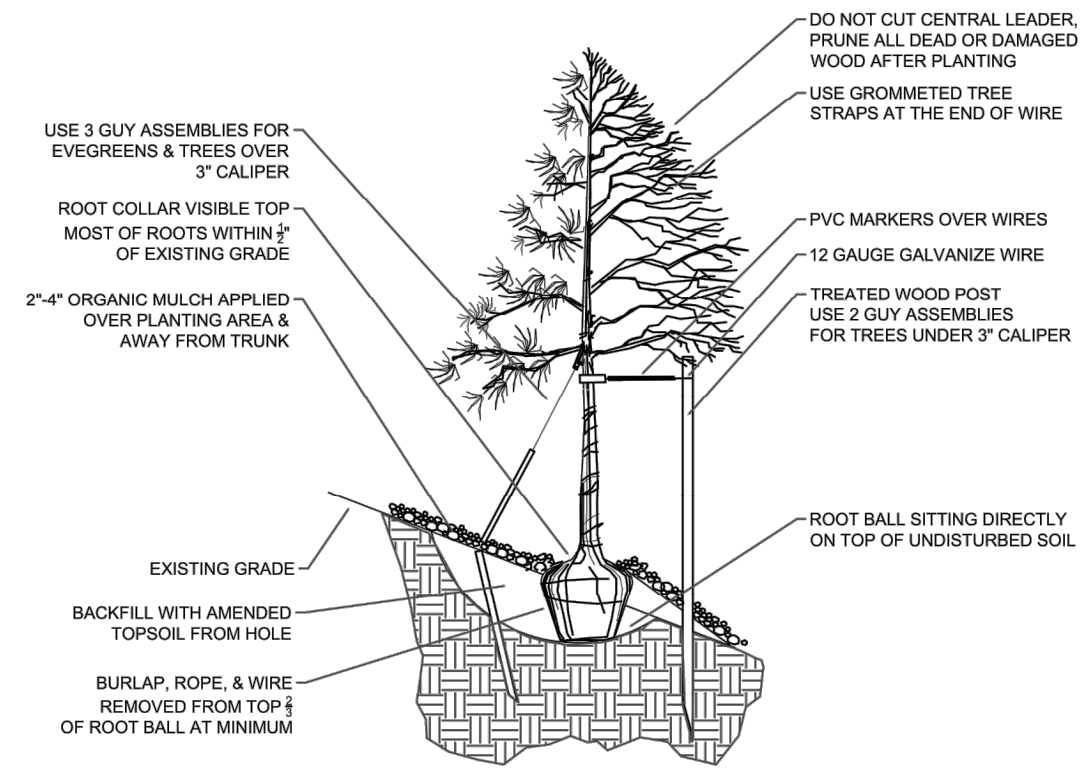
1
L.3
Deciduous Tree Planting Detail



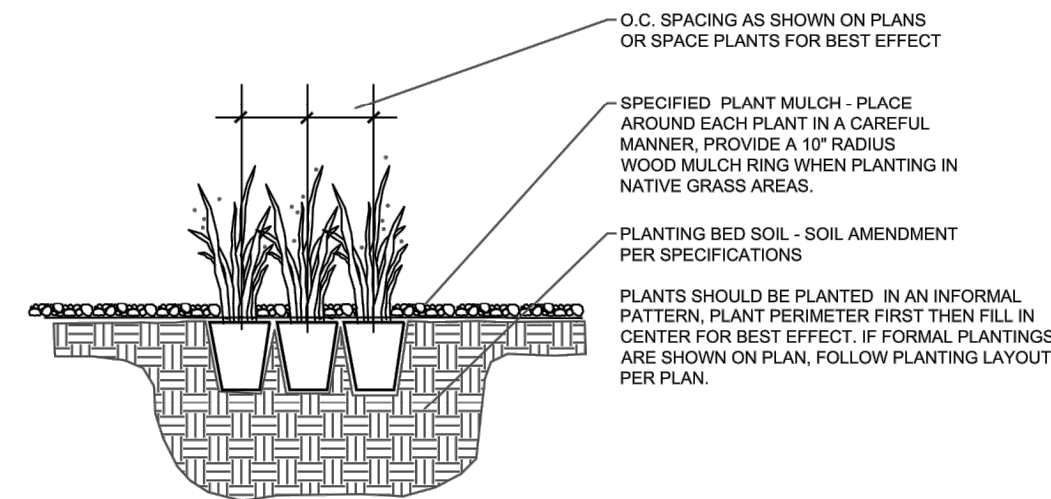
2
L.3
Evergreen Tree Planting Detail



3
L.3
Shrub Planting Detail

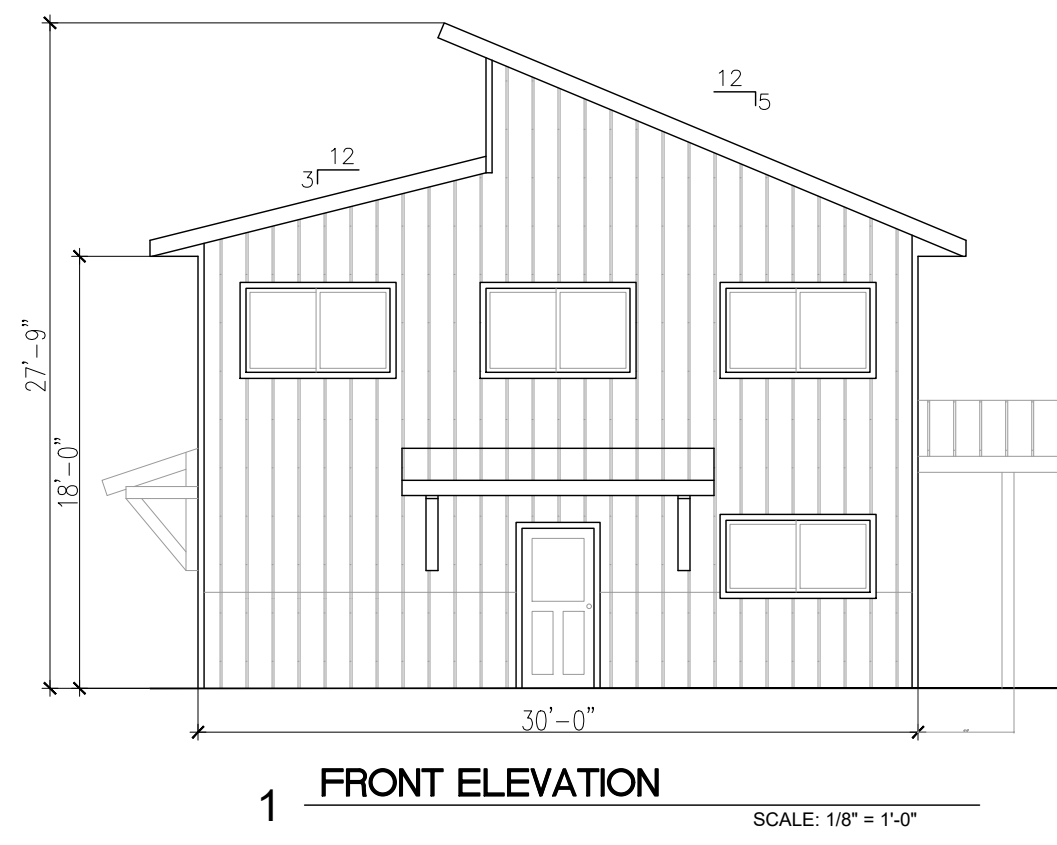


4
L.3
Tree Planting Detail - Steep Slopes



5
L.3
Perennial/Grass Planting Detail

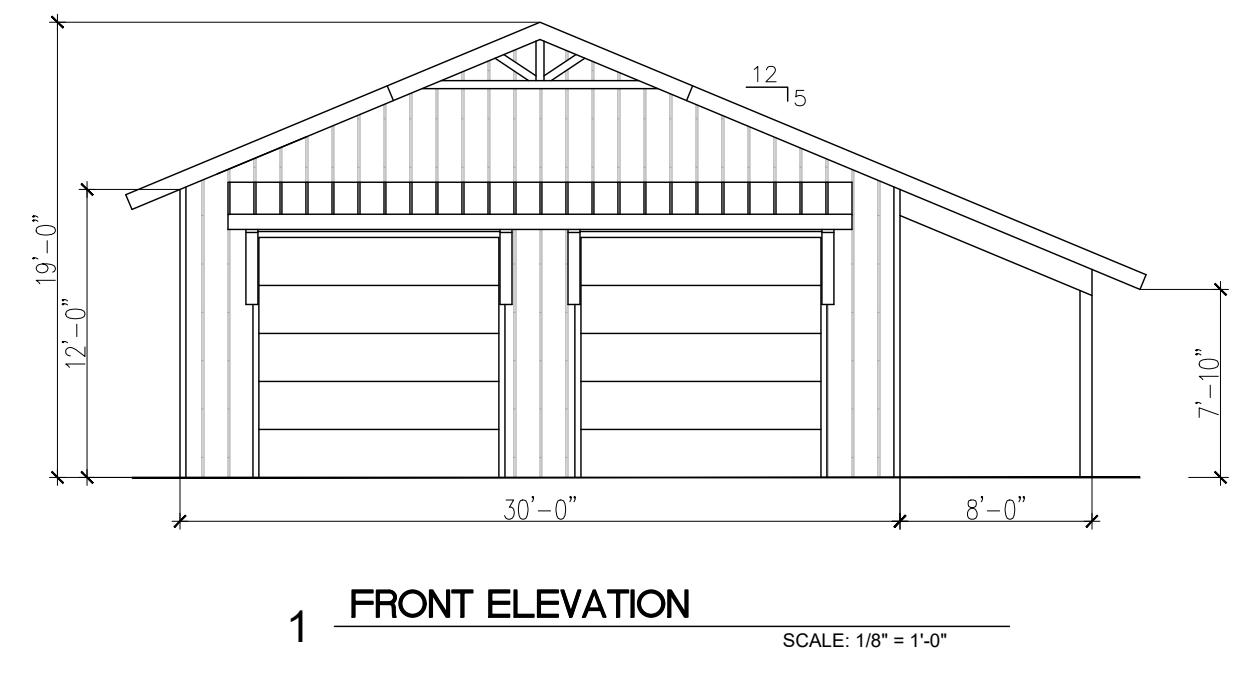




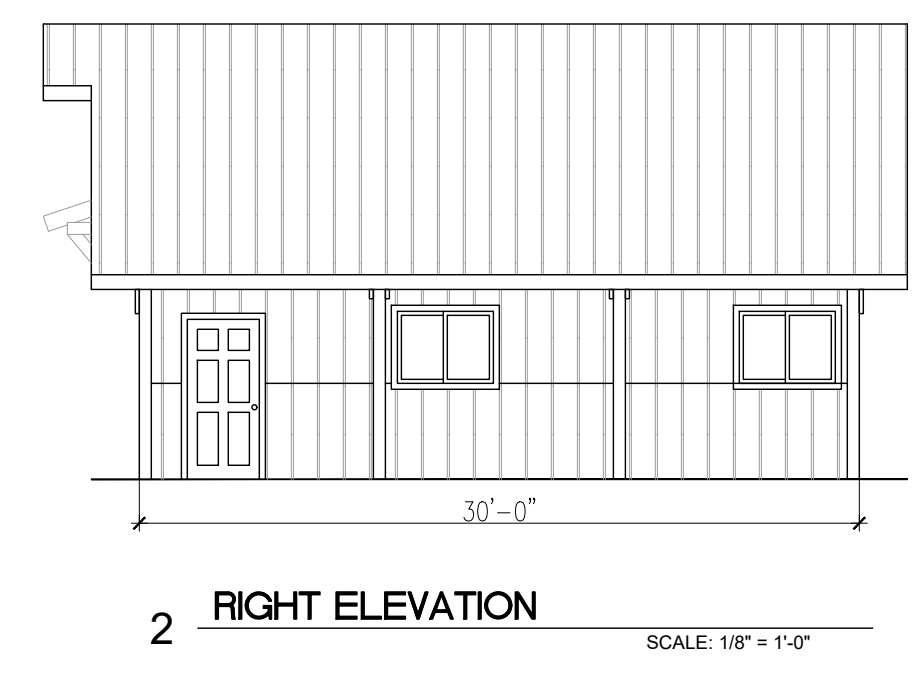
1 FRONT ELEVATION SCALE: 1/8" = 1'-0"



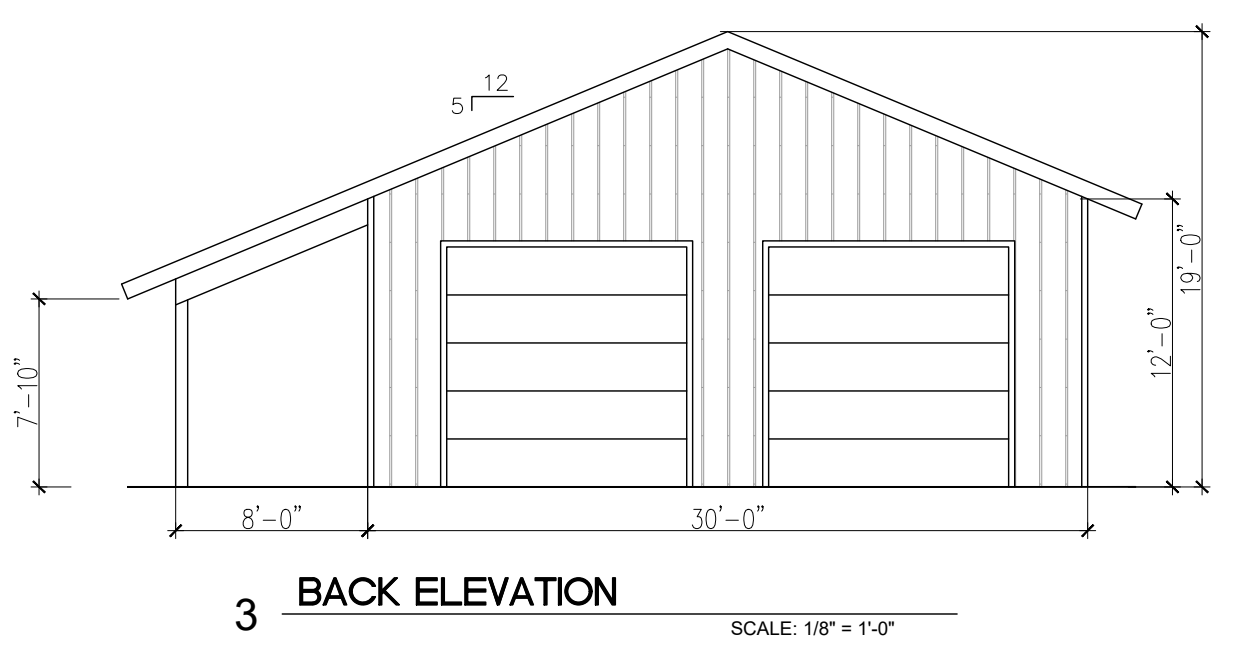
2 RIGHT ELEVATION SCALE: 1/8" = 1'-0"



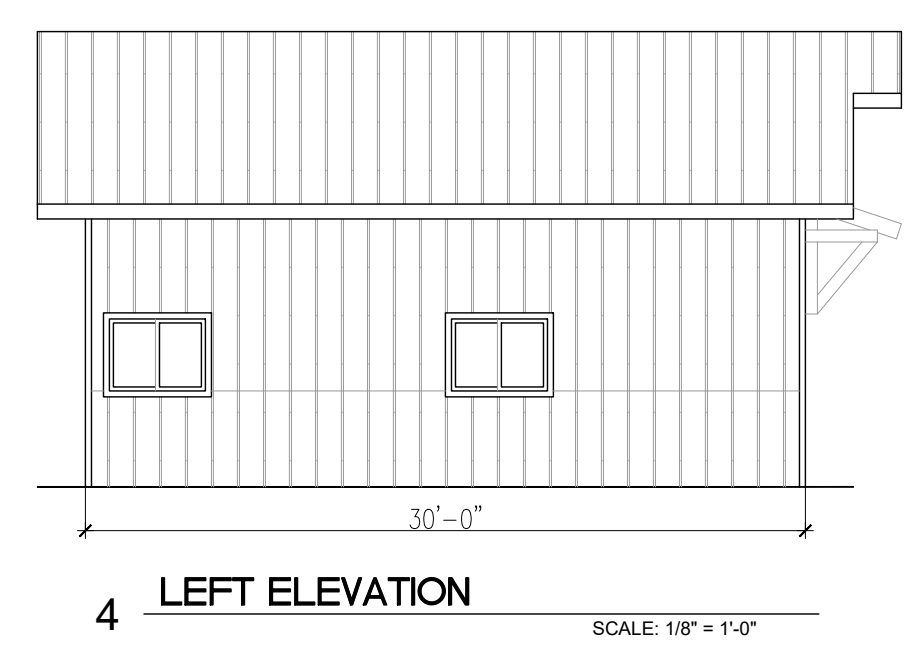
1 FRONT ELEVATION SCALE: 1/8" = 1'-0"



2 RIGHT ELEVATION SCALE: 1/8" = 1'-0"

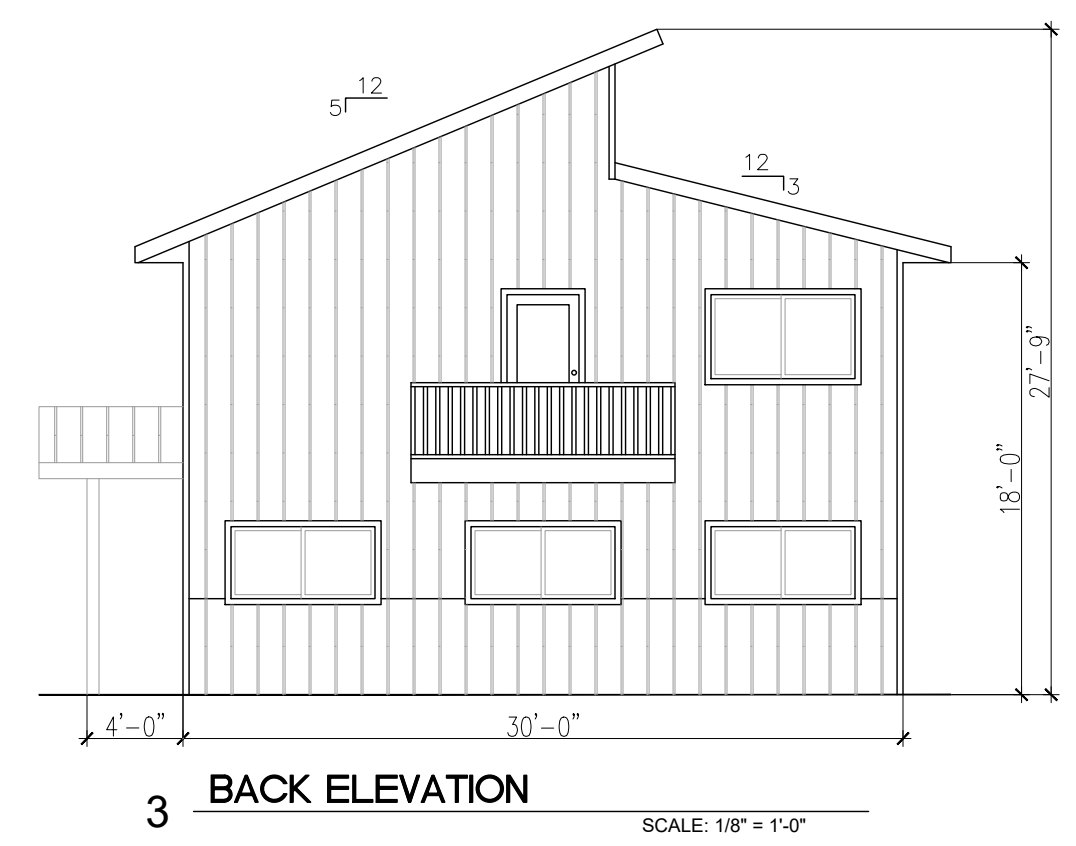


3 BACK ELEVATION SCALE: 1/8" = 1'-0"

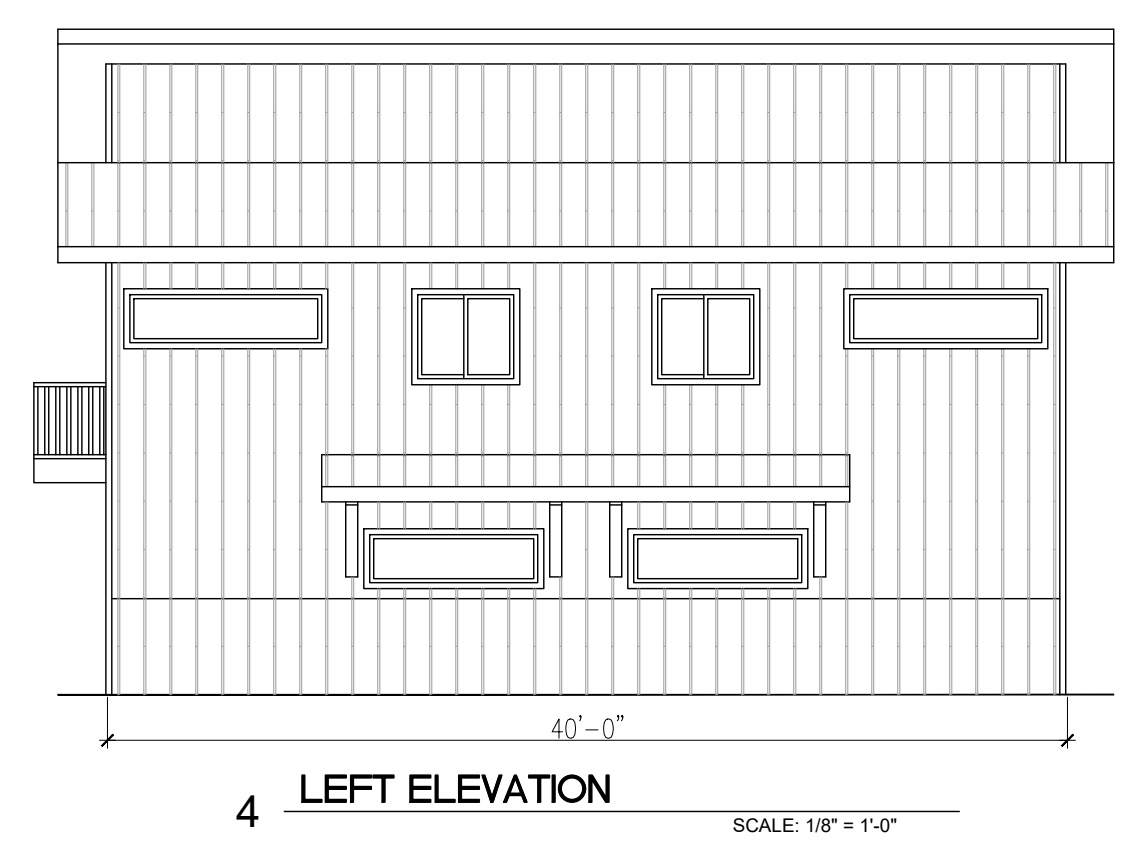


4 LEFT ELEVATION SCALE: 1/8" = 1'-0"

DISPLAY SHOW BUILDING #1

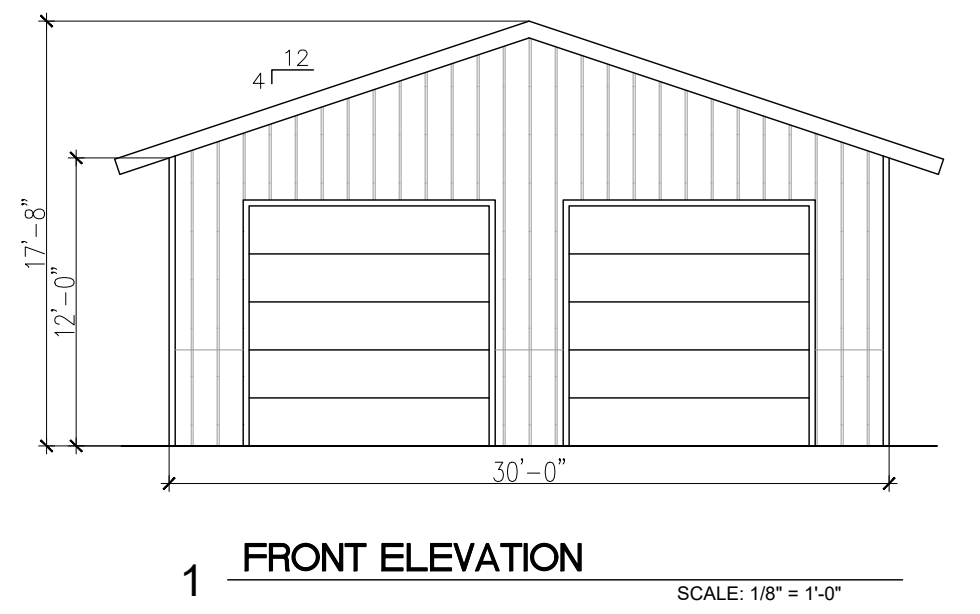


3 BACK ELEVATION SCALE: 1/8" = 1'-0"

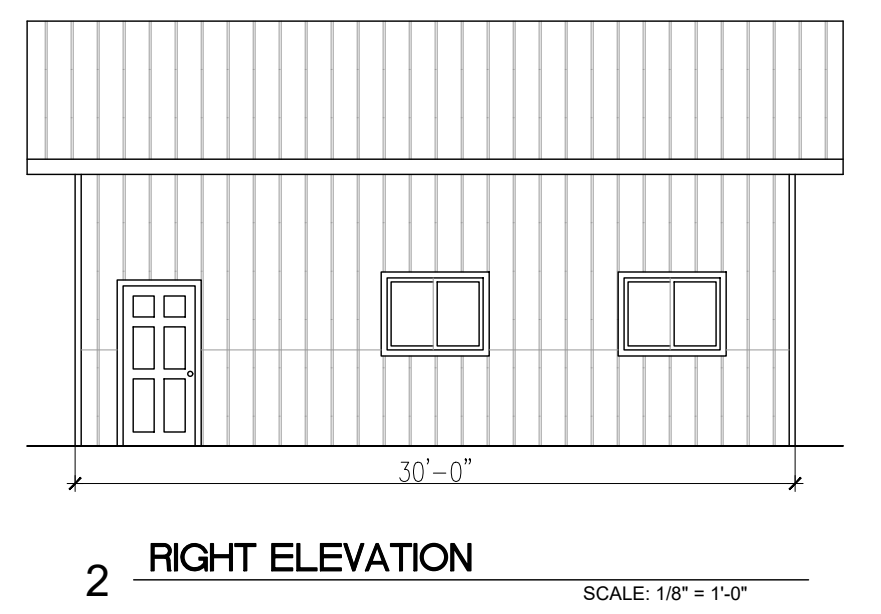


4 LEFT ELEVATION SCALE: 1/8" = 1'-0"

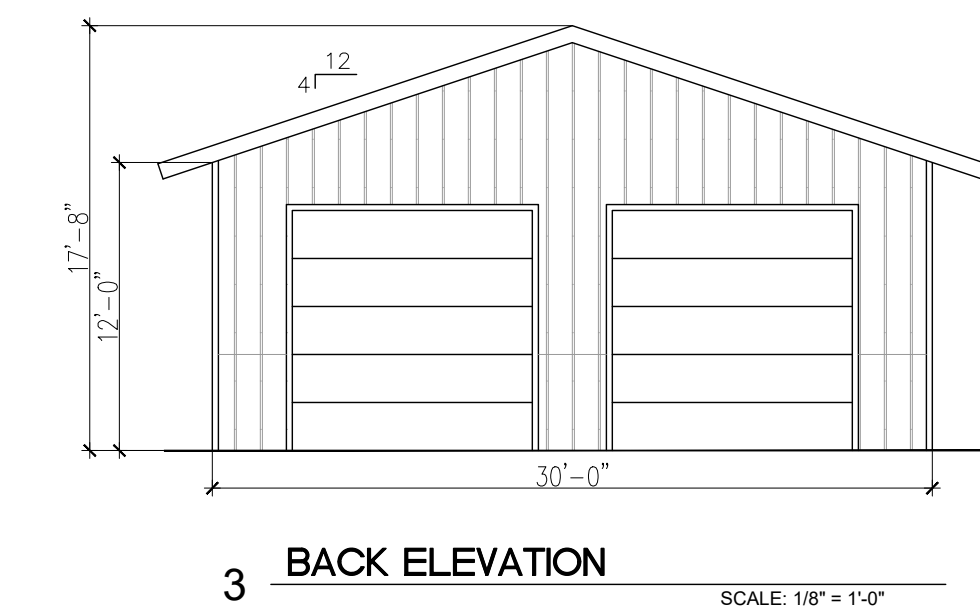
MONUMENT MINI STORAGE OFFICE



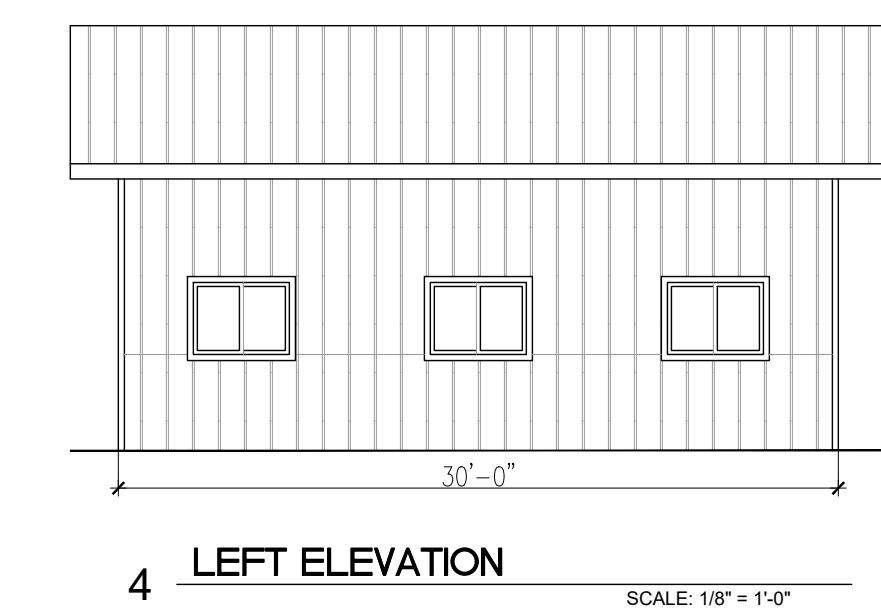
1 FRONT ELEVATION SCALE: 1/8" = 1'-0"



2 RIGHT ELEVATION SCALE: 1/8" = 1'-0"



3 BACK ELEVATION SCALE: 1/8" = 1'-0"



4 LEFT ELEVATION SCALE: 1/8" = 1'-0"

DISPLAY SHOW BUILDING #2



REV. NO.	DESCRIPTION	DATE
1		
2		
3		
4		
5		
6		
7		
8		
9		
10		
11		
12		
13		
14		
15		
16		
17		
18		
19		
20		
21		
22		
23		
24		
25		
26		
27		
28		
29		
30		

SITE DEVELOPMENT PLAN
MONUMENT STEEL STRUCTURES
 BUILDING ELEVATIONS
 18910 BASE CAMP ROAD
 MONUMENT, COLORADO

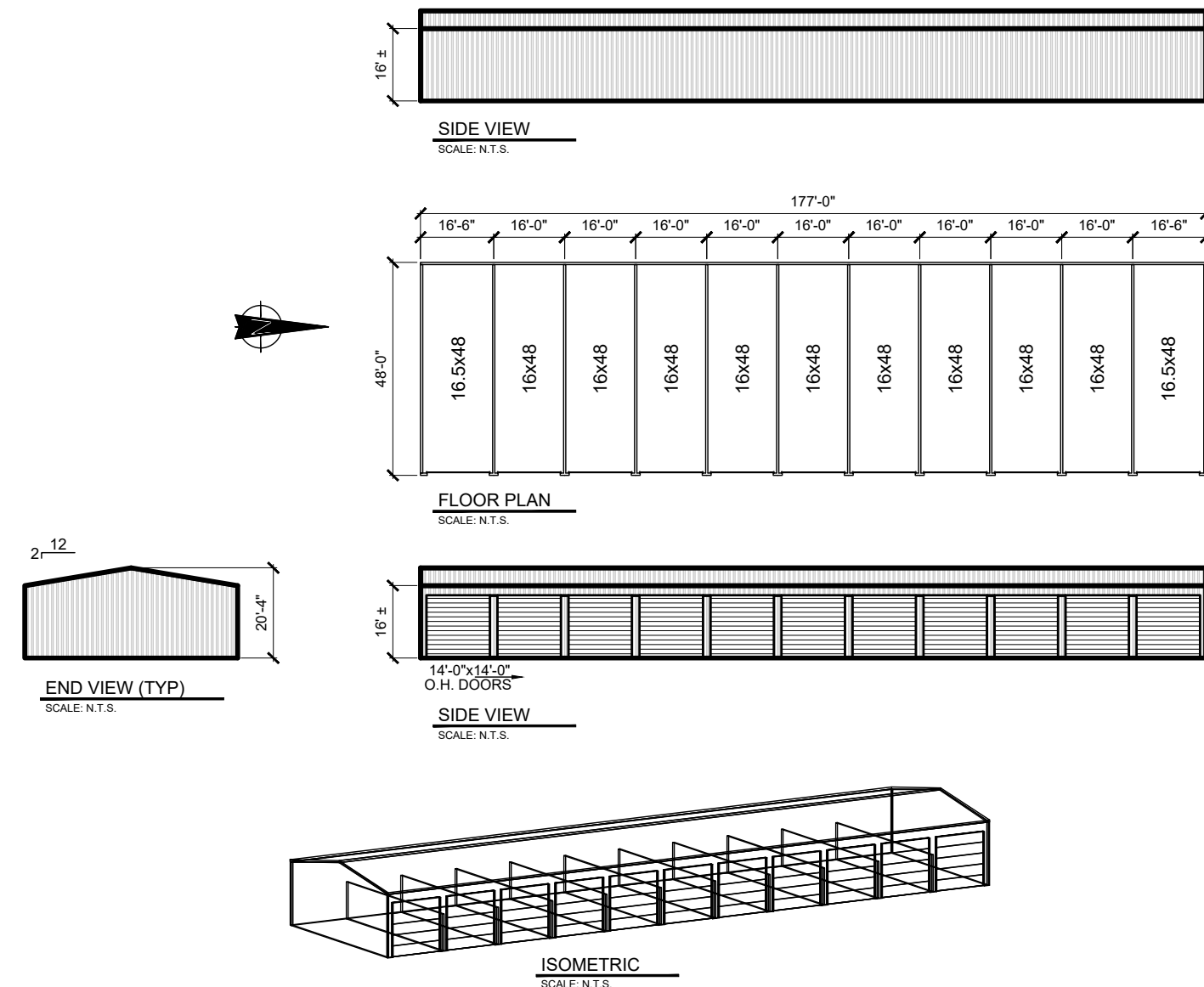
PROJ NO: SSA
 ENG:
 CHKD:
 DATE: 04/15/2019

SHEET NUMBER
BD 1
 6 OF 9

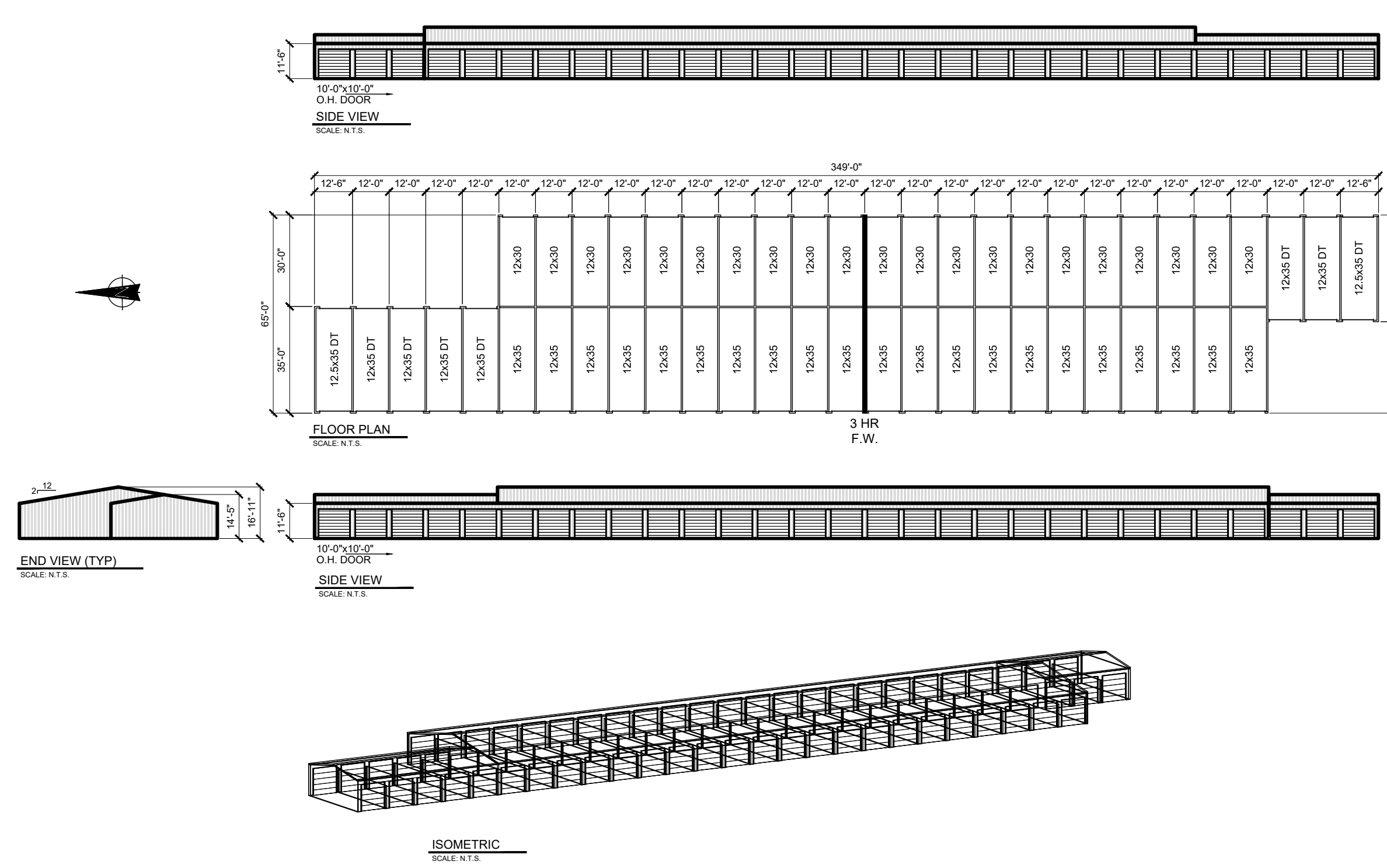


P:\Steel Structures - Monument, CO\13 - Design\Revised\11-24-2019 Development Plans (SSP)\Arch DWG\Elevs_6/23/2019 4:10:35 PM.dwg, revision: 1, 1

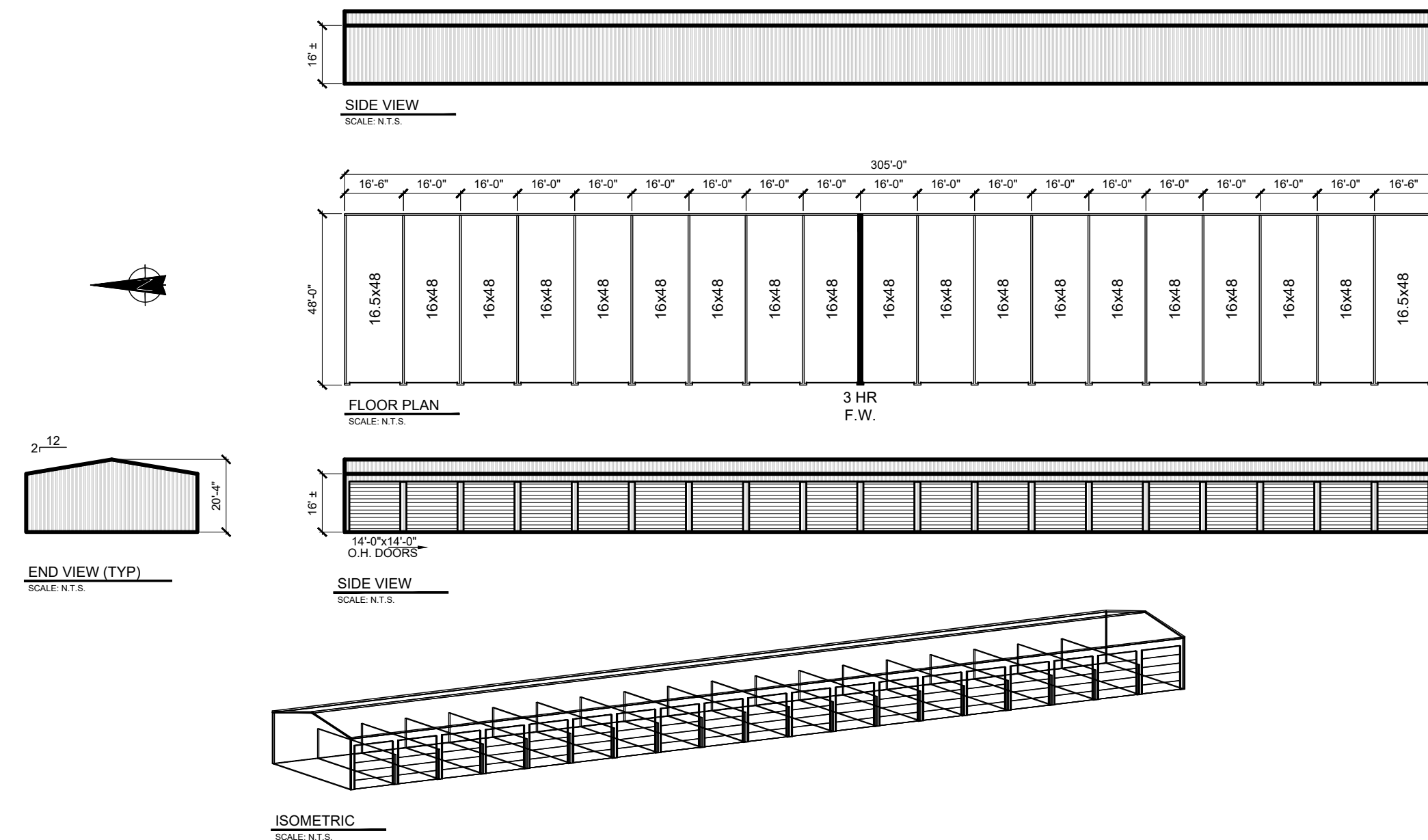
BUILDING 1



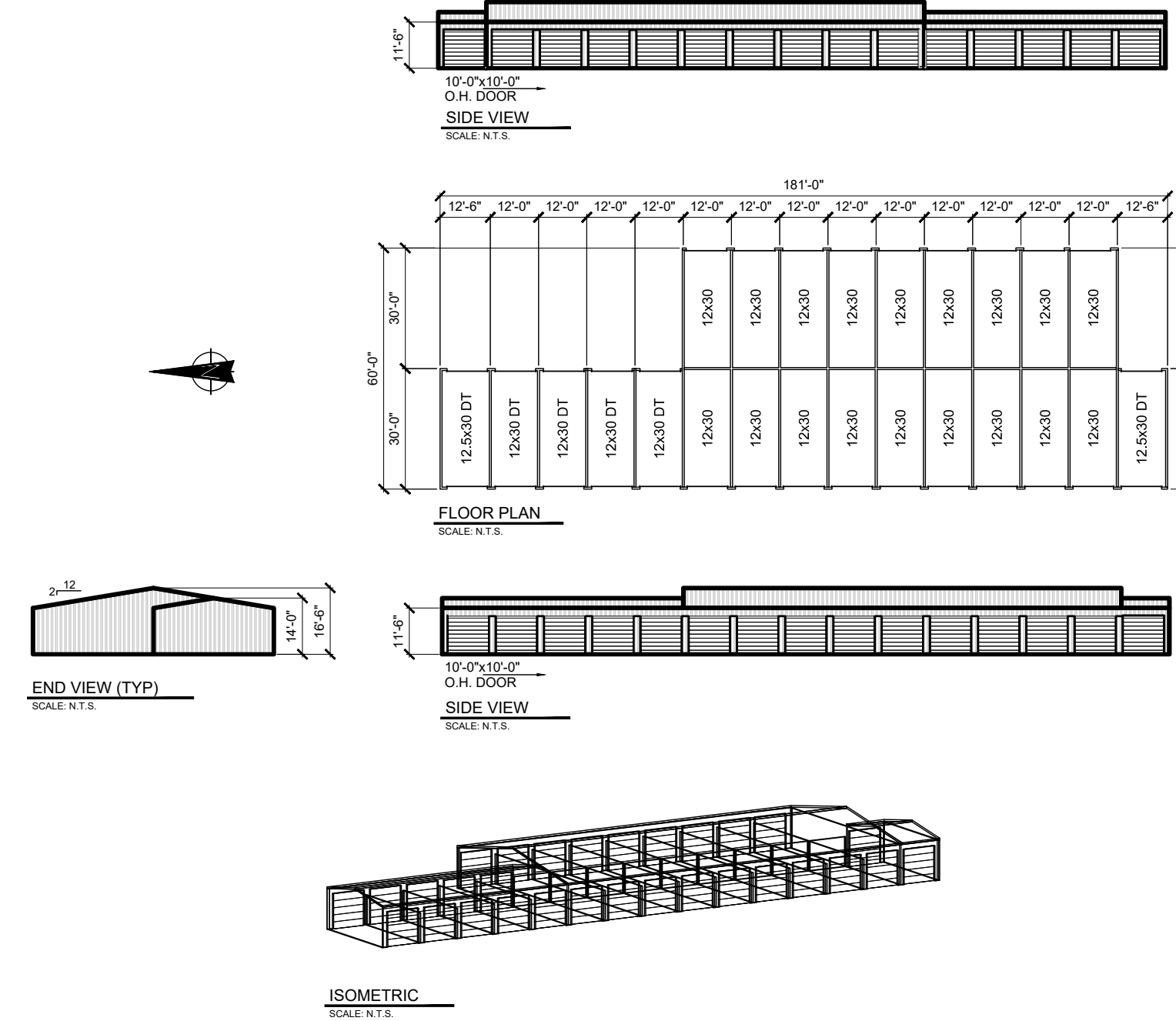
BUILDING 3



BUILDING 2



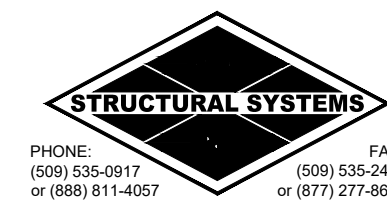
BUILDING 4



TERRA FORMA
SOLUTIONS

REV. NO.	DESCRIPTION	DATE
1	REVISIONS PER 1ST SUBMITTAL COMMENTS	06/11/2019

SITE DEVELOPMENT PLAN
MONUMENT STEEL STRUCTURES
STORAGE BUILDINGS
18910 BASE CAMP ROAD
MONUMENT, COLORADO



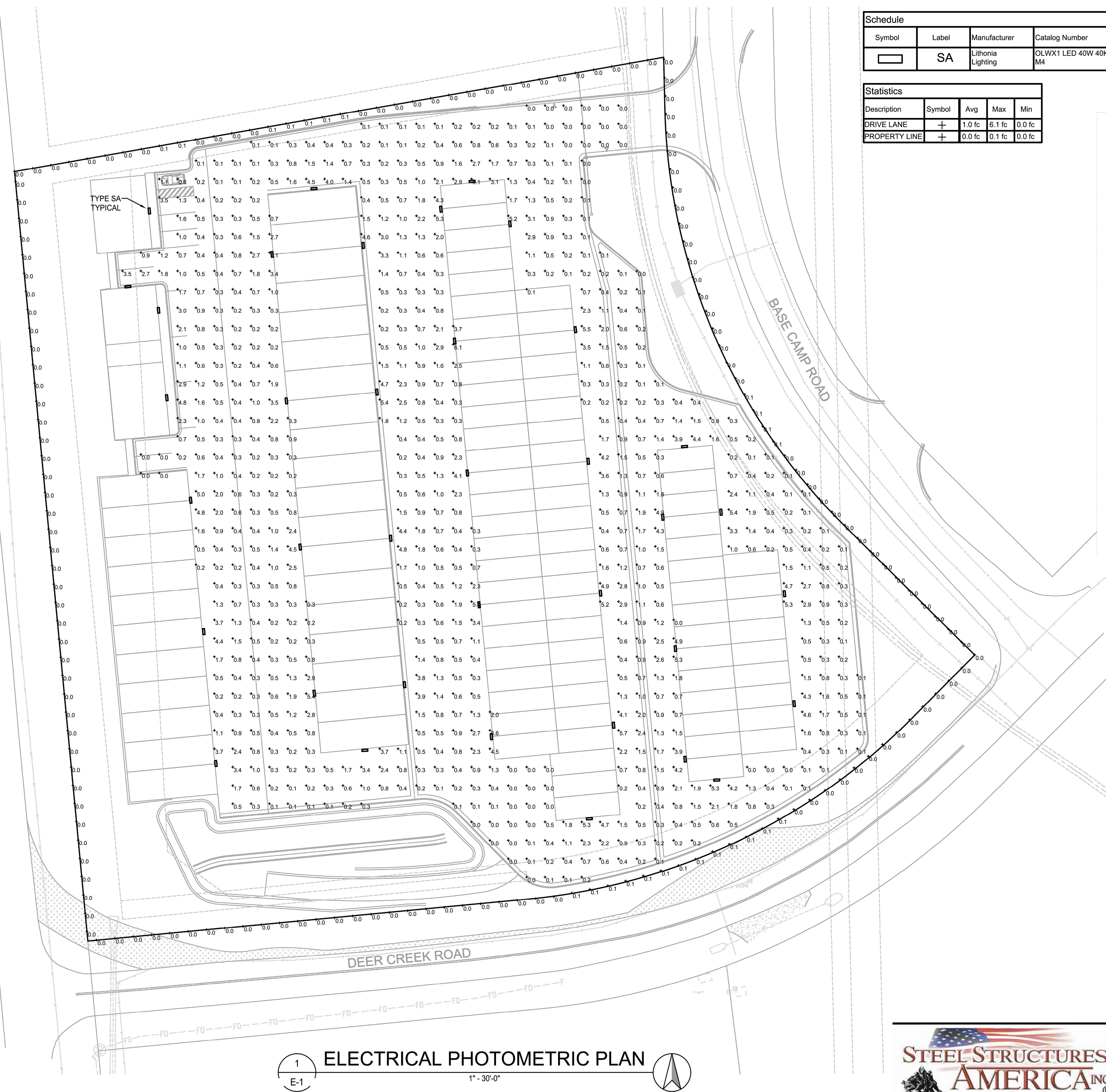
PROJ NO: SSA
ENG:
CHKD:
DATE: 04/15/2019

SHEET NUMBER
BD 3

MONUMENT HILL ROAD

BASE CAMP ROAD

DEER CREEK ROAD



Symbol	Label	Manufacturer	Catalog Number	Description	Lamp	Number Lamps	Lumens Per Lamp	Light Loss Factor	Wattage
□	SA	Lithonia Lighting	OLWX1 LED 40W 40K M4	40W 4000K LED WALL PACK	LED	1	4000	1	38.82

Description	Symbol	Avg	Max	Min
DRIVE LANE	+	1.0 fc	6.1 fc	0.0 fc
PROPERTY LINE	+	0.0 fc	0.1 fc	0.0 fc

Contractor Select™
OLWX LED
Wall Pack

The OLWX LED wall packs are energy saving, long life replacements for traditional metal halide wall packs. The OLWX family is compact and powerful, delivering up to 18,200 lumens. The OLWX1 and OLWX2 offer several mounting options that provide versatility to meet your application's needs.

FEATURES:

- Replaces 70W-400W HID lamps, saves 85% energy
- IP65 rated - perfect for outdoor environments even when shining upward or downward. Back box accessory available for conduit wiring.
- Wide and slip filter accessories - can be used as a wall pack or flood light

Catalog Number	UPC	Description	Replaces Up To	Lumens	Wattage	CCT	Voltage	Finish	Packet Qty
OLWX1 LED 40W 40K M4	8807000015	WALL PACKS	70W METAL HALIDE	5,200	18W	4000K	120-277V	DARK BRONZE	60
OLWX1 LED 20W 40K M4	8807000014	WALL PACKS	70W METAL HALIDE	2,600	20W	4000K	120-277V	DARK BRONZE	60
OLWX1 LED 40W 40K M4	8807000016	WALL PACKS	250W METAL HALIDE	4,879	37W	4000K	120-277V	DARK BRONZE	60
OLWX2 LED 60W 40K 100 M2	8807000018	WALL PACKS	400W METAL HALIDE	15,000	70W	4000K	120-277V	DARK BRONZE	60

Accessories: Order as separate catalog numbers.

- OLWX1S - Splitter - size 1
- OLWX1TK - Knuckle - size 1
- OLWX1S - Splitter - size 2
- OLWX1TK - Knuckle - size 2

Specifications

INTENDED USE:
The versatility of the OLWX1 LED combines a sleek, low profile wall pack design with energy efficient, low maintenance LEDs for replacing up to 400W metal halide fixtures. Mounting accessories are available to convert the OLWX1 LED into an energy efficient flood light. The versatile design of the OLWX2 LED combines a sleek, low profile wall pack and high output LEDs to provide an energy efficient, low maintenance LED wall pack suitable for replacing up to 400W metal halide luminaires. Available Floodlight mounting accessories convert the OLWX2 LED into a highly efficient floodlight.

CONSTRUCTION:
Cast aluminum housing with textured dark bronze powder paint for durability. Integral heat sink optimizes thermal management through conduction and convection cooling. LEDs are protected behind a glass lens. Housing is sealed against moisture and environmental contaminants (IP65 rated). See Lighting Facts label and photometry reports for details.

ELECTRICAL:
Light engine consists of high efficiency Chip On Board (COB) LED with integrated circuit board mounted directly to the housing to maximize heat dissipation and provide long life (L70/B100,000 hours, CRI > 90). Electronic driver has a power factor > 90% and THD < 20% and a minimum 2.5kV surge rating. Flood light mounting accessories include an additional 40k surge protection device. LEDs are available in 4000K and 5000K CCTs.

INSTALLATION:
Early mounts to recessed junction boxes with the included wall mount bracket, or for surface mounting and conduit entry - with the included junction box with flow 1/2" threaded conduit entry hole. Flood light mounting accessories (sold separately) include knuckle, integral splitter and pole mounting options. Each flood mount accessory comes with a top venter and warden guard. Luminaires may be wall or ground mounted in downward or upward orientation.

LIMITINGS:
UL Listed for US and Canadian safety standards for wet locations. Rated for 40° Centimeter ambient. Tested in accordance with ENEC LM-79 and LM-80 standards. Designlight Consortium (DLC) qualified product. Not all versions of the product may be DLC qualified. Please check the DLC Qualified Products List at www.designlight.org to confirm which versions are qualified.

WARRANTY:
5-year limited warranty. Complete warranty terms located at www.lithonia.com/customerresources/terms_and_conditions.aspx.

Note: Actual performance may differ as a result of end user environment and application. Accessories are design or special order. Mounting under laboratory conditions at 25°C. Specifications subject to change without notice.

Dimensions

OLWX1
Width: 7.1/2" (18cm)
Height: 8" (20.3cm)
Depth: 3" (7.6cm)
Weight: 5lb (2.27kg)

OLWX2
Width: 14.1/2" (37cm)
Height: 12.3/8" (31.8cm)
Depth: 5.1/2" (13.9cm)
Weight: 15.4lb (6.9kg)

All dimensions are inches (centimeters) unless otherwise indicated.



1
E-1

ELECTRICAL PHOTOMETRIC PLAN

1" = 30'-0"

REV. NO.	DESCRIPTION	DATE
1		06/11/2019

REVISIONS PER 1ST SUBMITTAL COMMENTS

SITE DEVELOPMENT PLAN
MONUMENT STEEL STRUCTURES
ELECTRICAL PHOTOMETRIC PLAN

18910 BASE CAMP ROAD
MONUMENT, COLORADO

PROJ. NO: SSA

ENG: _____

CHKD: _____

DATE: 04/15/2019

SHEET NUMBER

E-1

9 OF 9

P:\Steel Structures - Monument_COB - Drawings\Research\11-Steel Development Plans (SP)\Lighting Plan.dwg, 6/23/2019 4:10:57 PM, epperson, 1:1

Site Development Plan_v3-redline.pdf Markup Summary

dskendall (3)

Show trash enclosure and a detail of it.

Subject: Text Box
Page Label: [2] 2 SITE AND UTILITY PLAN
Lock: Locked
Author: dskendall
Date: 7/11/2019 9:57:29 AM
Status:
Color: ■
Layer:
Space:

Show trash enclosure and a detail of it.

