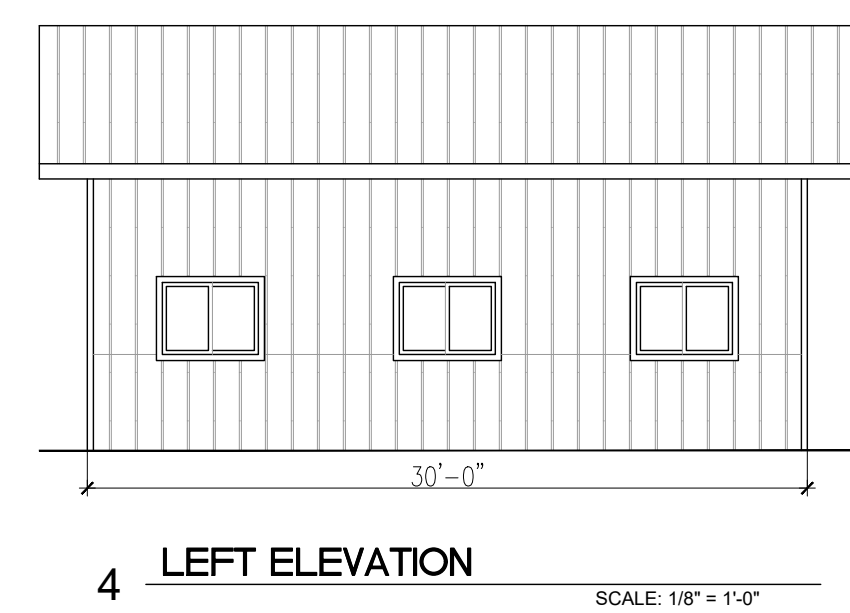
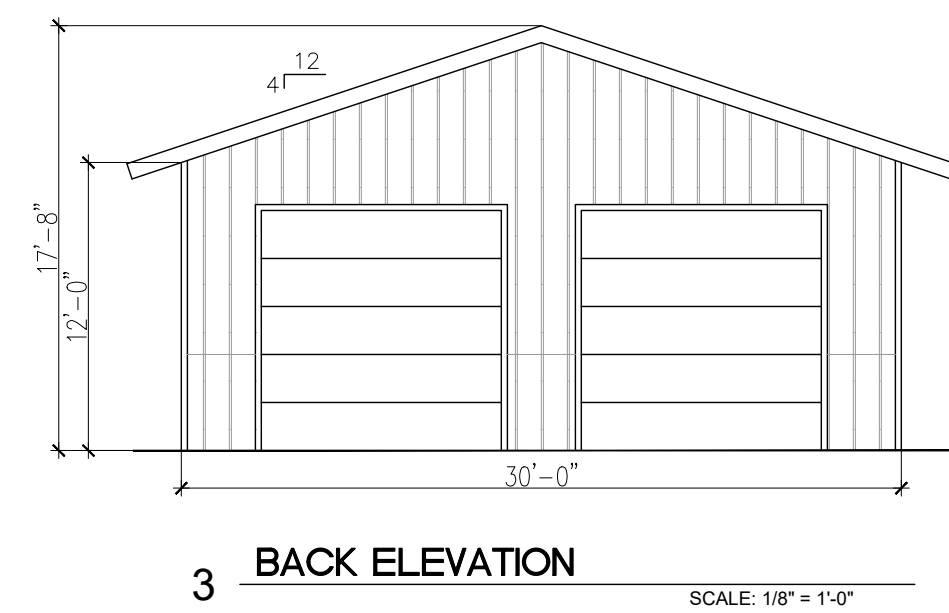
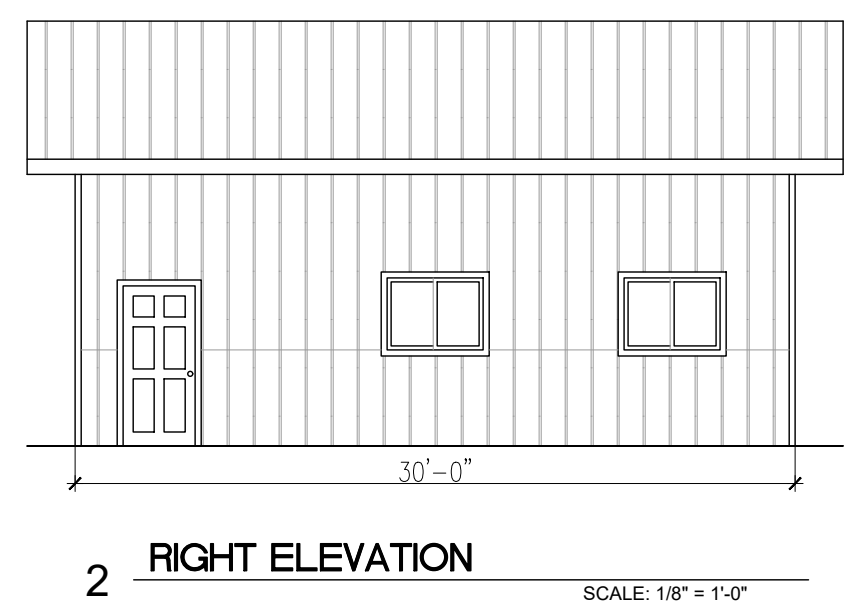
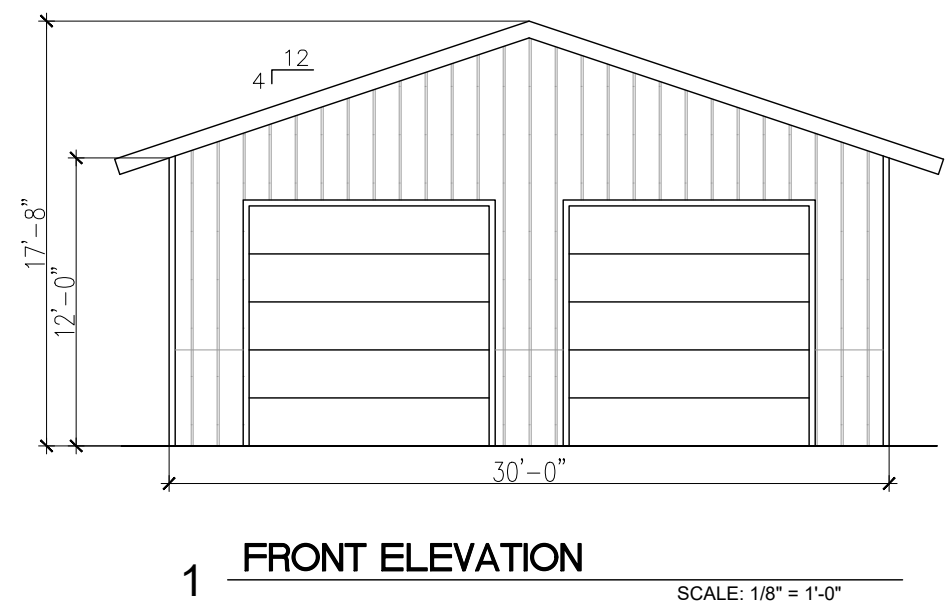


DISPLAY SHOW BUILDING #1

MONUMENT MINI STORAGE OFFICE



DISPLAY SHOW BUILDING #2



REV. NO.	DESCRIPTION	DATE
1		
2		
3		
4		
5		
6		
7		
8		
9		
10		
11		
12		
13		
14		
15		
16		
17		
18		
19		
20		
21		
22		
23		
24		
25		
26		
27		
28		
29		
30		
31		
32		
33		
34		
35		
36		
37		
38		
39		
40		
41		
42		
43		
44		
45		
46		
47		
48		
49		
50		
51		
52		
53		
54		
55		
56		
57		
58		
59		
60		
61		
62		
63		
64		
65		
66		
67		
68		
69		
70		
71		
72		
73		
74		
75		
76		
77		
78		
79		
80		
81		
82		
83		
84		
85		
86		
87		
88		
89		
90		
91		
92		
93		
94		
95		
96		
97		
98		
99		
100		

SITE DEVELOPMENT PLAN
MONUMENT STEEL STRUCTURES
 BUILDING ELEVATIONS
 18910 BASE CAMP ROAD
 MONUMENT, COLORADO



PROJ NO. SSA
ENG :
CHKD:
DATE 04/15/2019

SHEET NUMBER

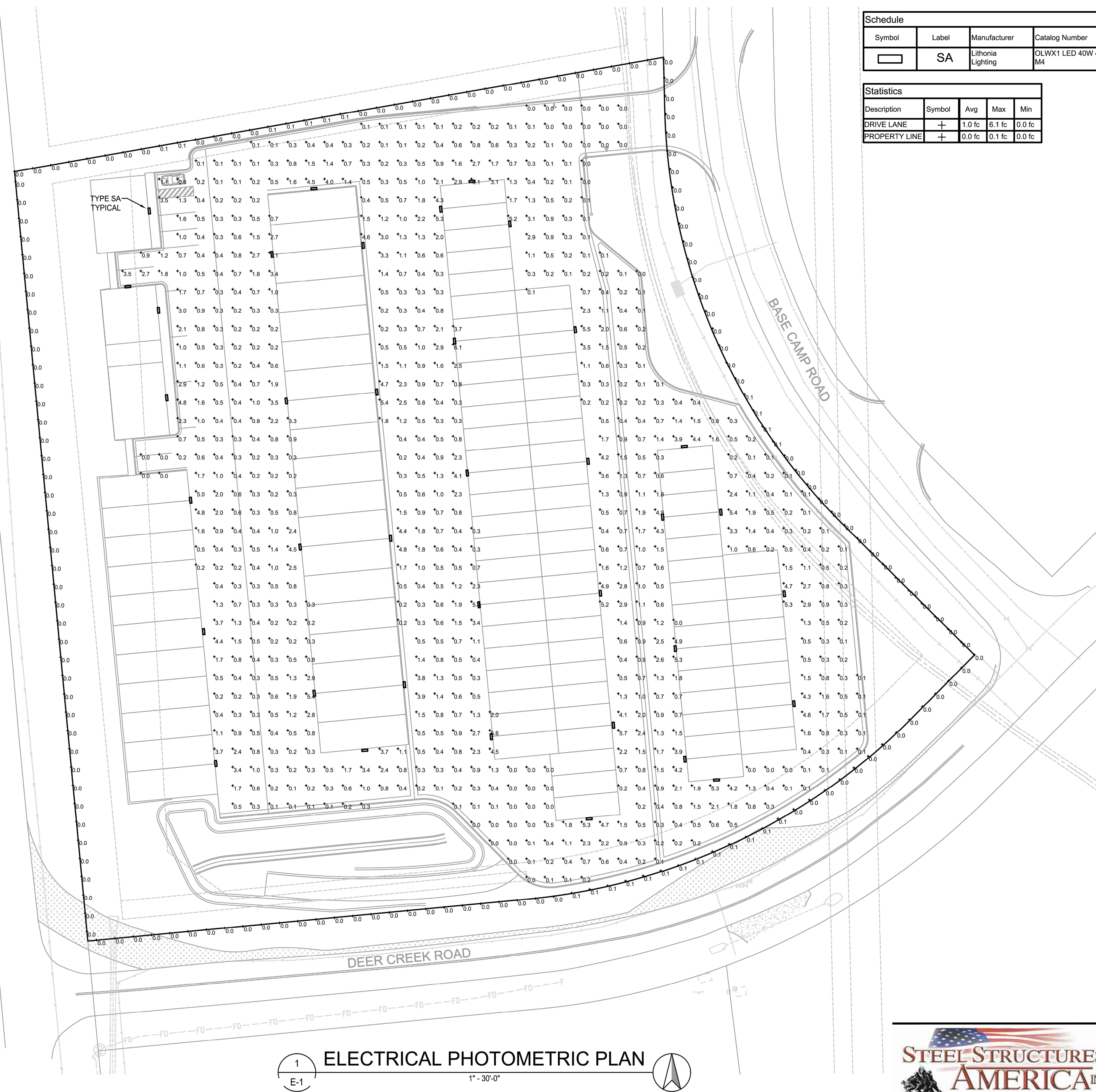
BD 1

P:\Steel Structures - Monument, CO\13 - Drawings\Revise\11-24-2019 Development Plans (SSP)\Arch DWG\Elevs_6/23/2019 4:10:35 PM.dwg, revision: 1, 1

MONUMENT HILL ROAD

BASE CAMP ROAD

DEER CREEK ROAD



Symbol	Label	Manufacturer	Catalog Number	Description	Lamp	Number Lamps	Lumens Per Lamp	Light Loss Factor	Wattage
□	SA	Lithonia Lighting	OLWX1 LED 40W 40K M4	40W 4000K LED WALL PACK	LED	1	4000	1	38.82

Description	Symbol	Avg	Max	Min
DRIVE LANE	+	1.0 fc	6.1 fc	0.0 fc
PROPERTY LINE	+	0.0 fc	0.1 fc	0.0 fc

CONTRACTOR SELECT

LITHONIA LIGHTING

Contractor Select™
OLWX LED
Wall Pack

Cont. Number: _____
Rev: _____
Type: _____

The OLWX LED wall packs are energy saving, long life replacements for traditional metal halide wall packs. The OLWX family is compact and powerful, delivering up to 18,200 lumens. The OLWX1 and OLWX2 offer several mounting options that provide versatility to meet your application's needs.

FEATURES:

- Replaces 70W-400W HID lamps, saves 85% energy
- IP65 rated - perfect for outdoor environments even when shining upward or downward. Back box accessory available for retrofit wiring.
- Wide and slip filter accessories - can be used as a wall pack or flood light

Catalog Number	UPC	Description	Replaces Up To	Lumens	Wattage	CCT	Voltage	Finish	Fixture #/2
OLWX1 LED 40W 40K M4	8807000015	WALL PACKS	70W METAL HALIDE	5,200	14W	4000K	120-277V	DARK BRONZE	60
OLWX1 LED 20W 40K M4	8807000014	WALL PACKS	70W METAL HALIDE	2,600	7W	4000K	120-277V	DARK BRONZE	60
OLWX1 LED 40W 40K M4	8807000016	WALL PACKS	250W METAL HALIDE	4,879	37W	4000K	120-277V	DARK BRONZE	60
OLWX2 LED 60W 40K 100 M2	8807000018	WALL PACKS	400W METAL HALIDE	15,000	70W	4000K	120-277V	DARK BRONZE	60

Accessories: Order as separate catalog numbers.

OLWX1TK	Slipfilter - size 1
OLWX1TK	Wide - size 1
OLWX1TK	Wide - size 2
OLWX2TK	Wide - size 2

CONTRACTOR SELECT OLWX LED Page 1 of 2

CONTRACTOR SELECT

LITHONIA LIGHTING

Specifications

INTENDED USE:
The versatility of the OLWX1 LED combines a sleek, low profile wall pack design with energy efficient, low maintenance LEDs for replacing up to 400W metal halide fixtures. Mounting accessories are available to convert the OLWX1 LED into an energy efficient flood light. The versatile design of the OLWX2 LED combines a sleek, low profile wall pack and high output LEDs to provide an energy efficient, low maintenance LED wall pack suitable for replacing up to 400W metal halide luminaires. Available Floodlight mounting accessories convert the OLWX2 LED into a highly efficient floodlight.

CONSTRUCTION:
Cast aluminum housing with textured dark bronze powder paint for durability. Integral heat sink optimizes thermal management through conduction and convection cooling. LEDs are protected behind a glass lens. Housing is sealed against moisture and environmental contaminants (IP65 rated). See Lighting Facts label and photometry reports for details.

ELECTRICAL:
Light engine consists of high efficiency Chip On Board (COB) LED with integrated circuit board mounted directly to the housing to maximize heat dissipation and provide long life (L70 for 50,000 hours, >25°C). Electronic driver has a power factor >90% and THD <20% and a minimum 2.5kV surge rating. Flood light mounting accessories include an additional 40k surge protection device. LEDs are available in 4000K and 5000K CCTs.

INSTALLATION:
Early mounts to recessed junction boxes with the included wall mount bracket, or for surface mounting and conduit entry - with the included junction box with flow 1/2" threaded conduit entry hole. Flood light mounting accessories (sold separately) include bracket, integral slipfilter and pole mounting options. Each flood mount accessory comes with a top view and warning guard. Luminaires may be wall or ground mounted in downward or upward orientation.

LIMITINGS:
UL Listed for US and Canadian safety standards for wet locations. Rated for 40° Centimeter ambient. Tested in accordance with ENEC LM-79 and LM-80 standards. Designlight Consortium (DLC) qualified product. Not all versions of this product may be DLC qualified. Please check the DLC Qualified Products List at www.designlight.org to confirm which versions are qualified.

WARRANTY:
5-year limited warranty. Complete warranty terms located at www.lithonialed.com/customerresources/terms_and_conditions.aspx

Note: Actual performance may differ as a result of end user environment and application. Accessories are design or special order. Mounting under laboratory conditions at 25°C. Specifications subject to change without notice.

Dimensions

OLWX1
Width: 7.12(18mm)
Height: 8(20.3cm)
Depth: 3.17(8cm)
Weight: 5lb(2.27kg)

OLWX2
Width: 14.12(35.8cm)
Height: 12.34(31.3cm)
Depth: 5.12(13.0cm)
Weight: 15.4lb(6.9kg)

All dimensions are inches (millimeters) unless otherwise indicated.

SITE DEVELOPMENT PLAN
MONUMENT STEEL STRUCTURES
 ELECTRICAL PHOTOMETRIC PLAN
 18910 BASE CAMP ROAD
 MONUMENT, COLORADO

REV. NO.	DESCRIPTION	DATE
1		06/11/2019

PROJ NO: SSA
 ENG:
 CHKD:
 DATE: 04/15/2019

SHEET NUMBER
E-1
 9 OF 9



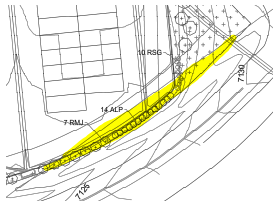
PDD FILE NO. PPR1919

1
 E-1
ELECTRICAL PHOTOMETRIC PLAN
 1" = 30'-0"

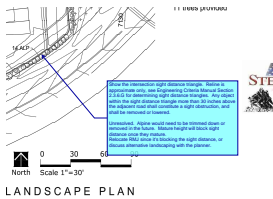
P:\Steel Structures - Monument_CO18 - Drawings\Research\11-Steel Development Plans (SPN)\Lighting Plan.dwg, 6/23/2019 4:10:57 PM, epperson, 1:1

Site Development Plan_v2-redline.pdf Markup Summary

dsdlaforce (2)



Subject: Highlight
Page Label: [4] 4 SITE LANDSCAPE PLAN
Lock: Unlocked
Author: dsdlaforce
Date: 7/3/2019 9:23:56 AM
Status:
Color:
Layer:
Space:



Subject: Callout
Page Label: [4] 4 SITE LANDSCAPE PLAN
Lock: Unlocked
Author: dsdlaforce
Date: 7/3/2019 9:24:40 AM
Status:
Color:
Layer:
Space:

Show the intersection sight distance triangle. Reline is approximate only, see Engineering Criteria Manual Section 2.3.6.G for determining sight distance triangles. Any object within the sight distance triangle more than 30 inches above the adjacent road shall constitute a sight obstruction, and shall be removed or lowered.

Unresolved. Alpine would need to be trimmed down or removed in the future. Mature height will block sight distance once they mature. Relocate RMJ since it's blocking the sight distance, or discuss alternative landscaping with the planner.