

1. STORMWATER DISCHARGES FROM CONSTRUCTION SITES SHALL NOT CAUSE OR THREATEN TO CAUSE POLLUTION, CONTAMINATION, OR DEGRADATION OF STATE WATERS. ALL WORK AND EARTH DISTURBANCE SHALL BE DONE IN A MANNER THAT MINIMIZES POLLUTION OF ANY ON-SITE OR OFF- SITE WATERS, INCLUDING WETLANDS.
2. NOTWITHSTANDING ANYTHING DEPICTED IN THESE PLANS IN WORDS OR GRAPHIC REPRESENTATION, ALL DESIGN AND CONSTRUCTION RELATED TO ROADS, STORM DRAINAGE AND EROSION CONTROL SHALL CONFORM TO THE STANDARDS AND REQUIREMENTS OF THE MOST RECENT VERSION OF THE RELEVANT ADOPTED EL PASO COUNTY STANDARDS, INCLUDING THE LAND DEVELOPMENT CODE, THE ENGINEERING CRITERIA MANUAL, THE DRAINAGE CRITERIA MANUAL, AND THE DRAINAGE CRITERIA MANUAL VOLUME 2. ANY DEVIATIONS TO REGULATIONS AND STANDARDS MUST BE REQUESTED, AND APPROVED, IN WRITING.
3. A SEPARATE STORMWATER MANAGEMENT PLAN (SWMP) FOR THIS PROJECT SHALL BE COMPLETED AND AN EROSION AND STORMWATER QUALITY CONTROL PERMIT (ESQCP) ISSUED PRIOR TO COMMENCING CONSTRUCTION. DURING CONSTRUCTION THE SWMP IS THE RESPONSIBILITY OF THE DESIGNATED QUALIFIED STORMWATER MANAGER OR CERTIFIED EROSION CONTROL INSPECTOR AND SHALL BE LOCATED ON SITE AT ALL TIMES DURING CONSTRUCTION AND SHALL BE KEPT UP TO DATE WITH WORK PROGRESS AND CHANGES IN THE FIELD.
4. ONCE THE ESQCP IS APPROVED AND A "NOTICE TO PROCEED" HAS BEEN ISSUED, THE CONTRACTOR MAY INSTALL THE INITIAL STAGE EROSION AND SEDIMENT CONTROL MEASURES AS INDICATED ON THE APPROVED GCD. A PRECONSTRUCTION MEETING BETWEEN THE CONTRACTOR, ENGINEER, AND EL PASO COUNTY WILL BE HELD PRIOR TO ANY CONSTRUCTION. IT IS THE RESPONSIBILITY OF THE APPLICANT TO COORDINATE THE MEETING TIME AND PLACE WITH COUNTY STAFF.
5. CONTROL MEASURES MUST BE INSTALLED PRIOR TO COMMENCEMENT OF ACTIVITIES THAT MAY CONTRIBUTE POLLUTANTS TO STORMWATER. TEMPORARY SEDIMENT AND EROSION CONTROL MEASURES FOR ALL SLOPES, CHANNELS, DITCHES, OR ANY DISTURBED LAND AREA SHALL BE COMPLETED IMMEDIATELY UPON COMPLETION OF THE DISTURBANCE.
6. ALL TEMPORARY SEDIMENT AND EROSION CONTROL MEASURES SHALL BE MAINTAINED AND REMAIN IN EFFECTIVE OPERATING CONDITION UNTIL PERMANENT SOIL EROSION CONTROL MEASURES ARE IMPLEMENTED AND FINAL STABILIZATION IS ESTABLISHED. ALL PERSONS ENGAGED IN LAND DISTURBANCE ACTIVITIES SHALL ASSESS THE ADEQUACY OF CONTROL MEASURES AT THE SITE AND IDENTIFY IF CHANGES TO THOSE CONTROL MEASURES IS NEEDED TO ENSURE THE CONTINUED EFFECTIVE PERFORMANCE OF THE CONTROL MEASURES. ALL CHANGES TO TEMPORARY SEDIMENT AND EROSION CONTROL MEASURES MUST BE INCORPORATED INTO THE STORMWATER MANAGEMENT PLAN PRIOR TO IMPLEMENTATION.
7. TEMPORARY STABILIZATION SHALL BE IMPLEMENTED ON DISTURBED AREAS AND STOCKPILES WHERE GROUND DISTURBING CONSTRUCTION ACTIVITY HAS PERMANENTLY CEASED OR TEMPORARILY CEASED FOR LONGER THAN 14 DAYS. AN AREA THAT IS GOING TO REMAIN IN AN INTERIM STATE FOR MORE THAN 60 DAYS SHALL ALSO BE STABILIZED.
8. FINAL STABILIZATION MUST BE IMPLEMENTED AT ALL APPLICABLE CONSTRUCTION SITES. FINAL STABILIZATION IS ACHIEVED WHEN ALL GROUND DISTURBING ACTIVITIES ARE COMPLETE AND ALL DISTURBED AREAS EITHER HAVE A UNIFORM VEGETATIVE COVER WITH INDIVIDUAL PLAN DENSITY OF 70 PERCENT OF PRE-DISTURBANCE LEVELS ESTABLISHED OR EQUIVALENT PERMANENT ALTERNATIVE STABILIZATION METHOD IS IMPLEMENTED. ALL TEMPORARY SEDIMENT AND EROSION CONTROL MEASURES SHALL BE REMOVED UPON FINAL STABILIZATION AND BEFORE PERMIT CLOSURE.
9. ALL PERMANENT STORMWATER MANAGEMENT FACILITIES SHALL BE INSTALLED AS DEFINED IN THE APPROVED PLANS. ANY PROPOSED CHANGES THAT EFFECT THE HYDROLOGY OR HYDRAULICS OF A PERMANENT STORMWATER MANAGEMENT STRUCTURES MUST BE APPROVED BY THE ECM ADMINISTRATOR PRIOR TO IMPLEMENTATION.
10. ANY EARTH DISTURBANCE SHALL BE CONDUCTED IN SUCH A MANNER SO AS TO EFFECTIVELY MINIMIZE ACCELERATED SOIL EROSION AND RESULTING SEDIMENTATION. ALL DISTURBANCES SHALL BE DESIGNED, CONSTRUCTED, AND COMPLETED SO THAT THE EXPOSED AREA OF ANY DISTURBED LAND SHALL BE LIMITED TO THE SHORTEST PRACTICAL PERIOD OF TIME. PRE-EXISTING VEGETATION SHALL BE PROTECTED AND MAINTAINED WITHIN 50 HORIZONTAL FEET OF A WATERS OF THE STATE, UNLESS INFEASIBLE.
11. COMPACTION OF SOIL MUST BE PREVENTED IN AREAS DESIGNATED FOR INFILTRATION CONTROL MEASURES OR WHERE FINAL STABILIZATION WILL BE ACHIEVED BY VEGETATIVE COVER. AREAS DESIGNATED FOR INFILTRATION CONTROL SHALL ALSO BE PROTECTED FROM SEDIMENTATION DURING CONSTRUCTION UNTIL FINAL STABILIZATION IS ACHIEVED.
12. ANY TEMPORARY OR PERMANENT FACILITY DESIGNED AND CONSTRUCTED FOR THE CONVEYANCE OF STORMWATER AROUND, THROUGH, OR FROM THE EARTH DISTURBANCE AREA SHALL BE A STABILIZED CONVEYANCE DESIGNED TO MINIMIZE EROSION AND THE DISCHARGE OF SEDIMENT OFF SITE.
13. CONCRETE WASH WATER SHALL BE CONTAINED AND DISPOSED OF IN ACCORDANCE WITH THE SWMP. NO WASH WATER SHALL BE DISCHARGED TO OR ALLOWED TO RUNOFF TO STATE WATERS, INCLUDING ANY SURFACE OR SUBSURFACE STORM DRAINAGE SYSTEM OR FACILITIES. CONCRETE WASHOUT SHALL NOT BE LOCATED IN AN AREA WHERE SHALLOW GROUNDWATER MAY BE PRESENT, OR WITHIN 50 FEET OF A SURFACE WATER BODY.
14. DEWATERING OPERATIONS: UNCONTAMINATED GROUND WATER MAY BE DISCHARGED ON SITE, BUT MAY NOT LEAVE THE SITE IN THE FORM OF SURFACE RUNOFF.
15. EROSION CONTROL BLANKETING IS TO BE USED ON SLOPES STEEPER THAN 3:1.
16. BUILDING, CONSTRUCTION, EXCAVATION, OR OTHER WASTE MATERIALS SHALL NOT BE TEMPORARILY PLACED OR STORED IN THE STREET, ALLEY, OR OTHER PUBLIC WAY, UNLESS IN ACCORDANCE WITH AN APPROVED TRAFFIC CONTROL PLAN. BMP'S MAY BE REQUIRED BY EL PASO COUNTY ENGINEERING IF DEEMED NECESSARY, BASED ON SPECIFIC CONDITIONS AND CIRCUMSTANCES.
17. VEHICLE TRACKING OF SOILS AND CONSTRUCTION DEBRIS OFF-SITE SHALL BE MINIMIZED. MATERIALS TRACKED OFFSITE SHALL BE CLEANED UP AND PROPERLY DISPOSED OF IMMEDIATELY.
18. CONTRACTOR SHALL BE RESPONSIBLE FOR THE REMOVAL OF ALL WASTES FROM THE CONSTRUCTION SITE FOR DISPOSAL IN ACCORDANCE WITH LOCAL AND STATE REGULATORY REQUIREMENTS. NO CONSTRUCTION DEBRIS, TREE SLASH, BUILDING MATERIAL WASTES OR UNUSED BUILDING MATERIALS SHALL BE BURIED, DUMPED, OR DISCHARGED AT THE SITE.
19. THE OWNER, SITE DEVELOPER, CONTRACTOR, AND/OR THEIR AUTHORIZED AGENTS SHALL BE RESPONSIBLE FOR THE REMOVAL OF ALL CONSTRUCTION DEBRIS, DIRT, TRASH, ROCK, SEDIMENT, AND SAND THAT MAY ACCUMULATE IN THE STORM SEWER OR OTHER DRAINAGE CONVEYANCE SYSTEM AND STORMWATER APPURTENANCES AS A RESULT OF SITE DEVELOPMENT.
20. THE QUANTITY OF MATERIALS STORED ON THE PROJECT SITE SHALL BE LIMITED, AS MUCH AS PRACTICAL, TO THAT QUANTITY REQUIRED TO PERFORM THE WORK IN AN ORDERLY SEQUENCE. ALL MATERIALS STORED ON-SITE SHALL BE STORED IN A NEAT, ORDERLY MANNER, IN THEIR ORIGINAL CONTAINERS, WITH ORIGINAL MANUFACTURER'S LABELS.
21. NO CHEMICALS ARE TO BE USED BY THE CONTRACTOR, WHICH HAVE THE POTENTIAL TO BE RELEASED IN STORMWATER UNLESS PERMISSION FOR THE USE OF A SPECIFIC CHEMICAL IS GRANTED IN WRITING BY THE ECM ADMINISTRATOR. IN GRANTING THE USE OF SUCH CHEMICALS, SPECIAL CONDITIONS AND MONITORING MAY BE REQUIRED.
22. BULK STORAGE OF PETROLEUM PRODUCTS OR OTHER LIQUID CHEMICALS IN EXCESS OF 55 GALLONS SHALL HAVE ADEQUATE SECONDARY CONTAINMENT PROTECTION TO CONTAIN ALL SPILLS AND PREVENT ANY SPILLED MATERIAL FROM ENTERING STATE WATERS, INCLUDING ANY SURFACE OR SUBSURFACE STORM DRAINAGE SYSTEM OR FACILITIES.
23. NO PERSON SHALL CAUSE THE IMPEDIMENT OF STORMWATER FLOW IN THE FLOW LINE OF THE CURB AND GUTTER OR IN THE DITCH FLOW LINE.

24. INDIVIDUALS SHALL COMPLY WITH THE "COLORADO WATER QUALITY CONTROL ACT" (TITLE 25, ARTICLE 8, CRS), AND THE "CLEAN WATER ACT" (33 USC 1344), IN ADDITION TO THE REQUIREMENTS INCLUDED IN THE DCM VOLUME II AND THE ECM APPENDIX I. ALL APPROPRIATE PERMITS MUST BE OBTAINED BY THE CONTRACTOR PRIOR TO CONSTRUCTION (NPDES, FLOODPLAIN, 404, FUGITIVE DUST, ETC.). IN THE EVENT OF CONFLICTS BETWEEN THESE REQUIREMENTS AND LAWS, RULES, OR REGULATIONS OF OTHER FEDERAL, STATE, OR COUNTY AGENCIES, THE MORE RESTRICTIVE LAWS, RULES, OR REGULATIONS SHALL APPLY.
25. ALL CONSTRUCTION TRAFFIC MUST ENTER/EXIT THE SITE AT APPROVED CONSTRUCTION ACCESS POINTS.
26. PRIOR TO ACTUAL CONSTRUCTION THE PERMITEE SHALL VERIFY THE LOCATION OF EXISTING UTILITIES.
27. A WATER SOURCE SHALL BE AVAILABLE ON SITE DURING EARTHWORK OPERATIONS AND UTILIZED AS REQUIRED TO MINIMIZE DUST FROM EARTHWORK EQUIPMENT AND WIND.
28. THE SOILS REPORT FOR THIS SITE HAS BEEN PREPARED BY _____ AND SHALL BE CONSIDERED A PART OF THESE PLANS.
29. AT LEAST TEN (10) DAYS PRIOR TO THE ANTICIPATED START OF CONSTRUCTION, FOR PROJECTS THAT WILL DISTURB 1 ACRE OR MORE, THE OWNER OR OPERATOR OF CONSTRUCTION ACTIVITY SHALL SUBMIT A PERMIT APPLICATION FOR STORMWATER DISCHARGE TO THE COLORADO DEPARTMENT OF PUBLIC HEALTH AND ENVIRONMENT, WATER QUALITY DIVISION. THE APPLICATION CONTAINS CERTIFICATION OF COMPLETION OF A STORMWATER MANAGEMENT PLAN (SWMP), OF WHICH THIS GRADING AND EROSION CONTROL PLAN MAY BE A PART. FOR INFORMATION OR APPLICATION MATERIALS CONTACT:

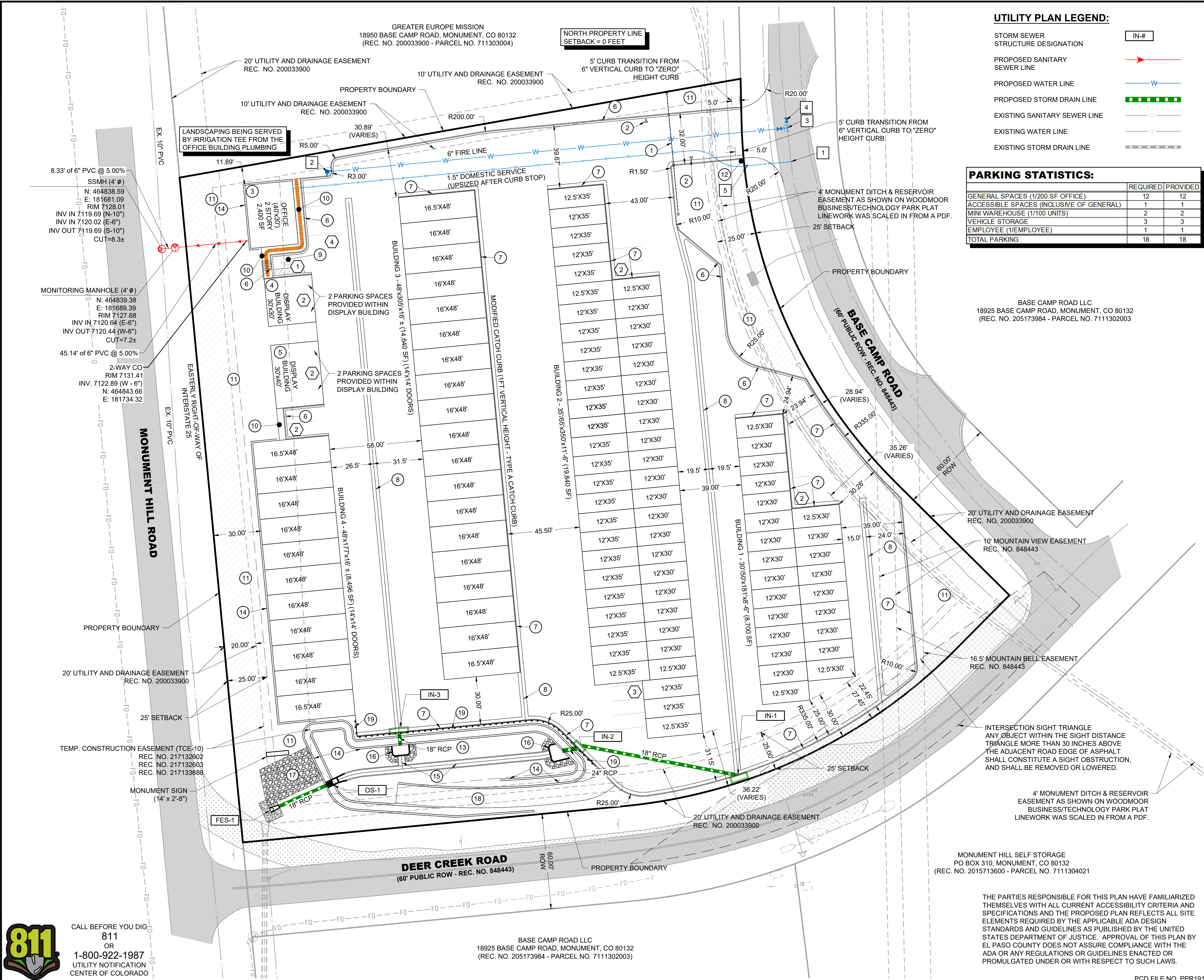
COLORADO DEPARTMENT OF PUBLIC HEALTH AND ENVIRONMENT
WATER QUALITY CONTROL DIVISION
WQCD - PERMITS
4300 CHERRY CREEK DRIVE SOUTH
DENVER, CO 80246-1530
ATTN: PERMITS UNIT

1. LOCATION (HORIZONTAL AND VERTICAL) OF ALL EXISTING UTILITIES (PRIVATE OR PUBLIC) SHALL BE IDENTIFIED OR VERIFIED BY CONTRACTOR PRIOR TO MOBILIZATION, CONSTRUCTION, OR ORDERING OF MATERIALS. FOR INFORMATION CONTACT: DENVER INTER-UTILITY GROUP, 1-800-922-1987 OR LOCAL AGENCY, PRIVATE ENTITY, OR OTHER ASSOCIATED ENTITIES WITHIN THE LIMITS OF CONSTRUCTION. THE CONTRACTOR SHALL BEAR THE FULL COST OF REMOVAL, REPLACEMENT, AND DELAY RELATED TO UNVERIFIED EXISTING CONDITIONS. WHERE THE CONTRACTOR FINDS CONFLICTS OR DISCREPANCIES THEY SHALL BE REPORTED IMMEDIATELY TO THE ENGINEER.
2. THE CONTRACTOR SHALL PERFORM ALL WORK NECESSARY TO COMPLETE THE WORK SHOWN ON THE PLANS OR DESCRIBED IN THE SPECIFICATIONS IN A SATISFACTORY MANNER. UNLESS OTHERWISE PROVIDED, THE CONTRACTOR SHALL FURNISH ALL MATERIALS, EQUIPMENT, TOOLS, LABOR, AND INCIDENTALS TO COMPLETE THE WORK.
3. IN SOME CASES THERE ARE AREAS OF THE SITE DEPICTED ON MORE THAN ONE PAGE OF THE PLANS, HOWEVER, ALL IMPROVEMENTS ARE NOT DEPICTED DEPICTED ON EVERY PAGE. THE CONTRACTOR SHALL REVIEW EACH PAGE OF THE PLANS AND DETAILS AND SHALL CONSTRUCT ALL IMPROVEMENTS REGARDLESS OF WHETHER THEY ARE SHOWN ON EVERY PAGE. WHERE DISCREPANCIES ARE FOUND ON PLANS OR DETAILS SHOWN ON THE PLANS, THE CONTRACTOR SHALL NOTIFY THE ENGINEER PRIOR TO BEGINNING CONSTRUCTIONS. THE CONTRACTOR SHALL BEAR THE FULL COST OF REMOVAL, REPLACEMENT, DELAY, AND MOBILIZATION RELATED TO FAILURE TO REVIEW ALL PAGES.
4. THE MANUFACTURER/SUPPLIER SHALL DETERMINE PIPE CLASS BASED ON THE MAXIMUM COVER AND BEDDING SHOWN ON THE PLANS AND SOIL TYPE SHOWN IN THE GEOTECHNICAL REPORT. THE CONTRACTOR SHALL PROVIDE PIPE D-LOAD CALCULATIONS STAMPED BY A REGISTERED ENGINEER. IN NO CASE SHALL RCP PIPE CLASS BE LESS THAN CLASS III.

[illegible]



CALL BEFORE YOU DIG
811
OR
1-800-922-1987
UTILITY NOTIFICATION
CENTER OF COLORADO

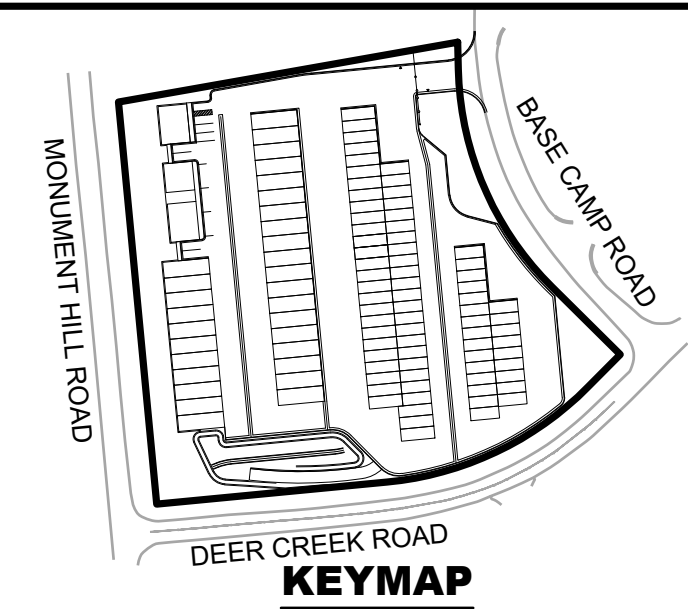


UTILITY PLAN LEGEND:

STORM SEWER STRUCTURE DESIGNATION	IN-#
PROPOSED SANITARY SEWER LINE	→
PROPOSED WATER LINE	W
PROPOSED STORM DRAIN LINE	→
EXISTING SANITARY SEWER LINE	→
EXISTING WATER LINE	W
EXISTING STORM DRAIN LINE	→

PARKING STATISTICS:

	REQUIRED	PROVIDED
GENERAL SPACES (1/200 SF OFFICE)	12	12
ACCESSIBLE SPACES (INCLUSIVE OF GENERAL)	1	1
MINI WAREHOUSE (1/100 UNITS)	2	2
VEHICLE STORAGE	3	3
EMPLOYEE (1/EMPLOYEE)	1	1
TOTAL PARKING	18	18



KEYNOTES:

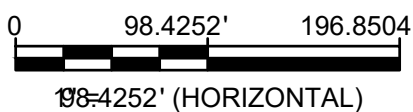
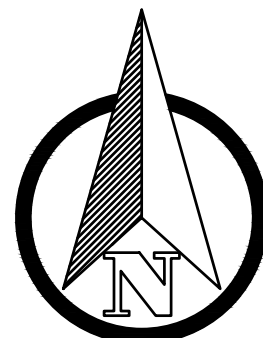
- ENTRY GATE
- ENTRY GATE KEY PAD
- 2 STORY OFFICE
- DISPLAY BUILDING (30'X30') W/ 2 PARKING SPACES
- DISPLAY BUILDING (30'X40') W/ 2 PARKING SPACES
- 6" CURB AND GUTTER (SPILL)
- 6" CURB AND GUTTER (CATCH)
- 4' CROSSSPAN
- 9'X19' ADA PARKING STALL
- 5' SIDEWALK
- LANDSCAPE AREA
- STOP SIGN
- DETENTION POND
- RETAINING WALLS
- 4' TRICKLE CHANNEL
- POND FOREBAY
- TYPE M - BURIED RIP RAP
- POND MAINTENANCE ACCESS
- CDOT - TYPE 3 W-BEAM GUARDRAIL
- # PARKING COUNT
- 1" SADDLE TAP & CORP. STOP
- PROPOSED FIRE HYDRANT
- 8"X6" TEE (FIRE HYDRANT ASSEMBLY)
- 8" GATE VALVE
- CURB STOP
12"X12"X2" PRECAST CONC BLOCK & VALVE CAN

SITE PLAN NOTES:

- ALL RADIAL DIMENSIONS ARE TO FLOWLINE UNLESS OTHERWISE NOTED
- ALL HORIZONTAL DIMENSIONS ARE TO FLOWLINE AND BUILDING EDGE UNLESS OTHERWISE NOTED

UTILITY PLAN NOTES:

- ALL 8" WATER TO BE PVC UNLESS OTHERWISE NOTED.
- ALL STORM SEWER IS PRIVATE UNLESS OTHERWISE NOTED.
- ALL FIRE HYDRANT LATERALS SHALL BE DIP.



TERRA FORMA SOLUTIONS

DATE	06/11/2019	
REV. NO.	DESCRIPTION	REVISIONS PER 1ST SUBMITTAL COMMENTS
1		
2		
3		
4		
5		
6		
7		
8		
9		
10		
11		
12		
13		
14		
15		
16		
17		
18		
19		

MONUMENT STEEL STRUCTURES

SITE AND UTILITY PLAN

18910 BASE CAMP ROAD
MONUMENT, COLORADO

PROJ NO: SSA

ENG: _____

CHKD: _____

DATE: 04/10/2019

SHEET NUMBER

SU

3 OF 12

GREATER EUROPE MISSION
18950 BASE CAMP ROAD, MONUMENT, CO 80132
(REC. NO. 200033900 - PARCEL NO. 711303004)

PROPERTY BOUNDARY

MONUMENT HILL ROAD

BASE CAMP ROAD

DEER CREEK ROAD

PROPERTY BOUNDARY

BASE CAMP ROAD LLC
18925 BASE CAMP ROAD, MONUMENT, CO 80132
(REC. NO. 205173984 - PARCEL NO. 7111302003)

BASE CAMP ROAD LLC
18925 BASE CAMP ROAD, MONUMENT, CO 80132
(REC. NO. 205173984 - PARCEL NO. 7111302003)

MONUMENT HILL SELF STORAGE
PO BOX 310, MONUMENT, CO 80132
(REC. NO. 2015713600 - PARCEL NO. 7111304021)

SECTION - 1

SECTION - 2

SECTION - 3

SECTION - 4

811





CALL 811

1-800-UTILITY-CENTER

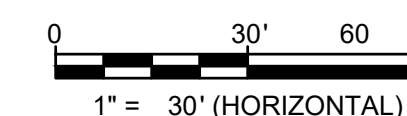
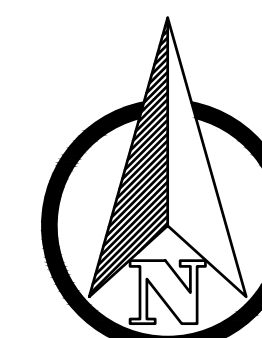


1. RETAINING WALLS
2. DETENTION POND
3. DETENTION POND MAINTENANCE ACCESS
4. OUTLET STRUCTURE
5. 4' DRAINAGE PAN
6. DRAINAGE SWALE
7. STORM INLET

LP	=	LOW POINT
HP	=	HIGH POINT
FL	=	FLOW LINE
TOW	=	TOP OF WALL
BOW	=	FINISHED GRADE AT BOTTOM FACE OF WALL
FF	=	FINISHED FLOOR
FG	=	FINISHED GROUND

-  PROPOSED MAJOR CONTOUR
 PROPOSED MINOR CONTOUR
 EXISTING MAJOR CONTOUR
 EXISTING MINOR CONTOUR

1. CONTRACTOR TO REFER TO THE GEOTECHNICAL REPORT TO ENSURE ALL SUBGRADE PREPARATION REQUIREMENTS, PAVEMENT RECOMMENDATIONS, MINIMUM SLOPE REQUIREMENTS , AND ALL OTHER APPLICABLE REQUIREMENTS ARE MET.
2. THE MAXIMUM SIDEWALK CROSS SLOPE SHALL BE 2.00%.
3. THE MAXIMUM LONGITUDINAL SLOPE OF ANY ADA RAMP SHALL BE 8.33%.
4. RETAINING WALL DESIGN BY OTHERS.



REV. NO.	DESCRIPTION	DATE
<		
<		
<		
<		
<		
<		
<		
A	REVISIONS PER 1ST SUBMITTAL COMMENTS	06/11/2019

CONSTRUCTION DOCUMENTS
MONUMENT STEEL STRUCTURES

GRADING PLAN

18910 BASE CAMP ROAD
MONUMENT, COLORADO

PROJ NO: SSA
ENG :
CHKD:
DATE : 04/10/2019

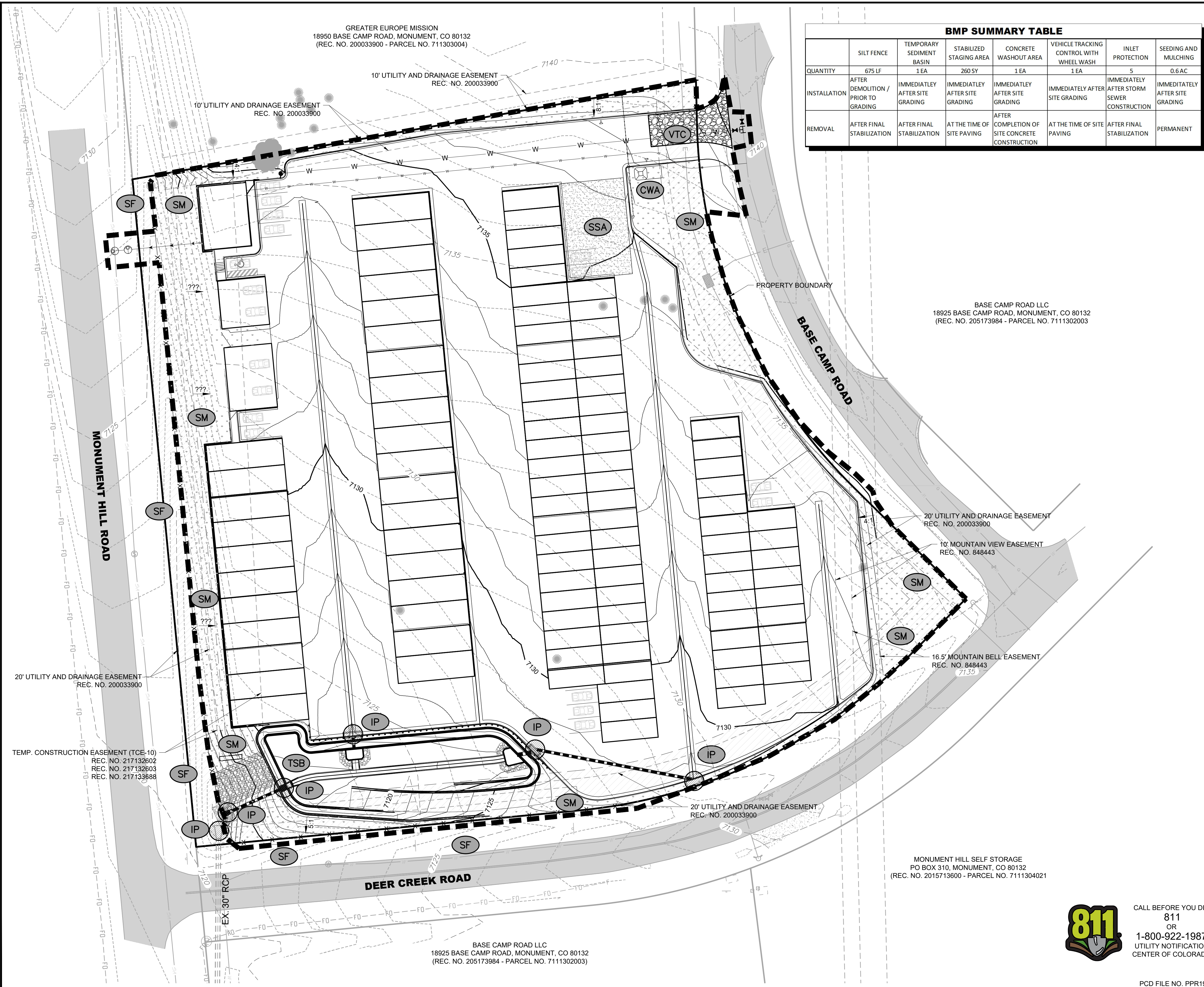
SHEET NUMBER

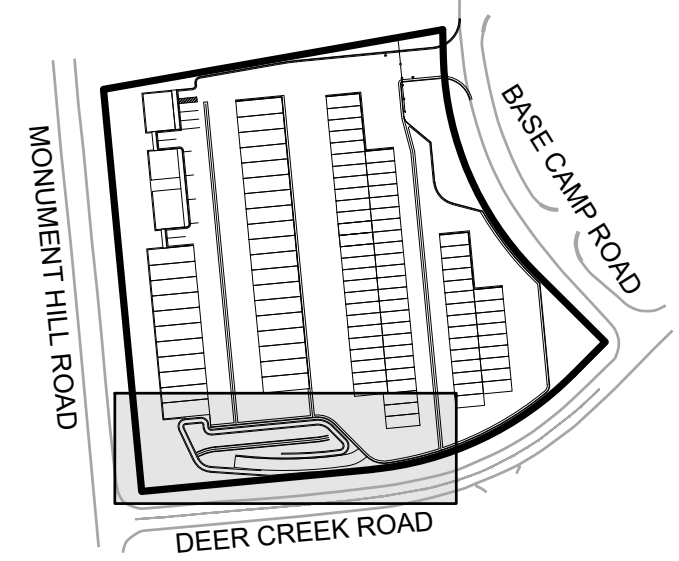
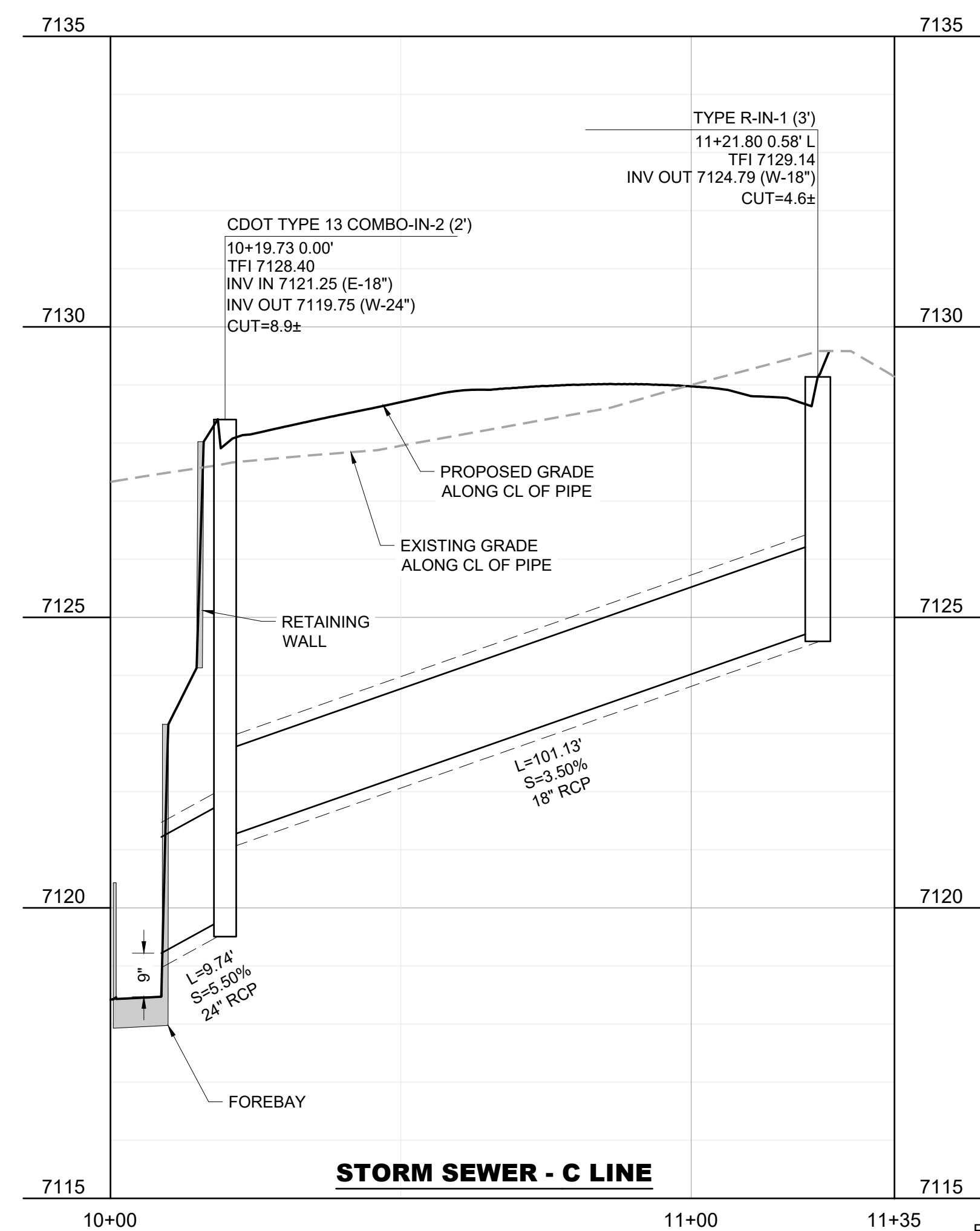
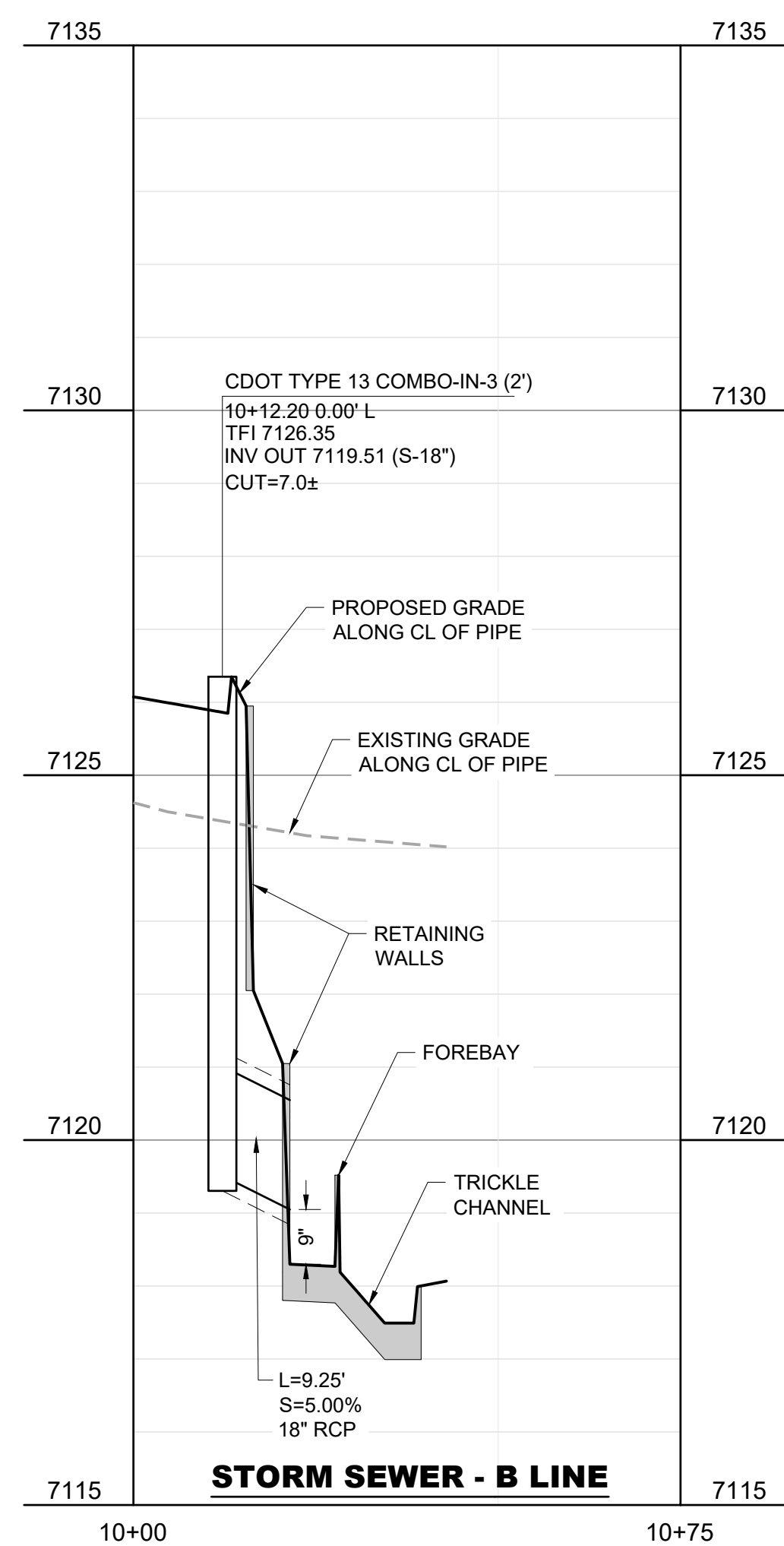
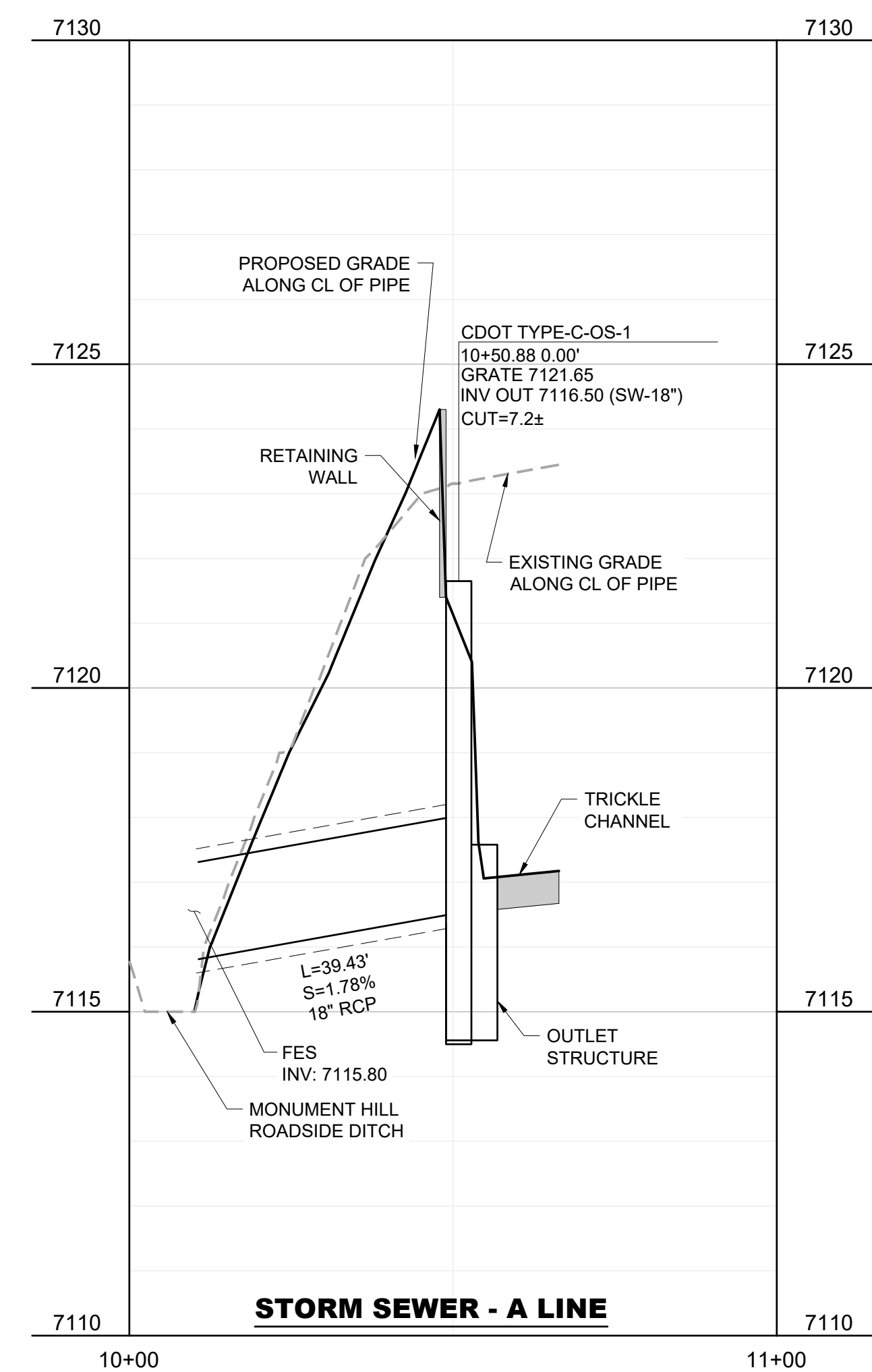
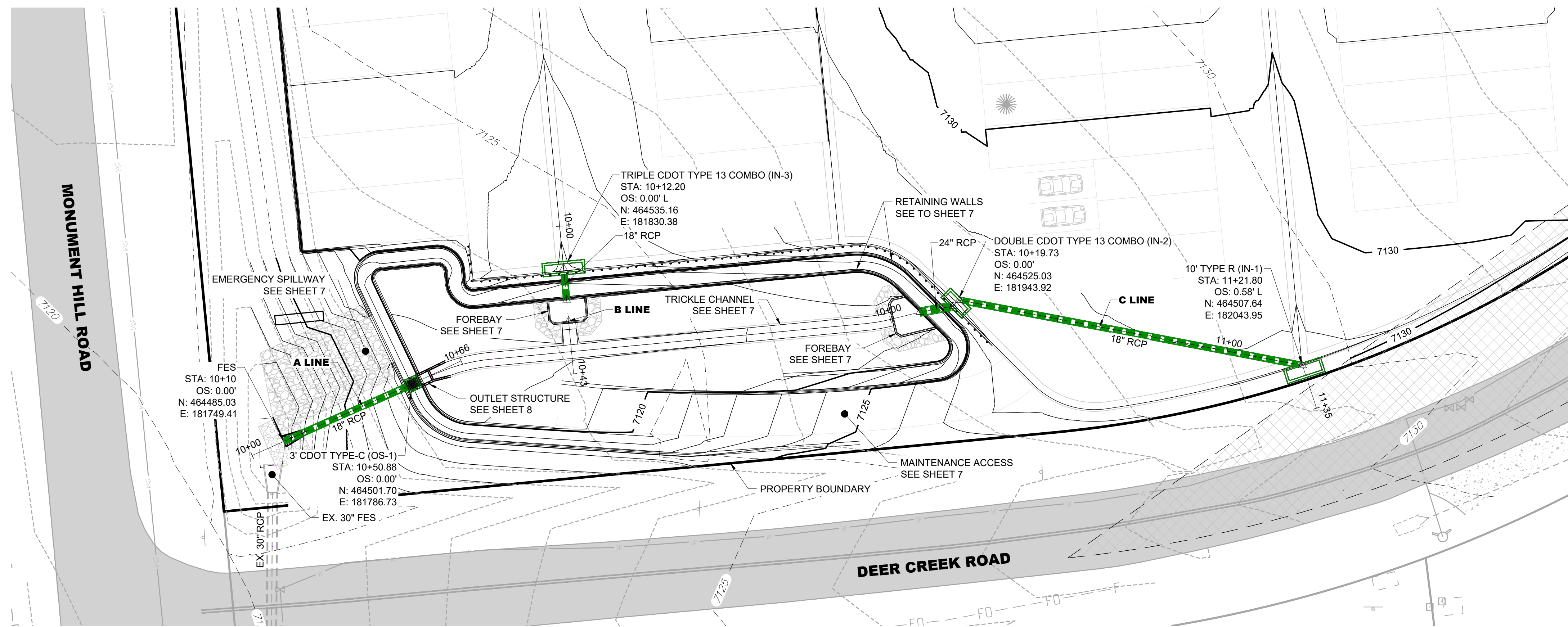
GR

4 OF 12

4 OF 12

\\steel_structures - Monument, CO\03 - Drawings\Plansets\11-Site Development Plans (SDP)\11-Grading Plan.dwg, 6/23/2019 4:16:45 PM, epearson, 1:1





STORM SEWER NOTES:

1. WHERE CONSTRUCTION DETAILS AND SPECIFICATIONS ARE NOTED ON THESE PLANS, USE EL PASO COUNTY STANDARD SPECIFICATIONS FOR DESIGN AND CONSTRUCTION.
2. ALL DIMENSIONS ARE TO FLOWLINE, EXCEPT PROFILES WHICH ARE CENTERLINE DIMENSIONS, OR UNLESS OTHERWISE NOTED.
3. ALL STORM SEWER IS PRIVATE UNLESS OTHERWISE NOTED.
4. ALL INLETS SHALL HAVE A MINIMUM OF 3" FROM OUTSIDE OF PIPE TO INSIDE FACE OF INLET WHICH MAY REQUIRE MODIFIED DIMENSIONS TO THE STANDARD PRECAST BOX. CONTRACTOR TO COORDINATE MODIFIED BOX DIMENSIONS WITH MANUFACTURER.
5. ALL INLET ELEVATIONS ARE TOP OF FACE OF INLET (TFI) ELEVATIONS. SUMP INLET TFI'S ARE BASED OFF OF THE TYPICAL SECTION, UNLESS OTHERWISE SHOWN, AND SHOULD BE CONSTRUCTED AS FLAT, UNLESS OTHERWISE NOTED. ALL ON-GRADE INLETS HAVE THE TFI INDICATED FOR THE CENTER OF THE INLET. INLET SHALL MATCH STREET GRADE.

REV. NO.	DESCRIPTION	DATE
1		
2		
3		
4		
5		
6		
7		
8		
9		
10		
11		
12		
13		
14		
15		
16		
17		
18		
19		
20		
21		
22		
23		
24		
25		
26		
27		
28		
29		
30		
31		
32		
33		
34		
35		
36		
37		
38		
39		
40		
41		
42		
43		
44		
45		
46		
47		
48		
49		
50		
51		
52		
53		
54		
55		
56		
57		
58		
59		
60		
61		
62		
63		
64		
65		
66		
67		
68		
69		
70		
71		
72		
73		
74		
75		
76		
77		
78		
79		
80		
81		
82		
83		
84		
85		
86		
87		
88		
89		
90		
91		
92		
93		
94		
95		
96		
97		
98		
99		
100		
101		
102		
103		
104		
105		
106		
107		
108		
109		
110		
111		
112		
113		
114		
115		
116		
117		
118		
119		
120		
121		
122		
123		
124		
125		
126		
127		
128		
129		
130		
131		
132		
133		
134		
135		
136		
137		
138		
139		
140		
141		
142		
143		
144		
145		
146		
147		
148		
149		
150		
151		
152		
153		
154		
155		
156		
157		
158		
159		
160		
161		
162		
163		
164		
165		
166		
167		
168		
169		
170		
171		
172		
173		
174		
175		
176		
177		
178		
179		
180		
181		
182		
183		
184		
185		
186		
187		
188		
189		
190		
191		
192		
193		
194		
195		
196		
197		
198		

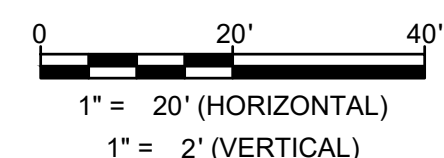
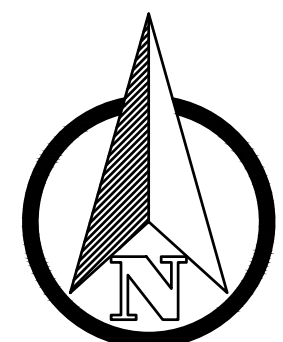
CONSTRUCTION DOCUMENTS
MONUMENT STEEL STRUCTURES

STORM SEWER PLAN AND PROFILE

18910 BASE CAMP ROAD
MONUMENT, COLORADO



CALL BEFORE YOU DIG
811
OR
1-800-922-1987
UTILITY NOTIFICATION
CENTER OF COLORADO

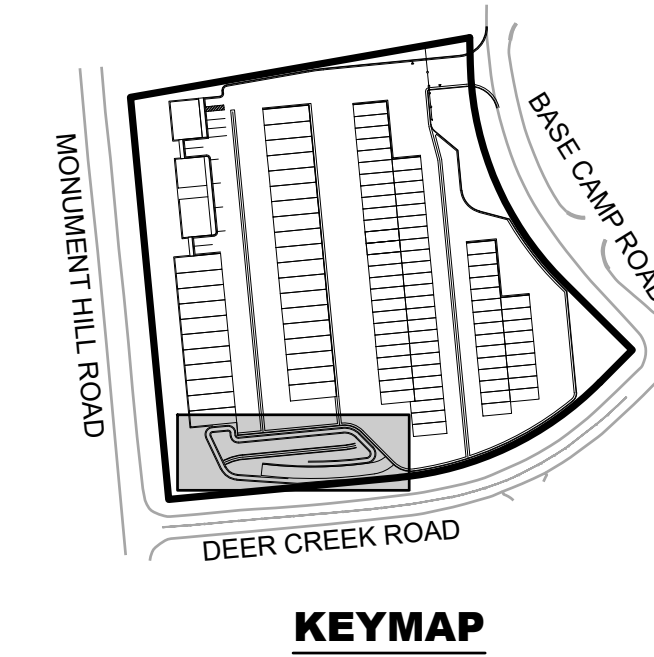
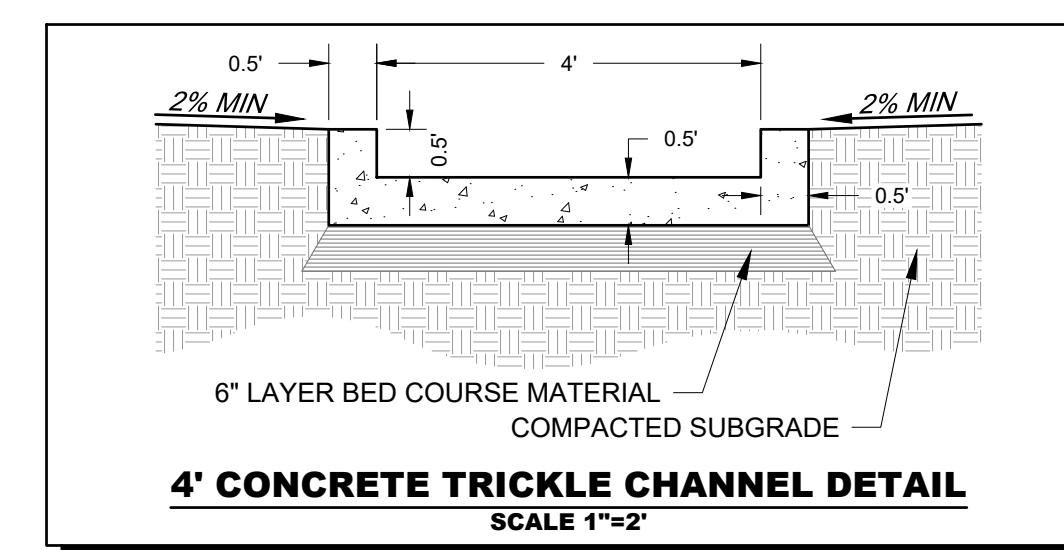
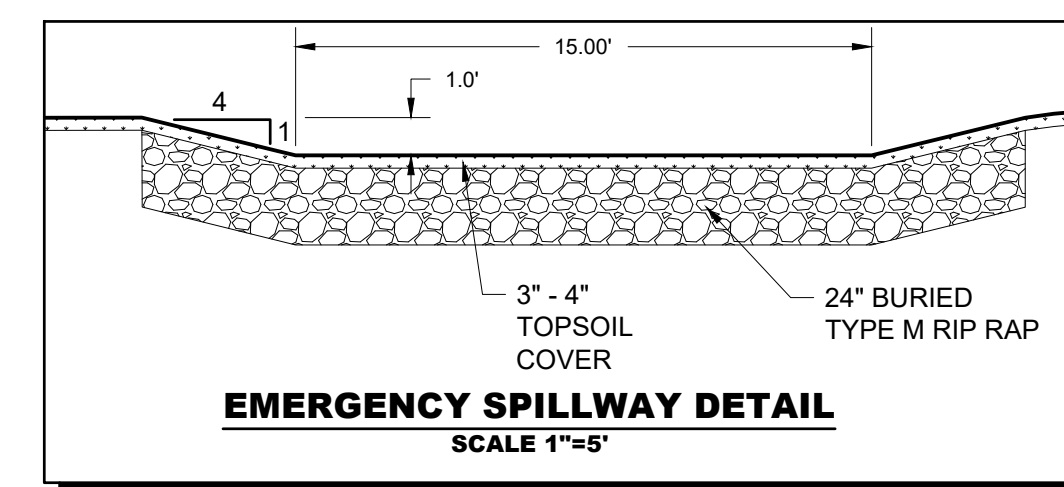
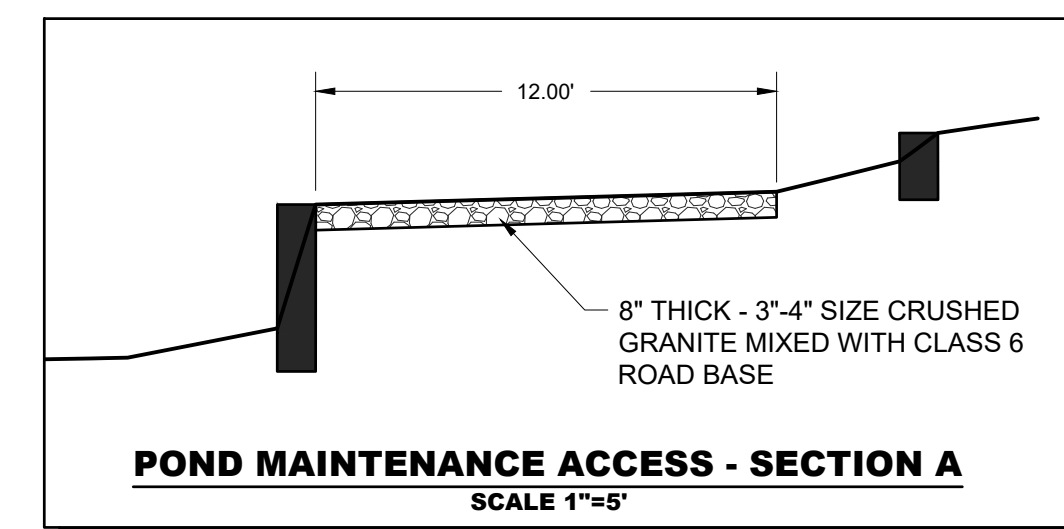
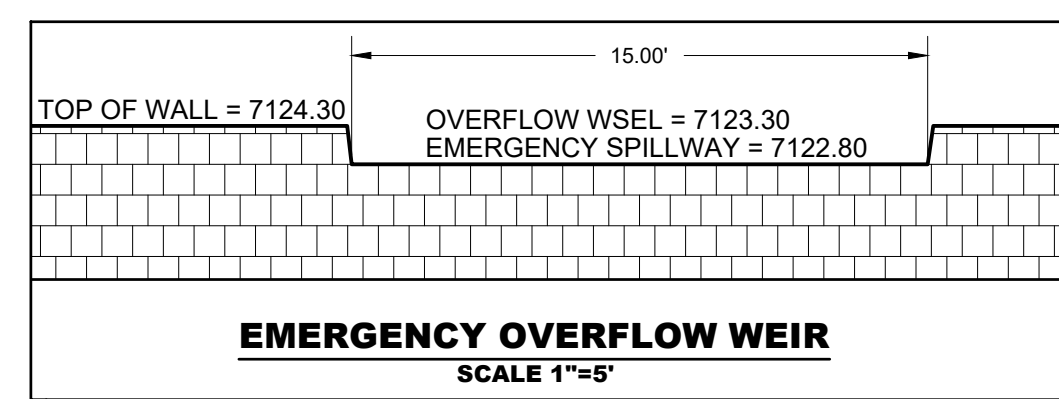
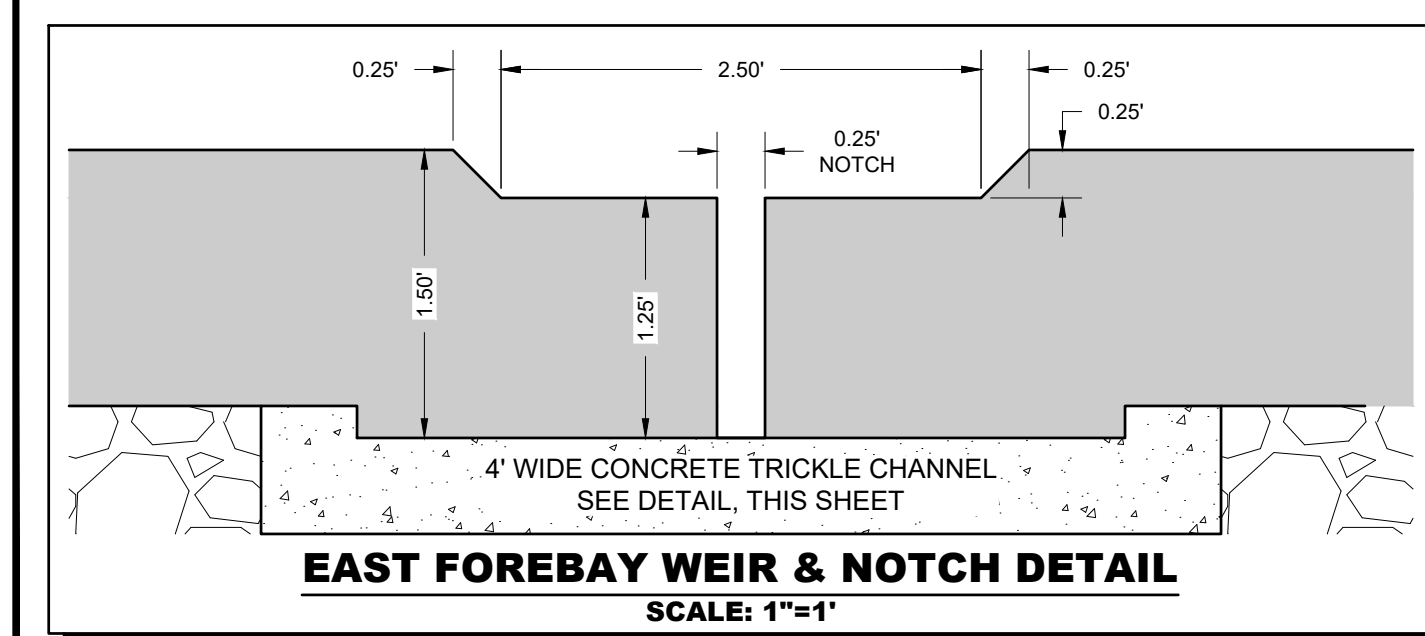
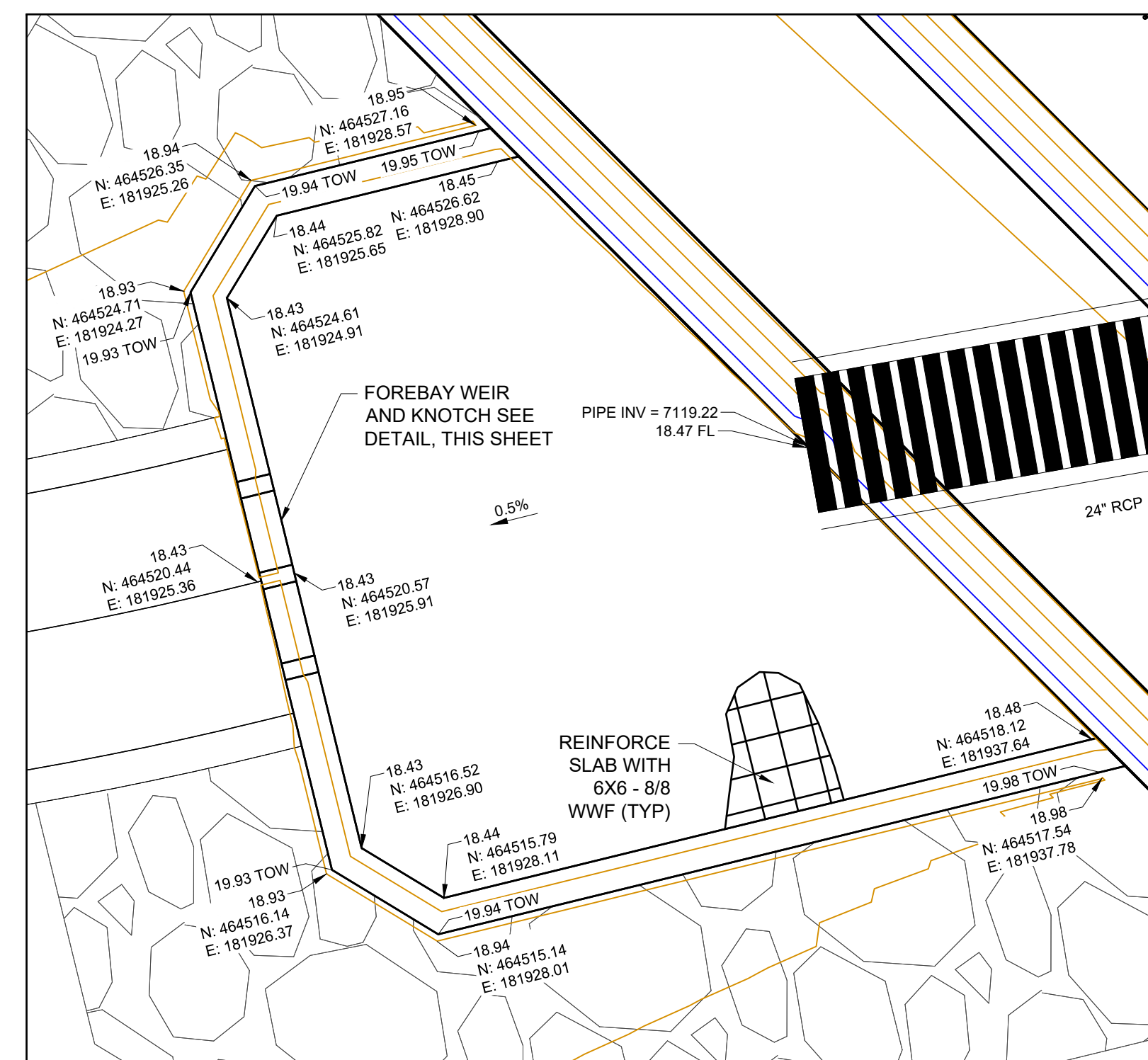
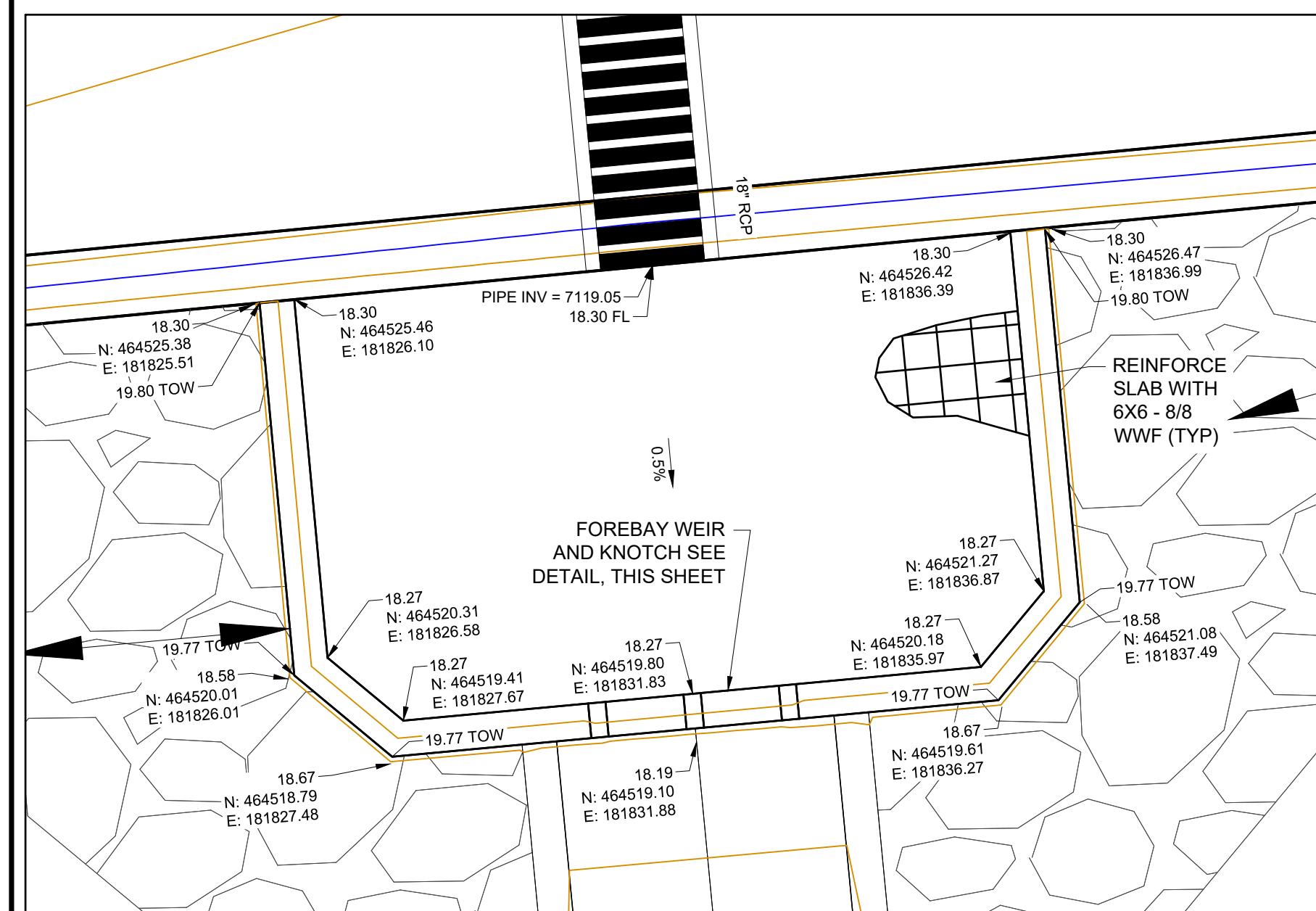
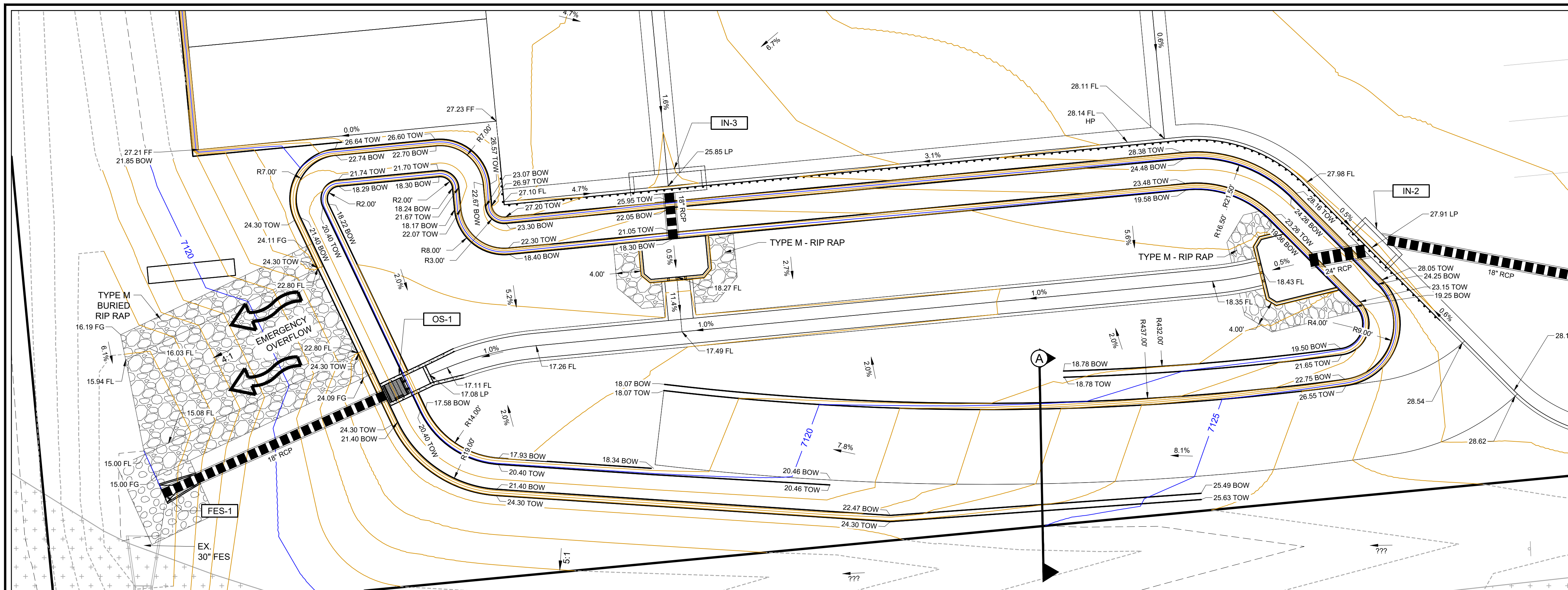


PROJ NO: SSA
ENG :
CHKD:
DATE : 04/10/2019

SHEET NUMBER

SD

6 OF 12



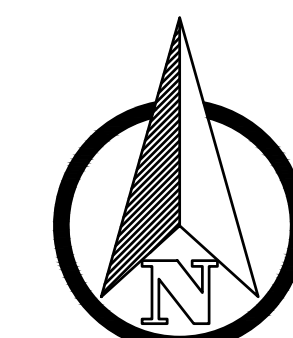
KEYNOTES:

- ① RETAINING WALLS
- ② DETENTION POND
- ③ DETENTION POND MAINTENANCE ACCESS
- ④ OUTLET STRUCTURE
- ⑤ 4' DRAINAGE PAN
- ⑥ DRAINAGE SWALE
- ⑦ STORM INLET

LEGEND:

LP	=	LOW POINT
HP	=	HIGH POINT
FL	=	FLOW LINE
TOW	=	TOP OF WALL
BOW	=	FINISHED GRADE AT BOTTOM FACE OF WALL
FF	=	FINISHED FLOOR
FG	=	FINISHED GROUND

PROPOSED MAJOR CONTOUR
 PROPOSED MINOR CONTOUR
 EXISTING MAJOR CONTOUR
 EXISTING MINOR CONTOUR

[illegible]

CONSTRUCTION DOCUMENTS
MONUMENT STEEL STRUCTURES
 EXTENDED DETENTION BASIN PLAN

18910 BASE CAMP ROAD
 MONUMENT, COLORADO



PROJ NO: SSA

ENG :

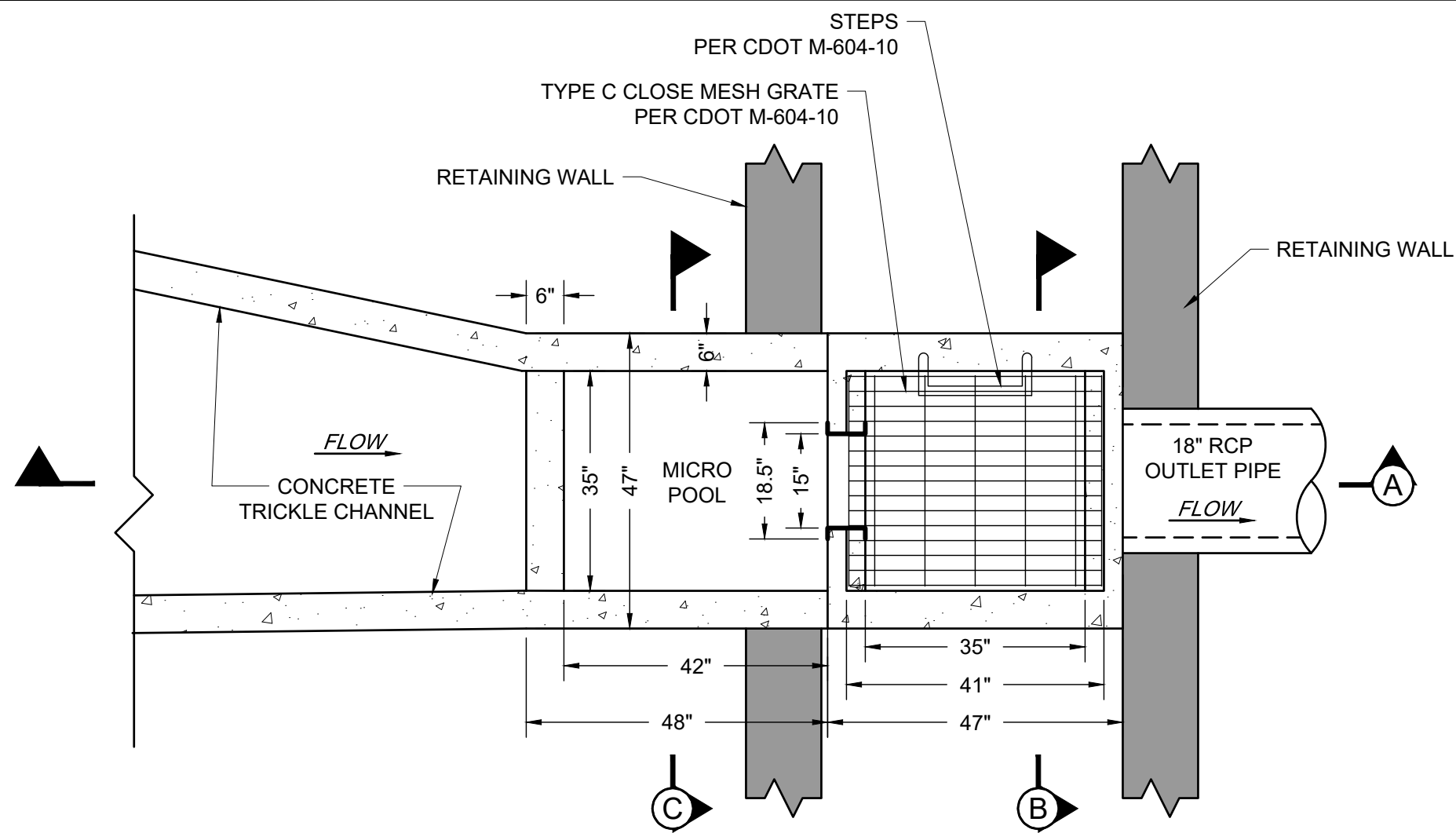
CHKD:

DATE : 04/10/2019

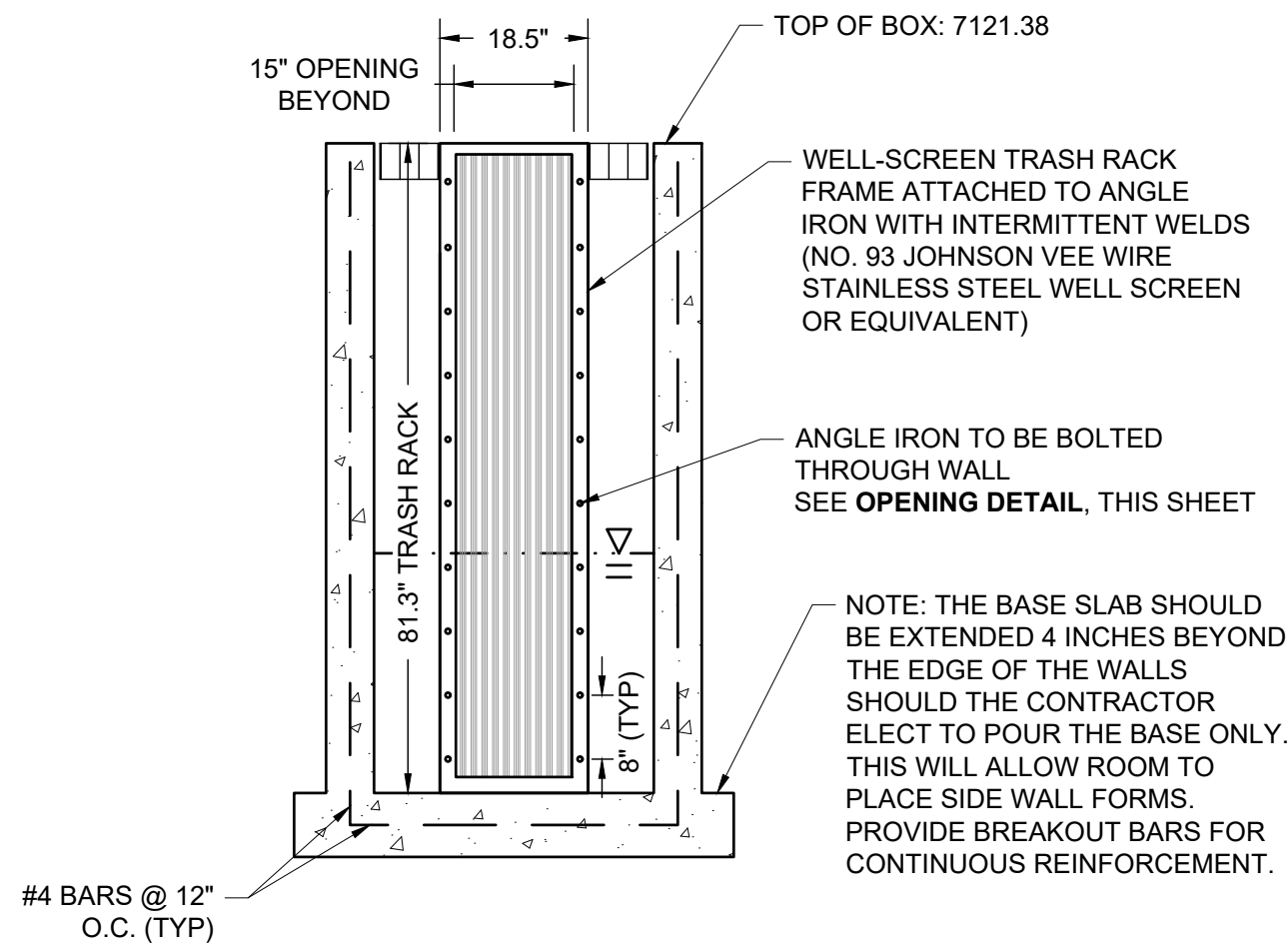
SHEET NUMBER

PD

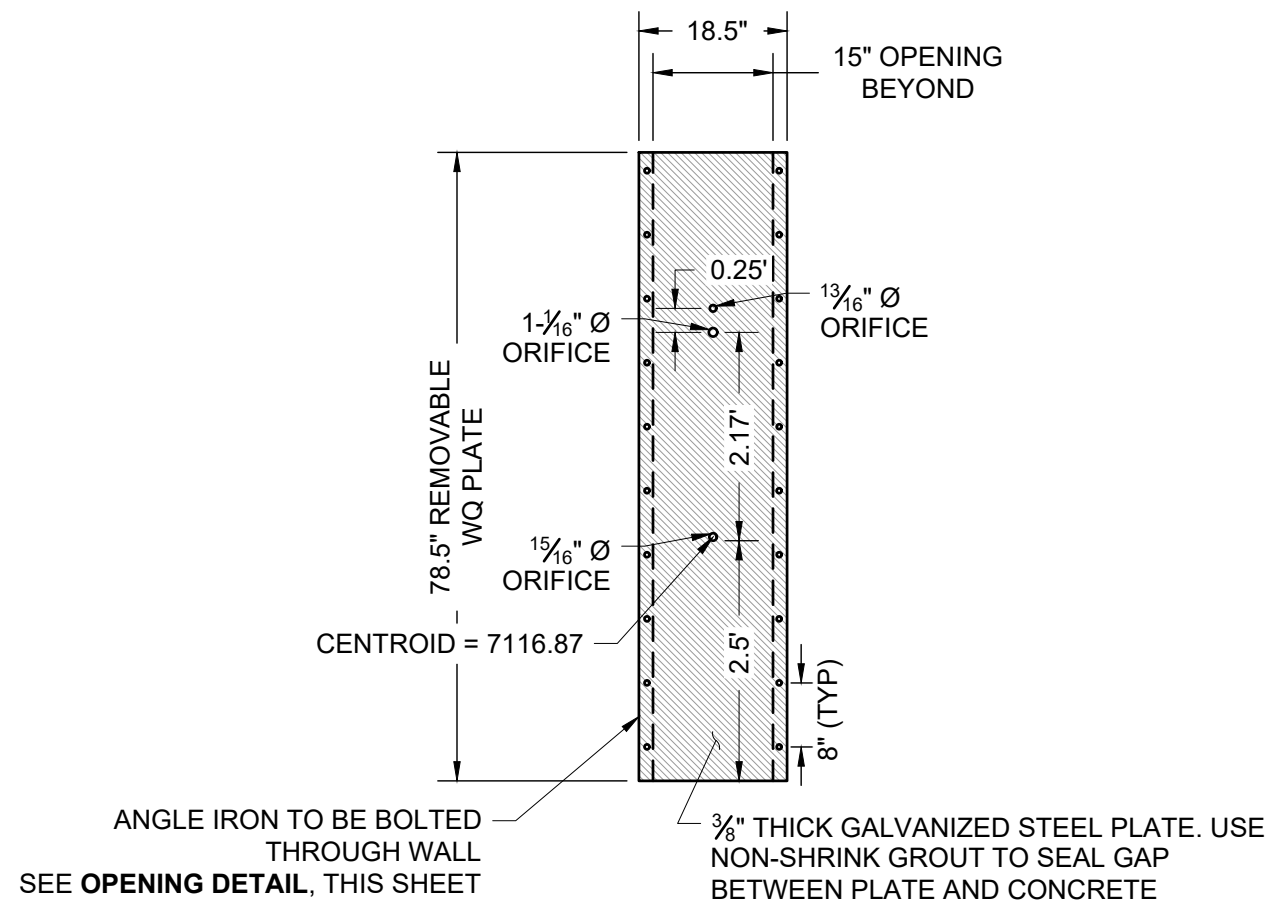
7 OF 12



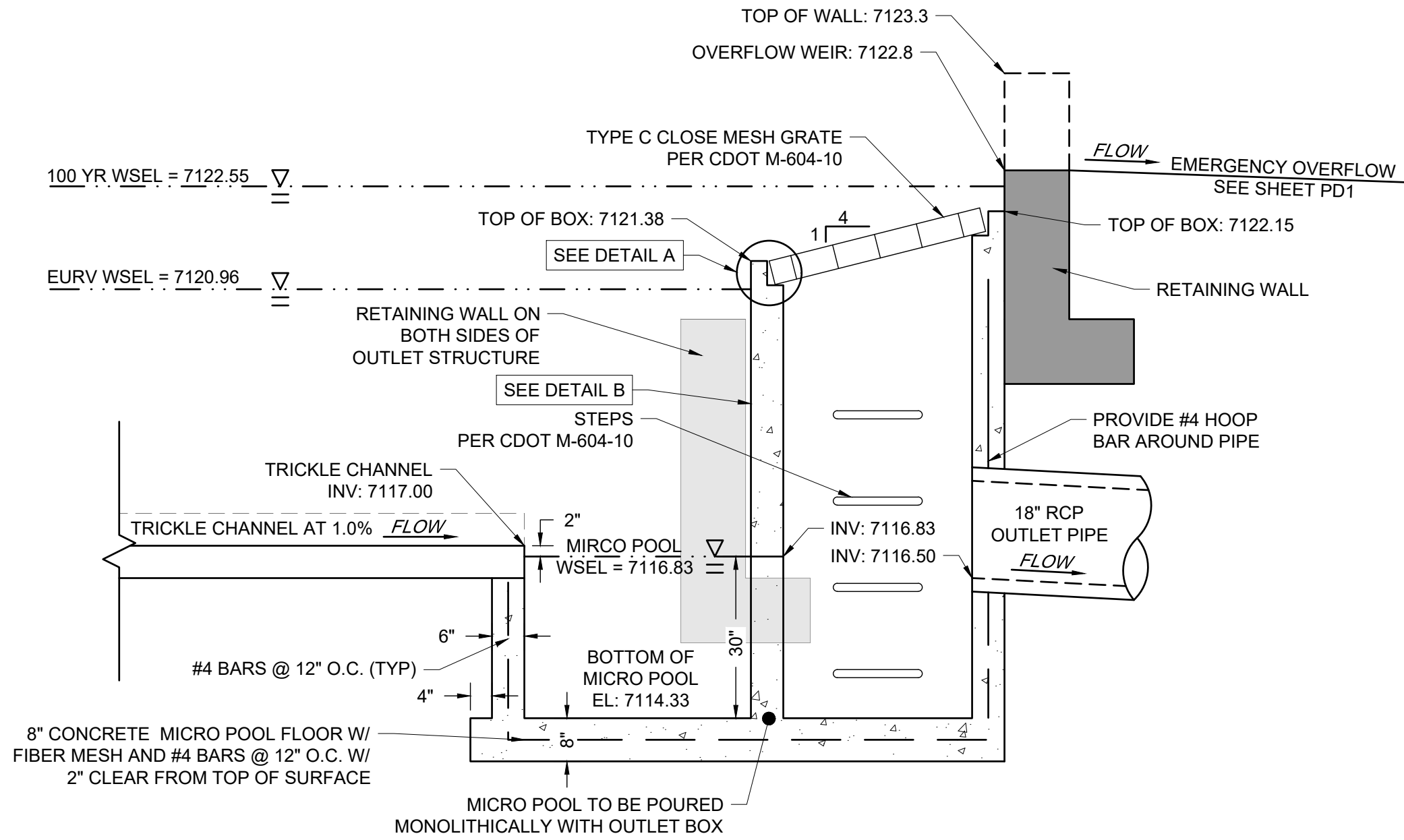
DETENTION POND OUTLET STRUCTURE MODIFIED TYPE C
SCALE: 1"=2'



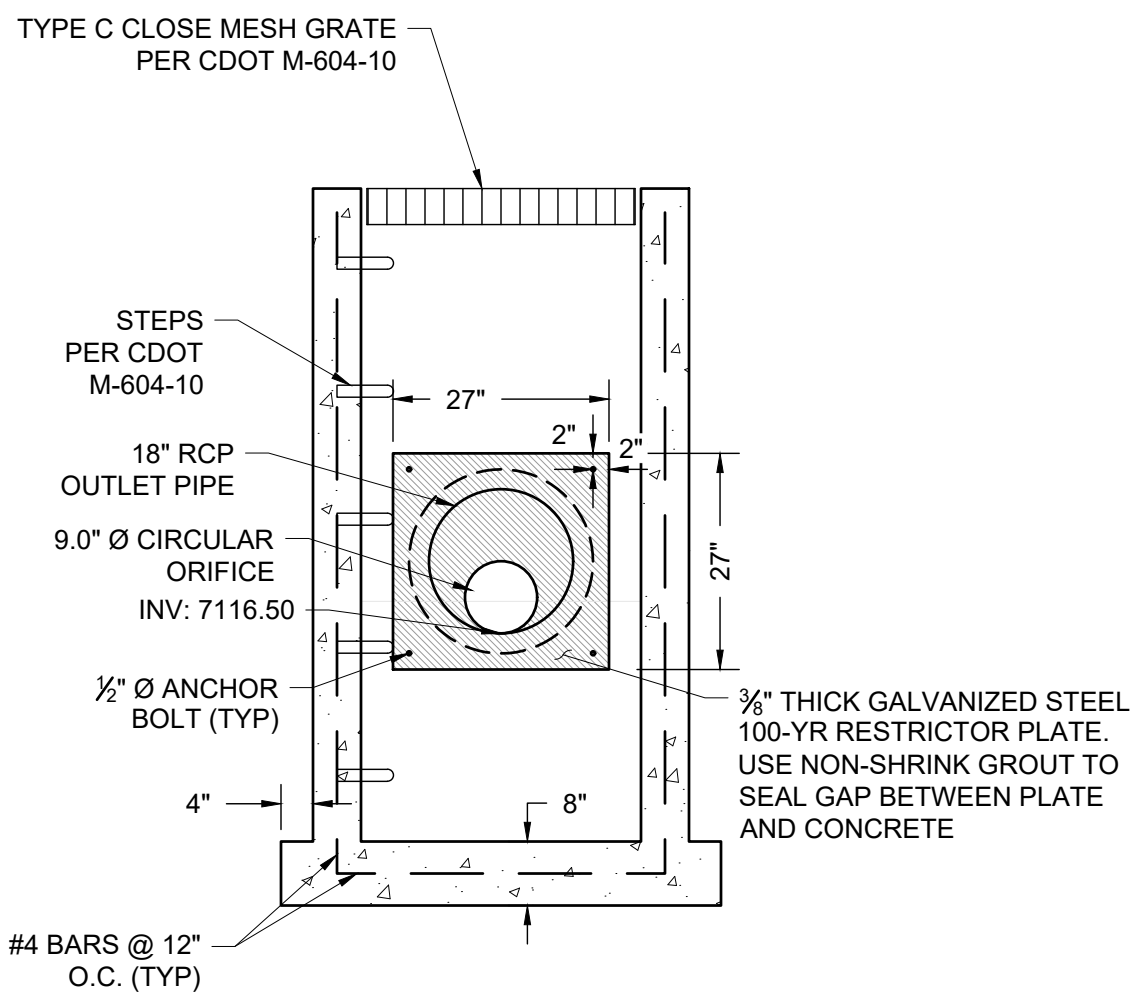
SECTION C
SCALE: 1"=2'



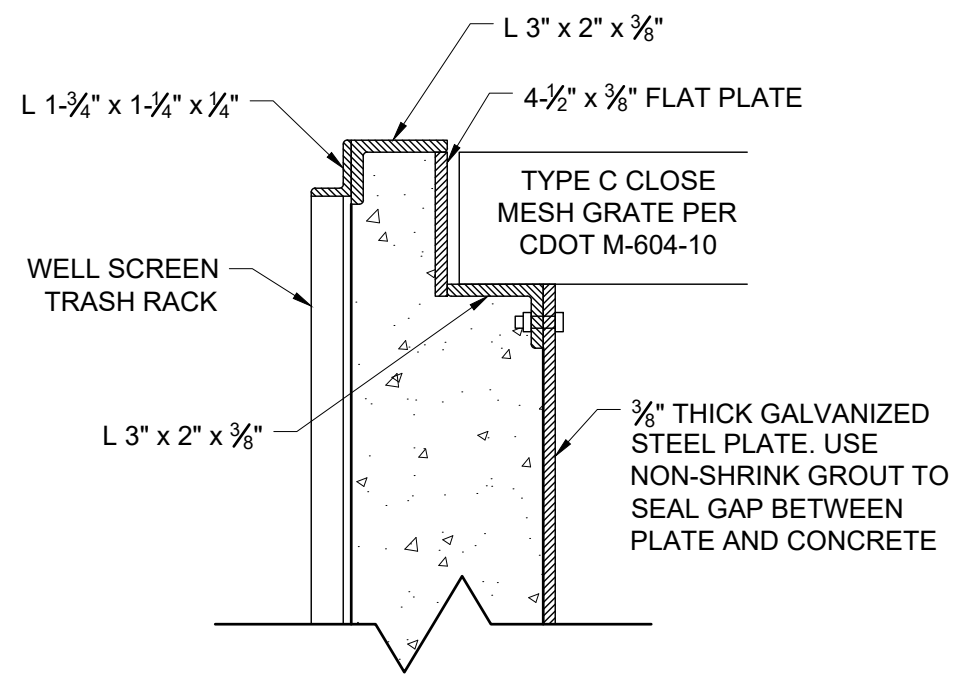
WATER QUALITY CONTROL PLATE DETAIL
SCALE: 1"=2'



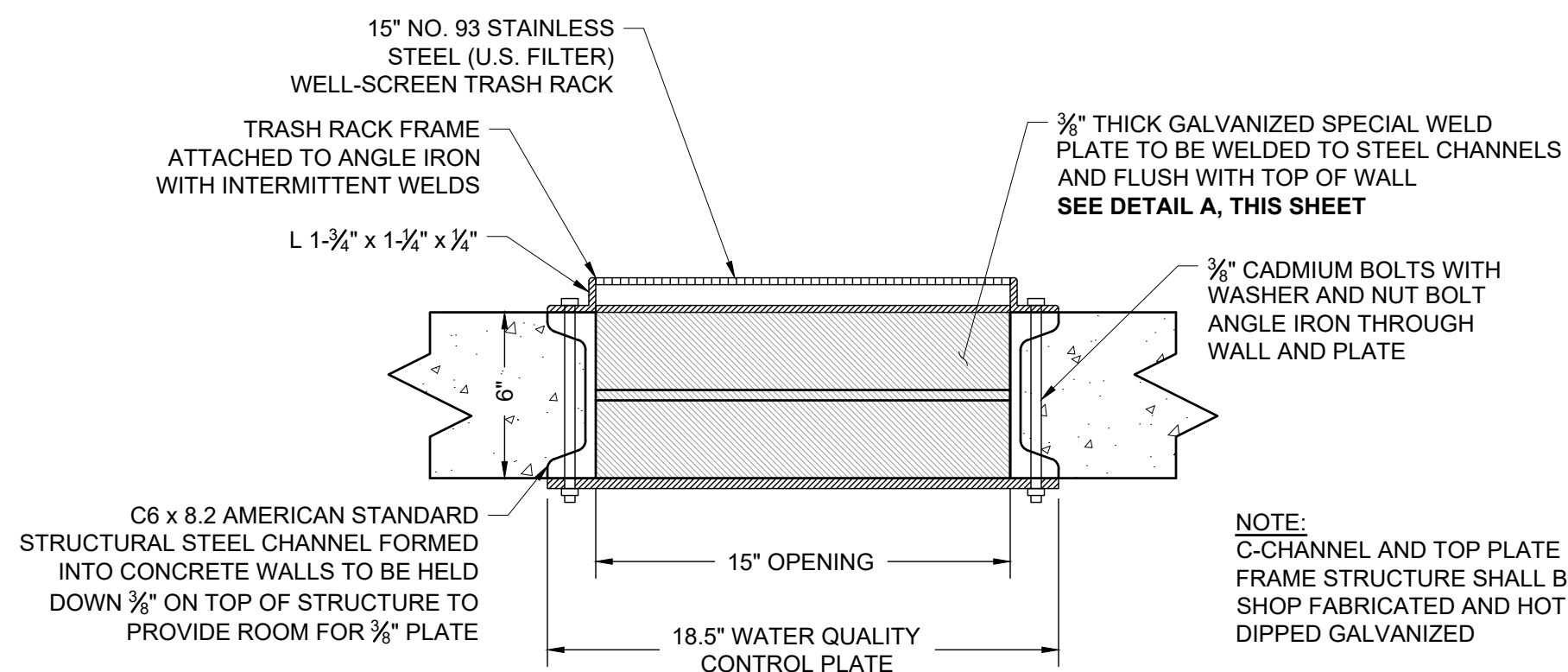
SECTION A
SCALE: 1"=2'



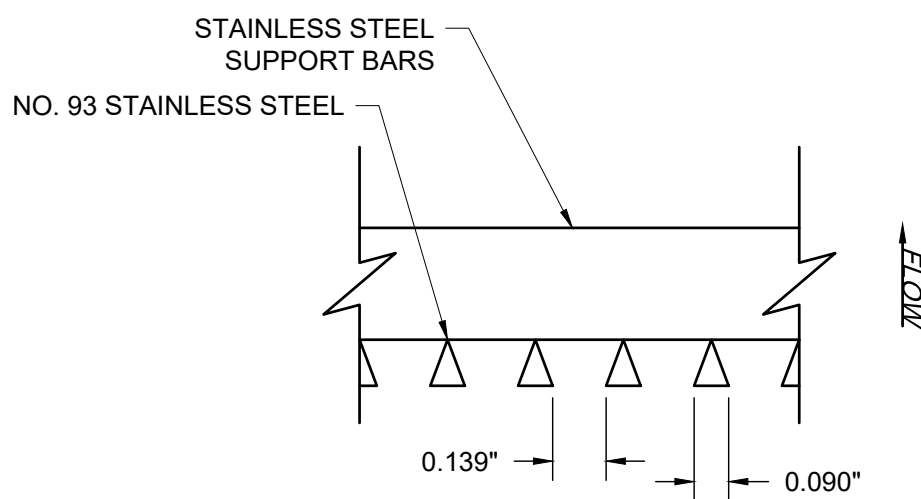
SECTION B
SCALE: 1"=2'



DETAIL A
SCALE: 1"=0.5'



OPENING DETAIL
SCALE: 1"=0.5'



DETAIL B
N.T.S.

NOTE:
CONTRACTOR MUST COMPLETE DETENTION POND GRADING AND PROVIDE DETENTION POND CERTIFICATION TO ENGINEER PRIOR TO CONSTRUCTING ANY OUTFALL STRUCTURE (WATER QUALITY PLATE, BOX INLET, WEIR, ETC). DETENTION POND CERTIFICATION NEEDS TO BE DONE AFTER THE SOD IS IN PLACE.

REV. NO.	DESCRIPTION	DATE
1		
2		
3		
4		
5		
6		
7		
8		
9		
10		
11		
12		
13		
14		
15		
16		
17		
18		
19		
20		
21		
22		
23		
24		
25		
26		
27		
28		
29		
30		
31		
32		
33		
34		
35		
36		
37		
38		
39		
40		
41		
42		
43		
44		
45		
46		
47		
48		
49		
50		
51		
52		
53		
54		
55		
56		
57		
58		
59		
60		
61		
62		
63		
64		
65		
66		
67		
68		
69		
70		
71		
72		
73		
74		
75		
76		
77		
78		
79		
80		
81		
82		
83		
84		
85		
86		
87		
88		
89		
90		
91		
92		
93		
94		
95		
96		
97		
98		
99		
100		

CONSTRUCTION DOCUMENTS
MONUMENT STEEL STRUCTURES
OUTLET STRUCTURE
18910 BASE CAMP ROAD
MONUMENT, COLORADO

PROJ NO: SSA
ENG :
CHKD:
DATE: 04/10/2019

SHEET NUMBER
OS
8 OF 12



4. FILTER FABRIC PROTECTION SHALL BE REMOVED WHEN ADEQUATE VEGETATIVE COVER IS ATTAINED IN THE DRAINAGE AREA AS APPROVED BY THE CITY.

3-25



* AN ALTERNATE 3/4" TO 1" GRAVEL FILTER OVER A WIRE SCREEN MAY BE USED IN PLACE OF GRAVEL BAGS. THE WIRE MESH SHALL EXTEND ABOVE THE TOP OF THE CONCRETE BLOCKS AND THE GRAVEL PLACED OVER THE WIRE SCREEN TO THE TOP OF THE CONCRETE BLOCKS.

Construction Detail and Maintenance Requirements



7. WHEN A BASIN IS INSTALLED NEAR A RESIDENTIAL AREA, FOR SAFETY REASONS, A SIGN SHALL BE POSTED AND THE AREA SECURED WITH A FENCE.

Construction Detail and Maintenance Requirements

TABLE SB-1

TABLE SB-2

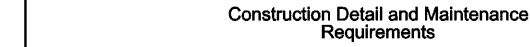
Application Techniques and Maintenance Requirements



3. SILT FENCES SHALL BE REMOVED WHEN ADEQUATE VEGETATIVE COVER IS ATTAINED AS APPROVED BY THE CITY.

3-36

Construction Detail and Maintenance Requirements



5. CONSTRUCTION ROADS ARE TO BE BUILT TO CONFORM TO SITE GRADES, BUT SHOULD NOT HAVE SIDE SLOPES OR ROAD GRADES THAT ARE EXCESSIVELY STEEP.

Application Examples

18910 BASE CAMP ROAD
MONUMENT, COLORADO

SHEET NUMBER

9 OF 2

MM-1

CWA INSTALLATION NOTES

1. SEE PLAN FOR VIEW FOR:
-CWA INSTALLATION LOCATION.
2. DO NOT LOCATE AN UNLINED CWA WITHIN 400' OF ANY NATURAL DRAINAGE PATHWAY OR WATERBODY. DO NOT LOCATE WITHIN 1,000' OF ANY WELLS OR DRINKING WATER SOURCES. IT IS THE RESPONSIBILITY OF THE CONTRACTOR TO DETERMINE IF ANY POTENTIALLY CONTAMINATING SOILS EXIST ON SITE. THE CWA MUST BE INSTALLED WITH AN IMPERMEABLE LINER (18 MIL. MIN. THICKNESS) OR SURFACE STORAGE ALTERNATIVES USING PRELIMINARIED CONCRETE WASHOUT DEVICES OR A LINED ABOVE GROUND STORAGE TANK.
3. THE CWA SHALL BE INSTALLED PRIOR TO CONCRETE PLACEMENT ON SITE.
4. CWA SHALL INCLUDE A FLAT SUBSURFACE PIT THAT BE AT LEAST 8" B' 8" SLOPES AND BE 10' OUT OF THE SUBSURFACE PIT SHALL BE 3:1 OR FLATTER. THE PIT SHALL BE AT LEAST 3' DEEP.
5. BERM SURROUNDING SIDES AND BACK OF THE CWA SHALL HAVE MINIMUM HEIGHT OF 1'.
6. VEHICLE TRACKING PAD SHALL BE SLOPED 2% TOWARDS THE CWA.
7. SIGNS SHALL BE PLACED AT THE CONSTRUCTION ENTRANCE, AT THE CWA, AND AT THE BERM. IF NECESSARY, IT IS CLEARLY INDICATE THE LOCATION OF THE CWA TO OPERATORS OF CONCRETE TRUCKS AND PUMP RIGS.
8. USE EXCAVATED MATERIAL FOR PERIMETER BERM CONSTRUCTION.

November 2010
Urban Drainage and Flood Control District
Urban Storm Drainage Criteria Manual Volume 3
CWA-3

Concrete Washout Area (CWA)

CWA MAINTENANCE NOTES

1. INSPECT BMPs EACH WORKDAY, AND MAINTAIN THEM IN EFFECTIVE OPERATING CONDITION. MAINTENANCE OF BMPs SHOULD BE PROACTIVE, NOT REACTIVE. INSPECT BMPs AS SOON AS POSSIBLE (AND ALWAYS WITHIN 24 HOURS) FOLLOWING A STORM THAT CAUSES SURFACE EROSION, AND REPAIR OR REPLACE NECESSARY MAINTENANCE.
 2. FREQUENT OBSERVATIONS AND MAINTENANCE ARE NECESSARY TO MAINTAIN BMPs IN EFFECTIVE OPERATING CONDITION. INSPECTIONS AND CORRECTIVE MEASURES SHOULD BE DOCUMENTED THOROUGHLY.
 3. WHERE BMPs HAVE FAILED, REPAIR OR REPLACEMENT SHOULD BE INITIATED UPON DISCOVERY OF THE FAILURE.
 4. THE CWA SHALL BE REPAIRED, CLEANED, OR ENLARGED AS NECESSARY TO MAINTAIN CAPACITY FOR CONCRETE WASTE. CONCRETE MATERIALS, ACCUMULATED IN PIT, SHALL BE REMOVED ONCE THE MATERIALS HAVE REACHED A DEPTH OF 2'.
 5. CONCRETE WASHOUT WATER, WASTED PILES OF CONCRETE AND ALL OTHER DEBRIS FROM THE SURFACE PIT SHALL BE TRANSPORTED FROM THE JOB SITE IN A WATER-TIGHT CONTAINER AND DISPOSED OF PROPERLY.
 6. THE CWA SHALL REMAIN IN PLACE UNTIL ALL CONCRETE FOR THE PROJECT IS PLACED.
 7. WHEN THE CWA IS REMOVED, COVER THE DISTURBED AREA WITH TOP SOIL, SEED AND MULCH OR OTHERWISE STABILIZED IN A MANNER APPROVED BY THE LOCAL JURISDICTION.
- (DETAIL ADAPTED FROM DOWNEY COUNTY, COLORADO AND THE CITY OF PARKER, COLORADO, NOT AVAILABLE IN AUTOCAD).
- NOTE:** MANY JURISDICTIONS HAVE BMP DETAILS THAT VARY FROM UFCD'S STANDARD DETAILS. LOCAL JURISDICTIONS AS TO WHICH DETAIL SHOULD BE USED WHEN DIFFERENCES ARE NOTED.

CWA-4
Urban Drainage and Flood Control District
Urban Storm Drainage Criteria Manual Volume 3
November 2010

SM-6



STABILIZED STAGING AREA INSTALLATION NOTES

1. SEE PLAN VIEW FOR
-LOCATION OF STAGING AREA(S).
-CONTRACTOR MAY ADJUST LOCATION AND SIZE OF STAGING AREA WITH APPROVAL
FROM THE LOCAL JURISDICTION.
2. STABILIZED STAGING AREA SHOULD BE APPROPRIATE FOR THE NEEDS OF THE SITE.
OVERSIZING RESULTS IN A LARGER AREA TO STABILIZE FOLLOWING CONSTRUCTION.
3. STAGING AREA SHALL BE STABILIZED PRIOR TO OTHER OPERATIONS ON THE SITE.
4. THE STABILIZED STAGING AREA SHALL CONSIST OF A MINIMUM 3" THICK GRANULAR
MATERIAL.
5. UNLESS OTHERWISE SPECIFIED BY LOCAL JURISDICTION, ROCK SHALL CONSIST OF DC
SPECS #703, AASHTO #3 GRADE AGGREGATE OR 6" (MINUS) ROCK.
6. ADDITIONAL PERIMETER BMPs MAY BE REQUIRED INCLUDING BUT NOT LIMITED TO SILT
FENCE AND CONSTRUCTION FENCING.

STABILIZED STAGING AREA MAINTENANCE NOTES

1. INSPECT BMPs EACH WORKDAY, AND MAINTAIN THEM IN EFFECTIVE OPERATING CONDITION. MAINTENANCE OF BMPs SHOULD BE PROACTIVE, NOT REACTIVE. INSPECT BMPs AS SOON AS POSSIBLE (AND ALWAYS WITHIN 24 HOURS) FOLLOWING A STORM THAT CAUSES SURFACE EROSION, AND PERFORM NECESSARY MAINTENANCE.
2. FREQUENT OBSERVATIONS AND MAINTENANCE ARE NECESSARY TO MAINTAIN BMPs IN EFFECTIVE OPERATING CONDITION. INSPECTIONS AND CORRECTIVE MEASURES SHOULD BE DOCUMENTED THOROUGHLY.
3. WHERE BMPs HAVE FAILED, REPAIR OR REPLACEMENT SHOULD BE INITIATED UPON DISCOVERY OF THE FAILURE.
4. ROCK SHALL BE REAPPLIED OR REGRADED AS NECESSARY IF RUTTING OCCURS OR UNDERLYING SUBGRADE BECOMES EXPOSED.

November 2010 Urban Drainage and Flood Control District SSA-3
 Urban Storm Drainage Criteria Manual Volume 3

Stabilized Staging Area (SSA)

STABILIZED STAGING AREA MAINTENANCE NOTES

5. STABILIZED STAGING AREA SHALL BE ENLARGED IF NECESSARY TO CONTAIN PARKING, STORAGE, AND UNLOADING/LOADING OPERATIONS.
6. THE STABILIZED STAGING AREA SHALL BE REMOVED AT THE END OF CONSTRUCTION. THE GRANULAR MATERIAL SHALL BE REMOVED OR, IF APPROVED BY THE LOCAL JURISDICTION, USED ON SITE, AND THE AREA COVERED WITH TOPSOIL, SEEDDED AND MULCHED OR OTHERWISE STABILIZED IN A MANNER APPROVED BY LOCAL JURISDICTION.

NOTE: MANY MUNICIPALITIES PROHIBIT THE USE OF RECYCLED CONCRETE AS GRANULAR MATERIAL FOR STABILIZED STAGING AREAS DUE TO DIFFICULTIES WITH RE-ESTABLISHMENT OF VEGETATION IN AREAS WHERE RECYCLED CONCRETE WAS PLACED.

NOTE: MANY JURISDICTIONS HAVE BMP DETAILS THAT VARY FROM UDFCD STANDARD DETAILS. CONSULT WITH LOCAL JURISDICTIONS AS TO WHICH DETAIL SHOULD BE USED WHEN DIFFERENCES ARE NOTED.

(DETAILS ADAPTED FROM DOUGLAS COUNTY, COLORADO, NOT AVAILABLE IN AUTOCAD)

SSA-4
Urban Drainage and Flood Control District
Urban Storm Drainage Criteria Manual Volume 3
November 2010



REV. NO.	DESCRIPTION	DATE
<		
<		
<		
<		
<		
<		
<		
<		
1	REVISIONS PER 1ST SUBMITTAL COMMENTS	06/11/2019

DRAINAGE EXHIBIT
MONUMENT STEEL STRUCTURES

EROSION CONTROL DETAILS

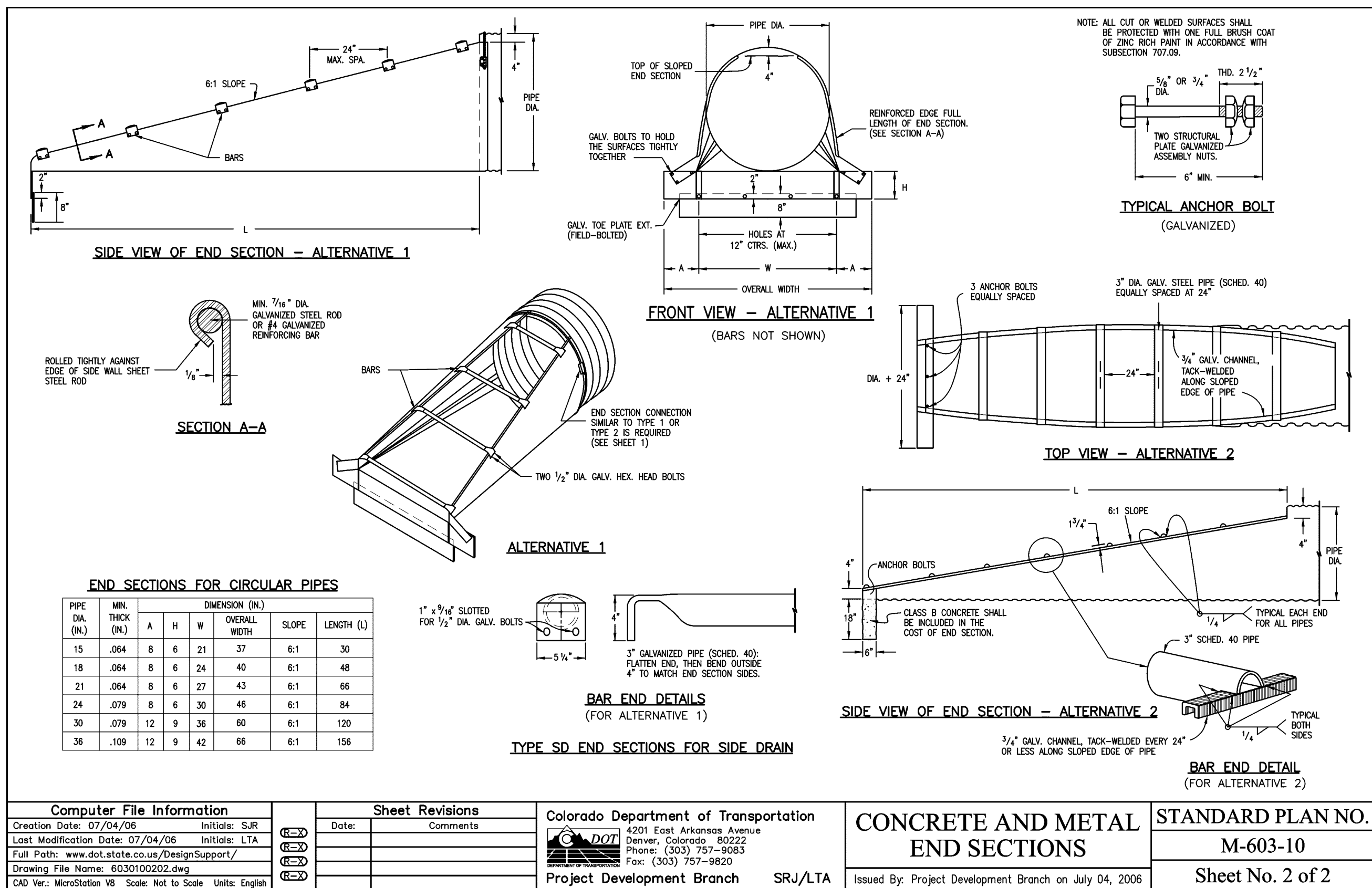
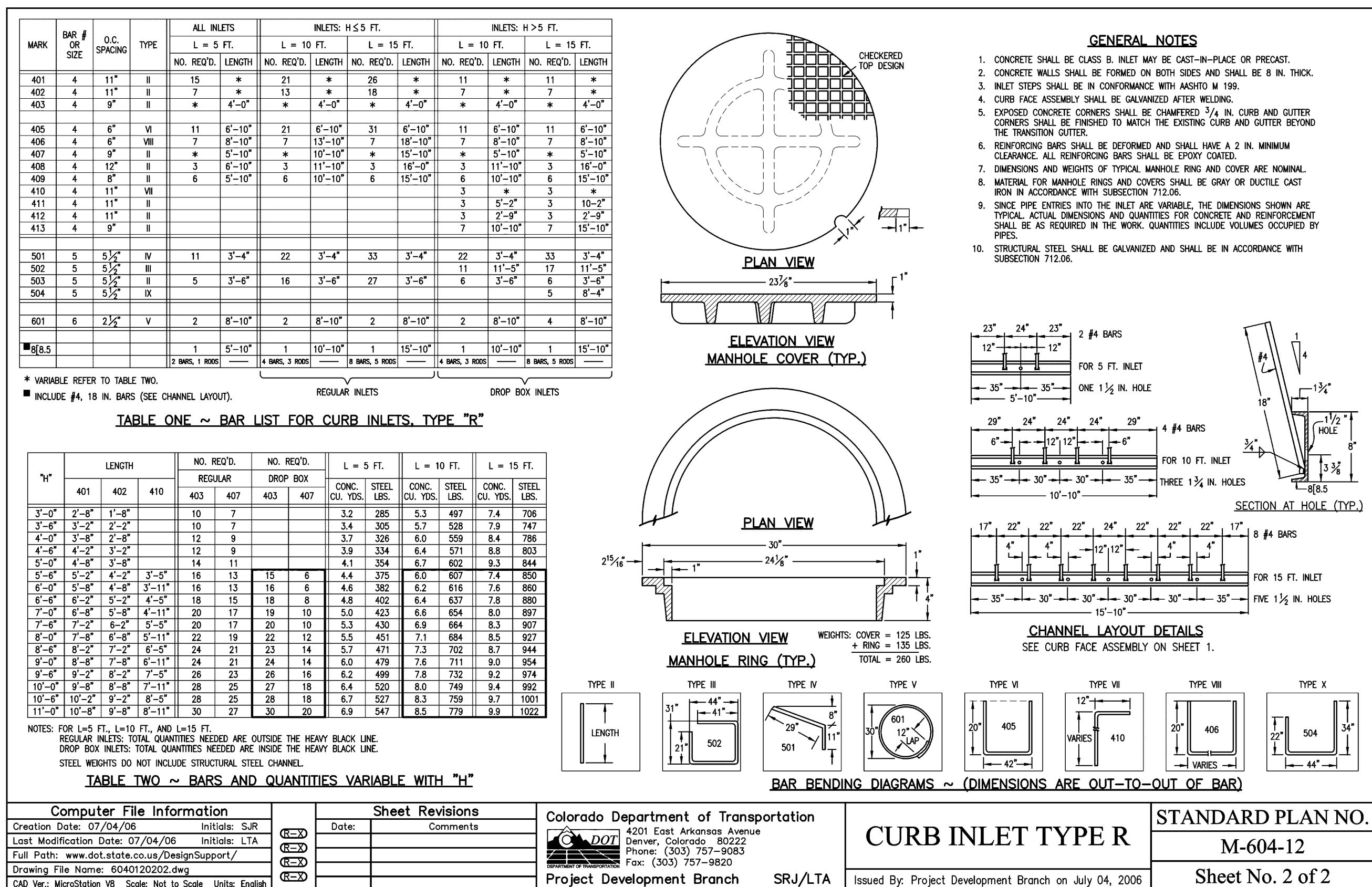
18910 BASE CAMP ROAD
MONUMENT, COLORADO

PROJ NO: SSA
ENG :
CHKD:
DATE : 04/15/2019

SHEET NUMBER

DT2

10 OF 2



DATE	
REV. NO.	DESCRIPTION
1	
2	
3	
4	
5	
6	
7	
8	
9	
10	
11	
12	
13	
14	
15	
16	
17	
18	
19	
20	
21	
22	
23	
24	
25	
26	
27	
28	
29	
30	
31	
32	
33	
34	
35	
36	
37	
38	
39	
40	
41	
42	
43	
44	
45	
46	
47	
48	
49	
50	
51	
52	
53	
54	
55	
56	
57	
58	
59	
60	
61	
62	
63	
64	
65	
66	
67	
68	
69	
70	
71	
72	
73	
74	
75	
76	
77	
78	
79	
80	
81	
82	
83	
84	
85	
86	
87	
88	
89	
90	
91	
92	
93	
94	
95	
96	
97	
98	
99	
100	
101	
102	
103	
104	
105	
106	
107	
108	
109	
110	
111	
112	
113	
114	
115	
116	
117	
118	
119	
120	
121	
122	
123	
124	
125	
126	
127	
128	
129	
130	
131	
132	
133	
134	
135	
136	
137	
138	
139	
140	
141	
142	
143	
144	
145	
146	
147	
148	
149	
150	
151	
152	
153	
154	
155	
156	
157	
158	
159	
160	
161	
162	
163	
164	
165	
166	
167	
168	
169	
170	
171	
172	
173	
174	
175	
176	
177	
178	
179	
180	
181	
182	
183	
184	
185	
186	
187	
188	
189	
190	
191	
192	
193	
194	
195	
196	
197	
198	
199	
200	
201	
202	
203	
204	
205	
206	
207	
208	
209	
210	
211	
212	
213	
214	
215	
216	
217	
218	
219	
220	
221	
222	
223	
224	
225	
226	
227	
228	
229	
230	
231	
232	
233	
234	
235	
236	
237	
238	
239	
240	
241	
242	
243	
244	
245	
246	
247	
248	
249	
250	
251	
252	
253	
254	
255	
256	
257	
258	
259	
260	
261	
262	
263	
264	
265	
266	
267	
268	
269	
270	
271	
272	
273	
274	
275	
276	
277	
278	
279	
280	
281	
282	
283	
284	
285	
286	
287	
288	
289	
290	
291	
292	
293	
294	
295	
296	
297	
298	
299	
300	
301	
302	
303	
304	
305	
306	
307	
308	
309	
310	
311	
312	
313	
314	
315	
316	
317	
318	
319	
320	
321	
322	
323	
324	
325	
326	
327	
328	
329	
330	
331	
332	
333	
334	
335	
336	
337	
338	
339	
340	
341	
342	
343	
344	
345	
346	
347	
348	
349	
350	
351	
352	
353	
354	
355	
356	
357	
358	
359	
360	
361	
362	
363	
364	
365	
366	
367	
368	
369	
370	
371	
372	
373	
374	
375	
376	
377	
378	
379	
380	
381	
382	
383	
384	
385	
386	
387	
388	
389	
390	
391	
392	
393	
394	
395	
396	
397	
398	
399	
400	
401	
402	
403	
404	
405	
406	
407	
408	
409	
410	
411	
412	
413	
414	
415	
416	
417	
418	
419	
420	
421	
422	
423	
424	
425	
426	
427	
428	
429	
430	
431	
432	
433	
434	
435	
436	
437	
438	
439	
440	
441	
442	
443	
444	
445	
446	
447	
448	
449	
450	
451	
452	
453	
454	
455	
456	
457	
458	
459	
460	
461	
462	
463	
464	
465	
466	
467	
468	
469	
470	
471	
472	
473	
474	
475	
476	
477	
478	
479	
480	
481	
482	
483	
484	
485	
486	
487	
488	
489	
490	
491	
492	
493	
494	
495	
496	
497	
498	
499	
500	
501	
502	
503	
504	
505	
506	
507	
508	
509	
510	
511	
512	
513	
514	
515	
516	
517	
518	
519	
520	
521	
522	
523	
524	
525	
526	
527	
528	
529	
530	
531	
532	
533	
534	
535	
536	
537	
538	
539	
540	
541	
542	
543	
544	
545	
546	
547	
548	
549	
550	
551	
552	
553	
554	
555	
556	
557	
558	
559	
560	
561	
562	
563	
564	
565	
566	
567	
568	
569	
570	
571	
572	
573	
574	
575	
576	
577	
578	
579	
580	
581	
582	
583	
584	
585	
586	
587	
588	
589	
590	
591	
592	
593	
594	
595	
596	
597	
598	
599	
600	
601	
602	
603	
604	
605	
606	
607	
608	
609	
610	
611	
612	
613	
614	
615	
616	
617	
618	
619	
620	
621	
622	
623	
624	
625	
626	
627	
628	
629	
630	
631	
632	
633	
634	
635	
636	
637	
638	
639	
640	
641	
642	
643	
644	
645	
646	
647	
648	
649	
650	
651	
652	
653	
654	
655	
656	
657	
658	
659	
660	
661	
662	
663	
664	
665	
666	
667	
668	
669	
670	
671	
672	
673	
674	
675	
676	
677	
678	
679	
680	
681	
682	
683	
684	
685	
686	