

# EL PASO COUNTY



## APPLICATION FOR PRELIMINARY ACCEPTANCE INTO THE EL PASO COUNTY MAINTENANCE SYSTEM

SUBDIVISION REDTAIL RANCH F1 R - T - S PLAT 14432  
 APPLICANT \_\_\_\_\_ 65-12-9 DATE PLAT RECORDED 12/6/2019  
 FILE REFERENCE SF-18-021 BOCC HEARING \_\_\_\_\_  
 NOTES \_\_\_\_\_

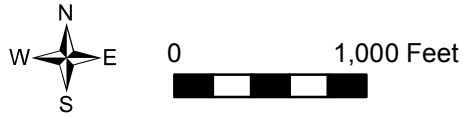
ROAD NO.	ROAD NAME	FROM	TO	LENGTH FT/MI	ROW WIDTH	SURFACE TYPE	SURF WDTH	F/F CG	CURB TYPE
1265	WARD LN	CDS	SANCTUARY PINE DR	118'/0.02 mi	60'				
1265	WARD LN	SANCTUARY PINE DR	END	826'/0.16 mi	60'				
4570	SANCTUARY PINE DR	WARD LN	VOLLMER RD	1965'/0.37 mi	60'				
<b>TOTAL LENGTH ACCEPTED</b>				<b>2909'/0.55 mi</b>					

**APPROVALS**

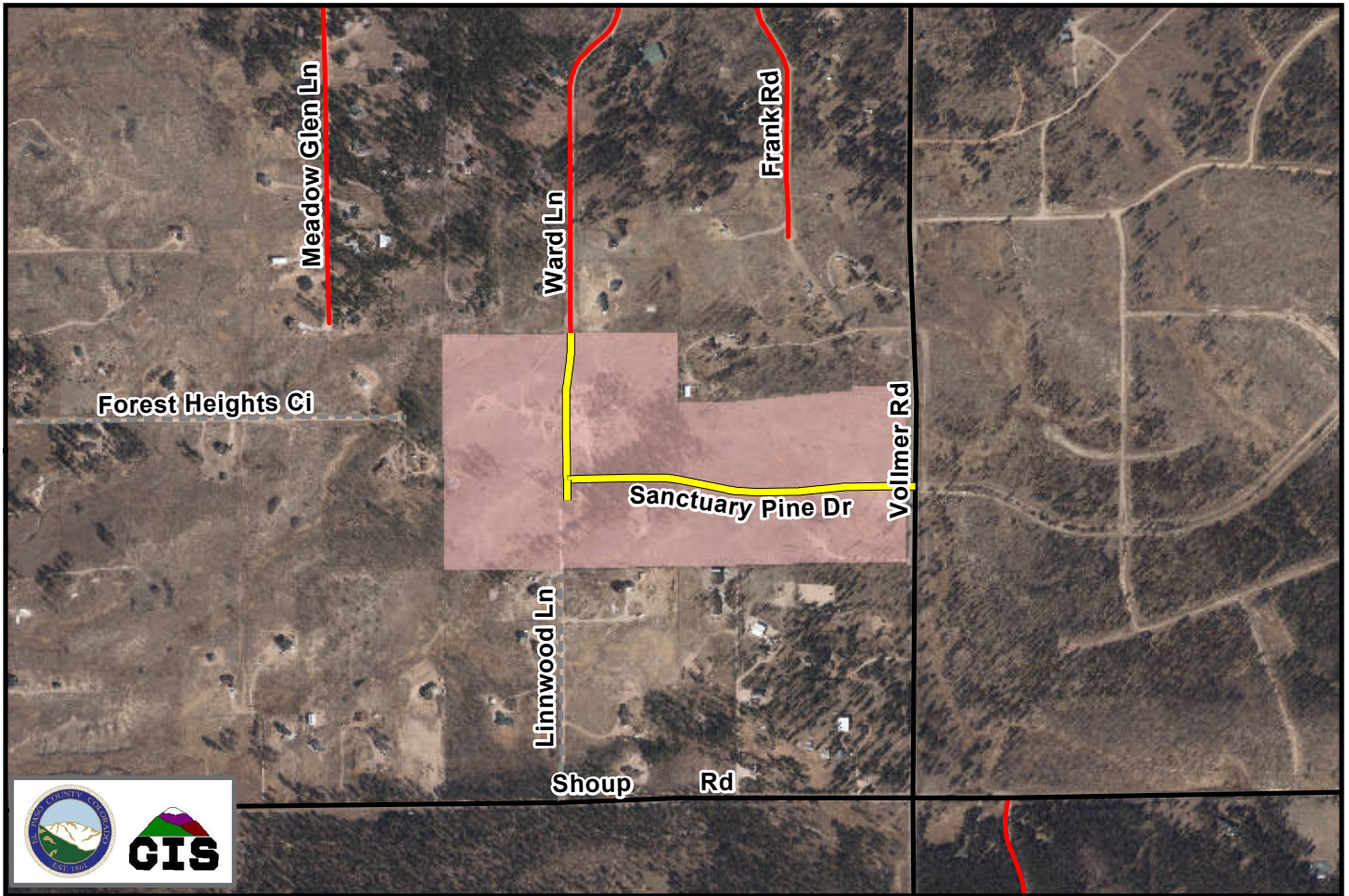
\_\_\_\_\_ ROADS DATABASE TECHNICIAN  
 \_\_\_\_\_ INSPECTION SUPERVISOR (DSD)  
 \_\_\_\_\_ DEVELOPMENT SERVICES DIR

**ACCEPTANCE RECOMMENDED**

\_\_\_\_\_ COUNTY ENGINEER  
 \_\_\_\_\_ PUBLIC WORKS DIR



**Redtail Ranch F1  
Preliminary Acceptance, Plat 14432**



Ward Ln  
From Cds  
(N) North  
to Sanctuary Pine Dr  
Approx. Length: 118' - 0.02 mi

Ward Ln  
From Sanctuary Pine Dr  
(N) North  
to End  
Approx. Length: 826' - 0.16 mi

Sanctuary Pine Dr  
From Ward Ln  
(E) East  
to Vollmer Rd  
Approx. Length: 1965' - 0.37 mi

**Legend**

- Accepted for Maint.
- Paved and Maintained
- Gravel and Maintained
- - - Not Accepted for Maintenance
- - - Private Roads
- Other Government Maintenance
- - - Future NHS
- Redtail Ranch F1