

Please remove
checklist from the plan



2880 International Circle, Suite 110
Colorado Springs, CO 80910
Phone 719-520-6300
Fax 719-520-6695
www.elpasoco.com

**EL PASO COUNTY PLANNING AND
COMMUNITY DEVELOPMENT
DEPARTMENT**

LIGHTING PLAN CHECKLIST

Revised: January 2022

Lighting Plan		
The purpose of the lighting plan is to address the physical effects of lighting and the effects lighting may have on the surrounding neighborhood and public rights-of-way. The lighting plan shall meet the standards of Chapter 6 of the Land Development Code.		
The PCD Director may modify the applicable requirements, including requiring additional items or removing items, based upon the project and site-specific circumstances.		
	Applicant	PCD
NOTE: Please confirm each item below has been included by placing a check mark in the "Applicant" column. See right for an example. The "PCD" column is for office use only.		✓ Office use only
1	Owner name, contact telephone number, and email	X
2	Applicant name (if not owner), contact telephone number, and email	X
3	Plan preparer contact telephone number and email	X
4	Property address	X
5	Date, north arrow, and a graphic scale	X
6	Vicinity map showing the property in relation to major roadways, if not otherwise provided with the associated site plan	X
7	The building footprint for all structures depicted and labeled.	X
8	The location and height of all existing and proposed illuminating devices, including but not limited to, all parking area lights and external structural lights.	X
9	Detailed description of illuminating devices, fixtures, lamps, supports, reflectors, installation, and electrical details and other devices to include an elevation drawing. The description may include, but is not limited to, manufacturers specifications and catalog cuts sheets, and drawings. A key and legend may be required at the discretion of the PCD.	X
10	Photometric data and plan, including maps and diagrams furnished by manufacturers or similar showing the angle of the cut off or light emission.	X
11	Photometric plan depicting the lighting levels (foot candles) throughout the property, at property lines, and along any adjacent rights-of-way.	X
12	Location of all existing and proposed easements	
13	Any other additional items as required by the PCD Director:	

FOX RUN NATURE CENTER

FOX RUN REGIONAL PARK, EL PASO COUNTY, COLORADO

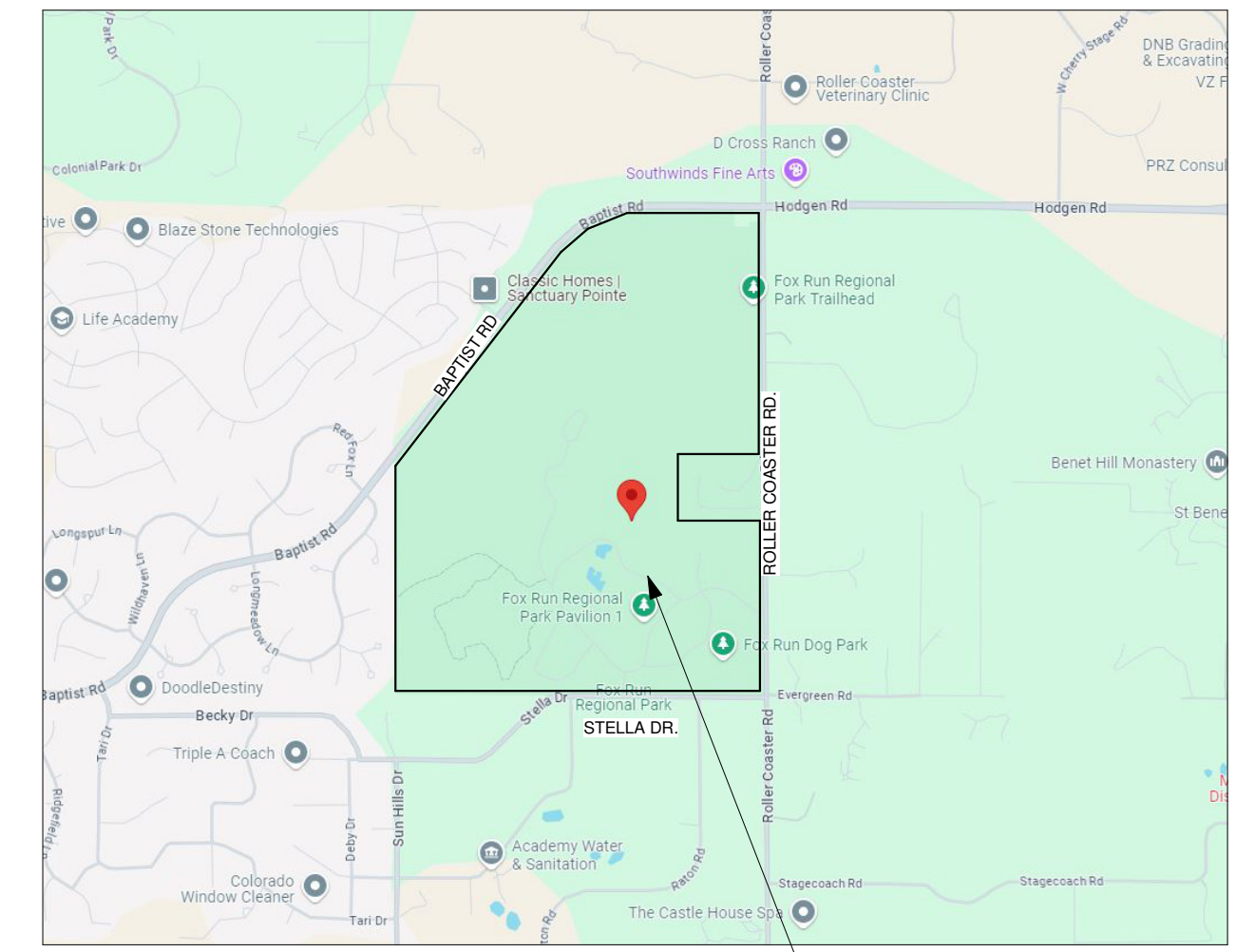


File No. PPR2349



PARK MAP

SCALE: NTS



VICINITY MAP

SCALE: NTS



PROJECT DATA

OWNER:

EL PASO COUNTY
200 S CASCADE AVE STE 150
COLORADO SPRINGS CO, 80903
719-520-7529
JASON MEYER
TODD MARTS

APPLICANT:

BASILINE CORPORATION
1046 ELKTON DRIVE
COLORADO SPRINGS, CO 80907
719 531-6200
STEVE BAGGS

PROJECT ADDRESS:

2110 STELLA DR.
COLORADO SPRINGS, COLORADO
809021

TAX SCHEDULE NUMBER:

6100000297

LEGAL DESCRIPTION:

NW4 & SW4, EX NE4SW4 OF SEC 28-11-66 E2SE4, S2SE4NE4, THAT PART OF N2SE4NE4 OF SEC 29 LY SELY OF A STRAIGHT LN CONNECTING SW4 AND NE COR OF SD N2 SEC 29-11-66

LOT SIZE:

398.5 ACRES

ZONING:

RR-5

PROJECT DESCRIPTION:

NEW SINGLE STORY, TWO BUILDING NATURE CENTER WITH A VIEWING TOWER AND CANOPY WALK. THE NON-COMBUSTIBLE CONSTRUCTION BUILDING WITH A MULTI-PURPOSE ROOM, EXHIBIT SPACE, OUTDOOR DECK, OFFICES, STORAGE AND RESTROOMS

TOTAL BUILDING AREA:

8,245 SQFT WITH A 4,565 SQFT OUTDOOR PATIO

NUMBER OF LEVELS:

1 STORY WITH CANOPY WALK AND VIEWING PLATFORM

BUILDING HEIGHT:

75'-0"

PARKING CALCULATIONS:

PARKING SPACES	39 SPACES
ACCESSIBLE PARKING SPACES	2 SPACES
TOTAL SPACES	41 SPACES
BUS PARKING	3 SPACES

PROJECT TEAM

OWNER:

El Paso County
200 S Cascade Ave Ste 150
Colorado Springs CO, 80903
719-520-7529
Jason Meyer
Todd Marts

STRUCTURAL ENGINEER:

RMG Engineers
2910 Austin Bluffs Parkway
Colorado Springs, CO 80918
719 548-0600
Mike Thompson

ARCHITECT:

TDG Architecture
201 E. Las Animas Street, Ste. 113
Colorado Springs, CO 80903
719-623-5641
Sharon Allen
Mark Tremmel

GREEN INITIATIVES, MECHANICAL, ELECTRICAL, ENGINEER:

PCD Engineering, Inc.
4303 E. Brighton Boulevard, Suite #3
Denver, CO 80216
303 733-3078
Jacob Goodman, LEEDap, BEMP
Alex Pontasch
Walter Shoup

LANDSCAPE ARCHITECT:

Tapis Associates
540 Buckeye, Terrace Level
Colorado Springs, CO 80919
719 593-1540
Priscilla Marbaker

GEOTECHNICAL ENGINEERING:

RMG Engineers
2910 Austin Bluffs Parkway
Colorado Springs, CO 80918
719 548-0600
Kelli Zigler, PE

EXHIBIT DESIGNER:

Studio Tectonic
400 Marine Street, Carriage House
Boulder, CO 80302
720 398-3030
Seth Frankel
Zach Mosely

TRAFFIC ENGINEER:

SM Rocha, LLC
8703 Yates Drive, Suite 210
Westminster, CO 80031
719 203-6639
Mike Rocha, TOPS, TSOS
Brandon Wilson

CIVIL ENGINEER:

Baseline Engineering Corporation
112 N. Rubey Drive, #210
Golden, CO 80403
303 940-9966
Steven G. Baggs, PE
Alan Lunsford

COST ESTIMATOR:

Colarelli Construction
111 S. Tejon St., Suite 112
Colorado Springs, CO 80903
719 475-7997
Mike Senger

NOTE:
THE OWNER AGREES ON BEHALF OF HIM/HERSELF AND ANY DEVELOPER OR BUILDING SUCCESSORS AND ASSIGNEES THAT SUBDIVIDER AND/OR SUCCESSORS AND ASSIGNEES SHALL BE REQUIRED TO PAY TRAFFIC IMPACT FEES IN ACCORDANCE WITH THE EL PASO COUNTY ROAD IMPACT FEE PROGRAM RESOLUTION (RESOLUTION NO. 19-471), OR ANY AMENDMENTS THERETO, AT OR PRIOR TO THE TIME OF BUILDING PERMIT SUBMITTALS. THE FEE OBLIGATION, IF NOT PAID AT FINAL PLAT RECORDING, SHALL BE DOCUMENTED ON ALL SALES DOCUMENTS AND ON PLAT NOTES TO ENSURE THAT A TITLE SEARCH WOULD FIND THE FEE OBLIGATION BEFORE SALE OF THE PROPERTY.

REVISIONS		
DATE	FOR	

NOT FOR CONSTRUCTION

TDG Architecture

201 East Las Animas, Suite 113
Colorado Springs, CO 80903
719-623-5641 (Phone)
719-623-5643 (Fax)

FOX RUN NATURE CENTER

Fox Run Regional Park
2110 Stella Drive
Colorado Springs, CO 80921

DEVELOPMENT
PLAN - COVER
SHEET

DATE: 10/24/24

DRAWN BY: tdg

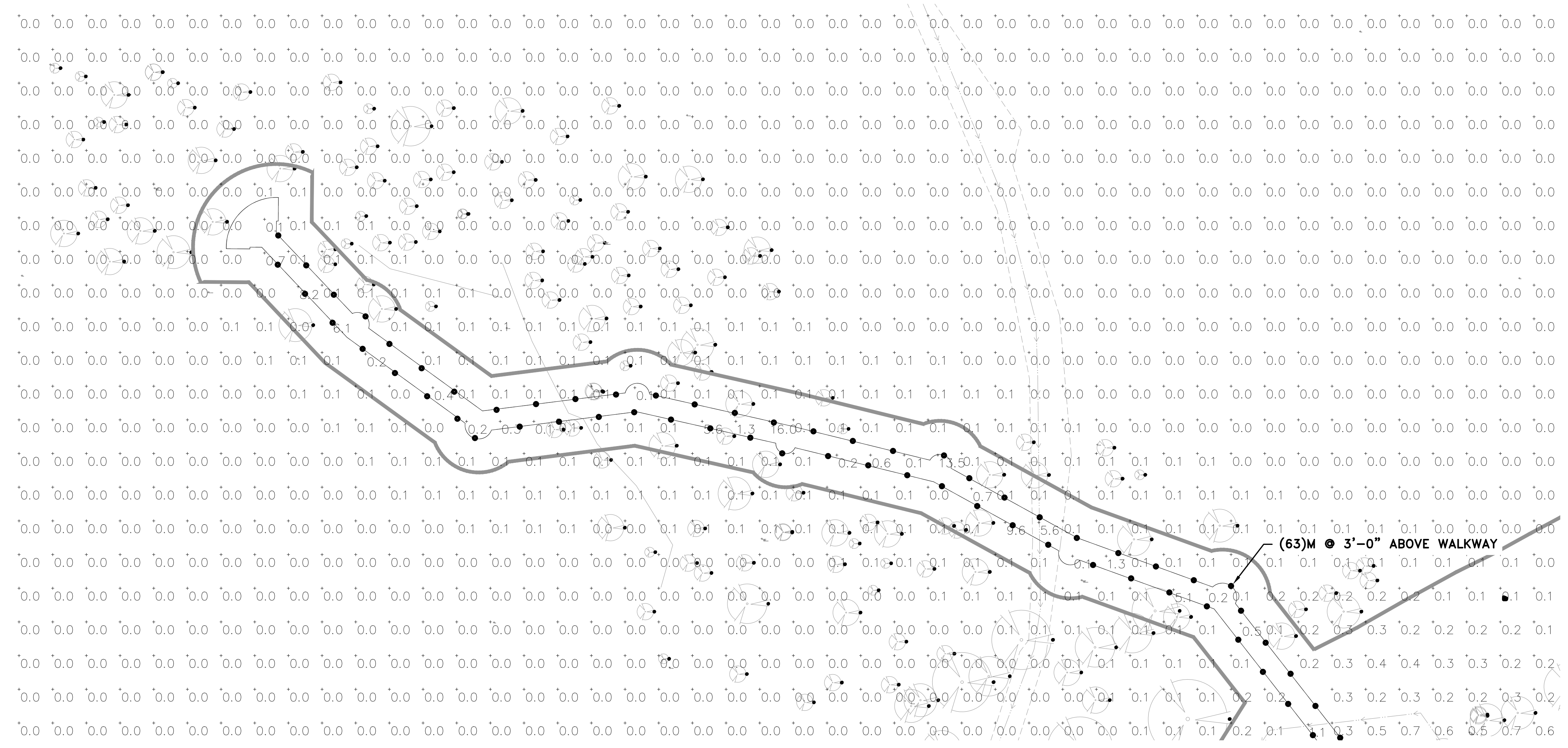
CHECKED BY: TDG

PROJECT NO.: 22164

SHEET:

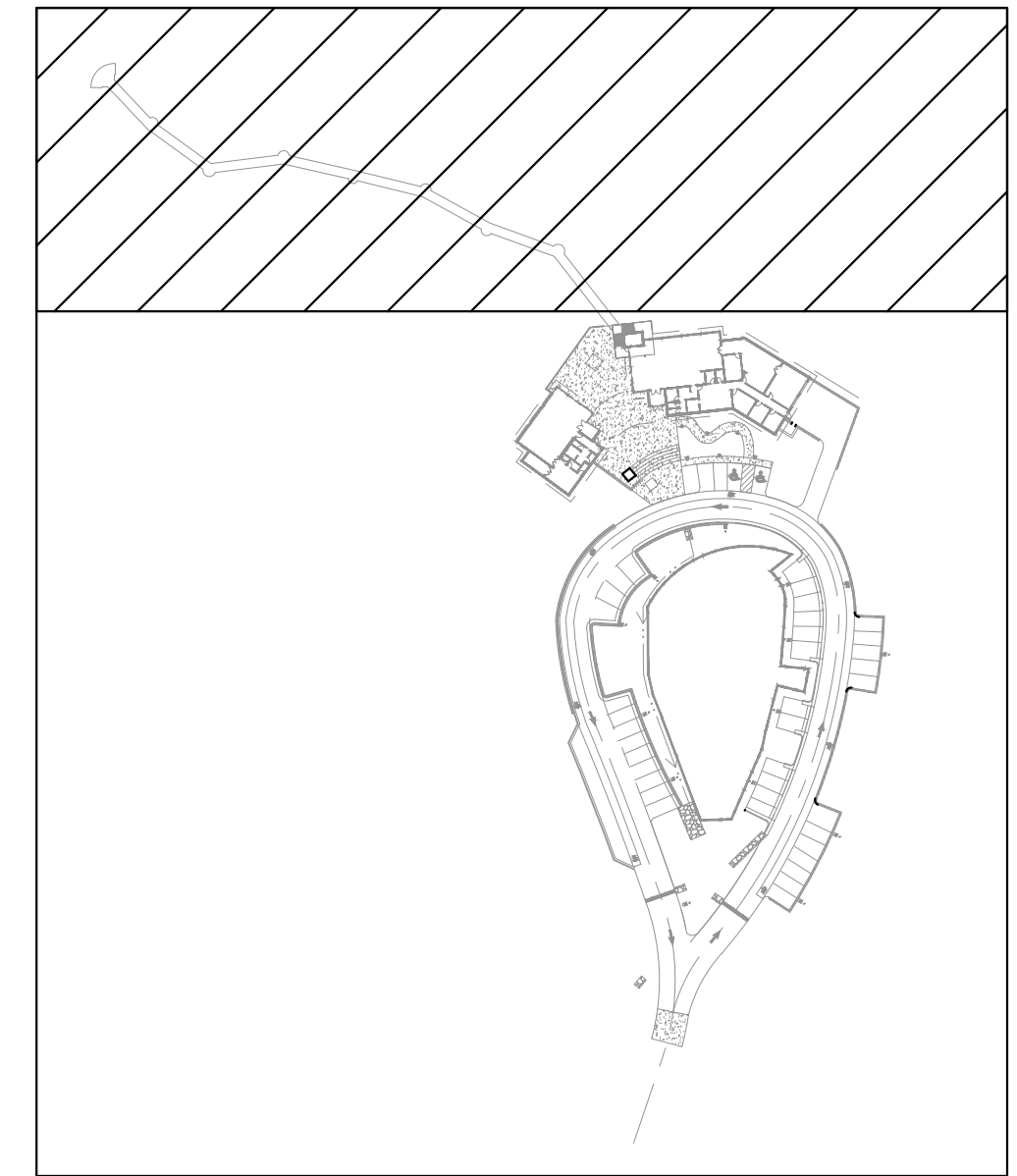
DP-CS

1 OF XX



1

PHOTOMETRIC SITE PLAN – CANOPY WALKWAY
SCALE: 1" = 20'



KEY PLAN
SCALE: NONE

REVISIONS		
DATE	FOR	

NOT FOR CONSTRUCTION

TDG Architecture

201 East Las Animas, Suite 113
Colorado Springs, CO 80903
719.623.5641 (Phone)
719.623.5643 (Fax)

Bowman

323 3RD AVENUE #100
LONGMONT, CO 80501
TEL: 303.678.1108
BOWMAN.COM

Fox Run Nature Center

Fox Run Regional Park
2110 Stella Drive
Colorado Springs, CO 80921

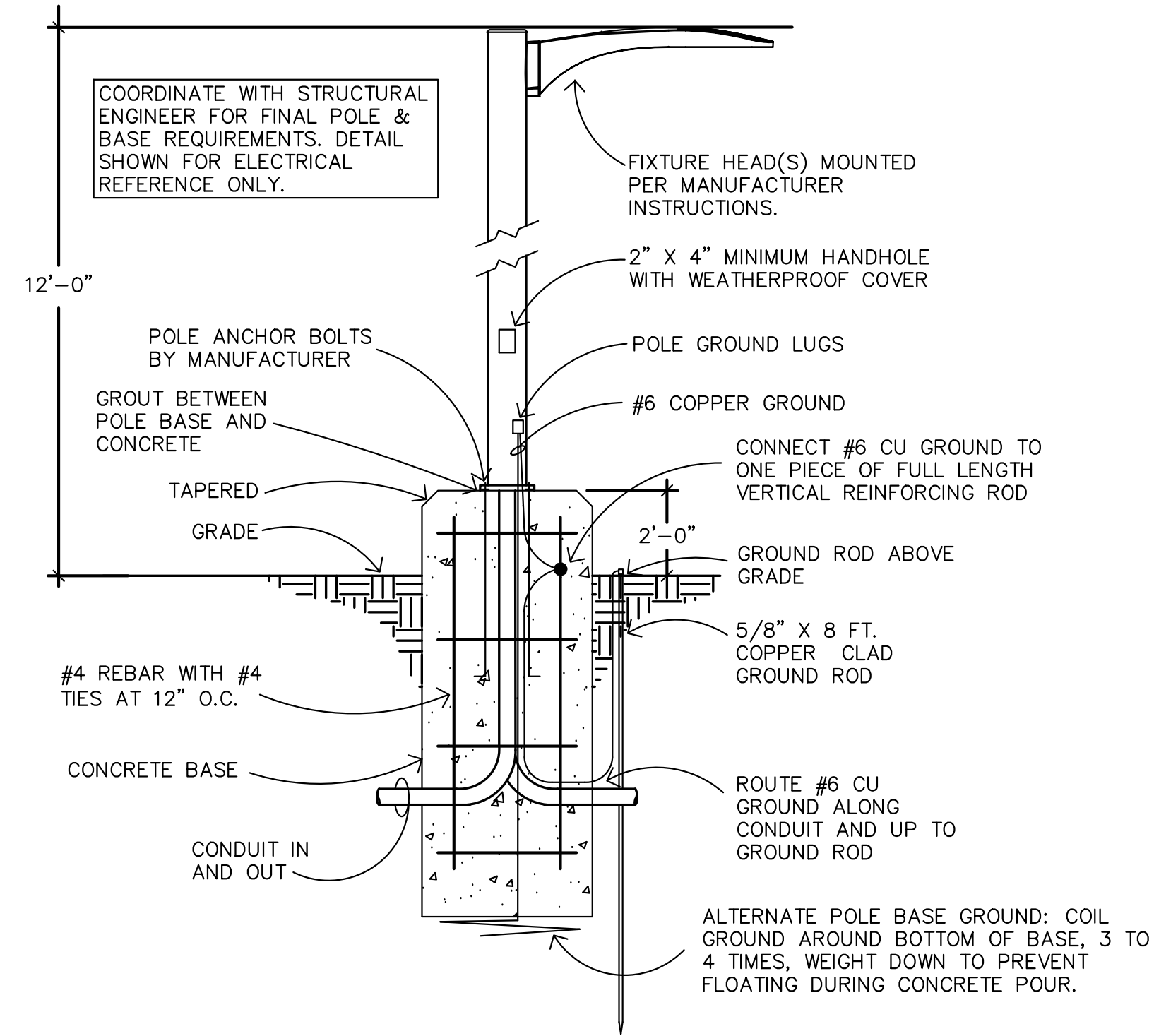
PHOTOMETRIC SITE PLAN - CANOPY WALKWAY

DATE: 10/21/24
DRAWN BY: CW/AP
CHECKED BY: AP/WN
PROJECT NO.: 230326

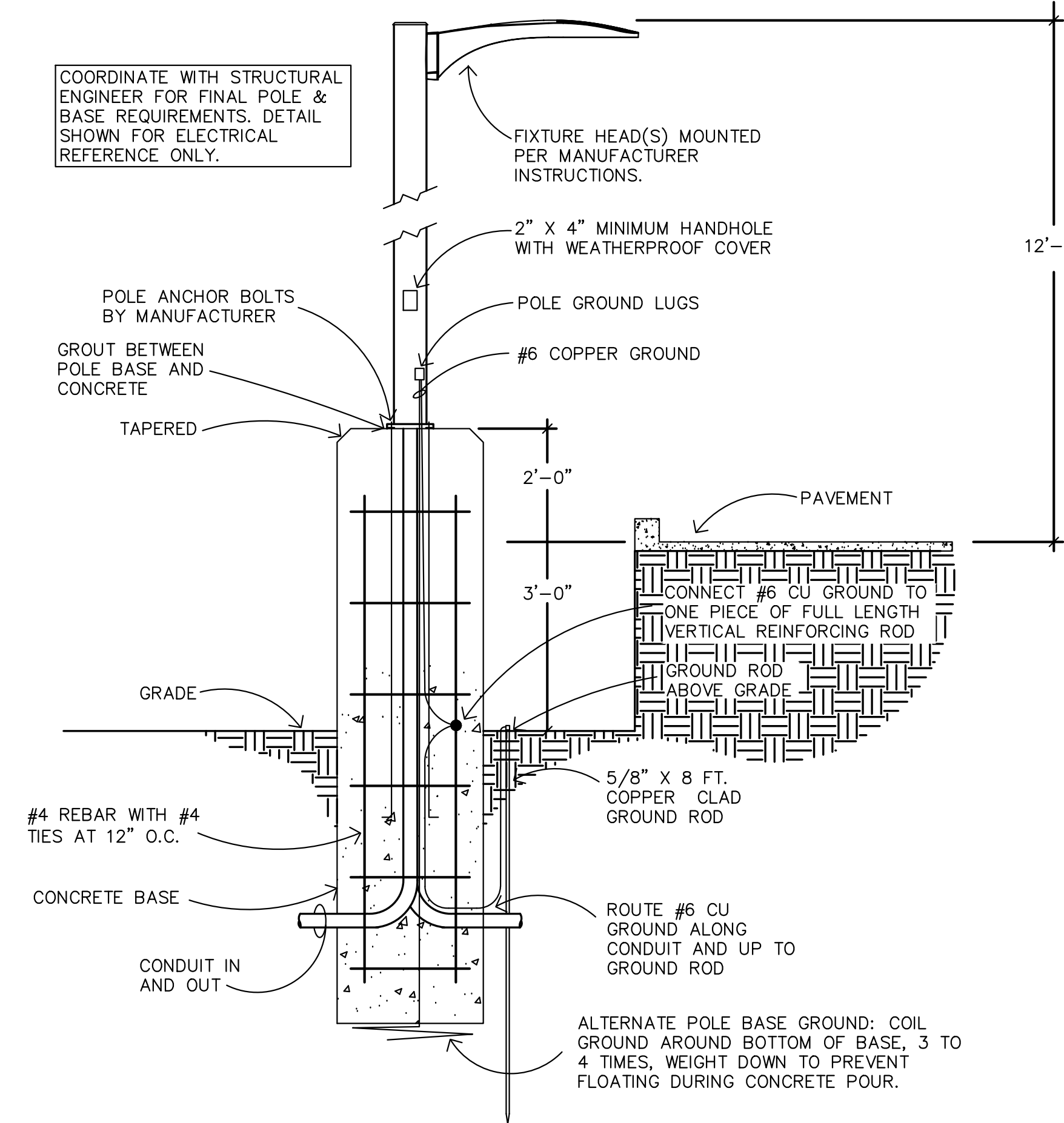
SHEET:
ES-2
2 OF 6

GENERAL NOTES:

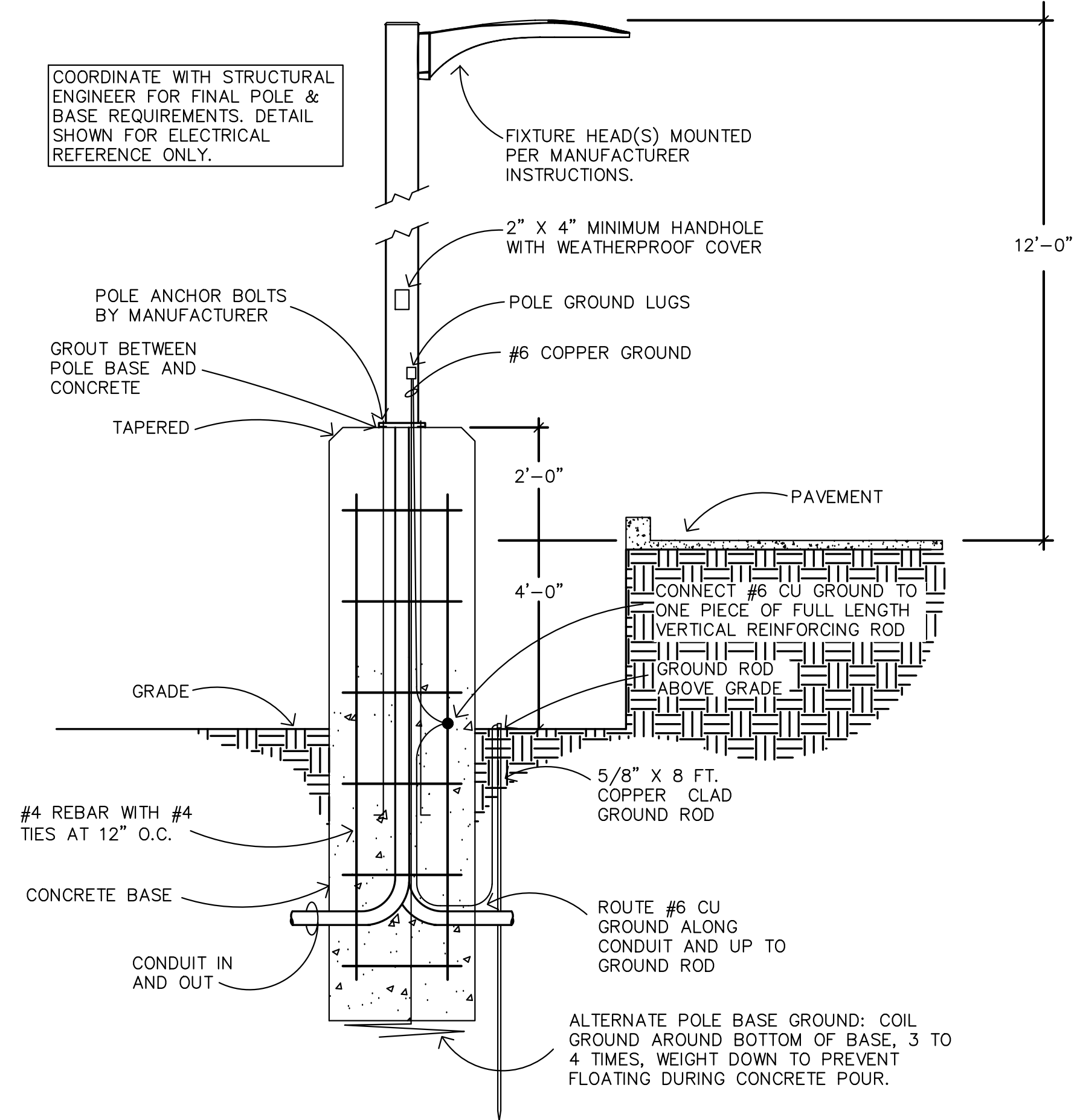
- ALL LIGHTING CONTROLS, FINISHES, ADDITIONAL OPTIONS, AND MOUNTING TYPES TO BE CONFIRMED/SELECTED BY ARCHITECT AND ENGINEER DESIGNING BUILDING ELECTRICAL SYSTEM.



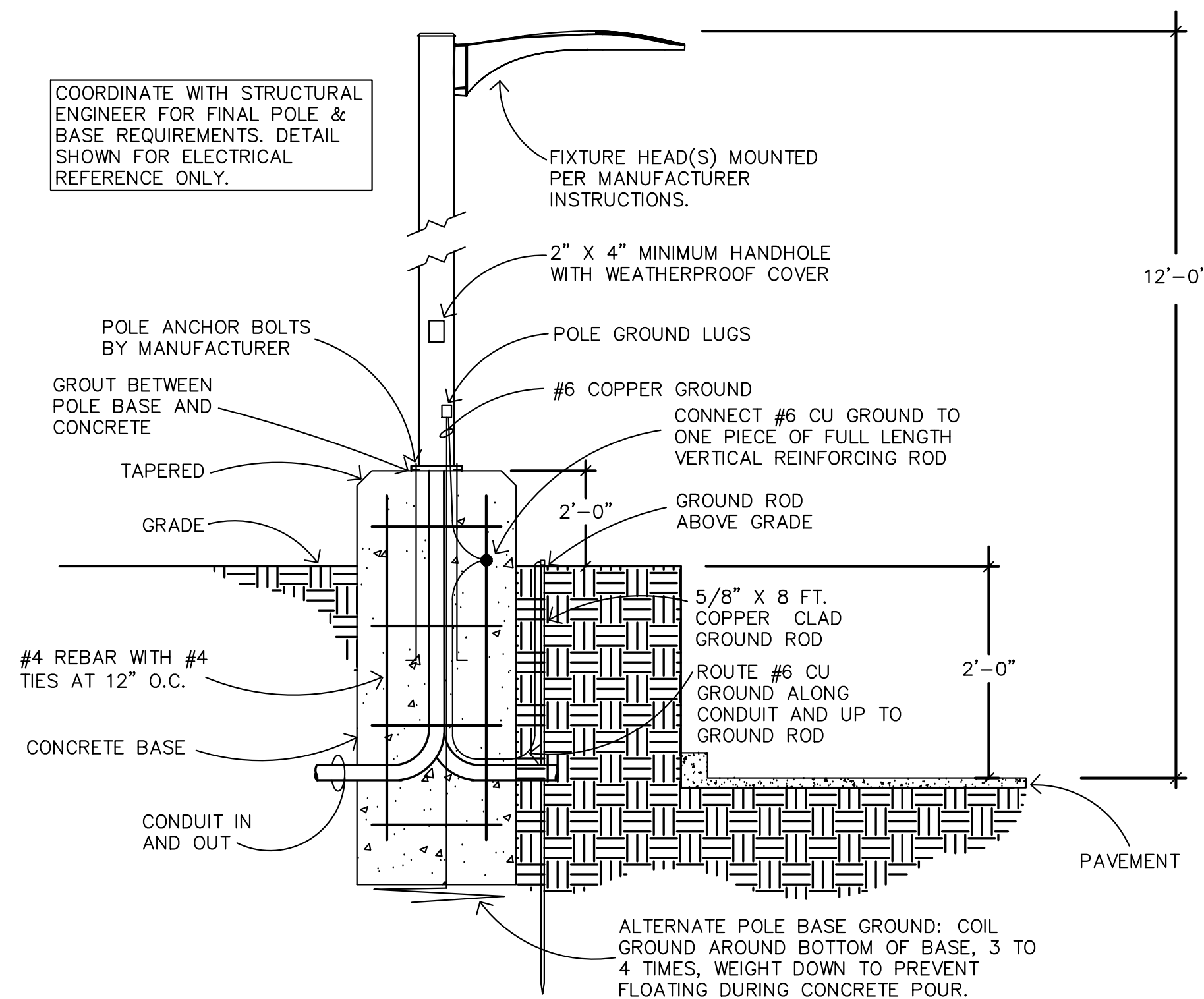
1 LIGHT POLE DETAIL - STANDARE BASE
SCALE: NONE



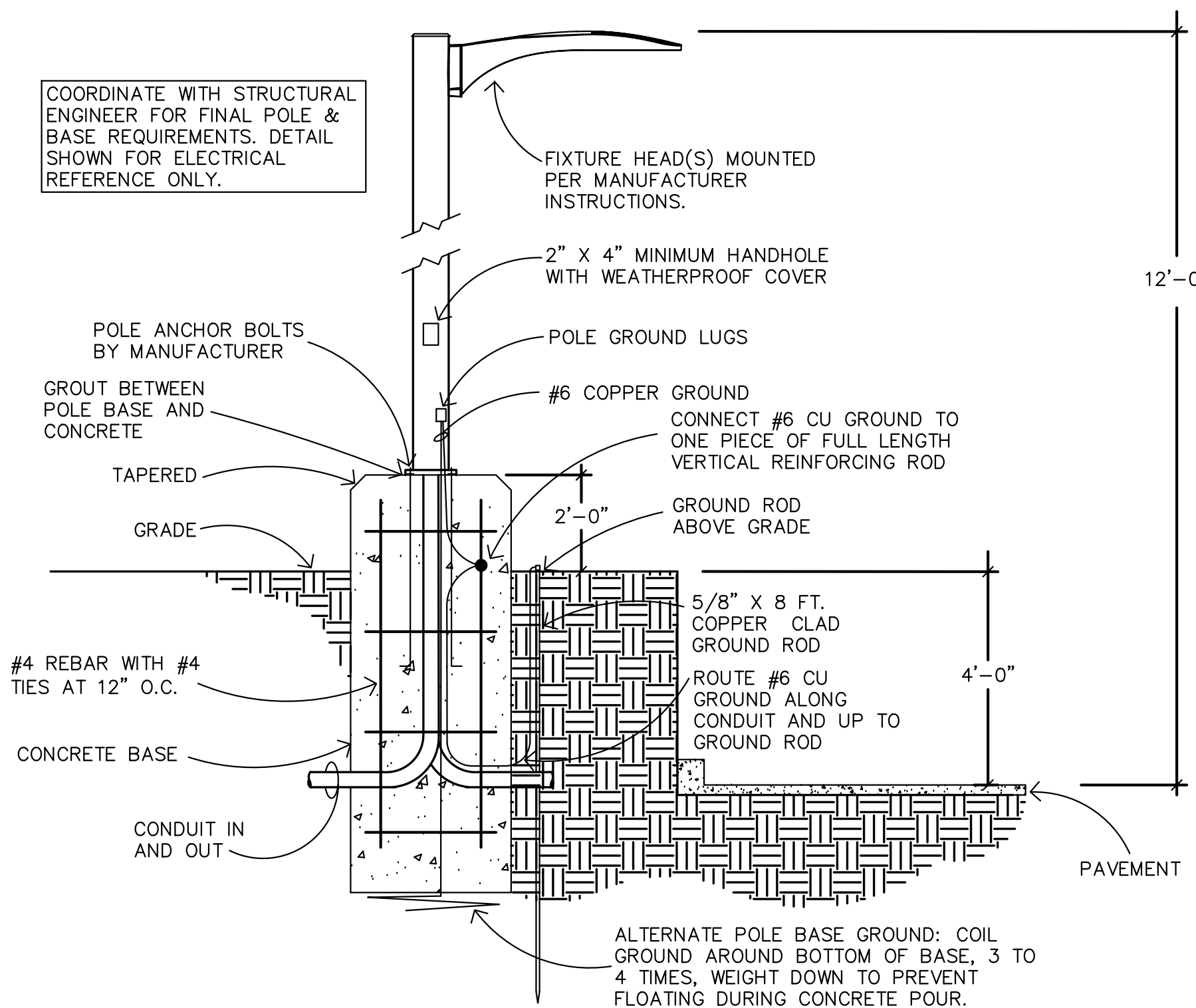
2 LIGHT POLE DETAIL - 3FT BELOW GRADE
SCALE: NONE



3 LIGHT POLE DETAIL - 4FT BELOW GRADE
SCALE: NONE



4 LIGHT POLE DETAIL - 2FT ABOVE GRADE
SCALE: NONE



5 LIGHT POLE DETAIL - 4FT ABOVE GRADE
SCALE: NONE

REVISIONS	
DATE	FOR

NOT FOR CONSTRUCTION

TDG Architecture
201 East Las Animas, Suite 113
Colorado Springs, CO 80903
719.623.5641 (Phone)
719.623.5643 (Fax)

Bowman
323 3RD AVENUE #100
LONGMONT, CO 80501
TEL: 303.678.1108
BOWMAN.COM

Fox Run Nature Center
Fox Run Regional Park
2110 Stella Drive
Colorado Springs, CO 80921

PHOTOMETRIC
SITE PLAN - POLE
BASE DETAILS

DATE: 10/21/24
DRAWN BY: CW/WP
CHECKED BY: AP/WN
PROJECT NO.: 230326

SHEET:
ES-3
3 OF 6

TYPE: J

HYDREL

ORD. NO. _____
 MODEL _____
 TYPE _____

HSL13
 Static White and Static Color
 Step Light 13

HIGHLIGHTS

- Integral Driver
- Long throw distribution
- Standard 0-10V dimming option
- Die-cast housing with solid aluminum, brass, or stainless steel faceplate
- Wet location listed
- Back Box provided by Hydrel or by others
- Suitable for concrete pour if BB option is chosen or Steel City back box is used

5 YEAR WARRANTY

LED

BAA

BAA

DIMENSIONS

12INCH

Expected fasteners for Wet Location Only
 Ribbed design with metal back from reduce glare

CROSS SECTION

Steel City HSD or equivalent (88mm x 110mm)

9INCH

Expected fasteners for Wet Location Only
 Ribbed design with metal back from reduce glare

CROSS SECTION

Steel City HSD or equivalent (88mm x 110mm)

6INCH

Expected fasteners for Wet Location Only
 Ribbed design with metal back from reduce glare

CROSS SECTION

Steel City HSD or equivalent (88mm x 110mm)

3INCH

Expected fasteners for Wet Location Only
 Ribbed design with metal back from reduce glare

CROSS SECTION

Steel City 7171

LUMEN PACKAGES

Distribution	Delivered Lumens	Input Watts	Lumens/Watt
3INCH	87	3	29
6INCH	174	5	35
9INCH	259	8	32
12INCH	344	11	31

Performance data based upon 30K LED @6000K

© 2013-2024 Acuity Brands Lighting, Inc. • One Lithonia Way, Conyers GA 30012
 Phone: 800-705-SERV (7378) • www.hydrel.com

HSL13 | Rev. 07/01/24
 Page 1 of 4

TYPE: J

HYDREL

HSL13 STEP LIGHT | 2

ORDERING INFORMATION

EXAMPLE: HSL13 3INCH LED 27K MVOLT L MINS BRB

Series*	Length*	Source*	Color Temperature*	Voltage*	Distribution*
HSL13 Step Light 13	3INCH	LED	27K 2700K	MVOLT	Multi-Volt 120V/277V L Long Throw
	6INCH	LED	30K 3000K		
	9INCH	LED	35K 3500K		
	12INCH	LED	40K 4000K		
		LED	50K 5000K		
		LED	60K 6000K		
		LED	70K 7000K		
		LED	80K 8000K		
		LED	90K 9000K		
		LED	100K 10000K		

Dimming Options

BB Back Box
BBP Back Box Paint
BBPS Back Box Paint Smooth
PBR Polished Brass
PS Polished Stainless Steel
SSB Semi Gloss Black
SW Semi Gloss White
CF Custom Finish
RALTRD RAL Paint Finishes

Note: RALTRD for pricing only, replace with applicable RAL call out when help to order. See the DALI/0-10V/0-1% for available options. It is recommended that Hydrel products only use secured paint.

Note: * is a required field

PERFORMANCE DATA

Typical Distribution Based on 30K CCT @ 6000K
 Typical Distribution Based on 30K CCT @ 7000K
 Typical Distribution Based on 30K CCT @ 8000K
 Typical Distribution Based on 30K CCT @ 9000K

Expected Life: Static White LED: L70 @ 60,000 hours
 Static Color LED: L70 @ 60,000 hours

Lumen Multiplier Table for CCT

CCT	Multiplier
27K	0.76
30K	1.00
35K	1.21
40K	1.53
50K	1.35
60K	0.90
70K	0.72
80K	0.64

© 2013-2024 Acuity Brands Lighting, Inc. • One Lithonia Way, Conyers GA 30012
 Phone: 800-705-SERV (7378) • www.hydrel.com

HSL13 | Rev. 07/01/24
 Page 2 of 4

TYPE: L

LIGMAN

GINO 3 (GI-31601)

Outdoor | Surface facade luminaires | GINO

Technical Information

Material: Aluminum
Light source: 2 & 2 COB
Power: 16 W
Lumen: 1044 - 1128 lm
Efficiency: 65 - 71 lm/W
Driver option: Integral control gear
Driver: Constant current (CC)
Input voltage: 220-240 V 50/60 Hz
Optic: 0

Optic value: 94°
Optic (2nd): 0
Optic (3rd) value: 94°
CCT / CRI: 3000K CR80, 4000K CR80
Flag: 80x14-60
ULB: 52%
ULOR: 50%
CIE flux code #13: 98
Dimming type: On/Off, 1-10V, DALI

Product colours: Black, Dark Grey, White, Matt Silver, Bronze, Concrete, Urban, Softstone, Urban Stone, Urban, Carbon, Urban, Oak, Woodland, Walnut, Woodland, Pine, Woodland

Weight: 1.8 kg
Operating Temperature: -20°C to 40°C
Through wiring Lens / Reflector / Optic: Frosted toughened glass
MacAdam Ellipse Lifetime L90/B10 (hours): 3 SDCM > 50,000

Compatible with EN IEC 60598-2-22. Suitable for emergency installations as central supply, non-maintained (20)

Accessories:

Surface mounting box for easy cabling (GINO 3-COB)
 SCE-GINO-3-COB

DALI Control System
 Control-DALI

© 2013-2024 Acuity Brands Lighting, Inc. • One Lithonia Way, Conyers GA 30012
 Phone: 800-705-SERV (7378) • www.hydrel.com

HSL13 | Rev. 07/01/24
 Page 2 of 4

TYPE: L

LIGMAN

GINO 3 (GI-31601)

Outdoor | Surface facade luminaires | GINO

Technical Information

Material: Aluminum
Light source: 2 & 2 COB
Power: 16 W
Lumen: 1044 - 1128 lm
Efficiency: 65 - 71 lm/W
Driver option: Integral control gear
Driver: Constant current (CC)
Input voltage: 220-240 V 50/60 Hz
Optic: 0

Optic value: 94°
Optic (2nd): 0
Optic (3rd) value: 94°
CCT / CRI: 3000K CR80, 4000K CR80
Flag: 80x14-60
ULB: 52%
ULOR: 50%
CIE flux code #13: 98
Dimming type: On/Off, 1-10V, DALI

Product colours: Black, Dark Grey, White, Matt Silver, Bronze, Concrete, Urban, Softstone, Urban Stone, Urban, Carbon, Urban, Oak, Woodland, Walnut, Woodland, Pine, Woodland

Weight: 1.8 kg
Operating Temperature: -20°C to 40°C
Through wiring Lens / Reflector / Optic: Frosted toughened glass
MacAdam Ellipse Lifetime L90/B10 (hours): 3 SDCM > 50,000

Compatible with EN IEC 60598-2-22. Suitable for emergency installations as central supply, non-maintained (20)

Accessories:

Surface mounting box for easy cabling (GINO 3-COB)
 SCE-GINO-3-COB

DALI Control System
 Control-DALI

© 2013-2024 Acuity Brands Lighting, Inc. • One Lithonia Way, Conyers GA 30012
 Phone: 800-705-SERV (7378) • www.hydrel.com

HSL13 | Rev. 07/01/24
 Page 2 of 4

TYPE: M

TESLYTE

HR-TD Series

Square Handrail Luminaire

Project: _____
 Location: _____
 Catalog #: _____ Quantity: _____

Features

- Crafted specifically for square railing, the Teslyte HR-TD square handrail luminaire offers seamless integration and exceptional illumination for stairways. Ideal for a range of environments, including residential and commercial settings like hospitals, movie theaters, public parks, and apartment complexes, this luminaire prioritizes both safety and aesthetics with its discreet yet powerful design.
- Power system: Flexibility to utilize either a remote transformer or a solar power hybrid system for enhanced adaptability and efficiency
- Lens: Symmetrical or Asymmetrical options or wide beam
- Housing: Aluminum or stainless-steel options
- LEDs: Highly efficient integral LED
- Applications: Square railing for use in interior or exterior commercial and residential applications
- Ratings: Suitable for wet locations, IP65
- Warranty: 5-year warranty.

Ordering Information

Product code	Voltage	Distribution	Wattage	CCT (K)	Type	Option
HR-TD01	DCxx					

xx= 12- 12Vdc
 S- Symmetrical
 W- Wide beam
 2W- 2W (160lm)
 30- 3000K
 40- 4000K
 SQAL-Square Aluminum
 SQSS-Square Stainless steel
 RD- Remoted Transformer
 SP- Solar Power Hybrid System

Note: Fixtures must be grounded in accordance with national, state, and/or local electrical codes. Failure to do so may result in serious personal injury.

Remoted Drivers Ordering Part Number

Transformer Wattage	12V DC OP/120AC	12V DC OP/277AC	24V DC OP/120AC	24V DC OP/277AC
20W (8 packs per transformer)	SEB12DC-20W-3R	SEB12DC-20W-3R-277		
24W (8 packs per transformer)			SEB24DC-24W-3R	SEB24DC-24W-3R-277
40W (18 packs per transformer)	SEB12DC-40W-3R	SEB12DC-40W-3R-277	SEB24DC-40W-3R	SEB24DC-40W-3R-277
60W (25 packs per transformer)	SEB12DC-60W-3R	SEB12DC-60W-3R-277	SEB24DC-60W-3R	SEB24DC-60W-3R-277
96W (45 packs per transformer)	SEB12DC-96W-3R	SEB12DC-96W-3R-277	SEB24DC-96W-3R	SEB24DC-96W-3R-277

Note: (1) Transformer dimensions: 8.5" x 3.5" x 3"
 (2) 96W 12Vdc is dual output and requires two separated wiring pairs in the handrail.
 (3) Ideal spacing for 2-foot fixtures

Teslyte LLC 155 East Liberty Ave. Unit G/H, Anaheim, CA 92801 USA, Toll-Free (888) 394-2299
 Teslyte reserves the right to change product specifications without notice. www.teslyte.com

TYPE: M

TESLYTE

HR-TD Series

Mechanical Dimensions

Teslyte LLC 155 East Liberty Ave. Unit G/H, Anaheim, CA 92801 USA, Toll-Free (888) 394-2299
 Teslyte reserves the right to change product specifications without notice. www.teslyte.com

REVISIONS	
DATE	FOR

NOT FOR CONSTRUCTION

TDG Architecture

201 East Las Animas, Suite 113
 Colorado Springs, CO 80903
 719.623.5641 (Phone)
 719.623.5643 (Fax)

Bowman

BOWMAN.COM
 323 BRD AVENUE #100
 LONGMONT, CO 80501
 TEL: 1.303.678.1108

Fox Run Nature Center

Fox Run Regional Park
 2110 Stella Drive
 Colorado Springs, CO 80921

PHOTOMETRIC
 SITE PLAN -
 CUTSHEETS

DATE: 10/21/24
 DRAWN BY: CW/AP
 CHECKED BY: AP/WN
 PROJECT NO.: 230326
 SHEET:
ES-5
 5 OF 6

TYPE: SP3H, SP4H, SPFH

D-Series Size 0 LED Area Luminaire

Specifications

EPA: 0.44 ft² (0.04 m²)

Length: 26.18" (66.94 cm)

Width: 14.06" (35.70 cm)

Height H1: 2.26" (5.74 cm)

Height H2: 7.48" (19.00 cm)

Weight: 23 lbs (10.4 kg)

Ordering Information

EXAMPLE: DSX0 LED P6 40K 70CRI T3M MVOLT SPA NLAIR2 PIRH-N DOBX0

Series	LEDs	Color Temperature	Color Rendering Index	Distribution	Mounting	Voltage
DSX0 LED	Forward optics	30K, 3500K, 40K	90, 95, 98	MA, MA, MA	MA, MA, MA	120V, 277V
	PI P5	30K, 3500K, 40K	90, 95, 98	MA, MA, MA	MA, MA, MA	120V, 277V
	PI P6	30K, 3500K, 40K	90, 95, 98	MA, MA, MA	MA, MA, MA	120V, 277V

Accessories

- External Glare Shield (EGSR)
- House Side Shield (HS)

Drilling

HANDLE ORIENTATION (From top of pole)

DSX0 LED Area Luminaire - EPA

Mounting Type	MA	MA	MA	MA	MA	MA
MA	4.0	4.0	4.0	4.0	4.0	4.0
MA	4.0	4.0	4.0	4.0	4.0	4.0

TYPE: SP3H, SP4H, SPFH

Ordering Information

Accessories

- External Glare Shield (EGSR)
- House Side Shield (HS)

Drilling

HANDLE ORIENTATION (From top of pole)

Tenon Mounting Splitter

Series	MA	MA	MA	MA	MA	MA
MA	4.0	4.0	4.0	4.0	4.0	4.0
MA	4.0	4.0	4.0	4.0	4.0	4.0

DSX0 LED Area Luminaire - EPA

Mounting Type	MA	MA	MA	MA	MA	MA
MA	4.0	4.0	4.0	4.0	4.0	4.0
MA	4.0	4.0	4.0	4.0	4.0	4.0

TYPE: SP3H, SP4H, SPFH

Photometric Diagrams

To see complete photometric reports or download .IES files for this product, visit Lithonia Lighting's homepage.

Performance Data

Lumen Ambient Temperature (LAT) Multipliers

Temp (°C)	Multiplier
0	1.00
5	0.98
10	0.96
15	0.94
20	0.92
25	0.90
30	0.88
35	0.86
40	0.84
45	0.82
50	0.80
55	0.78
60	0.76
65	0.74
70	0.72
75	0.70
80	0.68
85	0.66
90	0.64
95	0.62
100	0.60

Projected LED Lumen Maintenance

Hours	Percentage
1000	95%
2000	90%
3000	85%
4000	80%
5000	75%
6000	70%
7000	65%
8000	60%
9000	55%
10000	50%

FAO Dimming Settings

FAO Level	Dimming %
1	100%
2	90%
3	80%
4	70%
5	60%
6	50%
7	40%
8	30%
9	20%
10	10%

Motion Sensor Default Settings

Setting	Value
Light Level	100%
Photoeye	Enabled @ 2°C
Beam Time	7.5 min
Temp. Rise	3 sec
Dimming	5 min

Controls Options

Option	Description	Availability	Notes
MA	Fixed adjustable output driver installed inside the luminaire, wired to the driver wiring panel.	Standard	Cannot be used with other controls options that need the 0-10V input.
PI	Independent dimming by 0-10V signal.	Standard	Requires a separate dimming circuit. Consider slight delay for 0-10V operation.
PIR	Passive infrared motion sensor.	Standard	Compatible with standard lock-up protocols for dusk-to-dawn operation or ambient control modes. See page 10 for dimming options.
PIR	Medium range with integral photocell. Sensor visible by 1' to 40' depending on light.	Standard	Luminaires dim when occupancy is detected.
NLAIR2 PIRH	Light 48' ambient sensor in motion sensing, photoeye and motion sensor.	Standard	Light 48' sensor can be programmed and commissioned from the front using the 0-10V input. Cannot be used with other controls options that need the 0-10V input.
BLR to BL30	Integrated level device that allows a second control circuit to dim luminaire to either 10% or 50% of rated light output.	Standard	BL30 sensor is powered off the 0-10V dimming signal. BL30 sensor is powered off the 0-10V dimming signal.

TYPE: SP3H, SP4H, SPFH

Performance Data

Lumen Ambient Temperature (LAT) Multipliers

Temp (°C)	Multiplier
0	1.00
5	0.98
10	0.96
15	0.94
20	0.92
25	0.90
30	0.88
35	0.86
40	0.84
45	0.82
50	0.80
55	0.78
60	0.76
65	0.74
70	0.72
75	0.70
80	0.68
85	0.66
90	0.64
95	0.62
100	0.60

Projected LED Lumen Maintenance

Hours	Percentage
1000	95%
2000	90%
3000	85%
4000	80%
5000	75%
6000	70%
7000	65%
8000	60%
9000	55%
10000	50%

FAO Dimming Settings

FAO Level	Dimming %
1	100%
2	90%
3	80%
4	70%
5	60%
6	50%
7	40%
8	30%
9	20%
10	10%

Motion Sensor Default Settings

Setting	Value
Light Level	100%
Photoeye	Enabled @ 2°C
Beam Time	7.5 min
Temp. Rise	3 sec
Dimming	5 min

Controls Options

Option	Description	Availability	Notes
MA	Fixed adjustable output driver installed inside the luminaire, wired to the driver wiring panel.	Standard	Cannot be used with other controls options that need the 0-10V input.
PI	Independent dimming by 0-10V signal.	Standard	Requires a separate dimming circuit. Consider slight delay for 0-10V operation.
PIR	Passive infrared motion sensor.	Standard	Compatible with standard lock-up protocols for dusk-to-dawn operation or ambient control modes. See page 10 for dimming options.
PIR	Medium range with integral photocell. Sensor visible by 1' to 40' depending on light.	Standard	Luminaires dim when occupancy is detected.
NLAIR2 PIRH	Light 48' ambient sensor in motion sensing, photoeye and motion sensor.	Standard	Light 48' sensor can be programmed and commissioned from the front using the 0-10V input. Cannot be used with other controls options that need the 0-10V input.
BLR to BL30	Integrated level device that allows a second control circuit to dim luminaire to either 10% or 50% of rated light output.	Standard	BL30 sensor is powered off the 0-10V dimming signal. BL30 sensor is powered off the 0-10V dimming signal.

TYPE: SP3H, SP4H, SPFH

Performance Data

Lumen Output

Series	Options	LED Count	Beam Spread	Beam Angle	Beam Diameter	Beam Length	Beam Area	Beam Volume
P1	3W	20	530	MA	1.0	1.0	1.0	1.0
				MA	1.0	1.0	1.0	1.0
				MA	1.0	1.0	1.0	1.0
				MA	1.0	1.0	1.0	1.0
				MA	1.0	1.0	1.0	1.0
				MA	1.0	1.0	1.0	1.0
				MA	1.0	1.0	1.0	1.0
				MA	1.0	1.0	1.0	1.0
				MA	1.0	1.0	1.0	1.0
				MA	1.0	1.0	1.0	1.0
				MA	1.0	1.0	1.0	1.0
				MA	1.0	1.0	1.0	1.0
P2	4W	20	700	MA	1.0	1.0	1.0	1.0
				MA	1.0	1.0	1.0	1.0
				MA	1.0	1.0	1.0	1.0
				MA	1.0	1.0	1.0	1.0
				MA	1.0	1.0	1.0	1.0
				MA	1.0	1.0	1.0	1.0
				MA	1.0	1.0	1.0	1.0
				MA	1.0	1.0	1.0	1.0
				MA	1.0	1.0	1.0	1.0
				MA	1.0	1.0	1.0	1.0
				MA	1.0	1.0	1.0	1.0
				MA	1.0	1.0	1.0	1.0
P3	6W	20	1000	MA	1.0	1.0	1.0	1.0
				MA	1.0	1.0	1.0	1.0
				MA	1.0	1.0	1.0	1.0
				MA	1.0	1.0	1.0	1.0
				MA	1.0	1.0	1.0	1.0
				MA	1.0	1.0	1.0	1.0
				MA	1.0	1.0	1.0	1.0
				MA	1.0	1.0	1.0	1.0
				MA	1.0	1.0	1.0	1.0
				MA	1.0	1.0	1.0	1.0
				MA	1.0	1.0	1.0	1.0
				MA	1.0	1.0	1.0	1.0
P4	9W	20	1400	MA	1.0	1.0	1.0	1.0
				MA	1.0	1.0	1.0	1.0
				MA	1.0	1.0	1.0	1.0
				MA	1.0	1.0	1.0	1.0
				MA	1.0	1.0	1.0	1.0
				MA	1.0	1.0	1.0	1.0
				MA	1.0	1.0	1.0	1.0
				MA	1.0	1.0	1.0	1.0
				MA	1.0	1.0	1.0	1.0
				MA	1.0	1.0	1.0	1.0
				MA	1.0	1.0	1.0	1.0
				MA	1.0	1.0	1.0	1.0

Dimensions

Ordering Information

Accessories

- External Glare Shield (EGSR)
- House Side Shield (HS)

Drilling

HANDLE ORIENTATION (From top of pole)

Tenon Mounting Splitter

Series	MA	MA	MA	MA	MA	MA
MA	4.0	4.0	4.0	4.0	4.0	4.0
MA	4.0	4.0	4.0	4.0	4.0	4.0

DSX0 LED Area Luminaire - EPA

Mounting Type	MA	MA	MA	MA	MA	MA
MA	4.0	4.0	4.0	4.0	4.0	4.0
MA	4.0	4.0	4.0	4.0	4.0	4.0

TYPE: SP3H, SP4H, SPFH

Performance Data

Lumen Output

Series	Options	LED Count	Beam Spread	Beam Angle	Beam Diameter	Beam Length	Beam Area	Beam Volume
P1	3W	20	530	MA	1.0	1.0	1.0	1.0
				MA	1.0	1.0	1.0	1.0
				MA	1.0	1.0	1.0	1.0
				MA	1.0	1.0	1.0	1.0
				MA	1.0	1.0	1.0	1.0
				MA	1.0	1.0	1.0	1.0
				MA	1.0	1.0	1.0	1.0
				MA	1.0	1.0	1.0	1.0
				MA	1.0	1.0	1.0	1.0
				MA	1.0	1.0	1.0	1.0
				MA	1.0	1.0	1.0	1.0
				MA	1.0	1.0	1.0	1.0
P2	4W	20	700	MA	1.0	1.0	1.0	1.0
				MA	1.0	1.0	1.0	1.0
				MA	1.0	1.0	1.0	1.0
				MA	1.0	1.0	1.0	1.0
				MA	1.0	1.0	1.0	1.0
				MA	1.0	1.0	1.0	1.0
				MA	1.0	1.0	1.0	1.0
				MA	1.0	1.0	1.0	1.0
				MA	1.0	1.0	1.0	1.0
				MA	1.0	1.0	1.0	1.0
				MA	1.0	1.0	1.0	1.0
				MA	1.0	1.0	1.0	1.0
P3	6W	20	1000	MA	1.0	1.0	1.0	1.0
				MA	1.0	1.0	1.0	1.0
				MA	1.0	1.0	1.0	1.0
				MA	1.0	1.0	1.0	1.0
				MA	1.0	1.0	1.0	1.0
				MA	1.0	1.0	1.0	1.0
				MA	1.0	1.0	1.0	1.0
				MA	1.0	1.0	1.0	1.0
				MA	1.0	1.0	1.0	1.0
				MA	1.0	1.0	1.0	1.0
				MA	1.0	1.0	1.0	1.0
				MA	1.0	1.0	1.0	1.0
P4	9W	20	1400	MA	1.0	1.0	1.0	1.0
				MA	1.0	1.0	1.0	1.0
				MA	1.0	1.0	1.0	1.0
				MA	1.0	1.0	1.0	1.0
				MA	1.0	1.0	1.0	1.0
				MA	1.0	1.0	1.0	1.0
				MA	1.0	1.0	1.0	1.0
				MA	1.0	1.0	1.0	1.0
				MA	1.0	1.0	1.0	1.0
				MA	1.0	1.0	1.0	1.0
				MA	1.0	1.0	1.0	1.0
				MA	1.0	1.0	1.0	1.0

Dimensions

Ordering Information

Accessories

- External Glare Shield (EGSR)
- House Side Shield (HS)

Drilling

HANDLE ORIENTATION (From top of pole)

Tenon Mounting Splitter

Series	MA	MA	MA	MA	MA	MA
MA	4.0	4.0	4.0	4.0	4.0	4.0
MA	4.0	4.0	4.0	4.0	4.0	4.0

DSX0 LED Area Luminaire - EPA

Mounting Type	MA	MA	MA	MA	MA	MA
MA	4.0	4.0	4.0	4.0	4.0	4.0
MA	4.0	4.0	4.0	4.0	4.0	4.0

TYPE: SP3H, SP4H, SPFH

Photometric Diagrams

To see complete photometric reports or download .IES files for this product, visit Lithonia Lighting's homepage.

Performance Data

Lumen Ambient Temperature (LAT) Multipliers

Temp (°C)	Multiplier
0	1.00
5	0.98
10	0.96
15	0.94
20	0.92
25	0.90
30	0.88
35	0.86
40	0.84
45	0.82
50	0.80
55	0.78
60	0.76
65	0.74
70	0.72
75	0.70
80	0.68
85	0.66
90	0.64
95	0.62
100	0.60

Projected LED Lumen Maintenance

Hours	Percentage
1000	95%
2000	90%
3000	85%
4000	80%
5000	75%
6000	70%
7000	65%
8000	60%
9000	55%
10000	50%

FAO Dimming Settings

FAO Level	Dimming %
-----------	-----------