

### Client Approval

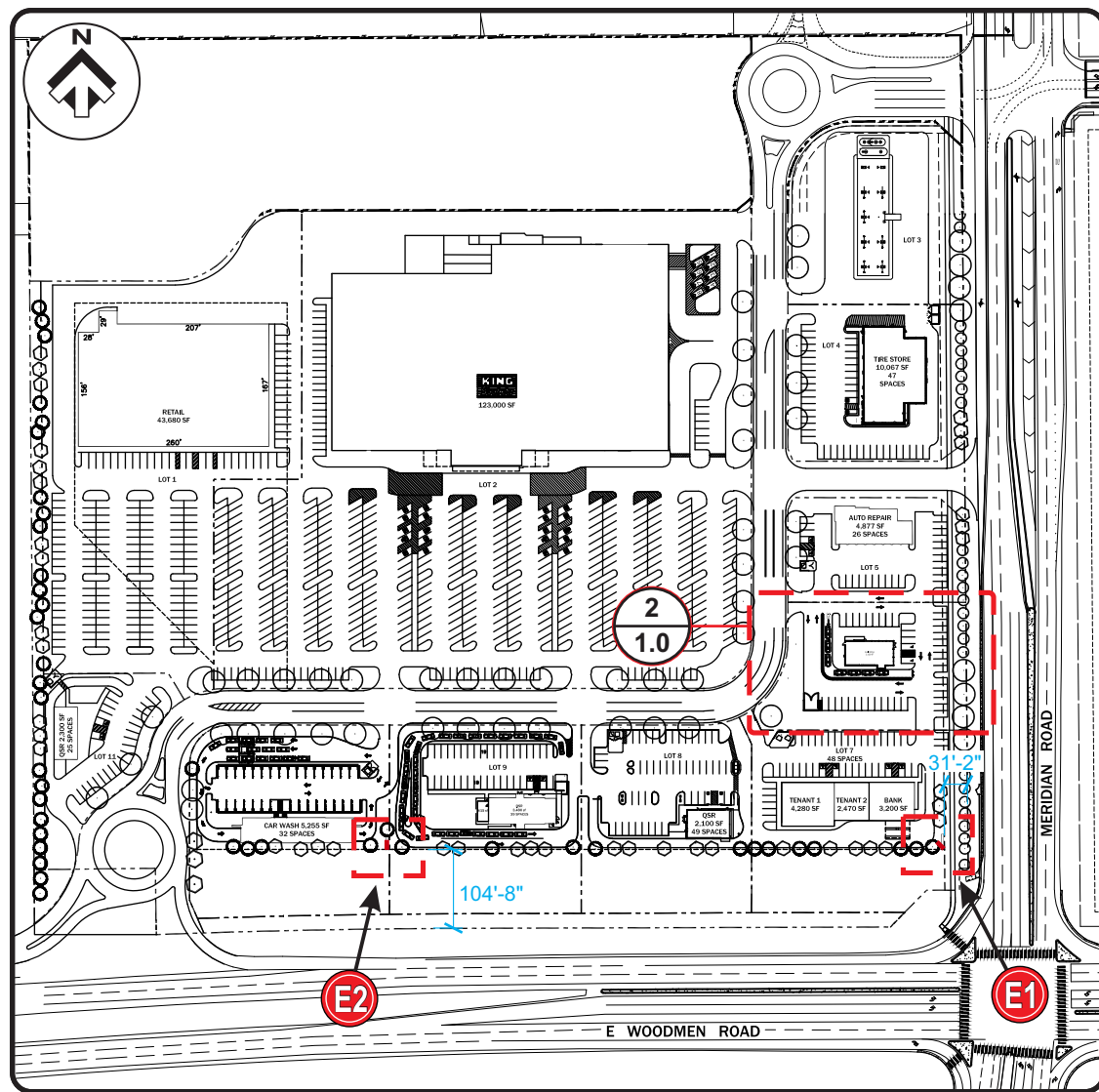
Signature \_\_\_\_\_  
Date \_\_\_\_\_  
**NOTE:** Please ensure all red line changes are noted on this drawing prior to returning it to ADCON. Subsequent to ADCON incorporating the red line changes requested on this drawing, any further changes will result in additional billing at the rate of \$86 per hour.

Approved  
 Approved As Noted  
 Revise And Resubmit

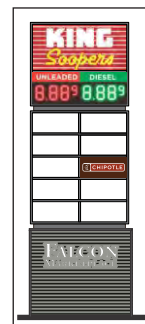
Production Mgr. Approval	Date
Project Mgr. Approval	Date
Account Mgr. Approval	Date
P&D Mgr. Approval	Date

Revision Notes:  
Setbacks added  
Existing Pylon notation added

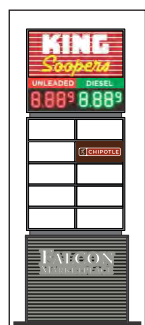
Quote No. \_\_\_\_\_  
W.O. No. **5030**  
Rev. No. **1** Date: 12-06-22  
By: CCL  
Sheet No. **1.0**



**1 SITE PLAN**  
1.0 SCALE: 1" = 250'-0"



**E1 S/F TENANT PANELS**  
D/F MULTI-TENANT PYLON  
Quantity (2)



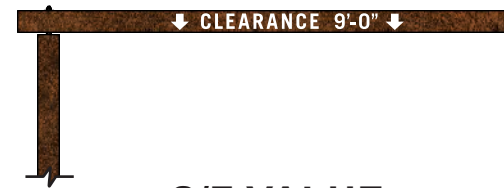
**E2 S/F TENANT PANELS**  
D/F MULTI-TENANT PYLON  
Quantity (2)

**ALL PYLONS EXISTING IN LOCATION. ADCON RESPONSIBLE FOR NEW PANELS ONLY**



**A BW3-22 S/F WALL SIGN**  
Quantity (3)

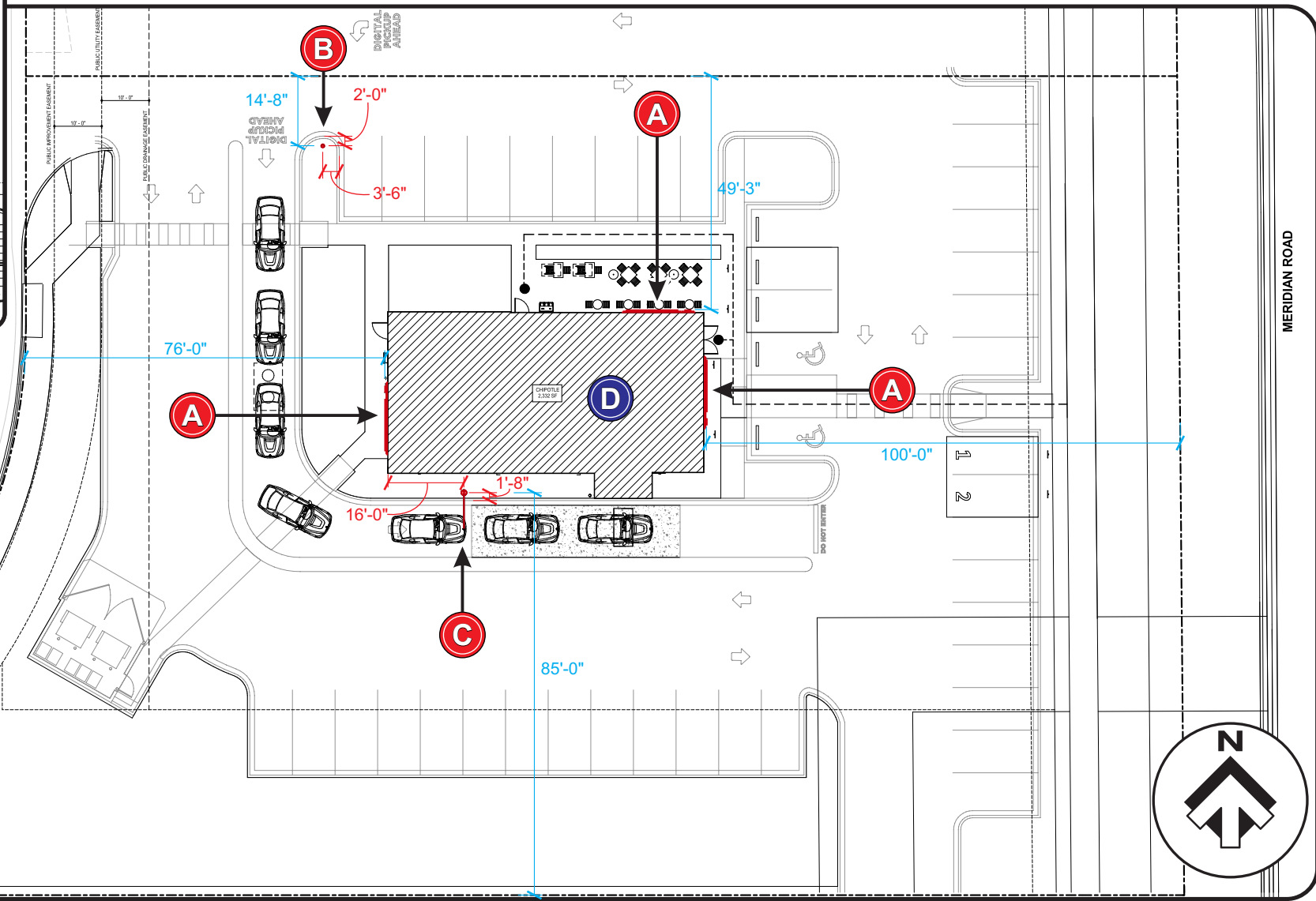
**B DIGITAL PICK-UP MINI D/F**  
Quantity (1)



**C S/F VALUE CLEARANCE BAR**  
Quantity (1)

**D INTERIOR PICK-UP DISC**  
S/F Flush Wall mounted  
Quantity (1)

**2 SITE PLAN - LOT DETAIL**  
1.0 SCALE: 1/32" = 1'-0"



**TOTAL ALLOWED SQ FT= 308.5 TOTAL SIGN FACE SQ FT= 187.5**

**Shop Drawing for:**  
**Chipotle Mexican Grill**  
**Falcon**  
Store # 4612  
7565 Falcon Market Place  
Falcon, CO 80831

Sign Type: \_\_\_\_\_ Multiple

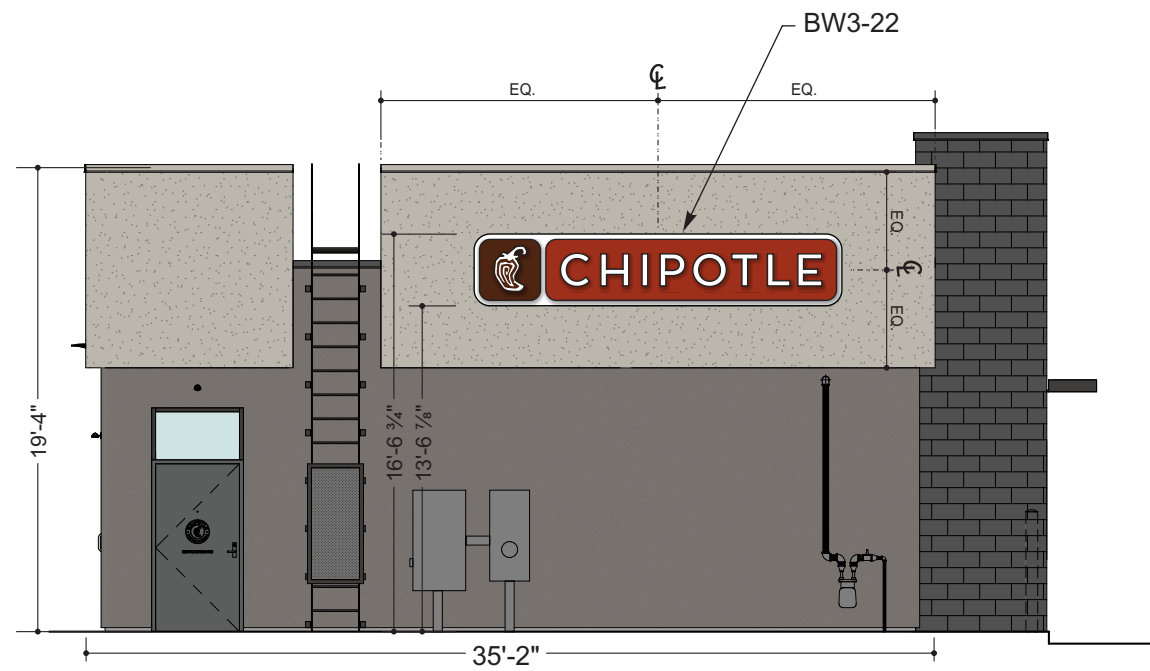
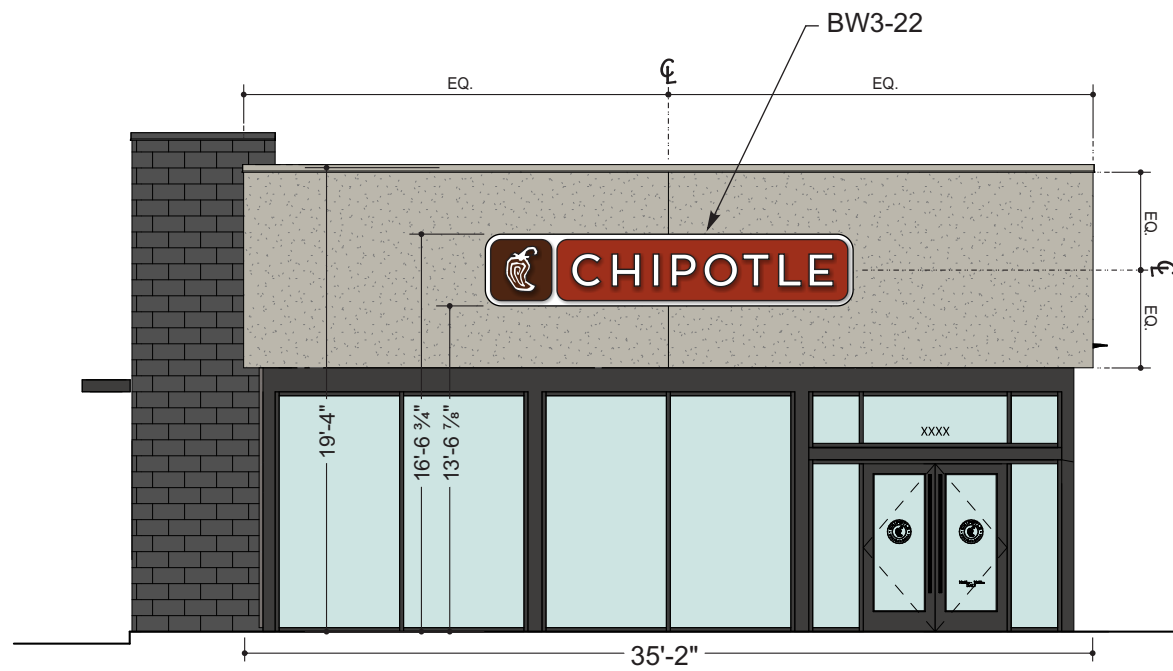
Date: \_\_\_\_\_ November 03, 2022

Drawn by: \_\_\_\_\_ Charles L.

Account Manager: \_\_\_\_\_ Kristi M.

Project Manager: \_\_\_\_\_ Cody R.

File Name: \_\_\_\_\_ Elevations

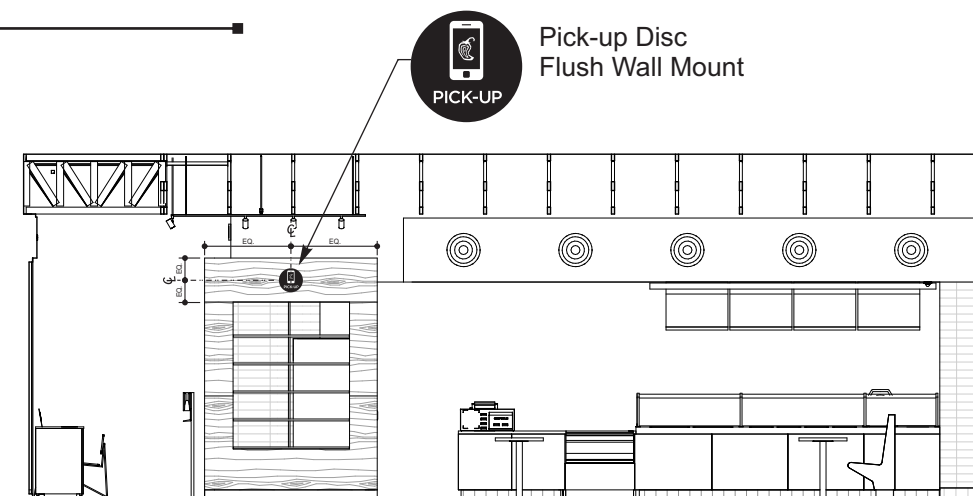


**1 EAST ELEVATION**  
**2.0 SCALE: 1/8"= 1'-0"**

**2 WEST ELEVATION**  
**2.0 SCALE: 1/8"= 1'-0"**



**3 NORTH ELEVATION**  
**2.0 SCALE: 1/8"= 1'-0"**



**4 INTERIOR ELEVATION**  
**2.0 SCALE: 1/8"= 1'-0"**

### Client Approval

Signature \_\_\_\_\_

Date \_\_\_\_\_

**NOTE:** Please ensure all red line changes are noted on this drawing prior to returning it to ADCON. Subsequent to ADCON incorporating the red line changes requested on this drawing, any further changes will result in additional billing at the rate of \$86 per hour.

- Approved
- Approved As Noted
- Revise And Resubmit

Production Mgr. Approval \_\_\_\_\_ Date \_\_\_\_\_

Project Mgr. Approval \_\_\_\_\_ Date \_\_\_\_\_

Account Mgr. Approval \_\_\_\_\_ Date \_\_\_\_\_

P&D Mgr. Approval \_\_\_\_\_ Date \_\_\_\_\_

### Revision Notes:

Shop Set

Quote No. \_\_\_\_\_

W.O. No. **5030**

Rev. No. **0**

Date: 11-30-22  
By: CCL

Sheet No. **2.0**

**Shop Drawing for:**  
**Chipotle Mexican Grill Falcon**  
Store # 4612  
7565 Falcon Market Place  
Falcon, CO 80831  
Sign Type: \_\_\_\_\_ BW3-22

Date: \_\_\_\_\_ November 03, 2022  
Drawn by: \_\_\_\_\_ Charles L.  
Account Manager: \_\_\_\_\_ Kristi M.  
Project Manager: \_\_\_\_\_ Cody R.  
File Name: \_\_\_\_\_ BW3-22

### Client Approval

Signature \_\_\_\_\_

Date \_\_\_\_\_

NOTE: Please ensure all red line changes are noted on this drawing prior to returning it to ADCON. Subsequent to ADCON incorporating the red line changes requested on this drawing, any further changes will result in additional billing at the rate of \$86 per hour.

- Approved  
 Approved As Noted  
 Revise And Resubmit

Production Mgr. Approval \_\_\_\_\_ Date \_\_\_\_\_

Project Mgr. Approval \_\_\_\_\_ Date \_\_\_\_\_

Account Mgr. Approval \_\_\_\_\_ Date \_\_\_\_\_

P&D Mgr. Approval \_\_\_\_\_ Date \_\_\_\_\_

### Revision Notes:

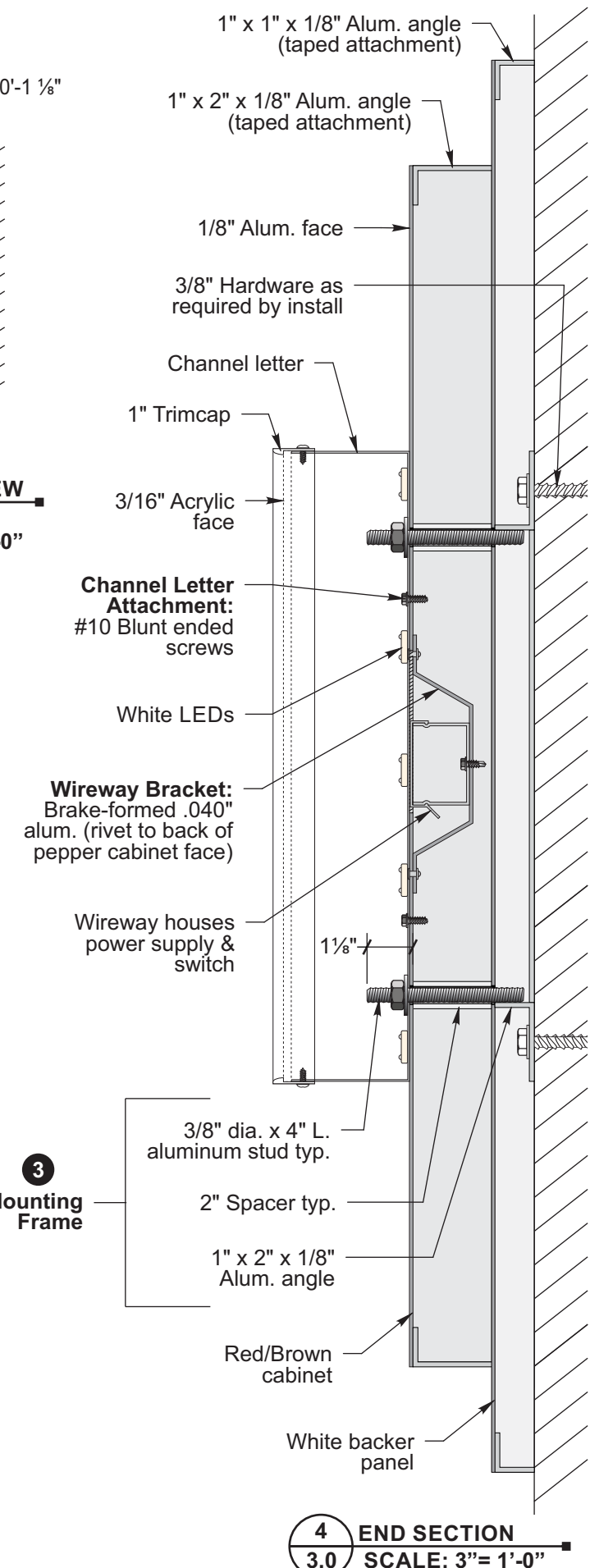
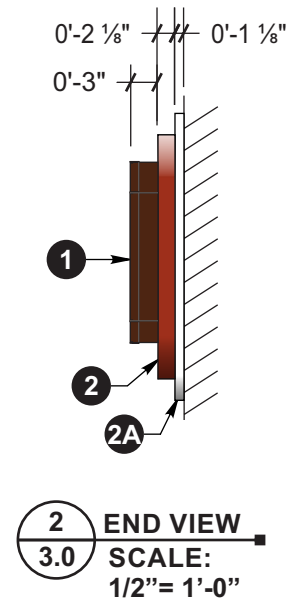
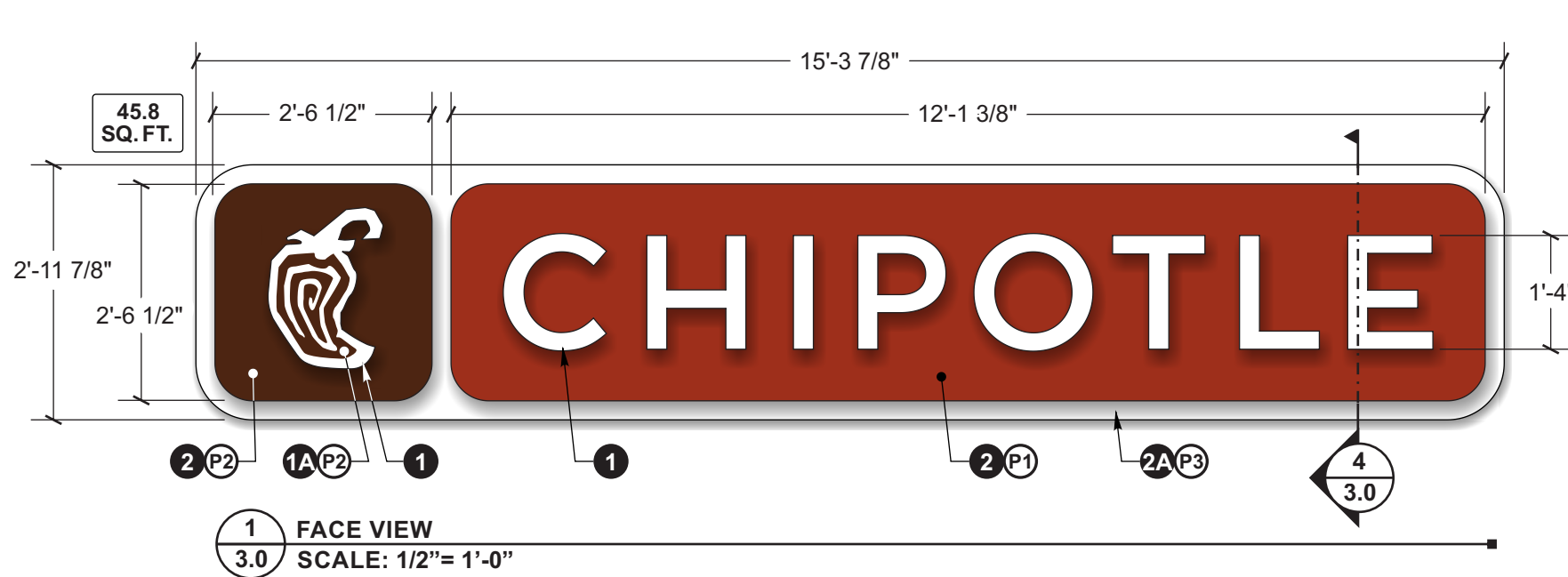
Shop Set

Dot No. **.2**

W.O. No. **5030**

Rev. No. **0** Date: 11-30-22  
By: CCL

Sheet No. **3.0**



### SIGN TYPE **BW3-22** SPECIFICATIONS FOR (3) ILLUMINATED WALL SIGN

#### 1 CHANNEL LETTERS "CHIPOTLE" AND PEPPER LOGO

- LETTER TYPE= Face-Lit pan channels DEPTH= 3"
- FACES= 3/16" Cyro #2447 Milk-White acrylic
- 1A PEPPER GRAPHIC= Stud mounted .063" Aluminum Flat-cut-out overlay
- TRIMCAP= 1" Brown Gemtrim
- BACKS= .040" Pre-finished white aluminum
- RETURNS= .040" Pre-finished Adobo Brown aluminum (w/ weep holes)
- ILLUMINATION= Principal LED "Qwik Mod 2" 7100K White LEDs
- MOUNTING= Mount flush to face of cabinets with #10 "blunt" ended screws as req.

#### 2 BROWN & RED CABINETS

- FACE= 1/8" Aluminum BACK= N/A
- RETURNS= Top & Bottom Straights: 1" x 2" x 1/8" Aluminum angle
- Attachment= 3/4" VHB tape
- Ends/corners: (one-piece) .063" Aluminum
- Attachment= Versilok adhesive
- NOTE: Use fishplates @ return seams as req.

#### 2A WHITE BACKER PANEL

- FACE= 1/8" Aluminum BACK= N/A
- RETURNS= Top & Bottom Straights: 1" x 1" x 1/8" Aluminum angle
- Attachment= 3/4" VHB tape
- Ends/corners: (one-piece) .063" Aluminum
- Attachment= Versilok adhesive
- NOTE: Use fishplates @ return seams as req.

#### 3 MOUNTING FRAME

- CONSTRUCTION= 1" x 2" x 1/8" Aluminum angle frame assembly w/ studs for thru-bolt attachment of sign components

#### INSTALL

- MOUNTING FRAME= Attach flush to fascia w/ 3/8" hardware as req.
- ASSEMBLY= 1. Slide White Backer panel over mounting frame studs
- 2. Place 2" Long spacers onto mounting frame studs
- 3. Slide Red & Brown cabinets over studs
- 4. Secure w/ nuts & washers

NOTE: Frame stud attachments are hidden inside of letters "C", "I", "O", "E", and pepper logo

#### ELECTRICAL

- POWER SUPPLY= 120V primary/12V secondary power supply housed inside wireway behind pepper channel logo
- POWER DISCONNECT= Toggle switch on end of brown pepper cabinet
- ELECTRICAL LEADS= 120V: Provide (1) 6'-0" pigtail in sealite conduit
- 12V: Provide (2) 6'-0" pigtails
- NOTE: 12V leads between Red and Brown cabinets are "jumped" together behind fascia
- ELECTRICAL HOOK-UP= 120V Service to sign and final connection is by others
- ACCESS= Pepper channel logo is removable for access to LED power supply beyond

#### COLOR SPECIFICATIONS

- P1 P.T.M. PMS #484C "Roasted Red" NOTE: Paint all exposed fasteners to match adjacent finish
- P2 P.T.M. PMS #4625C "Adobo Brown"
- P3 Paint A-N "White"



3 ILLUMINATION RENDERING  
3.0 SCALE: N.T.S.



2.625 SQ. FT.  
PER FACE

**SPECIFICATIONS FOR (1) ILLUMINATED D/F MINI DIGITAL PICKUP SIGN**

- 1 POST=** Brake-formed 1/8" aluminum body w/ welded & finished top cap
  - 1a Text Graphics:** CNC Routed and backed w/ 3/16" Milk White acrylic
  - 1b Logo Graphic:** CNC Routed and backed w/ 3/16" Milk White acrylic then overlaid w/ opaque vinyl
- 2 ACCESS PANEL=** Removable full length 1/8" aluminum back panel

**ILLUMINATION=** Internally illuminated via Sloan Prism Mini White LEDs

- 3 MOUNTING=** 1/4" Aluminum plate w/ mounting slots to allow rotational adjustment of 25° each direction

**CAISSON=** Sonotube formed concrete caisson and (3) 1/2" dia. expansion anchors w/ washers and leveling nuts as req.

**COLORS AND FINISHES**

- (PC1)** Powder coat IFS Rustic SRBM 90146
- (V3)** Arlon cast vinyl #2100-3663 "Adobo Brown"

**ADCON**

3725 Canal Drive  
Fort Collins, CO 80524  
970 484 3637  
www.adconsigns.com

These documents and plans have been created by and are the exclusive intellectual property of Adcon Inc. Any unauthorized use, disclosure, dissemination or duplication of any of the information contained herein may result in liability under applicable laws.

**Shop Drawing for:**  
**Chipotle Mexican Grill Falcon**  
Store # 4612  
7565 Falcon Market Place  
Falcon, CO 80831

Sign Type: Mini Digital Pickup

Date: November 03, 2022  
Drawn by: Charles L.  
Account Manager: Kristi M.  
Project Manager: Cody R.  
File Name: DPU MINI

**Client Approval**

Signature \_\_\_\_\_

Date \_\_\_\_\_

NOTE: Please ensure all red line changes are noted on this drawing prior to returning it to ADCON. Subsequent to ADCON incorporating the red line changes requested on this drawing, any further changes will result in additional billing at the rate of \$86 per hour.

- Approved
- Approved As Noted
- Revise And Resubmit

Production Mgr. Approval \_\_\_\_\_ Date \_\_\_\_\_

Project Mgr. Approval \_\_\_\_\_ Date \_\_\_\_\_

Account Mgr. Approval \_\_\_\_\_ Date \_\_\_\_\_

P&D Mgr. Approval \_\_\_\_\_ Date \_\_\_\_\_

**Revision Notes:**

Shop Set

---



---



---



---



---



---



---



---



---



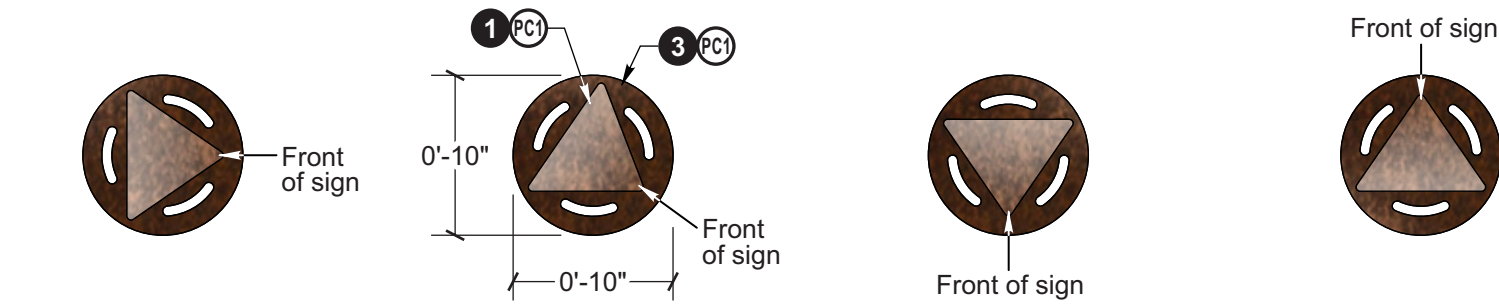
---

Dot No. .3

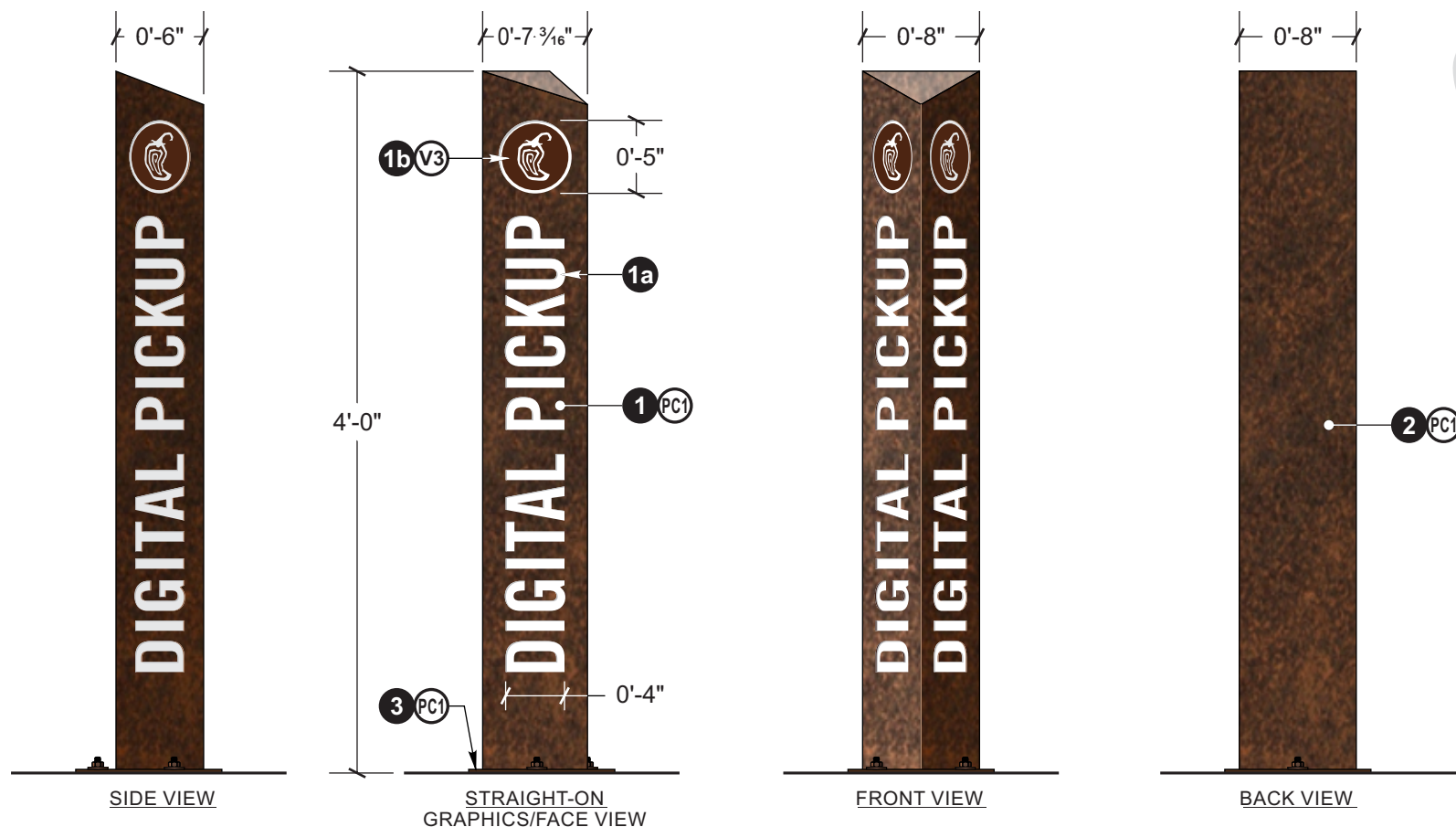
W.O. No. 5030

Rev. No. 0 Date: 11-30-22  
By: CCL

Sheet No. 4.0



**1 ROTATED PLAN VIEWS**  
4.0 SCALE: 1"=1'-0"



**2 DIGITAL PICKUP MINI SIGN- ROTATED VIEWS**  
4.0 SCALE: 1"=1'-0"



**3 ILLUMINATION RENDERING TYP.**  
4.0 SCALE: N.T.S.

### Client Approval

Signature \_\_\_\_\_

Date \_\_\_\_\_

NOTE: Please ensure all red line changes are noted on this drawing prior to returning it to ADCON. Subsequent to ADCON incorporating the red line changes requested on this drawing, any further changes will result in additional billing at the rate of \$86 per hour.

- Approved
- Approved As Noted
- Revise And Resubmit

Production Mgr. Approval \_\_\_\_\_ Date \_\_\_\_\_

Project Mgr. Approval \_\_\_\_\_ Date \_\_\_\_\_

Account Mgr. Approval \_\_\_\_\_ Date \_\_\_\_\_

P&D Mgr. Approval \_\_\_\_\_ Date \_\_\_\_\_

Revision Notes:

\_\_\_\_\_

\_\_\_\_\_

\_\_\_\_\_

\_\_\_\_\_

\_\_\_\_\_

\_\_\_\_\_

\_\_\_\_\_

\_\_\_\_\_

\_\_\_\_\_

\_\_\_\_\_

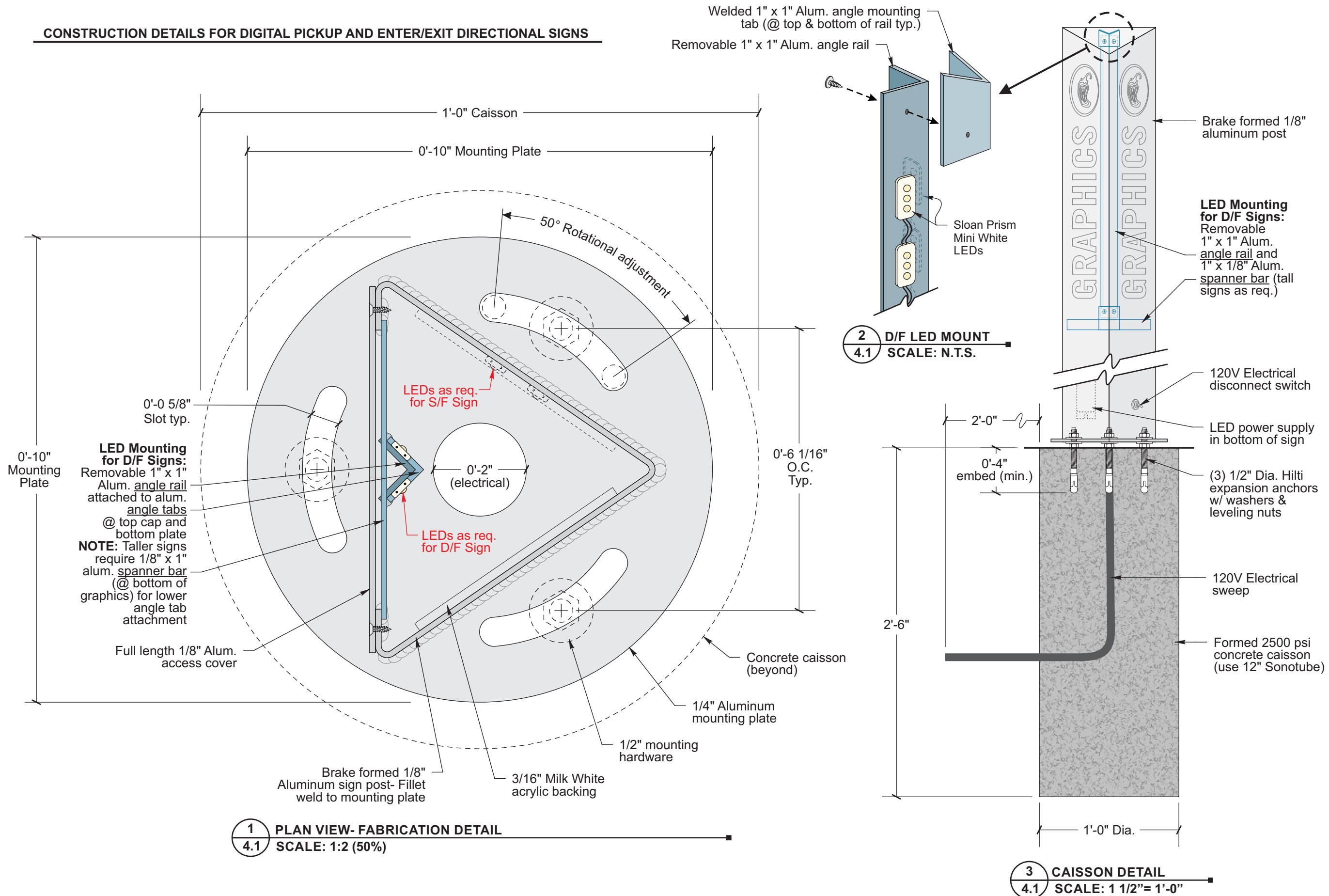
Dot No. **.3**

W.O. No. **5030**

Rev. No. **0** Date: \_\_\_\_\_ By: \_\_\_\_\_

Sheet No. **4.1**

## CONSTRUCTION DETAILS FOR DIGITAL PICKUP AND ENTER/EXIT DIRECTIONAL SIGNS



5.4  
SQ. FT.

# ADCON

3725 Canal Drive  
Fort Collins, CO 80524  
970 484 3637  
www.adconsigns.com

These documents and plans have been created by and are the exclusive intellectual property of Adcon Inc. Any unauthorized use, disclosure, dissemination or duplication of any of the information contained herein may result in liability under applicable laws.

**Shop Drawing for:**  
**Chipotle Mexican Grill Falcon**  
Store # 4612  
7565 Falcon Market Place  
Falcon, CO 80831

Sign Type: \_\_\_\_\_ Clearance Bar

Date: \_\_\_\_\_ November 03, 2022  
Drawn by: \_\_\_\_\_ Charles L.  
Account Manager: \_\_\_\_\_ Kristi M.  
Project Manager: \_\_\_\_\_ Cody R.  
File Name: \_\_\_\_\_ VALUE Clearance Bar

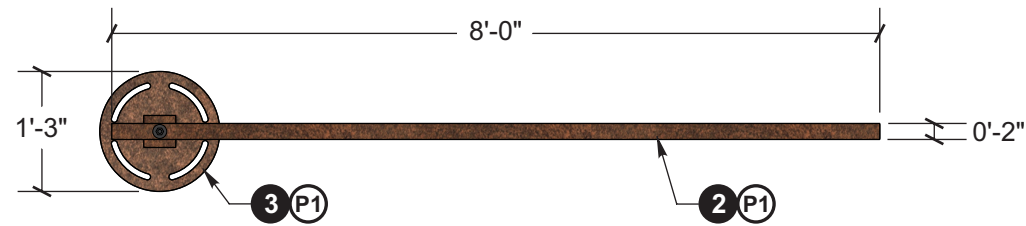
### SPECIFICATIONS FOR (1) NON-ILLUMINATED S/F BREAKAWAY CLEARANCE BAR

- 1 POST= 4" x 4" x 1/4" Alum. sq. tube w/ 3/8" alum top plate and pivot
  - 2 CLEARANCE BAR= 2" x 4" x 1/8" Alum. rec. tube w/ black PVC end caps
    - 2a Graphics: Reflective vinyl overlay

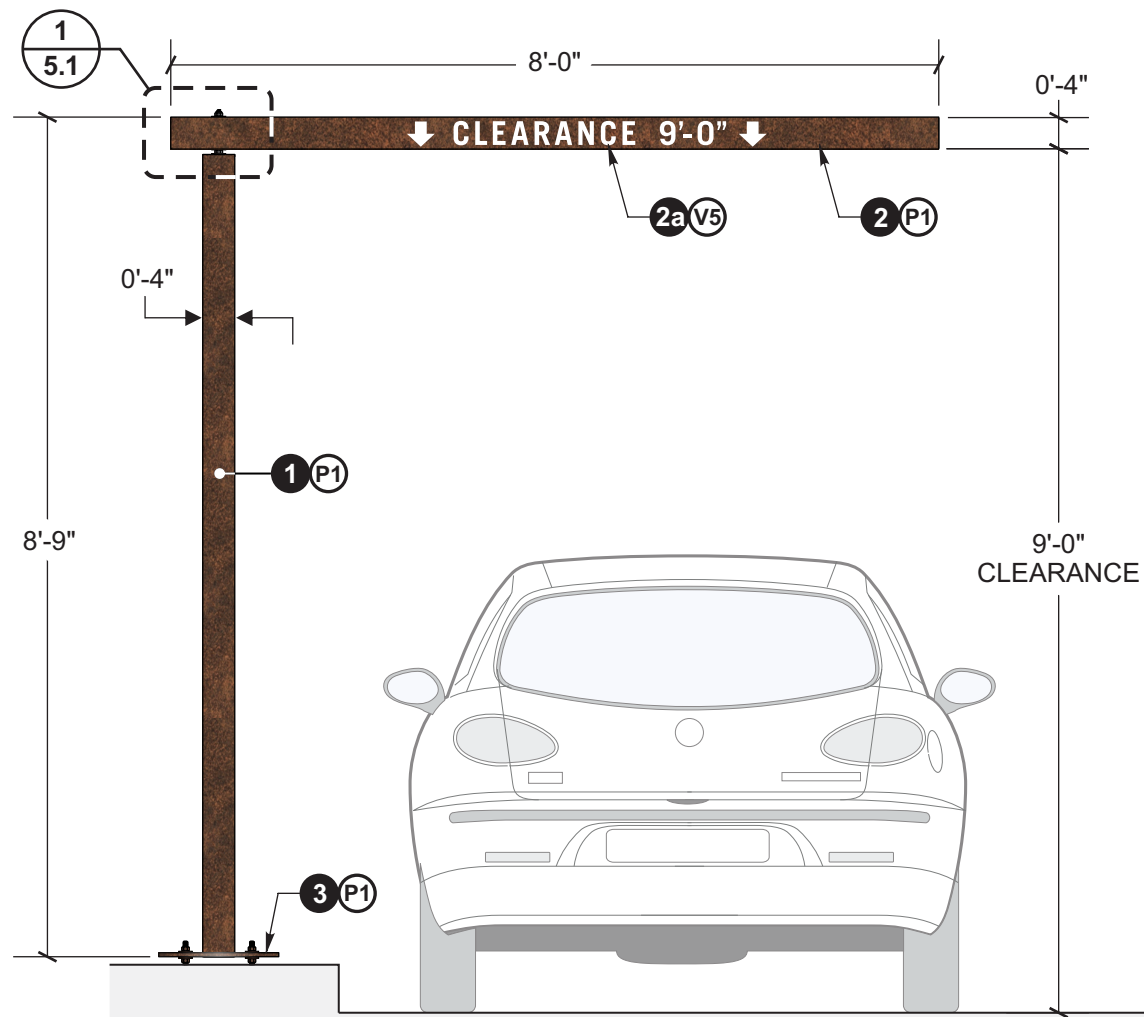
**Breakaway:** To minimize damage from impact, the top beam will give way and rotate when struck. Beam can then be manually rotated back to original position  
**Note:** Rotation from fixed position will break shear/alignment pin which can be easily serviced during realignment of clearance bar
  - 3 MOUNTING= Slotted 1/2" alum. base plate attaches to embedded bolts in caisson
- CAISSON=** Sonotube formed concrete caisson w/ embedded mounting hardware (four 5/8" All-thread welded to 1/8" steel spacer plates w/ washers and leveling nuts).

### COLOR SPECIFICATIONS

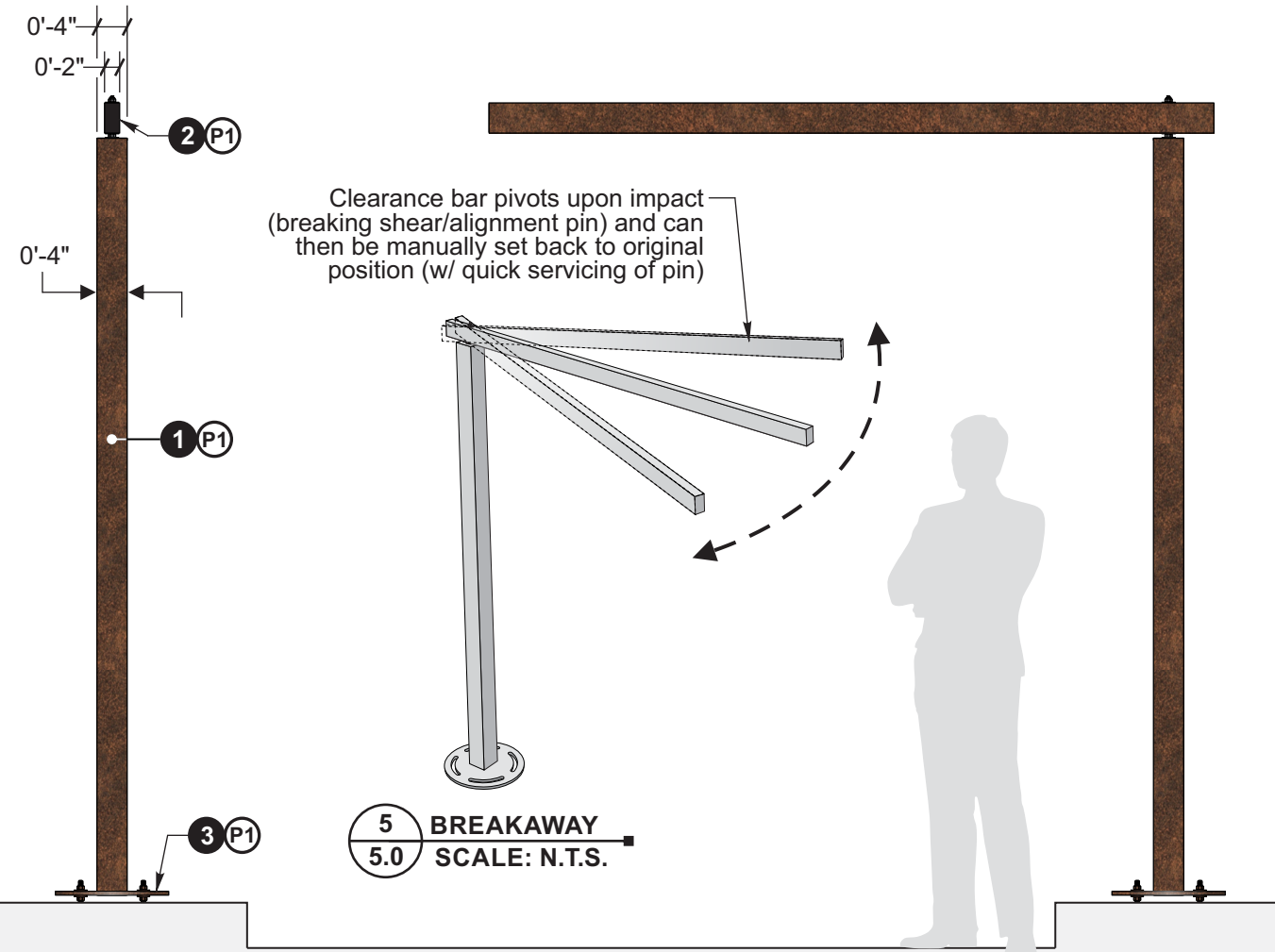
- P1 Powder coat IFS Rustic SRBM 90146
- V5 Reflective White Vinyl



1 PLAN VIEW  
5.0 SCALE: 1/2"=1'-0"



2 ELEVATION  
5.0 SCALE: 1/2"=1'-0"



3 END VIEW  
5.0 SCALE: 1/2"=1'-0"

4 OPPOSITE ELEVATION  
5.0 SCALE: 1/2"=1'-0"

5 BREAKAWAY  
5.0 SCALE: N.T.S.

### Client Approval

Signature \_\_\_\_\_

Date \_\_\_\_\_

NOTE: Please ensure all red line changes are noted on this drawing prior to returning it to ADCON. Subsequent to ADCON incorporating the red line changes requested on this drawing, any further changes will result in additional billing at the rate of \$86 per hour.

Approved

Approved As Noted

Revise And Resubmit

Production Mgr. Approval	Date
Project Mgr. Approval	Date
Account Mgr. Approval	Date
P&D Mgr. Approval	Date

### Revision Notes:

Shop Set

---



---



---



---



---



---



---



---



---



---

Dot No. .4

W.O. No. 5030

Rev. No. 0 Date: 11-30-22 By: CCL

Sheet No. 5.0



## Shop Drawing for: Chipotle Mexican Grill Falcon

Store # 4612  
7565 Falcon Market Place  
Falcon, CO 80831

Sign Type: Clearance Bar

Date: November 03, 2022  
Drawn by: Charles L.  
Account Manager: Kristi M.  
Project Manager: Cody R.  
File Name: VALUE Clearance Bar  
Details

### Client Approval

Signature

Date

NOTE: Please ensure all red line changes are noted on this drawing prior to returning it to ADCON. Subsequent to ADCON incorporating the red line changes requested on this drawing, any further changes will result in additional billing at the rate of \$86 per hour.

- Approved
- Approved As Noted
- Revise And Resubmit

Production Mgr. Approval \_\_\_\_\_ Date \_\_\_\_\_

Project Mgr. Approval \_\_\_\_\_ Date \_\_\_\_\_

Account Mgr. Approval \_\_\_\_\_ Date \_\_\_\_\_

P&D Mgr. Approval \_\_\_\_\_ Date \_\_\_\_\_

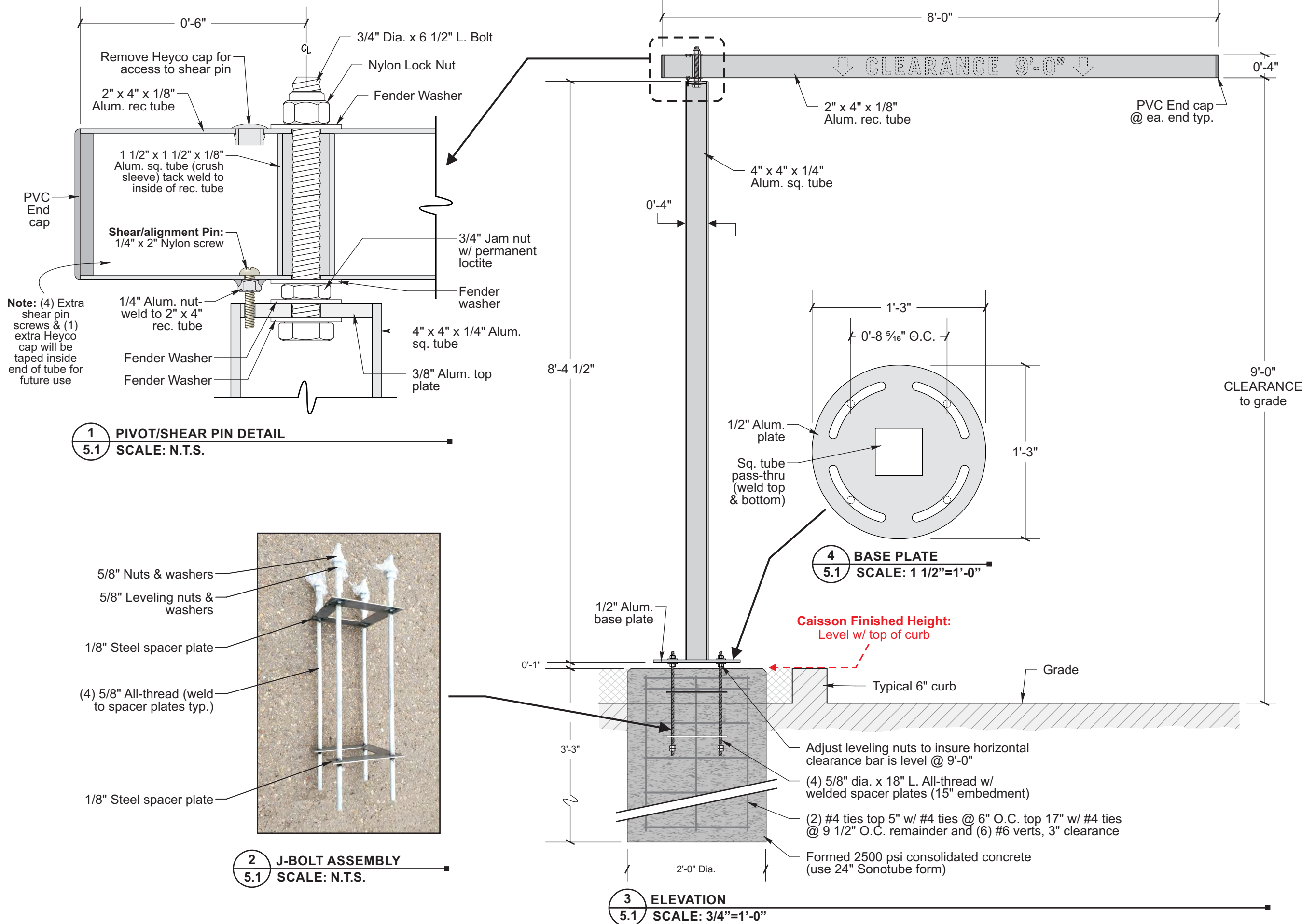
Revision Notes:

Dot No. .4

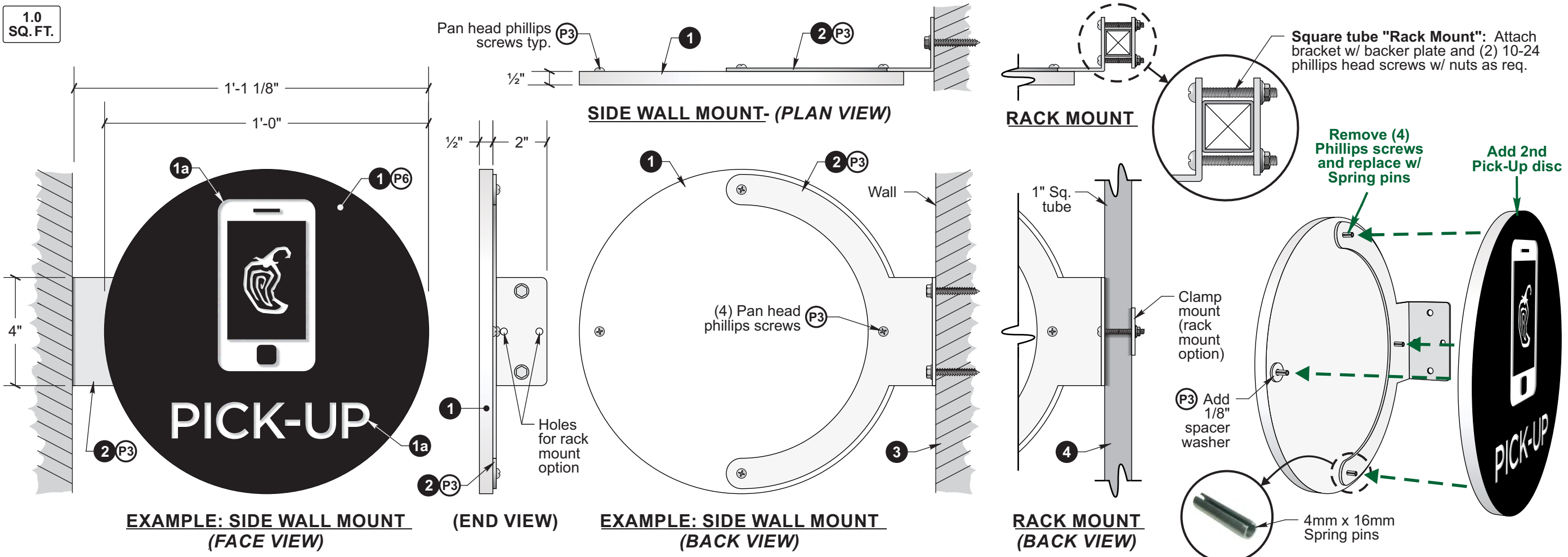
W.O. No. 5030

Rev. No. 0 Date: \_\_\_\_\_ By: \_\_\_\_\_

Sheet No. 5.1



1.0  
SQ. FT.



# ADCON

3725 Canal Drive  
Fort Collins, CO 80524  
970 484 3637  
www.adconsigns.com

These documents and plans have been created by and are the exclusive intellectual property of Adcon Inc. Any unauthorized use, disclosure, dissemination or duplication of any of the information contained herein may result in liability under applicable laws.

**Shop Drawing for:**  
**Chipotle Mexican Grill Falcon**  
Store # 4612  
7565 Falcon Market Place  
Falcon, CO 80831  
Sign Type:          Pick-Up Disc

Date:          November 03, 2022  
Drawn by:          Charles L.  
Account Manager:          Kristi M.  
Project Manager:          Cody R.  
File Name:          Pick-Up Disc

**Client Approval**

Signature \_\_\_\_\_  
Date \_\_\_\_\_  
NOTE: Please ensure all red line changes are noted on this drawing prior to returning it to ADCON. Subsequent to ADCON incorporating the red line changes requested on this drawing, any further changes will result in additional billing at the rate of \$86 per hour.  
 Approved  
 Approved As Noted  
 Revise And Resubmit

Production Mgr. Approval	Date
Project Mgr. Approval	Date
Account Mgr. Approval	Date
P&D Mgr. Approval	Date

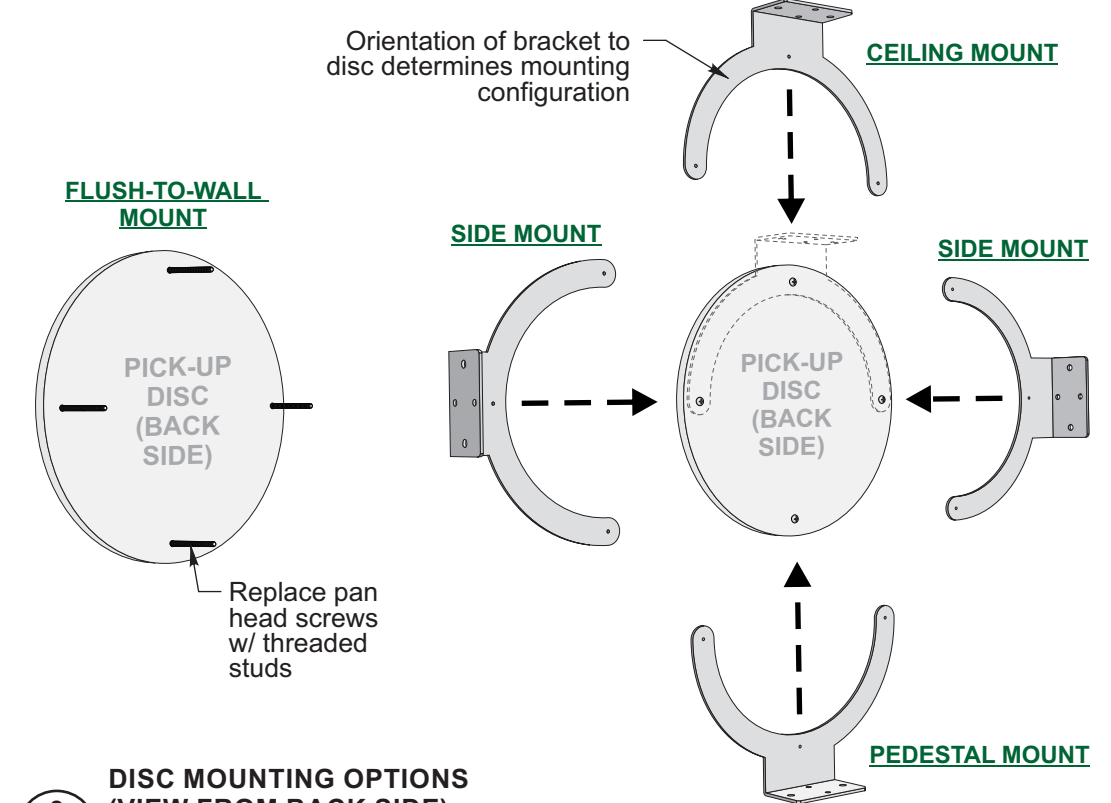
Revision Notes:  
Shop Set

\_\_\_\_\_  
\_\_\_\_\_  
\_\_\_\_\_  
\_\_\_\_\_  
\_\_\_\_\_  
\_\_\_\_\_  
\_\_\_\_\_  
\_\_\_\_\_

Dot No. **.5**  
W.O. No. **5030**  
Rev. No. **0** Date: 11-30-22  
By: CCL  
Sheet No. **6.0**

**1** PICK-UP DISC WITH MOUNTING BRACKET  
**6.0** SCALE: 3"= 1'-0"

**2** DOUBLE FACE CONVERSION  
**6.0** SCALE: N.T.S.



**3** DISC MOUNTING OPTIONS (VIEW FROM BACK SIDE)  
**6.0** SCALE: N.T.S.

**GENERAL SPECIFICATIONS AND OPTIONS FOR:  
NON-ILLUMINATED INTERIOR DISC PICK-UP SIGNS**

- 1** DISC= 1/2" White acrylic (two required for double face version)  
Front: Painted face w/ routed graphics  
Back: (4) Drilled & tapped mounting holes for 10-32 hardware  
NOTE: Back and returns are bare acrylic (unpainted)
- 1a** Pepper Graphic: 1/16" depth (1/32" bit)  
"Pick-Up" & Phone Graphic: 1/8" depth (1/8" bit)
- 2** BRACKET= C.A.M. Routed and brake formed 1/8" Aluminum
- 3** MOUNTING= WALL MOUNT OPTION:  
Flush-to-wall: Mount disc to wall w/ studs & adhesive  
Side/Ceiling/Pedestal Flag Mount: Attach disc to bracket w/ 10-32 pan head screws (or Spring pins for D/F version) Attach bracket to wall w/ #12 fasteners as req.
- 4** MOUNTING= RACK MOUNT OPTION:  
Side/Pedestal Flag Mount: Attach disc to bracket w/ 10-32 pan head screws (or Spring pins for D/F version)- Clamp bracket to sq. tube frame of rack using aluminum backing plate and (2) 10-24 phillips head machine screws w/ nuts as req.

**COLORS AND FINISHES**

- P3** Paint A-N "White"    **P6** Paint A-N "Black"    **NOTE:** Paint all exposed fasteners to match adjacent finish

**ORDER CHECKLIST**

**1** SIGN QUANTITY \_\_\_\_\_

SINGLE FACE  
 DOUBLE FACE

FLUSH-TO-WALL MOUNT (no bracket)  
 FLAG MOUNT (w/ bracket: side/ceiling/pedestal)

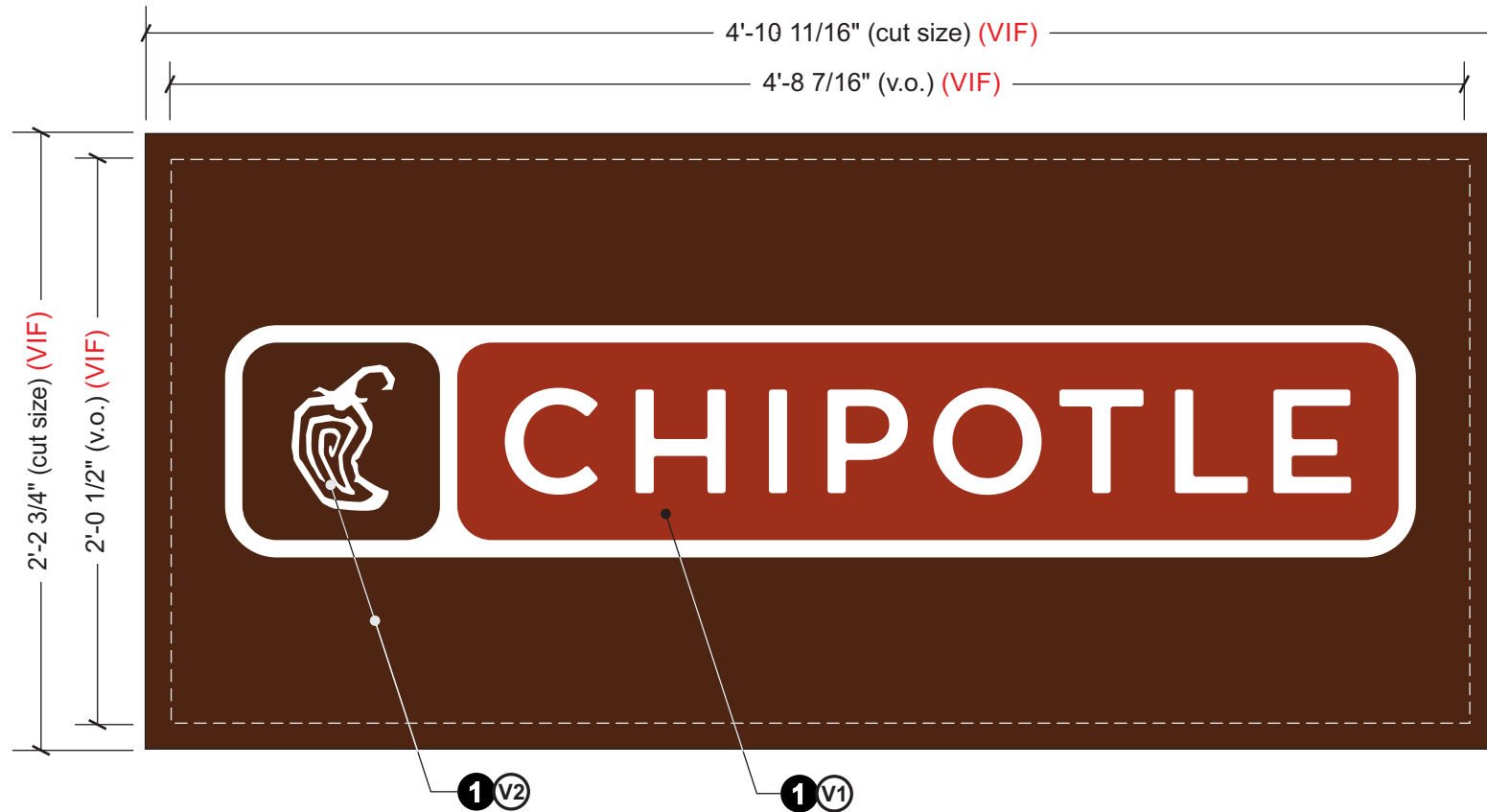
RACK MOUNT (include rack mount hardware kit)

MOPUS SHELF DECALS (Include with order)



9.625  
SQ. FT. ea.

**On Hold for Fabrication  
as of 11-30-2022**



**1** PANEL FACE ELEVATION  
7.0 SCALE: 1 1/2" = 1'-0"

**SPECIFICATIONS FOR (4) PYLON TENANT PANELS - (2ea.) PER (2) PYLON LOCATIONS**

**1** FACE TYPE= New .187" (V.I.F.) white acrylic faces. Install in two sides of existing tenant pylons

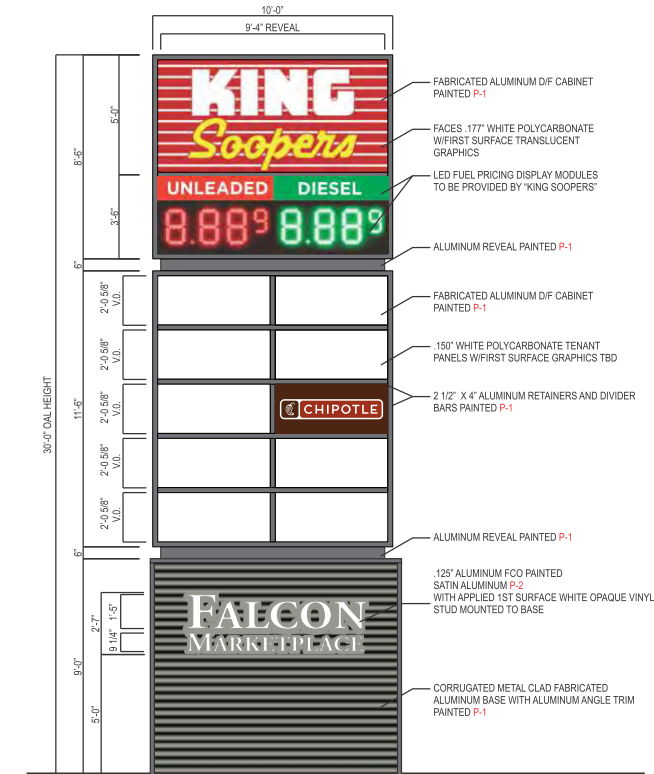
**GRAPHICS**= Translucent vinyl graphics, first surface

**COLOR SPECIFICATIONS**

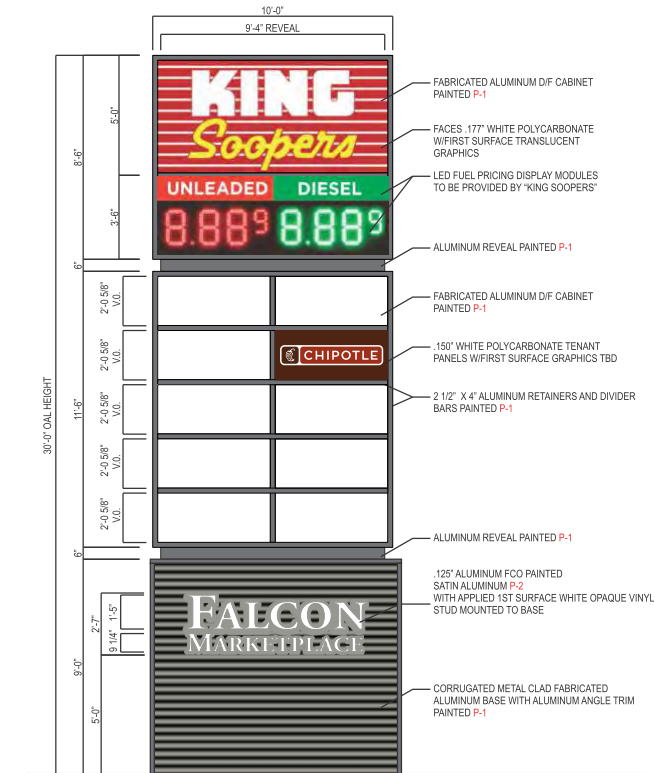
**V1** Arlon cast vinyl #2100-3664 "Roasted Red" graphics

**V2** Arlon cast vinyl #2100-3663 "Adobo Brown" graphics

**ALL PYLONS EXISTING IN LOCATION.  
ADCON RESPONSIBLE FOR NEW  
PANELS ONLY**



**2** PYLON E1 - PLACEMENT RENDERING (TYP BOTH SIDES)  
7.0 LOCATED AT CORNER OF E. WOODMAN & MERIDIAN  
SCALE: 1/8" = 1'-0"



**3** PYLON E2 - PLACEMENT RENDERING (TYP BOTH SIDES)  
7.0 LOCATED DIRECTLY OFF E. WOODMAN  
SCALE: 1/8" = 1'-0"

**ADCON**

3725 Canal Drive  
Fort Collins, CO 80524  
970 484 3637  
www.adconsigns.com

These documents and plans have been created by and are the exclusive intellectual property of Adcon Inc. Any unauthorized use, disclosure, dissemination or duplication of any of the information contained herein may result in liability under applicable laws.

Shop Drawing for:  
**Chipotle Mexican Grill  
Falcon**  
Store # 4612  
7565 Falcon Market Place  
Falcon, CO 80831

Sign Type: \_\_\_\_\_ Tenant Panels

Date: \_\_\_\_\_ November 03, 2022  
Drawn by: \_\_\_\_\_ Charles L.  
Account Manager: \_\_\_\_\_ Kristi M.  
Project Manager: \_\_\_\_\_ Cody R.  
File Name: \_\_\_\_\_ Tenant Panels

**Client Approval**

Signature \_\_\_\_\_

Date \_\_\_\_\_

NOTE: Please ensure all red line changes are noted on this drawing prior to returning it to ADCON. Subsequent to ADCON incorporating the red line changes requested on this drawing, any further changes will result in additional billing at the rate of \$86 per hour.

- Approved
- Approved As Noted
- Revise And Resubmit

Production Mgr. Approval \_\_\_\_\_ Date \_\_\_\_\_

Project Mgr. Approval \_\_\_\_\_ Date \_\_\_\_\_

Account Mgr. Approval \_\_\_\_\_ Date \_\_\_\_\_

P&D Mgr. Approval \_\_\_\_\_ Date \_\_\_\_\_

**Revision Notes:**

*Pylons existing notation  
added*

Quote No. **6**

W.O. No. **5030**

Rev. No. **1** Date: 12-06-22  
By: CCL

Sheet No. **7.0**