

Client Approval

Signature _____
Date _____
NOTE: Please ensure all red line changes are noted on this drawing prior to returning it to ADCON. Subsequent to ADCON incorporating the red line changes requested on this drawing, any further changes will result in additional billing at the rate of \$86 per hour.

Approved
 Approved As Noted
 Revise And Resubmit

Production Mgr. Approval	Date
Project Mgr. Approval	Date
Account Mgr. Approval	Date
P&D Mgr. Approval	Date

Revision Notes:

PPR2249

Quote No.

W.O. No. **5030**

Rev. No. **B** Date: 11-04-22
By: CCL

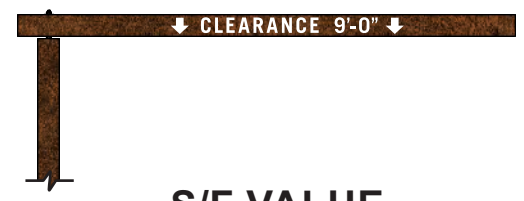
Sheet No. **1.0**

Please include:
-setback distances from all lot lines to proposed signs
Freestanding signs (depict if items near signs):
-sidewalks, wall, or fencing
-depiction of any floodplains, no-build areas, or drainage facilities



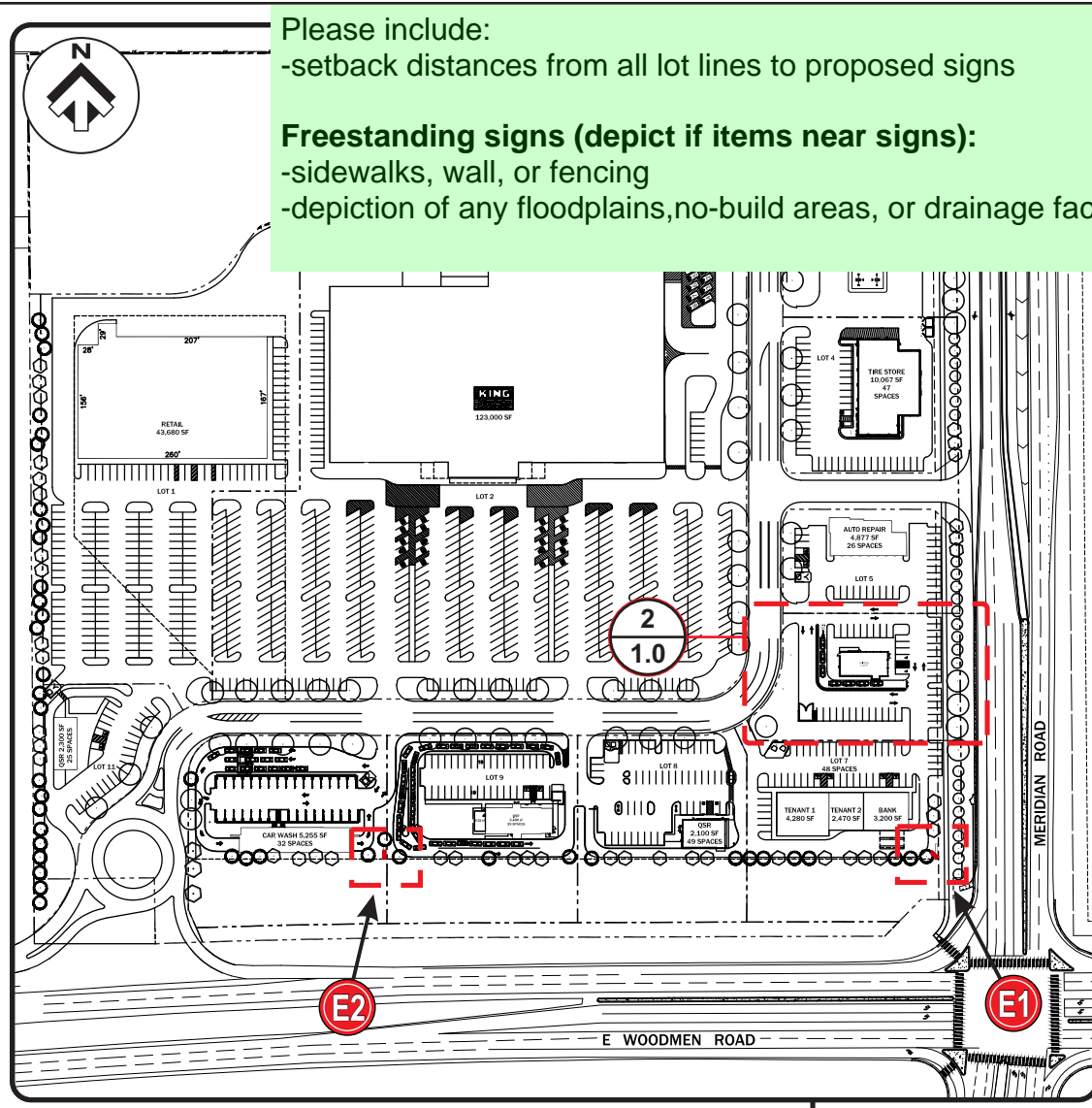
A BW3-22 S/F WALL SIGN
Quantity (3)

B DIGITAL PICK-UP MINI D/F
Quantity (1)



C S/F VALUE CLEARANCE BAR
Quantity (1)

D INTERIOR PICK-UP DISC
S/F Flush Wall mounted
Quantity (1)



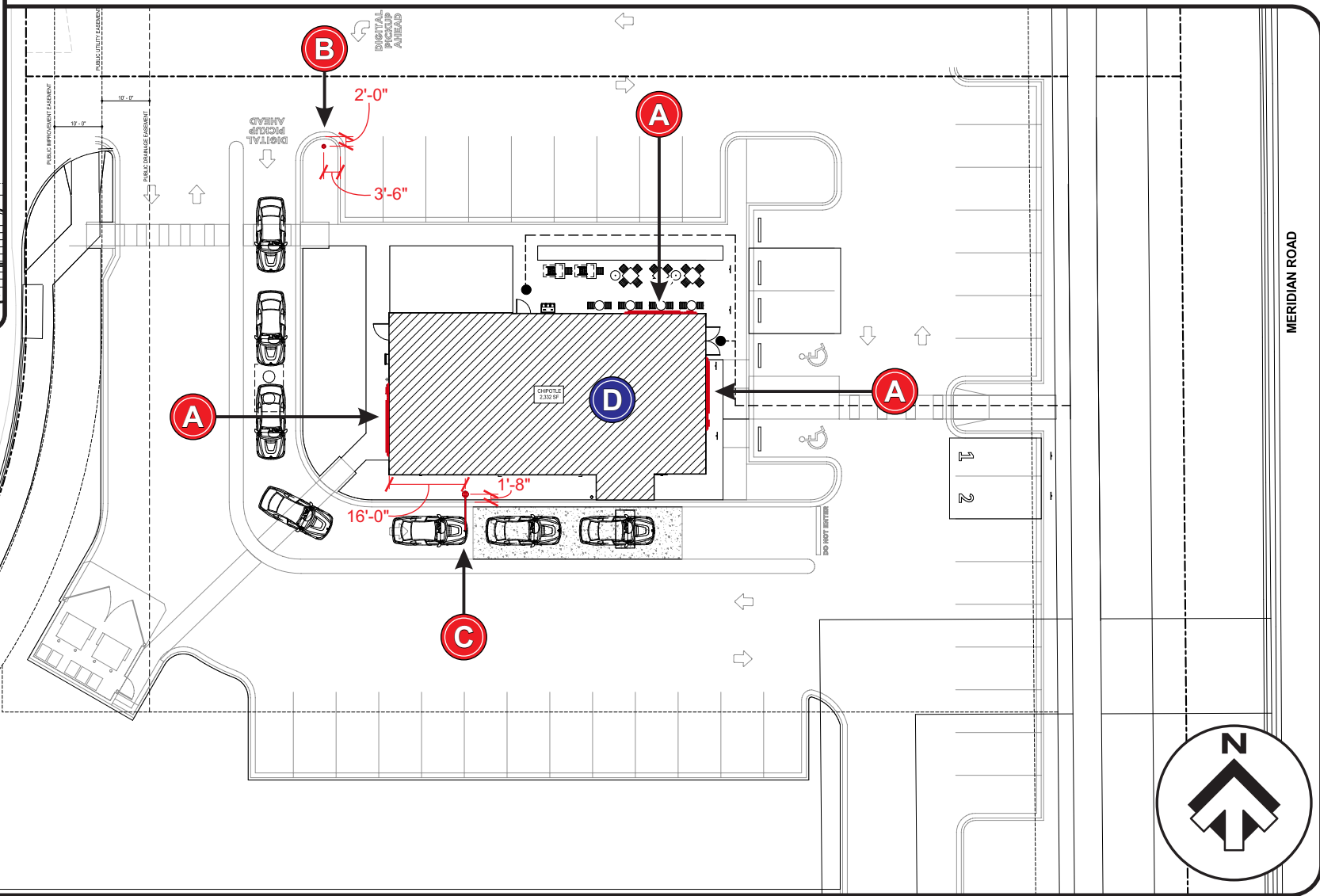
1 SITE PLAN
1.0 SCALE: 1" = 250'-0"



E1 S/F TENANT PANELS
D/F MULTI-TENANT PYLON
Quantity (2)

E2 S/F TENANT PANELS
D/F MULTI-TENANT PYLON
Quantity (2)

2 SITE PLAN - LOT DETAIL
1.0 SCALE: 1/32" = 1'-0"



TOTAL ALLOWED SQ FT= 308.5 TOTAL SIGN FACE SQ FT= 187.5

Design Proposal for:
Chipotle Mexican Grill

Falcon
Store # 4612
7565 Falcon Market Place
Falcon, CO 80831

Sign Type: _____ Multiple

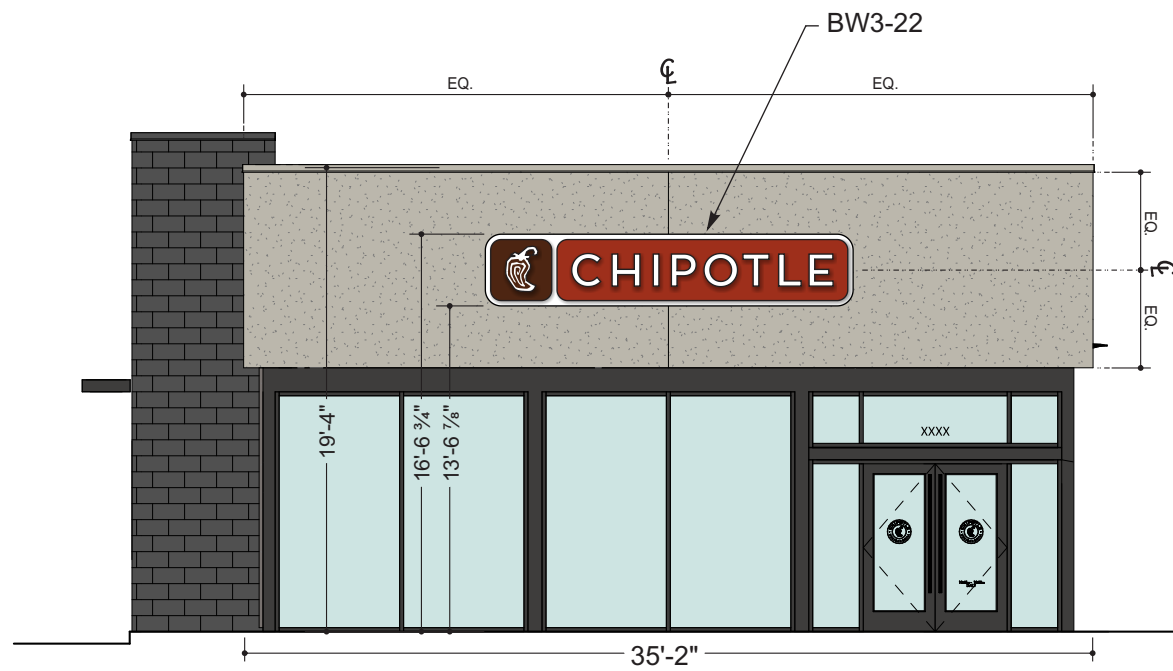
Date: _____ November 03, 2022

Drawn by: _____ Charles L.

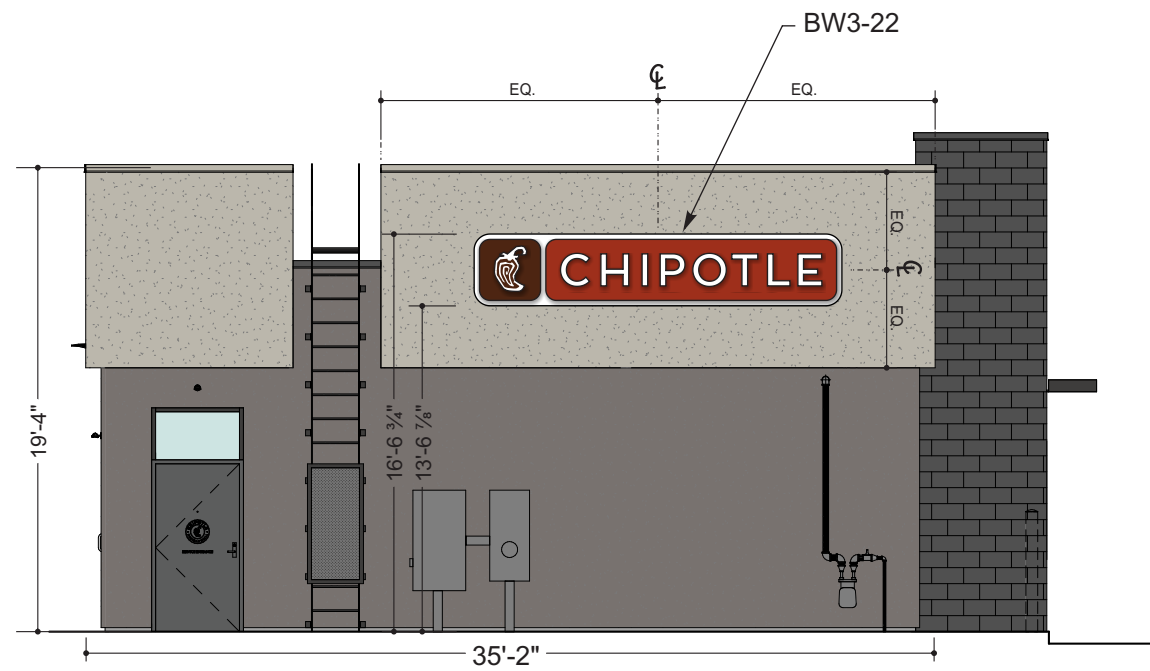
Account Manager: _____ Kristi M.

Project Manager: _____

File Name: _____ Elevations



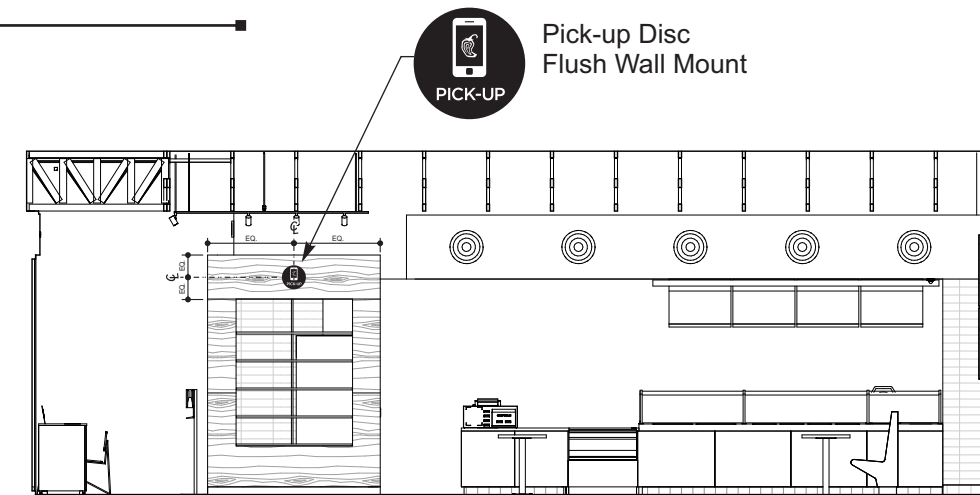
1 EAST ELEVATION
2.0 SCALE: 1/8" = 1'-0"



2 WEST ELEVATION
2.0 SCALE: 1/8" = 1'-0"



3 NORTH ELEVATION
2.0 SCALE: 1/8" = 1'-0"



4 INTERIOR ELEVATION
2.0 SCALE: 1/8" = 1'-0"

Client Approval

Signature _____

Date _____

NOTE: Please ensure all red line changes are noted on this drawing prior to returning it to ADCON. Subsequent to ADCON incorporating the red line changes requested on this drawing, any further changes will result in additional billing at the rate of \$86 per hour.

- Approved
- Approved As Noted
- Revise And Resubmit

Production Mgr. Approval _____ Date _____

Project Mgr. Approval _____ Date _____

Account Mgr. Approval _____ Date _____

P&D Mgr. Approval _____ Date _____

Revision Notes:

PPR2249

Quote No. _____

W.O. No. **5030**

Rev. No. **C** Date: 11-07-22
By: CCL

Sheet No. **2.0**

Design Proposal for:
Chipotle Mexican Grill

Falcon
Store # 4612
7565 Falcon Market Place
Falcon, CO 80831

Sign Type: _____ BW3-22

Date: _____ November 03, 2022

Drawn by: _____ Charles L.

Account Manager: _____ Kristi M.

Project Manager: _____

File Name: _____ BW3-22

Client Approval

Signature _____

Date _____

NOTE: Please ensure all red line changes are noted on this drawing prior to returning it to ADCON. Subsequent to ADCON incorporating the red line changes requested on this drawing, any further changes will result in additional billing at the rate of \$86 per hour.

- Approved
 Approved As Noted
 Revise And Resubmit

Production Mgr. Approval _____ Date _____

Project Mgr. Approval _____ Date _____

Account Mgr. Approval _____ Date _____

P&D Mgr. Approval _____ Date _____

Revision Notes:

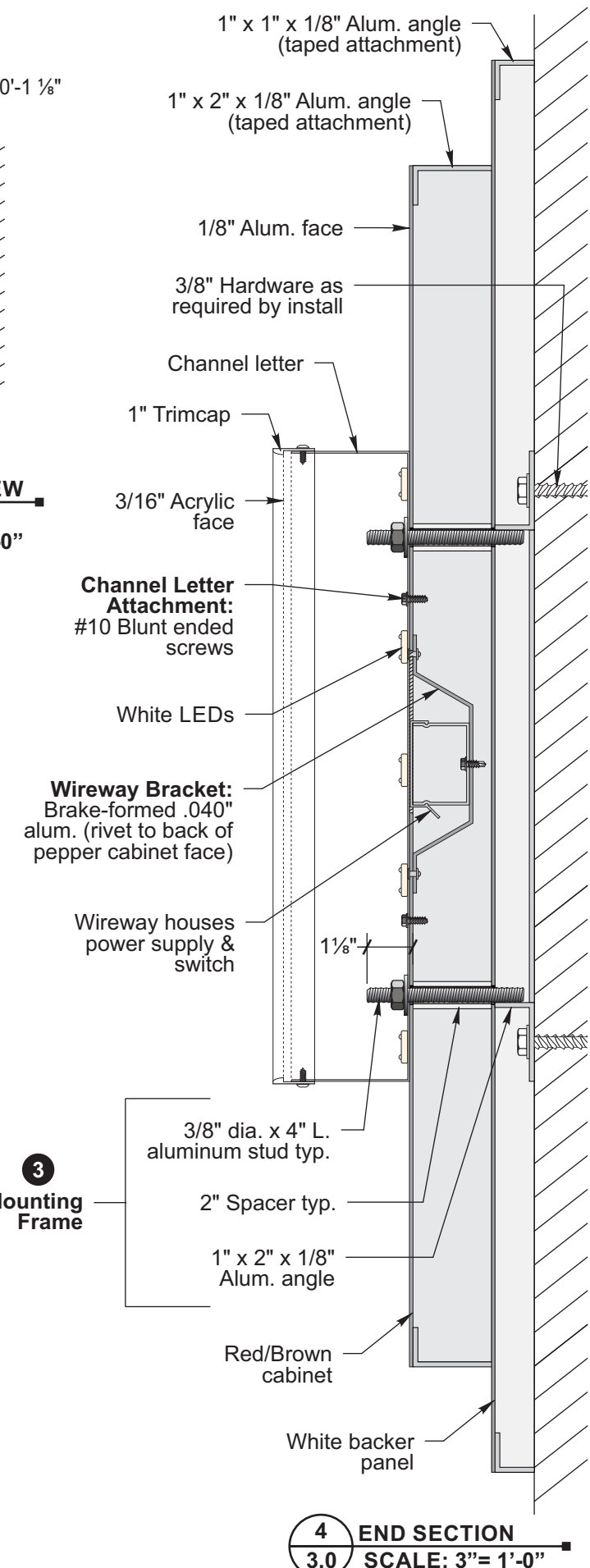
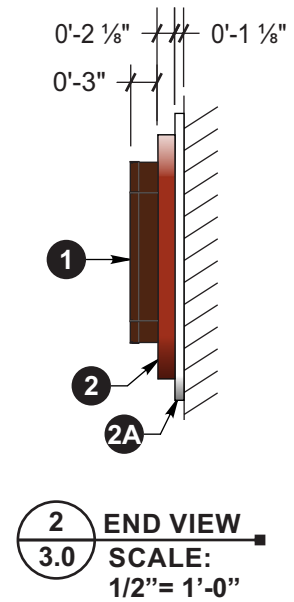
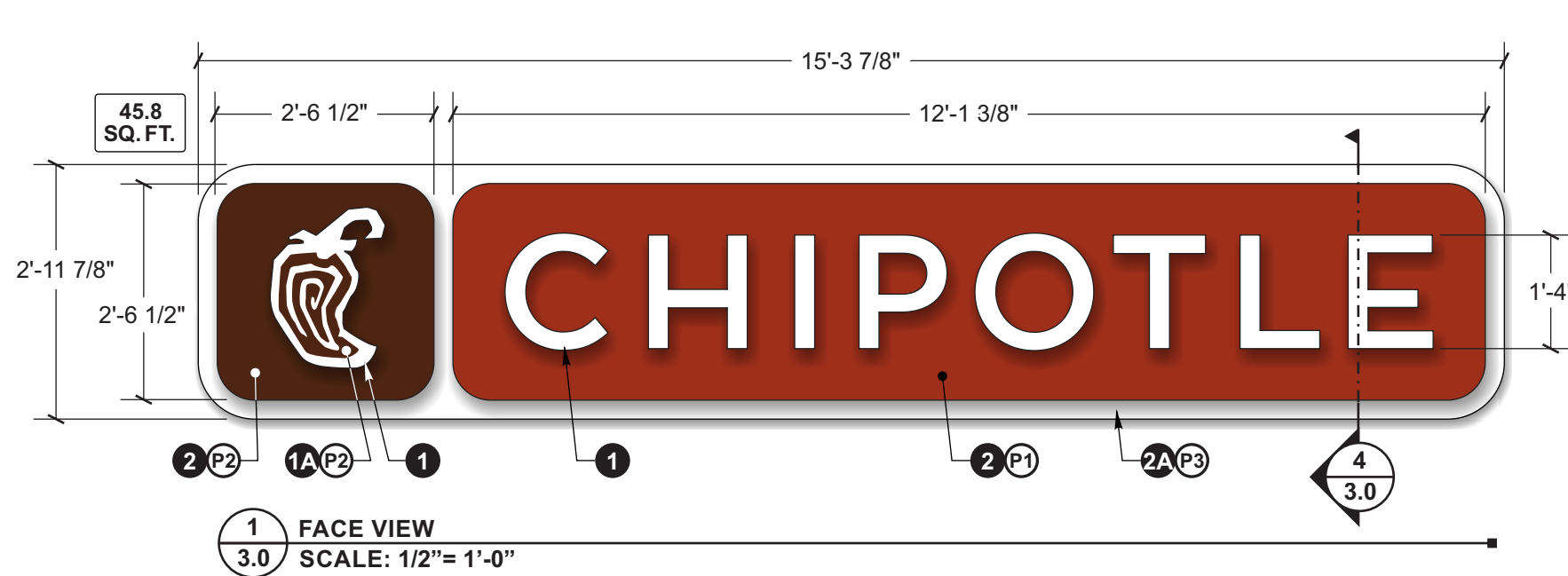
PPR2249

Dot No. _____

W.O. No. **5030**

Rev. No. **B** Date: 11-04-22
By: CCL

Sheet No. **3.0**



ELECTRICAL

POWER SUPPLY= 120V primary/12V secondary power supply housed inside wireway behind pepper channel logo
POWER DISCONNECT= Toggle switch on end of brown pepper cabinet
ELECTRICAL LEADS= 120V: Provide (1) 6'-0" pigtail in sealite conduit
12V: Provide (2) 6'-0" pigtails
NOTE: 12V leads between Red and Brown cabinets are "jumped" together behind fascia
ELECTRICAL HOOK-UP= 120V Service to sign and final connection is by others
ACCESS= Pepper channel logo is removable for access to LED power supply beyond

COLOR SPECIFICATIONS

- (P1) P.T.M. PMS #484C "Roasted Red" **NOTE**: Paint all exposed fasteners to match adjacent finish
(P2) P.T.M. PMS #4625C "Adobo Brown"
(P3) Paint A-N "White"



SIGN TYPE BW3-22 SPECIFICATIONS FOR (3) ILLUMINATED WALL SIGN

1 CHANNEL LETTERS "CHIPOTLE" AND PEPPER LOGO

LETTER TYPE= Face-Lit pan channels **DEPTH**= 3"
FACES= 3/16" Cyro #2447 Milk-White acrylic
1A PEPPER GRAPHIC= Stud mounted .063" Aluminum Flat-cut-out overlay
TRIMCAP= 1" Brown Gemtrim
BACKS= .040" Pre-finished white aluminum
RETURNS= .040" Pre-finished Adobo Brown aluminum (w/ weep holes)
ILLUMINATION= Principal LED "Qwik Mod 2" 7100K White LEDs
MOUNTING= Mount flush to face of cabinets with #10 "blunt" ended screws as req.

2 BROWN & RED CABINETS

FACE= 1/8" Aluminum **BACK**= N/A
RETURNS= Top & Bottom Straights: 1" x 2" x 1/8" Aluminum angle
Attachment= 3/4" VHB tape
Ends/corners: (one-piece) .063" Aluminum
Attachment= Versilok adhesive
NOTE: Use fishplates @ return seams as req.

2A WHITE BACKER PANEL

FACE= 1/8" Aluminum **BACK**= N/A
RETURNS= Top & Bottom Straights: 1" x 1" x 1/8" Aluminum angle
Attachment= 3/4" VHB tape
Ends/corners: (one-piece) .063" Aluminum
Attachment= Versilok adhesive
NOTE: Use fishplates @ return seams as req.

3 MOUNTING FRAME

CONSTRUCTION= 1" x 2" x 1/8" Aluminum angle frame assembly w/ studs for thru-bolt attachment of sign components

INSTALL

MOUNTING FRAME= Attach flush to fascia w/ 3/8" hardware as req.
ASSEMBLY= 1. Slide White Backer panel over mounting frame studs
2. Place 2" Long spacers onto mounting frame studs
3. Slide Red & Brown cabinets over studs
4. Secure w/ nuts & washers

NOTE: Frame stud attachments are hidden inside of letters "C", "I", "O", "E", and pepper logo

2.625 SQ. FT.
PER FACE

SPECIFICATIONS FOR (1) ILLUMINATED D/F MINI DIGITAL PICKUP SIGN

- 1 POST=** Brake-formed 1/8" aluminum body w/ welded & finished top cap
 - 1a Text Graphics:** CNC Routed and backed w/ 3/16" Milk White acrylic
 - 1b Logo Graphic:** CNC Routed and backed w/ 3/16" Milk White acrylic then overlaid w/ opaque vinyl
- 2 ACCESS PANEL=** Removable full length 1/8" aluminum back panel

ILLUMINATION= Internally illuminated via Sloan Prism Mini White LEDs

- 3 MOUNTING=** 1/4" Aluminum plate w/ mounting slots to allow rotational adjustment of 25° each direction

CAISSON= Sonotube formed concrete caisson and (3) 1/2" dia. expansion anchors w/ washers and leveling nuts as req.

COLORS AND FINISHES

- (PC1)** Powder coat IFS Rustic SRBM 90146
- (V3)** Arlon cast vinyl #2100-3663 "Adobo Brown"

ADCON

3725 Canal Drive
Fort Collins, CO 80524
970 484 3637
www.adconsigns.com

These documents and plans have been created by and are the exclusive intellectual property of Adcon Inc. Any unauthorized use, disclosure, dissemination or duplication of any of the information contained herein may result in liability under applicable laws.

**Design Proposal for:
Chipotle Mexican Grill**

Falcon
Store # 4612
7565 Falcon Market Place
Falcon, CO 80831

Sign Type: Mini Digital Pickup

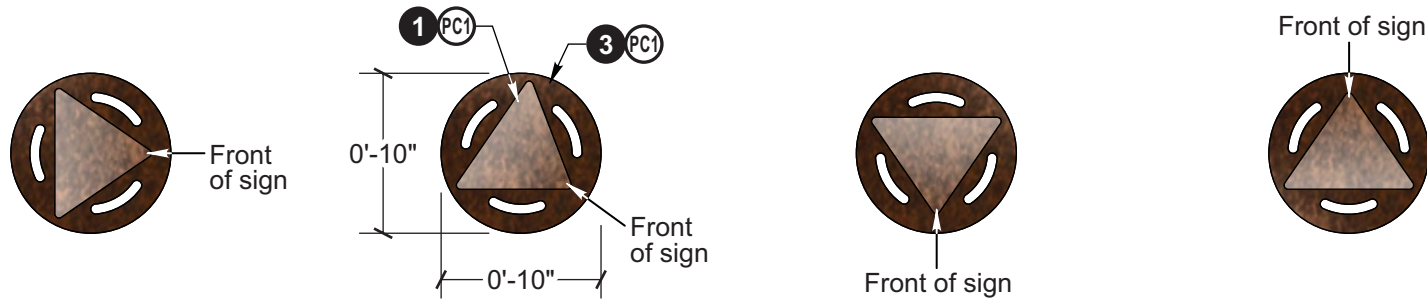
Date: November 03, 2022

Drawn by: Charles L.

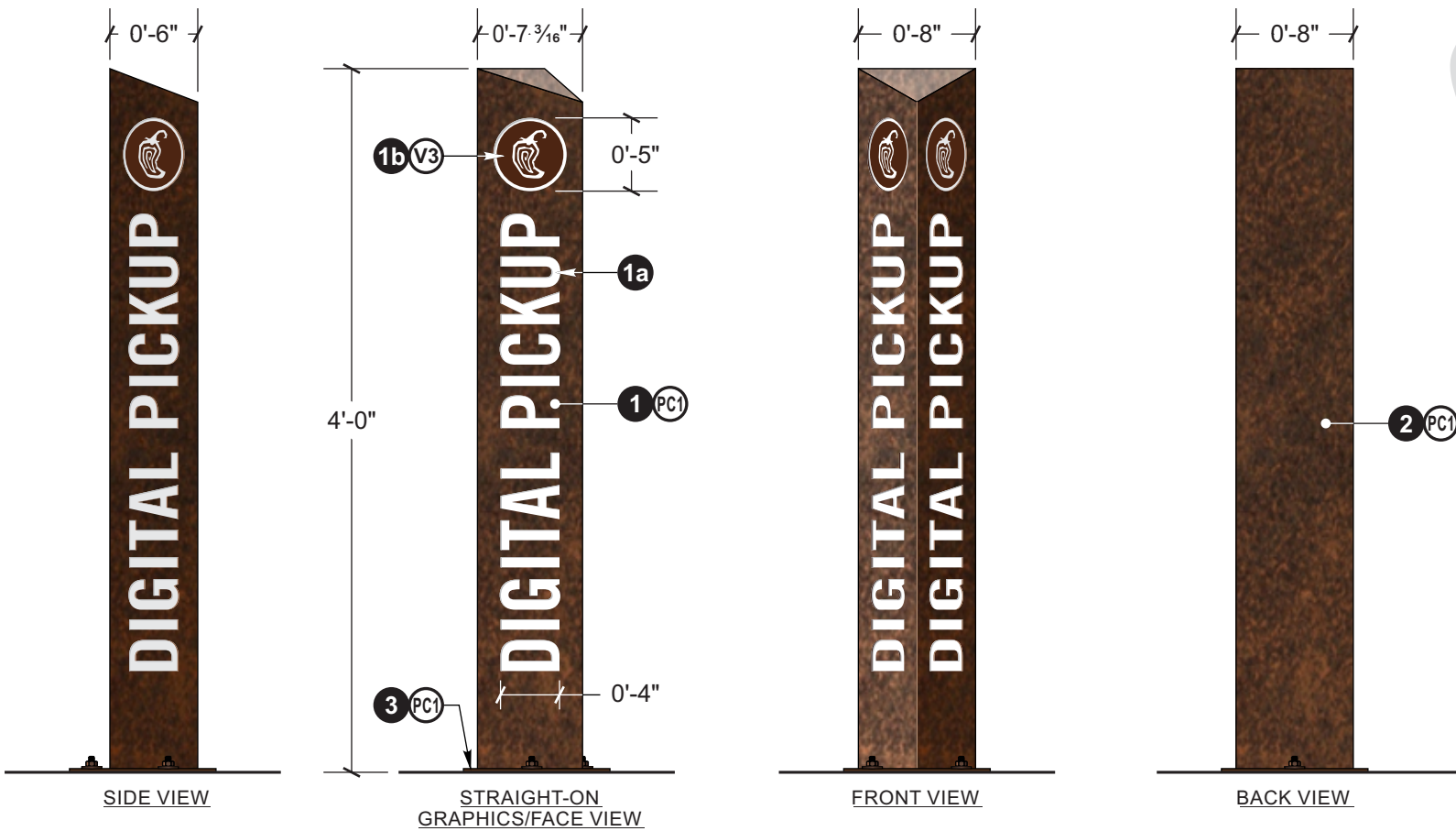
Account Manager: Kristi M.

Project Manager:

File Name: DPU MINI



1 ROTATED PLAN VIEWS
4.0 SCALE: 1"=1'-0"



2 DIGITAL PICKUP MINI SIGN- ROTATED VIEWS
4.0 SCALE: 1"=1'-0"



3 ILLUMINATION RENDERING TYP.
4.0 SCALE: N.T.S.

Client Approval

Signature _____

Date _____

NOTE: Please ensure all red line changes are noted on this drawing prior to returning it to ADCON. Subsequent to ADCON incorporating the red line changes requested on this drawing, any further changes will result in additional billing at the rate of \$86 per hour.

- Approved
- Approved As Noted
- Revise And Resubmit

Production Mgr. Approval _____ Date _____

Project Mgr. Approval _____ Date _____

Account Mgr. Approval _____ Date _____

P&D Mgr. Approval _____ Date _____

Revision Notes:

PPR2249

Dot No. _____

W.O. No. **5030**

Rev. No. **A** Date: _____
By: _____

Sheet No. **4.0**

5.4
SQ. FT.

ADCON

3725 Canal Drive
Fort Collins, CO 80524
970 484 3637
www.adconsigns.com

These documents and plans have been created by and are the exclusive intellectual property of Adcon Inc. Any unauthorized use, disclosure, dissemination or duplication of any of the information contained herein may result in liability under applicable laws.

Design Proposal for:
Chipotle Mexican Grill Falcon
Store # 4612
7565 Falcon Market Place
Falcon, CO 80831

Sign Type: _____ Clearance Bar

Date: _____ November 03, 2022
Drawn by: _____ Charles L.
Account Manager: _____ Kristi M.
Project Manager: _____
File Name: _____ VALUE Clearance Bar

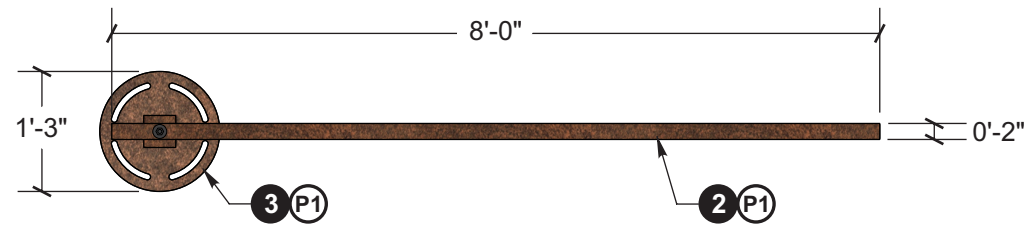
SPECIFICATIONS FOR (1) NON-ILLUMINATED S/F BREAKAWAY CLEARANCE BAR

- 1 POST= 4" x 4" x 1/4" Alum. sq. tube w/ 3/8" alum top plate and pivot
 - 2 CLEARANCE BAR= 2" x 4" x 1/8" Alum. rec. tube w/ black PVC end caps
 - 2a Graphics: Reflective vinyl overlay

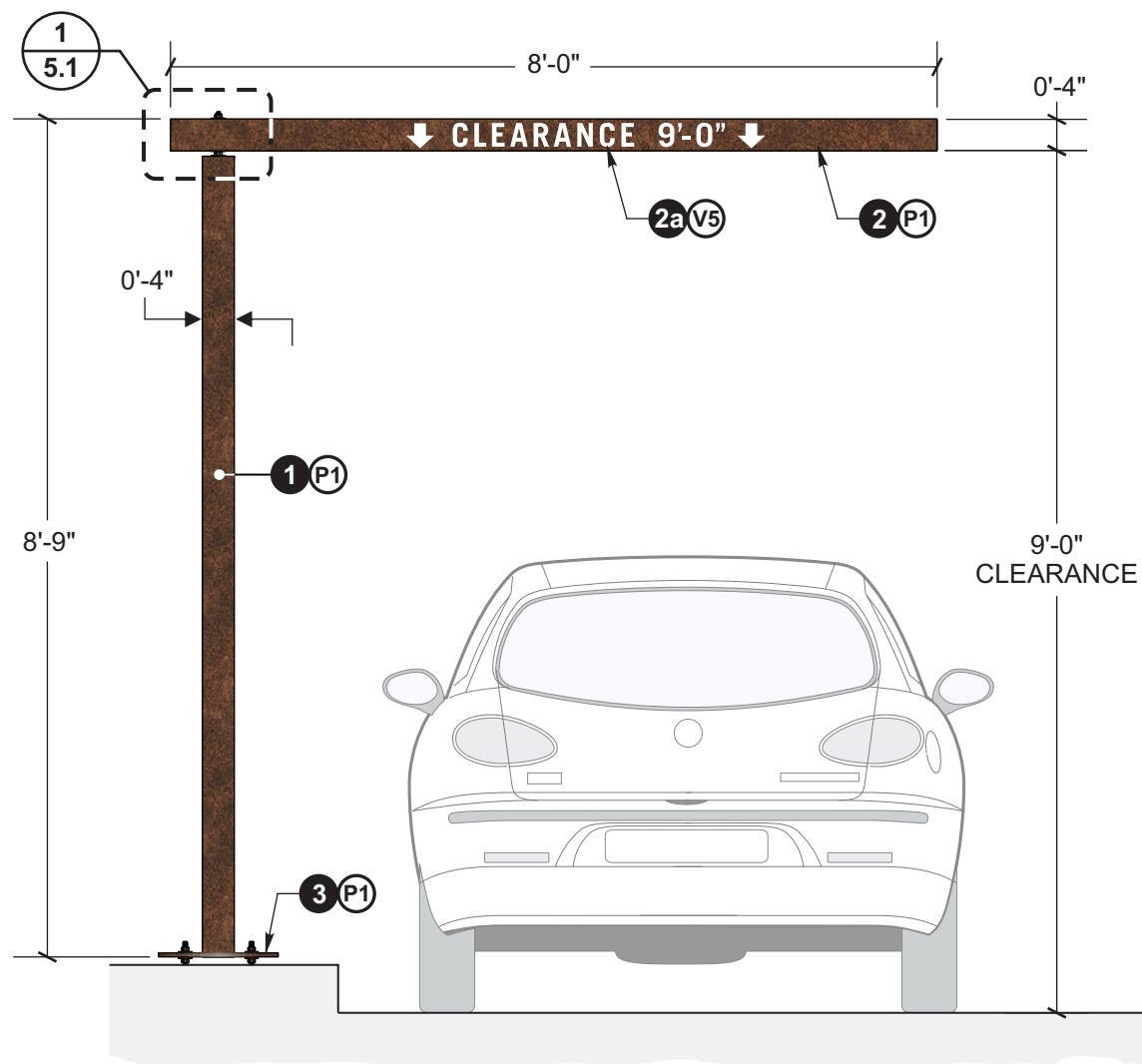
Breakaway: To minimize damage from impact, the top beam will give way and rotate when struck. Beam can then be manually rotated back to original position
Note: Rotation from fixed position will break shear/alignment pin which can be easily serviced during realignment of clearance bar
 - 3 MOUNTING= Slotted 1/2" alum. base plate attaches to embedded bolts in caisson
- CAISSON=** Sonotube formed concrete caisson w/ embedded mounting hardware (four 5/8" All-thread welded to 1/8" steel spacer plates w/ washers and leveling nuts).

COLOR SPECIFICATIONS

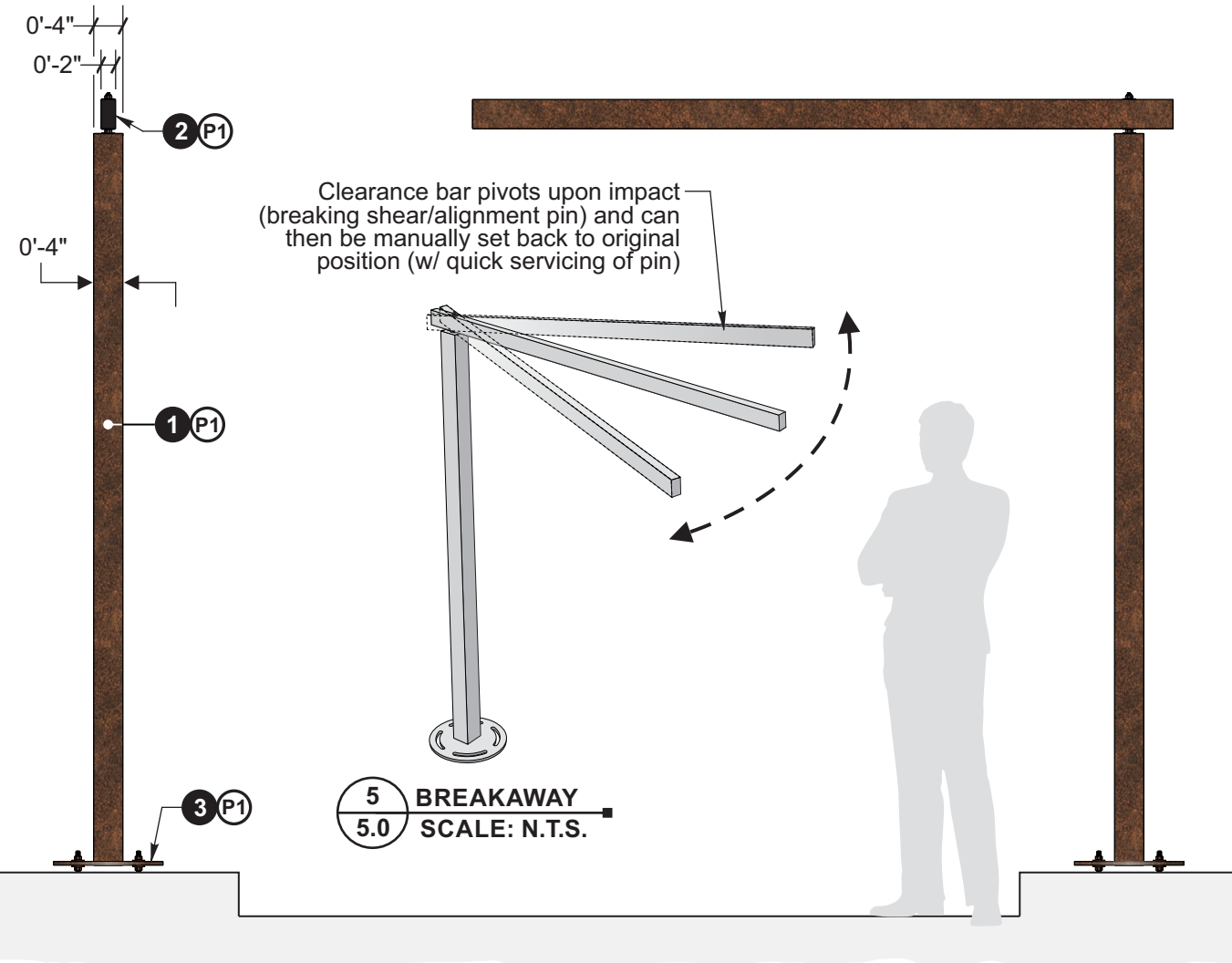
- P1 Powder coat IFS Rustic SRBM 90146
- V5 Reflective White Vinyl



1 PLAN VIEW
5.0 SCALE: 1/2"=1'-0"



2 ELEVATION
5.0 SCALE: 1/2"=1'-0"



3 END VIEW
5.0 SCALE: 1/2"=1'-0"

5 BREAKAWAY
5.0 SCALE: N.T.S.

4 OPPOSITE ELEVATION
5.0 SCALE: 1/2"=1'-0"

Client Approval

Signature _____

Date _____
NOTE: Please ensure all red line changes are noted on this drawing prior to returning it to ADCON. Subsequent to ADCON incorporating the red line changes requested on this drawing, any further changes will result in additional billing at the rate of \$86 per hour.

- Approved
- Approved As Noted
- Revise And Resubmit

Production Mgr. Approval _____ Date _____

Project Mgr. Approval _____ Date _____

Account Mgr. Approval _____ Date _____

P&D Mgr. Approval _____ Date _____

Revision Notes:

PPR2249

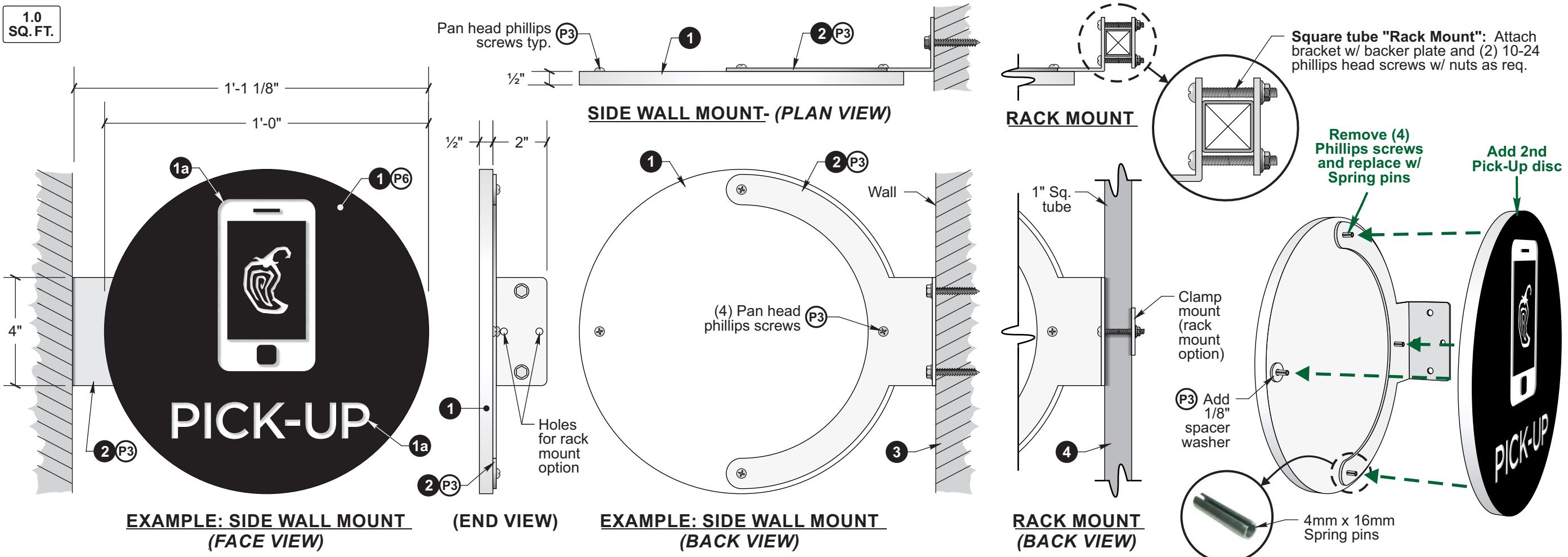
Dot No. _____

W.O. No. **5030**

Rev. No. **A** Date: _____ By: _____

Sheet No. **5.0**

1.0
SQ. FT.



3725 Canal Drive
Fort Collins, CO 80524
970 484 3637
www.adconsigns.com

These documents and plans have been created by and are the exclusive intellectual property of Adcon Inc. Any unauthorized use, disclosure, dissemination or duplication of any of the information contained herein may result in liability under applicable laws.

Design Proposal for:
Chipotle Mexican Grill Falcon
Store # 4612
7565 Falcon Market Place
Falcon, CO 80831
Sign Type: Pick-Up Disc

Date: November 03, 2022
Drawn by: Charles L.
Account Manager: Kristi M.
Project Manager:
File Name: Pick-Up Disc

Client Approval

Signature _____
Date _____
NOTE: Please ensure all red line changes are noted on this drawing prior to returning it to ADCON. Subsequent to ADCON incorporating the red line changes requested on this drawing, any further changes will result in additional billing at the rate of \$86 per hour.

Approved
 Approved As Noted
 Revise And Resubmit

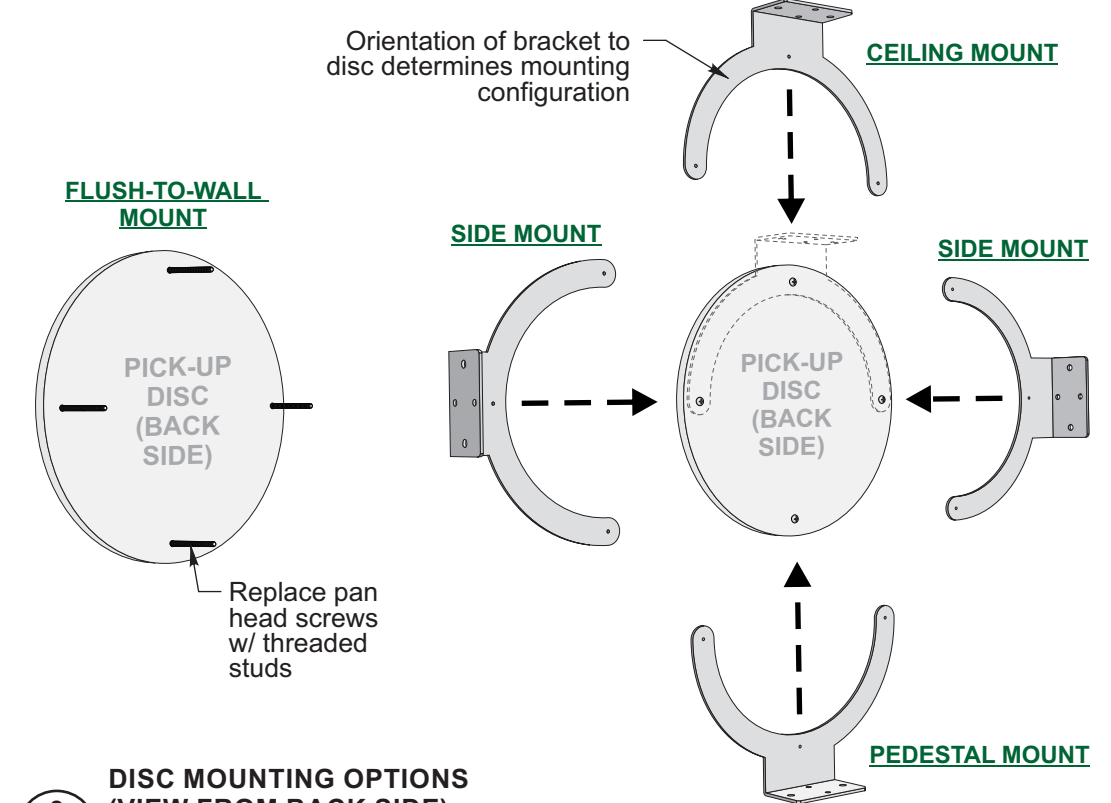
Production Mgr. Approval	Date
Project Mgr. Approval	Date
Account Mgr. Approval	Date
P&D Mgr. Approval	Date

Revision Notes:

Dot No. _____
W.O. No. **5030**
Rev. No. **A** Date: _____
By: _____
Sheet No. **6.0**

1 PICK-UP DISC WITH MOUNTING BRACKET
6.0 SCALE: 3"= 1'-0"

2 DOUBLE FACE CONVERSION
6.0 SCALE: N.T.S.



3 DISC MOUNTING OPTIONS (VIEW FROM BACK SIDE)
6.0 SCALE: N.T.S.

GENERAL SPECIFICATIONS AND OPTIONS FOR: NON-ILLUMINATED INTERIOR DISC PICK-UP SIGNS

- 1** DISC= 1/2" White acrylic (two required for double face version)
Front: Painted face w/ routed graphics
Back: (4) Drilled & tapped mounting holes for 10-32 hardware
NOTE: Back and returns are bare acrylic (unpainted)
- 1a** Pepper Graphic: 1/16" depth (1/32" bit)
"Pick-Up" & Phone Graphic: 1/8" depth (1/8" bit)
- 2** BRACKET= C.A.M. Routed and brake formed 1/8" Aluminum
- 3** MOUNTING= WALL MOUNT OPTION:
Flush-to-wall: Mount disc to wall w/ studs & adhesive
Side/Ceiling/Pedestal Flag Mount: Attach disc to bracket w/ 10-32 pan head screws (or Spring pins for D/F version) Attach bracket to wall w/ #12 fasteners as req.
- 4** MOUNTING= RACK MOUNT OPTION:
Side/Pedestal Flag Mount: Attach disc to bracket w/ 10-32 pan head screws (or Spring pins for D/F version)- Clamp bracket to sq. tube frame of rack using aluminum backing plate and (2) 10-24 phillips head machine screws w/ nuts as req.

COLORS AND FINISHES

- P3** Paint A-N "White" **P6** Paint A-N "Black" **NOTE:** Paint all exposed fasteners to match adjacent finish

ORDER CHECKLIST

1 SIGN QUANTITY _____

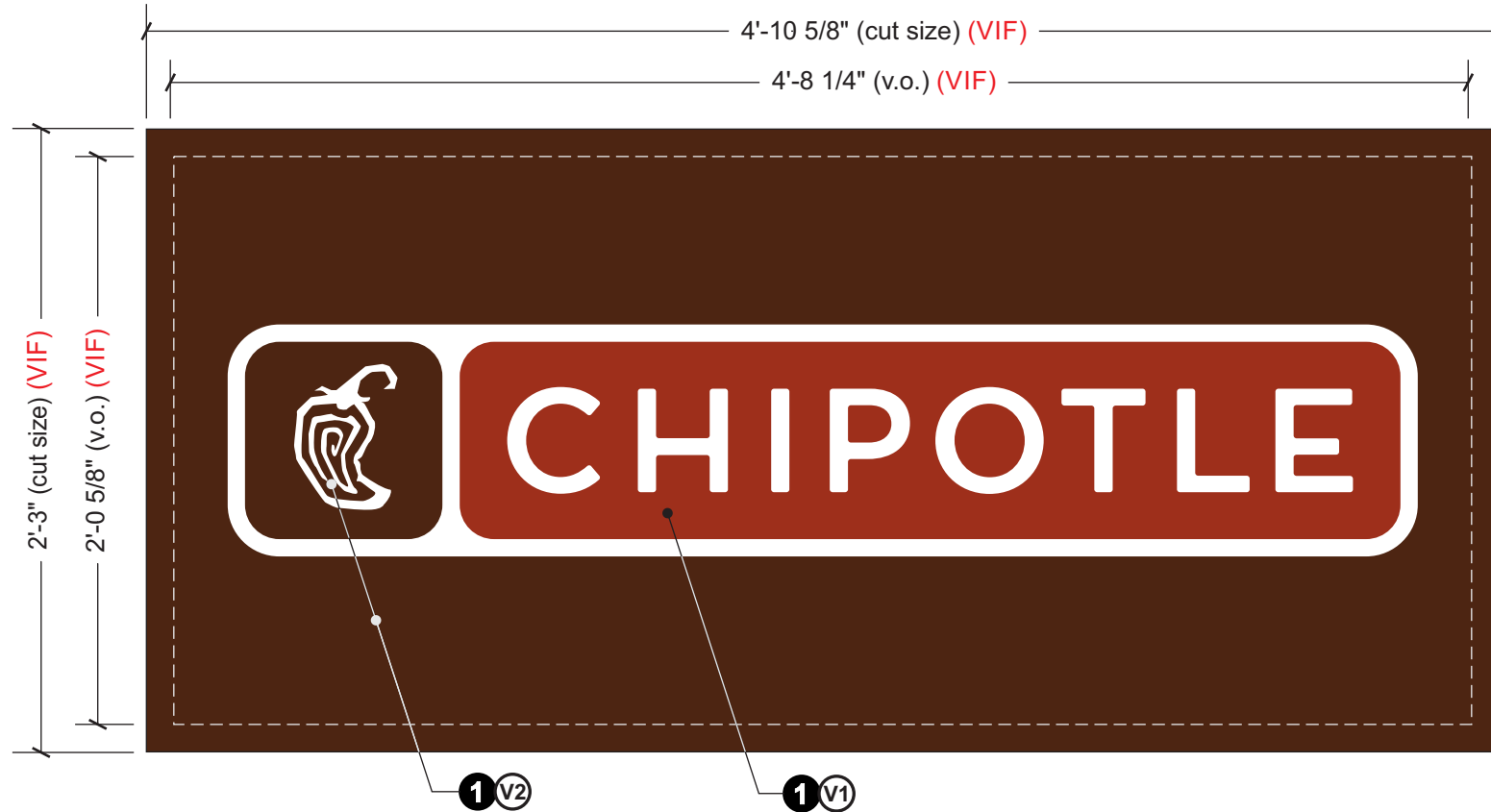
SINGLE FACE
 DOUBLE FACE

FLUSH-TO-WALL MOUNT (no bracket)
 FLAG MOUNT (w/ bracket: side/ceiling/pedestal)

RACK MOUNT (include rack mount hardware kit)

MOPUS SHELF DECALS (Include with order)

9.625
SQ. FT. ea.



1 PANEL FACE ELEVATION
7.0 SCALE: 1 1/2" = 1'-0"

SPECIFICATIONS FOR (4) PYLON TENANT PANELS - (2ea.) PER (2) PYLON LOCATIONS

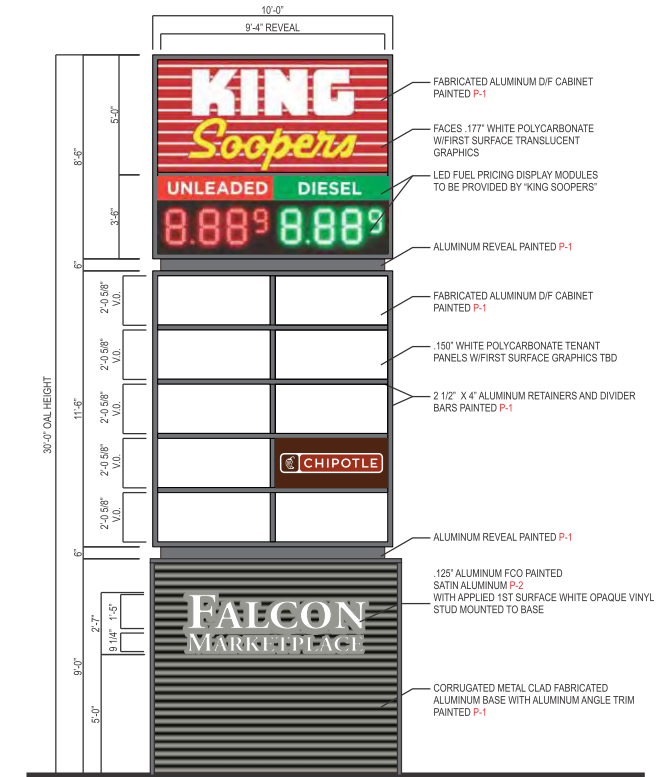
1 FACE TYPE= New .187" (V.I.F.) white acrylic faces. Install in two sides of existing tenant pylons

GRAPHICS= Translucent vinyl graphics, first surface

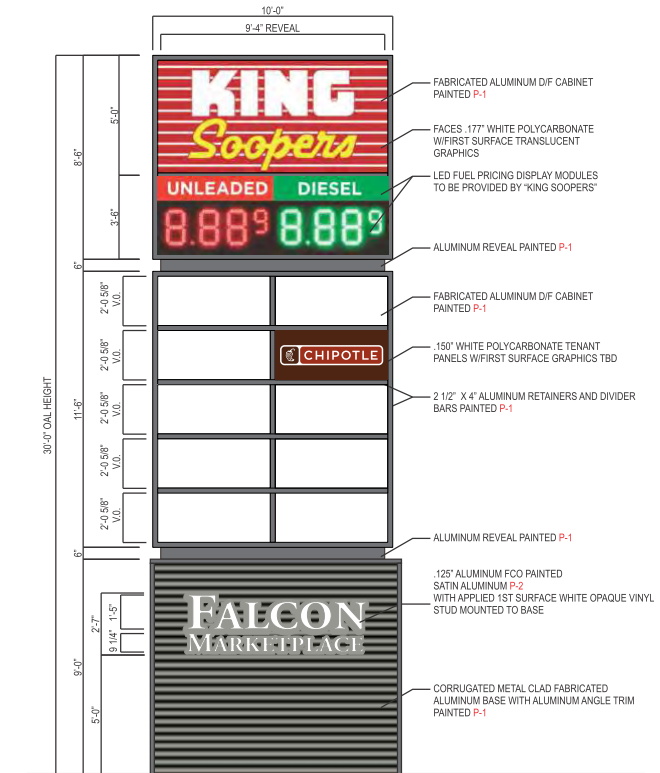
COLOR SPECIFICATIONS

(V1) Arlon cast vinyl #2100-3664 "Roasted Red" graphics

(V2) Arlon cast vinyl #2100-3663 "Adobo Brown" graphics



2 PYLON E1 - PLACEMENT RENDERING (TYP BOTH SIDES)
7.0 LOCATED AT CORNER OF E. WOODMAN & MERIDIAN
SCALE: 1/8" = 1'-0"



3 PYLON E2 - PLACEMENT RENDERING (TYP BOTH SIDES)
7.0 LOCATED DIRECTLY OFF E. WOODMAN
SCALE: 1/8" = 1'-0"

ADCON

3725 Canal Drive
Fort Collins, CO 80524
970 484 3637
www.adconsigns.com

These documents and plans have been created by and are the exclusive intellectual property of Adcon Inc. Any unauthorized use, disclosure, dissemination or duplication of any of the information contained herein may result in liability under applicable laws.

Design Proposal for:
Chipotle Mexican Grill Falcon
Store # 4612
7565 Falcon Market Place
Falcon, CO 80831

Sign Type: _____ Tenant Panels

Date: _____ November 03, 2022
Drawn by: _____ Charles L.
Account Manager: _____ Kristi M.
Project Manager: _____
File Name: _____ Tenant Panels

Client Approval

Signature _____

Date _____

NOTE: Please ensure all red line changes are noted on this drawing prior to returning it to ADCON. Subsequent to ADCON incorporating the red line changes requested on this drawing, any further changes will result in additional billing at the rate of \$86 per hour.

- Approved
- Approved As Noted
- Revise And Resubmit

Production Mgr. Approval _____ Date _____

Project Mgr. Approval _____ Date _____

Account Mgr. Approval _____ Date _____

P&D Mgr. Approval _____ Date _____

Revision Notes:

PPR2249

Quote No. _____

W.O. No. **5030**

Rev. No. **A** Date: _____
By: _____

Sheet No. **7.0**