

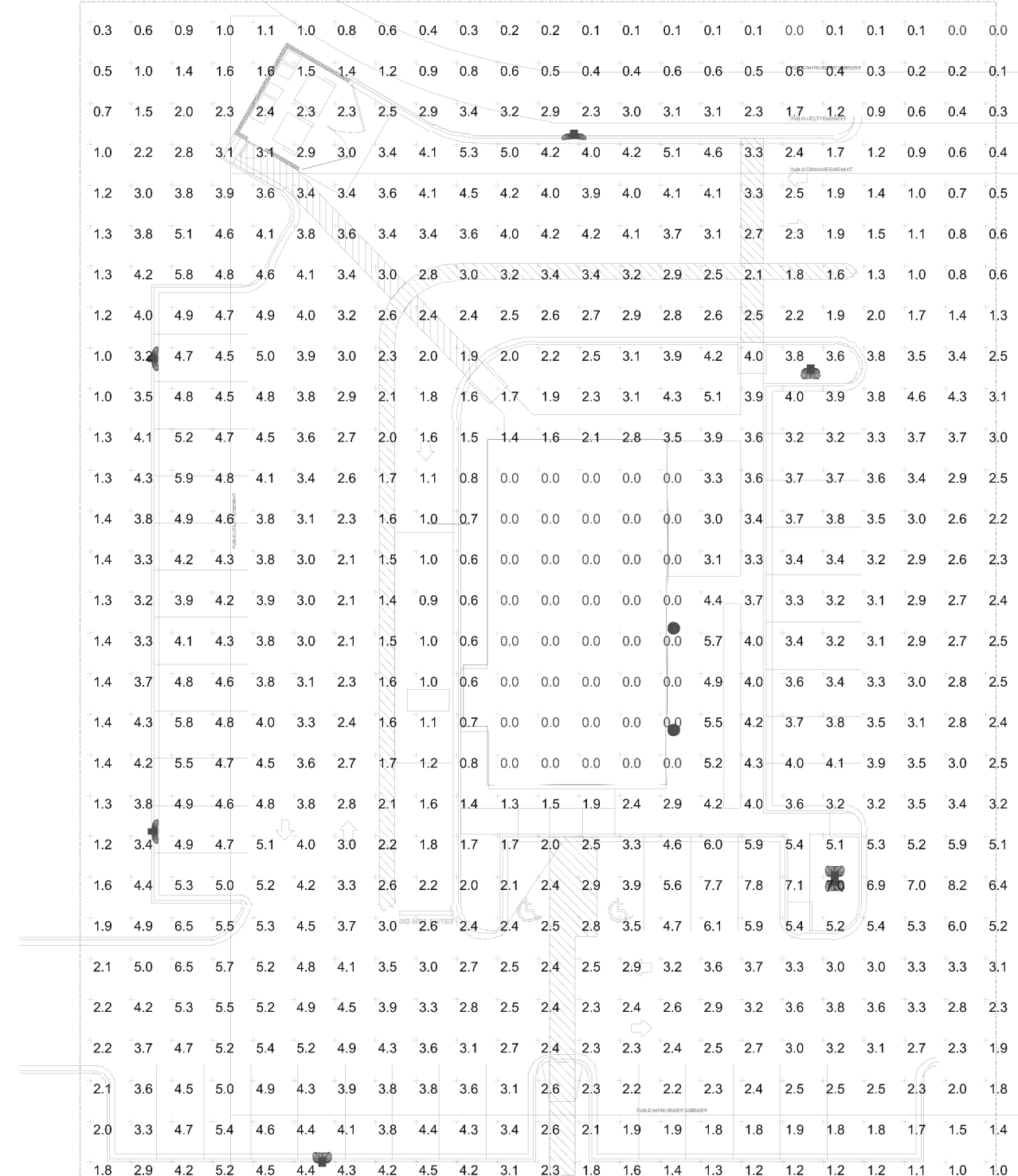
**ELECTRICAL POWER PLAN NOTES**

- NEW POLE LIGHT FIXTURE(S). SEE ARCHITECTURAL DRAWINGS FOR EXACT LOCATION. PROVIDE CONDUCTORS IN NEW CONDUIT TO ABOVE CHIPOTLE'S PANELBOARD LOCATION AS SHOWN ON SHEET E110. SEE DETAIL 2/THIS SHEET AND 9/E710 FOR MORE INFORMATION.
- INSTALL VEHICLE DETECTION LOOP FURNISHED BY TLS PER THE MANUFACTURER'S INSTALLATION INSTRUCTIONS. ALIGN DETECTOR LOOP TO BE CENTERED ON THE PICK-UP WINDOW.
- NOT USED.
- CONNECT DIRECTIONAL SIGN TO CIRCUIT SHOWN THROUGH THE EXTERIOR LIGHTING CONTACTOR PANEL AS SHOWN IN DETAIL 6/E710. SEE DETAIL 2/THIS SHEET FOR SITE CONDUITS.
- PROVIDE EMPTY CONDUIT WITH PULL STRING TO CLEARANCE BAR. SEE DETAIL 2/THIS SHEET FOR SITE CONDUITS.
- NOT USED.
- EXISTING 1" SPARE LOW VOLTAGE CONDUIT. SEE DETAIL 2/THIS SHEET FOR MORE INFORMATION.
- EXISTING 1" SPARE LINE VOLTAGE CONDUIT. SEE DETAIL 2/THIS SHEET FOR MORE INFORMATION.
- EXISTING INTERIOR J-BOXES AT 11'-0" AFF FOR LINE VOLTAGE AND LOW VOLTAGE SITE WIRING. SEE DETAIL 2/THIS SHEET FOR MORE INFORMATION.

**SITE LIGHTING FIXTURE SCHEDULE**

TAG	COUNT	DESCRIPTION	MOUNTING	VOLTAGE	WATTS	FURNISHED BY	INSTALLED BY	BASIS FOR DESIGN			REMARKS
								MANUFACTURER	MODEL	LAMP	
PL1	3	PARKING LOT LIGHT	POLE	120 V	176 W	TLS	GC	COOPER	LUMARK PRV-XL-C75-D-UNV	LED	TYPE III DISTRIBUTION MOUNTED AT 25' - 0" WITH HOUSE SIDE SHIELD
PL2	4	PARKING LOT LIGHT	POLE	120 V	176 W	TLS	GC	COOPER	LUMARK PRV-XL-C75-D-UNV	LED	TYPE IV DISTRIBUTION MOUNTED AT 25' - 0" WITH HOUSE SIDE SHIELD
X6	2	EXTERIOR WALL PACK	WALL	120 V	10 W	TLS	GC	RAB LIGHTING	WPLED10Y	LED	REFER TO ARCHITECTURAL PLANS FOR MOUNTING HEIGHT AND EXACT LOCATION

Please include:  
 -building footprint for all structures  
 -the height of all existing and proposed illuminating devices



**3 SITE PHOTOMETRICS**

Please provide a legend of which lights and their location on the photometric plan  
 -the angle of the cut off or light emission

**GENERAL NOTES:**

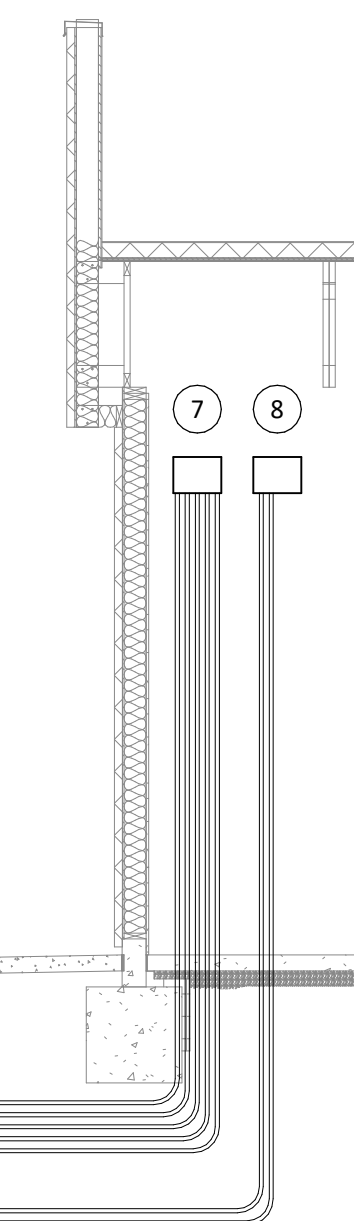
- ALL LIGHTING FIXTURES SHALL BE FULL CUT-OFF OR HAVE SHIELDING TO REDUCE OFF-SITE LIGHTING IMPACTS ONTO ADJACENT PROPERTIES AND ROADWAYS.

**RESPONSIBILITY**

DEVICE OR CONDUIT	CONNECTION OR CONDUCTORS
1	GC
2	GC
3	GC
4	N/A
5	GC
6	GC
7	GC
8	GC
9	GC
10	GC

**GENERAL NOTES**

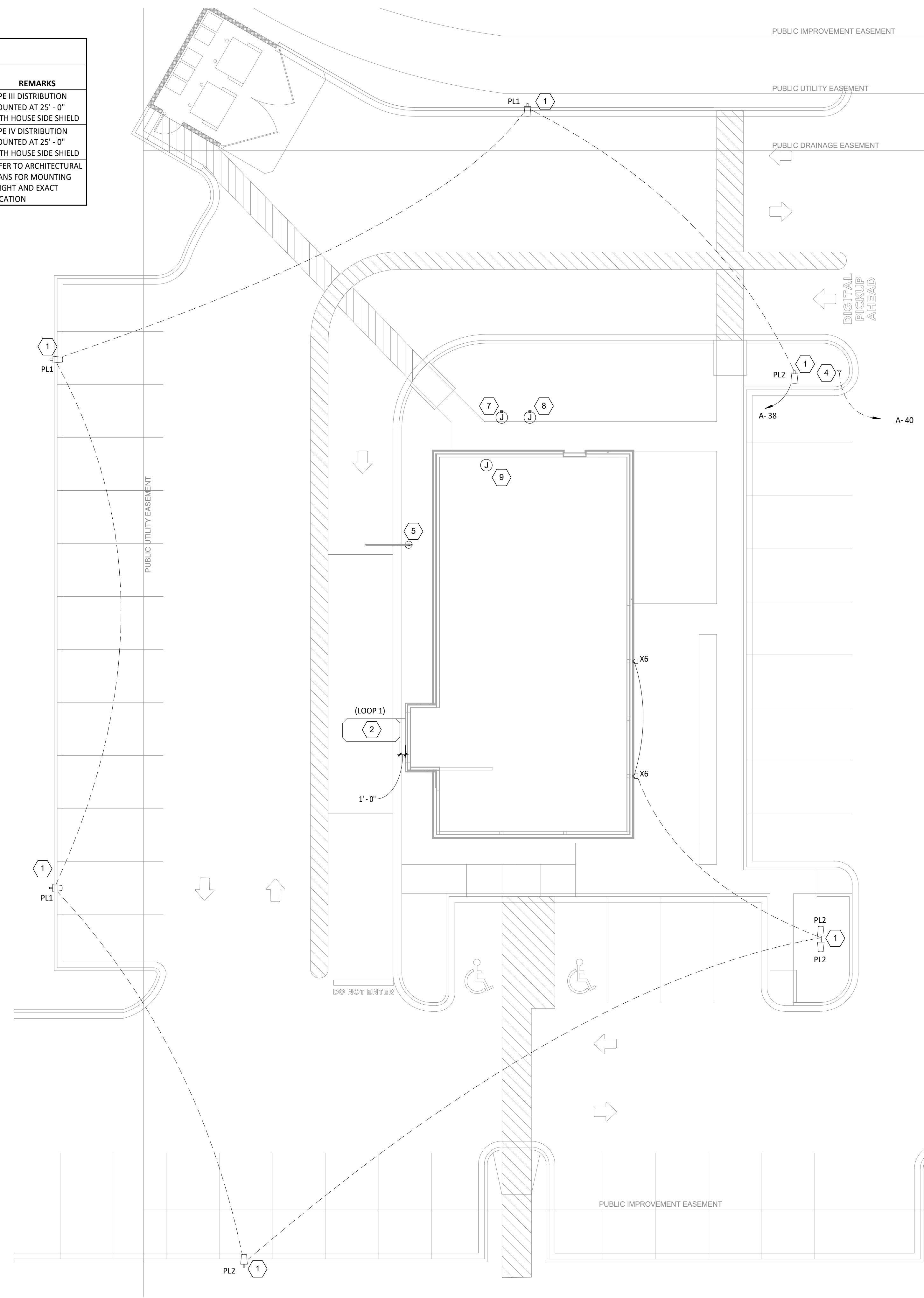
- WORK AND MATERIALS SHALL BE COMPLIANT WITH THE NEC AND REQUIREMENTS OF THE AHJ.
- CONDUCTORS AND CONNECTIONS BELOW GRADE, EVEN WHERE WITHIN CONDUITS OR ENCLOSURES, SHALL BE SUITABLE FOR WET LOCATIONS.
- PROVIDE PULL STRING IN EMPTY CONDUITS.
- SEAL ENDS OF CONDUITS STUBBED UP ABOVE GRADE TO PROTECT FROM THE ELEMENTS.



**4 LIGHT BASE DETAIL**  
 NOT TO SCALE

- VEHICLE DETECTOR LOOP - 6"x4" WITH 4 TURNS (EMX PR-46-XX). VERIFY LENGTH OF LEAD-IN WIRE PRIOR TO ORDERING TO ALLOW WIRE TO REACH VEHICLE DETECTOR WITHOUT SPLICING. SEE SITE PLAN FOR LOCATIONS.
- 1" CONDUIT FROM VEHICLE DETECTOR LOOP LOCATION TO LOW VOLTAGE J-BOX.
- 1" CONDUIT FROM ANNOUNCE SIGN LOCATION TO LINE VOLTAGE J-BOX. SEE SITE PLAN FOR LOCATION.
- 1" CONDUIT FROM CLEARANCE BAR LOCATION TO LINE VOLTAGE J-BOX. SEE SITE PLAN FOR LOCATION.
- 1" CONDUIT FROM SITE DIRECTIONAL SIGNAGE AND/OR MONUMENT SIGN LOCATION(S) TO LINE VOLTAGE J-BOX. SEE SITE PLAN FOR LOCATIONS AND NUMBER OF ROUGH-IN LOCATIONS.
- 1" CONDUIT FROM SITE LIGHTING FIXTURE(S) TO LINE VOLTAGE J-BOX. SITE LIGHTING FIXTURES CAN BE DAISY-CHAINED.
- LINE VOLTAGE J-BOX - MINIMUM 6"x6"x4" J-BOX ON INTERIOR WALL OF BUILDING AT 11'-0" AFF. SEE SITE PLAN FOR LOCATION.
- LOW VOLTAGE J-BOX - MINIMUM 6"x6"x4" J-BOX ON INTERIOR WALL OF BUILDING AT 11'-0" AFF. SEE SITE PLAN FOR LOCATION.
- 1" SPARE CONDUIT FROM LOW VOLTAGE J-BOX TO LANDSCAPING AREA. SEAL CONDUIT FOR FUTURE USE.
- 1" SPARE CONDUIT FROM LINE VOLTAGE J-BOX TO LANDSCAPING AREA. SEAL CONDUIT FOR FUTURE USE.

**2 SITE CONDUIT DETAIL**  
 NOT TO SCALE



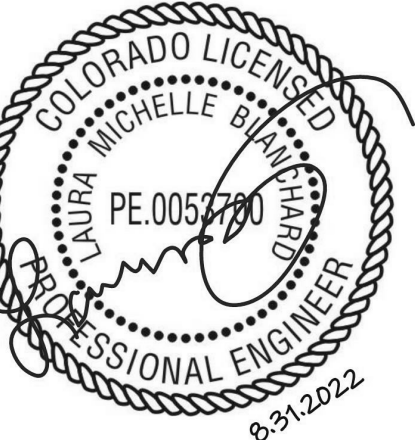
**1 POWER SITE PLAN**  
 3/32" = 1'-0"

Consultant:



Blanchard AE Group

1425 WAKARUSA DR. STE B  
 LAWRENCE, KS 66049  
 PH: 785.993.0300  
 AEGROUP@BAE.GROUP



COPYRIGHT 2022  
 THIS DRAWING IS AN INSTRUMENT OF SERVICE AND AS SUCH REMAINS THE PROPERTY OF CHIPOTLE MEXICAN GRILL, INC. PERMISSION FOR USE OF THIS DOCUMENT IS LIMITED AND CAN BE EXTENDED ONLY BY WRITTEN AGREEMENT WITH CHIPOTLE MEXICAN GRILL, INC.



CHIPOTLE MEXICAN GRILL, INC.  
 PO BOX 182566  
 COLUMBUS, OH 43218-2566  
 TELEPHONE: (614) 318-2400  
 INTERNET: WWW.CHIPOTLE.COM

STORE NO.: 4612  
 FALCON  
 7565 Falcon Market Place,  
 Falcon, CO 80831

Issue Record:  
 08/31/2022 PLANNING SUBMITTAL

Revisions:

Drawn: JJD Checked: AJD

Project No. 221104 Add: PPR2249

Contents:

ELECTRICAL SITE  
 POWER PLAN

E115