



Final Acceptance – Punchlist from DPW Stormwater

Project Name:	Bradley Storage
EDARP Filing Number(s):	PPR-17-011
ESQCP Number:	ESQ1917
Attendees:	DPW: Joshua Augustenborg, Ben Jones, Christina Prete, Glenn Reese, Brad Walters and David Parkerson Developer: Joshua Beggs
Date of Walk-Thru:	January 3, 2023
Walk-Thru Number:	1

Findings to be addressed prior to scheduling a follow-up walk-thru:

- Pond 1 Forebay B: Stress crack adjacent to weir notch needs to be repaired. Reference Photo 1.
- Pond 1 Forebay A: Sediment and debris needs to be cleaned out. Reference Photo 2.
- Pond 1 Forebay A: Stress crack/broken concrete needs to be repaired. Reference Photo 3
- Pond 1 Forebay A: Concrete flume is undercut above forebay and needs to be repaired. Reference Photo 4 and Photo 5.
- Curb behind fence line of Pond 1 Forebay A: Suggest curb be extended to reduce/eliminate future erosion/undercutting of concrete flume. Reference Photo 6.
- Concrete Trickle Channel: Multiple stress cracks need to be repaired, as well as expansion joints need to be properly caulked/sealed. Reference Photo 7.
- Concrete Trickle Channel: Remove sediment and debris throughout channel. Reference Photo 8.
- Pond 1 Embankment: Multiple erosion rills need to be regraded and stabilized. Reference Photo 9 and Photo 10.
- Pond 1 Outlet Structure: Restrictor plate is missing three bolts that need to be replaced. Reference Photo 11.
- Pond 1 Rip Rap Rundowns: Two rip rap rundowns were installed in the field but not shown on the approved plans. Explain field change in the Pond Certification Letter and show locations on the As-Built Drawings. Reference Photo 12 and GEC Plan Sheet 7 of 19.
- Please provide Pond Certification Letter and As-Built Drawings to EPC for review and approval.

Photos:



Photo 1: Pond 1 Forebay B. Stress crack adjacent to weir notch needs to be repaired.



Photo 2: Pond 1 Forebay A. Sediment and debris needs to be cleaned out.



Photo 3: Pond 1 Forebay A. Stress crack/broken concrete needs to be repaired.



Photo 4: Pond 1 Forebay A. Concrete flume is undercut upgradient of Forebay A and needs to be repaired.



Photo 5: Pond 1 Forebay A. Concrete flume is undercut upgradient of Forebay A and needs to be repaired.



Photo 6: Curb behind fence line of Pond 1 Forebay A. Suggest curb be extended to help with erosion/undercutting of concrete flume.



Photo 7: Concrete trickle channel. Multiple stress cracks need to be repaired, as well as expansion joints need to be properly caulked/sealed.



Photo 8: Concrete trickle channel. Clean out sediment and debris throughout channel.



Photo 9: Pond 1 Embankment. Multiple erosion rills need to be regraded and stabilized.



Photo 10: Pond 1 Embankment. Multiple erosion rills need to be regraded and stabilized.



Photo 11: Pond 1 Outlet Structure. Restrictor plate is missing three bolts that need to be replaced.

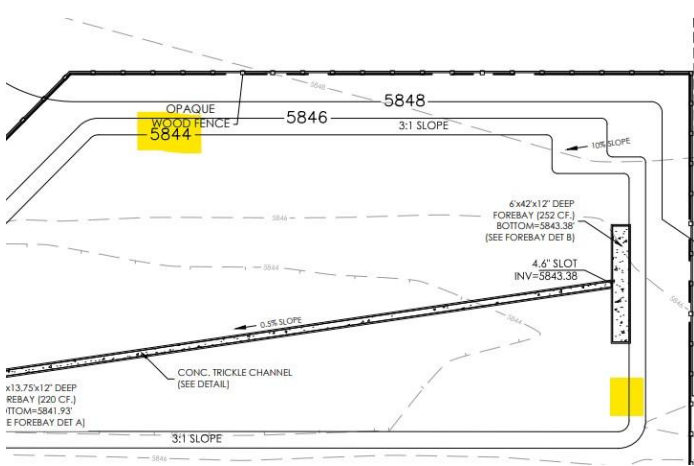


Photo 12: Pond 1 rip rap rundown locations.