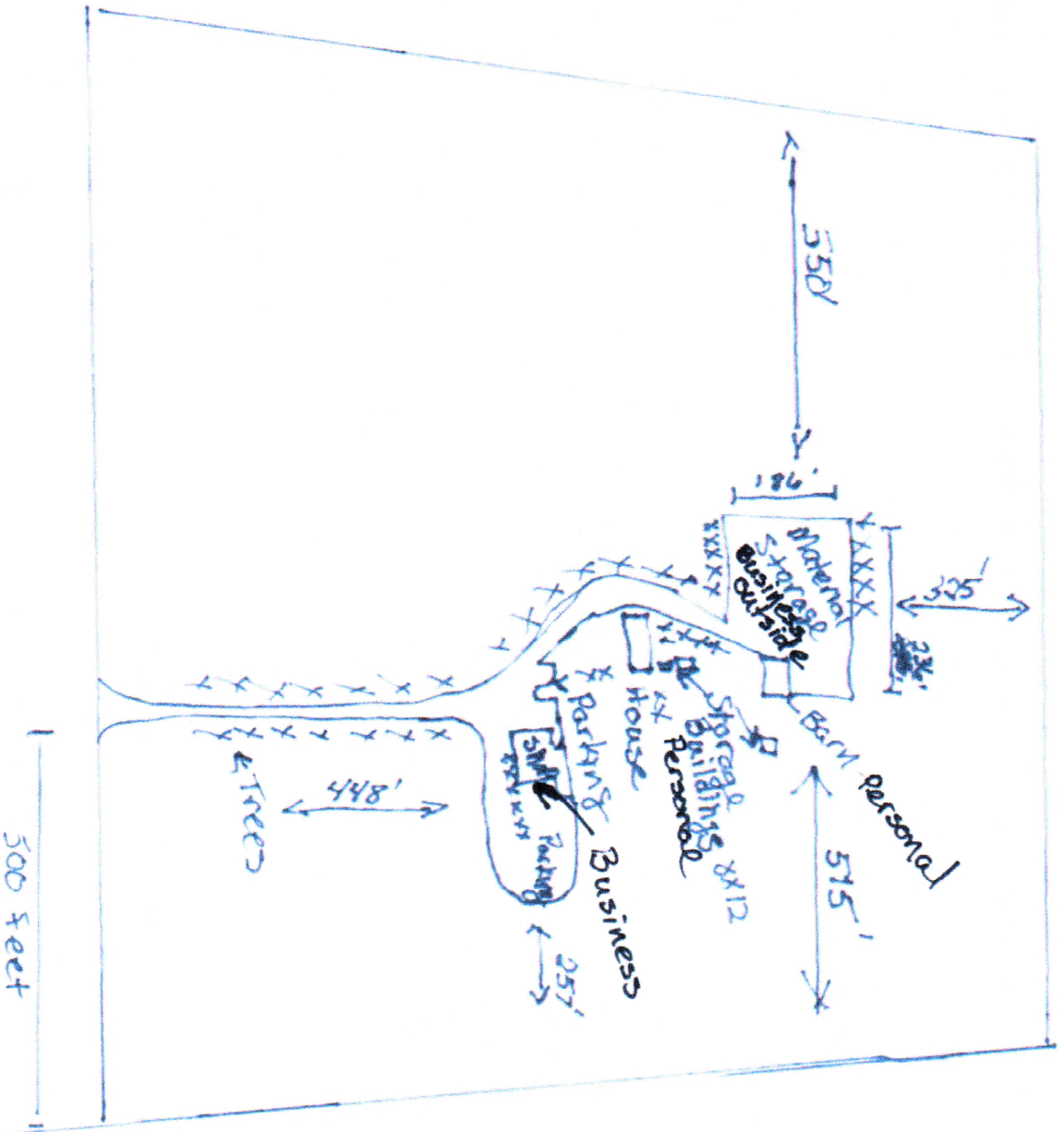


40 Acres
 SE Quarter of SW Quarter of Section 35
 Township 11S Range 64W Except the
 South 30 feet thereof dedicated as a
 Right of way for County Rd



John Olson
 16150 Murphy Rd
 Peyton, CO 80831

Barn 24x36
 Personal
 3 Storage are 8x12
 Personal
 Shop is 40x48 Business
 with a 14x48 addition
 and a 8x12 addition

Parking to the
 East of shop
 is 40x170

Material Storage
 area is 286' x 186'