



CIMARRON HILLS

FIRE PROTECTION DISTRICT

ORGANIZATION PROFILE

A Community Centered People Department



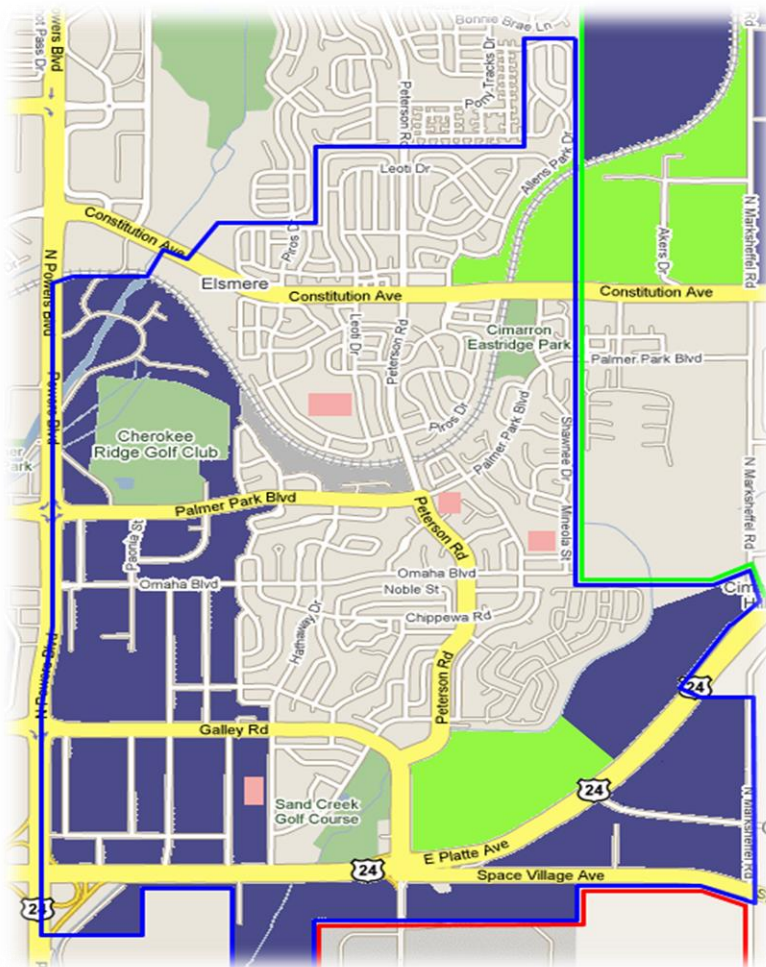
Cimarron Hills Fire Protection District

ORGANIZATION PROFILE

Cimarron Hills Fire Protection District

The Cimarron Hills Fire Protection District was founded in 1972 in an effort to provide timely fire response to the unincorporated subdivision of Cimarron Hills. With our roots established in volunteer service, the District's resources have matured into a career fire department comprised of paid full-time and part-time members with credentials and training that rival larger city departments.

Overseen by a 5 member elected Board, the Cimarron Hills Fire Protection District is dedicated to providing progressive quality emergency and non-emergency services to community members, business owners, and visitors of our neighborhoods. The area served by the Cimarron Hills Fire Protection District encompasses a densely populated and diverse community to include single-family homes, large apartment complexes, a variety of businesses, and a light-industrial warehouse and manufacturing district.



■ Industrial ■ Open Land/Parks ■ Schools



Cimarron Hills Fire Protection District

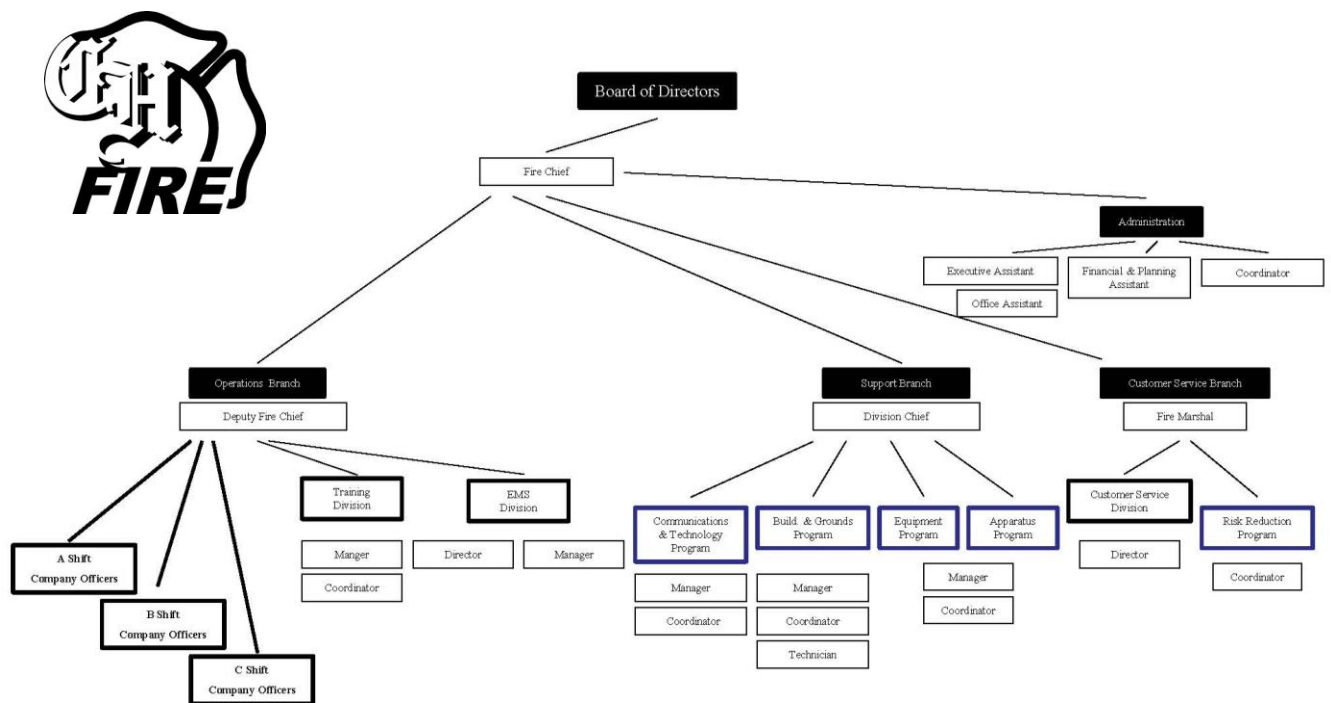
ORGANIZATION PROFILE

The Cimarron Hills Fire Department operates under the philosophy that we serve the people of our community. This is reflected in the organization's **Slogan**,

"A Community Centered People Department." The **Mission** of this great organization is to *honorably serve family, yours and ours, with compassion and professionalism, exceeding expectations with a positive attitude before, during, and after any time of need.*

The Cimarron Hills Fire Department responds out of two facilities serving approximately 20,000 community members in addition to the densely populated commercial portion of the area. The organization responds twenty-four hours a day/seven days a week, through a three-platoon shift system, to a variety of fire incidents such as structure fires, wildland and brush fires, vehicle fires, and much more. In addition, the organization provides Advanced Life Support to the community, heightening the level of quick emergency medical care received. The Cimarron Hills Fire Department also responds to hazardous materials incidents, aircraft incidents, and a variety of emergency and non-emergency needs of our community.

Organizational Structure





Cimarron Hills Fire Protection District

ORGANIZATION PROFILE



CIMARRON HILLS FIRE DEPARTMENT OFFICE OF THE FIRE CHIEF



1835 Tuskegee Place Colorado Springs, CO 80915 719.591.0960 Fax 719.591.0996

Hello and thank you for your interest in the Cimarron Hills Fire Department. We hope that this information will become a valuable resource for you to learn about our organization and the services provided to our community.

The firefighters of the Cimarron Hills Fire Department are proud to be at the center of the Cimarron Hills community's protection by providing emergency and non-emergency services daily. The Cimarron Hills Fire Department is proud to adopt the slogan, *A Community Centered People Department*. This concept is embraced by our members and leadership, as we are dedicated to providing services of all types to the great members and visitors of our community.

I invite you to stop by any of our facilities to visit and ask questions. Thank you for your time and support of this fabulous team dedicated to your protection.

Steve Conner
Acting Fire Chief
Cimarron Hills Fire Department



A Community Centered People Department





Personnel

The Cimarron Hills Fire Department incorporates a variety of positions to achieve the mission of serving our community in any time of need. Below is our standard staffing compliment. This compliment includes a variety of operational, command staff, and administrative positions. In addition, community support positions provide additional enhanced services to the Cimarron Hills Community through a wide range of programs aimed at preventing fire and other emergencies, reducing risk, and ensuring that each individual in the community is cared for in any time of need.

Firefighters	(RSV)	4-6
	(PT)	8-10
	(FTE)	3
Paramedic-Firefighters	(PT)	1-2
	(FTE)	3
Driver Engineers	(PT)	1-2
	(FTE)	3
Lieutenants	(FTE)	3
Captain	(FTE)	1
Support Staff	(VOL)	2
	(PT)	4
	(FTE)	2
Division Chief	(PT)	1
Deputy Fire Chief	(FTE)	1
Fire Chief	(FTE)	1
Total Personnel		37-44

FTE = Full Time Equivalent Employee, PT = Part-Time Employee, RSV= Reserve, VOL = Support Volunteer





Emergency Response

The Cimarron Hills Fire Department operates many pieces of apparatus and resource types in order to provide a variety of services to the community. The Cimarron Hills Fire Department is one of few organizations within El Paso County that responds with a full service Ladder Truck to incidents. This includes the capability for specialty rescue equipment, enhanced vehicle extrication, and the equipment and trained personnel to service both residential and large commercial properties.

In addition, the Cimarron Hills Fire Department deploys a Medical Squad or Engine Company with Advanced Life Support capabilities to medical incidents. The organization also has wildland firefighting capabilities and incident command resources, among many others.





Divisions and Programs

The Cimarron Hills Fire Department is divided into a series of branches, divisions and programs to organize daily operations and administration, working seamlessly together to achieve the organization's operational and administrative goals. These branches include the Operations Branch, Support Branch, and the Community Services Branch.

The Operations Branch manages all operational aspects of the organization, to include all operational fire companies as well as Training and Emergency Medical Services (EMS).

The Support Branch manages all components that support the operations of the organization, to include Apparatus, Equipment, Communications & Technology and Buildings & Grounds.

The Cimarron Hills Community Services Branch provides educational programs to the community, coordinates community events, and includes the Community Assistance Officer Program which focuses on making sure our community is taken care of after an emergency event. In addition, this branch manages risk reduction measures in the community such as code enforcement, pre-fire planning and fire prevention property inspections.

The Administration manages everything from payroll and payables to budgeting and forecasting finances many years in advance. The Fire Chief works with the Board of Directors, administrative staff, legal counsel, bookkeepers, and fire department officers to manage administrative functions. The administration provides support to all Cimarron Hills programs and divisions through document and policy management, benefits administration, purchasing processes, and budgeting. The administration also serves as the organization's human resources department, risk management coordination, and strategic planning section, along with statistical analysis and data coordination.





Cimarron Hills Fire Protection District

ORGANIZATION PROFILE

**For further information, please contact us
or visit us on the web**

www.cimarronhillsfire.org

**Cimarron Hills Fire Protection District
Headquarters and Training Facility**

**1835 Tuskegee Place
Colorado Springs, Colorado 80915**

719-591-0960



<https://www.facebook.com/Cimarron-Hills-Fire-Department-221977201211914>



@CimHillsFD





CIMARRON HILLS FIRE DEPARTMENT

1835 Tuskegee Place

Colorado Springs, CO 80915

719.591.0960

Fax 719.591.0996

Fire Prevention Division Commitment Letter

June 4, 2020

RE:

1111 Meadowbrook Parkway
Commercial Structure
Parcel # 54081-01-054

Amy Burton,

The Cimarron Hills Fire Protection District (CHFPD) will review the proposed development once submitted to Regional Building Department. The future development will be located in the Fire District at Claremont Business Park (1111 Meadowbrook Parkway). We acknowledge that the intended/anticipated use of the property is commercial.

We will provide emergency services from our full-time staffed facilities, the closest located at 1885 Peterson Road. This is approximately 3 miles away with a response time of 5 minutes.

Our services will include emergency and non-emergency response, public education, code compliance and plan review. We sincerely look forward to providing our services to this new facility.

If you have any questions or need any other information, please don't hesitate to contact the Cimarron Hills Fire Prevention Division.

Sincerely,

John (J.T.) McLeod
Division Chief of Fire Prevention
Fire Inspector III-Plans Examiner
719-591-0960
jmcleod@cimarronhillsfire.org

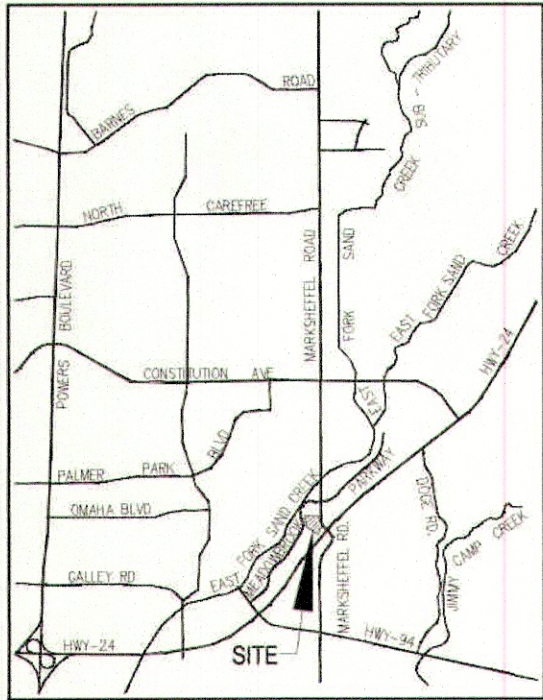
WATER AND SANITARY SEWER SERVICE INSTALLATIONS
GENERAL NOTES:

- ALL MATERIALS AND WORKMANSHIP SHALL BE IN CONFORMANCE WITH THE CHEROKEE METROPOLITAN DISTRICT STANDARDS AND THE CITY OF COLORADO SPRINGS CONSTRUCTION STANDARDS UNLESS OTHERWISE NOTED. IN THE EVENT OF CONFLICTING STANDARDS CHEROKEE METROPOLITAN DISTRICT STANDARDS SHALL GOVERN.
- ALL WATER SYSTEM MAINS PIPE MATERIAL SHALL BE POLYVINYL CHLORIDE (PVC) CLASS 200 (DR-14) PER AWWA C-900 AND ASTM D241 SPECIFICATIONS, EXCEPT WHERE NOTED. SPECIFICALLY, SECTIONS OF WATER PIPE THAT CROSS UNDER MAJOR DRAINAGE WAYS (SAND CREEK) OR MAJOR THOROUGHFARES SHALL BE DUCTILE IRON PIPE.
- ALL FITTINGS SHALL BE CONSTRUCTED OF GRAY-IRON MATERIAL AND FURNISHED WITH MECHANICAL JOINT ENDS. ALL FITTINGS SHALL HAVE A MINIMUM PRESSURE RATING OF 250 PSI AND SHALL BE WRAPPED WITH A 9-MIL THICKNESS POLYETHYLENE MATERIAL PER AWWA STANDARD C105.
- ALL WATER PIPES SHALL BE INSTALLED AT A MINIMUM DEPTH OF FIVE (5) FEET BELOW FINISHED GRADE.
- ALL BENDS, TEES, FIRE HYDRANTS, BLOW-OFF, AND PLUGS AT DEAD END MAINS SHALL BE INSTALLED WITH CONCRETE THRUST BLOCKS.
- VALVE BOXES SHALL BE TYLER SUP; TYPE "C" CAST IRON VALVE BOX ASSEMBLY SERIES 6860 WITH NO. 160 OVAL BASE OR APPROVED EQUAL.
- ALL WATER SYSTEM COMPONENTS SHALL BE FLUSHED AND CHLORINATED PER AWWA C-601, "DISINFECTING WATER MAINS" PRIOR TO ACCEPTANCE. THE CONTRACTOR SHALL PRODUCE A 25 MG/L SOLUTION BY ADHERING CHLORINE TABLETS TO THE PIPE SECTION WITH PERMATEX CLEAR TRV INSIDE THE SYSTEM. CHLORINATION SHALL OCCUR PRIOR TO HYDROSTATIC TESTING. THE CONTRACTOR SHALL OBTAIN A BACTERIOLOGICAL SAMPLE AFTER THE SYSTEM HAS BEEN FLUSHED. A CLEAN BACTERIOLOGICAL SAMPLE MUST BE OBTAINED PRIOR TO THE SYSTEM BEING PLACED INTO SERVICE.
- HYDROSTATIC TESTING: ALL WATER SYSTEM MAINS SHALL BE FILED PRESSURE TESTED TO A MINIMUM OF 150 PSI OR 1 1/2 TIMES THE STATIC OPERATING PRESSURE, WHICHEVER IS GREATER. MAXIMUM ALLOWABLE LEAKAGE FOR EACH SECTION OF PIPE BETWEEN LINE VALVES SHALL NOT EXCEED THE FOLLOWING: *10 GALLONS PER INCH OF PIPE DIAMETER PER MILE PER DAY.
- ALL VALVES SHALL CONFORM TO OPEN LEFT CONVENTION PER CHEROKEE METROPOLITAN DISTRICT STANDARDS.
- WHEN IT IS NECESSARY TO RAISE OR LOWER WATER MAINS AT OTHER UTILITY CROSSINGS THE CONTRACTOR SHALL INSURE A MINIMUM CLEARANCE OF 18" WHERE POSSIBLE BETWEEN THE OUTSIDE DIAMETERS OF PIPES.
- WHILE CONSTRUCTING THE WATER AND WASTE WATER SYSTEM THE CONTRACTOR SHALL HAVE IN HIS POSSESSION AT LEAST ONE APPROVED FOR CONSTRUCTION SET OF UPDATED PLANS AT ALL TIMES. APPROVED FIELD MODIFICATIONS TO THE PLAN SETS SHALL BE CLEARLY IDENTIFIED IN RED INK ON THE PLANS BY THE CONTRACTOR PER FIELD CONSTRUCTION. THESE AS-BUILT CHANGES SHALL BE DATED AND SUBMITTED TO THE ENGINEER OF RECORD. THE ENGINEER OF RECORD SHALL PREPARE A COMPLETE SET OF "AS CONSTRUCTED" DRAWINGS AND DELIVER THE SETS TO THE CHEROKEE METROPOLITAN DISTRICT PRIOR TO FINAL ACCEPTANCE OF THE WATER SYSTEM.
- PRIOR TO TAPPING ANY EXISTING WATER MAIN THE CONTRACTOR SHALL SUBMIT AND RECEIVE APPROVAL FOR SAID TAP IN ACCORDANCE WITH THE CHEROKEE METROPOLITAN DISTRICT STANDARDS.
- ALL NONMETALLIC PIPES SHALL HAVE TRACER WIRE ATTACHED TO ITS TOP DURING CONSTRUCTION. THE TRACER WIRE SHALL BE #12 AWG INSULATED COPPER WIRE WITH NO. 12 COPPER CONNECTIONS AND SHALL BE PERMANENTLY AFFIXED TO THE TOP OF THE PIPE USING TAPE AT 4' INTERVALS. TRACER WIRE SHALL BE JOINED 3-WAY OR 4-WAY LOCKABLE MECHANICAL CONNECTORS SPECIFICALLY MANUFACTURED FOR USE IN UNDERGROUND TRACER WIRE INSTALLATIONS. NON-LOCKING FRICTION FIT, TWIST-ON, OR TAPED CONNECTIONS ARE NOT PERMITTED. THE TRACER WIRE SHALL ALSO BE CORROSION BY EPOXY OR SILICON COATING. ROUTE TRACER WIRES TO SURFACE AT ALL VALVE BOXES.
- THE CONTRACTOR ASSUMES RESPONSIBILITY FOR THE PROTECTION OF ALL UTILITIES DURING THE WORK. PRIOR TO EXCAVATION, CONTACT THE UTILITY NOTIFICATION CENTER OF COLORADO AT (800) 922-1987 AT LEAST TWO WORKING DAYS PRIOR TO DIGGING.
- SANITARY SEWER PIPE SHALL CONFORM TO ASTM D3034 SDR35 PVC.
- CONTRACTOR SHALL FIELD VERIFY LOCATION AND ELEVATION OF EXISTING INVERTS PRIOR TO INSTALLATION OF NEW SANITARY SEWER SYSTEM.
- ALL SANITARY SEWER MANHOLES, LIDS, BASES AND OTHER APPURTENANCES SHALL BE IN ACCORDANCE WITH CHEROKEE METROPOLITAN DISTRICT STANDARD MANHOLE DETAILS (5' MIN DIAMETER), EXCEPT AS NOTED ON THESE PLANS. WHERE REQUIRED ON THESE PLANS, WATER TIGHT MANHOLES, LIDS AND CONNECTIONS SHALL BE PROVIDED BY COLORADO SPRINGS STANDARDS.
- SANITARY SEWER SERVICE LINES SHALL BE LOCATED PER THE DETAIL ON THE UTILITY SERVICE PLAN, OR AT THE DIRECTION OF THE INSPECTOR.
- OVERLOT GRADING AND STREET SUB-GRADE MUST BE WITHIN +/- ONE (1) FOOT PRIOR TO ANY UTILITY INSTALLATION.
- TRACER WIRE IS TO BE INSTALLED WITH ALL SANITARY SEWER MAIN LINES AND SERVICES (FROM THE MAIN LINE TO THE BUILDING STRUCTURE), AS OUTLINED IN COMMENT #13.
- MINIMUM DEPTH OF SANITARY SEWER IS 6 FEET OF COVER. IF THIS MINIMUM CANNOT BE ACHIEVED DUE TO SHALLOW SEWER STUB THEN THE FOLLOWING APPLIES: OTHERWISE THE SEWER SERVICE MUST HAVE 6 FEET OF COVER:
DEPTH GREATER THAN 6 FEET: MATERIAL TYPE SDR 35
DEPTH BETWEEN 4 FEET AND 6 FEET: MATERIAL TYPE SCH 40 OR CAST IRON (CIP)
DEPTH LESS THAN 4 FEET: MATERIAL TYPE SCH 40 OR CIP WITH CONCRETE CAP.
- WATER SERVICE MUST BE OVER THE SEWER AT ALL TIMES (MINIMUM 18" INCHES) OTHERWISE STEEL CASING MUST BE USED. SEWER SERVICE PIPE LOCATED WITHIN ONE FOOT OF THE WATER SERVICE LINE MUST BE CONSTRUCTED WITH SCH 40 PIPE OR CIP.
- ALL EXTERIOR SEWER CLEAN OUTS (CO) MUST HAVE A CAST IRON, TRAFFIC RATED COVER, OR EQUIVALENT CONCRETE COLLAR.
- UPON COMPLETION OF CONSTRUCTION AND PRIOR TO ACCEPTANCE BY THE DISTRICT, TWO (2) COPIES OF "AS-CONSTRUCTED" PLANS AND TWO (2) SETS OF ELECTRONIC DATA FILES OF THE PLANS SHALL BE SUBMITTED TO THE DISTRICT FOR RECORD.
 - THE TWO (2) COPIES SHALL BE COMPLETE WITH ALL "AS-CONSTRUCTED" INFORMATION TOGETHER WITH A CERTIFICATION BY THE PARTY RESPONSIBLE FOR CONSTRUCTION THAT ALL DATA THEREON IS ACCURATE AND REPRESENTS ACTUAL CONSTRUCTED CONDITIONS.
 - THE TWO PLAN SETS SHALL BE SUBMITTED ON SHEETS THAT ARE 24" X 36" IN SIZE.
 - THE PLAN SET SHALL BE ON A DURABLE MEDIA THAT CAN BE RUN THROUGH PHOTOCOPYING EQUIPMENT.
 - THE TWO ELECTRONIC DATA FORMATS SHALL BE SUBMITTED. THE FIRST ELECTRONIC DATA FILE SET SHALL BE IN AUTOCAD 2006 OR NEWER FORMAT WITH NO EXTERNAL REFERENCE DRAWINGS. ALL EXTERNAL REFERENCES MUST BE BOUND INTO THE DRAWING SET. THE SECOND SET OF ELECTRONIC DATA FILES SHALL BE IN ADOBE ADOBE ACROBAT PDF FORMAT.
 - "AS-CONSTRUCTED" PLANS SHALL BE SUBMITTED WITHIN TWO WEEKS OF COMPLETION OF THE WATER AND/OR SANITARY SEWER UTILITIES.
 - NO AUTHORIZATION TO CONNECT TO THE SYSTEM OR DISCHARGE TO THE SYSTEM WILL BE ALLOWED UNTIL THE "AS-CONSTRUCTED" DOCUMENTS HAVE BEEN RECEIVED AND ACCEPTED BY THE DISTRICT.
 - ALL PLANS, SPECIFICATIONS AND SUPPORTING DOCUMENTS SHALL BE PREPARED BY OR UNDER THE DIRECT SUPERVISION OF A PROFESSIONAL ENGINEER LICENSED TO PRACTICE IN THE STATE OF COLORADO. ALL PLANS AND SPECIFICATIONS SHALL BEAR THE SEAL AND SIGNATURE OF SAID LICENSED PROFESSIONAL ENGINEER.

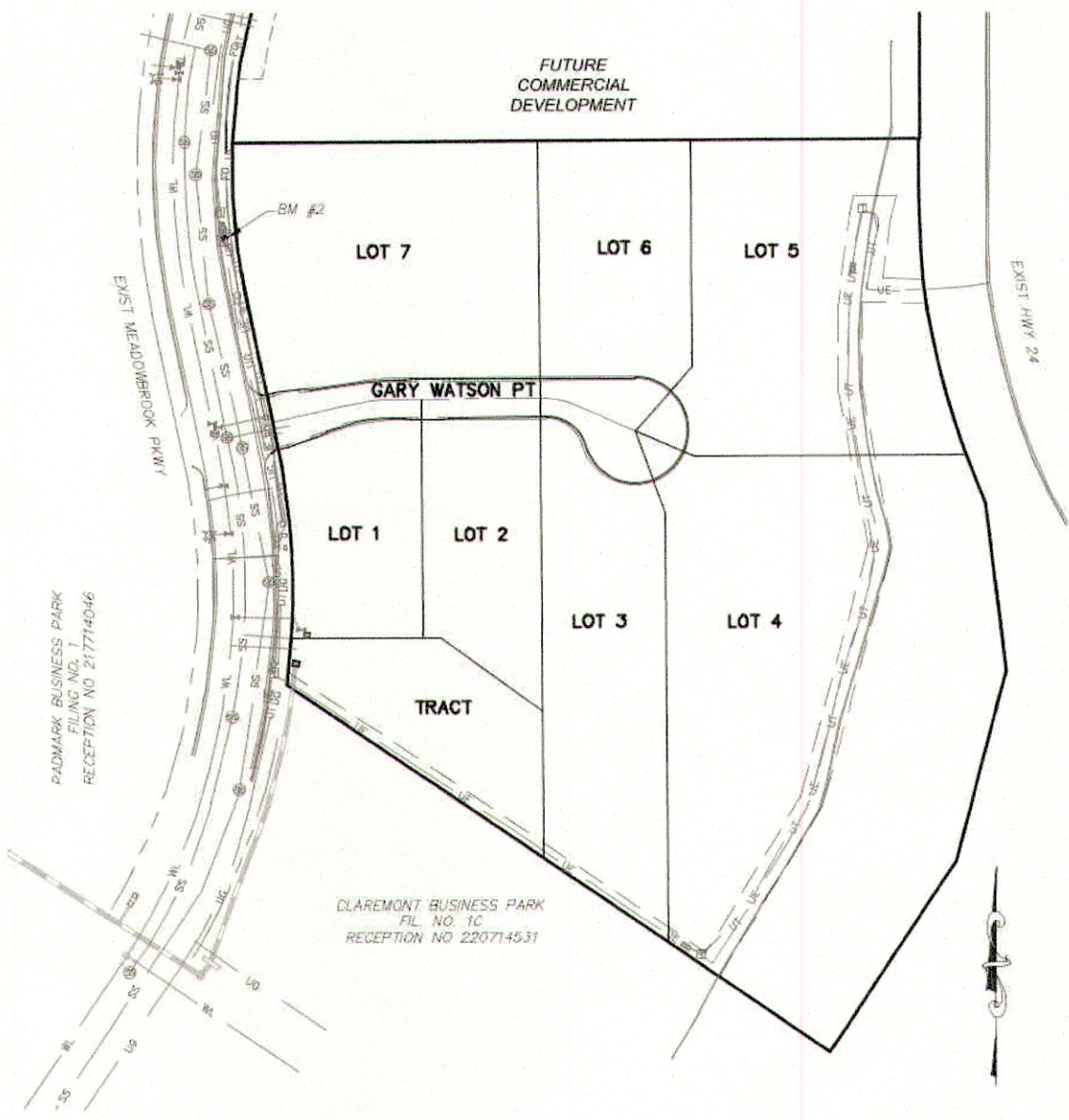
CLAREMONT BUSINESS PARK 2 FILING NO. 1

COUNTY OF EL PASO, STATE OF COLORADO
SANITARY SEWER PLAN
(INCLUDING UTILITY SERVICE PLAN)

AUGUST 2020



VICINITY MAP
N.T.S.



SITE MAP
N.T.S.

CONTACTS

OWNER	HAMMERS CONSTRUCTION INC. 1411 WOOLSEY HEIGHTS COLORADO SPRINGS, CO 80915 719-570-1599
CIVIL ENGINEER	MS CIVIL CONSULTANTS, INC. 20 BOULDER CRESCENT, ST 110 COLORADO SPRINGS, CO 80903 VIRGIL A. SANCHEZ, P.E. 719-491-0818
WATER AND WASTEWATER	CHEROKEE METROPOLITAN DISTRICT 6050 PALMER PARK BOULEVARD COLORADO SPRINGS, CO 80915-1721 JEFF MUNGER 719-597-5080
FIRE DEPARTMENT	CHAMPION HILLS FIRE DEPARTMENT 1835 TUSSENGE PLACE COLORADO SPRINGS, CO 80915 719-591-0960
TELEPHONE COMPANY	U.S. WEST COMMUNICATIONS (LOCATORS) 800-922-1987 AT&T (LOCATORS) 719-635-3674

ENGINEER'S STATEMENT

THESE DETAILED PLANS AND SPECIFICATIONS WERE PREPARED UNDER MY DIRECTION AND SUPERVISION AND IS CORRECT TO THE BEST OF MY KNOWLEDGE AND BELIEF. SAID PLANS HAVE BEEN PREPARED ACCORDING TO THE CRITERIA ESTABLISHED BY THE CHEROKEE METROPOLITAN DISTRICT. I ACCEPT RESPONSIBILITY FOR ANY LIABILITY CAUSED BY NEGLIGENCE, ACTS, ERRORS OR OMISSIONS ON MY PART IN PREPARING THIS REPORT.



VIRGIL A. SANCHEZ, COLORADO P.E. #37160
FOR AND ON BEHALF OF M & S CIVIL CONSULTANTS, INC. DATE

CHEROKEE METROPOLITAN DISTRICT
WASTE WATER PLAN APPROVAL

THE CHEROKEE METROPOLITAN DISTRICT RECOGNIZES THE DESIGN PROFESSIONAL OF RECORD AS THE LICENSED ENGINEER HAVING RESPONSIBILITY FOR THE SUBMITTED DESIGN AND THE DISTRICT HAS LIMITED ITS SCOPE OF REVIEW ACCORDINGLY. AS SUCH, THE APPROVAL GRANTED HEREIN IS FOR THE CONSTRUCTION OF THE FACILITIES AS REPRESENTED ON THESE DOCUMENTS. APPROVAL EXPIRES ONE (1) YEAR FROM THE DATE BELOW AND RESUBMITTAL OF THESE PLANS FOR REVIEW AND APPROVAL IS REQUIRED IF CONSTRUCTION DOES NOT BEGIN DURING THIS PERIOD.

APPROVED BY: *[Signature]* 08/05/2020
DATE

BASIS OF BEARINGS

BASIS OF BEARINGS: THE CHORD OF THE WESTERLY LINE OF LOT 2, "CLAREMONT BUSINESS PARK FILING NO. 1A" UNDER RECEPTION NO. 208712398, BEING MONUMENTED AT THE SOUTHERLY END WITH A NAIL AND WASHER, PLS NO ILLEGIBLE, AND AT THE NORTHERLY END WITH A REBAR AND ALUMINUM CAP PLS NO. 27605 IS ASSUMED TO BEAR N22°18'18"E, A DISTANCE OF 218.26 FEET.

BENCHMARKS

- BL33 BEING A BERNITSEN TOP SECURITY MONUMENT IN RANGE BOX 5' SOUTH OF SOUTH ROW FENCE OF HWY 24 UNDER CENTERLINE OF TRANSMISSION LINE. ELEVATION = 6455.17'
- CONTROL POINT 1, SET PK NAIL IN NE CORNER OF ELECTRIC TRANSFORMER PAD. ELEVATION = 6372.26'

SHEET INDEX

SHEET 1	TITLE SHEET
SHEET 2	SAN SEW PLAN & PROFILE (INCL UTILITY SERVICES)

EL PASO COUNTY FILE NO. SF-20-014

CLAREMONT BUSINESS PARK 2 FIL. NO. 1

SANITARY SEWER PLAN (INCL UTILITY SERVICES)

PROJECT NO. 44-037
DATE: 08-04-20
SCALE: HORIZONTAL: N/A
VERTICAL: N/A
DESIGNED BY: CLP
DRAWN BY: GW
CHECKED BY: WS
SHEET 1 OF 2
SS01

102 E. PINE PEAK AVE SUITE 300
COLORADO SPRINGS, CO 80903
PHONE 719.555.5485

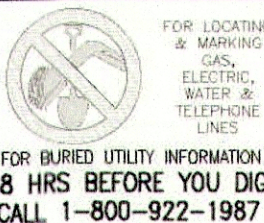
CIVIL CONSULTANTS, INC.

FOR AND ON BEHALF OF
M & S CIVIL
CONSULTANTS,
INC.

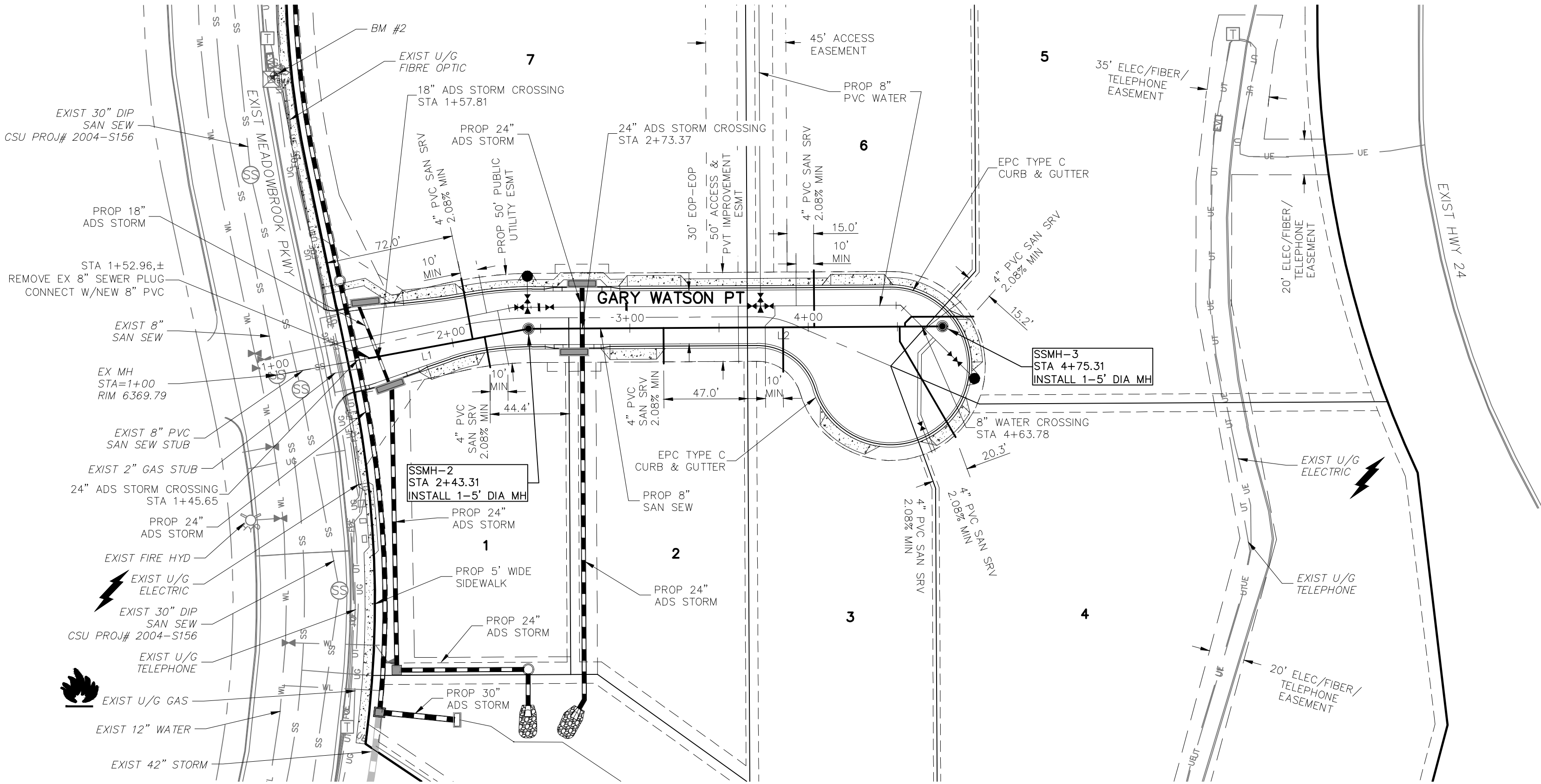
REVISIONS:	NO.	DATE	DESCRIPTION

THE ENGINEER PREPARING THESE PLANS WILL NOT BE RESPONSIBLE FOR UNAUTHORIZED CHANGES TO OR USES OF THESE PLANS. ALL CHANGES TO THE PLANS MUST BE IN WRITING AND MUST BE APPROVED BY THE PREPARER OF THESE PLANS.

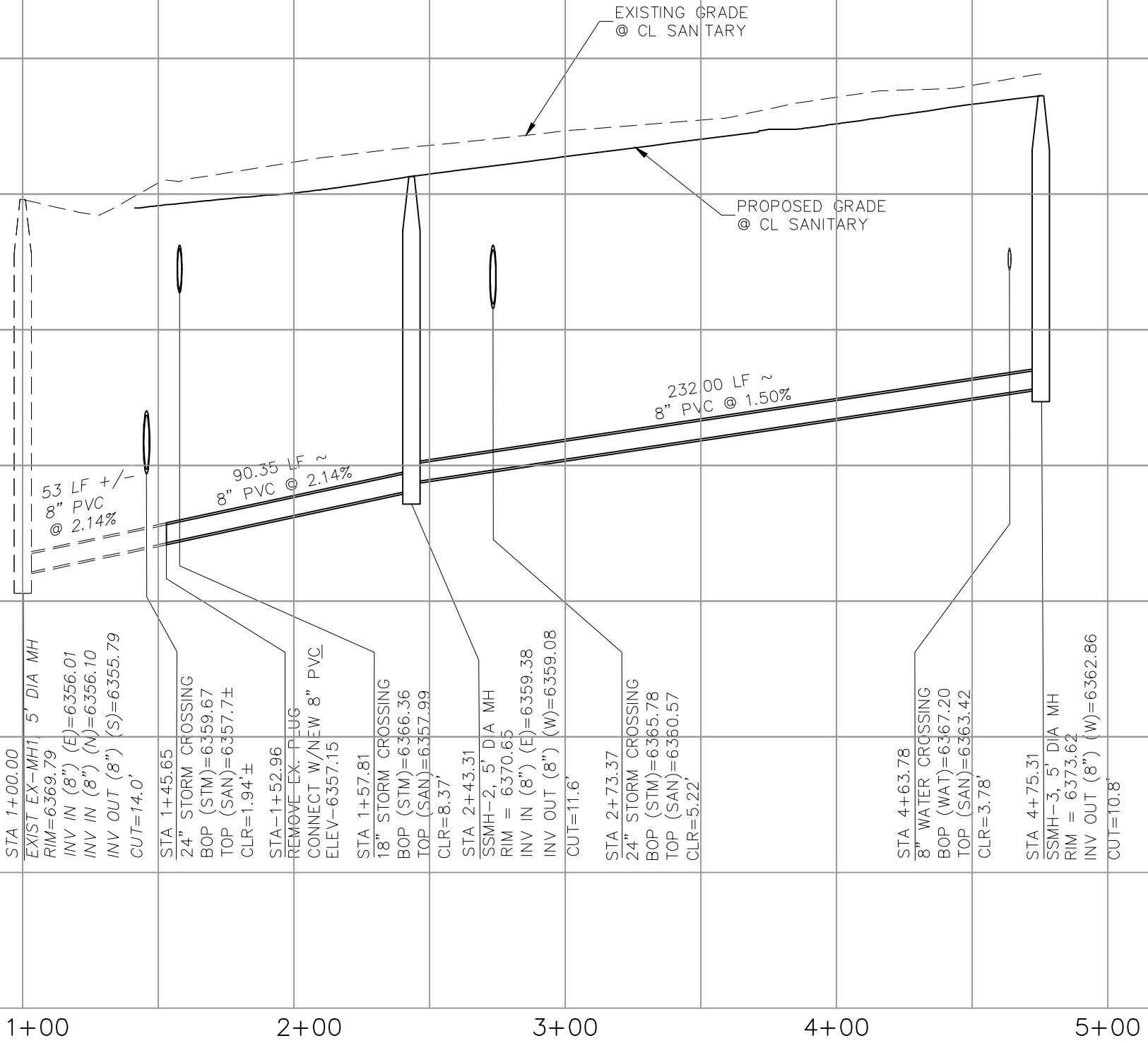
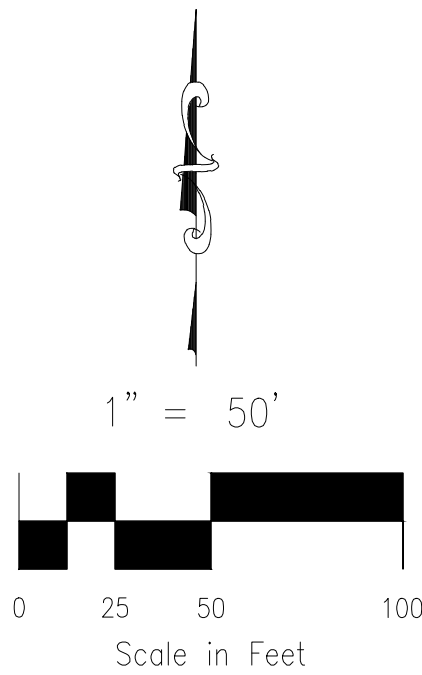
CAUTION

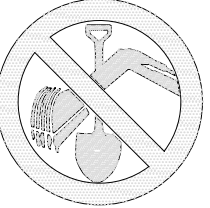


FOR BURYING UTILITY INFORMATION
48 HRS BEFORE YOU DIG
CALL 1-800-922-1987



SANITARY SEWER LINE TABLE		
LINE	LENGTH	DIRECTION
L1	90.35'	N79°30'16"E
L2	232.00'	N89°41'23"E





FOR LOCATING & MARKING
GAS,
ELECTRIC,
WATER &
TELEPHONE LINES

FOR BURIED UTILITY INFORMATION
48 HRS BEFORE YOU DIG
CALL 1-800-922-1987

CLAREMONT BUSINESS PARK 2 FIL. NO. 1

SANITARY SEWER PLAN (INCL UTILITY SERVICES)

PROJECT NO. 44-037

DESIGNED BY: GW

DRAWN BY: CLP

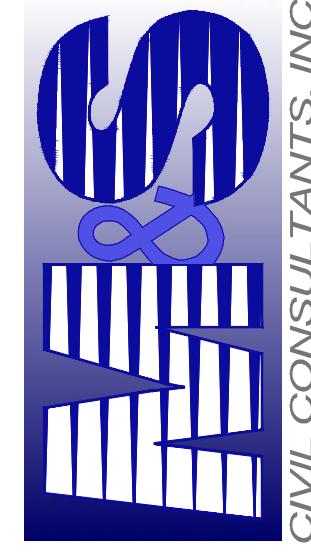
CHECKED BY: VAS

DATE: 08/4/20

SHEET 2 OF 2


SS02

102 E. Pikes Peak Ave. Suite 500
Colorado Springs, CO 80903
PHONE: 719.555.5485



CIVIL CONSULTANTS, INC.

FOR AND ON BEHALF OF
M&S CIVIL CONSULTANTS, INC.



REVISIONS:

NO.	DATE:	BY:	DESCRIPTION:	APPROV. BY:	DATE:

THE ENGINEER PREPARING THESE PLANS WILL NOT BE RESPONSIBLE, OR LIABLE FOR, UNAUTHORIZED CHANGES TO OR USES OF THESE PLANS. ALL CHANGES TO THE PLANS MUST BE IN WRITING AND MUST BE APPROVED BY THE PREPARER OF THESE PLANS.

CAUTION

- 

CLAREMONT BUSINESS PARK 2 FILING NO. 1

COUNTY OF EL PASO, STATE OF COLORADO

WATER SYSTEM PLAN

(INCLUDING UTILITY SERVICE PLAN)

A map of the area around the proposed site. The map shows several roads: Highway 24 running horizontally across the top, Highway 94 running vertically on the right, and Highway 100 running diagonally from the bottom left to the top right. Other roads include Powers, North, Carberry, Construction Ave, Main, Park, Omaha Blvd, Emily Rd, and Highway 24. Landmarks include the Sand Creek, Sand Creek, and Sand Creek. The proposed site is marked with a black triangle and labeled 'SITE'.

[illegible]

APPROVED BY: [Signature] DATE: 08/05/2020

SIGNED: [Signature] 08/26/2007
DATE

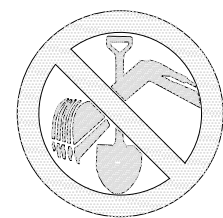
ADDRESS: 1411 WOOLSEY HEIGHTS COLORADO SPRINGS, CO 80915

FIRE DEPARTMENT SIGNATURE: N/A DATE: 11/1/2011

EL PASO COUNTY FILE NO. SF-20-014

[illegible]

PADMARK BUSINESS PARK
FILING NO. 1
RECEPTION NO 217714046



FOR LOCATING
& MARKING
GAS,
ELECTRIC,
WATER &
TELEPHONE
LINES

FOR BURIED UTILITY INFORMATION
48 HRS BEFORE YOU DIG
CALL 1-800-922-1987

CLAREMONT BUSINESS
PARK FIL. NO. 1C

FUTURE
COMMERCIAL
DEVELOPMENT

LOT 7

LOT 6

LOT 5

LOT 1

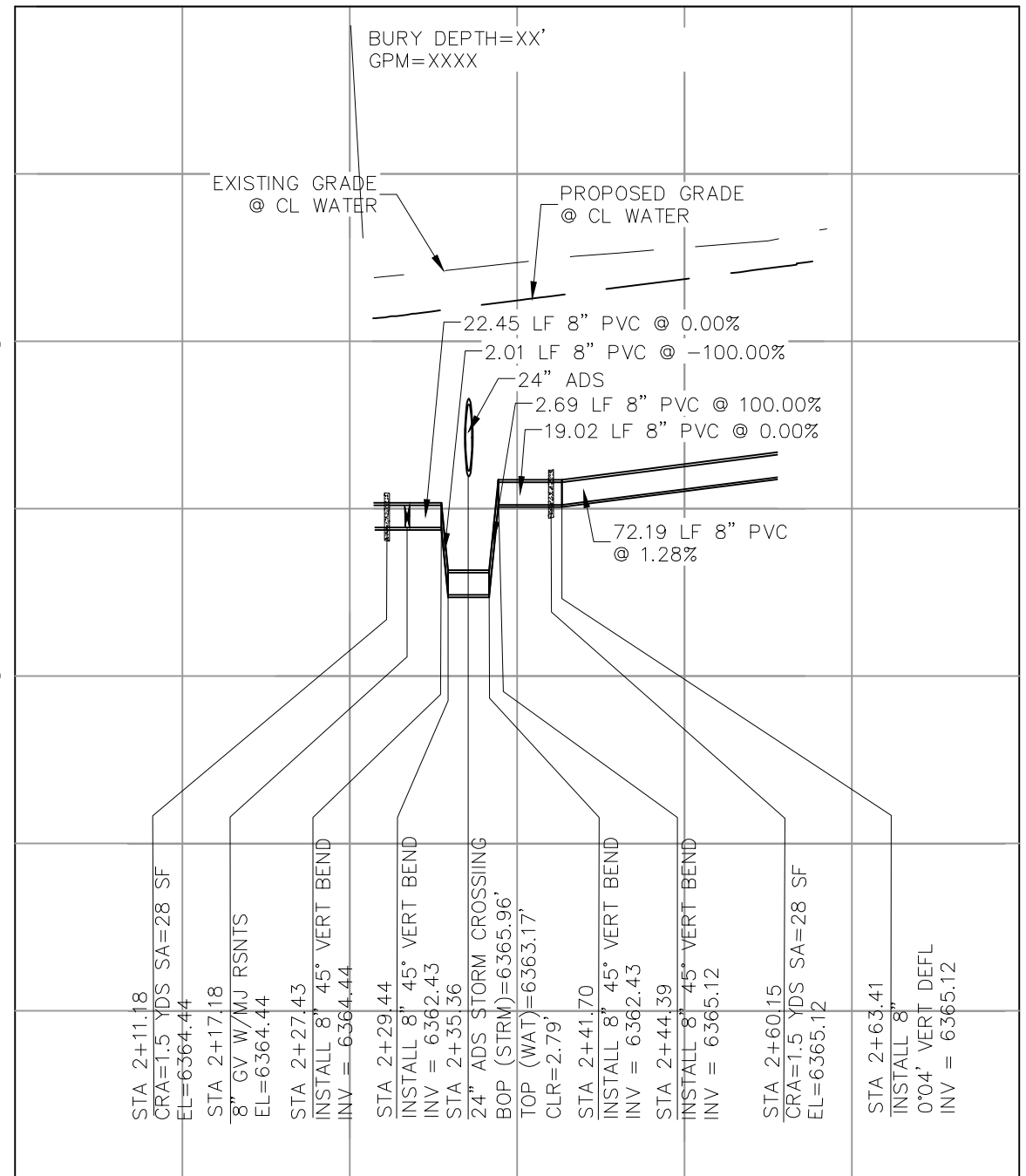
LOT 2

LOT 3

LOT 4

GARY WATSON PT

WO SAND
FILTER POND
TRACT A

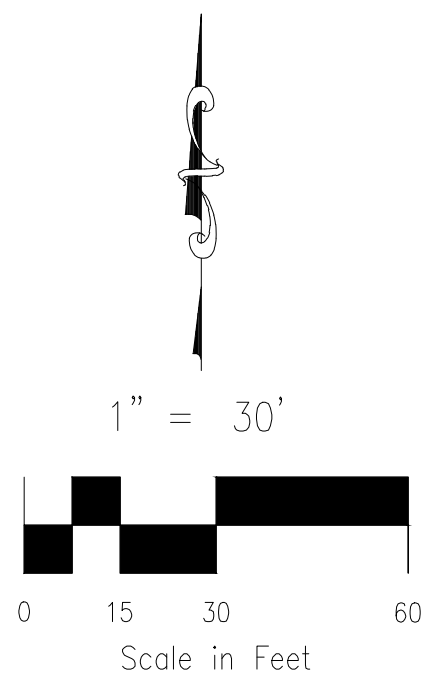


**PROPOSED 8" PVC WATER
LOWERING
STA 2+11.18 TO STA 2+60.15**

SCALE: 1"=50' HORZ
1"=5' VERT

NOTE: LOWERING PIPE LENGTHS NOT
INCLUDED IN LINE TABLE

WATER CL LINE TABLE		
LINE	LENGTH	DIRECTION
L1	96.97'	N78°26'12"E
L2	8.00'	N89°41'23"E
L3	40.48'	S45°18'37"E
L4	17.91'	S45°18'37"E
L6	130.63'	N89°41'23"E
L7	78.40'	N89°41'23"E
L8	209.79'	N0°18'37"W



VIRGIL A. SANCHEZ, COLORADO P.E. NO. 37160

FOR AND ON
BEHALF OF
WAS CIVIL
CONSULTANTS,
INC.

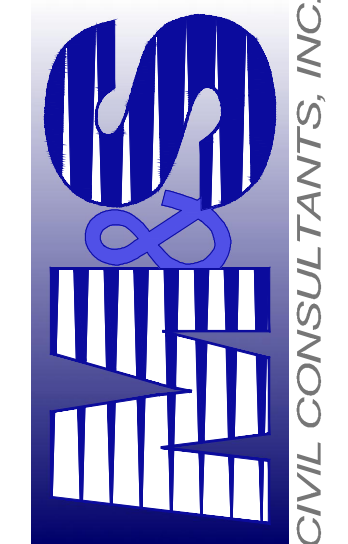


REVISIONS:
NO. DATE: BY: DESCRIPTION: APPROV. BY: DATE:

THE ENGINEER PREPARING THESE PLANS WILL NOT BE RESPONSIBLE, OR LIABLE FOR, UNAUTHORIZED CHANGES TO OR
USES OF THESE PLANS. ALL CHANGES TO THE PLANS MUST BE IN WRITING AND MUST BE APPROVED BY THE PREPARER
OF THESE PLANS.

CAUTION

102 E. Pikes Peak Ave., Suite 500
Colorado Springs, CO 80903
PHONE: 719.555.5485



CIVIL CONSULTANTS, INC.

CLAREMONT BUSINESS PARK 2 FIL NO. 1
WATER PLAN (INCL WATER SERVICE)

PROJECT NO. 44-037
SCALE: 1"=50' HORZ
1"=5' VERT
DESIGNED BY: GW
DRAWN BY: CLP
CHECKED BY: WAS
DATE: 08-4-20
SHEET 2 OF 2
WT02